

Antenna Report

Model: RF-BM-S02

Manufacturer: SHENZHEN RFSTAR TECHNOLOGY CO.,LTD

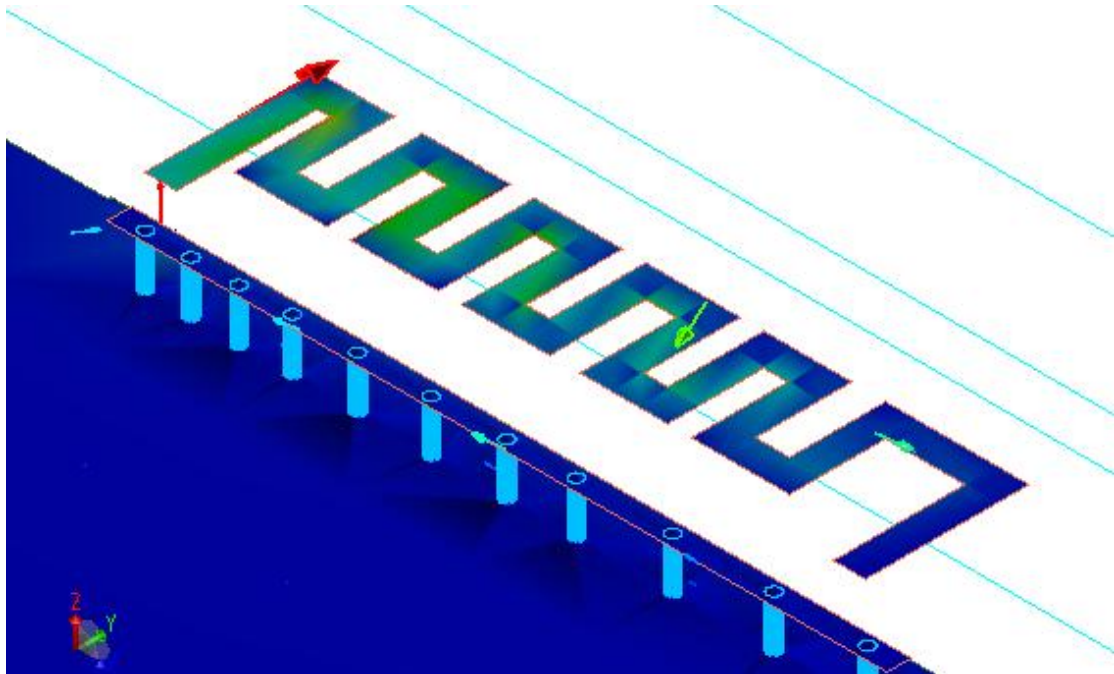
Test Lab: Shenzhen BALUN Technology Co.,Ltd.

APPLications

※Bluetooth Home RF

※ISM band 2.4GHz applications

1. Dimensions

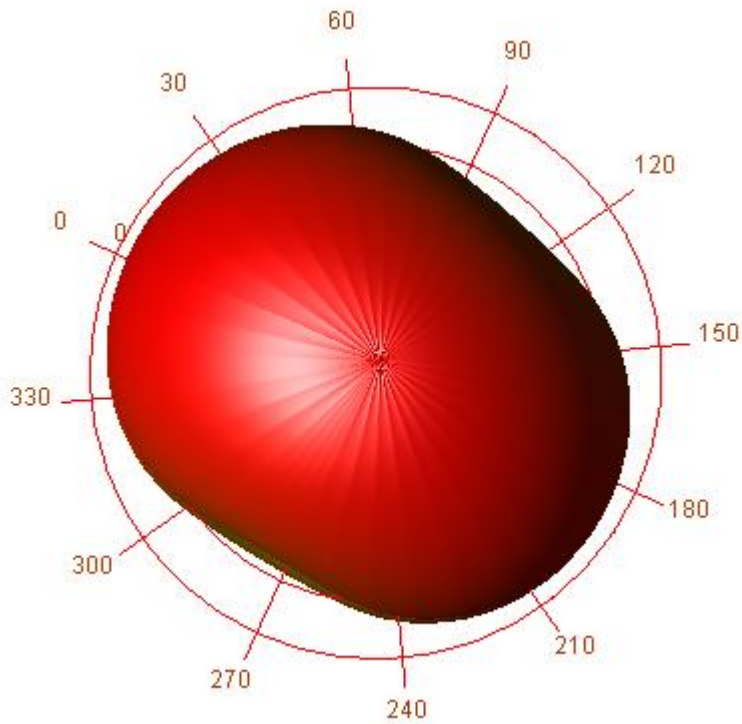
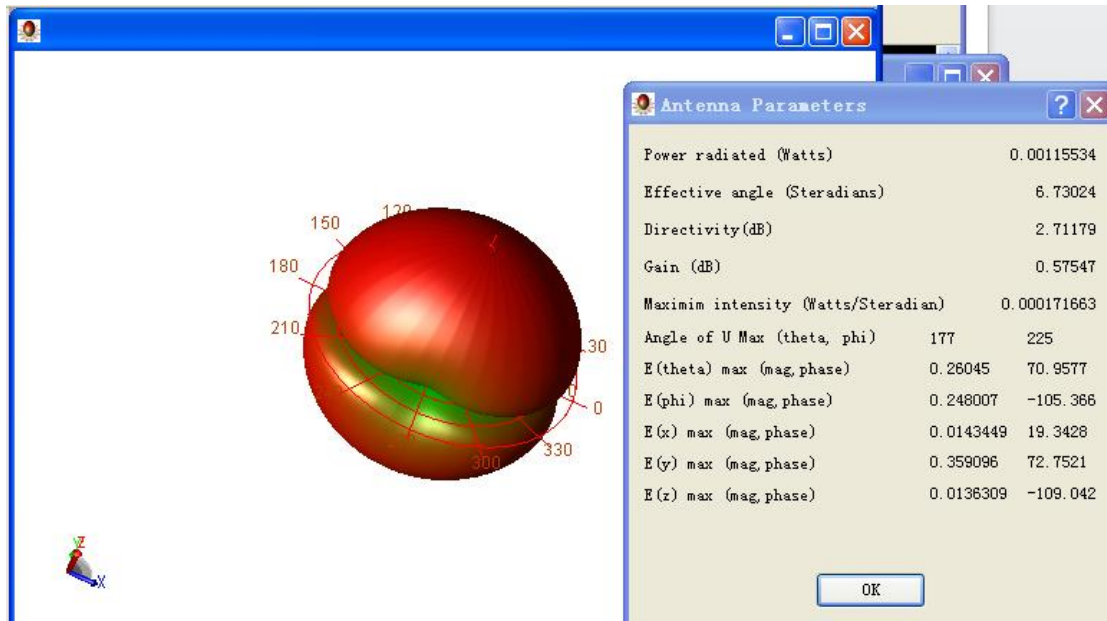


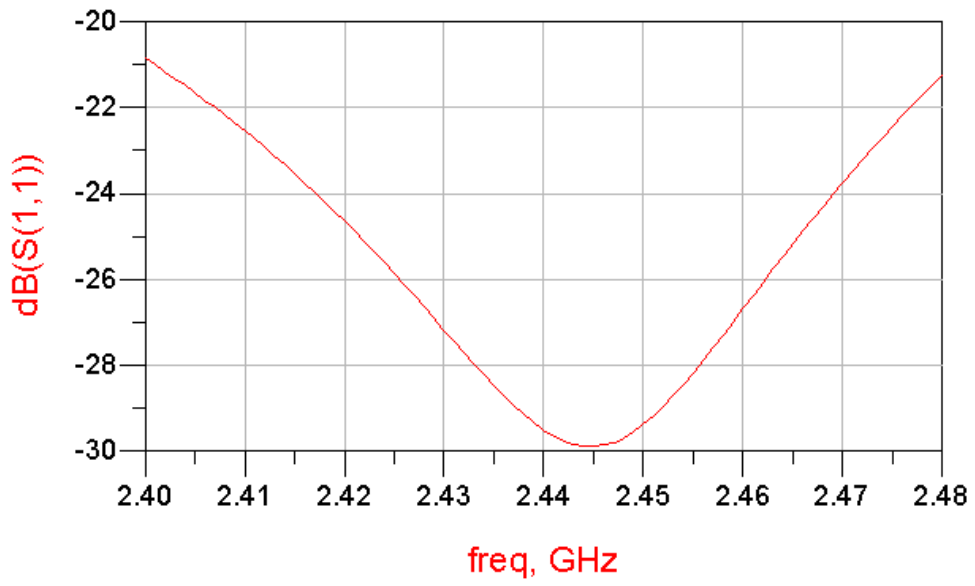
2. Specifications

number	Item	Specifications
1	Working Central Frequency	2.4G
2	Band Width	(2402-2480)MHz
3	Gain	1.15dBi
4	VSWR	≤ 2.0
5	Antenna type	PCB antenna
6	Azimuth Beam width	Omni - directional
7	Model	RF-BM-S02

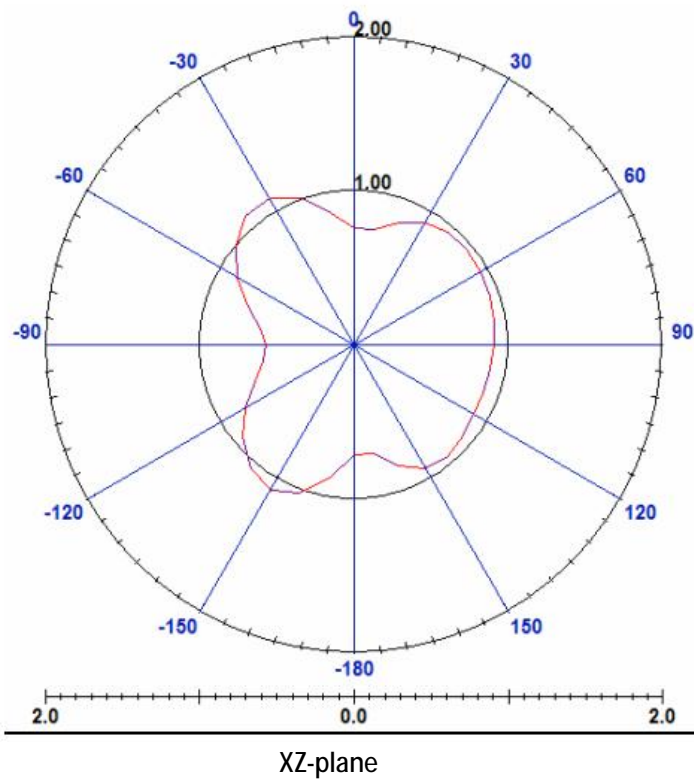
SHENZHEN RFSTAR TECHNOLOGY CO.,LTD

2.

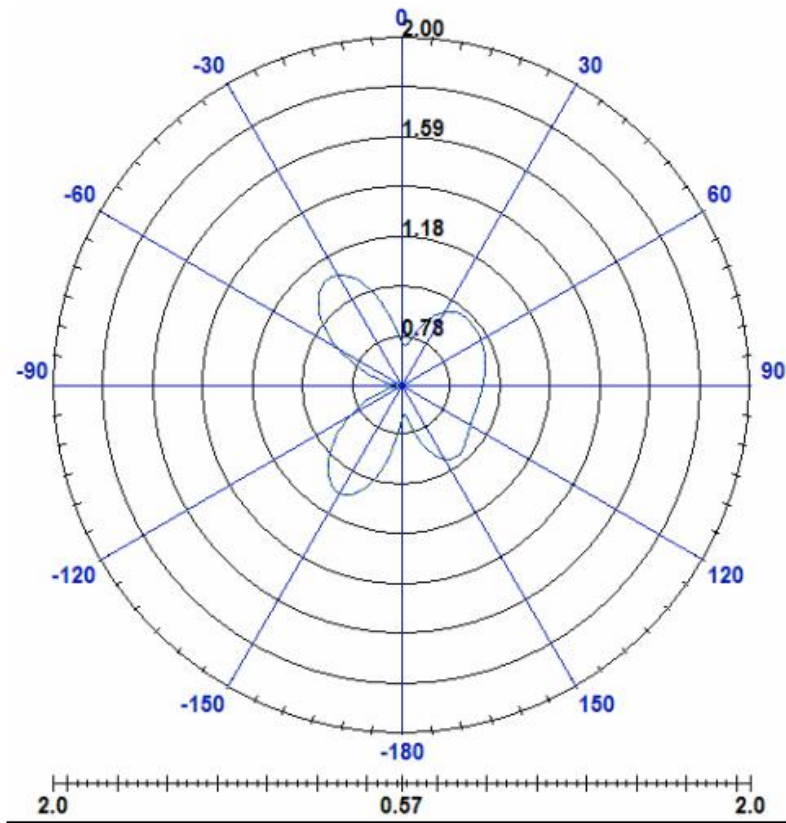




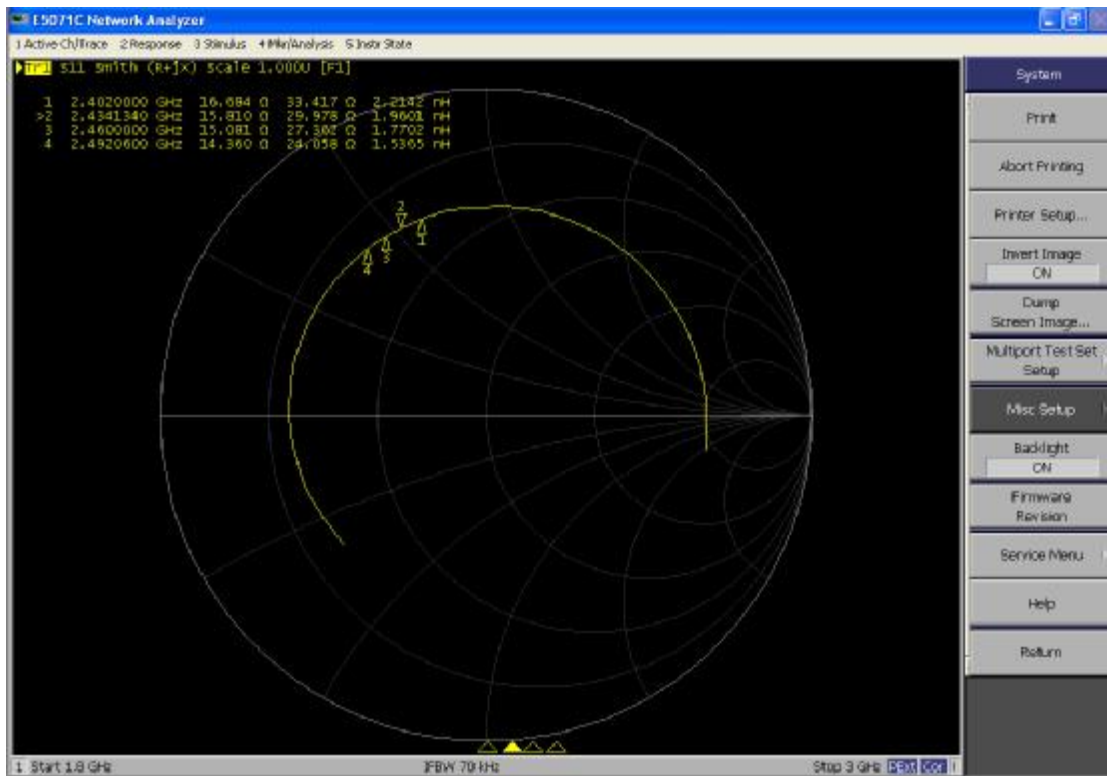
XZ-plane



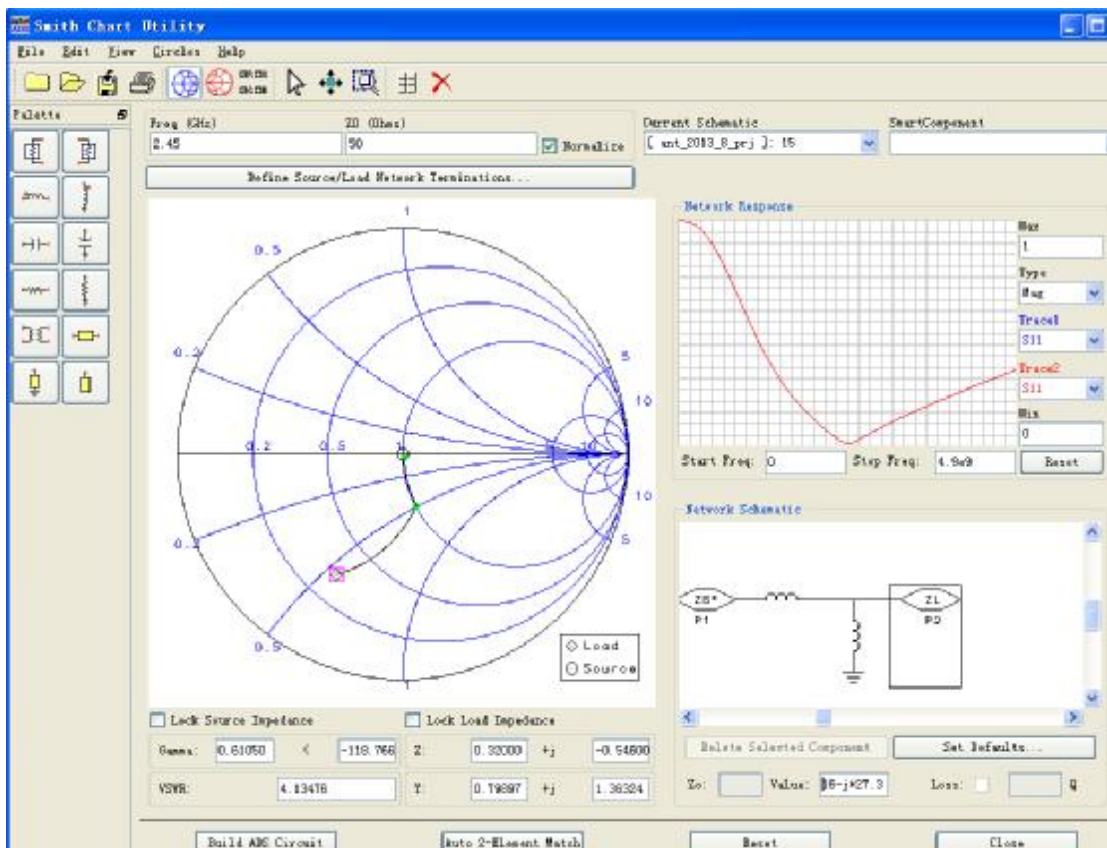
YZ-plane



YZ-plane



共轭匹配后



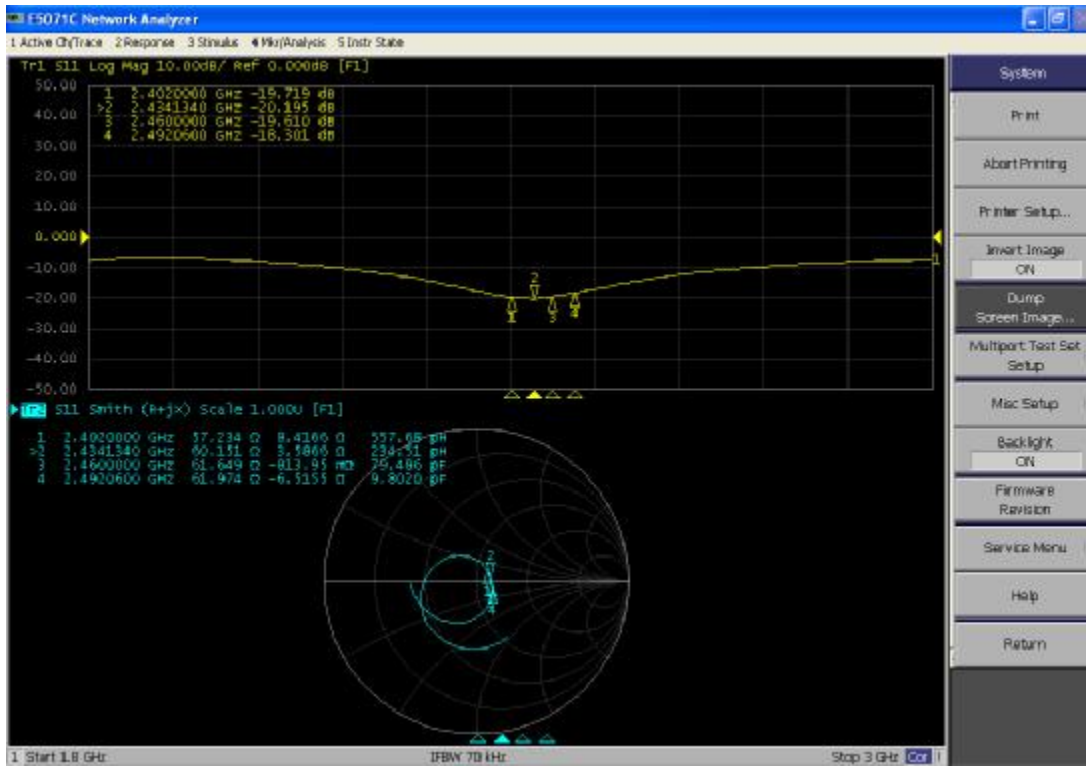
1、Return Loss

Mkr1:2402MHz
Mkr1:-19.7db

Mkr2:2434MHz
Mkr2:-20.1db

Mkr3:2460MHz
Mkr3:-19.6db

Mkr4:2492MHz
Mkr4:-18.3db



2、VSWR

Mkr1:2402MHz

Mkr2:2434MHz

Mkr3:2460MHz

Mkr4:2492MHz

Mkr1:1.22

Mkr2:1.24

Mkr3:1.28

Mkr4:1.33

