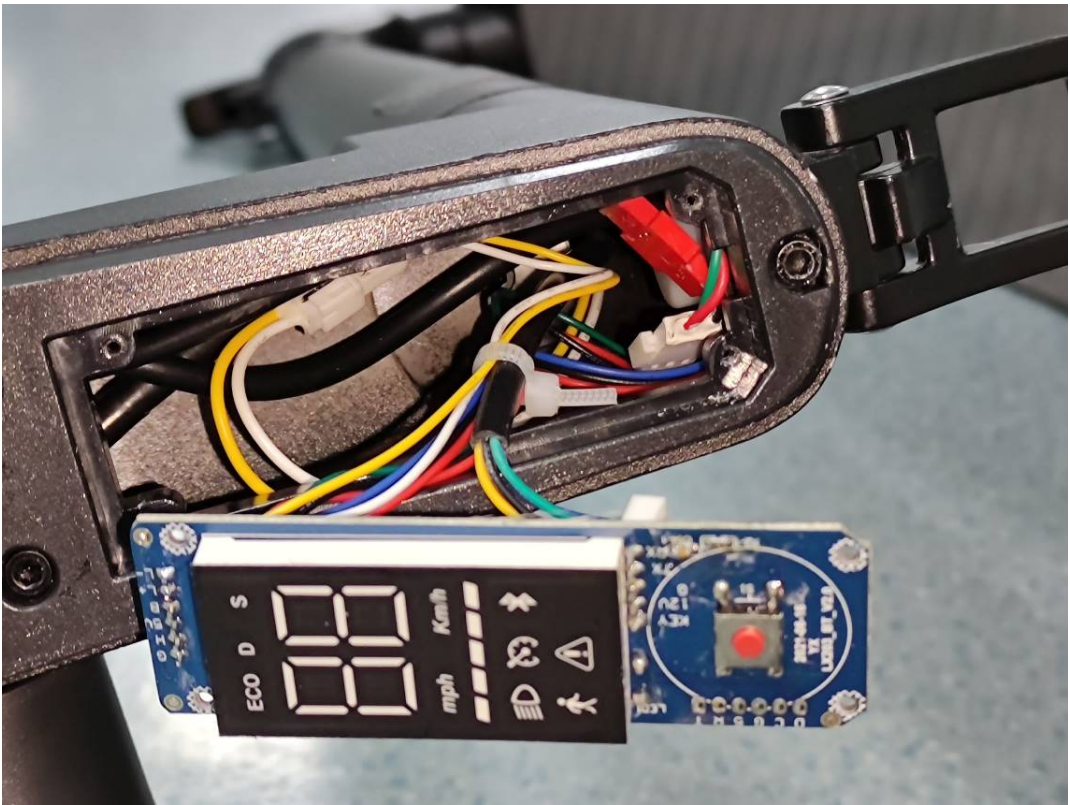
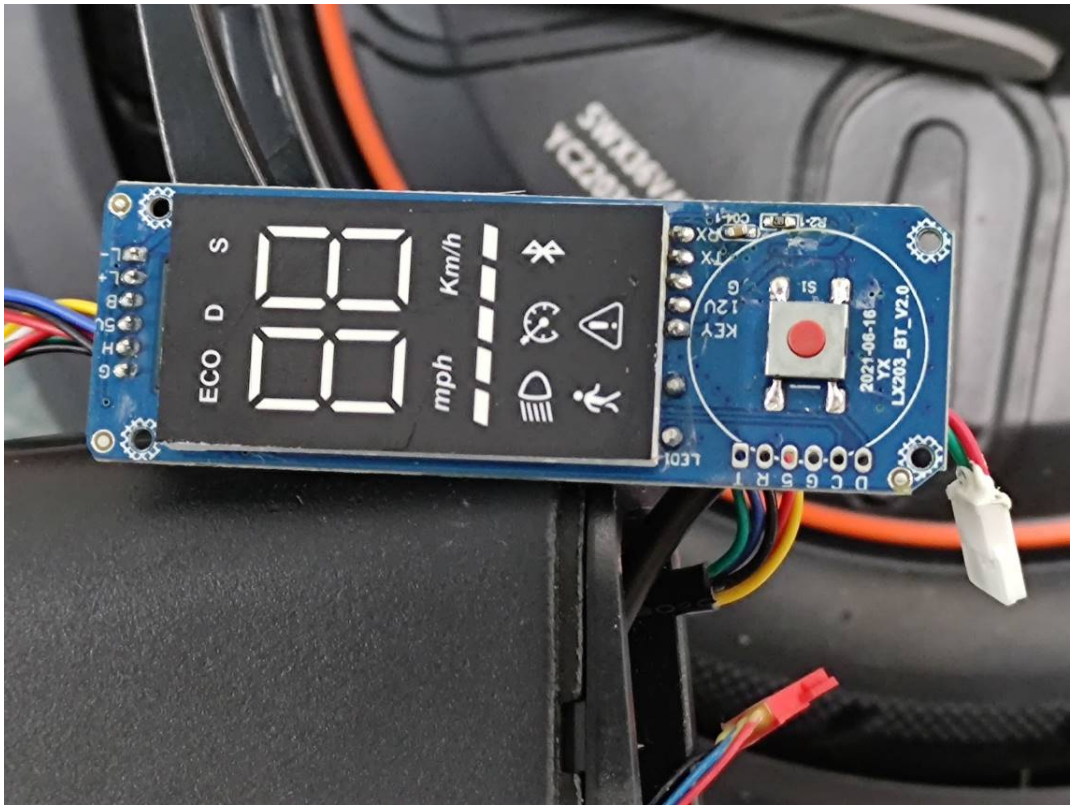
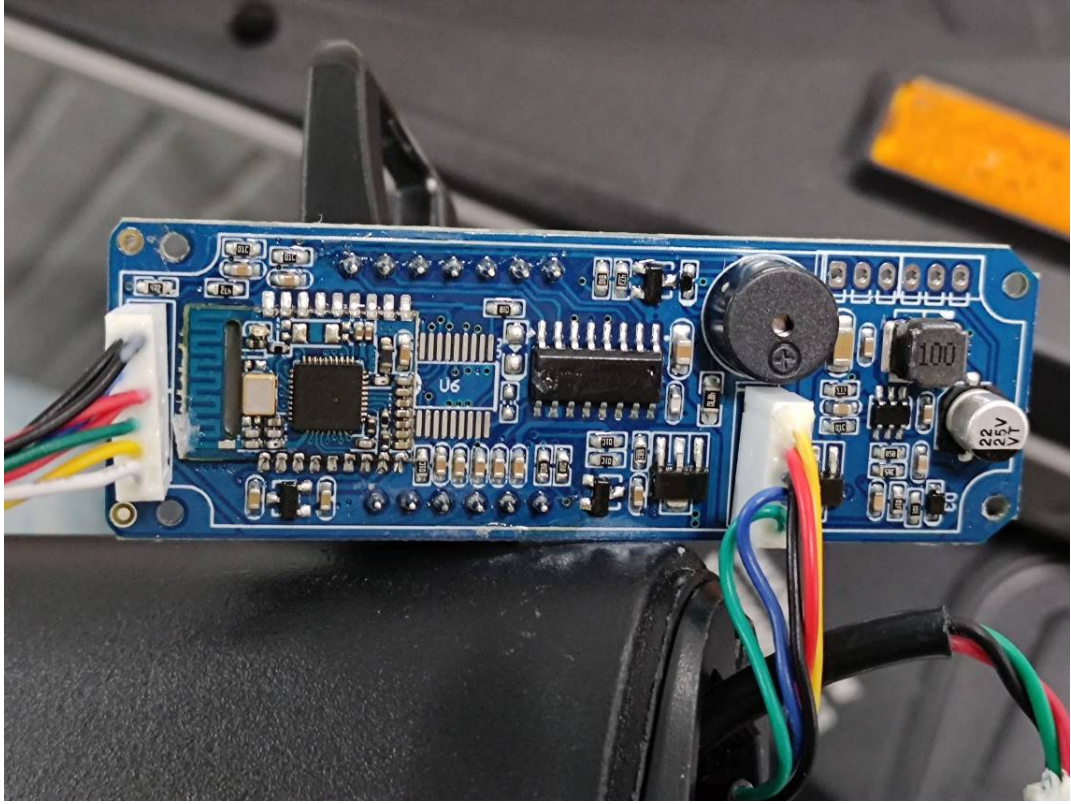
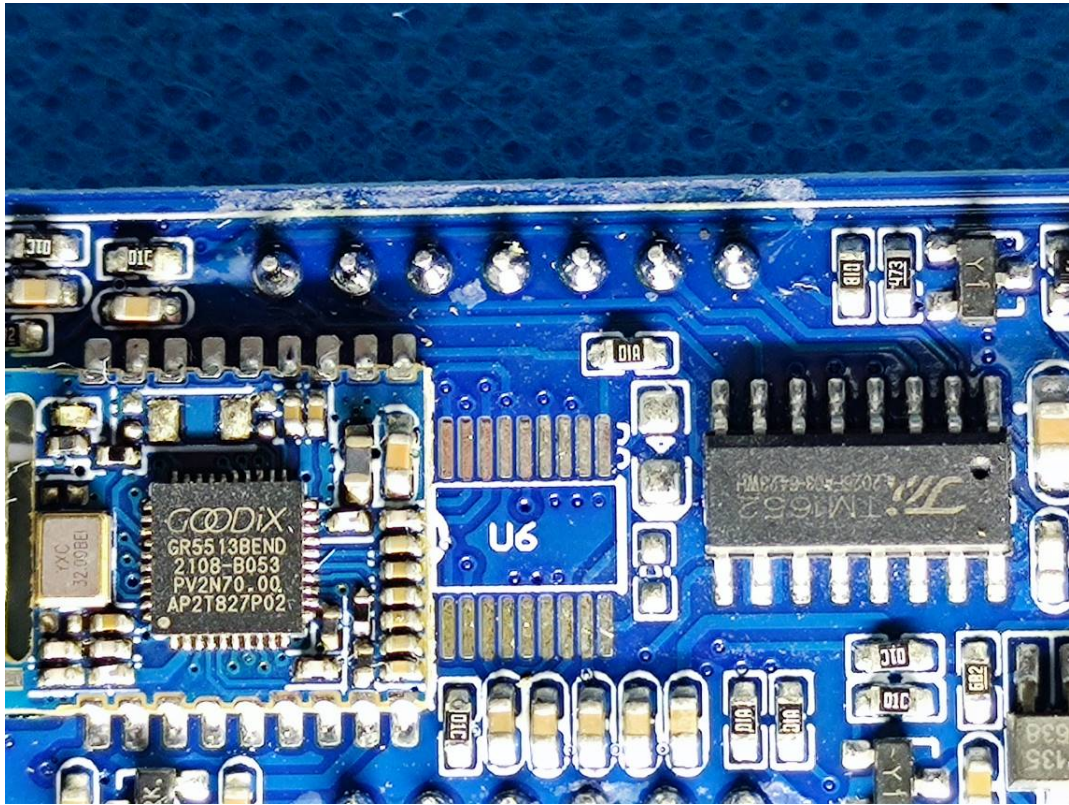


EXHIBIT C - EUT INTERNAL PHOTOGRAPHS

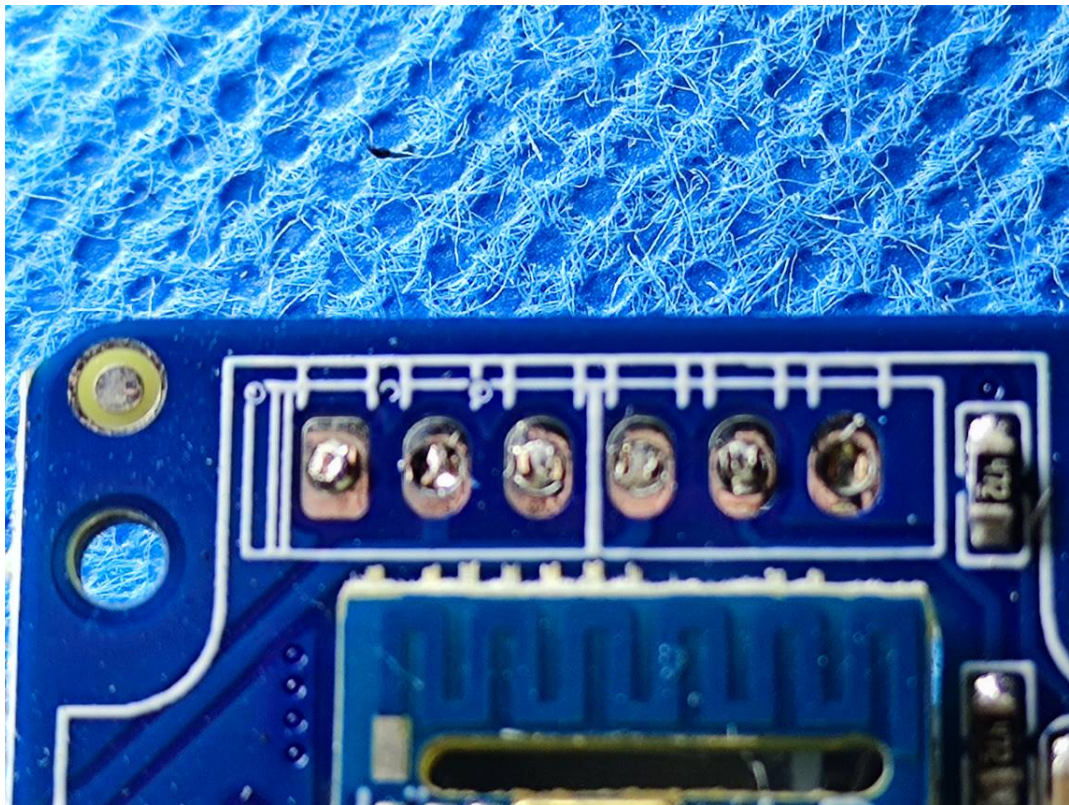




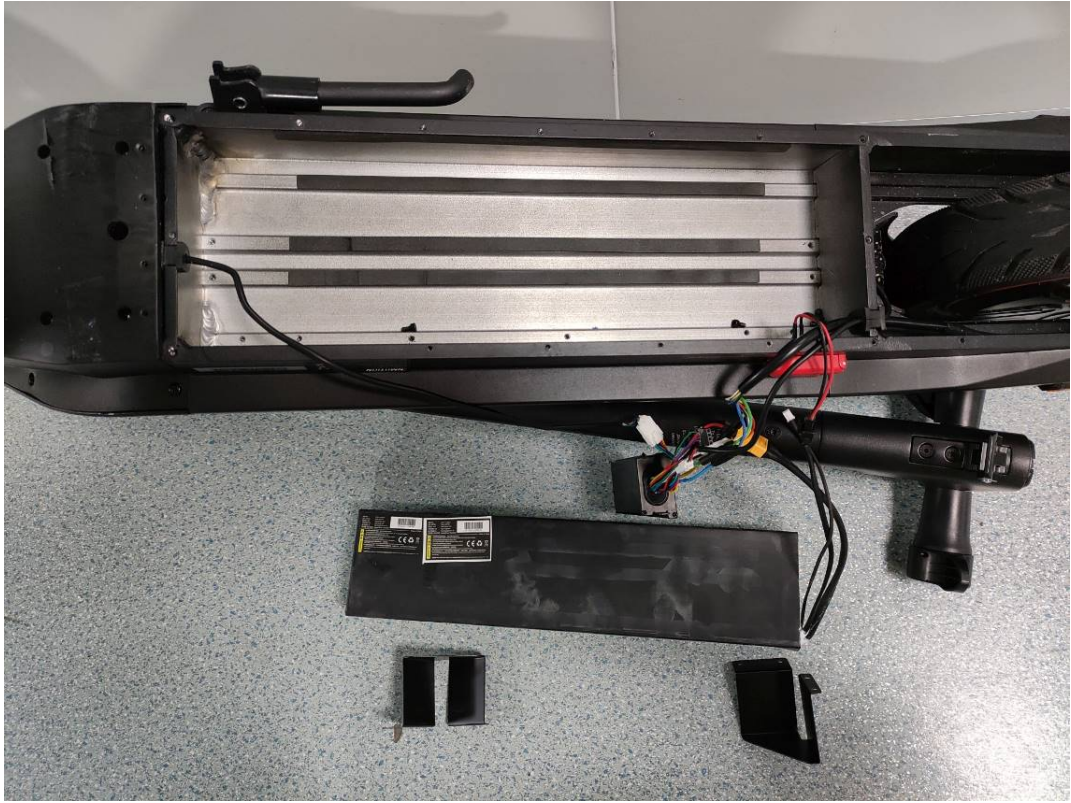




Antenna







锂离子电池
型号: LX20736V
额定电压: 36.5V
充电限制电压: 42V
最大充电电流: 3A
容量/能量: 12Ah/438Wh

Lithium-ion Battery
Model: LX20736V
Rated Voltage: 36.5V
Input Voltage: 42V
Max Charging Current: 3A
Capacity/Power: 12Ah/438Wh



W120L1C00037

Made in China



警告
WARNING

1. 在使用前或长期存储时, 请先仔细阅读说明书;
Please read the battery safety tips carefully before use or long period storage.
2. 务必使用原装专用充电器对电池进行充电;
Do charge the battery with the original charger adaptor.
3. 非充电状态请保持充电口盖关闭;
Please cover the charging connector when unplugged.
4. 安装及拔出电池时请轻拿轻放, 以防跌落;
Be careful when pull out or install the battery in case of accidental falling.
5. 严禁拆除电池外壳, 不得对电池输出端强制放电, 反接及短路; 否则可能发生不可预知的危险。
Do not attempt to open the shell of the battery or cause a short circuit in case of unknown risks and danger.



制造商/Manufacturer: 深圳市沃尔德新能源有限公司/Shenzhen World New Power Co., Ltd.