

EXHIBIT C - EUT INTERNAL PHOTOGRAPHS



Battery



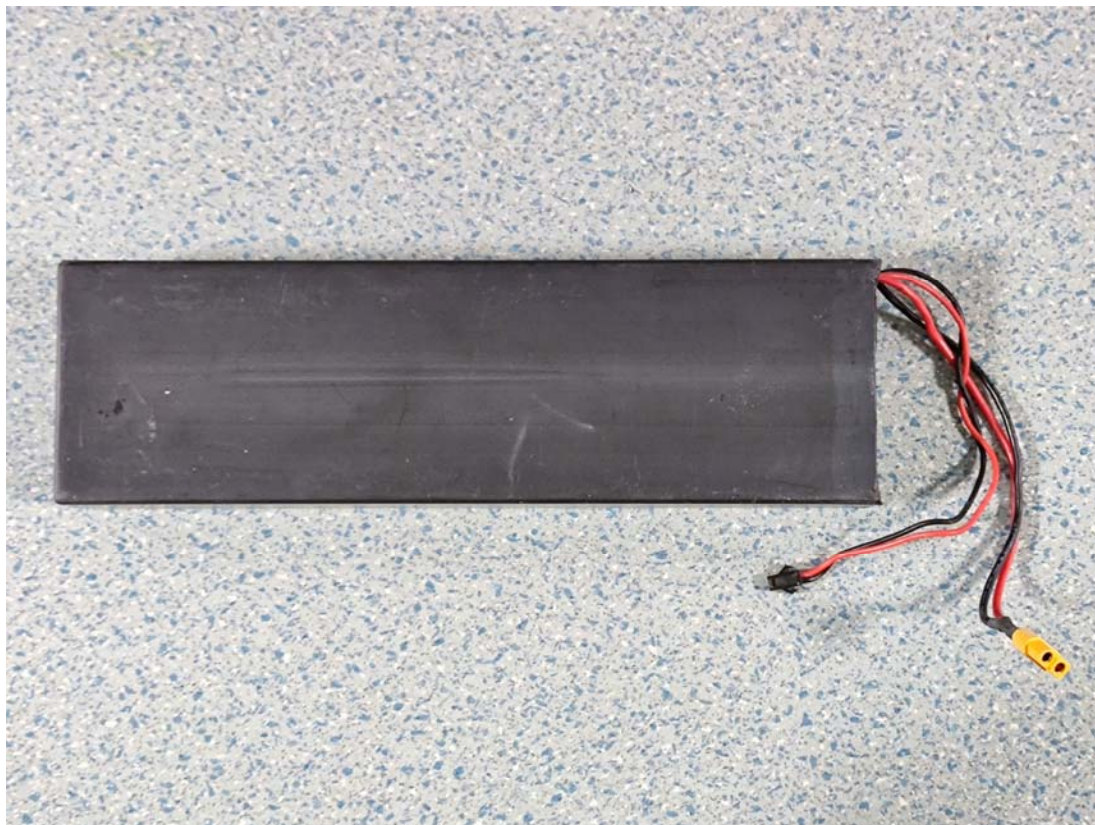
锂离子电池	Lithium ion battery	 E075E1900235
型号:LXC136V	Model:LXC136V	
额定电压:36V	Rated Voltage:36V	
最高充电电压:42V	Maximum Input voltage:42V	
最大充电电流:2.5A	Maximum charging current:2.5A	
额定容量:7.5Ah	Rated Capacity:7.5Ah	
能量:270Wh	Energy:270Wh	
委托方:深圳乐行天下科技有限公司 Client:INMOTION Technologies Co.,Ltd.		
制造商:惠州亿纬锂能股份有限公司 Manufacturer:EVE Energy Co.,Ltd.		

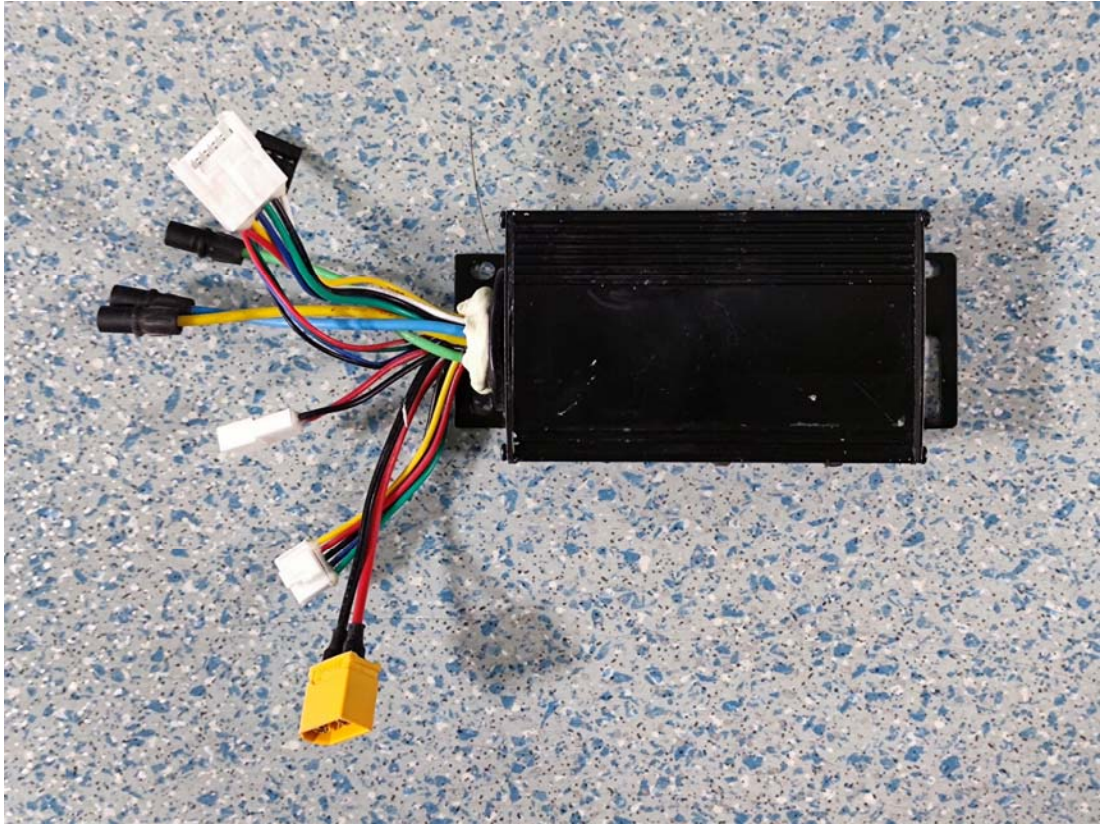
警告
WARNING

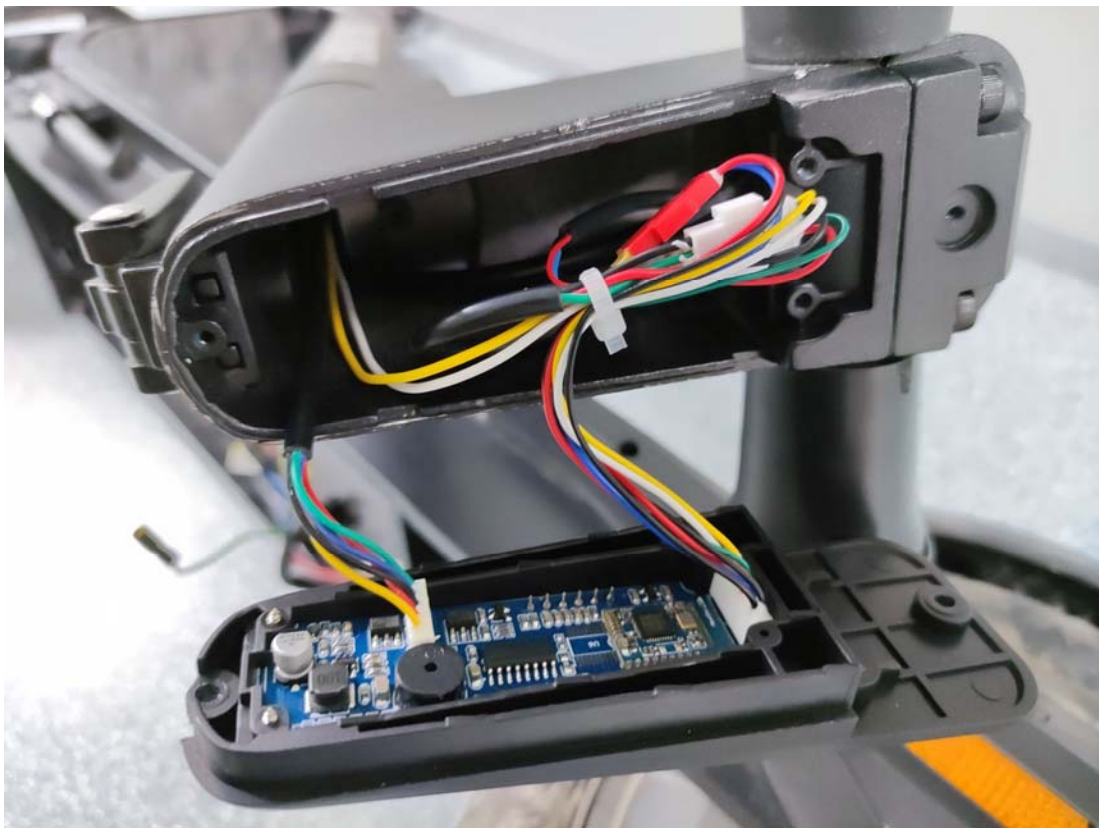
-  ●禁止拆卸电池组,拆卸电池组会发生内部短路,会引起起火、爆炸、有害气体或者其它问题
Do not disassemble the battery pack. Disassembling the battery pack may cause an internal short circuit, which may cause fire, explosion or other problems
- 只能使用原装充电器为电池组充电,充电电流不能超过2.5A,否则会损坏电池组,严重时会引起爆炸
Only the original charger can be used to charge the battery pack. The charging current should not exceed 2.5A, otherwise the battery pack will be damaged and fired will explode if serious
- 禁止用户自行更换电池,应由电池生产商或设备供应商完成
Users are not allowed to replace batteries themselves, which should be done by the battery manufacturers or equipment suppliers
- 长期不使用时,请将电池处于适宜的存储状态,半电荷存储
When the batteries are not be used for a long time, please store them safely so that they will stay in a half-charged state

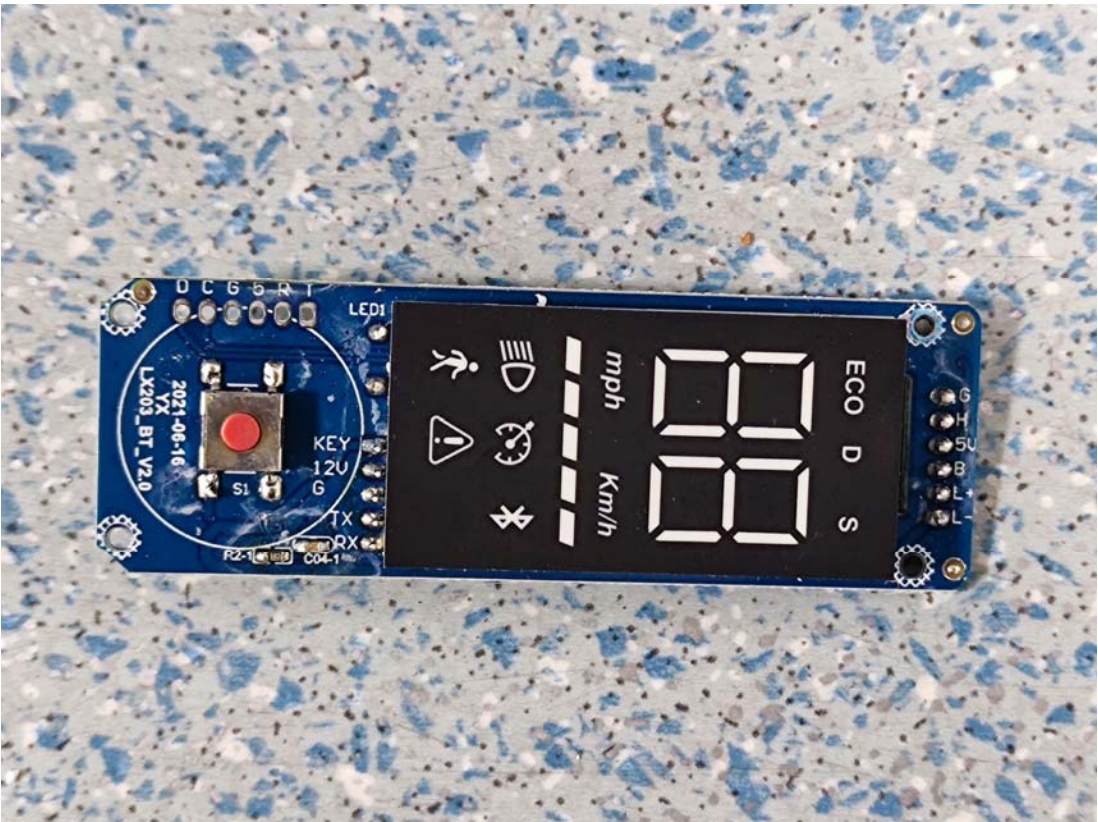


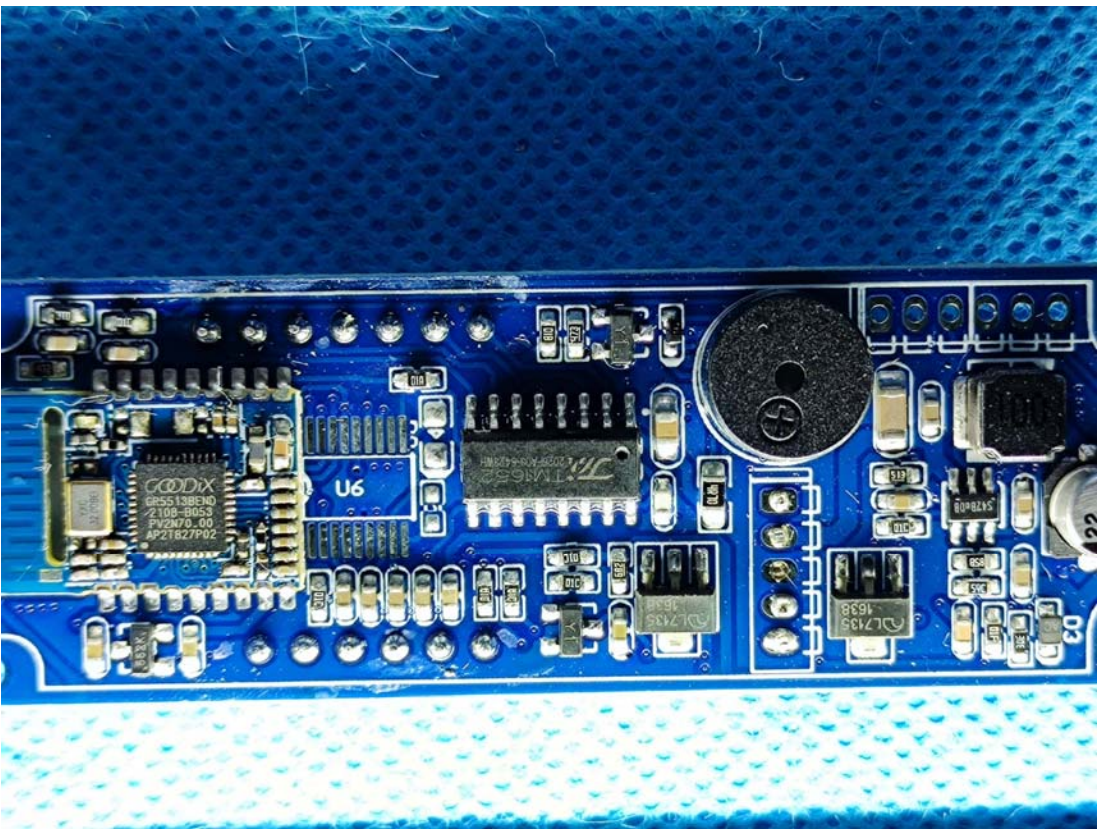
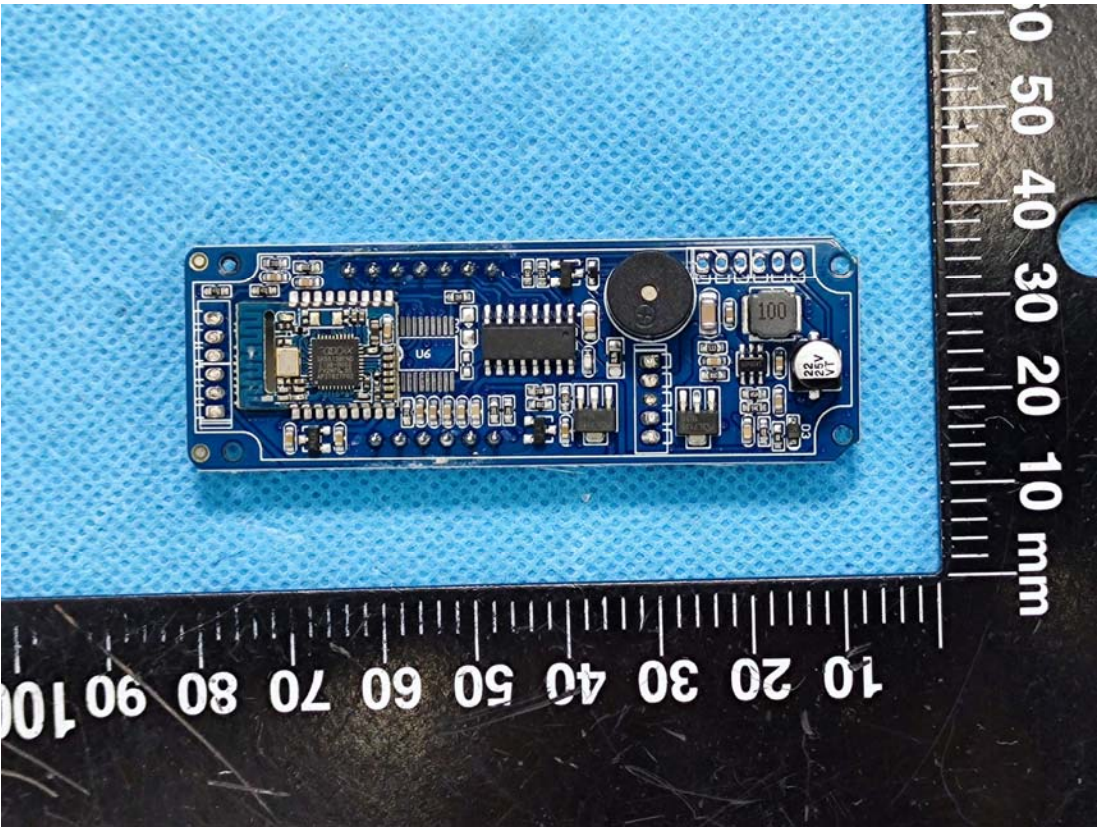










Antenna

