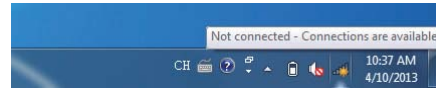
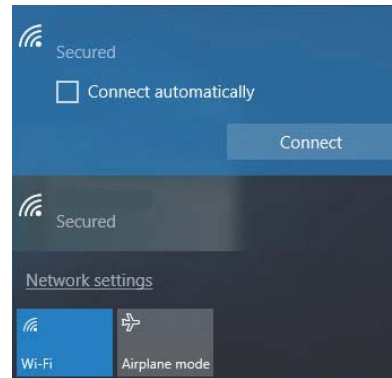


## 6. Wireless Network Connection

**Step 1:** Right-click on the **network icon** displayed in the system tray.



**Step 2:** Highlight the wireless network (SSID) to connect and click the **[Connect]** button.



**Step 3:** Enter the **encryption key** of the HWAP-AX880 if necessary.

If you have already finished the configuration of the HWAP-AX880, you can use your smart phone, tablet, laptop, or any other Wi-Fi device to connect with it wirelessly and start surfing the internet.

### FCC Warning Statement

Changes or modifications not expressly approved by the party responsible for compliance could void the user's authority to operate the equipment. This equipment has been tested and found to comply with the limits for a Class B digital device, pursuant to Part 15 of the FCC Rules. These limits are designed to provide reasonable protection against harmful interference in a residential installation. This equipment generates uses and can radiate radio frequency energy and, if not installed and used in accordance with the instructions, may cause harmful interference to radio communications. However, there is no guarantee that interference will not occur in a particular installation. If this equipment does cause harmful interference to radio or television reception, which can be determined by turning the equipment off and on, the user is encouraged to try to correct the interference by one or more of the following measures:

- - Reorient or relocate the receiving antenna.
- - Increase the separation between the equipment and receiver.
- - Connect the equipment into an outlet on a circuit different from that to which the receiver is connected.
- - Consult the dealer or an experienced radio/TV technician for help.

This device complies with part 15 of the FCC Rules. Operation is subject to the following two conditions: (1) This device may not cause harmful interference, and (2) this device must accept any interference received, including interference that may cause undesired operation.

### RF Exposure Statement

To maintain compliance with FCC's RF Exposure guidelines, This equipment should be installed and operated with minimum distance of 20cm the radiator your body. This device and its antenna(s) must not be co-located or operation in conjunction with any other antenna or transmitter.

### IC warning:

This device contains licence-exempt transmitter(s)/receiver(s)/ that comply with Innovation Science and Economic Development Canada's licence-exempt RSS(s). Operation is subject to the following two conditions:

- 1) this device may not cause interference and
  - 2) this device must accept any interference, including interference that may cause undesired operation of the device.
- Radiation Exposure: This equipment complies with Canada radiation exposure limits set forth for an uncontrolled environment; To maintain compliance with IC's RF Exposure guidelines, This equipment should be installed and operated with minimum distance of 20cm the radiator your body. This device and its antenna(s) must not be co-located or operation in conjunction with any other antenna or transmitter.

### Déclaration de l'ISED Canada :

Cet appareil contient des tasmittre (s) / récepteur (s) sans licence / conformes à l'innovationRSS exemptes de licence de Sciences et Développement économique Canada. L'opération est sous réserve des deux conditions suivantes :

- 1) cet appareil ne peut pas causer d'interférences et
- 2) cet dispositif doit accepter toute interférence, y compris peut provoquer le fonctionnement indésirable de l'appareil.

Exposition aux rayonnements : Cet équipement est conforme aux radiations du Canada limites d'exposition pour un environnement incontrôlé noncé d'exposition RF Pour maintenir le respect des guides d'exposition RF d'IC, cquipment doit être installé et actionné avec une distance minimale de 20cm le radiateur de votre corps.

Cet appareil et

ses antennes ne doivent pas être co-localisé ou en opération en conjonction avec toute autre antenne ou émetteur.

This radio transmitter (24695-HWAPAX880) has been approved by Innovation, Science and Economic Development Canada to operate with the antenna types listed below with the maximum permissible gain indicated. Antenna types not included in this list that have a gain greater than the maximum gain indicated for any type listed are strictly prohibited for use with this device.

The device for the band 5150-5250 MHz is only for indoor usage to reduce the potential for harmful interference to co-channel mobile satellite systems.

### Detachable antenna:

- 6.54 dBi at 2.4 GHz, 50Ω, External Antenna
- 8.16 dBi at 5 GHz, 50Ω, External Antenna
- 7.71 dBi at 5 GHz, 50Ω, External Antenna

The antenna of the device's WiFi is detachable.

## 1. Package Contents

Thank you for choosing Outdoor Wireless AP. Before installing, please verify the contents inside the package box. The device mentioned herein is the brief name of the "Outdoor Wireless AP".

HWAP-AX880	Quick Guide	L-type Bracket x 1
		
Screw Set x 1	U-bolt Kit x 2	RJ45 Waterproof Kit x 1
		



If there is any item missing or damaged, please contact the seller immediately.

- 1 -

## 2. Physical Introduction

### Hardware Description



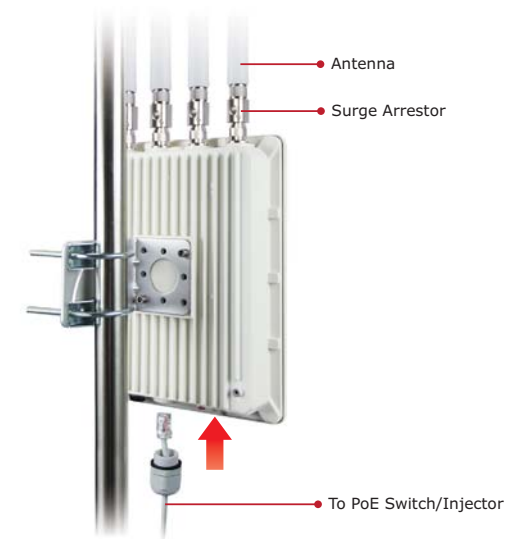
- 3 -

**Step 2:** (1) Attach the surge arrestors to each antenna connector.

(2) Attach the antenna equipped with N-type (M) connector to each surge arrestor. Otherwise, connect the antenna through the N-male (male pin) to N-male (male pin) cable.

(3) Plug the RJ45 Ethernet cable into the PoE port of the AP through the waterproof kit, and plug the other side of the RJ45 cable into the PoE port of the PoE switch to finish the installation.

\* Please remember to finish grounding by consulting the local electrical experts.



- 5 -

## 5. Entering into the Web Management

Default IP Address: **192.168.188.253**  
 Default Username and Password: **admin**  
 Default 2.4GHz SSID: **xxx\_2.4G**  
 Default 5GHz SSID: **xx\_5G**

**Step 1:** The Web management allows you to access and manage the wireless AP easily. Launch the Web browser and enter the default IP address <http://192.168.188.253>.



**Step 2:** When the login window pops up, please enter username and password. The default username and password are "admin". Then click the "Sign in" button to continue.



- 7 -

### IMPORTANT SAFETY PRECAUTIONS:

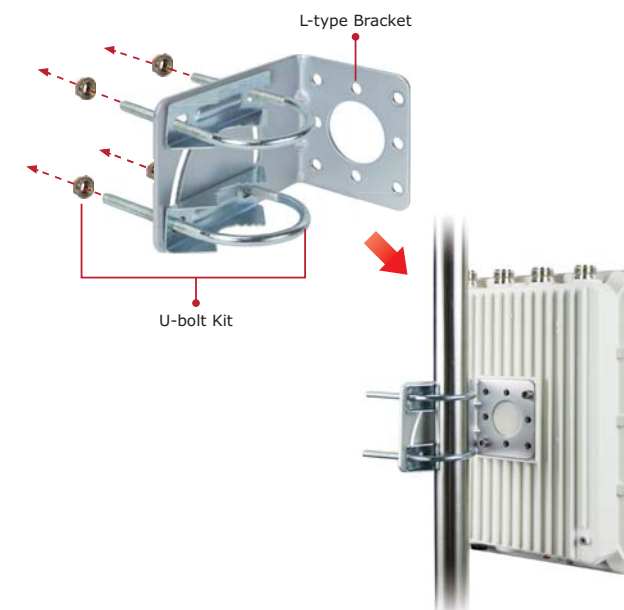
- LIVES MAY BE AT RISK!** Please be aware of the electrical wires around. Carefully read the section "OUTDOOR INSTALLATION WARNING" in the manual before installation.
- Users **MUST complete grounding wired** with the device; otherwise, a sudden lightning could cause fatal damage to the device. **EMD (Lightning) DAMAGE IS NOT COVERED UNDER WARRANTY.**
- Users **MUST** power off the device first before connecting the antenna to it; otherwise, damage might be caused to the device itself.
- The Antenna and Surge Arrestor are required for each antenna connector, and must be purchased separately.



- 2 -

## 3. Hardware Installation

- Step 1:** (1) Install the backplane to the back of the AP.
- (2) Attach the L-type bracket to the backplane and fasten it.
- (3) Place the AP to the pole and fasten it with the U-bolt kit.
- \* The AP can be mounted on the pole with a diameter of up to 2.5".

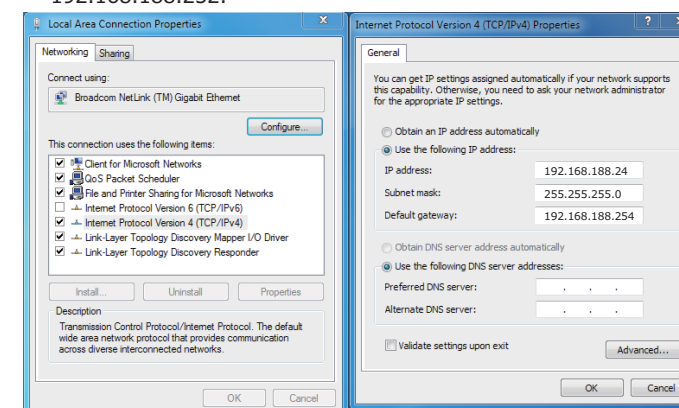


- 4 -

## 4. Wired Network Configuration (Windows 7 and Windows 10)

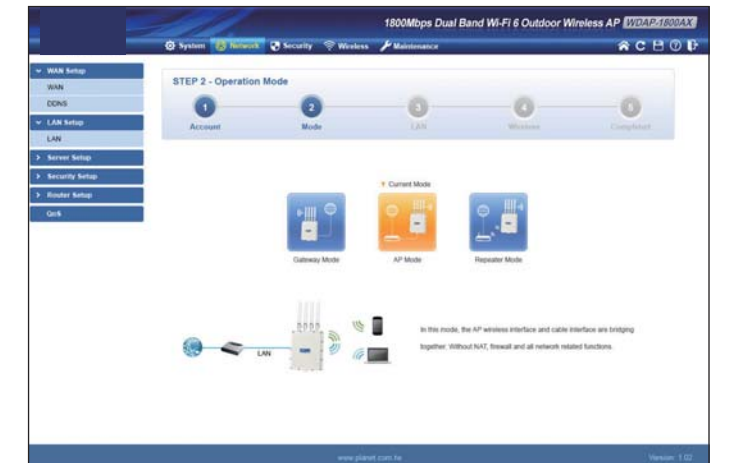
A computer with wired Ethernet connection is required for the first-time configuration of the wireless AP.

- Click the "Start" button located at the lower-left corner of your computer.
- Click "Control Panel".
- Double-click the "Network and Sharing Center" icon.
- Click "Change adapter settings".
- Double-click "Local Area Connection".
- Select "Internet Protocol Version 4 (TCP/IPv4)" and click "Properties".
- Select "Use the following IP address" and then click the "OK" button twice to save the configuration. For example, the default IP address of the HWAP-AX880 is 192.168.188.253 and the router is 192.168.188.254. You may choose from 192.168.188.1 to 192.168.188.252.



- 6 -

**Step 3:** Please follow the wizard to do the first-time setup and select the mode preferred.



- 8 -