



Quick Installation Guide

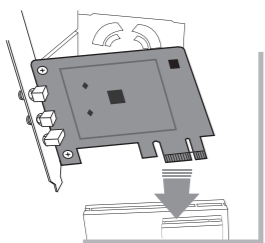
AC1200 Wireless Dual Band PCI Express Adapter

Model No.: H50319

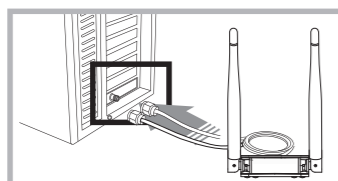
Copyrights 2016 by HIRO All rights reserved. Website: <http://www.hiroinc.com>
Information in this document is subject to change without prior notice.

2. WLAN Adapter Installation

1 Insert HIRO 11ac Dual Band Wireless Adapter into PCIe slot.



2 Connect antennas



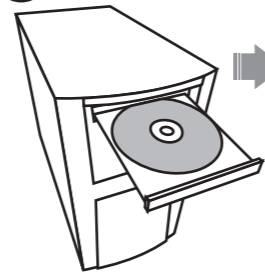
For more information, please go to www.hiroinc.com

1. LAN Adapter Driver Installation

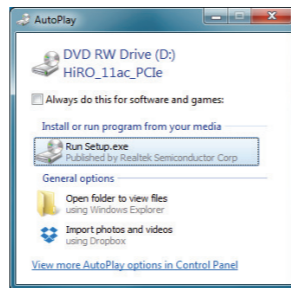


Note
The current driver supports Windows 10 8.1 8 and 7
Windows 10 is plug and play, no driver installation needed, just plug it in to your computer and the driver will be automatically installed.

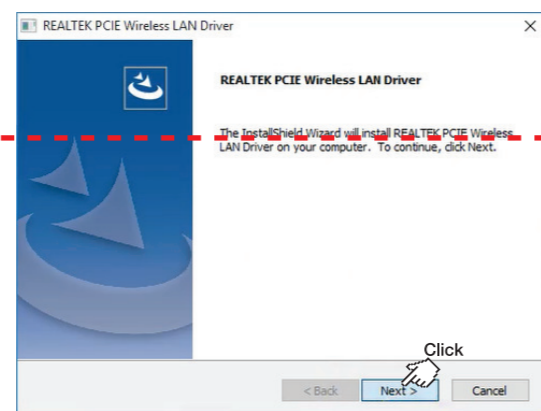
1 Put into the CD



2 Run Setup.exe



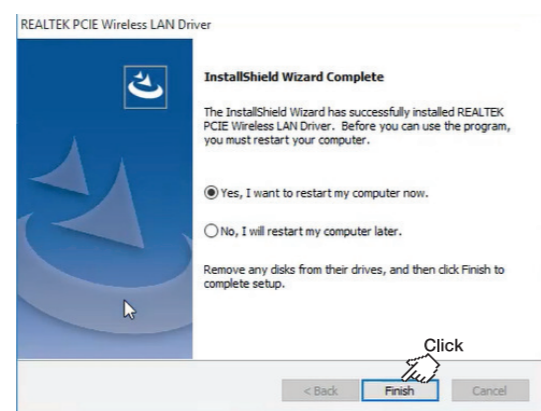
3 Click Next



4 Please wait for a few seconds



4 Choose Yes, then click Finish and waiting for your computer restarted.



3. Connect to Wireless Router

Method 1:

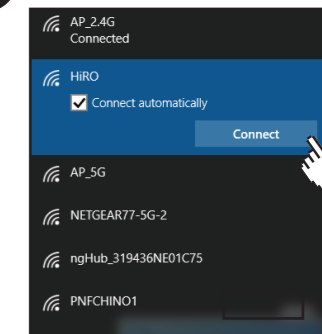
1 Click the icon in the bottom right.



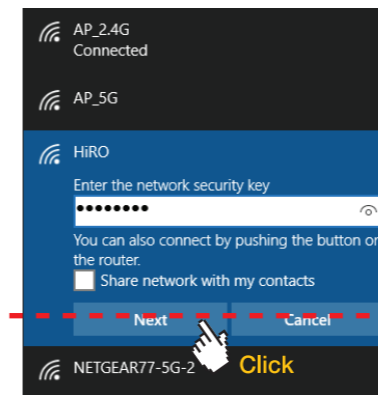
2 Choose SSID to connect.



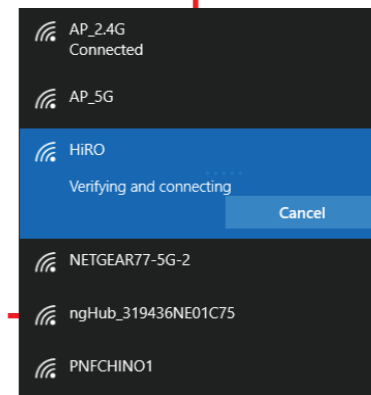
3 Click **Connect**



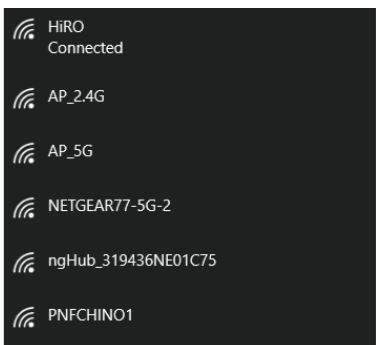
4 Here required to enter the correct password, and then click **Next**.



5 Wait for a few seconds.

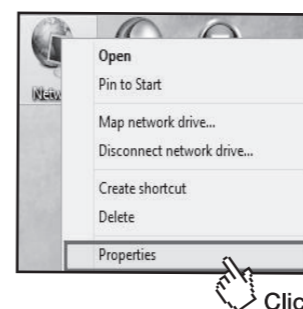


6 Now, you can see the Internet connected successfully.

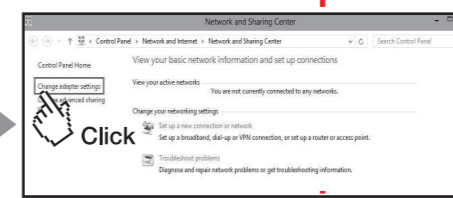


Method 2:

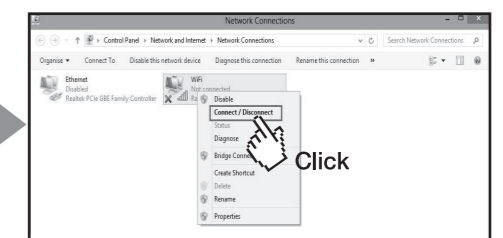
1 Right-click **Network**, choose **Properties**.



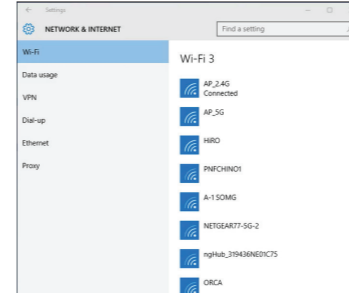
2 Click **Change adapter setting**.



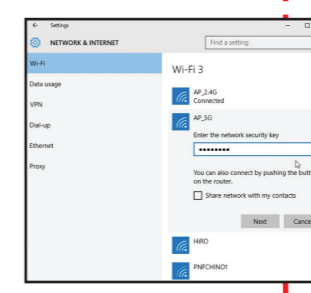
3 Right-click **WiFi**, choose **Connect / Disconnect**.



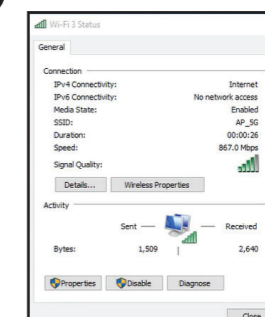
4 Choose SSID to connect.



5 Enter Password



6 Connected



WiFi Status
General
Connection: Internet
3rd Party Connectivity: No network access
Media State: Enabled
SSID: AP_5G
Duration: 00:20:36
Speed: 867.6 Mbps
Signal Quality:

WiFi Warning
Any Changes or modifications not expressly approved by the party responsible for compliance could void the user's authority to operate the equipment.
This device complies with part 15 of the FCC Rules. Operation is subject to the following two conditions: (1) This device may not cause harmful interference, and (2) this device must accept any interference received, including interference that may cause undesired operation.
FCC Radiation Exposure Statement:
This equipment complies with FCC radiation exposure limits set forth for an uncontrolled environment. The equipment should be installed and operated with minimum distance 20cm between the radiator and your body.
This transmitter must not be co-located or operating in conjunction with any other antenna or transmitter.
Note: This equipment has been tested and found to comply with the limits for a Class B digital device, pursuant to part 15 of the FCC Rules. These limits are designed to provide reasonable protection against harmful interference in a residential installation. This equipment generates uses and can radiate radio frequency energy and, if not installed and used in accordance with the instructions, may cause harmful interference to radio communications. However, there is no guarantee that interference will not occur in a particular installation. If this equipment does cause harmful interference to radio or television reception, which can be determined by turning the equipment off and on, the user is encouraged to try to correct the interference by one or more of the following measures:
-Reorient or relocate the receiving antenna.
-Increase the separation between the equipment and receiver.
-Connect the equipment into an outlet on a circuit different from that to which the receiver is connected.
-Consult the dealer or an experienced radio/TV technician for help.