



## Quick Installation Guide

300Mbps Wireless N PCI-E Adapter

Model No.: H50296

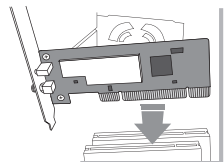
Copyrights 2015 by HIRO All rights reserved. Website: <http://www.hiroinc.com>  
Information in this document is subject to change without prior notice.



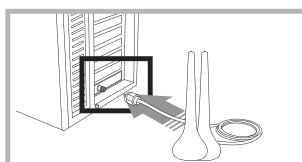
### WLAN Adapter Physical Connection Diagram

Please insert the wireless adapter to you PC before driver installation.

For PCI/PCI-E adapter



**WLAN Adapter Physical Connection**  
Insert the WLAN Adapter into the PC's PCI slot.



**Antenna Physical Connection**  
Connect the interface of antenna to antenna interface of WLAN Adapter.



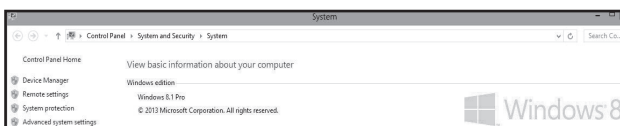
**Note**  
Computer will prompt you to install driver after the adapter has been inserted. Please refer to the steps in "Instruction of Install LAN Adapter Driver"

For more information, please go to [www.hiroinc.com](http://www.hiroinc.com)



### Instruction of Install WLAN Adapter Driver

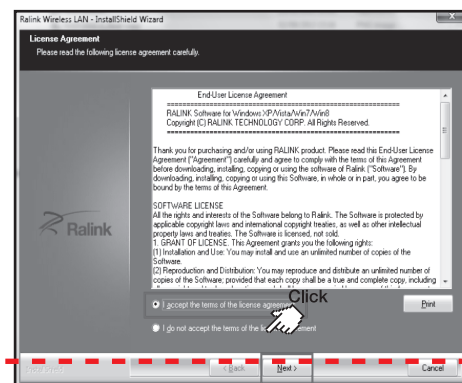
#### 1 Software Installation for Windows8.1



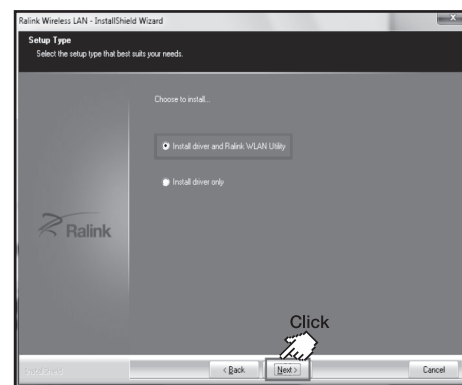
Step 1: Insert Wireless PCI express adapter Installation CD into CD-ROM drive, open the CD-ROM and double click Setup.exe to install PCI express driver.



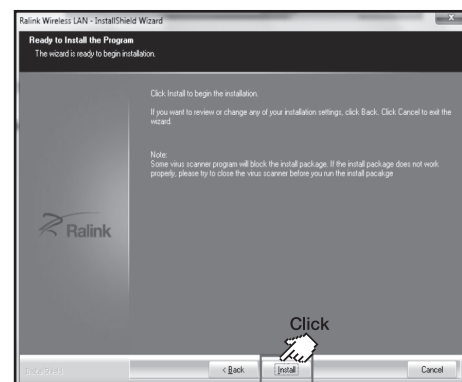
Step 2: Select "I accept the terms of the license agreement" and click Next to continue.



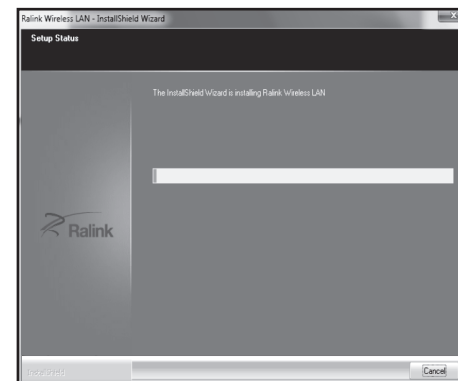
Step 3: Click "Install driver and Ralink WLAN Utility" and click Next to continue.



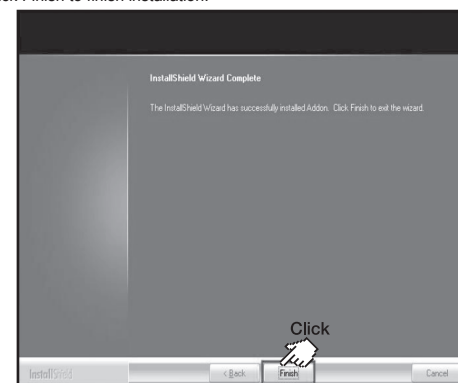
Step 4: Click "Install" to continue.



Step 5: Please wait for a while for installing process.

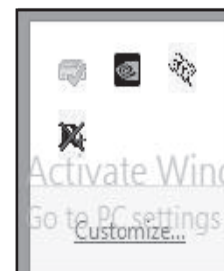


Step 6: Click Finish to finish installation.

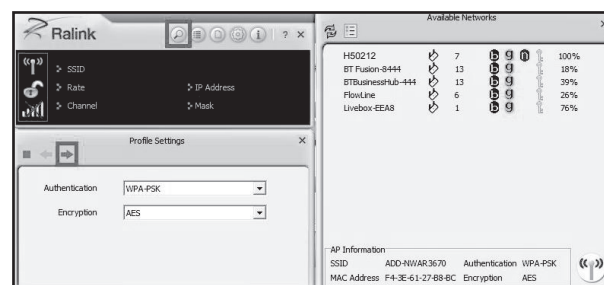


#### 2 Configuring Wireless Network

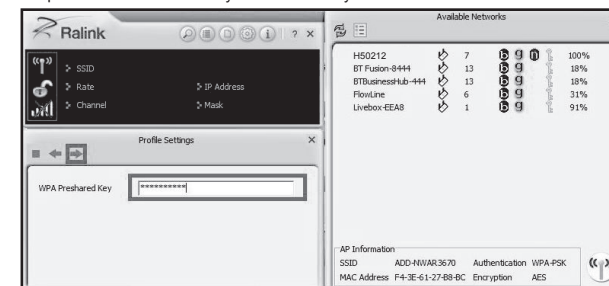
Step 1: Double click on Wireless Utility in the system tray.



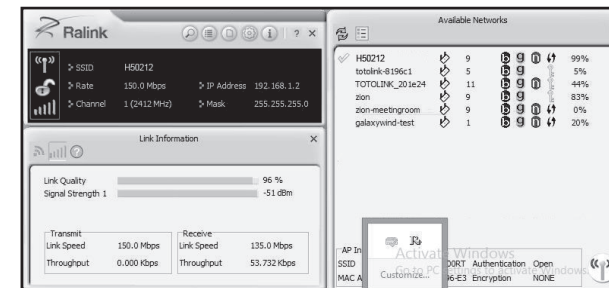
Step 2: You will see the following screen. Click on the button "Available Networks" double click the network you want to connect in the list of Available Networks and click Next button.



Step 3: Enter the network key if it is necessary and click Next button to finish.



Step 4: To check the connection, you will see the IP address and Mask of your computer, point your mouse to the utility icon in the system tray and it will show Status: "Good".



#### FCC Statement

This equipment has been tested and found to comply with the limits for a Class B digital device, pursuant to part 15 of the FCC Rules. These limits are designed to provide reasonable protection against harmful interference in a residential installation. This equipment generates uses and can radiate radio frequency energy and, if not installed and used in accordance with the instructions, may cause harmful interference to radio communications. However, there is no guarantee that interference will not occur in a particular installation. If this equipment does cause harmful interference to radio or television reception, which can be determined by turning the equipment off and on, the user is encouraged to try to correct the interference by one or more of the following measures:

- Reorient or relocate the receiving antenna.
- Increase the separation between the equipment and receiver.
- Connect the equipment into an outlet on a circuit different from that to which the receiver is connected.
- Consult the dealer or an experienced radio/TV technician for help.

#### FCC Radiation Exposure Statement

This device complies with FCC radiation exposure limits set forth for an uncontrolled environment and it also complies with Part 15 of the FCC RF Rules. This equipment must be installed and operated in accordance with provided instructions and the antenna(s) used for this transmitter must be installed to provide a separation distance of at least 20 cm from all persons and must not be co-located or operating in conjunction with any other antenna or transmitter. End-users and installers must be provided with antenna installation instructions and consider removing the no-collocation statement.

This device complies with Part 15 of the FCC Rules. Operation is subject to the following two conditions: (1) this device may not cause harmful interference, and (2) this device must accept any interference received, including interference that may cause undesired operation.

#### Caution!

Any changes or modifications not expressly approved by the party responsible for compliance could void the user's authority to operate the equipment.