

108±1mm

380±2mm

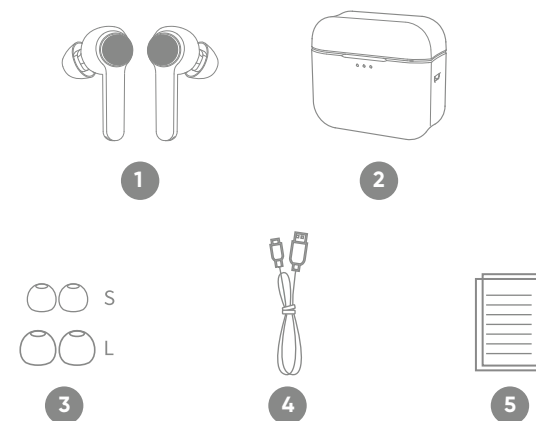
## Bluetooth Headset Quick Start Guide

### Get to Know Your Wireless Earbuds

- 1) Model : A801-12
- 2) Speaker Diameter : 5.8mm
- 3) Speaker Impedance :  $32 \Omega \pm 15\%$
- 4) Sensitivity MEMS Mic : -38dB
- 5) Speaker Driver Rating Power: 2mW
- 6) Charging Cable : 23cm
- 7) 12 hours of total playtime (with charging case)
- 8) IPX5 waterproof rating applies to the earphones, not to the charging case.

### What's in the Box?

Check to make sure you have everything below



1. Earphones x1 pair
2. Charging case x1
3. Eartips x3 pairs, M size installed
4. Micro-USB charging cable x1
5. Quick Start Guide

### Let's Get Started!

On/Off & Pairing

01

Take them out Power On automatically & connect to last paired device

Drop them back and close the charging case. Power Off automatically & disconnect to paired device

For the first time use, open the charging case cover, earphones will go to pairing mode automatically, connect your device by searching for "Keenpuds2"

Press & Hold Each Side for Power On/Off (If you are carrying the earphones without charging case)

If you want to pair with another device, please turn Bluetooth off on your last paired device if it is nearby, then open the charging case cover for pairing.

### Enjoy Your Music

02

**Android** users can further increase volume by pressing right side earphone two times even if your device is at maximum volume.

x2 Press Decrease Volume

x2 Press Increase Volume

Press & Hold Previous Track

Press & Hold Next Track

x1 Press Each Side Play / Pause

x3 Press Each Side Siri / Google Assistant

### Take a Clear Phone Call

03

x2 Press Decrease Volume

x2 Press Increase Volume

x1 Press Each Side Answer

x1 Press Each Side Hangup

Press & Hold Each Side Reject Incoming Call

### Charge Your Earphones

04

**Earphones charging**

L earphone charging : Left side LED light is blinking white  
R earphone charging : Right side LED light is blinking white  
L or R earphone fully charged : The white blinking LED light will be off

**Case charging**

When the charging case is fully charged, 3 LED lights will be on.

⌚ About 2.5 hours

5V 0.5A

### Caricare provides service

05

**WARRANTY CERTIFICATE**

Warning: Changes or modifications to this unit not expressly approved by the party responsible for compliance could void the user's authority to operate the equipment.

NOTE: This equipment has been tested and found to comply with the limits for a Class B digital device, pursuant to Part 15 of the FCC Rules. These limits are designed to provide reasonable protection against harmful interference in a residential installation. This equipment generates, uses and can radiate radio frequency energy and, if not installed and used in accordance with the instructions, may cause harmful interference to radio communications. However, there is no guarantee that interference will not occur in a particular installation. If this equipment does cause harmful interference to radio or television reception, which can be determined by turning the equipment off and on, the user is encouraged to try to correct the interference by one or more of the following measures:

- Reorient or relocate the receiving antenna.
- Increase the separation between the equipment and receiver.
- Connect the equipment into an outlet on a circuit different from that to which the receiver is connected.

Consult the dealer or an experienced radio/TV technician for help. This device complies with Part 15 of the FCC Rules. Operation is subject to the following two conditions:

- (1) this device may not cause harmful interference, and
- (2) this device must accept any interference received, including interference that may cause undesired operation.

95±1mm