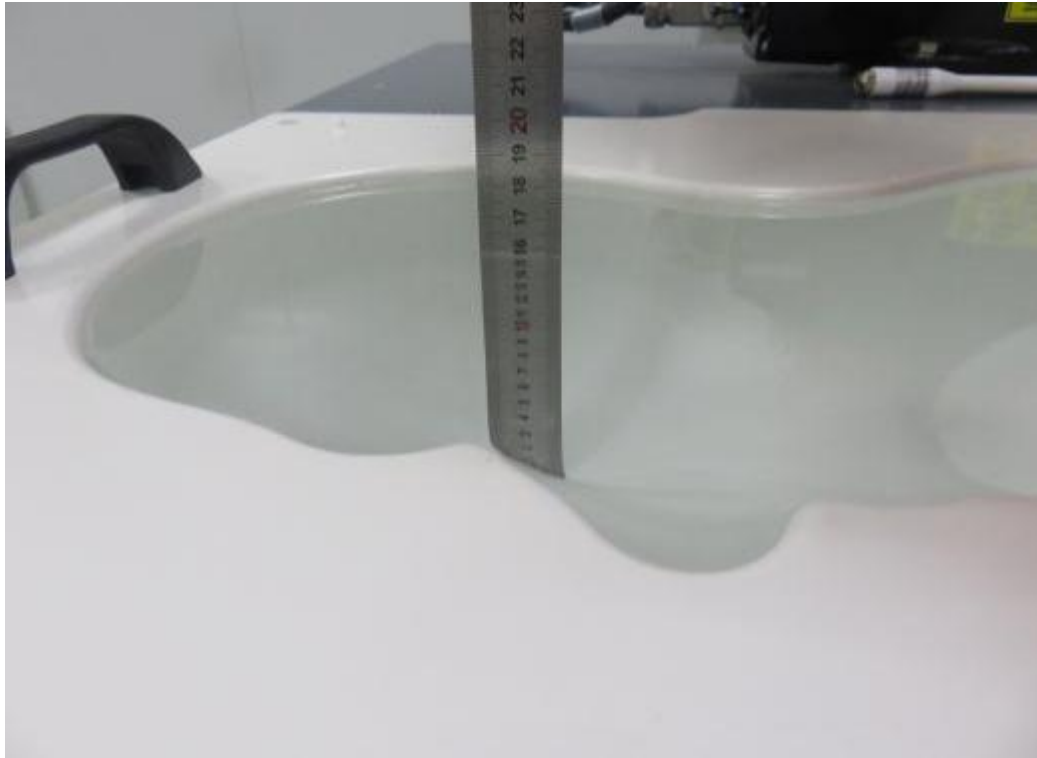
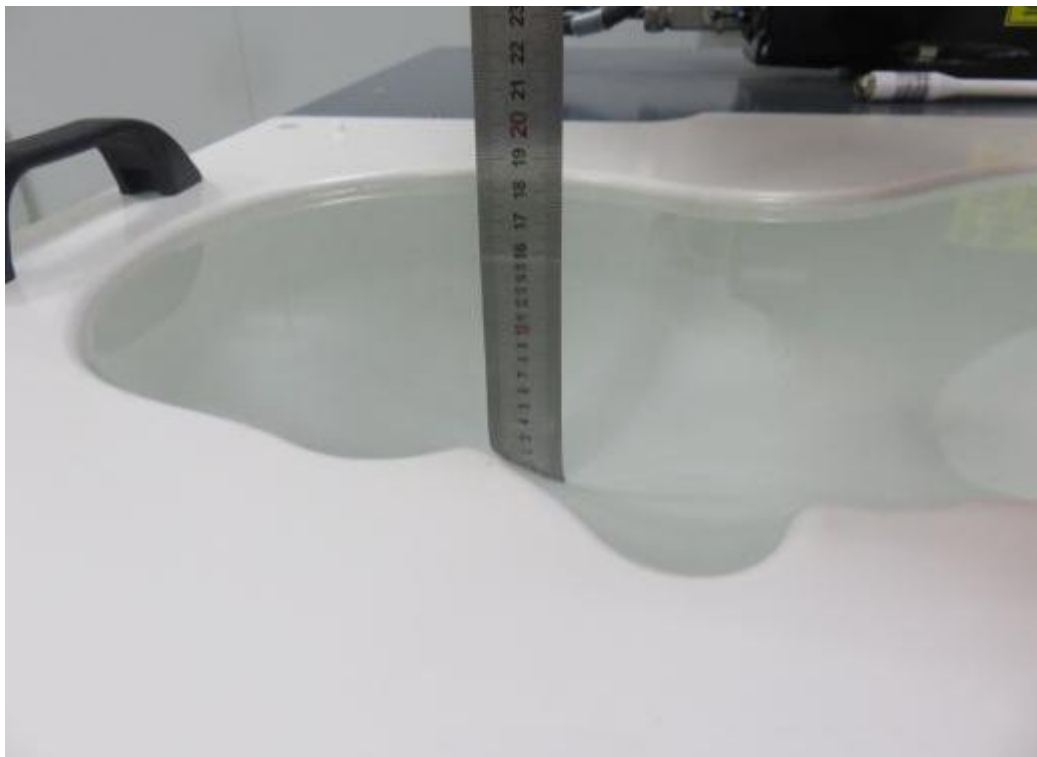


Test Setup Photos of the EUT for SAR

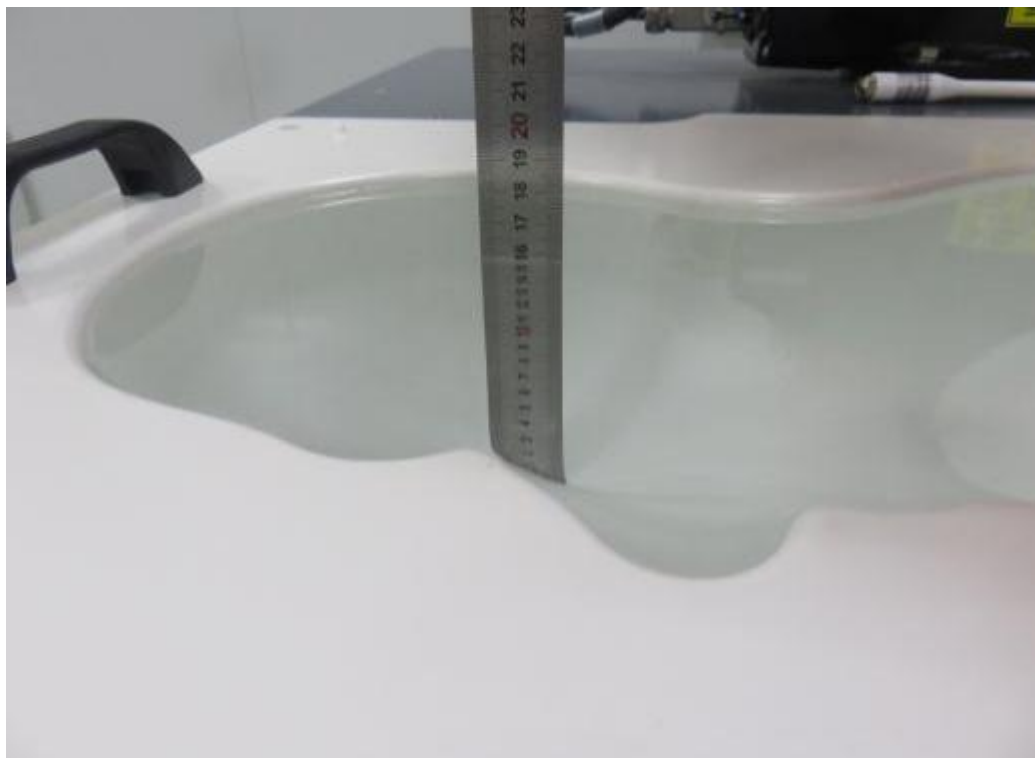
1. Photograph of liquid depth



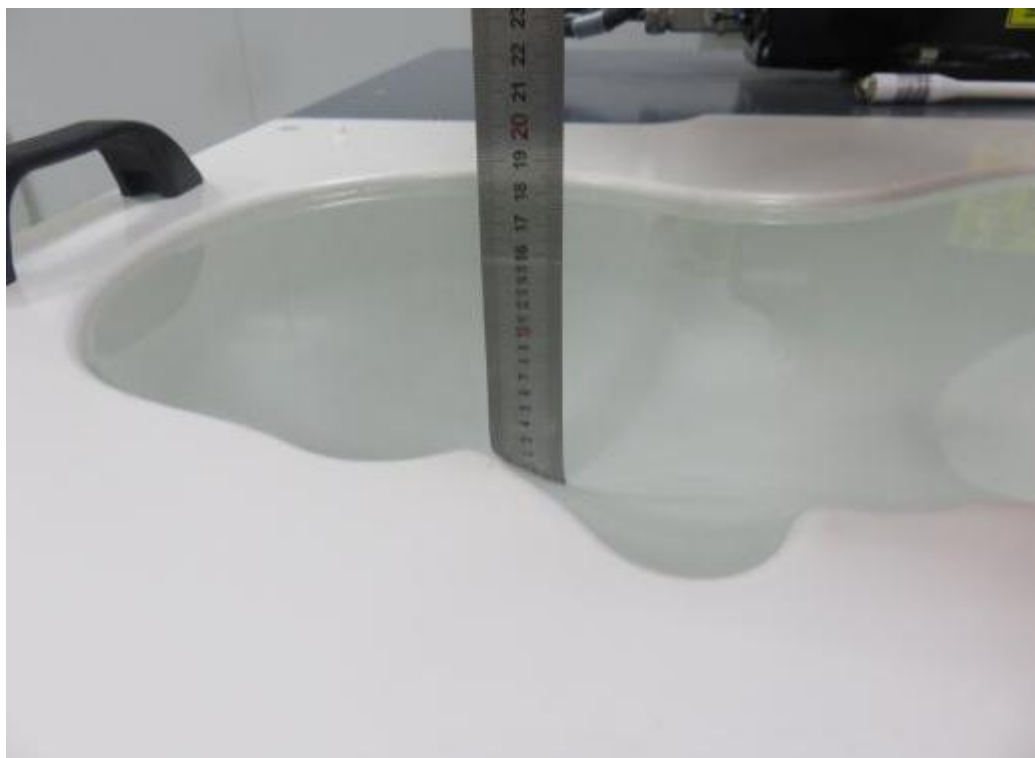
Photograph of the depth in the Head Phantom (750MHz, 15.3cm depth)



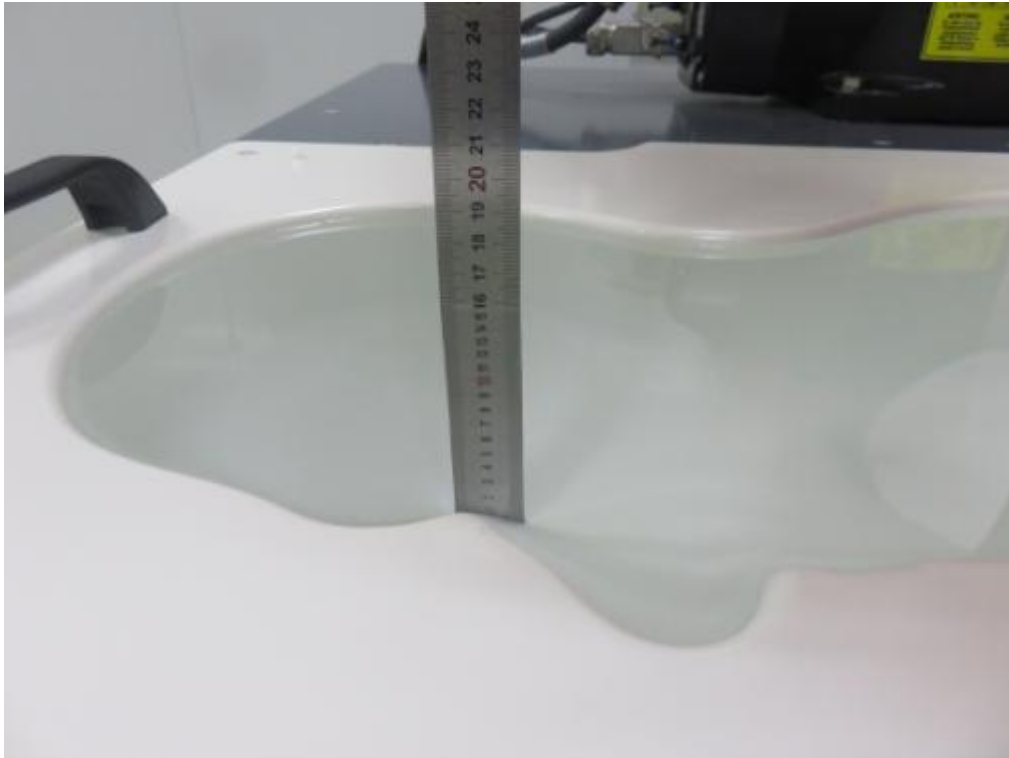
Photograph of the depth in the Head Phantom (835MHz, 15.4cm depth)



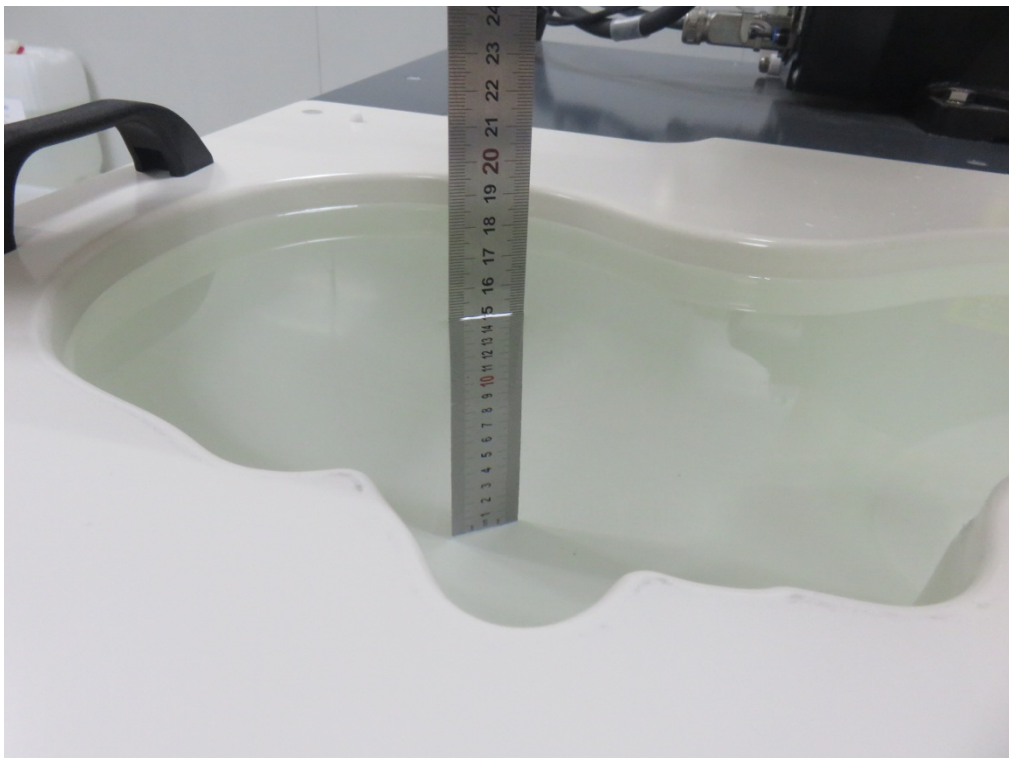
Photograph of the depth in the Head Phantom (1800MHz, 15.3cm depth)



Photograph of the depth in the Head Phantom (1900MHz, 15.2cm depth)



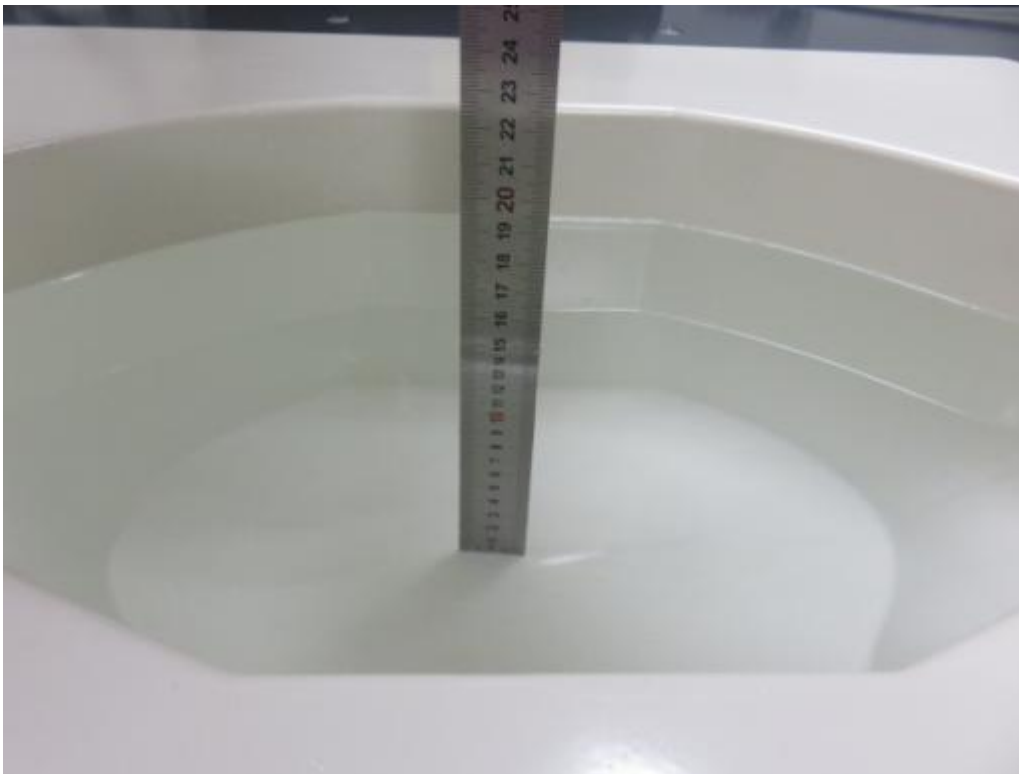
Photograph of the depth in the Head Phantom (2450MHz, 15.3cm depth)



Photograph of the depth in the Head Phantom (2600MHz, 15.5cm depth)



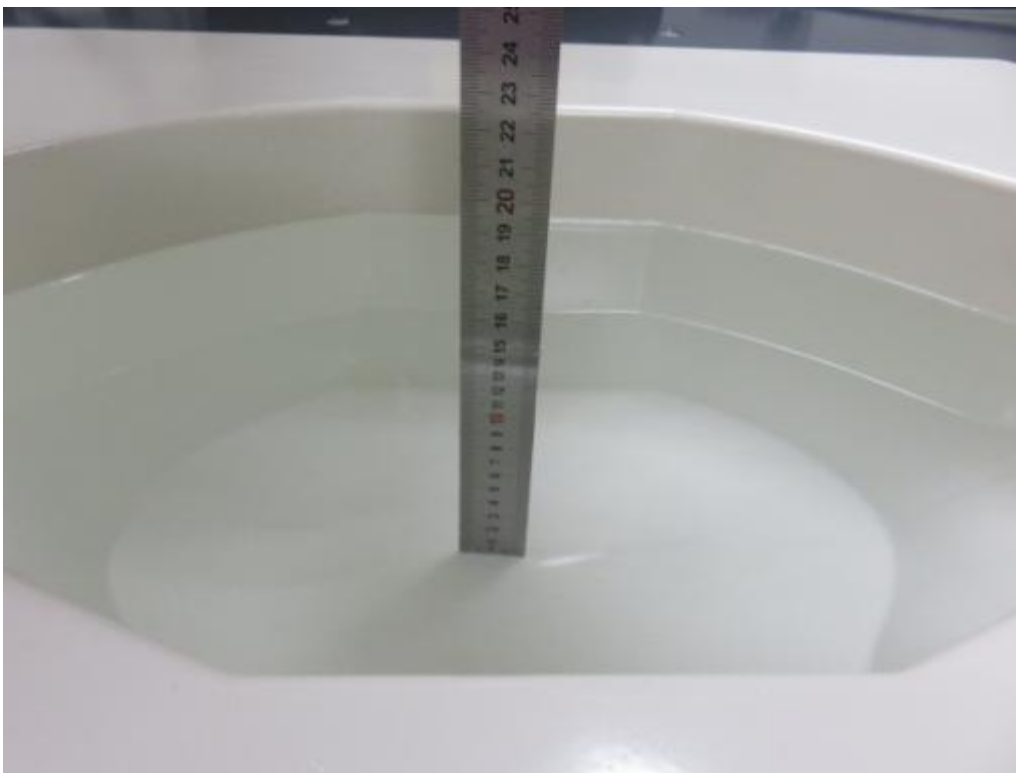
Photograph of the depth in the Body Phantom (750MHz, 15.4cm depth)



Photograph of the depth in the Body Phantom (835MHz, 15.2cm depth)



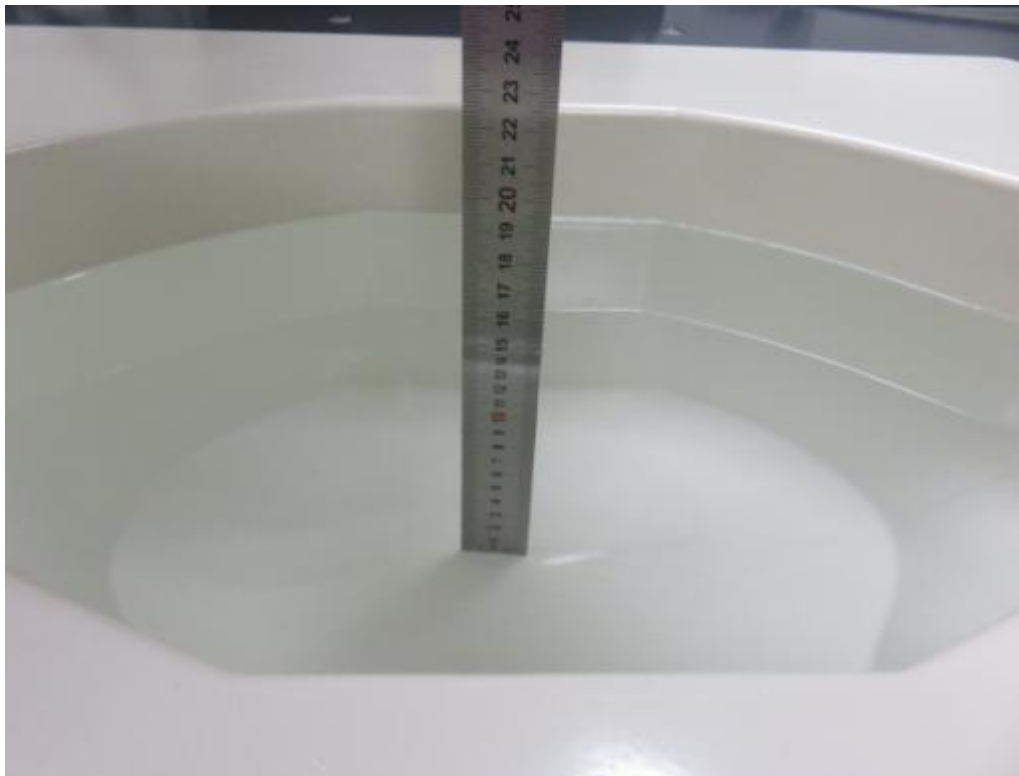
Photograph of the depth in the Body Phantom (1800MHz, 15.2cm depth)



Photograph of the depth in the Body Phantom (1900MHz, 15.4 cm depth)



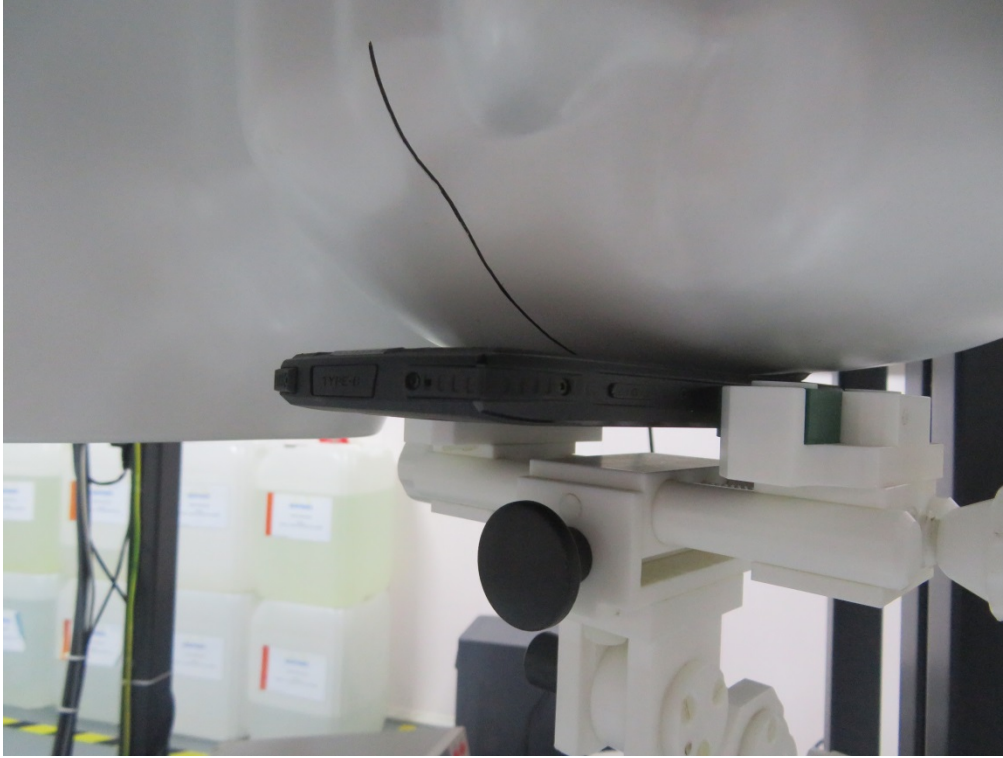
Photograph of the depth in the Body Phantom (2450MHz, 15.3cm depth)



Photograph of the depth in the Body Phantom (2600MHz, 15.2cm depth)

2. Photograph of the Test

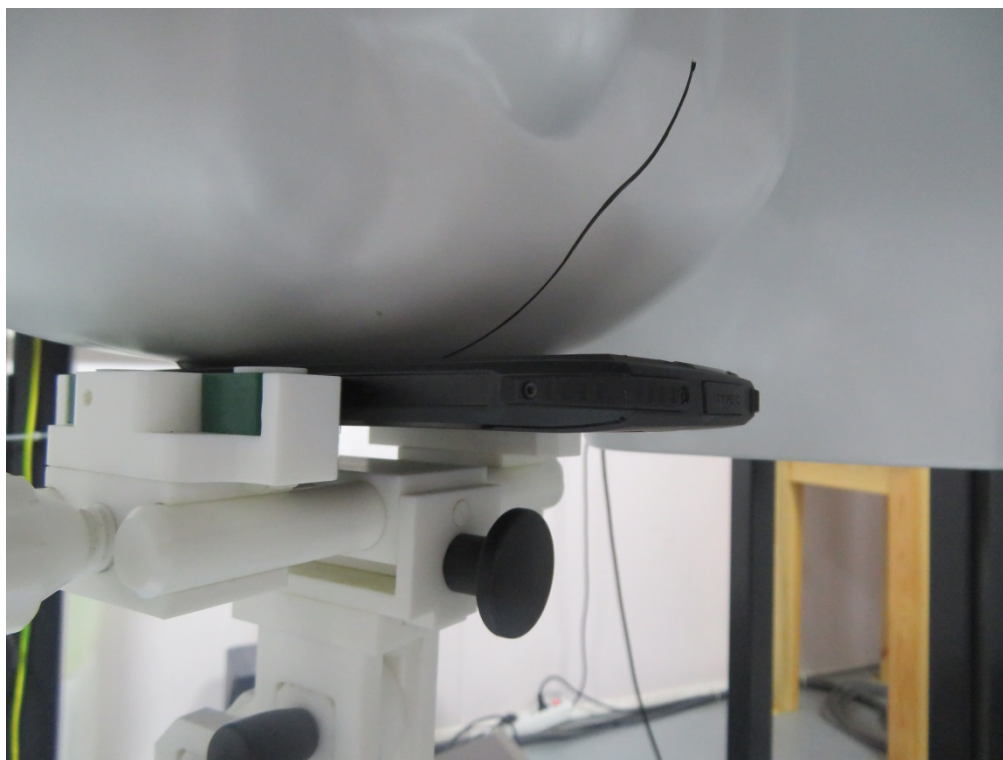
Head Setup Photo (Left Cheek)



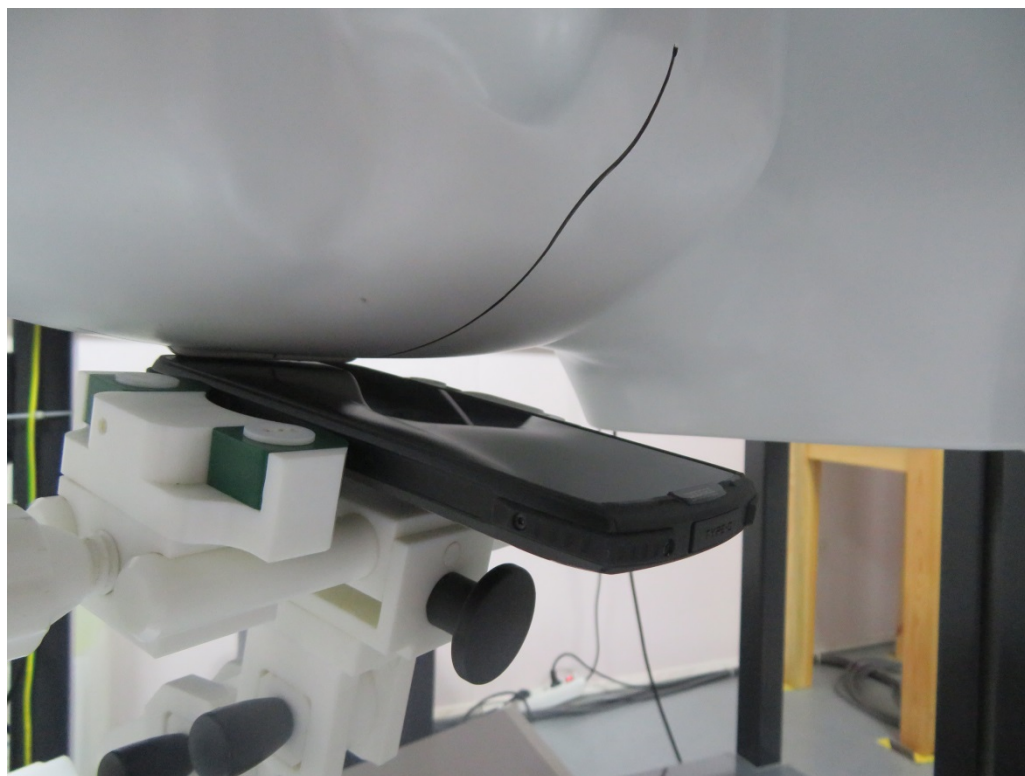
Head Setup Photo (Left Tilt)



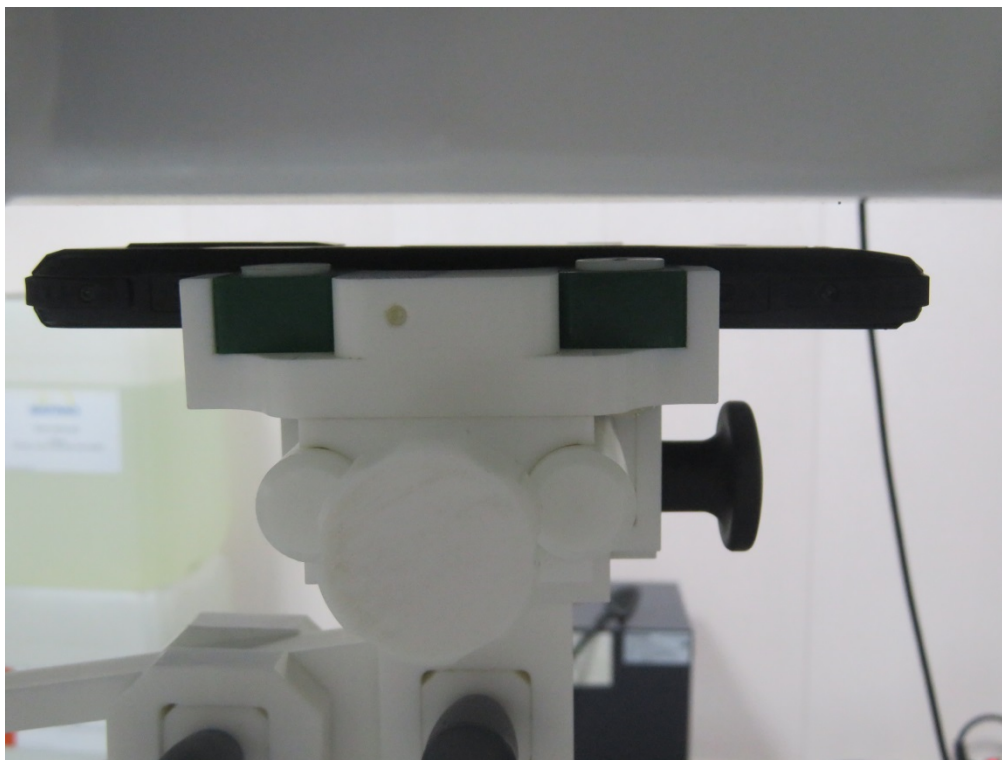
Head Setup Photo (Right Cheek)



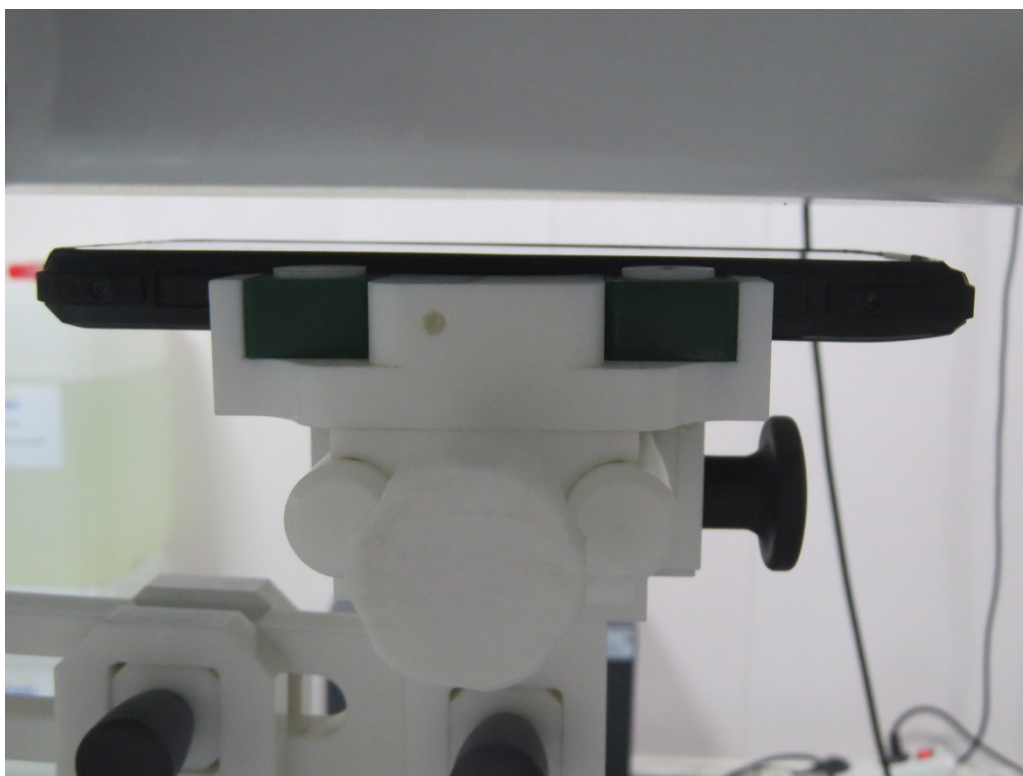
Head Setup Photo (Right Tilt)



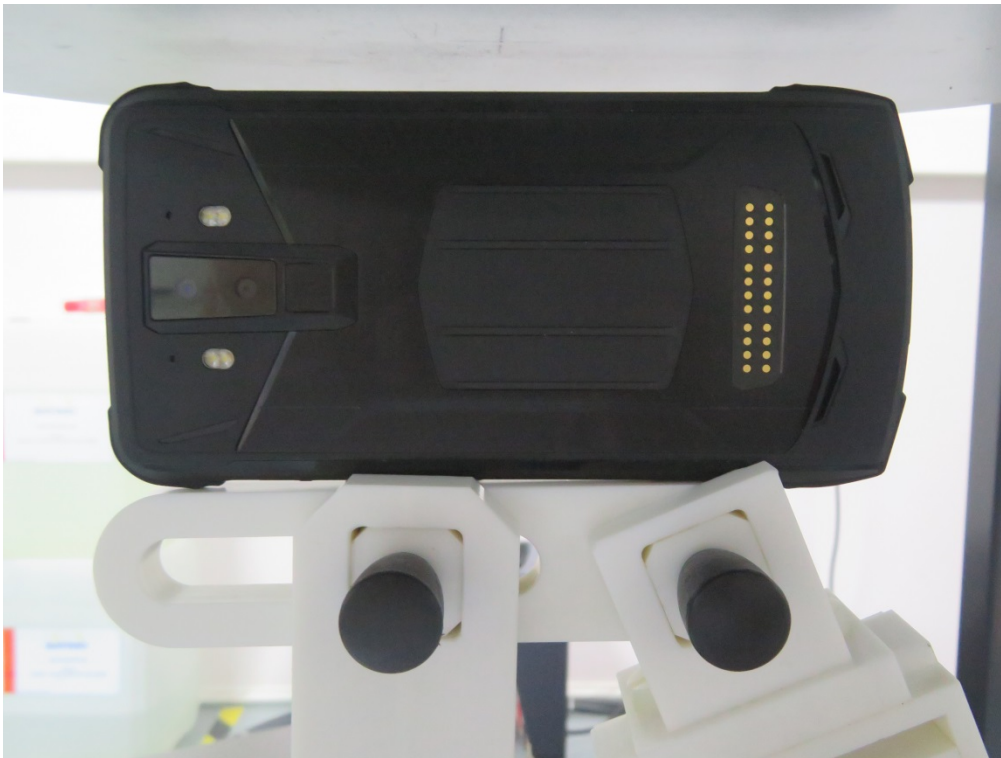
10mm body-worn Back Side Setup Photo (hotspot)



10mm body-worn Front Side Setup Photo (hotspot)



10mm body-worn Left Side Setup Photo (hotspot)



10mm body-worn Top Side Setup Photo (hotspot)



10mm body-worn Bottom Side Setup Photo (hotspot)

