

DS-PS1-E-WA Wireless External Sounder Quick Start Guide

EN 50131-1:2006+A2:2017
EN 50131-4:2019
EN 50131-6:2017
EN 50131-5-3:2017
Security Grade(SG) 2
Environmental Class(EC) IV
Certified by Telefication

English

1 Appearance

1. Strobe Light
2. Water-Proof Transparency Cover
3. Tamper Switch
4. Buzzer
5. Battery Connector
6. Power Switch
7. 12 VDC Power Terminal
8. Power Cable Knock Out
9. Gradienter
10. Indicator

2 Power On

Battery Power
12 VDC Power

3 Enrollment

4 Installation

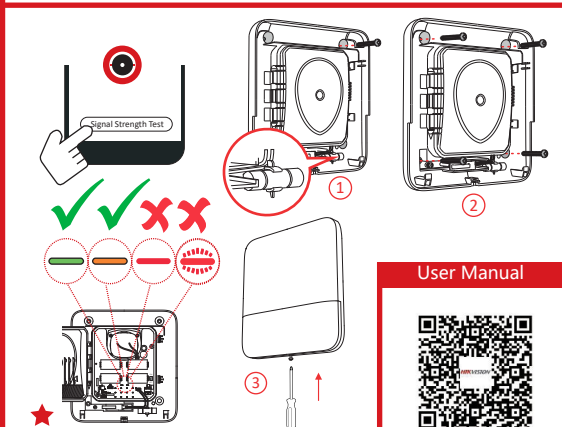
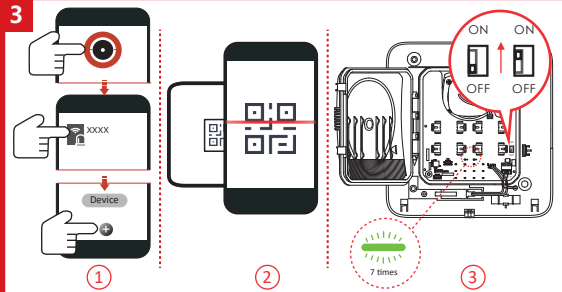
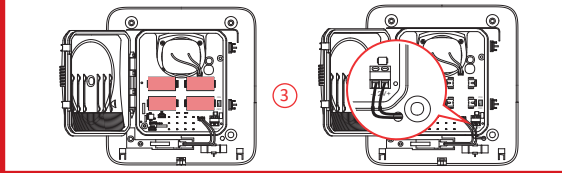
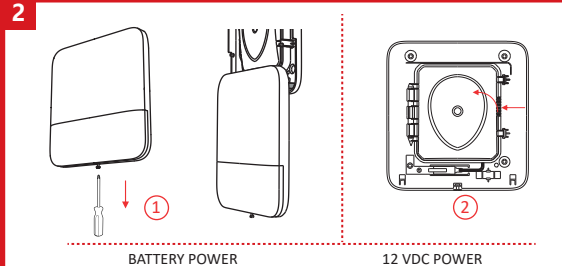
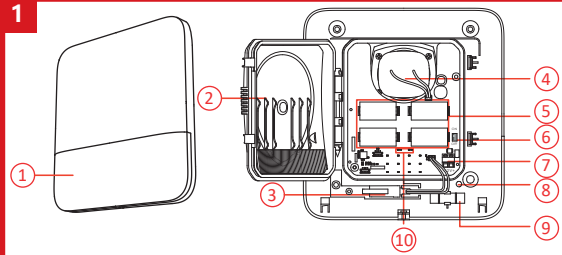
- ★ Check signal strength.
- Note: for 12 VDC power supply, route the cables before installation.

User Manual

Scan the QR code for more information and operation help.

Specification

RF	Frequency	915 MHz
	Method	Two-way communication
	Distance	1.8KM
Indication	Indicator	Red/Green
	Strobe light	Red/Blue (white on the board)
Power	Power	Battery (default power supply method) or 12 VDC
	Consumption	Quiescent Current: 40uA Battery: Max. 3 V/6h (alerts in volume level 3) 12 VDC: Max. 12 W/1.3A (alerts in volume level 3)
	Low Battery Cut Off	2.45 V
	Voltage Range	fully charged (equal to 2.45V DC (battery))
Interface	Battery life span	4-12/13A, 3 years in work status(triggered every two weeks and alerting 90 s for each triggering)
	Power switch	Power switch
	Tamper switch	Force and rear tamper-proof
Buzzer	Peak Decibels	102 dB
	Max. Sound Duration	15min (900s)
General	Operation Temperature	-25 °C to 60 °C (-13 °F to 140 °F)
	Operation Humidity	10% to 90%
	Material	PC+ABS
	Dimension (W × H × D)	100 × 200 × 47.3mm (7.48" × 7.87" × 1.86")
	Weight	62g/5g
Protection Level	IP65	
Installation	Wall mounting	



User Manual



This product and, if applicable, the supplied accessories too are marked with "CE" and comply therefore with the applicable harmonized European standards listed under the RE Directive 2014/53/EU, the EMC Directive 2014/53/EU, the RoHS Directive 2011/65/EU 2012/19/EU (WEEE directive). Products marked with this symbol cannot be disposed of as unsorted municipal waste in the European Union. For proper recycling, return this product to your local supplier upon the purchase of equivalent new equipment, or dispose of it at designated collection points. For more information see: www.recycling.info



2006/66/EC (battery directive): This product contains a battery that cannot be disposed of as unsorted municipal waste in the European Union. See the product documentation for specific battery information. The battery is marked with this symbol, which may include lettering to indicate cadmium (Cd), lead (Pb), or mercury (Hg). For proper recycling, return the battery to your supplier or to a designated collection point. For more information see: www.recycling.info

BATTERY CAUTION

replacement of a battery with an incorrect type that can defeat a safeguard (for example, in the case of some lithium battery types);

- disposal of a battery into fire or a hot oven, or mechanically crushing or cutting of a battery, that can result in an explosion;
- leaving a battery in an extremely high temperature surrounding environment that can result in an explosion or the leakage of flammable liquid or gas; and
- a battery subjected to extremely low air pressure that may result in an explosion or the leakage of flammable liquid or gas

Chemical burning danger

Do not swallow the battery.

Keep new and used batteries away from the children.

If you think batteries might have been swallowed or placed inside any part of the body, seek immediate medical attention.

Risk of explosion if battery is replaced by an incorrect type.

Replacement of a battery with an incorrect type that can defeat a safeguard.

Dispose of used batteries according to the instructions and local regulation.

If the battery compartment does not close securely, stop using the product and keep it away from children.

Install the battery according to the polarity mark on the battery holder. The opposite polarity may cause device damage.

INSTALLATION CAUTION

The additional force shall be equal to three times the weight of the equipment but not less than 50N. The equipment and its associated mounting means shall remain secure during the installation. After the installation, the equipment, including any associated mounting plate, shall not be damaged.

Install the device on the place with nonflammable surface, such as concrete wall.



FCC Information

Please take attention that changes or modification not expressly approved by the party responsible for compliance could void the user's authority to operate the equipment. This device complies with Part 15 of the FCC Rules. Operation is subject to the following two conditions:

- (1) This device may not cause harmful interference, and
- (2) This device must accept any interference received, including interference that may cause undesired operation.

This equipment complies with FCC radiation exposure limits set forth for an uncontrolled environment. This equipment should be installed and operated with minimum distance 20cm between the radiator & your body.