

English

1 APPEARANCE

1. Strobe Light
2. Buzzer
3. Cable Hole
4. Set Screw
5. Tamper Screw Hole
6. Tamper Button
7. Power Switch

2 ENROLLMENT

3 INSTALLATION

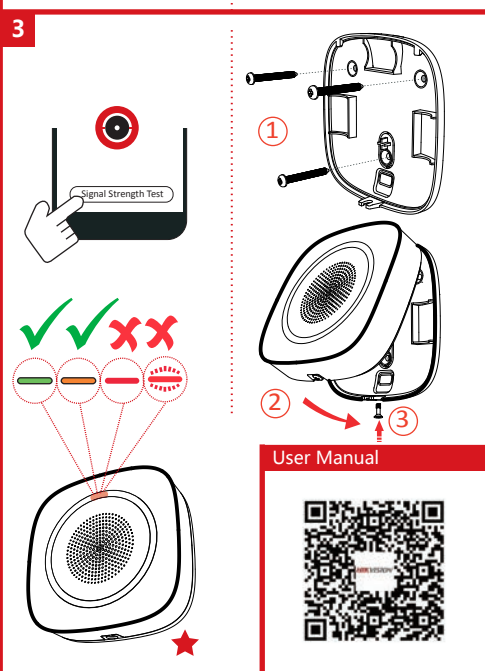
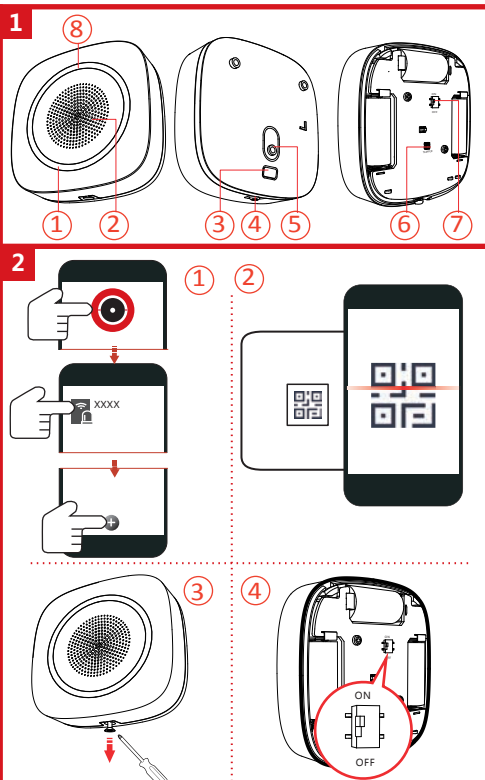
- ★ Check signal strength.
8. Indicator

User Manual

Scan the QR code for more information and operation help.

Specification

RF	Frequency	433.1 MHz
	Metod	Two-way communication
Indication	Distance	0.8 km
	Indicator	Red/Green/Amber
Power	Strobe Light	Red/Blue
	Power	Battery (default power supply method)
	Consumption	Quiescent Current: 40uA
	Low Battery Cut Off	Max. 3 V/4A (alerts in volume level 3)
Interface	Voltage Range	2.45 V
	Battery life span	Fully charged (new) to 2.45V DC (battery) 3 CR123A, 3 years in work status (triggered every two weeks and alerting 90 s for each triggering)
Buzzer	Power switch	Power switch
	Describe	Front and rear tamper-proof
General	Max. sound duration	90 to 110 dB
	Operation	-10 °C to 40 °C (14 °F to 104 °F)
	Temperature	10% to 90%
	Operation Humidity	10% to 90%
Weight	Dimension(W x H x D)	88* 88 x 32 mm(3.46" x 3.46" x 1.26")
	Weight	169.5g
	Installation	Wall mounting



Español

1 ASPECTO

1. Luz estroboscópica
2. Timbre
3. Perforación para el cable
4. Tornillo de fijación
5. Agujero para el tornillo de manipulación
6. Botón de manipulación
7. Interruptor de alimentación
8. Piloto

2 REGISTRO

3 INSTALACIÓN

- ★ Comprobar la intensidad de la señal.

Manual de usuario

Escanee el código QR para obtener más información y ayuda sobre el funcionamiento.

Especificación

Radiofrecuencia	Frecuencia	433.1 MHz
	Método	Comunicación bidireccional
Indicación	Distancia	0,8 km
	Piloto	Rojo/verde
Alimentación	Luz estroboscópica	Rojo/azul
	Consumo	Consumo estático: 30-40 uA
Duración de las pilas	Alimentación	Batería (método de alimentación por defecto)
	Consumo	Consumo estático: 30-40 uA
Duración de las pilas	Duración de las pilas	3 baterías CR123A, 3 años de funcionamiento (activación cada dos semanas y alertas de 90 s por cada activación)
	Consumo	Consumo estático: 30-40 uA
Interruptor de alimentación	Interruptor de alimentación	Interruptor de alimentación
	Interruptor antimanipulación	Protectores contra manipulación frontal y trasero
Timbre	Decibelios	90 a 110 dB
	Temperatura de funcionamiento	De -10 °C a +55 °C
General	Humedad de funcionamiento	10 % a 90 %
	Instalación	Montaje en la pared

Português

1 ASPETO

1. Luz estroboscópica
2. Campainha
3. Orifício do cabo
4. Parafuso de fixação
5. Orifício do parafuso de aduiteração
6. Botão de aduiteração
7. Interruptor Ligar/Desligar
8. Indicador

2 REGISTO

3 INSTALAÇÃO

- ★ Verifique a intensidade do sinal.

Manual de utilizador

Faça a leitura do código QR para obter mais informações e ajuda sobre o funcionamento.

Especificações

RF	Frequência	433 MHz
	Método	Comunicação bidirecional
Indicação	Distância	0,8 km
	Indicador	Vermelho/Verde
Potência	Luz estroboscópica	Vermelha/Azul
	Consumo	Bateria (método de alimentação predefinido)
Durabilidade da bateria	Duração da bateria	Consumo estático: 30 a 40 uA
	Duração da bateria	3 CR123A, 3 anos em estado de funcionamento (acionado de 2 em 2 semanas e 90 segundos de alerta em cada acionamento)
Interface	Interruptor de alimentação	Interruptor de alimentação
	Interruptor de aduiteração	A prova de aduiteração na parte dianteira e traseira
Campainha	Decibel	90 a 110 dB
	Temperatura de funcionamento	-10 °C a +55 °C
Geral	Humidade de funcionamento	10% a 90%
	Instalação	Montagem na parede

FCC Information
Please take attention that changes or modification not expressly approved by the party responsible for compliance could void the user's authority to operate the equipment.
FCC compliance: This equipment has been tested and found to comply with the limits for a Class B digital device, pursuant to part 15 of the FCC Rules. These limits are designed to provide reasonable protection against harmful interference in a residential installation. This equipment generates, uses and can radiate radio frequency energy and, if not installed and used in accordance with the instructions, may cause harmful interference to radio communications. However, there is no guarantee that interference will not occur in a particular installation. If this equipment does cause harmful interference to radio or television reception, which can be determined by turning the equipment off and on, the user is encouraged to try to correct the interference by one or more of the following measures:
—Reorient or relocate the receiving antenna.
—Increase the separation between the equipment and receiver.
—Connect the equipment into an outlet on a circuit different from that to which the receiver is connected.
—Consult the dealer or an experienced radio/TV technician for help.

FCC Conditions
This device complies with part 15 of the FCC Rules. Operation is subject to the following two conditions:
1. This device may not cause harmful interference.
2. This device must accept any interference received, including interference that may cause undesired operation.

Este produto, e em seu caso também os acessórios suministrados, tem a marca "CE" e por tanto cumpre com as normas europeias armonizadas aplicáveis enunciatedas na Directiva de equipos de radio 2014/53/UE, la Directiva de compatibilidad electromagnética 2014/30/UE y la Directiva de restricción del uso de sustancias peligrosas 2011/65/UE.
2012/19/UE (directiva RAEE): residuos de aparatos eléctricos y electrónicos (RAEE). En la Unión Europea, los productos marcados con este símbolo no pueden ser desechados en el sistema de basura municipal sin recogida selectiva. Para un reciclaje adecuado, entregue este producto en el lugar de compra del equipo nuevo equivalente o deséchelo en el punto de recogida designado a tal efecto. Para ver más información, visite: www.recyclethis.info
DIRECTIVA (directiva sobre baterías): Este producto lleva una batería que no puede ser desechada en el sistema municipal de basuras sin recogida selectiva dentro de la Unión Europea. Consulte la documentación del producto para ver la información específica de la batería, la batería tiene marcado este símbolo, que incluye una flecha indicando el contenedor (Pb), o (mercurio Hg). Para un reciclaje adecuado, entregue la batería a su vendedor o lleve-la al punto de recogida de basuras designado a tal efecto. Para más información, visite: www.recyclethis.info

PRECAUCIONES RELATIVAS A LA BATERÍA
El producto no debe ser expuesto al fuego o a un horno a alta temperatura, o medicación, apabastada o combustión, dar lugar a una explosión o a la fuga de líquido inflamativo.
El producto no debe ser expuesto a un entorno circundante con la temperatura extremadamente alta que dar lugar a una explosión o a la fuga de líquido inflamativo.
El producto no debe ser expuesto a un entorno circundante de aire extremadamente bajo que dar lugar a una explosión o a la fuga de líquido inflamativo.
PRECAUCIONES RELATIVAS A LA BATERÍA
No se debe fumar, consumir alcohol o ingerir alimentos y bebidas cuando se manipule el producto.
Este producto puede contener baterías. No se debe fumar, consumir alcohol o ingerir alimentos y bebidas cuando se manipule el producto.
Este producto puede contener baterías. No se debe fumar, consumir alcohol o ingerir alimentos y bebidas cuando se manipule el producto.
PRECAUCIONES RELATIVAS A LA BATERÍA
La fuerza adicional debe ser equivalente a tres veces el peso del equipo, pero no inferior a 50 N e igual o el soporte asociado de montaje asociado, no deben estar disueltos.
Instale el dispositivo en una superficie no inflamable, por ejemplo, una pared de hormigón.

©2020 Hangzhou Hikvision Digital Technology Co., Ltd. All rights reserved.
About this Manual:
The instructions for using and managing the Product, Pictures, charts, images and all other information hereinafter are for description and explanation only. The information contained in the Manual is subject to change without notice due to firmware updates or other reasons. Please find the latest version of this Manual at the Hikvision website (<https://www.hikvision.com/>).
Please use this Manual with the guidance and assistance of professionals trained in supporting the Product.

Hikvision and other Hikvision's trademarks and logos are the properties of Hikvision in various jurisdictions. Other trademarks and logos mentioned are the properties of their respective owners.
TO THE MAXIMUM EXTENT PERMITTED BY APPLICABLE LAW, THIS MANUAL AND THE PRODUCT DESCRIBED, WITH ITS HARDWARE, SOFTWARE AND FIRMWARE, ARE PROVIDED "AS IS" AND "WITH ALL FAULTS AND ERRORS." HIKVISION MAKES NO WARRANTIES, EXPRESS OR IMPLIED, INCLUDING WITHOUT LIMITATION, ANY WARRANTY OF SATISFACTORY QUALITY OR FITNESS FOR A PARTICULAR PURPOSE. THE USE OF THE PRODUCT BY YOU IS AT YOUR OWN RISK. IN NO EVENT WILL HIKVISION BE LIABLE TO YOU FOR ANY SPECIAL, CONSEQUENTIAL, INCIDENTAL OR INDIRECT DAMAGES, INCLUDING, AMONG OTHERS, DAMAGES FOR LOSS OF BUSINESS PROFITS, BUSINESS INTERRUPTION, OR LOSS OF DATA, CORRUPTION OF SYSTEMS, LOSS OF INFORMATION, OR ANY OTHER DAMAGES OF ANY KIND, WHETHER CAUSED BY CONTRACT, NEGLIGENCE, OR OTHERWISE. HIKVISION DISCLAIMS ALL WARRANTIES, INCLUDING WITHOUT LIMITATION, ANY WARRANTY OF MERCHANTABILITY, FITNESS FOR A PARTICULAR PURPOSE, AND NON-INFRINGEMENT. HIKVISION SHALL NOT TAKE ANY RESPONSIBILITY FOR ABNORMAL OPERATION, PRIVACY LEAKAGE OR OTHER DAMAGES RESULTING FROM CYBERATTACK, HACKER ATTACK, VIRUS INFECTION, OR OTHER INTERNET SECURITY RISKS. HOWEVER, HIKVISION WILL PROVIDE TIMELY TECHNICAL SUPPORT IF REQUIRED.
YOU AGREE TO USE THIS PRODUCT IN COMPLIANCE WITH ALL APPLICABLE LAWS, AND YOU ARE SOLELY RESPONSIBLE FOR ENSURING THAT YOUR USE COMPLIES WITH THE APPLICABLE LAW, ESPECIALLY YOU ARE RESPONSIBLE FOR USING THIS PRODUCT IN A MANNER THAT DOES NOT INFRINGE ON THE RIGHTS OF THIRD PARTIES, INCLUDING WITHOUT LIMITATION, RIGHTS OF PUBLICITY, INTELLECTUAL PROPERTY RIGHTS, OR DATA PROTECTION AND OTHER PRIVACY RIGHTS. YOU SHALL NOT USE THIS PRODUCT FOR ANY PROHIBITED END-USAGES, INCLUDING THE DEVELOPMENT OR PRODUCTION OF WEAPONS OF MASS DESTRUCTION, THE DEVELOPMENT OR PRODUCTION OF CHEMICAL OR BIOLOGICAL WEAPONS, ANY ACTIVITIES IN THE CONTEXT RELATED TO ANY NUCLEAR EXPLOSIVE OR UNLAWFUL NUCLEAR FUEL CYCLE, OR IN SUPPORT OF HUMAN RIGHTS ABUSES. IN THE EVENT OF ANY CONFLICTS BETWEEN THIS MANUAL AND THE APPLICABLE LAW, THE LATER PREVAILS.

This product and - if applicable - the supplied accessories too are marked with "CE" and comply therefore with the following harmonized European standards: listed under the RE Directive 2014/53/UE, the EMC Directive 2014/30/UE, the RoHS Directive 2011/65/UE.
2012/19/UE (WEEE directive): Products marked with this symbol cannot be disposed of as unsorted municipal waste in the European Union. For proper disposal, return this product to your local supplier upon the purchase of equivalent new equipment, or dispose of it at a designated collection point. For more information see: www.recyclethis.info
2006/66/EC (Battery directive): This product contains a battery that cannot be disposed of as unsorted municipal waste in the European Union. For proper disposal, return this product to your local supplier upon the purchase of equivalent new equipment, or dispose of it at a designated collection point. For more information see: www.recyclethis.info

BATTERY CAUTION
Replacement of a battery with an incorrect type that can defeat a safeguard (for example, in the case of some lithium-ion batteries):
— disposal of a battery into fire or a hot oven, or mechanically crushing or cutting of a battery, that can result in an explosion;
— leaving a battery in an extremely high temperature surrounding environment that can result in an explosion or the leakage of flammable liquid or gas;
— a battery subjected to extremely low air pressure that may result in an explosion or the leakage of flammable liquid or gas.
Chemical burning danger
Do not swallow battery.
Keep new and used batteries away from the children.
— If you think batteries might have been swallowed or placed inside any part of the body, seek immediate medical attention.
Risk of explosion if battery is replaced by an incorrect type.
Replacement of a battery with an incorrect type that can defeat a safeguard.
Disposal of used batteries according to the instructions and local regulations.
If the battery compartment does not close securely, stop using the product and keep it away from children.
Install the batteries according to the polarity mark on the battery holder. The opposite polarity may cause device damage.

INSTALLATION CAUTION
The additional force shall be equal to three times the weight of the equipment but not less than 50N. The equipment and its associated mounting means shall remain secure during the installation. After the installation, the equipment, including any associated mounting plate, shall not move.
Install the device on the place with nonflammable surface, such as concrete wall.