



Quick Start Guide



If the QR Code
is missing from
this space,
please scan the
QR Code on the
actual product.

Scan the QR code with the Hik-Connect App to add the device to your account. Please keep it for further reference.

COPYRIGHT © 2020–2021 Hikvision USA Inc. and Hikvision Canada Inc. ALL RIGHTS RESERVED.

Any and all information, including, among others, wordings, pictures, graphs are the properties of Hangzhou Hikvision Software Co., Ltd. (hereinafter referred to as “Hikvision”). This user manual (hereinafter referred to as “the Manual”) cannot be reproduced, changed, translated, or distributed, partially or wholly, by any means, without the prior written permission of Hikvision. Unless otherwise stipulated, Hikvision does not make any warranties, guarantees or representations, express or implied, regarding to the Manual.

About this Manual

The Manual includes instructions for using and managing the product. Pictures, charts, images, and all other information hereinafter are for description and explanation only. The information contained in the Manual is subject to change, without notice, due to firmware updates or other reasons. Please find the latest version in the Hikvision Website (<https://us.hikvision.com/en>).

Revision Record

New release – May 2021

Trademarks Acknowledgement

HIKVISION and other Hikvision trademarks and logos are the properties of Hikvision in various jurisdictions. Other trademarks and logos mentioned below are the properties of their respective owners.

Legal Disclaimer

TO THE MAXIMUM EXTENT PERMITTED BY APPLICABLE LAW, THE PRODUCT DESCRIBED, WITH ITS HARDWARE, SOFTWARE, AND FIRMWARE, IS PROVIDED “AS IS,” WITH ALL FAULTS AND ERRORS, AND HIKVISION MAKES NO WARRANTIES, EXPRESS OR IMPLIED, INCLUDING WITHOUT LIMITATION, MERCHANTABILITY, SATISFACTORY QUALITY, FITNESS FOR A PARTICULAR PURPOSE, AND NON-INFRINGEMENT OF THIRD PARTY. IN NO EVENT WILL HIKVISION, ITS DIRECTORS, OFFICERS, EMPLOYEES, OR AGENTS BE LIABLE TO YOU FOR ANY SPECIAL, CONSEQUENTIAL, INCIDENTAL, OR INDIRECT DAMAGES, INCLUDING, AMONG OTHERS, DAMAGES FOR LOSS OF BUSINESS PROFITS, BUSINESS INTERRUPTION, OR LOSS OF DATA OR DOCUMENTATION, IN CONNECTION WITH THE USE OF THIS PRODUCT, EVEN IF HIKVISION HAS BEEN ADVISED OF THE POSSIBILITY OF SUCH DAMAGES.

TO THE MAXIMUM EXTENT PERMITTED BY APPLICABLE LAW, IN NO EVENT SHALL HIKVISION'S TOTAL LIABILITY FOR ALL DAMAGES EXCEED THE ORIGINAL PURCHASE PRICE OF THE PRODUCT.

HIKVISION DOES NOT UNDERTAKE ANY LIABILITY FOR PERSONAL INJURY OR PROPERTY DAMAGE AS THE RESULT OF PRODUCT INTERRUPTION OR SERVICE TERMINATION CAUSED BY: A) IMPROPER INSTALLATION OR USAGE OTHER THAN AS REQUESTED; B) THE PROTECTION OF NATIONAL OR PUBLIC INTERESTS; C) FORCE MAJEURE; D) YOURSELF OR THE THIRD PARTY, INCLUDING WITHOUT LIMITATION, USING ANY THIRD PARTY'S PRODUCTS, SOFTWARE, APPLICATIONS, AND AMONG OTHERS.

REGARDING TO THE PRODUCT WITH INTERNET ACCESS, THE USE OF PRODUCT SHALL BE WHOLLY AT YOUR OWN RISKS. HIKVISION SHALL NOT TAKE ANY RESPONSIBILITIES FOR ABNORMAL OPERATION, PRIVACY LEAKAGE, OR OTHER DAMAGES RESULTING FROM CYBER ATTACK, HACKER ATTACK, VIRUS INSPECTION, OR OTHER INTERNET SECURITY RISKS; HOWEVER, HIKVISION WILL PROVIDE TIMELY TECHNICAL SUPPORT IF REQUIRED.

SURVEILLANCE LAWS AND DATA PROTECTION LAWS VARY BY JURISDICTION. PLEASE CHECK ALL RELEVANT LAWS IN YOUR JURISDICTION BEFORE USING THIS PRODUCT IN ORDER TO ENSURE THAT YOUR USE CONFORMS TO THE APPLICABLE LAW. HIKVISION SHALL NOT BE LIABLE IN THE EVENT THAT THIS PRODUCT IS USED WITH ILLEGITIMATE PURPOSES.

IN THE EVENT OF ANY CONFLICTS BETWEEN THE ABOVE AND THE APPLICABLE LAW, THE LATTER PREVAILS.

Regulatory Information
FCC Compliance Statement
FCC Information

Please take attention that changes or modification not expressly approved by the party responsible for compliance could void the user's authority to operate the equipment.

FCC Compliance: This equipment has been tested and found to comply with the limits for a Class B digital device, pursuant to part 15 of the FCC Rules. These limits are designed to provide reasonable protection against harmful interference in a residential installation. This equipment generates, uses and can radiate radio frequency energy and, if not installed and used in accordance with the instructions, may cause harmful interference to radio communications. However, there is no guarantee that interference will not occur in a particular installation. If this equipment does cause harmful interference to radio or television reception, which can be determined by turning the equipment off and on, the user is encouraged to try to correct the interference by one or more of the following measures:

- Reorient or relocate the receiving antenna.
- Increase the separation between the equipment and receiver.
- Connect the equipment into an outlet on a circuit different from that to which the receiver is connected.
- Consult the dealer or an experienced radio/TV technician for help.

This equipment should be installed and operated with a minimum distance of 20 cm between the radiator and your body.

FCC Conditions

This device complies with part 15 of the FCC Rules. Operation is subject to the following two conditions:

- (1) This device may not cause harmful interference.
- (2) This device must accept any interference received, including interference that may cause undesired operation.

Industry Canada ICES-003 Compliance

This device meets the CAN ICES-3 (B)/NMB-3(B) standards requirements.

This device complies with Industry Canada licence-exempt RSS standard(s). Operation is subject to the following two conditions:

- (1) This device may not cause interference, and
- (2) This device must accept any interference, including interference that may cause undesired operation of the device.

Under Industry Canada regulations, this radio transmitter may only operate using an antenna of a type and maximum (or lesser) gain approved for the transmitter by Industry Canada. To reduce potential radio interference to other users, the antenna type and its gain should be so chosen that the equivalent isotropically radiated power (e.i.r.p.) is not more than that necessary for successful communication.

Le présent appareil est conforme aux CNR d'Industrie Canada applicables aux appareils radioexempts de licence. L'exploitation est autorisée aux deux conditions suivantes :

- (1) l'appareil ne doit pas produire de brouillage, et
- (2) l'utilisateur de l'appareil doit accepter tout brouillage radioélectrique subi, même si le brouillage est susceptible d'en compromettre le fonctionnement.

Conformément à la réglementation d'Industrie Canada, le présent émetteur radio peut fonctionner avec une antenne d'un type et d'un gain maximal (ou inférieur) approuvé pour l'émetteur par Industrie Canada. Dans le but de réduire les risques de brouillage radioélectrique à l'intention des autres utilisateurs, il faut choisir le type d'antenne et son gain de sorte que la puissance isotrope rayonnée équivalente (p.i.r.e.) ne dépasse pas l'intensité nécessaire à l'établissement d'une communication satisfaisante.

This equipment should be installed and operated with a minimum distance 20cm between the radiator and your body.

Cet équipement doit être installé et utilisé à une distance minimale de 20 cm entre le radiateur et votre corps.

(i) the device for operation in the band 5150-5250 MHz is only for indoor use to reduce the potential for harmful interference to co-channel mobile satellite systems;

(ii) the maximum antenna gain permitted for devices in the bands 5470-5725 MHz shall comply with the e.i.r.p. limit; and

(iii) the maximum antenna gain permitted for devices in the band 5725-5825 MHz shall comply with the e.i.r.p. limits specified for point-to-point and non point-to-point operation as appropriate.

(i) Les dispositifs fonctionnant dans la bande 5150-5250 MHz sont réservés uniquement pour une utilisation à l'intérieur afin de réduire les risques de brouillage préjudiciable aux systèmes de satellites mobiles utilisant les mêmes canaux.

(ii) le gain d'antenne maximal autorisé pour les appareils dans les bandes 5470-5725 MHz doivent respecter le pire limiter; et

(iii) le gain d'antenne maximal autorisé pour les appareils dans la bande 5725-5825 MHz doivent respecter le pire limites spécifiées pour le point-à-point et l'exploitation non point à point, le cas échéant.

The power supply must conform to LPS. The recommended adaptor models and manufacturers are shown on the right. Use the attached adapter, and do not change the adaptor randomly.	Model	Manufacturer
	MKAC-57-242500M,	MACABLE
	MKAC-57-242200M,	
	MKAC-57-241500M	

Safety Instruction

CAUTIONS: RISK OF EXPLOSION IF BATTERY IS REPLACED BY AN INCORRECT TYPE. DISPOSE OF USED BATTERIES ACCORDING TO THE INSTRUCTIONS. BATTERY IS NOT USER REPLACEABLE.

Please read the manual before using the device.

Key Safety Tips for Transformer:

- Inspect your transformer thoroughly to prevent or minimize breakdowns. Before installation, monitor your transformer by checking for any burnt odor, damaged power cord or connectors, or any parts that are improperly installed.
- Keep the power off when working on the transformer. Make sure there is zero electrical leakage or continuity between the current source and the system.
- Learn the maximum voltage requirements of your transformer. Be careful of system overload from a single transformer, with the understanding that multiple transformers help balance the impedance of each load.
- Keep spare nuts, bolts, and other objects away from your work, so that they don't touch or fall into the transformer.
- Be certain that your transformer is grounded, which will prevent static electricity and protect the coils from contacting the enclosure or core.
- Always keep your transformer and all of its components dry and free from any kind of moisture or water. To protect unskilled onlookers, set up caution signs that warn people to keep away from danger.

Due to the product shape and dimensions, the name and address of the importer/manufacturer are printed on the package.

Customer Service: For more information, please visit <https://us.hikvision.com/en>.

Need help? Please visit "<https://us.hikvision.com/en>" for our local contact details.

Quick Setup

Get the Hik-Connect App

Power Kit Installation

Doorbell Installation

Doorbell Setup

Box Contents

Doorbell (x1)



Mounting Plate (x2)
Pick the one for best surveillance angle.



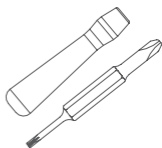
Plate Foam (x1)
Stabilize the mounting plate when installing it on the rough surface.



Power Kit (x1)



Drill Bit (x1)



Screwdriver (x1)



Mounting Screw (x3)



Anchor (x3)



Wire Connector (x4)



Security Screw (x1)



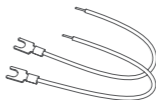
Fixing Screw (x2)



Wire Harness (x1)

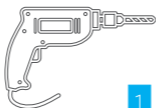


Fuse Wire (x1)



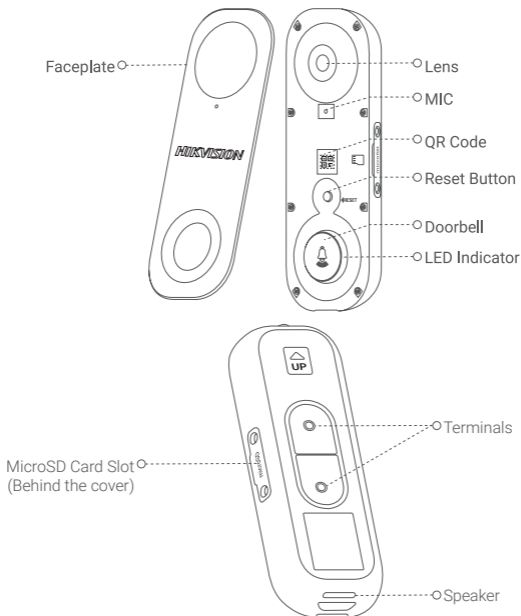
U-shaped Wire (x2)

Tools You May Need



Drill (x1)

Basics



Name	Description
LED Indicator	Red <ul style="list-style-type: none">• Solid Red: Doorbell is starting up.• Fast-flashing Red: Doorbell exception (e.g. MicroSD card error). Blue <ul style="list-style-type: none">• Solid Blue: Doorbell is functioning properly.• Fast-flashing Blue: Doorbell is ready for Wi-Fi connection.
MicroSD Card (sold separately)	Initialize the card in the Hik-Connect app before using it.
Reset Button	Hold for 5 secs to reset and enter Wi-Fi configuration mode.

Get the Hik-Connect App

Add to the Hik-Connect app:

1. Connect your mobile phone to Wi-Fi.
2. Download and install the Hik-Connect app by scanning the QR code to the right.
3. Open the Hik-Connect app and register a user account following the start-up wizard, and log in.

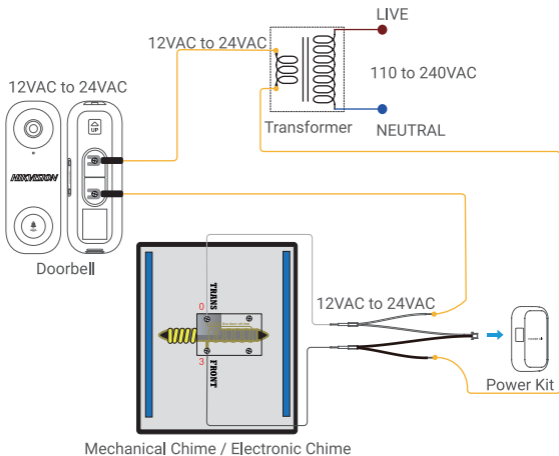


Hik-Connect
for users

Wiring Overview

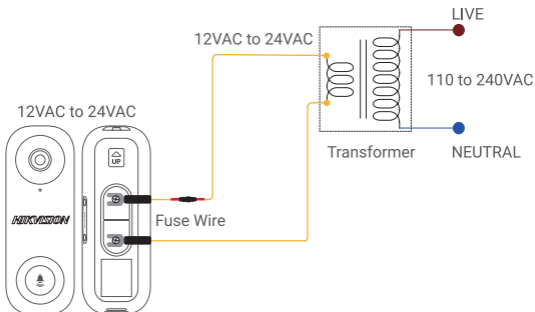
Hikvision doorbell with chime

- i** If you have a mechanical chime or electronic chime installed in your home, install the power kit and doorbell, and connect the wires as shown in the figure below.



Hikvision doorbell with no chime

- i** If no chime is installed, skip power kit installation, install the doorbell, and connect the wires as shown in the figure below.

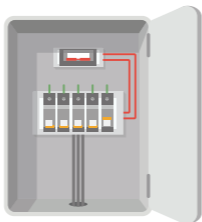


- i** We recommend installing a new transformer to bring the output 12 to 24 volts.
- Please refer to Quick Start Guide of your chime or transformer for the chime or transformer installing details.

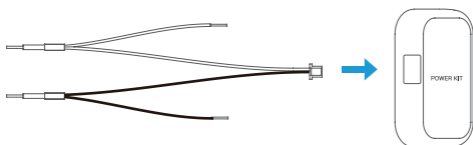
Power Kit Installation

i The power kit ensures that your doorbell gets the power it needs, so be sure to install it before you install your Doorbell.

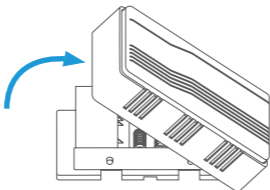
1 Shut off the electricity at the breaker that controls doorbell's circuit.



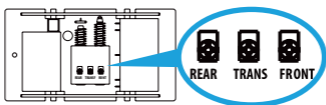
2 Insert one end of the wire harness into the power kit.



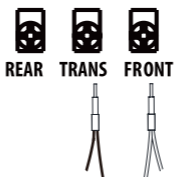
3 Remove the cover from your mechanical chime.



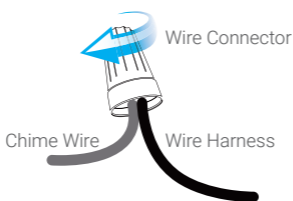
4 Remove the existing chime wires in the terminals named TRANS and FRONT.



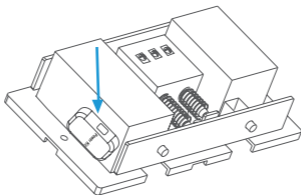
- 5 Connect the wire harness to the chime's terminals named TRANS and FRONT.



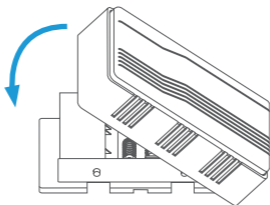
- 6 Insert the existing chime wire and the other end of the wire harness into the wire connector and twist it tightly. Repeat this step with the other chime wire.



- 7 Mount the power kit to the side of the chime.



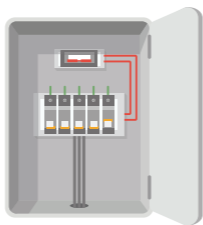
- 8 Replace the chime cover.



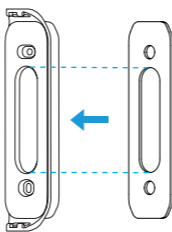
Doorbell Installation

i Recommended Installation Height: 1.2 m (4 ft) above the ground.

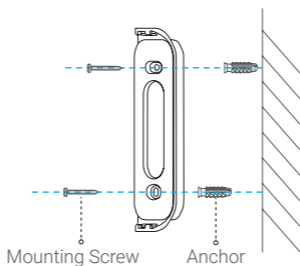
1 Shut off the electricity at the breaker that controls doorbell's circuit.



2 (Optional) If the wall is uneven, paste the plate foam to the mounting plate.



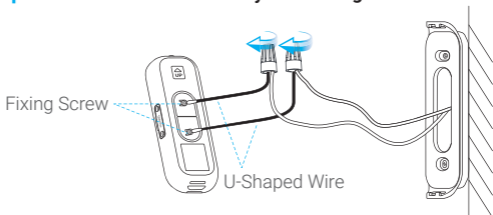
3 Using your mounting plate as a template, mark the location of the two mounting holes on your wall, and insert anchors, then fix the mounting plate to the wall.



i Recommended Hole Depth: 25 mm to 30 mm (1 inch to 1.2 inch).

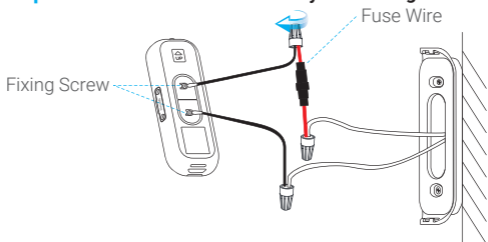
- 4 If you have a chime installed, follow **Option A**;
If not, follow **Option B**.

Option A Connect doorbell to your existing doorbell wires.



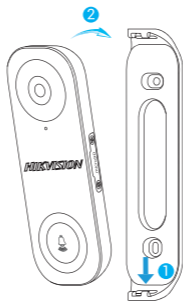
Power Supply: 12 to 24 VAC

Option B Connect the fuse wire to your existing doorbell wire.



Power Supply: 12 to 24 VAC

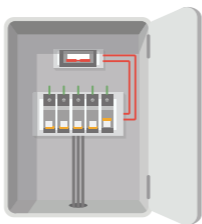
- 5 Install the doorbell to the mounting plate.



- 6 Insert the security screw into the top of the mounting plate to secure the doorbell.



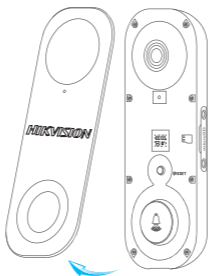
- 7 Restore the electricity at the breaker.



- i** Doorbell is powered on when its indicator flashes blue quickly. If not, make sure your electricity is off and check the wiring. If yes, proceed to doorbell setup.

Doorbell Setup

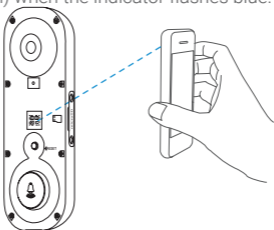
- 1 Add your doorbell to the Hik-Connect app.
1. Remove the faceplate of the doorbell.



2. Log in to your Hik-Connect account.
3. On the Home screen, tap "+" on the upper-right corner to go to the Scan QR Code interface.



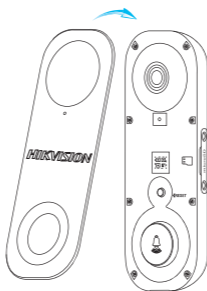
4. Scan the QR code on the device (or on the front cover of this manual) when the indicator flashes blue.



5. Follow the wizard to add the doorbell to the Hik-Connect app.

- i** If you want to change the Wi-Fi that your doorbell has connected to, press and hold the reset button for 5s and repeat this part.

6. Put the faceplate back.

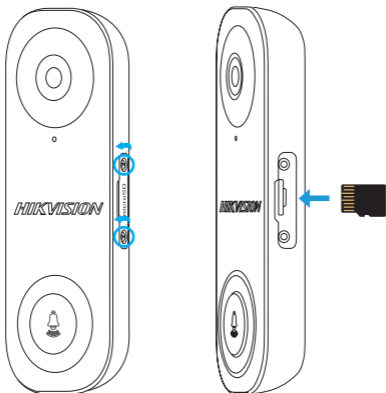


2 Choose the corresponding chime type.

1. In the Hik-Connect app, tap the **Chime Type** in the Device Settings interface to go to the Chime Type interface.
2. Choose the chime type that you have installed in your home.

Install the MicroSD Card (Optional)


1. Remove the cover on the side of the doorbell with the screwdriver.
2. Insert a microSD card (sold separately) into the slot until there is a click.
3. Place the cover back on, and tighten the screws with the screwdriver.



- i** After installing the microSD card, you should initialize the card in the Hik-Connect app before using it.

Initialize MicroSD Card

1. In the Hik-Connect app, tap the **Storage Status** in the Device Settings interface to check the microSD card status.

Wi-Fi Configure	TEST-WiFi  >
Storage Status	>
Device Version	Vx.x.x build xxxxxx No new version.

2. If the card status displays as **Uninitialized**, tap to initialize it.
3. The status will then change to **Normal** and it can store videos.

Troubleshooting

1 I have installed my doorbell, but the chime in my home doesn't function.

Please confirm the following details.

1. Make sure the right input voltage range (12V to 24V) has been used. Your doorbell is designed to work with at least 12 volts of AC power, which is in line with a majority of standard doorbell systems. Doorbell running at a lower voltage (or running on DC rather than AC) may cause chime malfunction.
2. Select the right chime type (same as the product label) in the Hik-Connect app.
3. Make sure the chime model used in your home is compatible with the doorbell. Please check the compatibility list on <https://us.hikvision.com/en>.
4. Power on the doorbell and wait for 10 minutes to 3 hours, and then try again.

2 I have failed to connect my doorbell to Wi-Fi.

1. Make sure your doorbell is not blocked by firewall or any limitation in your network.
2. Do not connect too many devices to the router.
3. Make sure the static IP setting is disabled and the router can distribute IP address to your device (DHCP is on).

3 My doorbell is offline frequently.

1. Make sure the doorbell has a strong and stable Wi-Fi signal.
2. Make sure your router and the Internet is functional.
3. The doorbell requires at least 2 Mbps uploading speed, please make sure the bandwidth of the network is sufficient, and do not have too many devices connected to the router.
4. If all the troubleshooting techniques listed above do not resolve the problem, please delete the device from your Hik-Connect account, reset, and re-add.

LIMITED WARRANTY

Thank you for purchasing Hikvision products. This limited warranty ("warranty") gives you, the original purchaser of the Hikvision product, specific legal rights. You may also have other legal rights that vary by state, province or jurisdiction. This warranty applies only to the original purchaser of the product. "Original purchaser" means any consumer having purchased the Hikvision product from an authorized seller. The disclaimers, exclusions, and limitations of liability under this warranty will not apply to the extent prohibited by applicable law. No distributor, reseller, agent, or employee is authorized to make any modification, extension, or addition to this warranty.

Your Hikvision product is warranted for a period of one (1) year from the date of purchase against defects in materials and workmanship, or such longer period as may be required by law in the country or state where this product is sold, when used normally in accordance with user manual. You can request warranty service by contacting our Customer Service.

For any defective Hikvision products under warranty, Hikvision will, at its option, (i) repair or replace your product free of charge; (ii) exchange your product with a functional equivalent product; or (iii) refund the original purchase price, provided you provide the original purchase receipt or copy, a brief explanation of the defect, and return the product in its original packaging. At Hikvision's sole discretion, repair or replacement may be made with a new or refurbished product or components. This warranty does not cover the shipping cost, insurance, or any other incidental charges incurred by you in returning the product.

Except where prohibited by applicable law, this is your sole and exclusive remedy for breach of this warranty. Any product that has either been repaired or replaced under this warranty will be covered by the terms of this warranty for the longer of ninety (90) days from the date of delivery or the remaining original warranty period.

This warranty does not apply and is void:

- If the warranty claim is made outside the warranty period or if the proof of purchase is not provided;
- For any malfunction, defect, or failure caused by or resulting from the evidence of impact; mishandling; tampering; use contrary to the applicable instruction manual; incorrect power line voltage; accident; loss; theft; fire; flood; or other Acts of God; shipping damage; or damage resulting from repairs performed by unauthorized personnel;
- For any consumable parts, such as batteries, where the malfunction is due to the normal aging of the product;
- Cosmetic damage, including but not limited to scratches, dents, and broken plastic on ports;
- Any software, even if packaged or sold with Hikvision hardware;
- For any other damages free from defects in material or workmanship;
- Routine cleaning, normal cosmetic, and mechanical wear and tear.

DISCLAIMER OF WARRANTIES

EXCEPT AS STATED ABOVE IN THIS WARRANTY, AND TO THE MAXIMUM EXTENT PERMITTED BY APPLICABLE LAW, HIKVISION DISCLAIMS ALL EXPRESS, IMPLIED, AND STATUTORY WARRANTIES AND CONDITIONS WITH RESPECT TO THE PRODUCT, INCLUDING THE IMPLIED WARRANTIES OF MERCHANTABILITY AND FITNESS FOR A PARTICULAR PURPOSE, THE DURATION OF ANY APPLICABLE IMPLIED WARRANTIES OR CONDITIONS TO THE DURATION OF THIS WARRANTY, THE SECURITY OF THE PRODUCT, OR AVAILABILITY AND RELIABILITY OF PRODUCT INFORMATION OR DATA.

NOTE: SOME STATES OR JURISDICTIONS DO NOT ALLOW LIMITATIONS ON HOW LONG AN IMPLIED WARRANTY LASTS, SO THE ABOVE LIMITATION MAY NOT APPLY TO YOU.

LIMITATION OF DAMAGES

IN NO EVENT WILL HIKVISION BE LIABLE FOR ANY CONSEQUENTIAL, INCIDENTAL, EXEMPLARY, OR SPECIAL DAMAGES, INCLUDING ANY DAMAGES FOR LOST DATA OR LOST PROFITS, ARISING FROM OR RELATING TO THIS WARRANTY OR THE PRODUCT, AND HIKVISION'S TOTAL CUMULATIVE LIABILITY ARISING FROM OR RELATED TO THIS WARRANTY OR THE PRODUCT WILL NOT EXCEED THE AMOUNT ACTUALLY PAID FOR THE PRODUCT BY THE ORIGINAL PURCHASER.

NOTE: SOME STATES OR JURISDICTIONS DO NOT ALLOW THE EXCLUSION OR LIMITATION OF INCIDENTAL OR CONSEQUENTIAL DAMAGES, SO THE ABOVE LIMITATION OR EXCLUSION MAY NOT APPLY TO YOU.

LIMITATION OF LIABILITY

ALL PRODUCT INFORMATION AND DATA IS PROVIDED FOR YOUR CONVENIENCE, "AS IS," AND "AS AVAILABLE." HIKVISION DOES NOT REPRESENT, WARRANT, OR GUARANTEE THAT PRODUCT INFORMATION AND DATA WILL BE AVAILABLE, ACCURATE, OR RELIABLE OR THAT PRODUCT INFORMATION AND DATA OR USE OF THE PRODUCT WILL PROVIDE SAFETY IN YOUR HOME. YOU USE ALL PRODUCT INFORMATION, DATA, AND THE PRODUCT AT YOUR OWN DISCRETION AND RISK. YOU WILL BE SOLELY RESPONSIBLE FOR (AND HIKVISION DISCLAIMS) ANY AND ALL LOSS, LIABILITY, OR DAMAGES, INCLUDING TO YOUR WIRING, FIXTURES, ELECTRICITY, HOME, PRODUCT, PRODUCT PERIPHERALS, COMPUTER, MOBILE DEVICE, AND ALL OTHER ITEMS AND PETS, RESULTING FROM YOUR USE OF THE PRODUCT INFORMATION, DATA, OR PRODUCT. PRODUCT INFORMATION AND DATA PROVIDED BY HIKVISION IS NOT INTENDED AS A SUBSTITUTE FOR DIRECT MEANS OF OBTAINING THE INFORMATION. FOR EXAMPLE, A NOTIFICATION PROVIDED THROUGH THE PRODUCT IS NOT INTENDED AS A SUBSTITUTE FOR AUDIBLE AND VISIBLE INDICATIONS IN THE HOME AND ON THE PRODUCT, NOR FOR A THIRD PARTY MONITORING SERVICE.

Please do not hesitate to contact your seller or our Customer Service, with any questions.

HIKVISION[®]