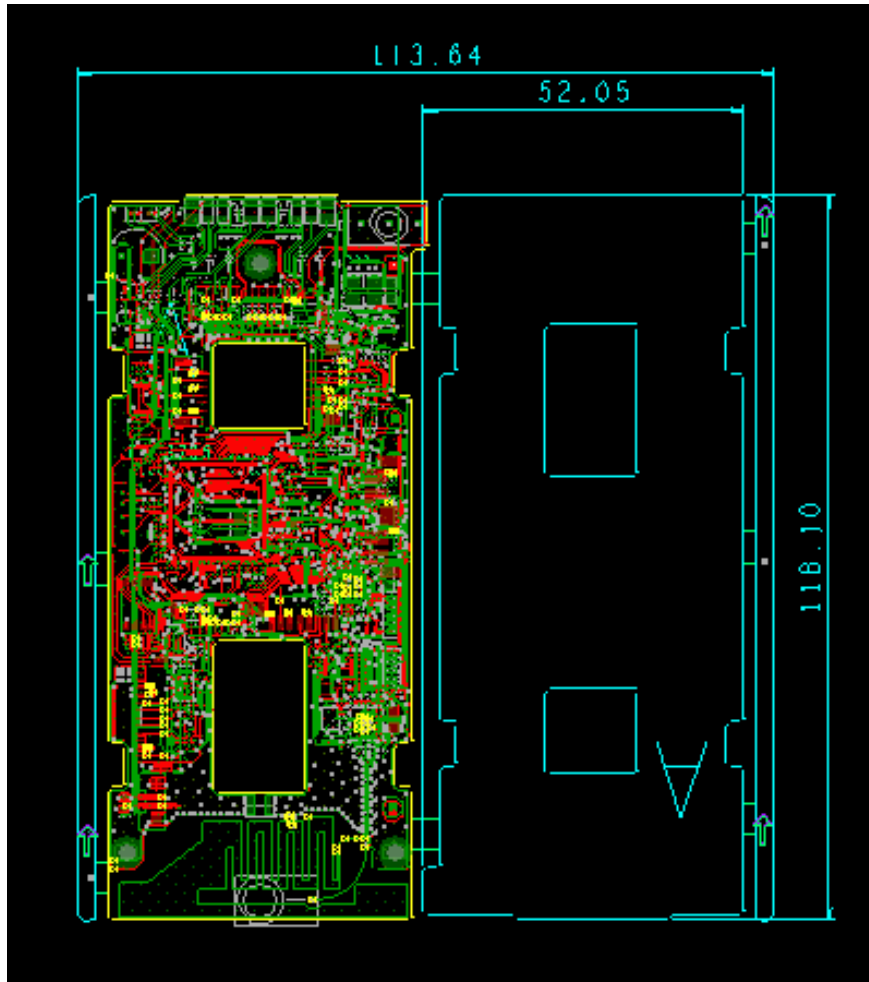


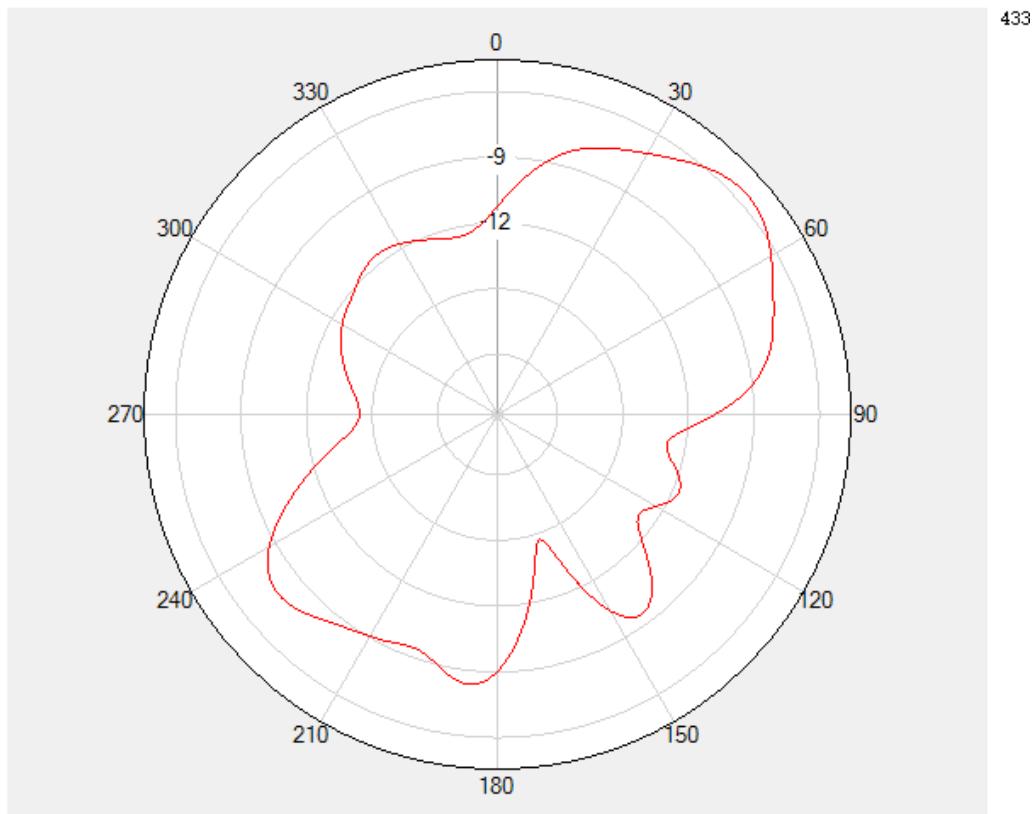
Antenna Specifications

Design Specifications	Typical
Antenna Type*	PCB
Working Frequency	434.6 MHz
Antenna Gain	-3.94dbi
Antenna Efficiency	$\geq 20\%$
VSWR	≤ 1.6
Impedance	50 ohm
Overall Dimensions*	118.1mm*52.05mm

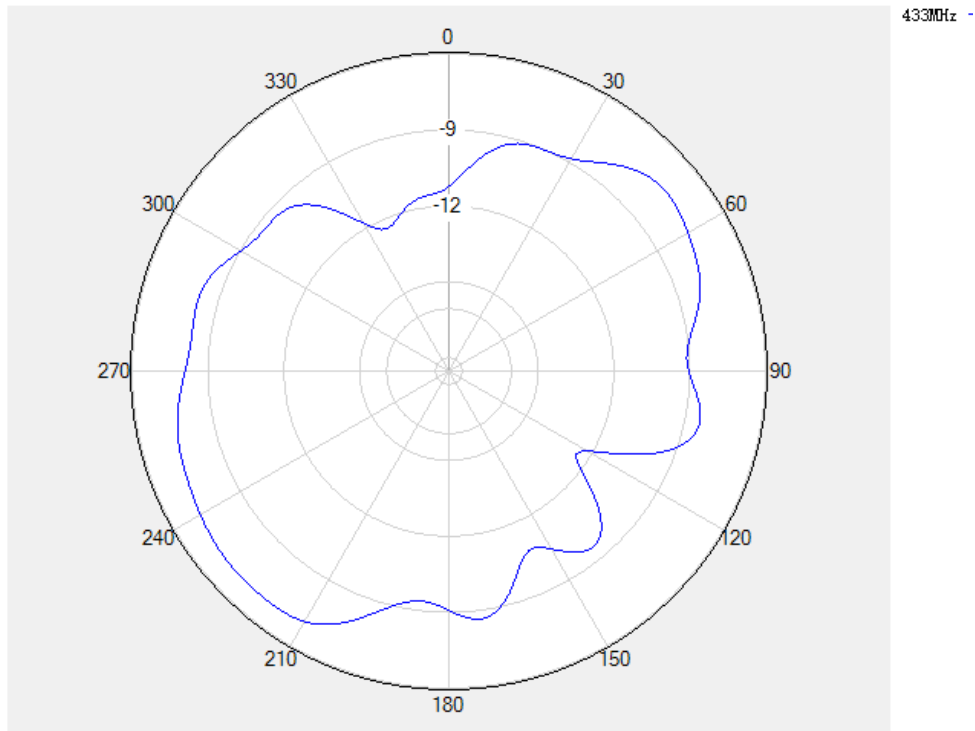


2D 方向图

cut phi 0 180 type Etot mag XY/AF SaveWave Cartesian



cut phi 90 180 type Etot mag XY/AF SaveWave Cartesian



cut theta 90 180 type Etot mag ☐ XY/AF SaveWave ☐ Cartesian

