

English

1 APPEARANCE

1. Magnetic Stick 2. Sensor 3. Battery 4. Power Switch 5. Tamper Button
6. Indicator 7. External Input 8. Rear Tamper Sheet 9. Positioning Mark

2 INSTALLMENT

3 TEST

Check if the installation position is properly.
Magnet Detection Performance Table

Supports Direction	Non-metallic Surface	
	Break(Remove)	Make(Approach)
Y	51	45
X+	20	19
X-	23	22
Z	76	68

4 INSTALLATION

- I. Check signal strength.
II. Install the detector. ★ Screw for real panel tamper-proof
III(Optional)route the input cable through cable hole if external inputs are required.

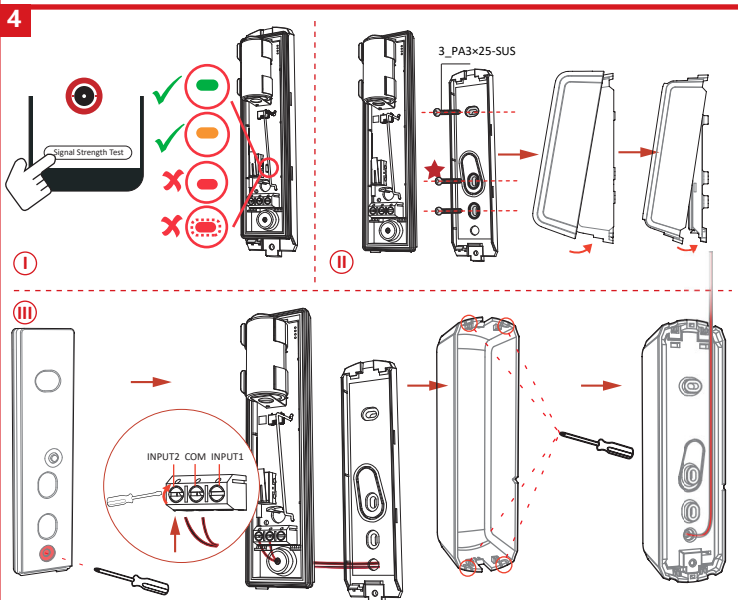
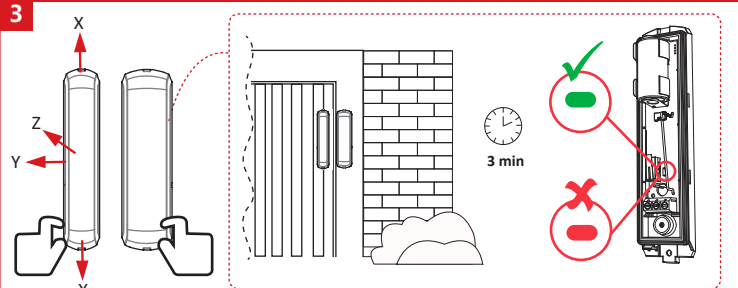
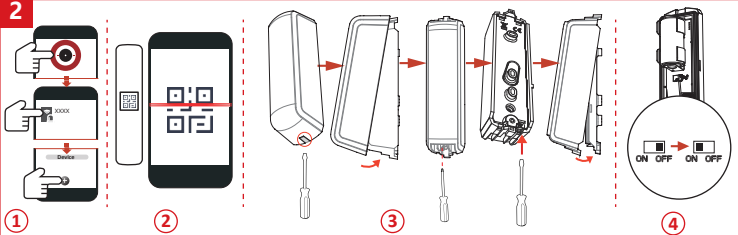
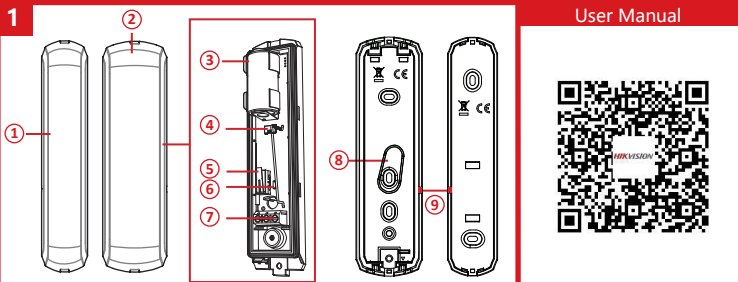
User Manual

Scan the QR code for more information and operation help.

Specification

Detection Gap	According to the magnet detection performance table
Tamper Protection	Front,Rear
Alarm Input	Z
LED Indicator	Blue(Alarm)
Transmission Frequency	915MHz
Transmission Range	1600m (open area)
Battery Type	CR123A x1
Standard Battery Life	5 Years
Operation Temperature	-20 °C to 60 °C(-4 °F to 140 °F)
Storage Temperature	-30 °C to 65 °C (-22 °F to 149 °F)
Operation Humidity	10% to 90%
Dimension(WxHxD)	Sensor: 40.5 mm × 146 mm × 40.9 mm Magnetic Stick: 30.5mm × 146mm × 40.9 mm
Weight	247 g
Application Scenario	Outdoor, IP66

UD25445B



User Manual



©2021 Hangzhou Hikvision Digital Technology Co., Ltd. All rights reserved.
This Manual includes instructions for using and managing the Product. Pictures, charts, images and all other information hereafter are for description and explanation only. The information contained in this Manual is subject to change without notice. Ask for firmware updates or other reasons. Please find the latest version of this Manual at the Hikvision website.
Please refer to the user manual of the equipment you are using for more information.
Please use this Manual with the guidance and assistance of professionals trained in supporting the Product.
HIKVISION and other Hikvision's trademarks and signs on the properties of Hikvision in various jurisdictions. Other trademarks and signs mentioned are the properties of their respective owners.
TO THE MAXIMUM EXTENT PERMITTED BY APPLICABLE LAW, THIS MANUAL AND THE PRODUCT DESCRIBED WITH ITS HARDWARE, SOFTWARE AND FIRMWARE, ARE PROVIDED "AS IS" AND WITHOUT WARRANTY AND WITHOUT LIABILITY, EXPRESS OR IMPLIED, INCLUDING WITHOUT LIMITATION, ANY WARRANTY, MERCHANTABILITY, ADEQUACY, QUANTITY OR FITNESS FOR A PARTICULAR PURPOSE. THE USER SHALL BE RESPONSIBLE FOR THE PROPER USE OF THE PRODUCT. THE USER SHALL BE RESPONSIBLE FOR ANY DAMAGE TO THE PRODUCT OR TO OTHER EQUIPMENT, INCLUDING, WITHOUT LIMITATION, DAMAGES FOR LOSS OF BUSINESS PROFITS, BUSINESS INTERRUPTION, OR LOSS OF DATA, CORRUPTION OF DATA, OR LOSS OF DOCUMENTATION, WHETHER BASED ON BREACH OF CONTRACT, TORT (INCLUDING NEGLIGENCE), PRODUCT LIABILITY OR OTHERWISE, IN CONNECTION WITH THE USE OF THE PRODUCT. EVEN IF REVISION HAS BEEN ADVISED OF THE POSSIBILITY OF SUCH DAMAGES OR LOSS.
YOU AGREE TO HOLD THE PRODUCER HARMLESS FOR INHERENT SECURITY RISKS, AND HIKVISION SHALL NOT TAKE ANY RESPONSIBILITIES FOR ABNORMAL OPERATION, PRODUCT DAMAGE OR OTHER DAMAGES INCURRED BY THE USER. HIKVISION SHALL NOT BE RESPONSIBLE FOR INHERENT SECURITY RISKS, HOWEVER, HIKVISION WILL PROVIDE THE TECHNICAL SUPPORT IF REQUIRED.
YOU AGREE TO USE THIS PRODUCT IN COMPLIANCE WITH ALL APPLICABLE LAWS, AND YOU ARE SOLELY RESPONSIBLE FOR PRESERVING THAT YOUR USE COMPHIES WITH THE APPLICABLE LAW. ESPECIALLY, YOU ARE RESPONSIBLE FOR USING THIS PRODUCT IN A MANNER THAT DOES NOT INFRINGE ON THE RIGHTS OF THIRD PARTIES, INCLUDING WITHOUT LIMITATION, RIGHTS OF PATENTS, INTELLECTUAL PROPERTY RIGHTS, OR DATA PROTECTION AND OTHER PRIVACY RIGHTS. YOU SHALL NOT USE THIS PRODUCT FOR ANY PROHIBITED PURPOSES, INCLUDING THE DEVELOPMENT OR PRODUCTION OF WEAPONS OF MASS DESTRUCTION, THE DEVELOPMENT OR PRODUCTION OF CHEMICAL OR BIOLOGICAL WEAPONS, ANY ACTIVITIES IN THE CONTEXT OF THE ARMS CONTROL TREATY NEGOTIATIONS, OR THE PRODUCTION OF NUCLEAR WEAPONS.
This product and, if applicable, the supplied accessories has are marked with "CE" and comply therewith with the applicable harmonized European standards listed under the CE Directive 2014/53/EU (FCC ETR) and the EMC Directive 2014/53/EU (EMC ETR).
2012/21/19 (RoHS directive): products marked with this symbol cannot be disposed of as unsorted municipal waste in the European Union. For proper recycling, return this product to your retailer/supplier upon the purchase of additional new equipment, or dispose of it at designated collection points. For more information see: www.ecycle.eu and 2006/66/EC (battery directive). This product contains a battery that can be disposed of as unsorted municipal waste in the European Union. See the product documentation for specific battery information. This battery is marked with this symbol, which may include markings to indicate customer (CS), lead (Pb) or mercury (Hg). For proper recycling, return the battery to your supplier or to a designated collection point. For more information see: www.ecycle.eu and www.reyclethis.eu.
BATTERY CAUTION
⚠️ Misplacement of a battery with an incorrect type that can defeat a safeguard (for example, in the case of some lithium battery types):
• disposal of a battery into fire or a hot oven, or mechanically crushing or cutting of a battery, that can result in an explosion;
• leaving a battery in an extremely high temperature surrounding environment that can result in an explosion or the leakage of flammable liquid or gas;
• a battery subjected to extremely low air pressure that may result in an explosion or the leakage of flammable liquid or gas.
Chemical burning danger.
Do not swallow the battery.
Keep the battery and battery pack away from the children.
If you are the battery might have swallowed or passed inside any part of the body, seek immediate medical attention.
Risk of explosion if battery is replaced by an incorrect type.
Replacement of battery with an incorrect type that can defeat a safeguard.
Dispose of used batteries according to the instructions and local regulation.
If the battery compartment door not close accurately, stop using the product and keep it away from children.
• identifies the positive terminal(s) of equipment which is used with, or generates direct current.
• identifies the negative terminal(s) of equipment which is used with, or generates direct current.
INSTALLATION CAUTION
⚠️ The additional force shall be equal to three times the weight of the equipment but not less than 50N. The equipment and its associated mounting means shall remain secure during the installation. After the installation, the equipment, including any associated mounting plate, shall not be damaged.



FCC Information
Please take attention that changes or modification not expressly approved by the party responsible for compliance could void the user's authority to operate the equipment.
FCC compliance: This equipment has been tested and found to comply with the limits for a Class B digital device, pursuant to part 15 of the FCC Rules. These limits are designed to provide reasonable protection against harmful interference in a residential installation. This equipment generates, uses and can radiate radio frequency energy and, if not installed and used in accordance with the instructions, may cause harmful interference to radio communications. However, there is no guarantee that interference will not occur in a particular installation. If this equipment does cause harmful interference to radio or television reception, which can be determined by turning the equipment off and on, the user is encouraged to try to correct the interference by one or more of the following measures:
—Reorient or relocate the receiving antenna.
—Increase the separation between the equipment and receiver.
—Connect the equipment into an outlet on a circuit different from that to which the receiver is connected.
—Consult the dealer or an experienced radio/TV technician for help.
This equipment should be installed and operated with a minimum distance 20cm between the radiator and your body.
FCC Conditions
This device complies with part 15 of the FCC Rules. Operation is subject to the following two conditions:
1. This device may not cause harmful interference.
2. This device must accept any interference received, including interference that may cause undesired operation