

HIKVISION
DS-PDWL-E-WB
Wireless Water Leak Detector
Quick Start Guide

English

1 APPEARANCE
1. Indicator 2. Tamper Button 3. Probe 4. Learnt button

2 ENROLLMENT

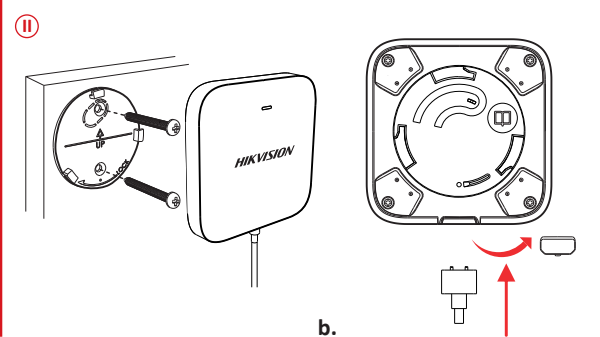
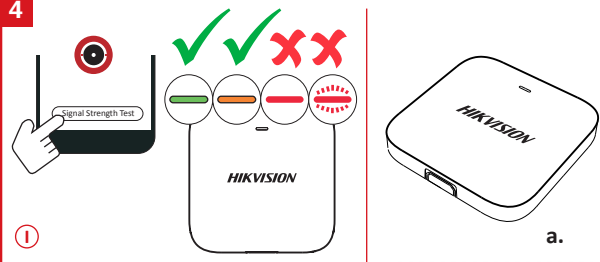
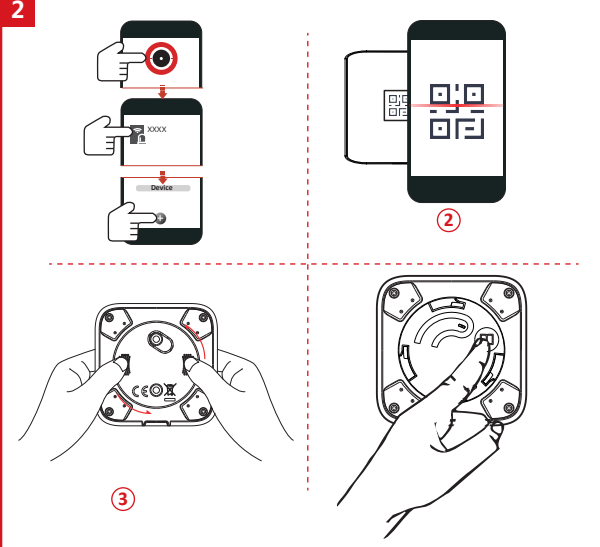
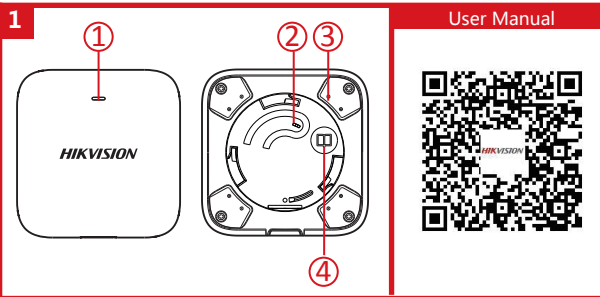
3 TEST
BG (Break Glass) Test

4 INSTALLATION
I. Check signal strength.
II. Install the detector.
a. Stand mounting
b. Wall mounting

User Manual
Scan the QR code for more information and operation help.

Specification

Installation	Wall mount/Direct touch
Tamper protection	Front & Back
LED indicator	Blue (alarm)
Operating temperature	-10 °C to 55 °C (14 °F to 131 °F) -10 °C to 40 °C (14 °F to 104 °F) Certified
Storage temperature	-20 °C to 60 °C (-4 °F to 140 °F)
Operating humidity	10% to 90%
Water protection	IP66
Dimension(H × W × D)	62.4 mm × 62.4 mm × 14.6 mm
Transmission frequency	433.10MHz
RF range	0.8km (free space)
Battery	CR2450 × 1 (included)
Standard battery life	3 years



©2020 Hangzhou Hikvision Digital Technology Co., Ltd. All rights reserved.
About the Manual
This Manual includes instructions for using and managing the Product. Pictures, charts, images and all other information herein are for informational and explanatory only. The information contained in this Manual is subject to change without notice, due to firmware updates or other reasons. Please find the latest version of this Manual at the Hikvision website <http://www.hikvision.com>.
Please refer to the Manual with the guidance and assistance of professionals trained in supporting the Product.
HIKVISION and other Hikvision's trademarks and logos are the properties of Hikvision in various jurisdictions. Other trademarks and logos mentioned are the properties of their respective owners.
Disclaimer
TO THE MAXIMUM EXTENT PERMITTED BY APPLICABLE LAW, THIS MANUAL AND THE PRODUCT DESCRIBED, WITH ITS PACKAGING, SOFTWARE AND HARDWARE, ARE PROVIDED "AS IS" AND "WITH ALL FAULTS" WITHOUT WARRANTY. HIKVISION MAKES NO WARRANTIES, EXPRESS OR IMPLIED, INCLUDING WITHOUT LIMITATION, MERCHANTABILITY, SATISFACTORY QUALITY, OR FITNESS FOR A PARTICULAR PURPOSE. THE USE OF THE PRODUCT IS AT YOUR OWN RISK. HIKVISION SHALL NOT BE LIABLE TO YOU FOR ANY SPECIAL, CONSEQUENTIAL, INCIDENTAL, OR INDIRECT DAMAGES, INCLUDING DAMAGES OF PROFITS, LOSS OF BUSINESS OR REVENUE, BUSINESS INTERRUPTION, LOSS OF DATA, CORRUPTION OF DATA, OR OTHER DAMAGES, OF ANY KIND, THAT MAY BE SUFFERED BY YOU OR ANY OTHER PARTY, IN CONNECTION WITH THE USE OF THE PRODUCT. HIKVISION DISCLAIMS THE LIABILITY OF THE PRODUCT FOR ANY SUCH DAMAGES, OF ANY KIND, THAT MAY BE SUFFERED BY YOU OR ANY OTHER PARTY. YOU ACKNOWLEDGE THAT THE NATURE OF INTERNET PRODUCTS OR INTERNET SECURITY TOOLS, AND HIKVISION SHALL NOT TAKE ANY RESPONSIBILITY FOR ANY DAMAGE, INJURY, LOSS, OR OTHER DAMAGES RESULTING FROM CYBER-ATTACK, HACKER ATTACK, VIRUS INFECTION, OR OTHER INTERNET SECURITY RISKS. HOWEVER, HIKVISION WILL PROVIDE BEST EFFORTS TO SUPPORT YOUR SECURITY WITH ALL APPLICABLE LAWS, AND YOU ARE SOLELY RESPONSIBLE FOR ENSURING YOUR SYSTEMS CONFORM TO THE APPLICABLE LAW. USUALLY YOU ARE RESPONSIBLE FOR USING THIS PRODUCT IN A MANNER THAT DOES NOT INFRINGE ON THE RIGHTS OF THIRD PARTIES, INCLUDING WITHOUT LIMITATION, RIGHTS OF PATENT, INTELLECTUAL PROPERTY RIGHTS, OR TRADEMARK AND OTHER SPANISH RIGHTS. HIKVISION SHALL NOT BE RESPONSIBLE FOR ANY DAMAGES, INCLUDING THE DEVELOPMENT OR PRODUCTION OF CHEMICAL OR BIOLOGICAL WEAPONS, ANY ACTIVITIES IN THE CONTEXT RELATED TO ANY NUCLEAR EXPLOSION OR NUCLEAR FUEL CYCLE, OR IN SUPPORT OF HUMAN RIGHTS ABUSE. IN THE EVENT OF ANY CONFLICTS BETWEEN THIS MANUAL AND THE APPLICABLE LAW, THE LATER PREVAILS.

CE
This product and - if applicable - the supplied accessories too are marked with "CE" and comply therefore with the applicable harmonized European standards listed under this CE directive 2014/53/EU, the EMC directive 2014/53/EU, the RoHS Directive 2011/65/EU.
This is a Class B product. Products marked with this symbol cannot be disposed of as unsorted municipal waste in the domestic area. For proper recycling, return this product to your local supplier upon the purchase of equivalent new equipment, or dispose of it at designated collection points. For more information see www.ecowatch.eu.
2006/66/EC (Battery Directive): This product contains a battery that cannot be disposed of as unsorted municipal waste in the domestic area. See the product documentation for specific battery information. The battery must not be disposed of with other waste. Please refer to the product documentation for more information. For proper recycling, return the battery to your supplier or to a designated collection point. For more information see www.ecowatch.eu.

BATTERY WARNING
1. Do not ingest battery. Chemical Burn Hazard
2. Keep new and used batteries away from the children.
3. If the battery compartment does not close securely, stop using the product and keep it away from children.
4. If more than three batteries might have been swallowed or placed inside any part of the body, seek immediate medical attention.

BATTERY CAUTION
1. Risk of fire or explosion if the battery is replaced by an incorrect type.
2. Improper replacement of the battery with an incorrect type may defeat a safeguard (for example, in the case of some lithium battery types) into fire or a hot oven, or electrically crash or cut the battery, which may result in an explosion.
3. Do not leave the battery in an extremely high temperature surrounding environment, which may result in an explosion.
4. Do not touch the battery to extremely low air pressure, which may result in an explosion or the leakage of flammable liquid or gas.
5. Dispose of used batteries according to the instructions.

INSTALLATION CAUTION
The additional force shall be equal to three times the weight of the equipment but not less than 50N. The equipment and its associated mounting shall remain stable after the installation. After the installation, the equipment, including any associated mounting gear, shall not be damaged.



Warning
This is a class B product. In a domestic environment this product may cause radio interference in which case the user may be required to take adequate measures.

FCC Information
Please take attention that changes or modification not expressly approved by the party responsible for compliance could void the user's authority to operate the equipment.
FCC compliance: This equipment has been tested and found to comply with the limits for a Class B digital device, pursuant to part 15 of the FCC Rules. These limits are designed to provide reasonable protection against harmful interference in a residential installation. This equipment generates, uses and can radiate radio frequency energy and, if not installed and used in accordance with the instructions, may cause harmful interference to radio communications. However, there is no guarantee that interference will not occur in a particular installation. If this equipment does cause harmful interference to radio or television reception, which can be determined by turning the equipment off and on, the user is encouraged to try to correct the interference by one or more of the following measures:
—Reorient or relocate the receiving antenna.
—Increase the separation between the equipment and receiver.
—Connect the equipment into an outlet on a circuit different from that to which the receiver is connected.
—Consult the dealer or an experienced radio/TV technician for help.
FCC Conditions
This device complies with part 15 of the FCC Rules. Operation is subject to the following two conditions:
1. This device may not cause harmful interference.
2. This device must accept any interference received, including interference that may cause undesired operation