

English

1 APPEARANCE

- Magnetic Stick
- Positioning line
- Indicator
- Tamper Button
- Power Switch
- Battery

2 ENROLLMENT

3 TEST

Check if the installation position is properly.
Magnet Detection Performance Table

Axes of Operation	Event	Without Nominal Distance Distance in Air	With Nominal Distance 5mm Distance in Air
X+	Remove	20	20
	Approach	23	26
X-	Remove	12	14
	Approach	16	20
Y	Remove	42	37
	Approach	35	30
Z+	Remove	50	48
	Approach	43	42
Z-	Remove	52	52
	Approach	46	46

4 INSTALLATION

- Check signal strength and align the positioning line.
- Install the detector.
 - with screw
 - with sponge tape

User Manual

Scan the QR code for more information and operation help.

Specification

Detection gap	According to the magnet detection performance table
Tamper protection	Front & Back
LED indicator	Blue (alarm)
Operating temperature	-10 °C to 55 °C (14 °F to 131 °F) -10 °C to 40 °C (14 °F to 104 °F) Certified
Storage temperature	-20 °C to 60 °C (-4 °F to 140 °F)
Operating humidity	10% to 90%
Dimension (W × H × D)	Sensor: 29mm × 69mm × 10mm Magnetic Stick: 14mm × 69mm × 10mm
Weight	38g
Transmission frequency	433.1MHz
RF range	1.2Km (open area)
Battery	CR2450 × 1 (included)
Standard battery life	3 years

©2020 Hangzhou Hikvision Digital Technology Co., Ltd. All rights reserved.

Please read this manual.

The Manual includes instructions for using and maintaining the product. Features, chart, images and all other information hereunder are for description and explanation only. The information contained in this Manual is subject to change without notice, due to firmware updates or other reasons. Please find the latest version of the Manual on the Hikvision website: www.hikvision.com

PLEASE CONTACT YOUR LOCAL SERVICE CENTER FOR THE LATEST VERSION OF THE MANUAL.

HIKVISION, HIKVISION LOGO and other Hikvision's trademarks and logos are the properties of Hikvision in various jurisdictions. Other trademarks and logos mentioned are the properties of their respective owners.

TO THE MAXIMUM EXTENT PERMITTED BY APPLICABLE LAW, THIS MANUAL AND THE PRODUCT DESCRIBED, WITH ITS HARDWARE, SOFTWARE AND FIRMWARE, ARE PROVIDED "AS IS" AND WITH ALL FAULTS AND DEFECTS. HIKVISION MAKES NO WARRANTIES, EXPRESS OR IMPLIED, INCLUDING BUT NOT LIMITED TO, WARRANTIES OF MERCHANTABILITY, FITNESS FOR A PARTICULAR PURPOSE, TITLE, OR NON-INFRINGEMENT. THE USER OF THIS PRODUCT BY BUYING OR USING IT, IN ANY MANNER, WILL BE DEEMED TO HAVE ACCEPTED THESE TERMS AND CONDITIONS. HIKVISION DISCLAIMS ANY LIABILITY, INCLUDING LIABILITY OF SYSTEMS, OR LOSS OF DISSEMINATION, WHETHER BASED ON BREACH OF CONTRACT, TORT (INCLUDING NEGLIGENCE), PRODUCT LIABILITY, OR OTHERWISE, IN CONNECTION WITH THE USE OF THE PRODUCT. EVEN IF HIKVISION HAS BEEN ADVISED OF THE POSSIBILITY OF SUCH DAMAGES OR LOSS.

THIS PRODUCT IS A SECURITY DEVICE. IT IS NOT TO BE USED FOR ANY OTHER PURPOSES. HIKVISION SHALL NOT BE RESPONSIBLE FOR ANY DAMAGES OR LOSS, INCLUDING BUT NOT LIMITED TO, DAMAGES OR LOSS OF PROFITS FROM CYBER-ATTACK, HACKER ATTACK, VIRUS INFECTION, OR OTHER INTERNET SECURITY RISKS. HOWEVER, HIKVISION WILL PROVIDE TECHNICAL SUPPORT AND SOFTWARE UPDATES WITHIN ITS REASONABLE CAPABILITY.

FOR YOUR PROTECTION, PLEASE READ THIS MANUAL CAREFULLY AND FOLLOW THE INSTRUCTIONS. YOU ARE SOLELY RESPONSIBLE FOR ENSURING THAT YOUR USE CONFORMS TO THE APPLICABLE LAW, ESPECIALLY YOU ARE RESPONSIBLE FOR USING THIS PRODUCT IN A MANNER THAT DOES NOT VIOLATE THE RIGHTS OF THIRD PARTIES, INCLUDING BUT NOT LIMITED TO, THE RIGHTS OF INTELLECTUAL PROPERTY. HIKVISION SHALL NOT BE RESPONSIBLE FOR ANY DAMAGES OR LOSS, INCLUDING BUT NOT LIMITED TO, DAMAGES OR LOSS OF PROFITS FROM CYBER-ATTACK, HACKER ATTACK, VIRUS INFECTION, OR OTHER INTERNET SECURITY RISKS. HOWEVER, HIKVISION WILL PROVIDE TECHNICAL SUPPORT AND SOFTWARE UPDATES WITHIN ITS REASONABLE CAPABILITY.

IN THE EVENT OF ANY CONFLICTS BETWEEN THIS MANUAL AND THE APPLICABLE LAW, THE LATTER PREVAILS.

CE This product and, if applicable, the supplied accessories are marked with "CE" and comply therefore with the applicable harmonized European standards listed under the RE Directive 2014/53/EU, the EMC Directive 2014/53/EU and the RoHS Directive 2011/65/EU.

WEEE This product is a WEEE (Waste of Electrical and Electronic Equipment) product. It should be disposed of in accordance with the applicable national laws in the European Union. For proper recycling, return this product to your local supplier upon the purchase of equivalent new equipment, or request it at a designated collection point. For more information see www.recycle.info.

Battery (battery directive) This product contains a battery that cannot be disposed of as unsorted municipal waste. For proper recycling, return this product to your local supplier upon the purchase of equivalent new equipment, or request it at a designated collection point. For more information see www.recycle.info.

BATTERY WARNING

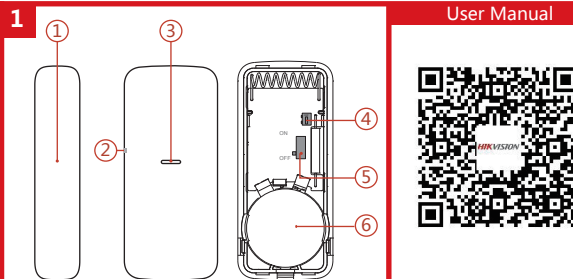
- Do not ignite battery, Chemical Burn Hazard
- Keep new and used batteries away from the children.
- Do not short-circuit the battery, or use the battery in a way that is not intended, stop using the product and keep it away from fire.
- If you think batteries might have been swallowed or placed inside any part of the body, seek immediate medical attention.

BATTERY CAUTION

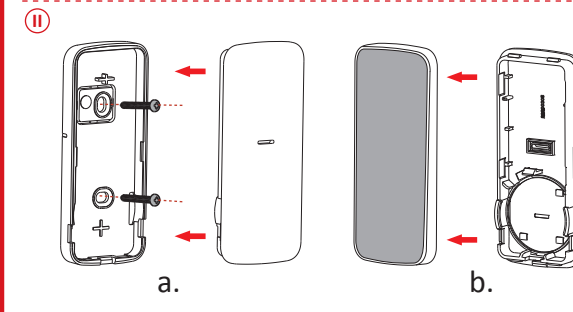
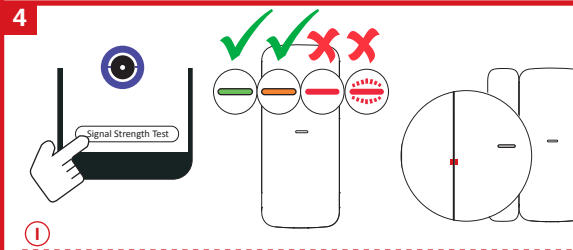
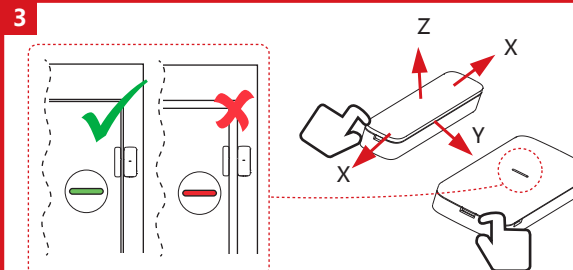
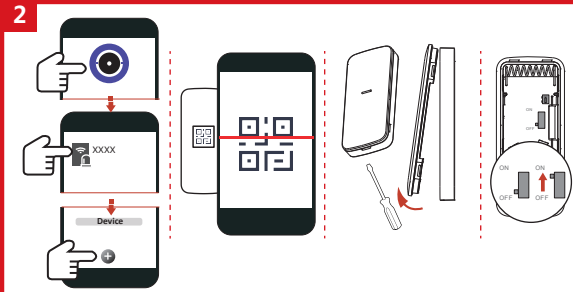
- Risk of fire or explosion if the battery is replaced by an incorrect type.
- Improper replacement of the battery with an incorrect type may create a safeguard (for example, in the case of a short circuit, an internal fire or a hot oven, or mechanically crush or cut the battery, which may result in an explosion).
- Do not dispose of the battery into fire or a hot oven, or mechanically crush or cut the battery, which may result in an explosion.
- Do not leave the battery in an extremely high temperature surrounding environment, which may result in an explosion or the leakage of battery electrolyte. Do not use the battery in an environment where the temperature is below 0 °C.
- Dispose of used batteries according to the instructions.

INSTALLATION CAUTION

- The additional force shall be equal to three times the weight of the equipment but not less than 50N. The equipment is to be installed on a wall or ceiling. Do not install the equipment on a wall or ceiling that is not strong enough to support the equipment. After the installation, the equipment is to be tested for stability.



User Manual



Español

1 ASPECTO

- Vara magnética
- Línea de posicionamiento
- Piloto
- Botón de manipulación
- Interruptor de alimentación
- Batería

2 REGISTRO

3 PRUEBA

Compruebe que la posición de instalación sea la adecuada.
Tabla de rendimiento de detección de imanes

Ejes de operación	Evento	Sin distancia nominal Distancia en el aire	Con distancia nominal de 5 mm Distancia en el aire
X+	Extraer	20	20
	Acercar	23	26
X-	Extraer	12	14
	Acercar	16	20
Y	Extraer	42	37
	Acercar	35	30
Z+	Extraer	50	48
	Acercar	43	42
Z-	Extraer	52	52
	Acercar	46	46

4 INSTALACIÓN

- Revise la intensidad de la señal y alinee la línea de posicionamiento.
- Instale el detector.
 - Con tornillo
 - Con burlete adhesivo de espuma

Manual de usuario

Escanee el código QR para obtener más información y ayuda sobre el funcionamiento.

Especificación

Espacio de detección	En función de la tabla de rendimiento de detección de imanes
Protección antimanipulación	Anterior y posterior
Indicador led	Azul (alarma)
Temperatura de funcionamiento	-10 °C a 55 °C (14 °F a 131 °F) -10 °C a 40 °C (14 °F a 104 °F) certificado
Temperatura de almacenamiento	-20 °C a 60 °C (-4 °F a 140 °F)
Humedad de funcionamiento	10 % a 90 %
Dimensiones (An. × Al. × Pr.)	Sensor: 29 mm × 69 mm × 10 mm Vara magnética: 14 mm × 69 mm × 10 mm
Peso	38 g
Frecuencia de transmisión	433.1MHz
Alcance de radiofrecuencia	1,2 km (área abierta)
Batería	1 batería CR2450 (incluida)
Vida útil de la batería convencional	3 años

Português

1 APARÊNCIA

- Adesivo magnético
- Linha de posicionamento
- Indicador
- Botão antiavaliação
- Interruptor
- Bateria

2 REGISTRO

3 TESTE

Verifique se a posição de instalação está adequada.
Tabela de desempenho de deteção magnética

Eixos de operação	Evento	Sem distância nominal Distância no ar	Com distância nominal de 5 mm Distância no ar
X+	Remover	20	20
	Aproximar	23	26
X-	Remover	12	14
	Aproximar	16	20
Y	Remover	42	37
	Aproximar	35	30
Z+	Remover	50	48
	Aproximar	43	42
Z-	Remover	52	52
	Aproximar	46	46

4 INSTALAÇÃO

- Verifique a intensidade do sinal e alinhe a linha de posicionamento.
- Instale o detector.
 - a com parafuso
 - com fita dupla-face de espuma

Manual do usuário

Leia o código QR para obter mais informações e ajuda na operação.

Especificação

Faixa de deteção	De acordo com a tabela de desempenho de deteção magnética
Proteção antiavaliação	Frontal e traseira
Indicador LED	Azul (alarme)
Temperatura de operação	-10 °C a 55 °C (14 °F a 131 °F) -10 °C a 40 °C (14 °F a 104 °F) certificado
Temperatura de armazenamento	-20 °C a 60 °C (-4 °F a 140 °F)
Umidade de operação	10% a 90%
Dimensões (L × A × P)	Sensor: 29 mm × 69 mm × 10 mm Adesivo magnético: 14 mm × 69 mm × 10 mm
Peso	38 g
Frequência de transmissão	433,1 MHz
Faixa de RF	1,2 km (área aberta)
Bateria	1 x CR2450 (incluída)
Duração padrão da bateria	3 anos



FCC Information
Please take attention that changes or modification not expressly approved by the party responsible for compliance could void the user's authority to operate the equipment.

FCC compliance: This equipment has been tested and found to comply with the limits for a Class B digital device, pursuant to part 15 of the FCC Rules. These limits are designed to provide reasonable protection against harmful interference in a residential installation. This equipment generates, uses and can radiate radio frequency energy and, if not installed and used in accordance with the instructions, may cause harmful interference to radio communications. However, there is no guarantee that interference will not occur in a particular installation. If this equipment does cause harmful interference to radio or television reception, which can be determined by turning the equipment off and on, the user is encouraged to try to correct the interference by one or more of the following measures:

- Reorient or relocate the receiving antenna.
- Increase the separation between the equipment and receiver.
- Connect the equipment into an outlet on a circuit different from that to which the receiver is connected.
- Consult the dealer or an experienced radio/TV technician for help.

FCC Conditions
This device complies with part 15 of the FCC Rules. Operation is subject to the following two conditions:

- This device may not cause harmful interference.
- This device must accept any interference received, including interference that may cause undesired operation.