

ENGLISH

1 APPEARANCE

1. Indicator 2. Bracket Tamper Port 3. Battery
4. Tamper Switch 5. Power Switch

2 ENROLLMENT

3 INSTALLATION

- I. Check signal strength.
II. Install the device.
a. Mount the detector with screw.
b. Mount the detector with sponge tape.
III. (Optional)Install the device with bracket.

4 TEST

User Manual

Scan the QR code for more information and operation help.

Specification

Detection range	12m, 85.9°
Auto sensitivity	Yes
Pet immunity	Up to 30kg (Height < 40cm)
Tamper protection	Front & Back
LED indicators	Green(PIR), Orange(microwave), Blue(alarm)
Operating temperature	-10 °C to 55 °C (14 °F to 131 °F) -10 °C to 40 °C (14 °F to 104 °F) EN Certified
Storage temperature	-20 °C to 60 °C (-4 °F to 140 °F)
Operating humidity	10% to 90%
Installation height	1.8 to 2.4m
Dimension (W × H × D)	65.5mm × 103mm × 48.5mm
Weight	141g
Transmission frequency	433.10 MHz
RF range	0.8 Km (free space)
Battery	CR123A x 2 (included)
Standard battery life	5 years

©2020 Hangzhou Hikvision Digital Technology Co., Ltd. All rights reserved.
About this Manual
The Manual includes instructions for using and managing the Product. Pictures, charts, images and all other information hereinafter are for description and explanation only. The information contained in the Manual is subject to change, without notice, due to firmware updates or other reasons. Please find the latest version of this Manual at the Hikvision website (https://www.hikvision.com/).
Please use this Manual with the guidance and assistance of professionals trained in supporting the Product.

HIKVISION and other Hikvision's trademarks and logos are the properties of Hikvision in various jurisdictions. Other trademarks and logos mentioned are the properties of their respective owners.
TO THE MAXIMUM EXTENT PERMITTED BY APPLICABLE LAW, THIS MANUAL AND THE PRODUCT DESCRIBED, WITH ITS HARDWARE, SOFTWARE AND FIRMWARE, ARE PROVIDED "AS IS" AND "WITH ALL FAULTS AND ERRORS". HIKVISION MAKES NO WARRANTIES, EXPRESS OR IMPLIED, INCLUDING WITHOUT LIMITATION MERCHANTABILITY, SATISFACTORY QUALITY, OR FITNESS FOR A PARTICULAR PURPOSE. THE USE OF THE PRODUCT BY YOU IS AT YOUR OWN RISK. IN NO EVENT WILL HIKVISION BE LIABLE TO YOU FOR ANY SPECIAL, CONSEQUENTIAL, INCIDENTAL, OR INDIRECT DAMAGES, INCLUDING, AMONG OTHERS, DAMAGES FOR LOSS OF BUSINESS PROFITS, BUSINESS INTERRUPTION, OR LOSS OF DATA, CORRUPTION OF SYSTEMS, OR LOSS OF DOCUMENTATION, WHETHER BASED ON BREACH OF CONTRACT, TORT (INCLUDING NEGLIGENCE), PRODUCT LIABILITY OR OTHERWISE, IN CONNECTION WITH THE USE OF THE PRODUCT, EVEN IF HIKVISION HAS BEEN ADVISED OF THE POSSIBILITY OF SUCH DAMAGES OR LOSS.
YOU ACKNOWLEDGE THAT THE NATURE OF INTERNET PROVIDES FOR INHERENT SECURITY RISKS, AND HIKVISION SHALL NOT TAKE ANY RESPONSIBILITIES FOR ABNORMAL OPERATION, PRIVACY LEAKAGE OR OTHER DAMAGES RESULTING FROM CYBER-ATTACK, HACKER ATTACK, VIRUS INSPECTION, OR OTHER INTERNET SECURITY RISKS. HOWEVER, HIKVISION WILL PROVIDE TRUSTED TECHNICAL SUPPORT IF REQUIRED. YOU AGREE TO USE THIS PRODUCT IN COMPLIANCE WITH ALL APPLICABLE LAWS, AND YOU ARE SOLELY RESPONSIBLE FOR ENSURING THAT YOUR USE CONFORMS TO THE APPLICABLE LAW, ESPECIALLY YOU ARE RESPONSIBLE FOR USING THIS PRODUCT IN A MANNER THAT DOES NOT INFRINGE ON THE RIGHTS OF THIRD PARTIES, INCLUDING WITHOUT LIMITATION, RIGHTS OF PUBLICITY, INTELLECTUAL PROPERTY RIGHTS, OR DATA PROTECTION AND OTHER PRIVACY RIGHTS. YOU SHALL NOT USE THIS PRODUCT FOR ANY PROHIBITED END-USES, INCLUDING THE DEVELOPMENT OR PRODUCTION OF WEAPONS OF MASS DESTRUCTION, THE DEVELOPMENT OR PRODUCTION OF CHEMICAL OR BIOLOGICAL WEAPONS, ANY ACTIVITIES IN THE CONTEXT RELATED TO ANY NUCLEAR EXPLOSIVE OR UNSAFE NUCLEAR FUEL-CYCLE, OR IN SUPPORT OF HUMAN RIGHTS ABUSES.
IN THE EVENT OF ANY CONFLICTS BETWEEN THIS MANUAL AND THE APPLICABLE LAW, THE LATER PREVAILS.

CE This product and - if applicable - the supplied accessories too are marked with "CE" and comply therefore with the applicable harmonized European standards listed under the RE Directive 2014/53/EU, the EMC Directive 2014/53/EU, the RoHS Directive 2011/65/EU.

2012/19/EU (WEEE directive): Products marked with this symbol cannot be disposed of as unsorted municipal waste in the European Union. For proper recycling, return this product to your local supplier upon the purchase of equivalent new equipment, or dispose of it at designated collection points. For more information see: www.recyclethis.info

2006/66/EC (battery directive): This product contains a battery that cannot be disposed of as unsorted municipal waste in the European Union. See the product documentation for specific battery information. The battery is marked with this symbol, which may include lettering to indicate cadmium (Cd), lead (Pb), or mercury (Hg). For proper recycling, return the battery to your supplier or to a designated collection point. For more information see: www.recyclethis.info

BATTERY CAUTION

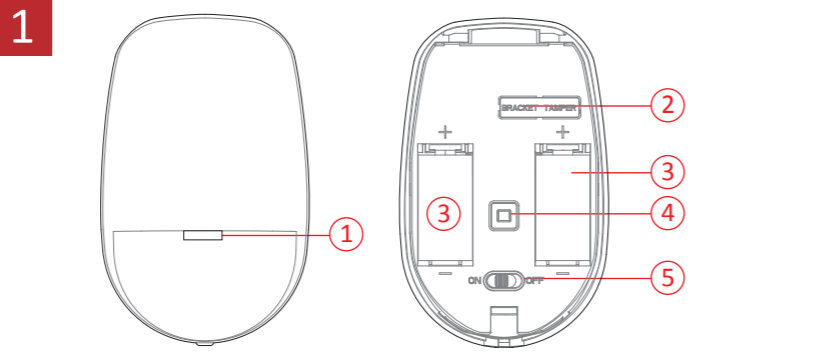
- replacement of a battery with an incorrect type that can defeat a safeguard (for example, in the case of some lithium battery types);
- disposal of a battery into fire or a hot oven, or mechanically crushing or cutting of a battery, that can result in an explosion;
- leaving a battery in an extremely high temperature surrounding environment that can result in an explosion or the leakage of flammable liquid or gas; and
- a battery subjected to extremely low air pressure that may result in an explosion or the leakage of flammable liquid or gas.

Chemical burning danger
Do not swallow the battery.
Keep new and used batteries away from the children.
If you think batteries might have been swallowed or placed inside any part of the body, seek medical attention immediately.

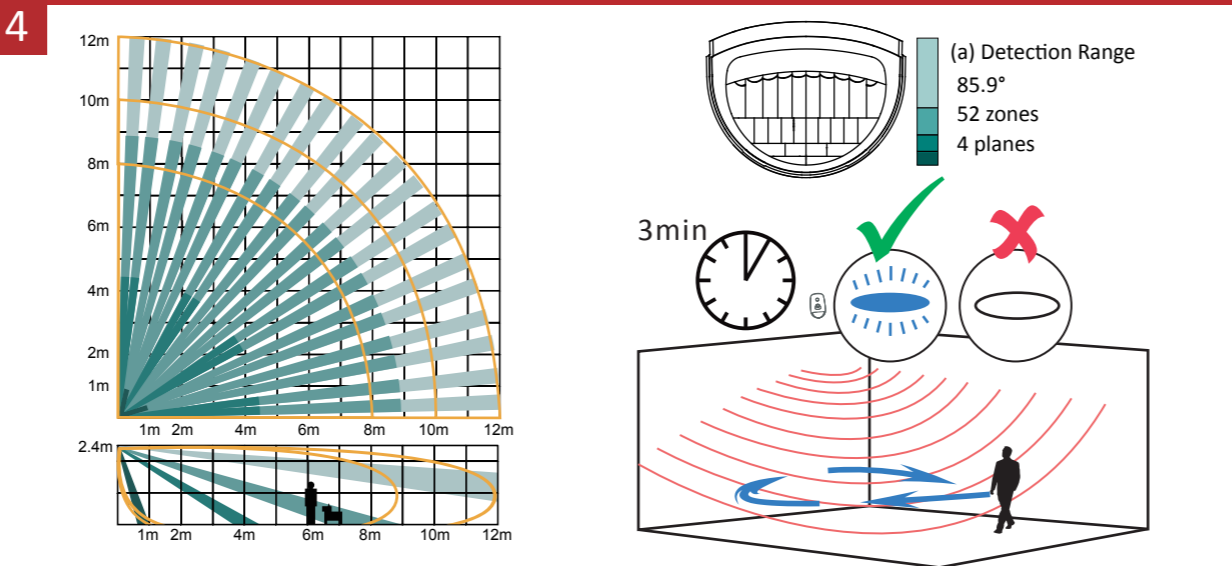
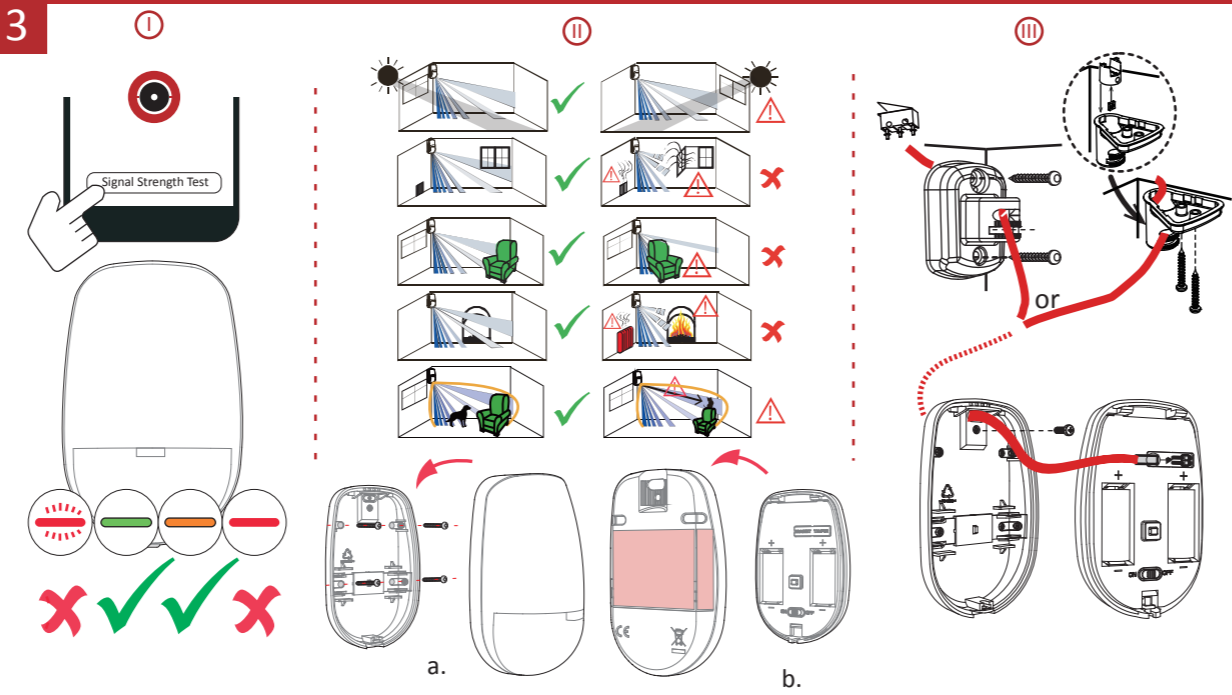
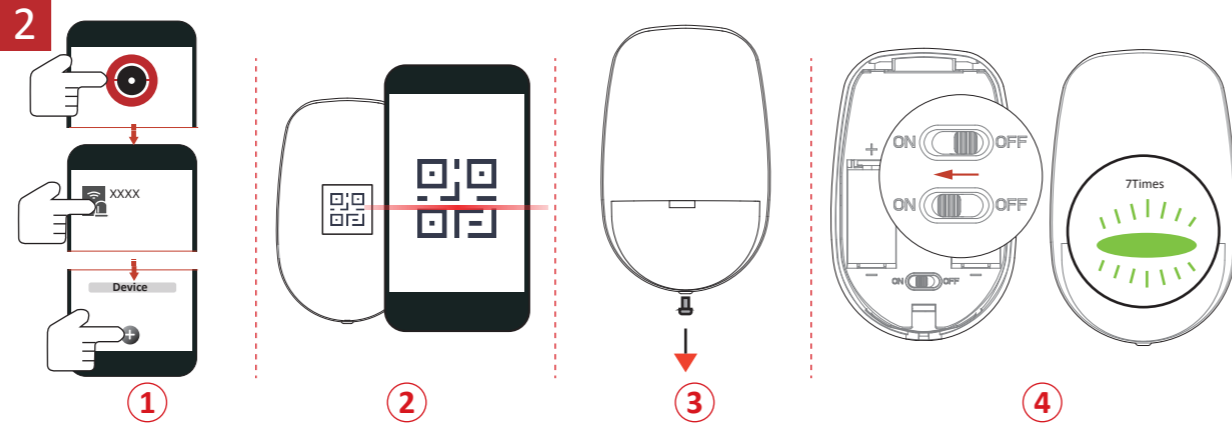
Risk of explosion if battery is replaced by an incorrect type.
Replacement of a battery with an incorrect type that can defeat a safeguard.
Dispose of used batteries according to the instructions and local regulation.
If the battery compartment does not close securely, stop using the product and keep it away from children.

INSTALLATION CAUTION

The additional force shall be equal to three times the weight of the equipment but not less than 50N. The equipment and its associated mounting means shall remain secure during the installation. After the installation, the equipment, including any associated mounting plate, shall



User Manual



ESPAÑOL

1 ASPECTO

1. Piloto 2. Puerto de manipulación del soporte 3. Batería
4. Interruptor antimanipulación 5. Interruptor de alimentación

2 REGISTRO

3 INSTALACIÓN

- I. Comprobar la intensidad de la señal.
II. Instalar el dispositivo.
a. Montaje del sensor con tornillos.
b. Montaje del sensor con burlete adhesivo de espuma.
III. Instalación del dispositivo con soporte (opcional).

4 PRUEBA

Manual de usuario

Escanee el código QR para obtener más información y ayuda sobre el funcionamiento.

Especificación

Alcance de detección	12 m, 85,9°
Sensibilidad automática	Sí
Inmunidad a las mascotas	Hasta 30 kg (altura < 40 cm)
Protección antimanipulación	Anterior y posterior
Indicadores led	Verde (Infrarrojo pasivo), anaranjado (microondas) y azul (alarma)
Temperatura de funcionamiento	-10 °C a 55 °C (14 °F a 131 °F) -10 °C a 40 °C (14 °F a 104 °F), con certificación EN
Temperatura de almacenamiento	-20 °C a 60 °C (-4 °F a 140 °F)
Humedad de funcionamiento	10 % a 90 %
Altura de instalación	1,8 a 2,4 m
Dimensiones (An. × Al. × Pr.)	65,5 mm × 103 mm × 48,5 mm
Peso	141 g
Frecuencia de transmisión	433.10 MHz
Alcance de radiofrecuencia	0,8 km (espacio libre)
Batería	2 baterías CR123A (incluidas)
Vida útil de la batería convencional	5 años

PORTUGUÊS

1 APRESENTAÇÃO

1. Indicador 2. Porta antivolação do suporte 3. Bateria
4. Interruptor de violação 5. Interruptor

2 REGISTRO

3 INSTALAÇÃO

- I. Verifique a intensidade do sinal.
II. Instale o dispositivo.
a. Monte o detector com parafusos.
b. Monte o detector com fita esponjosa.
III. Instale o dispositivo com suporte (opcional).

4 TESTE

Manual do usuário

Leia o código QR para mais informações e ajuda na operação.

Especificação

Alcance de detecção	12 m, 85,9°
Sensibilidade automática	Sim
Imunidade a pet	Até 30 kg (altura < 40 cm)
Proteção antivolação	Frontal e traseira
Indicadores LED	Verde (PIR), Laranja (micro-ondas), Azul (alarme)
Temperatura de operação	-10 °C a 55 °C (14 °F a 131 °F) -10 °C a 40 °C (14 °F a 104 °F) certificado EN
Temperatura de armazenamento	-20 °C a 60 °C (-4 °F a 140 °F)
Umidade de operação	10% a 90%
Altura de instalação	1,8 m a 2,4 m
Dimensões (L × A × P)	65,5 mm × 103 mm × 48,5 mm
Peso	141 g
Frequência de transmissão	433.10 MHz
Faixa de RF	0,8 km (espaço aberto)
Bateria	2 x CR123A (incluídas)
Duração padrão da bateria	5 anos



Warning
This is a class B product. In a domestic environment this product may cause radio interference in which case the user may be required to take adequate measures.



FCC Information
Please take attention that changes or modification not expressly approved by the party responsible for compliance could void the user's authority to operate the equipment.

FCC compliance: This equipment has been tested and found to comply with the limits for a Class B digital device, pursuant to part 15 of the FCC Rules. These limits are designed to provide reasonable protection against harmful interference in a residential installation. This equipment generates, uses and can radiate radio frequency energy and, if not installed and used in accordance with the instructions, may cause harmful interference to radio communications. However, there is no guarantee that interference will not occur in a particular installation. If this equipment does cause harmful interference to radio or television reception, which can be determined by turning the equipment off and on, the user is encouraged to try to correct the interference by one or more of the following measures:

- Reorient or relocate the receiving antenna.
- Increase the separation between the equipment and receiver.
- Connect the equipment into an outlet on a circuit different from that to which the receiver is connected.
- Consult the dealer or an experienced radio/TV technician for help.

FCC Conditions
This device complies with part 15 of the FCC Rules. Operation is subject to the following two conditions:

1. This device may not cause harmful interference.
2. This device must accept any interference received, including interference that may cause undesired operation