

ENGLISH

1 APPEARANCE

- 1. Indicator 2. Bracket Tamper Port 3. Battery
- 4. Tamper Switch 5. Power Switch

2 ENROLLMENT

3 INSTALLATION

- I. Check signal strength.
- II. Install the device.
  - a. Mount the detector with screw.
  - b. Mount the detector with sponge tape.
- III. (Optional) Install the device with bracket.

4 TEST

User Manual

Scan the QR code for more information and operation help.

Specification

Detection range	15m, 85.9°
Auto sensitivity	Yes
Pet immunity	Up to 30kg (Height<40cm)
Tamper protection	Front & Back
LED indicator	Blue(alarm)
Operating temperature	-10 °C to 55 °C (14 °F to 131 °F) -10 °C to 40 °C (14 °F to 104 °F) Certified
Storage temperature	-20 °C to 60 °C (-4 °F to 140 °F)
Operating humidity	10% to 90%
Installation height	1.8 to 2.4m
Dimension (W × H × D)	65.5mm × 103mm × 48.5mm
Weight	128g
Transmission frequency	433.1MHz
RF range	1.6Km (open area)
Battery	CR123A x 1 (included)
Standard battery life	5 years
Low Voltage Value	2.45 V

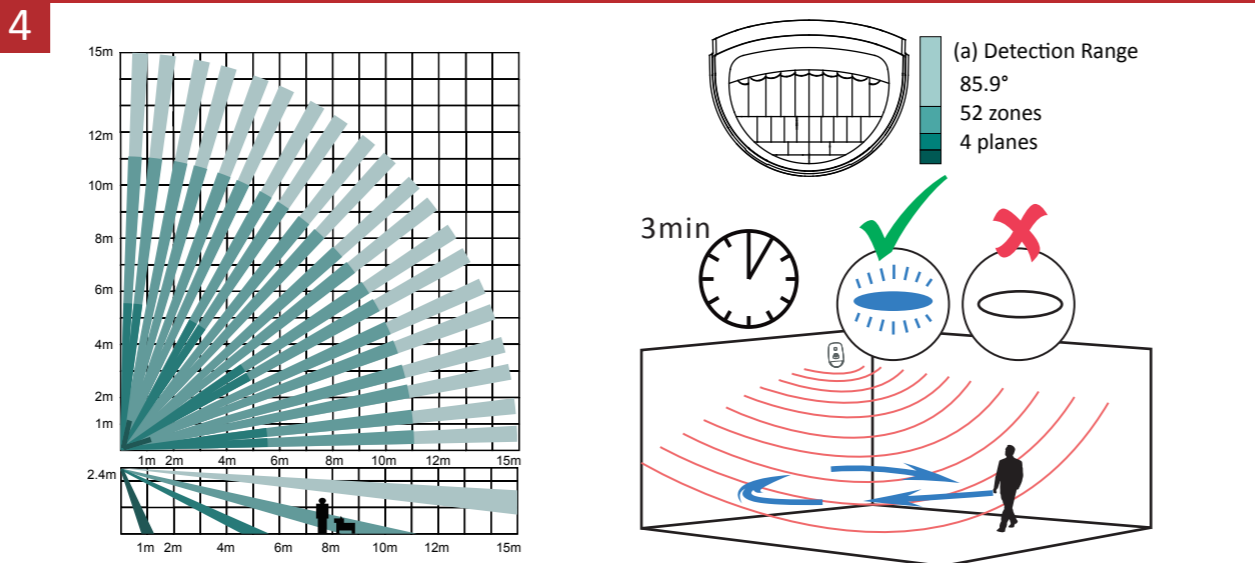
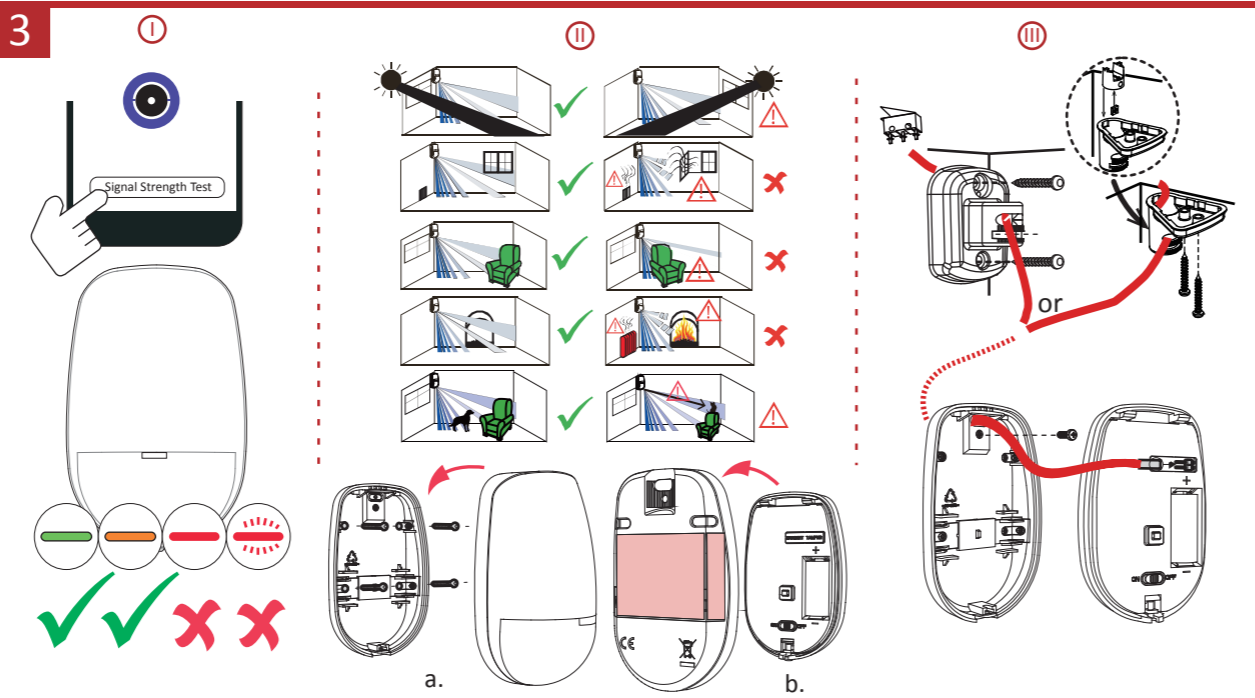
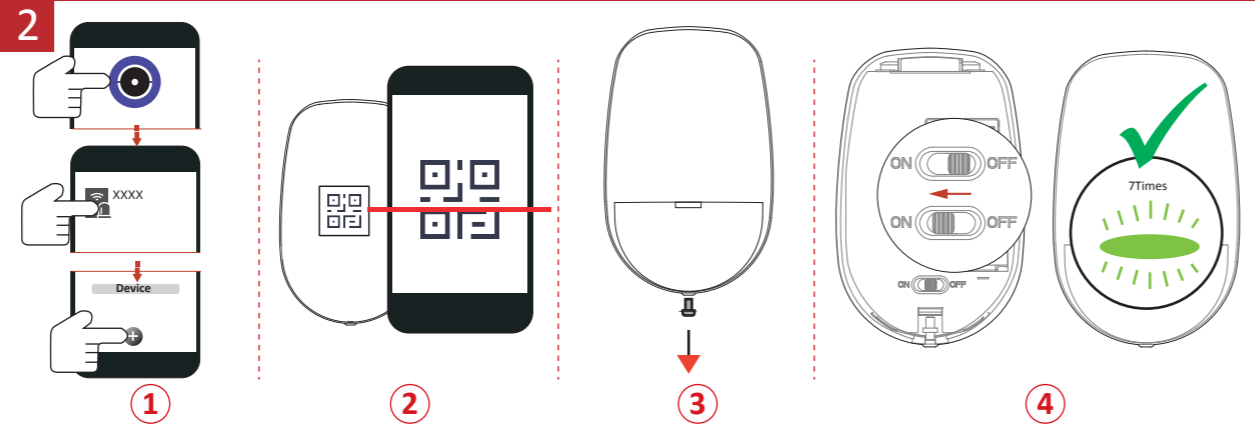
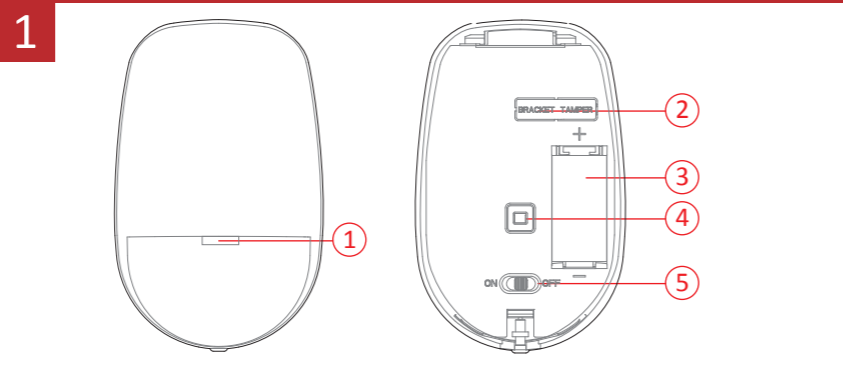
©2020 Hangzhou Hikvision Digital Technology Co., Ltd. All rights reserved.  
About this Manual  
The Manual includes instructions for using and managing the Product. Pictures, charts, images and all other information hereinafter are for description and explanation only. The information contained in this Manual is subject to change without notice, due to firmware updates or other reasons. Please find the latest version of this Manual at the Hikvision website (https://www.hikvision.com/).  
Please use this Manual with the guidance and assistance of professionals trained in supporting the Product.  
HIKVISION and other Hikvision's trademarks and logos are the properties of Hikvision in various jurisdictions. Other trademarks and logos mentioned are the properties of their respective owners.  
TO THE MAXIMUM EXTENT PERMITTED BY APPLICABLE LAW, THIS MANUAL AND THE PRODUCT DESCRIBED, WITH ITS HARDWARE, SOFTWARE AND FIRMWARE, ARE PROVIDED "AS IS" AND "WITH ALL FAULTS AND ERRORS". HIKVISION MAKES NO WARRANTIES, EXPRESS OR IMPLIED, INCLUDING WITHOUT LIMITATION, MERCHANTABILITY, SATISFACTORY QUALITY, OR FITNESS FOR A PARTICULAR PURPOSE. THE USE OF THE PRODUCT BY YOU IS AT YOUR OWN RISK. IN NO EVENT WILL HIKVISION BE LIABLE TO YOU FOR ANY SPECIAL, CONSEQUENTIAL, INCIDENTAL OR INDIRECT DAMAGES, INCLUDING, AMONG OTHERS, DAMAGES FOR LOSS OF BUSINESS PROFITS, BUSINESS INTERFERENCES, BUSINESS INTERRUPTION, CORRUPTION OF SYSTEMS, OR LOSS OF DOCUMENTATION, WHETHER BASED ON BREACH OF CONTRACT, TORT (INCLUDING NEGLIGENCE), PRODUCT LIABILITY, OR OTHERWISE, IN CONNECTION WITH THE USE OF THE PRODUCT, EVEN IF HIKVISION HAS BEEN ADVISED OF THE POSSIBILITY OF SUCH DAMAGES OR LOSS.  
YOU ACKNOWLEDGE THAT THE NATURE OF INTERNET PROVIDES FOR INHERENT SECURITY RISKS, AND HIKVISION SHALL NOT TAKE ANY RESPONSIBILITIES FOR ABNORMAL OPERATION, PRIVACY LEAKAGE OR OTHER DAMAGES RESULTING FROM SPYWARE, VIRUS, HACKING, ATTACK, WORMS INFESTATION, OR OTHER INTERNET SECURITY RISKS. HOWEVER, HIKVISION WILL PROVIDE TIMELY TECHNICAL SUPPORT IF REQUIRED.  
ENSURING THAT YOUR USE CONFORMS TO THE APPLICABLE LAW, ESPECIALLY YOU ARE RESPONSIBLE. FOR USING THIS PRODUCT IN A MANNER THAT DOES NOT INFRINGE ON THE RIGHTS OF THIRD PARTIES, INCLUDING WITHOUT LIMITATION, RIGHTS OF PUBLICITY, INTELLECTUAL PROPERTY RIGHTS, OR DATA PROTECTION AND OTHER PRIVACY RIGHTS, YOU SHALL NOT USE THIS PRODUCT FOR ANY PROHIBITED END-USES, INCLUDING THE DEVELOPMENT OR PRODUCTION OF WEAPONS OF MASS DESTRUCTION, THE DEVELOPMENT OR PRODUCTION OF CHEMICAL OR BIOLOGICAL WEAPONS, ANY ACTIVITIES IN THE CONTEXT RELATED TO ANY NUCLEAR EXPLOSIVE OR UNSAFE NUCLEAR FUEL CYCLE, OR IN SUPPORT OF HUMAN RIGHTS ABUSES.  
IN THE EVENT OF ANY CONFLICTS BETWEEN THIS MANUAL AND THE APPLICABLE LAW, THE LATER PREVAILS.

CE This product and - if applicable - the supplied accessories too are marked with "CE" and comply therefore with the applicable harmonized European standards listed under the RoHS Directive 2011/65/EU, the EMC Directive 2014/53/EU, the RoHS Directive 2011/65/EU.  
2012/19/EU (WEEE directive): Products marked with this symbol cannot be disposed of as unsorted municipal waste in the European Union. For proper recycling, return this product to your local supplier upon the purchase of equivalent new equipment, or dispose of it at designated collection points. For more information see: www.recyclethis.info  
2006/66/EC (battery directive): This product contains a battery that cannot be disposed of as unsorted municipal waste in the European Union. See the product documentation for specific battery information. The battery is marked with this symbol, which may include lettering to indicate cadmium (Cd), lead (Pb), or mercury (Hg). For proper recycling, return the battery to your supplier or to a designated collection point. For more information see: www.recyclethis.info

BATTERY WARNING  
1. Do not ingest battery. Chemical Burn Hazard  
2. Keep new and used batteries away from the children.  
3. If the battery compartment does not close securely, stop using the product and keep it away from children.  
4. If you think batteries might have been swallowed or placed inside any part of the body, seek immediate medical attention.

BATTERY CAUTION  
1. Risk of fire or explosion if the battery is replaced by an incorrect type.  
2. Improper replacement of the battery with an incorrect type may defeat a safeguard (for example, in the case of some lithium battery types).  
3. Do not dispose of the battery into fire or a hot oven, or mechanically crush or cut the battery, which may result in an explosion.  
4. Do not leave the battery in an extremely high temperature surrounding environment, which may result in an explosion or the leakage of flammable liquid or gas.  
5. Do not subject the battery to extremely low air pressure, which may result in an explosion or the leakage of flammable liquid or gas.  
6. Dispose of used batteries according to the instructions

INSTALLATION CAUTION  
The additional force shall be equal to three times the weight of the equipment but not less than 50N. The equipment and its associated mounting means shall remain secure during the installation. After the installation, the equipment, including any associated mounting plate, shall not be damaged.



ESPAÑOL

1 ASPECTO

- 1. Piloto 2. Puerto antimanipulación del soporte 3. Batería
- 4. Interruptor antimanipulación 5. Interruptor de alimentación

2 REGISTRO

3 INSTALACIÓN

- I. Comprobar la intensidad de la señal.
- II. Instalar el dispositivo.
  - a. Monte el sensor con tornillos.
  - b. Monte el sensor con cinta adhesiva doble cara de espuma.
- III. Instalación del dispositivo con soporte (opcional).

4 PRUEBA

Manual de usuario

Escanee el código QR para obtener más información y ayuda sobre el funcionamiento.

Especificación

Alcance de detección	15 m, 85,9°
Sensibilidad automática	Sí
Inmunidad a las mascotas	Hasta 30 kg (altura < 40 cm)
Protección antimanipulación	Anterior y posterior
Indicador led	Azul (alarma)
Temperatura de funcionamiento	-10 °C a 55 °C (14 °F a 131 °F) -10 °C a 40 °C (14 °F a 104 °F), certificado
Temperatura de almacenamiento	-20 °C a 60 °C (-4 °F a 140 °F)
Humedad de funcionamiento	10 % a 90 %
Altura de instalación	1,8 a 2,4 m
Dimensiones	65,5 mm x 103 mm x 48,5 mm
Peso	128 g
Frecuencia de transmisión	433.1 MHz
Alcance de radiofrecuencia	1,6 km (área abierta)
Batería	1 batería CR123A (incluida)
Vida útil de la batería convencional	5 años

PORTUGUÊS

1 APRESENTAÇÃO

- 1. Indicador 2. Porta antiavaliação do suporte 3. Bateria
- 4. Interruptor de violação 5. Interruptor

2 REGISTRO

3 INSTALAÇÃO

- I. Verifique a intensidade do sinal.
- II. Instale o dispositivo.
  - a. Monte o detector com parafusos.
  - b. Monte o detector com fita esponjosa.
- III. Instale o dispositivo com suporte (opcional).

4 TESTE

Manual do usuário

Leia o código QR para mais informações e ajuda na operação.

Especificação

Alcance de deteção	15 m, 85,9°
Sensibilidade automática	Sim
Inmidade a pet	Até 30 kg (altura < 40 cm)
Proteção antiavaliação	Frontal e traseira
Indicador LED	Azul (alarma)
Temperatura de operação	-10 °C a 55 °C (14 °F a 131 °F) -10 °C a 40 °C (14 °F a 104 °F) certificada
Temperatura de armazenamento	-20 °C a 60 °C (-4 °F a 140 °F)
Umidade de operação	10% a 90%
Altura de instalação	1,8 m a 2,4 m
Dimensões (L x A x P)	65,5 mm x 103 mm x 48,5 mm
Peso	128 g
Frecuência de transmissão	433.1 MHz
Faixa de RF	1,6 km (espaço aberto)
Bateria	1 x CR123A (incluída)
Duração padrão da bateria	5 anos

**FC** FCC Information  
Please take attention that changes or modification not expressly approved by the party responsible for compliance could void the user's authority to operate the equipment.  
FCC compliance: This equipment has been tested and found to comply with the limits for a Class B digital device, pursuant to part 15 of the FCC Rules. These limits are designed to provide reasonable protection against harmful interference in a residential installation. This equipment generates, uses and can radiate radio frequency energy and, if not installed and used in accordance with the instructions, may cause harmful interference to radio communications. However, there is no guarantee that interference will not occur in a particular installation. If this equipment does cause harmful interference to radio or television reception, which can be determined by turning the equipment off and on, the user is encouraged to try to correct the interference by one or more of the following measures:  
—Reorient or relocate the receiving antenna.  
—Increase the separation between the equipment and receiver.  
—Connect the equipment into an outlet on a circuit different from that to which the receiver is connected.  
—Consult the dealer or an experienced radio/TV technician for help.  
FCC Conditions  
This device complies with part 15 of the FCC Rules. Operation is subject to the following two conditions:  
1. This device may not cause harmful interference.  
2. This device must accept any interference received, including interference that may cause undesired operation