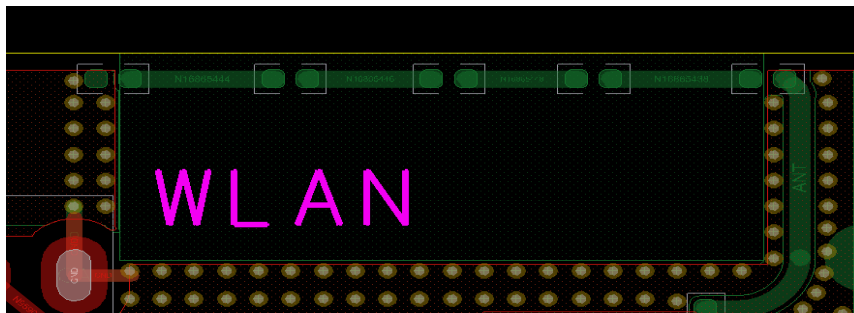


Antenna Specifications

Design Specifications	Typical
Antenna Type*	PCB
Working Frequency	2400-2500MHz
Antenna Gain	1.5dbi
Antenna Efficiency	≥ 45%
VSWR	≤ 1.7
Impedance	50 ohm
Overall Dimensions*	15mm*5mm



2.4GHz 方向图

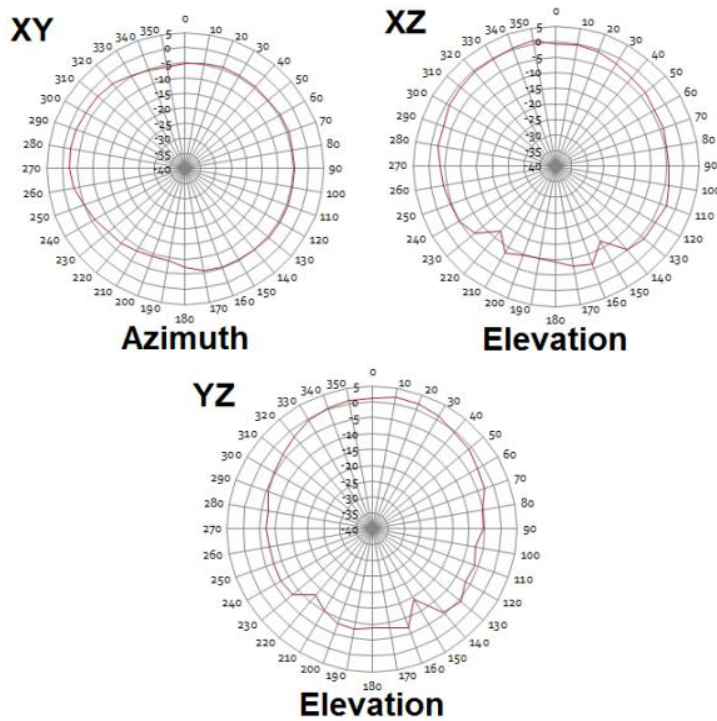


Figure 3
2.4GHz Radiation Patterns