

Hybrid Control Panel  
Quick Start Guide

ENGLISH

Diagram References

1 Installation and Wiring

- 1-3. Install the device.
4. Fix the SIM card module (sold separately) and connect the antenna.
5. Fix the telephone module (sold separately).
6. Wire Wi-Fi antenna.

Note: Power down the control panel before wiring accessories and peripherals.

- 1 Network Wiring
- 2 Peripherals/Power Supply Wiring
  1. Alarm Input Wiring
    - a. NC Detector
    - b. NO Detector
    - c. Unoccupied Zone
  2. Alarm Output Wiring
    - a. RS-485 Wiring: Wireless Receiver , keypad, etc.,
    - b. RS-485 Wiring: Wireless Receiver , keypad, etc.,
    - c. RS-485 Wiring: Wireless Receiver , keypad, etc.,
  3. RS-485 Wiring: Wireless Receiver , keypad, etc.,
  4. Power Supply Wiring
- 3 Telephone Module Wiring
7. Close and lock the case of the control panel.

2 Set Up

Note: After the user connects the power cord according to the figure, fix it with a cable tie to avoid the cable falling off due to external force, causing a short circuit and other dangers.

For more activation methods ,refer to the User Manual.

Set up via Web Client

- Default IP Address:  
Mobile browser(AP mode):192.168.8.1  
Network cable connection: 192.0.0.64

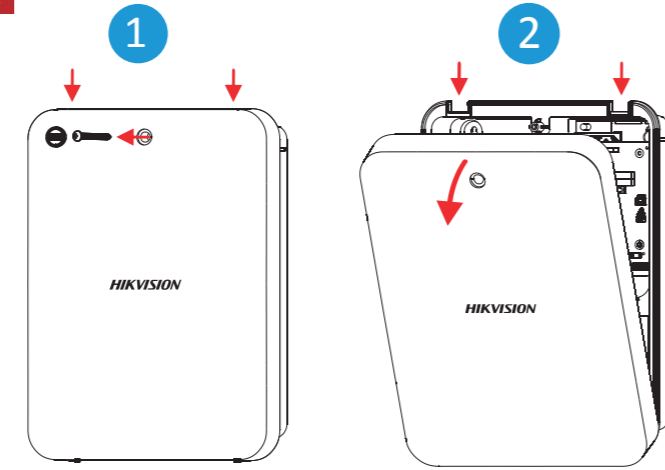
1. Enter the device IP address in the web browser.
2. Create a password for admin account to activate the device.

Reset:  
After the device is started, hold the reset button for 10 seconds to reset the device.

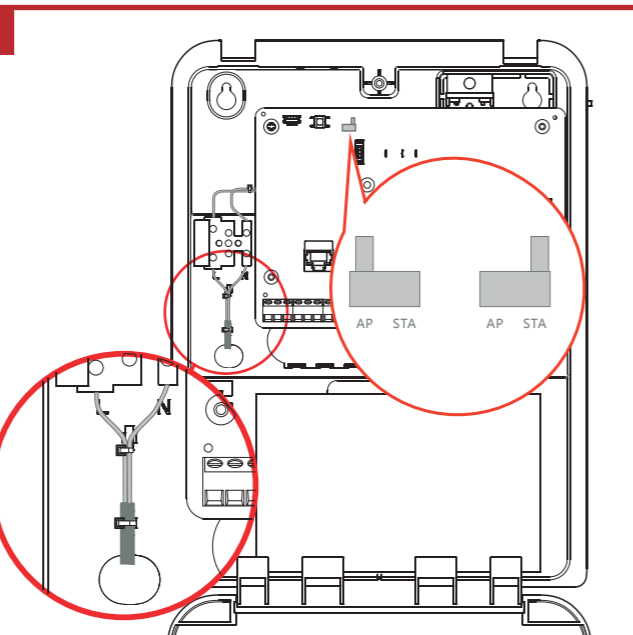
Specification

| Model             | DS-PHA64-P2  | DS-PHA64-W4P2   |
|-------------------|--|---|
| Device connection | Detector<br>Relay output<br>RS-485 wireless receiver                           | UP to 64 (8 on-board, 56 wired/wireless)<br>Up to 64 (4 on-board, 60 wired/wireless)<br>Up to 7                                     |
| Alarm input       | Siren<br>Keyfob  | 1 wired sirens (on-board connection)<br>2 wireless sirens<br>8  |
| Function          | Notification<br>Network camera   | alternate SMS&Phone call with 3G 4G GPRS<br>N/A 4   |
| Protocol          | Protocol   | ISAPI, DC09, ISUP   |
| Network           | Wired network<br>Cellular network  | 10M/100M Ethernet<br>alternate (with 3G/4G/GPRS module)   |
| Wi-Fi/AP          | Standard   | N/A<br>802.11b/g/n  |
| User              | User<br>Tag/Card   | Installer: 1; Administrator: 1;<br>Manufacturer:1<br>Operator: 45<br>12   |
| Others            | Operation temperature<br>Operation humidity<br>Dimension (W x H x D)<br>Weight | -10 °C to 55 °C (-4 °F to 122 °F)<br>10% to 90% (No condensing)<br>310 mm (12.2") x 225 mm (8.6") x 95 mm (3.7")<br>1.15 kg 1.17 kg |

1



2



User Manual Legal and Regulatory Information



©2020 Hangzhou Hikvision Digital Technology Co., Ltd. All rights reserved.  
The manual is subject to change without notice. Due to firmware updates or other reasons, please find the latest version of this manual at the Hikvision website.  
Please refer to this manual with the guidance and assistance of professionals trained in supporting the product.  
All trademarks and other trademarks mentioned are the properties of their respective owners.  
TO THE MAXIMUM EXTENT PERMITTED BY APPLICABLE LAW, THIS MANUAL AND THE PRODUCT DESCRIBED, WITH ITS HARDWARE, SOFTWARE AND FIRMWARE, ARE PROVIDED "AS IS" AND "WITH ALL FAULTS AND ERRORS". HIKVISION MAKES NO WARRANTIES, EXPRESS OR IMPLIED, INCLUDING WITHOUT LIMITATION, MERCHANTABILITY, SATISFACTORY QUALITY OR FITNESS FOR A PARTICULAR PURPOSE. THE USE OF THE PRODUCT BY YOU IS AT YOUR OWN RISK. IN NO EVENT WILL HIKVISION BE LIABLE TO YOU FOR ANY SPECIAL, CONSEQUENTIAL, INCIDENTAL, OR INDIRECT DAMAGES, INCLUDING, AMONG OTHERS, DAMAGES FOR LOSS OF BUSINESS PROFITS, BUSINESS INTERRUPTION, OR LOSS OF DATA, CORRUPTION OF SYSTEMS, OR LOSS OF DOCUMENTATION, WHETHER BASED ON BREACH OF CONTRACT, TORT (INCLUDING NEGLIGENCE), PRODUCT LIABILITY OR OTHERWISE, IN CONNECTION WITH THE USE OF THE PRODUCT. EVEN IF HIKVISION HAS BEEN ADVISED OF THE POSSIBILITY OF SUCH DAMAGES OR LOSSES, YOU ACKNOWLEDGE THAT THE NATURE OF INTERNET PROVIDES FOR INHERENT SECURITY RISKS, AND HIKVISION SHALL NOT TAKE ANY RESPONSIBILITIES FOR MINORAL OPERATION, PRIVACY LEAKAGE OR OTHER DAMAGES RESULTING FROM CYBER ATTACK, HACKER ATTACK, VIRUS INFECTION, OR OTHER INTERNET SECURITY RISKS. HOWEVER, HIKVISION WILL PROVIDE TRUSTED TECHNICAL SUPPORT IF REQUIRED. YOU AGREE TO USE THIS PRODUCT IN COMPLIANCE WITH ALL APPLICABLE LAWS, AND YOU ARE SOLELY RESPONSIBLE FOR ENSURING THAT YOUR USE CONFORMS TO THE APPLICABLE LAW. YOU ARE RESPONSIBLE FOR USING THIS PRODUCT IN A MANNER THAT DOES NOT INFRINGE ON THE RIGHTS OF THIRD PARTIES, INCLUDING WITHOUT LIMITATION, RIGHTS OF PUBLICITY, INTELLECTUAL PROPERTY RIGHTS, OR DATA PROTECTION AND OTHER PRIVACY RIGHTS. YOU SHALL NOT USE THIS PRODUCT FOR ANY PURPOSES THAT VIOLATE THE APPLICABLE LAW. THE LATEST VERSION OF THIS PRODUCT IS AVAILABLE ON THE HIKVISION WEBSITE.  
2012/19/EU (WEEE Directive): Products marked with this symbol cannot be disposed of as unsorted municipal waste in the European Union. For proper recycling, return this product to your local supplier upon the purchase of equivalent new equipment, or dispose of it at designated collection points. For more information see: www.recycle4it.eu  
2006/66/EC (Battery Directive): This product contains a battery that cannot be disposed of as unsorted municipal waste in the European Union. See the product documentation for specific battery information. The battery is marked with this symbol, which may include lettering to indicate cadmium (Cd), lead (Pb), or mercury (Hg). For proper recycling, return the battery to your supplier or to a designated collection point. For more information see: www.recycle4it.eu  
CE This product and, if applicable, the supplied accessories too are marked with "CE" and comply therefore with the applicable harmonized European standards listed under the CE Directive 2014/53/EU, the EMC Directive 2014/53/EU, the LVD Directive 2014/30/EU, the RoHS Directive 2011/65/EU Class II equipment.  
To identify equipment meeting the safety requirements specified for Class II equipment according to IEC 61140.  
Note: The position of the double-square symbol shall be such that it is obvious that the symbol is part of the technical information and can in no way be confused with the manufacturer's name or other identification.  
FCC Information  
FCC compliance: This equipment has been tested and found to comply with the limits for a Class B digital device, pursuant to part 15 of the FCC Rules. These limits are designed to provide reasonable protection against harmful interference in a residential installation. This equipment generates, uses and can radiate radio frequency energy and, if not installed and used in accordance with the instructions, may cause harmful interference to radio communications. However, there is no guarantee that interference will not occur in a particular installation. If this equipment does cause harmful interference to radio or television reception, which can be determined by turning the equipment off and on, the user is encouraged to try to correct the interference by one or more of the following measures:  
—Reorient or relocate the receiving antenna.  
—Increase the separation between the equipment and receiver.  
—Connect the equipment to an outlet on a circuit different from that to which the receiver is connected.  
—Consult the dealer or an experienced radio/TV technician for help.  
This equipment should be installed and operated with a minimum distance 20cm between the radiator and your body.  
The device complies with part 15 of the FCC Rules. Operation is subject to the following two conditions:  
1. This device may not cause harmful interference.  
2. This device must accept any interference received, including interference that may cause undesired operation.  
INSTALLATION CAUTION  
1. The additional force shall be equal to three times the weight of the equipment but not less than 50N. The equipment and its associated mounting means shall remain secure during the installation. After the installation, the equipment, including any associated mounting plate, shall not be damaged.  
2. Install the equipment according to the instructions in this manual.  
3. To prevent injury, this equipment must be securely attached to the floor/wall in accordance with the installation instructions.  
CAUTION  
1. This equipment is not suitable for use in locations where children are likely to be present.  
2. CAUTION: Risk of explosion if the battery is replaced by an incorrect type.  
3. Improper replacement of the battery with an incorrect type may defeat a safeguard (for example, in the case of some lithium battery types).  
4. Do not dispose of the battery into fire or a hot oven, or mechanically crush or cut the battery, which may result in an explosion.  
5. Do not leave the battery in an extremely high temperature surrounding environment, which may result in an explosion or the leakage of flammable liquid or gas.  
6. Do not subject the battery to extremely low air pressure, which may result in an explosion or the leakage of flammable liquid or gas.  
7. Dispose of used batteries according to the instructions.

- ⚠ Fuse Cutout: rated voltage 250 V, rated current 6 A.
- ⚠ Mains supply cables need to meet IEC 60332 or UL certification.
- ⚠ AUX+ output interface: DC12 V, 1000 mA.
- ⚠ BELL+ output interface: DC12 V, 500 mA.
- ⚠ Allowed batteries specifications:  
rated voltage 12 V, capacity 7Ah, Min. charging current ≥ 1 A,  
flame class of shell V-0.

