

AX PRO
Quick Start Guide

EN 50131-1-2006+A2:2017
EN 50131-3:2009
EN 50131-6:2017
EN 50131-5-3:2017
EN 50131-10:2014
EN 50136-2:2013
Security Grade(SG)2
Environmental Class(EC) II
Certified by Telefication

ENGLISH

1 APPEARANCE

1. Function Indicator

- | | | | |
|---------------------|----------------------|---------------------|---------|
| ▲ Fault | 🔗 Link | 🔒 Arm/Disarm | 🔔 Alarm |
| 2. Power Indicator | 6. Serial Port | 10. SIM Card 2 Slot | |
| 3. Tag Present Area | 7. Power Interface | 11. SIM Card 1 Slot | |
| 4. Tamper Switch | 8. Power Switch | 12. Serial Port | |
| 5. Reset Button | 9. Network Interface | | |

Note: the SIM card functions vary depending on the model.

2 WIRING AND POWER ON

3 SET UP

1. Add the AX PRO to Hik-ProConnect or Hik-Connect APP.
2. Enroll the peripheral to the AX PRO.

4 INSTALLATION

- ★ Tamper Screw (compulsory)

5 RESET

1. Restart the device, the power LED flashes 3 times.
2. Hold the reset button for 5 s.

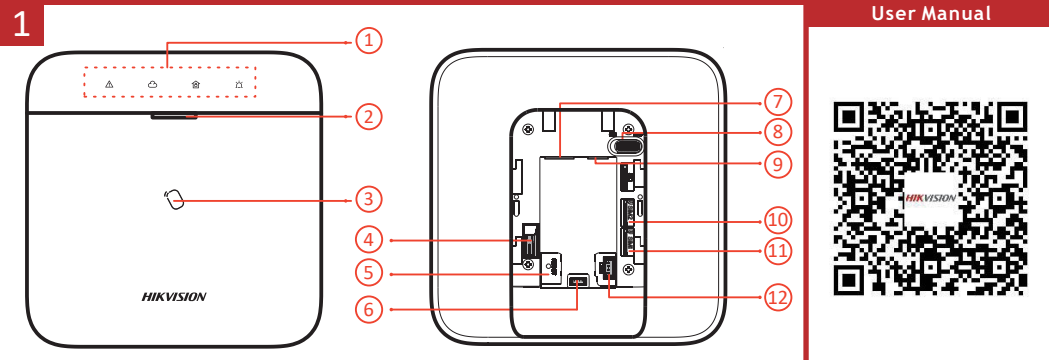
User Manual

Scan the QR code for more information and operation help.

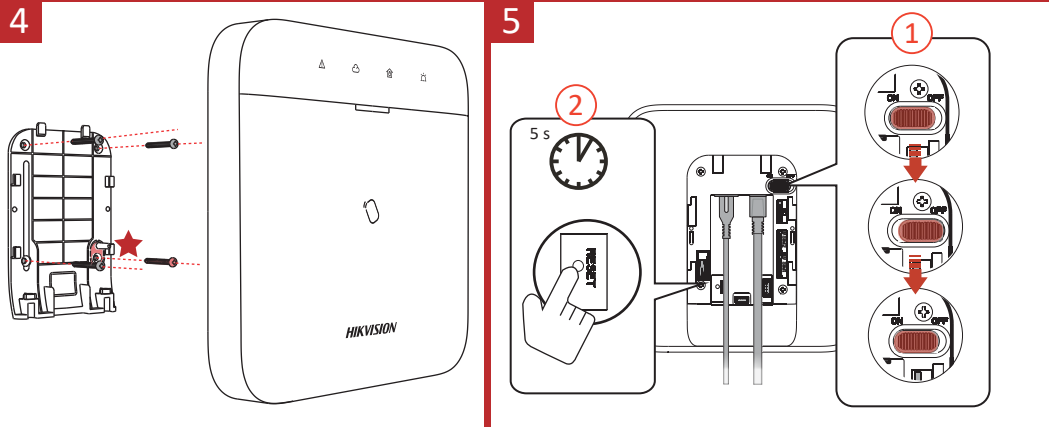
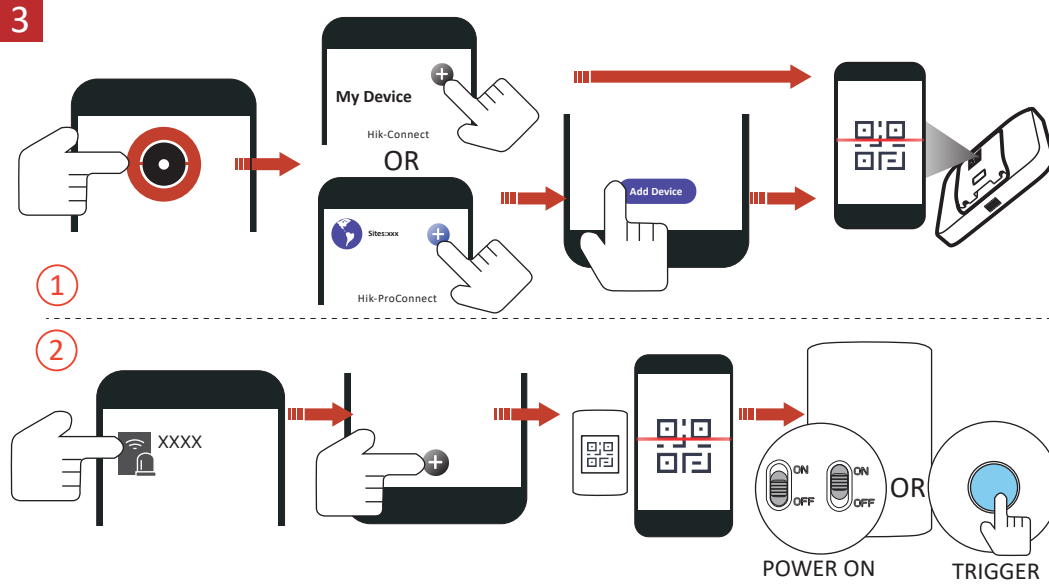
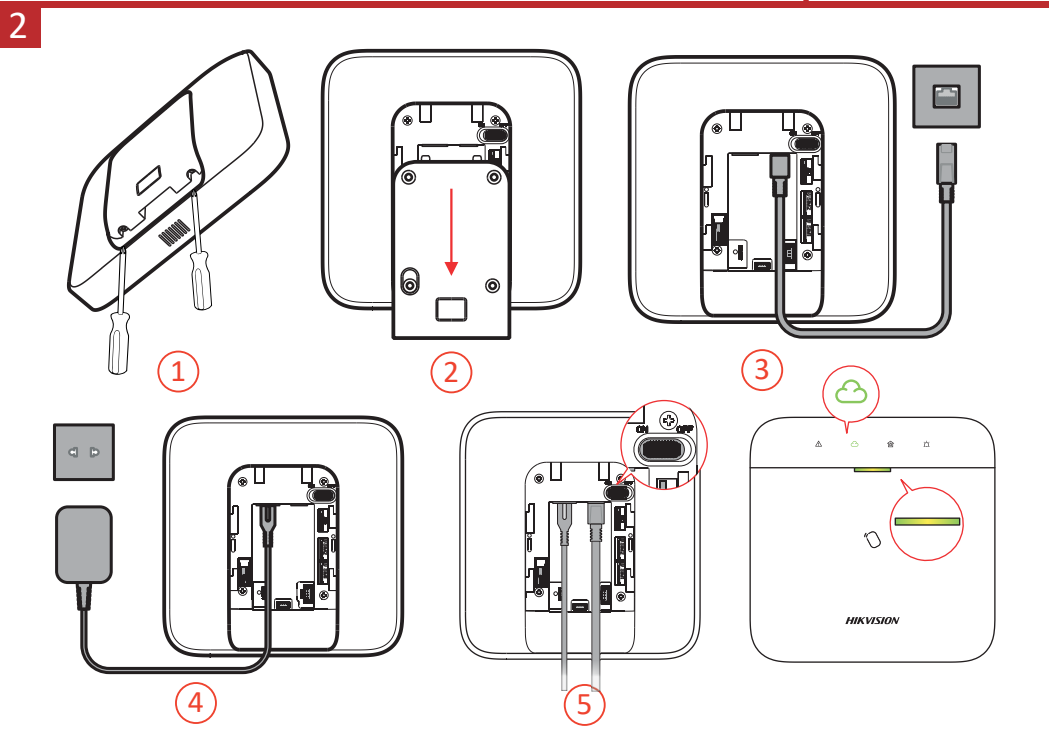
Specification

		AX PRO	
Parameters		64 Series	96 Series
Basic	RF frequency	915 Mhz	
	Wireless zones, Relay, Smart Plug, Module & wall switch	Up to 64	Up to 96
	Wireless tag Reader & keypad, Tag	Up to 8, 32	Up to 8, 48
	Wireless Sounders, key fobs, repeaters	4, 32, 2	6, 48, 4
	PIR camera	2	4
User	IP camera integration	0	4 x 7s clips
	Installer, admin, user	1, 1, 30	1, 1, 46
software	Area	16	32
	LEDs indication	Arm/Disarm, Alarm, Tamper, Fault, Cloud, Power	
	Memory Log stored	5000	5000
Communication	LAN port	Wi-Fi(2.4G), LAN port, GPRS on board	LAN port, Wi-Fi(2.4G), 3/4G on board
	SIM slot Protocol	Single	Dual
Hardware	Power supply	100 to 240 VAC	
	Battery	Built in on board Battery, Up to 12 hrs standby	
Approvals	EN Grade 2, CE, Rohs/Reach/WEEE		
Others	Consumption	100-240V to 50/60Hz, 0.1A-0.064A	
	Operation Environment	Temperature: -10°C to 50°C, Humidity: 10 to 90%	
	Dimension(W x H x D)	170.0 mm (6.7") x 170.0 (6.7") mm x 38.6 mm (1.5")	
	Weight	557.5 g(19.7 oz)	

Note:
64 Series includes DS-PWA64-L-WA, DS-PWA64-L-WAUHK, DS-PWA64-L-WACKV, DS-PWA64-L-WALV, DS-PWA64-L-WAKVO, DS-PWA64-L-WAHUN
96 Series includes DS-PWA96-M-WA, DS-PWA96-M-WAUHK, DS-PWA96-M-WACKV, DS-PWA96-M-WALV, DS-PWA96-M-WAKVO, DS-PWA96-M-WAHUN



User Manual



©2020 Hangzhou Hikvision Digital Technology Co., Ltd. All rights reserved.
About this Manual
The Manual includes instructions for using and managing the Product. Pictures, charts, images and all other information hereinafter are for description and explanation only. The information contained in the Manual is subject to change, without notice, due to firmware updates or other reasons. Please find the latest version of this Manual at the Hikvision website (https://www.hikvision.com/).
Please use this Manual with the guidance and assistance of professionals trained in supporting the Product.
HIKVISION and other Hikvision's trademarks and logos are the properties of Hikvision in various jurisdictions. Other trademarks and logos mentioned are the properties of their respective owners.
Disclaimer
TO THE MAXIMUM EXTENT PERMITTED BY APPLICABLE LAW, THIS MANUAL AND THE PRODUCT DESCRIBED, WITH ITS HARDWARE, SOFTWARE AND FIRMWARE, ARE PROVIDED "AS IS" AND "WITH ALL FAULTS AND ERRORS". HIKVISION MAKES NO WARRANTIES, EXPRESS OR IMPLIED, INCLUDING WITHOUT LIMITATION, MERCHANTABILITY, SATISFACTORY QUALITY, OR FITNESS FOR A PARTICULAR PURPOSE. THE USE OF THE PRODUCT BY YOU IS AT YOUR OWN RISK. IN NO EVENT WILL HIKVISION BE LIABLE TO YOU FOR ANY SPECIAL, CONSEQUENTIAL, INCIDENTAL, OR INDIRECT DAMAGES, INCLUDING, AMONG OTHERS, DAMAGES FOR LOSS OF BUSINESS PROFITS, BUSINESS INTERRUPTION, OR LOSS OF DATA, CORRUPTION OF SYSTEMS, OR LOSS OF DOCUMENTATION, WHETHER BASED ON BREACH OF CONTRACT, TORT (INCLUDING NEGLIGENCE), PRODUCT LIABILITY, OR OTHERWISE, IN CONNECTION WITH THE USE OF THE PRODUCT. EVEN IF HIKVISION HAS BEEN ADVISED OF THE POSSIBILITY OF SUCH DAMAGES OR LOSS.
YOU ACKNOWLEDGE THAT THE NATURE OF THE INTERNET PROVIDES FOR INHERENT SECURITY RISKS, AND HIKVISION SHALL NOT TAKE ANY RESPONSIBILITIES FOR ABNORMAL OPERATION, PRIVACY LEAKAGE OR OTHER DAMAGES RESULTING FROM CYBER-ATTACK, HACKER ATTACK, VIRUS INFECTION, OR OTHER INTERNET SECURITY RISKS; HOWEVER, HIKVISION WILL PROVIDE TIMELY TECHNICAL SUPPORT IF REQUIRED.
YOU AGREE TO USE THIS PRODUCT IN COMPLIANCE WITH ALL APPLICABLE LAWS, AND YOU ARE SOLELY RESPONSIBLE FOR ENSURING THAT YOUR USE CONFORMS TO THE APPLICABLE LAW ESPECIALLY YOU ARE RESPONSIBLE FOR USING THIS PRODUCT IN A MANNER THAT DOES NOT INFRINGE ON THE RIGHTS OF THIRD PARTIES, INCLUDING WITHOUT LIMITATION, RIGHTS OF PUBLICITY, INTELLECTUAL PROPERTY RIGHTS, OR DATA PROTECTION AND OTHER PRIVACY RIGHTS. YOU SHALL NOT USE THIS PRODUCT FOR ANY PROHIBITED END-USES, INCLUDING THE DEVELOPMENT OR PRODUCTION OF WEAPONS OF MASS DESTRUCTION, THE DEVELOPMENT OR PRODUCTION OF CHEMICAL OR BIOLOGICAL WEAPONS, ANY ACTIVITIES IN THE CONTEXT RELATED TO ANY NUCLEAR EXPLOSIVE OR UNSAFE NUCLEAR FUEL CYCLE, OR IN SUPPORT OF HUMAN RIGHTS ABUSES, IN THE EVENT OF ANY CONFLICTS BETWEEN THIS MANUAL AND THE APPLICABLE LAW, THE LATER PREVAILS.
CE
This product and - if applicable - the supplied accessories too are marked with "CE" and comply therefore with the applicable harmonized European standards listed under the RE Directive 2014/53/EU, the EMC Directive 2014/30/EU, the RoHS Directive 2011/65/EU.
2012/19/EU (WEEE directive): Products marked with this symbol cannot be disposed of as unsorted municipal waste in the European Union. For proper recycling, return this product to your local supplier upon the purchase of equivalent new equipment, or dispose of it at designated collection points. For more information see: www.recyclethis.info
2006/66/EC (battery directive): This product contains a battery that cannot be disposed of as unsorted municipal waste in the European Union. See the product documentation for specific battery information. The battery is marked with this symbol, which may include lettering to indicate cadmium (Cd), lead (Pb), or mercury (Hg). For proper recycling, return the battery to your supplier or to a designated collection point. For more information see www.recyclethis.info
BATTERY CAUTION
Do not swallow the battery.
Keep new and used batteries away from the children.
If you think batteries might have been swallowed or placed inside any part of the body, seek immediate medical attention.
Risk of explosion if battery is replaced by an incorrect type.
Replacement of a battery with an incorrect type that can defeat a safeguard.
Dispose of used batteries according to the instructions and local regulation.
If the battery compartment does not close securely, stop using the product and keep it away from children.
INSTALLATION CAUTION
The additional force shall be equal to three times the weight of the equipment but not less than 50N. The equipment and its associated mounting means shall remain secure during the installation. After the installation, the equipment, including any associated mounting plate, shall not be damaged.

FC FCC Information
Please take attention that changes or modification not expressly approved by the party responsible for compliance could void the user's authority to operate the equipment.
This device complies with Part 15 of the FCC Rules. Operation is subject to the following two conditions:
(1) This device may not cause harmful interference, and
(2) This device must accept any interference received, including interference that may cause undesired operation.
This equipment complies with FCC radiation exposure limits set forth for an uncontrolled environment. This equipment should be installed and operated with minimum distance 20cm between the radiator & your body.