

**A Legal Statement**

©2021 Hangzhou HikAuto Technology Co., Ltd. All rights reserved.

**About this Manual**

The Manual includes instructions for using and managing the Product. Pictures, charts, images and all other information hereinafter are for description and explanation only. The information contained in the Manual is subject to change, without notice, due to firmware updates or other reasons.

**Trademarks**

- **HIKVISION** and other Hikvision's trademarks and logos are the properties of Hikvision in various jurisdictions.
- Other trademarks and logos mentioned are the properties of their respective owners.

**Disclaimer**

TO THE MAXIMUM EXTENT PERMITTED BY APPLICABLE LAW, THIS MANUAL AND THE PRODUCT DESCRIBED, WITH ITS HARDWARE, SOFTWARE AND FIRMWARE, ARE PROVIDED "AS IS" AND "WITH ALL FAULTS AND ERRORS". HIKAUTO MAKES NO WARRANTIES, EXPRESS OR IMPLIED, INCLUDING WITHOUT LIMITATION, MERCHANTABILITY, SATISFACTORY QUALITY, OR FITNESS FOR A PARTICULAR PURPOSE. THE USE OF THE PRODUCT BY YOU IS AT YOUR OWN RISK. IN NO EVENT WILL HIKAUTO BE LIABLE TO YOU FOR ANY SPECIAL, CONSEQUENTIAL, INCIDENTAL, OR INDIRECT DAMAGES, INCLUDING, AMONG OTHERS, DAMAGES FOR LOSS OF BUSINESS

**A Legal Statement**

PROFITS, BUSINESS INTERRUPTION, OR LOSS OF DATA, CORRUPTION OF SYSTEMS, OR LOSS OF DOCUMENTATION, WHETHER BASED ON BREACH OF CONTRACT, TORT (INCLUDING NEGLIGENCE), PRODUCT LIABILITY, OR OTHERWISE, IN CONNECTION WITH THE USE OF THE PRODUCT, EVEN IF HIKAUTO HAS BEEN ADVISED OF THE POSSIBILITY OF SUCH DAMAGES OR LOSS.

YOU ACKNOWLEDGE THAT THE NATURE OF INTERNET PROVIDES FOR INHERENT SECURITY RISKS, AND HIKAUTO SHALL NOT TAKE ANY RESPONSIBILITIES FOR ABNORMAL OPERATION, PRIVACY LEAKAGE OR OTHER DAMAGES RESULTING FROM CYBER-ATTACK, HACKER ATTACK, VIRUS INFECTION, OR OTHER INTERNET SECURITY RISKS; HOWEVER, HIKAUTO WILL PROVIDE TIMELY TECHNICAL SUPPORT IF REQUIRED.

YOU AGREE TO USE THIS PRODUCT IN COMPLIANCE WITH ALL APPLICABLE LAWS, AND YOU ARE SOLELY RESPONSIBLE FOR ENSURING THAT YOUR USE CONFORMS TO THE APPLICABLE LAW. ESPECIALLY, YOU ARE RESPONSIBLE, FOR USING THIS PRODUCT IN A MANNER THAT DOES NOT INFRINGE ON THE RIGHTS OF THIRD PARTIES, INCLUDING WITHOUT LIMITATION, RIGHTS OF PUBLICITY, INTELLECTUAL PROPERTY RIGHTS, OR DATA PROTECTION AND OTHER PRIVACY RIGHTS. YOU SHALL NOT USE THIS PRODUCT FOR ANY PROHIBITED END-USES, INCLUDING THE DEVELOPMENT OR PRODUCTION OF WEAPONS OF MASS DESTRUCTION, THE DEVELOPMENT OR PRODUCTION OF CHEMICAL OR BIOLOGICAL WEAPONS, ANY ACTIVITIES IN THE CONTEXT RELATED TO ANY NUCLEAR EXPLOSIVE OR UNSAFE NUCLEAR FUEL-CYCLE, OR IN SUPPORT OF HUMAN RIGHTS ABUSES.

IN THE EVENT OF ANY CONFLICTS BETWEEN THIS MANUAL AND THE APPLICABLE LAW, THE LATER PREVAILS.

**B Regulatory Information**

**FCC Information**

Please take attention that changes or modification not expressly approved by the party responsible for compliance could void the user's authority to operate the equipment.

**FCC compliance:** This equipment has been tested and found to comply with the limits for a Class B digital device, pursuant to part 15 of the FCC Rules. These limits are designed to provide reasonable protection against harmful interference when the equipment is operated in a residential environment. This equipment generates, uses and can radiate radio frequency energy and, if not installed and used in accordance with the instructions, may cause harmful interference to radio communications. However, there is no guarantee that interference will not occur in a particular installation. If this equipment does cause harmful interference to radio or television reception, which can be determined by turning the equipment off and on, the user is encouraged to try to correct the interference by one or more of the following measures:

- Reorient or relocate the receiving antenna.
- Increase the separation between the equipment and receiver.
- Connect the equipment into an outlet on a circuit different from that to which the receiver is connected.
- Consult the dealer or an experienced radio/TV technician for help

**FCC Conditions**

This device complies with part 15 of the FCC Rules. Operation is subject to the following two conditions:

1. This device may not cause harmful interference.
2. This device must accept any interference received, including interference that may cause undesired operation.

The equipment should be installed and operated with a minimum distance 20 cm between the radiator and your body.

**B Regulatory Information**

**EU Conformity Statement**

**CE** This product and - if applicable - the supplied accessories too are marked with "CE" and comply therefore with the applicable harmonized European standards listed under the RE Directive 2014/53/EU, the EMC Directive 2014/30/EU, the LVD Directive 2014/35/EU, the RoHS Directive 2011/65/EU.

2012/19/EU (WEEE directive): Products marked with this symbol cannot be disposed of as unsorted municipal waste in the European Union. For proper recycling, return this product to your local supplier upon the purchase of equivalent new equipment, or dispose of it at designated collection points. For more information see: [www.recyclethis.info](http://www.recyclethis.info).

2006/66/EC (battery directive): This product contains a battery that cannot be disposed of as unsorted municipal waste in the European Union. See the product documentation for specific battery information. The battery is marked with this symbol, which may include lettering to indicate cadmium (Cd), lead (Pb), or mercury (Hg). For proper recycling, return the battery to your supplier or to a designated collection point. For more information see: [www.recyclethis.info](http://www.recyclethis.info).

**Industry Canada ICES-003 Compliance**

This device meets the CAN ICES-3 (B)/NMB-3(B) standards requirements.

This device complies with Industry Canada licence-exempt RSS standard(s). Operation is subject to the following two conditions: (1) this device may not cause interference, and

**B Regulatory Information**

(2) this device must accept any interference, including interference that may cause undesired operation of the device. Le présent appareil est conforme aux CNR d'Industrie Canada applicables aux appareils radioexempts de licence. L'exploitation est autorisée aux deux conditions suivantes : (1) l'appareil ne doit pas produire de brouillage, et (2) l'utilisateur de l'appareil doit accepter tout brouillage radioélectrique subi, même si le brouillage est susceptible d'en compromettre le fonctionnement.

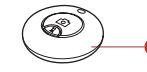
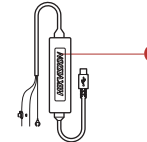
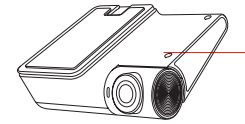
Under Industry Canada regulations, this radio transmitter may only operate using an antenna of a type and maximum (or lesser) gain approved for the transmitter by Industry Canada. To reduce potential radio interference to other users, the antenna type and its gain should be so chosen that the equivalent isotropically radiated power (e.i.r.p.) is not more than that necessary for successful communication.

Conformément à la réglementation d'Industrie Canada, le présent émetteur radio peut fonctionner avec une antenne d'un type et d'un gain maximal (ou inférieur) approuvé pour l'émetteur par Industrie Canada. Dans le but de réduire les risques de brouillage radioélectrique à l'intention des autres utilisateurs, il faut choisir le type d'antenne et son gain de sorte que la puissance isotrope rayonnée équivalente (p.i.r.e.) ne dépasse pas l'intensité nécessaire à l'établissement d'une communication satisfaisante.

This equipment should be installed and operated with a minimum distance 20cm between the radiator and your body. Cet équipement doit être installé et utilisé à une distance minimale de 20 cm entre le radiateur et votre corps.

**C Packing List**

1. Dashcam × 1
2. Katallobar × 1
3. TV Camera × 1
4. Bluetooth Remote Control × 1
5. Mini USB × 1
6. Electrostatic Film × 2
7. User Manual × 1
8. 3M Tape × 2



## D Parts Introduction

1. TF Card Slot  
Install TF card to record.

2. RESET Button  
Press RESET button during powering on to restart the device.

3. Parked Monitoring Indicator  
After turning off the vehicle, the indicator keeps red and the car is in the parked monitoring mode.

4. Camera

5. Mini USB Interface  
Access to 4G module/Data transmission

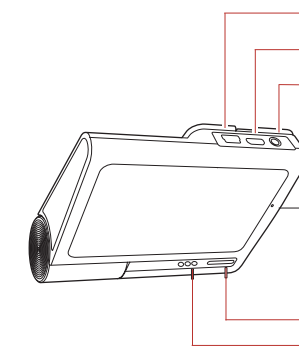
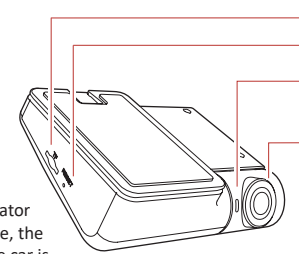
6. Micro USB Interface  
Access to electrostatic film for powering supply.

7. TVI Camera Interface

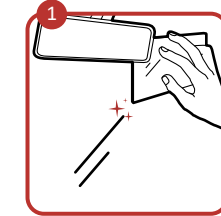
8. MIC  
Microphone

9. Power/Status Indicator  
It keeps red during powering on. It keeps blue when the device works properly.

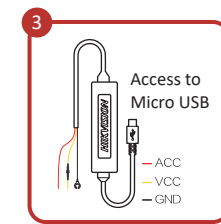
10. Audio Output



## E Installation



Clean the windshield and paste the electrostatic film onto it. Avoid introducing air bubble. DO NOT paste the film repeatedly.

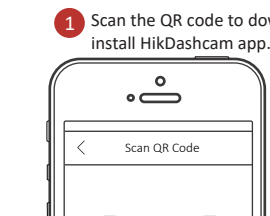


Connect the power cord as the figure above.

**i** (Optional) Install TVI camera and connect to the device according to specific manual. Slide the device along the arrow in step 4 to remove.

8

## F Mobile Phone Connection



Paste the device onto the electrostatic film and route cable to the disater box for power supply.



Dashcam Wi-Fi default parameters:  
• Wi-Fi SSID: HIKVISION-XXXX (XXXX refers to the last four characters of verification code.)  
• Wi-Fi password: 1234567890 (please edit password after logging in for the first time.)

9



2. Add the dashcam to the app.  
a. Run the HikDashcam app.  
b. Tap **Wi-Fi Connection**.  
c. In Wi-Fi list, select the Wi-Fi SSID of the target dashcam and enter Wi-Fi password to build connection.

**i** You can set the parameters of the dashcam.  
• For iOS, you need to go to Wi-Fi settings of your phone to connect to the Wi-Fi of dashcam.

3. Edit the dashcam password to activate it to avoid abnormal recording after connecting to Wi-Fi.

## G Basic Description

### Start Up

Connect the power cord to the car battery. Device starts recording automatically once the car started.

**i** When the car is off, device turns into parked monitoring mode and start to record once the current scene changed or collision happened.

### Bluetooth Remote Control

You can start recording and capturing via bluetooth remote control after connect to bluetooth.

Press the capture button to capture and save a picture.

Linkage Recording: Once enabled, a 12-second video involving 6 s before and 6 s after the capture will be saved.

Remote-Control Installation: it's suggested to install the remote control to where you can operate easily, such as the underside of steering wheel.

**i** Avoid the airbag when installing the remote control for your safety.

Device supports live view.

Slide horizontally to change the channel(with 2 cameras connected.)

• Slide down at the main page to turn on/off the Wi-Fi, bluetooth, GPS, speaker and recording.

• Tap the screen and slide left to display the main menu. You can check video, image or set parameters.

### Other Parameters

• Check the device and SW version at **System Settings -> About**.

• Set resolution at **Video Recording**.

• Turn on/off **WDR/Distortion Correction** in Image Parameter. It's suggested to open WDR when against the light.

• **Format SD Card**: Clear the data in the SD card.

• After **G-Sensor** enabled, device makes a video once the car has an emergent brake or turn.

10

## Set the Calibration Line

Adjust the calibration line to improve the veracity of ADAS.

Step1: Park the car to an open field.

Step2: Slide right to open the calibration interface

Step3: Adjust the angle of the lens make the calibration line coincide with the the horizon line.

### Update

• Option1: Through Hikdashcam APP

Step1: Power on the device and open Wi-Fi to connect the APP.

Step2: Check the latest SW version in the APP.

Step3: Choose **System Settings -> SW Update** to start update.

Step4: Device restarts once the firmware started.

• Option2: Connect the device to 4G network, device detects the latest SW version. You can download and update accordingly. (It needs to compatible with 4G module).

### Specifications

Model	AE-DC8322-G2PRO
Aperture	F1.75
Pixel	2160P (3840*2160); 1080P (1920*1080)
Max. Resolution	2160P @ 25fps
Angle	Horizontal: 113°, Diagonal: 135°
Screen	3"
Storage	EMMC + TF card, EMMC: 64G/128G/256G TF Card: 32 GB to 128 GB
G-Sensor	Built-in, collision triggered recording and recording lock
Wi-Fi	Yes
Sound Recording	Yes
Power Supply	5 VDC, 2 A
Power Consumption	Approx. 6 W
Operating Temperature and Humidity	-20 °C to 65 °C (-4 °F to 158 °F). Humidity 95% or less.
Installation Type	General
Dimensions (L × W × H)	100 × 85 × 38 mm (3.6" × 3.5" × 2.8")
Weight	Approx. 150 g (0.25 lb.)

11

## H Cautions

### Tips for Dashcam

• Use the original power cord in the package for power supply.

• Dashcam supports to record and save vehicle accident recordings, but doesn't guarantee to record all the accidents.

• Operate the dashcam in accordance with the local regulations and laws.

• Save the user manual properly for future reference.

• In case the dashcam is directly connected with the automobile power system, you are recommended to power off the dashcam when the automobile is off.

• Working temperature: [-20°C, +65°C] ([-4°F, 149°F]). To protect the dashcam, do not use it in high-humidity and high-dust density environment and keep all liquids away from it.

• The user manual is subject to the dashcam update.

### Tips for TF Card

• For the stability and efficiency of data storage, Please purchase TF cards from official channels. It is recommended to use a high-speed TF card of class 10 or above, and its capacity should be no less than 16 G.

• Shut down the device before installing and uninstalling the TF card.

• It is recommended to format the TF card once a month.

• Please replace the TF card regularly to avoid the TF card exceeding its service life and unable to store data.

12

## I Troubleshooting

Trouble	Solution
The dashcam drops easily.	• Clean the windshield before installation. • <b>Check whether the 3M tape is tightly stuck to the electrostatic film before the installation.</b>
Starting the dashcam failed.	• Check whether the vehicle is started and power supply is normal. • Check whether the car charger is tightly connected. • Restore to defaults: hold the <b>RESET</b> button until the startup music is heard.
The dashcam powers off easily.	• Make sure the power cord is in good condition. • Make sure the power cord is tightly connected to the according interfaces.
Recording is abnormal and indicator is unlit.	• Make sure that the dashcam started up successfully. • Check whether the TF card is inserted. • Check the status of TF card, e.g. its format, its lifespan. • Change TF card if it is not well.
Recording is blurred.	• Make sure the protective film is peeled off. • Check whether the windshield or the lens of dashcam is blurred.
Recording is mute.	• Set audio settings on the device or turn on sound recording in HikDashcam app. • Turn on sound through the the audio control function of the dashcam.
Dashcam reboots itself.	• Check whether the car charger is tightly connected. • Check whether the car charger is equipped with power supply interface of 5 VDC, ≥ 2 A.
Mobile phone cannot connect to dashcam.	• Make sure HikDashcam app is installed. • Please restart the dashcam to the app.

13

## H Troubleshooting

Trouble	Solution
The mobile phone cannot display recordings.	• It may be relevant with the player or system of the phone. Please connect TF card to your computer and display the recordings.
TF card is not detected when you connect dashcam to computer with the supplied power cord.	• Dashcam does not support data transmission and the supplied power cord is only for charging. • If you need to transfer data, please connect TF card to your computer.
Wi-Fi connection takes a long time.	• It may be caused by the interference of the surrounding Wi-Fi signals. Please use the dashcam in an environment of less interference. • Shut down unnecessary programs in your phone to release some resources for HikDashcam app and reconnect Wi-Fi.
Dashcam Wi-Fi password is forgotten.	• The default password is 1234567890. If you have revised the password, regain the password by the following steps. 1. Hold the <b>RESET</b> button on dashcam until the startup music is heard and the dashcam is restored to defaults. 2. Go to Wi-Fi Connection interface in HikDashcam app. 3. Select Wi-Fi SSID and log in with default password 1234567890.
No GPS signal.	• Check whether the GPS function is enabled. Normally, the GPS function is enabled by default. • Make sure the device is not in the places of weak signal or no signal, such as underground garage. • Make sure there is no metal around the device because metal will interfere with GPS signal. • Make sure the location where the device is installed is not pasted with radiation protection film. The film will interfere with GPS signal.

14

7