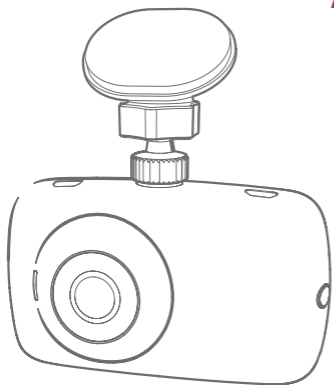


**HIKVISION**



## Dashcam User Manual



Download App  
(iOS User)



Download App  
(Android User)

## **A** Regulatory Information

### FCC Information

Please take attention that changes or modification not expressly approved by the party responsible for compliance could void the user's authority to operate the equipment.

**FCC compliance:** This equipment has been tested and found to comply with the limits for a Class B digital device , pursuant to part 15 of the FCC Rules. These limits are designed to provide reasonable protection against harmful interference in a residential installation. This equipment generates, uses and can radiate radio frequency energy and, if not installed and used in accordance with the instructions, may cause harmful interference to radio communications. However, there is no guarantee that interference will not occur in a particular installation. If this equipment does cause harmful interference to radio or television reception, which can be determined by turning the equipment off and on, the user is encouraged to try to correct the interference by one or more of the following measures:

- Reorient or relocate the receiving antenna.
- Increase the separation between the equipment and receiver.
- Connect the equipment into an outlet on a circuit different from that to which the receiver is connected.
- Consult the dealer or an experienced radio/TV technician for help.

This equipment should be installed and operated with a minimum distance 20cm between the radiator and your body.


## **A** Regulatory Information

### **FCC Conditions**

This device complies with part 15 of the FCC Rules. Operation is subject to the following two conditions:

1. This device may not cause harmful interference.
2. This device must accept any interference received, including interference that may cause undesired operation.

### **EU Conformity Statement**

	This product and - if applicable - the supplied accessories too are marked with "CE" and comply therefore with the applicable harmonized European standards listed under the RE Directive 2014/53/EU, the EMC Directive 2014/30/EU, the LVD Directive 2014/35/EU, the RoHS Directive 2011/65/EU
	2012/19/EU (WEEE directive): Products marked with this symbol cannot be disposed of as unsorted municipal waste in the European Union. For proper recycling, return this product to your local supplier upon the purchase of equivalent new equipment, or dispose of it at designated collection points. For more information see: <a href="http://www.recyclethis.info">www.recyclethis.info</a>

## **A** Regulatory Information



The power supply must conform to LPS. The recommended adaptor model is C10, whose manufacturer is Dongguan NB Power Electronic Limited. Use this kind of adaptor, and do not change the adaptor randomly.

## Industry Canada ICES-003 Compliance

This device meets the CAN ICES-3 (B)/NMB-3(B) standards requirements.

This device complies with Industry Canada licence-exempt RSS standard(s). Operation is subject to the following two conditions:

- (1) this device may not cause interference, and
- (2) this device must accept any interference, including interference that may cause undesired operation of the device.

Le présent appareil est conforme aux CNR d'Industrie Canada applicables aux appareils radioexempts de licence. L'exploitation est autorisée aux deux conditions suivantes :

- (1) l'appareil ne doit pas produire de brouillage, et
- (2) l'utilisateur de l'appareil doit accepter tout brouillage radioélectrique subi, même si le brouillage est susceptible d'en compromettre le fonctionnement.

Under Industry Canada regulations, this radio transmitter may only operate using an antenna of a type and maximum (or lesser) gain approved for the transmitter by Industry Canada. To reduce

## **A** Regulatory Information

potential radio interference to other users, the antenna type and its gain should be so chosen that the equivalent isotropically radiated power (e.i.r.p.) is not more than that necessary for successful communication.

Conformément à la réglementation d'Industrie Canada, le présent émetteur radio peut

fonctionner avec une antenne d'un type et d'un gain maximal (ou inférieur) approuvé pour l'émetteur par Industrie Canada. Dans le but de réduire les risques de brouillage radioélectrique à l'intention des autres utilisateurs, il faut choisir le type d'antenne et son gain de sorte que la puissance isotrope rayonnée équivalente (p.i.r.e.) ne dépasse pas l'intensité nécessaire à l'établissement d'une communication satisfaisante.

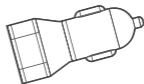
This equipment should be installed and operated with a minimum distance 20cm between the radiator and your body.

Cet équipement doit être installé et utilisé à une distance minimale de 20 cm entre le radiateur et votre corps.

## **B** Packing List



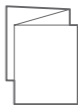
- Camera × 1



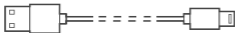
- Cigarette Lighter × 1



- Electrostatic Protective Film x2



- User Manual × 1



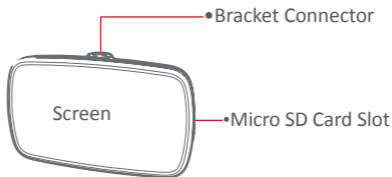
- Power Cord × 1



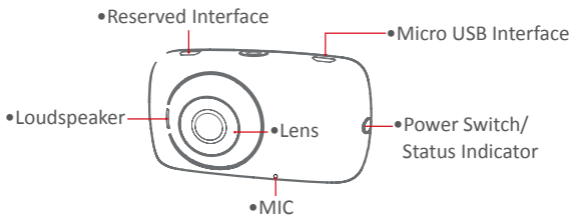
You should connect the bracket and the dachcam by yourself.

## **C** Camera Description

### • Front View

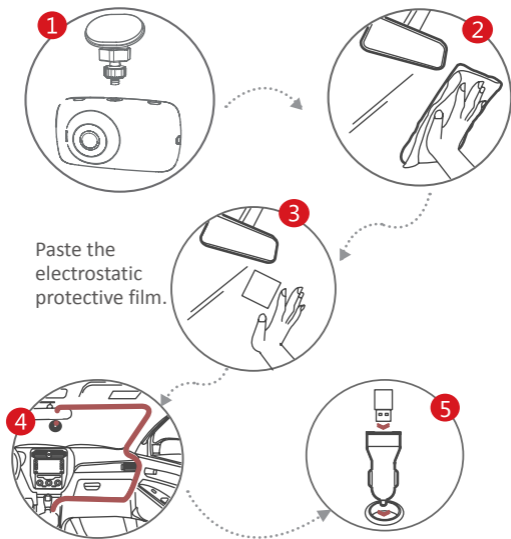


### • Rear View



- Solid Blue: The dashcam is recording.
- Flashing red: Recording is abnormal. Check the micro SD card.

## D Installation





## E Mobile Phone Connection

1

Scan the QR code to download the HikDashcam app.



For iOS User



For Android User

2

Add the dashcam in app by connecting with its Wi-Fi.

1. Run the HikDashcam app.
2. In Wi-Fi list, select the Wi-Fi name of target dashcam and enter Wi-Fi password to build connection.

i

Dashcam Wi-Fi default parameters:

- Wi-Fi name: HIKVISION-XXXX (XXXX refers to the last four characters of verification code.)
- Wi-Fi password: 1234567890

## F Operation

### Power on and Power off

1. Insert the cigarette lighter into the receptacle in automobile.
2. The dashcam powers on once the automobile starts up and powers off once the automobile flameouts.



For automobiles with constant electric power supply, pull the cigarette lighter out of the receptacle to power off dashcam.

### Recording

The dashcam starts recording automatically after inserting Micro SD card.

Two recording types are provided: Normal Recording (●) and Emergency Recording (🔒).

### Wi-Fi

- Slide downwards and tap the Wi-Fi switch to enable Wi-Fi.
- Tap **System** -> **Wi-Fi** to enable Wi-Fi.



The default Wi-Fi password is 1234567890

## F Operation

### Playback

Tap **Photo** on the main menu to view photos and playing recordings.

### Date and Time

- Tap **System** -> **Date** on the main menu to set the date.
- Tap **System** -> **Time** on the main menu to set the time.

### Screen Saver

Tap **System** -> **Screen Saver** on the main menu to set the screen saver duration.

### Others

- **System:** you can format Micro SD card, set the sensitivity, restore defaults, and so on.
- **Video:** you can set the video standard, resolution, and recording duration, and so on.

## **H**Preventions and Cautionary Tips

### Tips for Dashcam

- Operate the dashcam in accordance with the local regulations and laws.
- Save the user manual properly for future reference.
- To ensure data is safe and stable, install a micro SD card bought from formal channel. It is recommended to use a high-speed micro SD card of class 10 and above.
- To protect micro SD card from damage, shut down the dashcam before installing and uninstalling micro SD card.
- In case the dashcam is directly connected with the automobile power system, you are recommended to power off the dashcam when the automobile is off.
- Working temperature: [-20 °C, +70 °C] ([-4 °F, 158 °F]). To protect the dashcam, do not use it in high-humidity and high-dust density environment and keep all liquids away from it.
- The manual is subject to dashcam update.

## I Troubleshooting

Trouble	Solution
The dashcam drops easily.	<ul style="list-style-type: none"><li>• Clean the glass before installation.</li></ul>
Starting dashcam failed.	<ul style="list-style-type: none"><li>• Ensure the automobile started normally.</li><li>• If no indicator is lighting, reconnect the the vehicle charger.</li></ul>
The dashcam powers off frequently.	<ul style="list-style-type: none"><li>• Ensure the power cord is well.</li><li>• Ensure the connection between the dashcam and the power cord is well.</li></ul>
Recording is abnormal, and recording indicator is unlit.	<ul style="list-style-type: none"><li>• Ensure the dashcam started normally.</li><li>• Ensure micro SD card is installed.</li><li>• Check micro SD card status, e.g., its format and lifespan. If it is not well, replace it with a good one.</li></ul>
Recorded videos are fuzzy.	<ul style="list-style-type: none"><li>• Tear off the proof film on lens.</li><li>• Clean the lens and glass.</li></ul>

## I Trouble Shooting

Trouble	Solution
Audio is not recorded with the video.	<ul style="list-style-type: none"><li>• Enable <b>Tape When Recording</b> in App.</li></ul>
Connecting the dashcam via App failed.	<ul style="list-style-type: none"><li>• Ensure the App is well installed.</li><li>• Restart the App and the dashcam.</li></ul>
Playing the video via App failed.	The trouble may be relevant with the mobile phone player or system. Insert the micro SD card into your computer and play the videos.
Failed to detect the micro SD card when connecting the dashcam and your computer with the power cord.	The dashcam does not support data transmission. And the power cord is only for charging. If you need to transfer data, take out the SD card and connect it to your computer.
It takes a long time to connect the dashcam Wi-Fi.	<ul style="list-style-type: none"><li>• It may be caused by the interference of the surrounding Wi-Fi signals. You can operate the dashcam in an environment with less interference.</li><li>• Close unnecessary programs in your mobile phone to release some resources for the dashcam App.</li></ul>