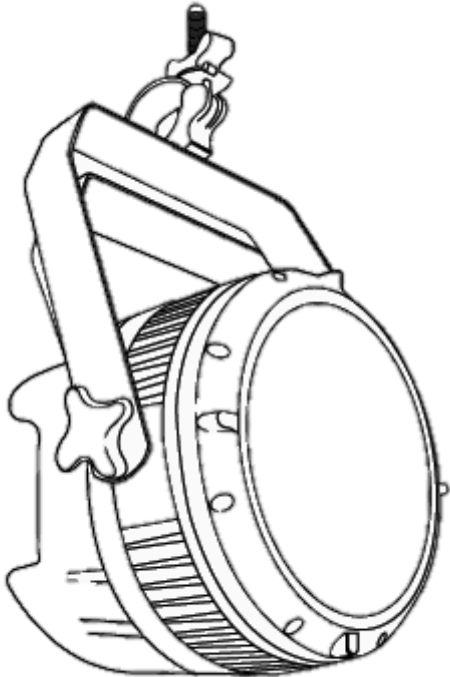


WASH 3.5 VS WASH 3.0

Version 1.0, 21-02-2019



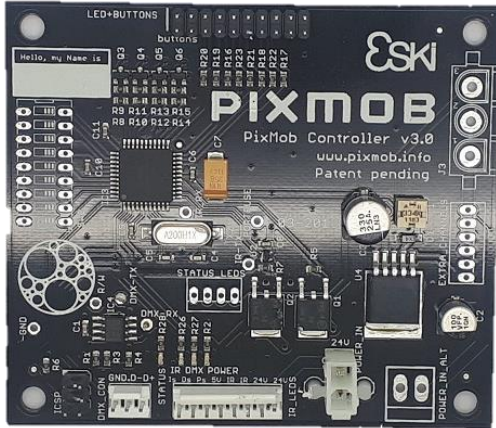
Contents

- 1.0 Controller.....3**
- 2.0 Driver-Filter.....4**
- 3.0 Emitter.....5**
- 4.0 PSU.....6**
- 5.0 WASH casing.....7**
- 6.0 LABEL.....9**

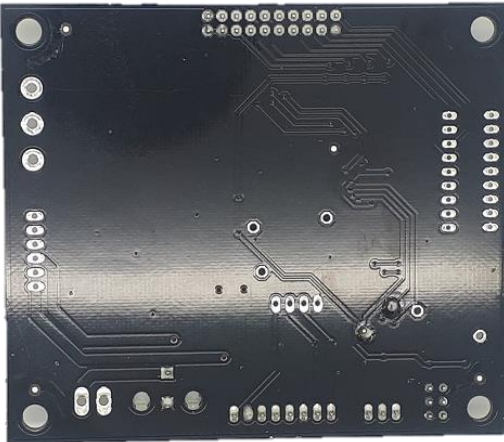
1.0 Controller

WASH 3.0

TOP

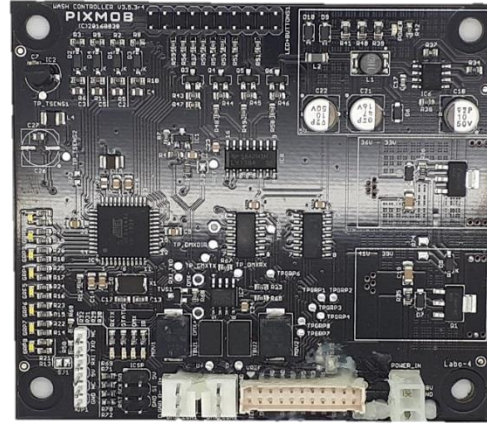


BOTTOM

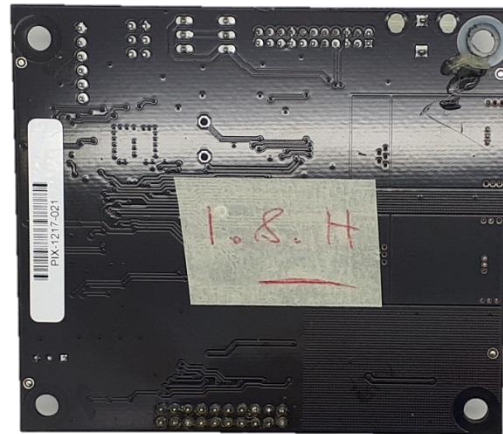


WASH 3.5

TOP



BOTTOM



Note:

The Controllers are pretty the same. They have the same micro-controller (Atmega644) and same crystal (20Mhz). The only differences between them is a better electronics debounce, better signal filter and a better DC-DC converter for the WASH 3.5. This is the same DMX signal input in both of them.

2.0 Driver-Filter

WASH 3.0

TOP

There is no driver-filter on WASH 3.0

BOTTOM

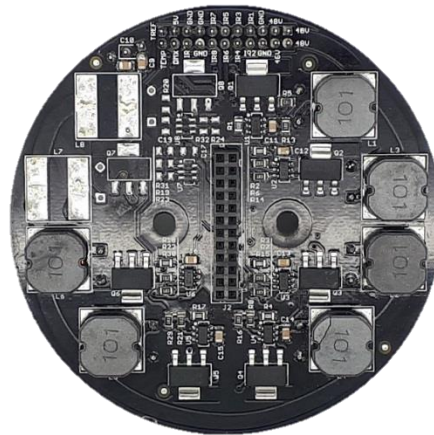
There is no driver-filter on WASH 3.0

WASH 3.5

TOP



BOTTOM



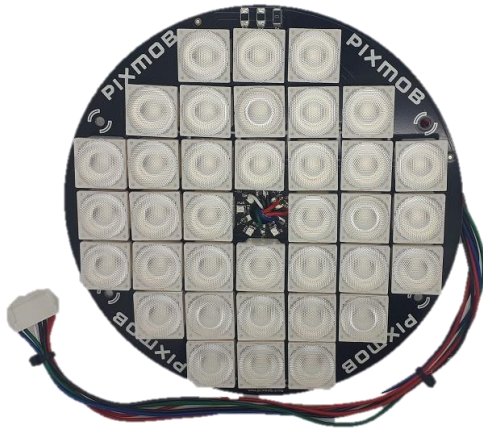
Note:

There is no driver-filter on the WASH 3.0 because it is less powerful (less IR LED) than the WASH 3.5.

3.0 Emitter

WASH 3.0

TOP

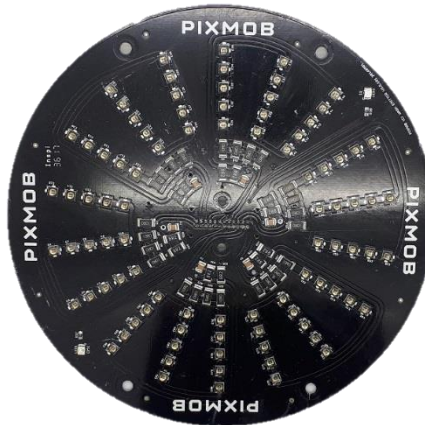


BOTTOM

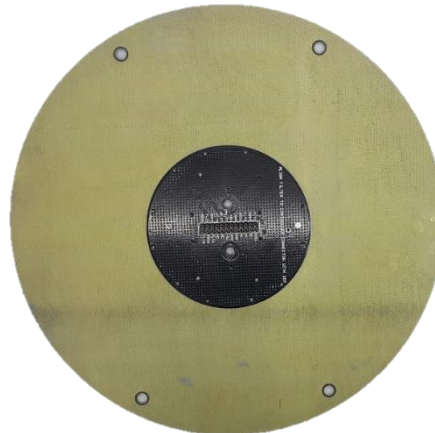


WASH 3.5

TOP



BOTTOM



Note:

-The WASH 3.0 has 36 IR LEDs (SFH4233) and the WASH 3.5 has 90 IR LEDs (SFH4725S) with a better heatsink.

4.0 PSU

WASH 3.0

TOP



BOTTOM

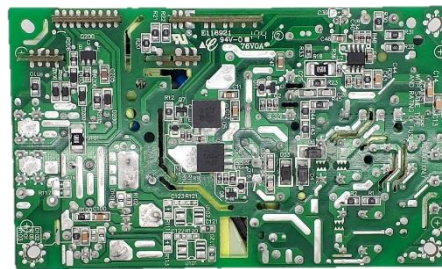


WASH 3.5

TOP



BOTTOM



Note:

The power supplies are different because the number of IR LED is different. The Wash 3.0 uses the RS-75-24 that has an output of 24V and the WASH 3.5 uses the RPS-300-48 that has an output of 48V.

5.0 WASH casing

WASH 3.0

WASH 3.5





Note:

The casing and cables connectors are the same on both WASH 3.0 and WASH 3.5.

6.0 LABEL

WASH 3.0



WASH 3.5



Note:

The labels are placed at the same place on both casing. Only the ID and the model change on the label.