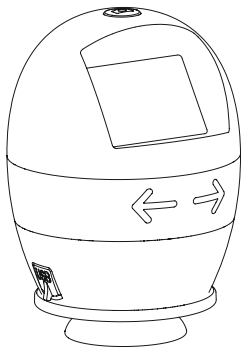


Easi-Scope Visual

Instruction Manual



CONTENTS

BEFORE USE 4

Important information	4
Care and maintenance	4
Warning	4
Product description	5
Computer requirements	5

PRODUCT AT A GLANCE 6

Package contents	6
Product overview	7
Product specification	7

GETTING STARTED 8

Charging	8
Assembling the product	8
Turning on the device	9
Focusing	9
Capturing	10
Turning off the device	10
Wi-Fi On/Off	10

INSTALLING THE SMARTPHONE APP 11

USING THE XPLOVIEW APP WITH A SMARTPHONE 11

Connecting the device	11
-----------------------	----

Open the xploview app	12
Button menu	13
System settings menu	14
Deleting an item	15

USING THE XPLOVIEW SOFTWARE WITH A COMPUTER 17

Connecting the device	17
Starting the xploview software	17
Selecting the device in the xploview software	18
Button menu	19
Full screen viewing	20
Image rotation / flip	21
System settings menu	22
Device setup	23
Timed shot setup	23
Movie setup	23
Save setting	24
Language setting	24
Advanced settings	24
Saved files	26
Uninstalling the xploview software	26

BEFORE USE

Important information

Please read this instruction manual carefully before using this product, and retain this instruction for future reference.

Improvements and changes to this text necessitated by typographical errors, or improvements to the software and / or equipments may be made at any time without notice.

Care and maintenance

- Avoid vibration, shock and pressure e.g. dropping the microscope.
- Keep the device dry and protect it from water or vapour.
- Do not leave your device in a place with extreme high or low temperature.
- Do not touch the device with a wet hand as it may damage the device, or cause an electric shock to the user.
- Do not use or store the device in dusty, dirty areas as its moving parts may be damaged.
- Do not use harsh chemicals, cleaning solvents or strong detergents to clean the device. Wipe it with a soft cloth slightly dampened in a mild soap-and-water solution.

Warning

- Do not place lighted wireless microscope upon the eye, doing so may cause permanent eye damage.
- Do not attempt to open or dismantle the wireless microscope.

Product description

This wireless microscope features a 640 x 480 CMOS sensor and can be paired with up to 2 Wi-Fi enabled devices within a 10m range. It is compatible with most Android, IOS, Windows and Mac OS devices.

Simply connect the device to the wireless microscope's WLAN access point to start viewing, capturing and recording live images.

Computer requirements

Smartphone (Android and IOS)

WLAN

Wi-Fi 802.11 b / g / n

Windows based PC

Compatible operating systems

Windows 10 (32 bit or 64 bit)
Windows 8 (32 bit or 64 bit)
Windows 7 (32 bit or 64 bit)

WLAN

Wi-Fi 802.11 b / g / n

Mac OS based PC

Compatible operating systems

Mac OS X 10.5.6 - Mac OS X 10.15.x

WLAN

Wi-Fi 802.11 b / g / n

PRODUCT AT A GLANCE

Package contents

Wireless microscope



Adaptor



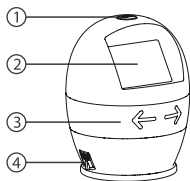
USB cable



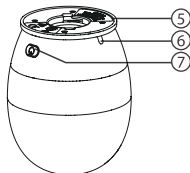
User manual



Product overview



- 1. Capture button
- 2. 2" LCD Display
- 3. Focusing ring
- 4. USB port



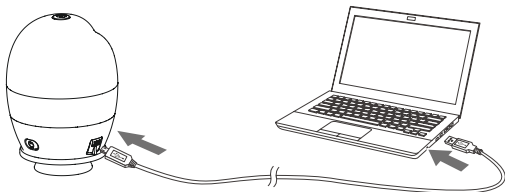
- 5. Adaptor slot
- 6. Indication light
- 7. Power button

Product specification

Connection type	802.11 b / g / n
Effective magnifications (on a 17" monitor)	75x
Effective magnifications (on a 2" LCD Display)	9x
Effective viewing area	4.3 x 3.2 mm
Illumination	Four LEDs
Sensor	CMOS
Size	ø82 x 105 mm
Weight	175 grams

GETTING STARTED

Charging

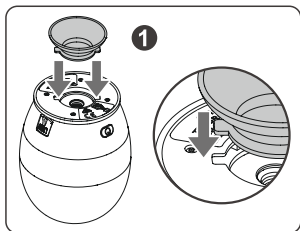


Charge the wireless microscope before using it.

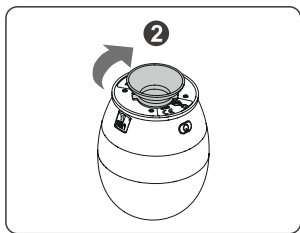
Connect the wireless microscope to a computer with the USB cable provided.

Status	Indication light colour
Charging	Red
Charged	Green

Assembling the product

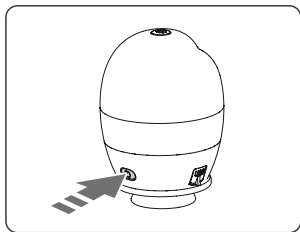


Insert the adaptor into the adaptor slot.



Fasten the adaptor by turning it gently in the clockwise direction.

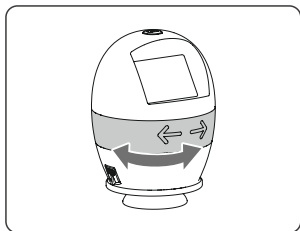
Turning on the device



Press and hold the power button for 2 seconds.

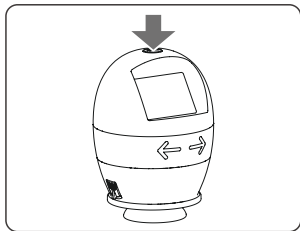
LCD display and green indicator light will turn on.

Focusing



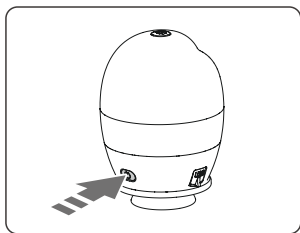
Adjust the focus of the image manually by rotating the focusing ring.

Capturing (Only available when connected via Wi-Fi)



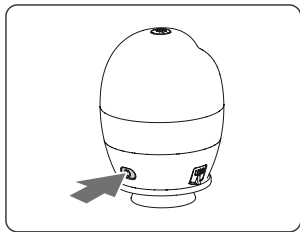
Press the image capture button to capture an image.

Turning off the device



Press and hold the power button for 2 seconds to turn off the device.

Wi-Fi On/Off



Short press power button to turn the Wi-Fi on or off. A Wi-Fi symbol will appear on top right corner of the screen when Wi-Fi is turned on.

INSTALLING THE SMARTPHONE APP

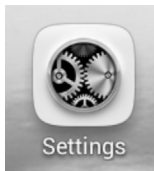


Search for "xploview" on Play Store or App Store on your mobile device and install the app.

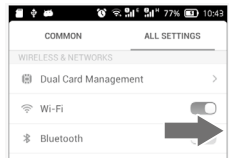
USING THE XPLOVIEW APP ON A SMARTPHONE

Connecting the device

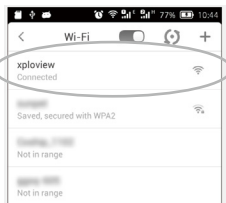
Turn on the wireless microscope (see P.9).



Go to "Settings".



Turn on Wi-Fi connection.



Search for and connect to "xploview_xxxxxx" under the list of available devices. ("xxxxxx" is a 6 digit code unique to your device.)

The default password of the device is 12345678.

Open the xploview app



Note

The performance of the device may be affected in an environment crowded by Wi-Fi signal.

User may experience a delay in real-time image display depending on the speed of the Smartphone processor.

Button menu

The icons on the button menu:



Enter Image / Video playback mode

Picture

Picture playback

Video

Video playback



Capture on screen image



Enter Video mode



Start video recording



Pause video recording

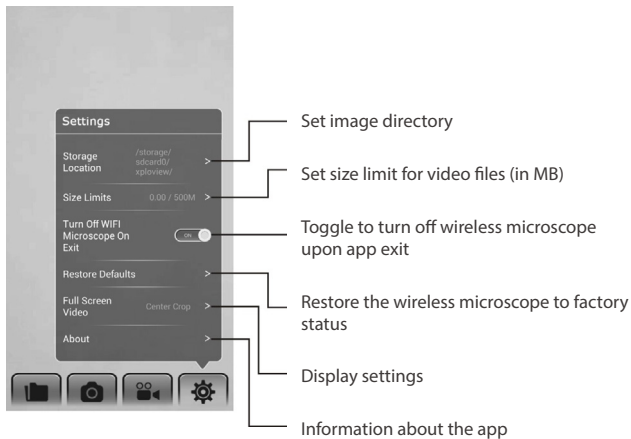


End video recording

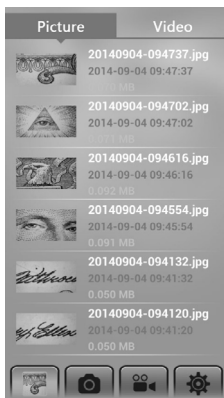


Open System Settings Menu (see system settings menu on page 14)

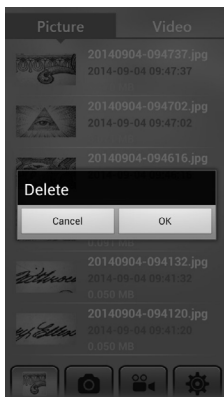
System settings menu



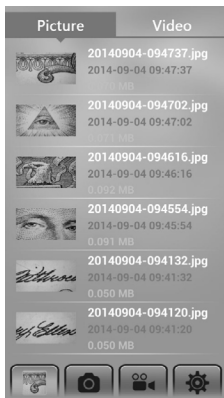
Deleting an item



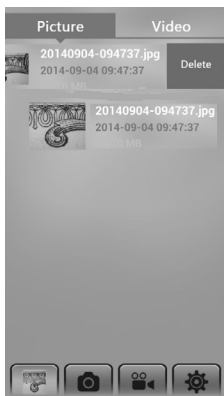
Android:
Press and hold an item for 2 seconds.



Tab "OK" to confirm.



IOS:
Swipe the item to the left.



Tab "Delete" to confirm.

USING THE XPLOVIEW SOFTWARE ON A COMPUTER

Connecting the device


Turn on / connect the WiFi adaptor in the Windows or Mac operating system.

Search for and connect to "xplovview_XXXXXX" under the list of available wireless networks. ("XXXXXX" is a 6 digit code unique to your device.)


The default password of the device is 12345678.

Starting the xplovview software

Windows based PC

The xplovview software can be launched by double clicking the xplovview icon <  > from the desktop, or from the start menu.

Mac OS based PC

The xplovview software can be launched by double clicking the xplovview icon <  > from the Applications menu.

Selecting the device in the xploview software

From the "Device" drop-down menu under the "System Settings" menu, choose "xploview Wireless" and click the "Connect" button and click "Apply".



Button menu

The icons on the button menu :



Open **System Settings Menu** (see system settings menu on page23).



Capture on screen image.



To start and to stop **Timed Shot**. Images will be captured at a regular interval (see system settings menu on page 24 to adjust frequency and duration).



To start and to stop **Video Recording**.




Information of the application software. This information maybe helpful when updating software.



Shut down the application software.

Full screen viewing

To activate the full screen mode, click the full screen button  located on the bottom right corner of the xplovview application software window.

To exit full screen mode, either double click on the screen, or press the "Esc" button on the keyboard.

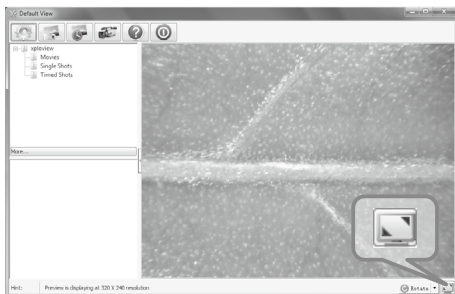
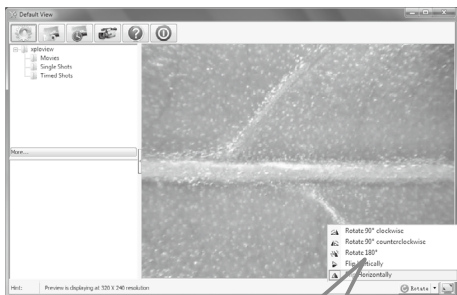





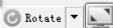


Image rotation / flip

Click <  Rotate > button to rotate or preview screen.



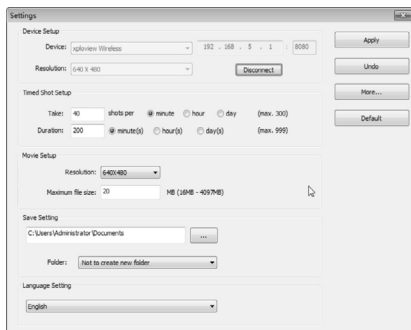
-  Rotate 90° clockwise
-  Rotate 90° counterclockwise
-  Rotate 180°
-  Flip Vertically
-  Flip Horizontally



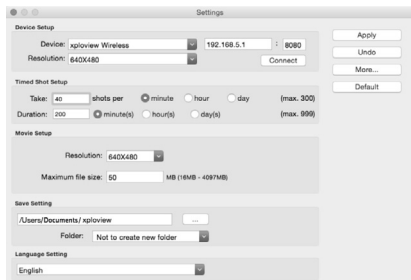
System settings menu

The first time the xploview software is started, the default settings will be loaded, you may change these settings manually in the system settings menu.

Windows based PC



Mac OS based PC



Device setup

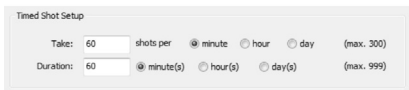
If the image captured by the wireless microscope was not displayed by default, you can change this by selecting "xploview wireless" from the "Device" drop-down menu and click "Connect".



The "Device Setup" dialog box contains two dropdown menus. The first menu, labeled "Device:", has "xploview Wireless" selected. The second menu, labeled "Resolution:", has "640 X 480" selected.

Timed shot setup

The frequency and duration of automatic images capture can be adjusted under this option.



The "Timed Shot Setup" dialog box has two rows of controls. The first row is for "Take:" with a value of "60" and "shots per" followed by three radio buttons: "minute" (selected), "hour", and "day", with a "(max. 300)" limit. The second row is for "Duration:" with a value of "60" and three radio buttons: "minute(s)" (selected), "hour(s)", and "day(s)", with a "(max. 999)" limit.

Movie setup

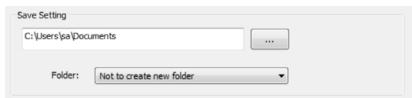
The resolution of videos you record can be changed from the "Resolution" menu. You can also set a maximum file size for each video.



The "Movie Setup" dialog box contains two controls. The first is a dropdown menu labeled "Resolution:" with "640X480" selected. The second is a text input field labeled "Maximum file size:" with the value "50" and the unit "MB (16MB - 4097MB)" to its right.

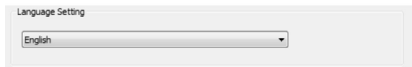
Save setting

The default location for captured images or videos can be changed under this option.



Language setting

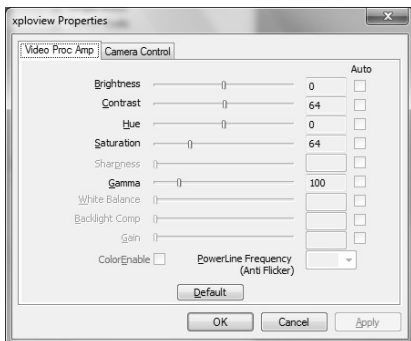
The language of the xploview software can be changed under this option.



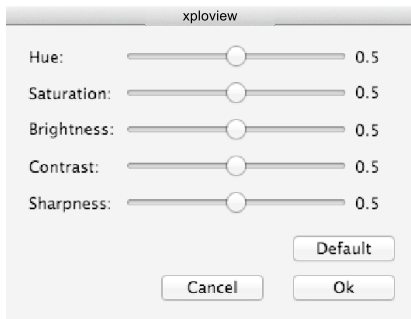
Advanced settings

By clicking the "More..." button on the right of the system settings menu, you will be able to manually adjust all of the image settings. Note that the settings available may be different, depending on your operating system.

Windows based PC

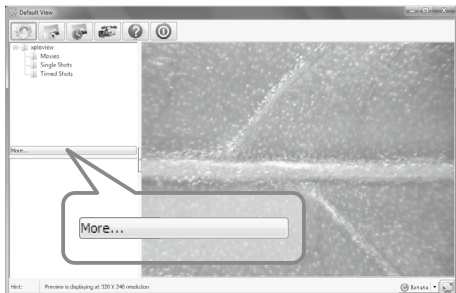


Mac OS based PC



Saved files

With the xploview application software opened, you can locate the saved files folder by clicking the "More..." button located on the left of the main software window.



Uninstalling the xploview software

Windows based PC

Select "Uninstall xploview" from the start menu (Start > All Programs > xploview wireless > Uninstall xploview).

Mac OS based PC

Drag the xploview wireless application icon from the "Applications" folder to "Trash".

FCC compliance statement (United States only)

This device complies with part 15 of the FCC Rules. Operation is subject to the following two conditions: (1) This device may not cause harmful interference, and (2) this device must accept any interference received, including interference that may cause undesired operation.

Changes or modifications not expressly approved by the party responsible for compliance could void the user's authority to operate this device.

This device has been tested and found to comply with the limits for a Class B digital device, pursuant to part 15 of the FCC Rules. These limits are designed to provide reasonable protection against harmful interference in a residential installation. This device generates, uses and can radiate radio frequency energy and, if not installed and used in accordance with the instructions, may cause harmful interference to radio communications. However, there is no guarantee that interference will not occur in a particular installation. If this device does cause harmful interference to radio or television reception, which can be determined by turning the equipment off and on, the user is encouraged to try to correct the interference by one or more of the following measures:

- Reorient or relocate the receiving antenna.
- Increase the separation between the equipment and receiver.
- Connect the device into an outlet on a circuit different from that to which the receiver is connected.
- Consult the dealer or an experienced radio / TV technician for help.

This equipment complies with FCC radiation exposure limits set forth for an uncontrolled environment. This equipment should be installed and operated with minimum distance 20cm between the radiator & your body.

Legal information

This document is published without any warranty. While the information provided is believed to be accurate, it may include errors or inaccuracies. In no event shall the manufacturer or its distributors be liable for incidental or consequential damages of any nature, including but not limited to loss of profits or commercial loss, arising out of the use of the information in this document.

All rights reserved. Mac, Mac OS and OS X are trademarks of Apple Inc., registered in the U.S. and other countries. Windows is a registered trademark of Microsoft Corporation in the United States and other countries. All other trademarks and brands are property of their respective owners.

Warranty & Support

This product is provided with a one year warranty for problems found during normal usage. Mistreating the Easi-Scope Wireless or opening the unit will invalidate this warranty.

All out of warranty repairs will be subject to a replacement fee.

Technical Support

Please visit www.tts-group.co.uk for the latest product information.

Email feedback@tts-group.co.uk for technical support.

TTS Group Ltd.
Park Lane Business Park
Kirkby-in-Ashfield
Nottinghamshire,
NG17 9GU, UK.
Freephone: 0800 318686 Freefax: 0800 137525

TTS is proud to be part of **RM** plc

Easi-Scope Visual™

WARNING: Do not dispose of this product in household waste. Hand it over to a collection point for recycling electronic appliances.

TTS Product Code:
SC10202

