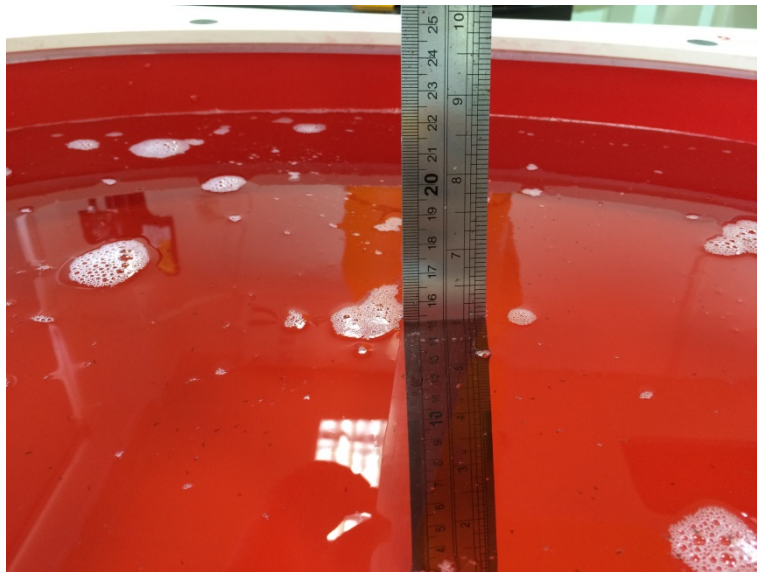
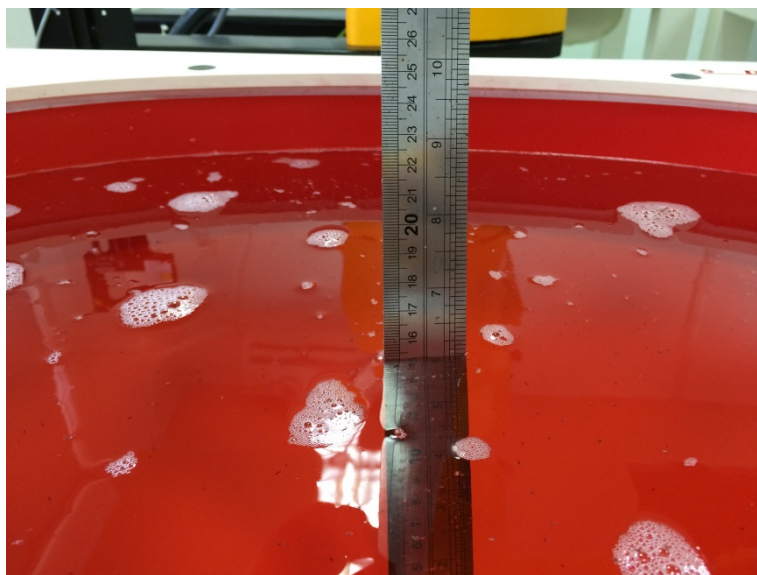


1. Test Setup Photos



Photograph of the depth in the Head Phantom (150MHz)



Photograph of the depth in the Body Phantom (150MHz)



Face-held, the front of the EUT towards phantom (The distance was 25mm)



**Body-worn, the front of the EUT towards ground with A1, B1, BC1 and AC1
(The distance was 0mm)**

2. External Photos of the EUT and Accessory

External Photos



B1- Battery, Li-ion Battery Pack (BL1)



A1- External Antenna



BC1- Belt clip



AC1- Audio Accessories QHEM10506S two way radio (walkie talkie) accessories cheapest Plastic arranger kit.

