

- **Wireless control Feature**
 - **Applicable system: iOS, Android**
 - Please keep your APP up to date with the latest version.
 - Due to special situation may be occurred, we explicitly claims below: Not all of the Android and iOS system are compatible with APP. We will not be responsible for any issue as a result of the incompatibility.
 - **Wireless safety strategy**
 - Smart kit only support WPA-PSK/WPA2-PSK encryption and none encryption.
 - WPA-PSK/WPA2-PSK encryption is recommended.
- **CAUTIONS:**
 - Due to different network situation, control process may return time-out sometimes. If this situation occurs, the display between board and APP maynot be the same, please do not feel confused.
 - Smart Phone camera needs to be 5 million pixels or above to make sure scan QR code well.
 - Due to different network situation, sometimes, request time-out could happen, thus, it is necessary to do network configuration again.
 - The APP system is subject to update without prior notice for product function improvement. The actual network configuration process may be slightly different from the manual, the actual process shall prevail.
 - Please check the Service Website for more information.
- **SPECIFICATION:**
 - Wi-Fi module model: EU-SK107, US-SK107
 - Standard: IEEE 802. 11b/g/n
 - Antenna Type: Printed PCB Antenna
 - Frequency Band: 2400-2483.5MHz
 - Operation Temperature: 0°C~45°C/32°F~113°F
 - Operation Humidity: 10%~85%
 - Power Input: DC 5V/500mA
 - Maximum TX Power: <20dBm
- **PREPARATION:**
 - 1) Please ensure your mobile device is connected to Wifi router. Also, the Wifi router has already connected to Internet before doing user registration and network configuration.
 - 2) Make sure your mobile device has already been connected to the Wifi network which you want to use. Also, you need to forget other irrelevant wifi network in case it influences your configuration process.

1. DOWNLOAD AND INSTALL APP

On an app market (Google Play Store, Apple App Store), search for "MSmartHome" and find the MSmartHome app. Download and install it on your phone, You can also download the app by scanning the QR code below.



2. NETWORK CONFIGURATION

CAUTIONS:

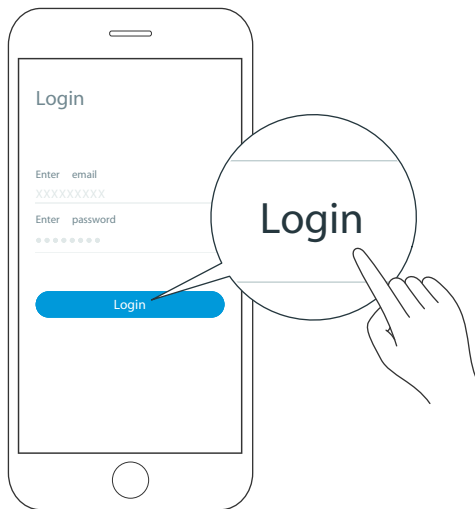
- It is necessary to forget any other around network and make sure the Android or iOS device just connect to the Wi-Fi network you want to configure.
- Make sure the Android or iOS device Wi-Fi function works well and can be connected back to your original Wi-Fi network automatically.

Kindly reminder:

User must finish all the steps in 8 minutes after powering on air conditioner, otherwise you need to power on it again.

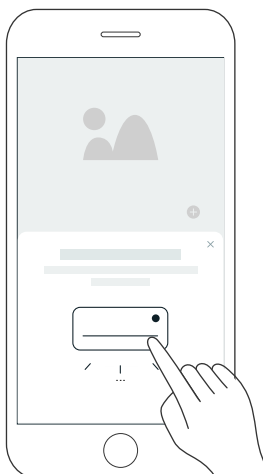
Register and log in

Open the MSmartHome app, and create a new account to start (you can also register through a third-party account). If you already had an existing account, use the account to log in.

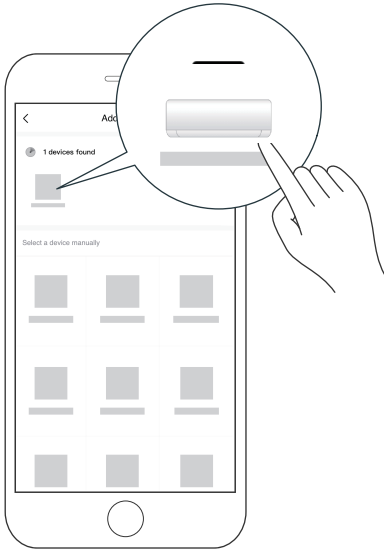


Connect your devices to MSmartHome

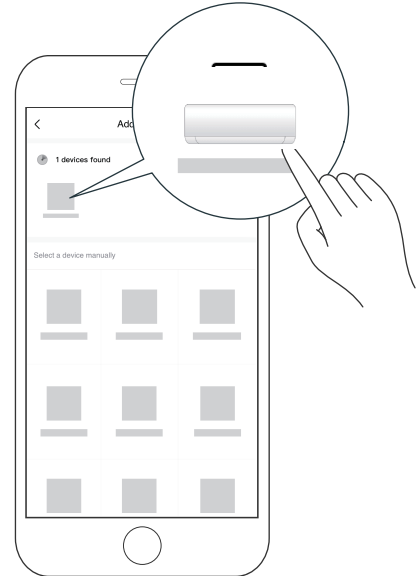
- 1). Please make sure your mobile phone is connected to Wi-Fi. If not, go to Settings and turn on the wireless connection, select and connect to a Wi-Fi. Also please turn on the Bluetooth on your phone. If not, go to Settings and turn it on.
- 2). Please power on your devices.
- 3). Open MSmartHome app on your phone.
- 4). If a message of "Smart devices discovered nearby" appears, click to add.



5). If no message appears, select "+" on the page and select your device in the list of nearby devices available. If your device is not listed, please add your device manually by the device category [Air Conditioner] and device model [Split AC].



6). Connect your device to Wi-Fi according to the instructions on app. If the connection fails, please follow the instructions provided by the app to continue with the operation.

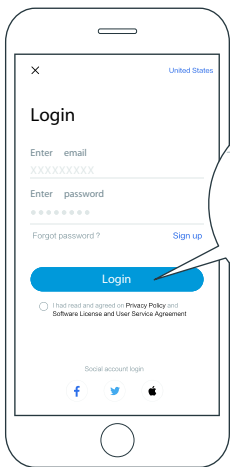


NOTE:

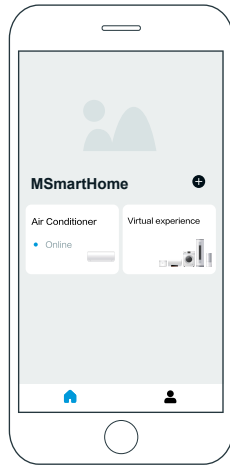
- Make sure your devices are powered on.
- Keep your mobile phone close enough to your device when you are connecting network to your device.
- Connect your mobile phone to the wireless network at home, and make sure you know the password of the Wi-Fi.
- Check if your router supports 2.4 GHz Wi-Fi band and turn it on. If you are not sure whether the router supports 2.4 GHz band, please contact the router manufacturer.
- The device cannot connect to the Wi-Fi that requires authentication, and it usually appears in public area such as hotels, restaurants, etc. Please connect to a Wi-Fi that does not require authentication.
- It is recommended to use a Wi-Fi name that only contains letters and numbers. If your Wi-Fi name contains special characters, please modify it in the router.
- Turn off the WLAN+ (Android) or WLAN Assistant (iOS) function of your mobile phone when connecting network to your devices.
- In the case that your device connected to Wi-Fi before but it needs to reconnect, please click "+" on app Home page, and add your device again by the device category and model according to the instructions on app.

3. HOW TO USE APP

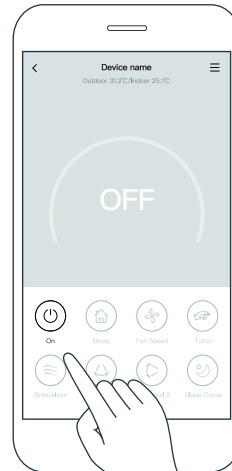
Please ensure both your mobile device and air conditioner are connected to the Internet before using app to control the air conditioner via internet, please follow the next steps:



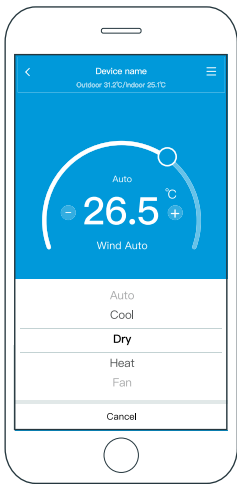
① Click "Login "



② Choose the Air Conditioner.



③ Thus, user can control air conditioners on/off status, operation mode, temperature, fan speed and so on.



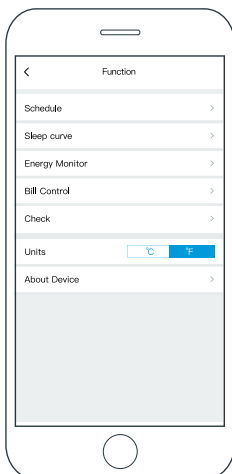
NOTE:

Not all the function of the APP is available on air conditioner. For example: ECO, Boost, Swing function, please check the user manual to find more information.

4. SPECIAL FUNCTIONS

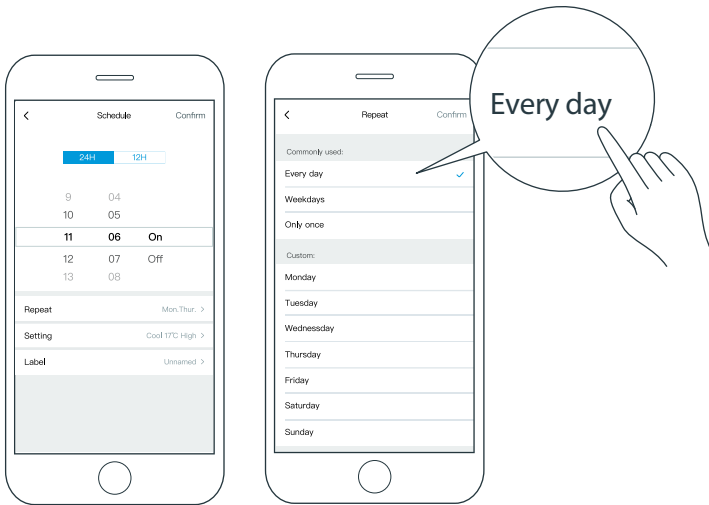
Including: Schedule, Sleep curve, Energy Monitor, Bill Control and Check.

NOTE: Not all the unit can use these special function on the APP. Thus, if the air conditioner do not support the above function, the function will be hid from the function list.



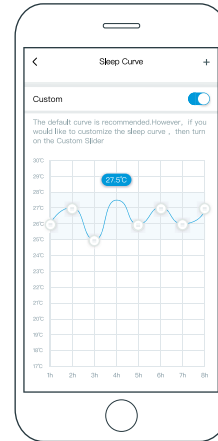
■ Schedule

Weekly, user can make an appointment to turn on or off the air conditioner on specific time. User also can choose circulation to keep the air conditioner under schedule control every week.



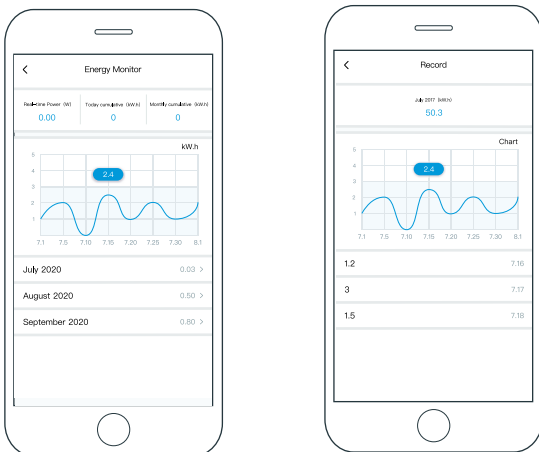
■ Sleep

Users can customize their own comfortable sleep by setting target temperature.



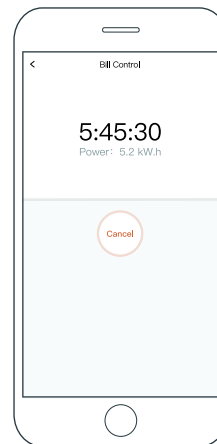
■ Energy Monitor

User can simply monitor the electricity consumption of air conditioner by checking the chart and history record.

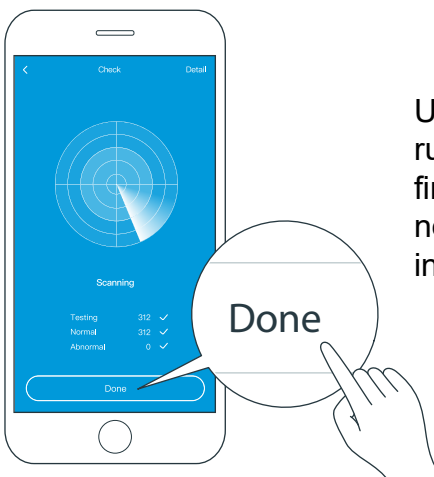


■ Bill Control

User can set parameters to limit the electricity consumption over a period of time.



■ Check



User can simply check the air conditioner running status with this function. When finishing this procedure, it can display the normal items, abnormal items, and detail information.

5. APP DECLARATION

Hereby, we declare that this Smart kit is in compliance with the essential requirements and other relevant provisions of Directive 2014/53/EU. A copy of the full DoC is attached. (European Union products only)

CAUTIONS:

WIFI module models: US-SK107,EU-SK107:

FCC ID: 2ADQOMDNA21

IC: 12575A-MDNA21

This device complies with Part 15 of the FCC Rules and it contains licence-exempt transmitter(s)/receiver(s) that comply with Innovation, Science and Economic Development Canada's licence-exempt RSS(s).

Operation is subject to the following two conditions:

- (1) This device may not cause interference; and
- (2) This device must accept any interference, including interference that may cause undesired operation of the device.

Only operate the device in accordance with the instructions supplied. Changes or modifications to this unit not expressly approved by the party responsible for compliance could void the user's authority to operate the equipment. This device complies with FCC radiation exposure limits set forth for an uncontrolled environment. In order to avoid the possibility of exceeding the FCC radio frequency exposure limits, human proximity to the antenna shall not be less than 20cm (8 inches) during normal operation.

NOTE: This equipment has been tested and found to comply with the limits for a Class B digital device, pursuant to part 15 of the FCC Rules. These limits are designed to provide reasonable protection against harmful interference in a residential installation. This equipment generates, uses and can radiate radio frequency energy and, if not installed and used in accordance with the instructions, may cause harmful interference to radio communications. However, there is no guarantee that interference will not occur in a particular installation. If this equipment does cause harmful interference to radio or television reception, which can be determined by turning the equipment off and on, the user is encouraged to try to correct the interference by one or more of the following measures:

- Reorient or relocate the receiving antenna.
- Increase the separation between the equipment and receiver.
- Connect the equipment into an outlet on a circuit different from that to which the receiver is connected.
- Consult the dealer or an experienced radio/TV technician for help.