



Polymer Power Bank P51W USER MANUAL

Power Bank featuring the
Qualcomm® Quick Charge™ 3.0 technology

Product Guide

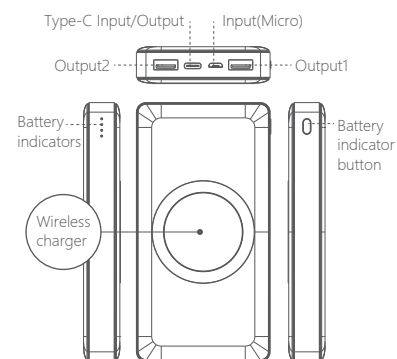
1 Accessories

- Host
- User manual
- Cable

2 Specification

Model	P51W
Input	Type-C:5V \equiv 3A 9V \equiv 2A 12V \equiv 1.5A Micro:5V \equiv 2A 9V \equiv 2A 12V \equiv 1.5A
Output1	Quick Charge 3.0 : 5V \equiv 3A 9V 2A 12V \equiv 1.5A
Output2	5V \equiv 3A
Type-C Output	5V \equiv 3A 9V \equiv 2A 12V \equiv 1.5A
Output	Wireless charger 5V/5W 9V/10W
Dimensions	135.5x70x18mm
Weight	290 \pm 10g
Battery Capacity	10000mAh/3.7V 37Wh
Rated Capacity	6800mAh/5V (TYP 1A)

3 Overview



Input	Self-charging
Output	For charging digital devices.
Battery indicators	LED indicators to show battery status
Battery indicator button	Press to check the battery level

Quick Charge function is activated only if the USB Output not connected for charging, otherwise, the Quick Charge port output is only 5V.



Thank you very much for using our products. According to the prescription, any belongs to under normal usage circumstance cause because of the product quality's problem of breakdown, our company will be responsible for giving free maintain during this period.

Free maintain won't be given under the following circumstance:

1. Without Protection to fix warrantees and the purchasing invoice.
2. The protect to fix card or purchasing invoice has been changed.
3. The breakdown and damage caused by the Force majeure.
4. The breakdown, damaged because of the transportation or handling.
5. The breakdown caused by the manipulation that hasn't follow the requests of the Manual.
6. The damage caused by the dismantle movement of non-our-company authorized maintainer.

In protect fix the period, customers can bring the purchasing invoice and the customer couplet that has filled to the vendor, and please send back to HAME for repair by the vendor.

Hame Technology Co., Limited
Web: www.hametech.com

Certificate Of Approval

Date of Manufacture: _____

Quality Controller: _____

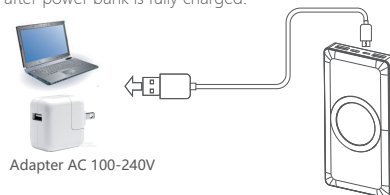
Customer Couplet

Product Name:	Customer Name:
Model:	Address:
S/N:	City:
Purchase Date:	ZIP:
Dealer:	TEL/FAX:
Dealer's address:	Email:
	Customer Signature:

Operation introduction

Charging power bank:

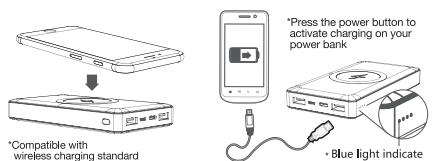
See below diagram, the white indicator is flickering when charging. It will stop flicker and all the indicators turn in white after fully charged. Please remove the adapter safely after power bank is fully charged.



Adapter AC 100-240V

Charging digital devices:

Once the power bank is connected to the digital device, the device shall be charged.



*Compatible with wireless charging standard



*Blinking light indicates recharging. Solid light indicates fully charged.

Matters needing attention

It is forbidden to put the equipment in high temperature and high humidity environment, lest cause equipment overheating and internal short circuit and damage to equipment. Storage temperature not more than 45 degrees, high temperature storage for a long time can affect the service life of the machine.

maintenance

For a long time do not use the equipment should be the power plug from the outlet of down. At least half a year using a device to ensure the service life of equipment. If the equipment malfunction, please have qualified personnel maintenance, don't disassemble equipment without permission.

Warning:

1. Do not put the device into fire or water in case of explosion or break of the device itself.
2. The product is made up of polymer battery, any behavior like dissemble, squeeze and puncture the device is strictly forbidden. Please make sure that children use this device accompanied by adults to avoid swallowing small parts.
3. Not suitable for children under 5 year-old.

Qualcomm Quick Charge is a product of Qualcomm Technologies, Inc. and/or its subsidiaries. Qualcomm is a trademark of Qualcomm Incorporated, registered in the United States and other countries. Quick Charge is a trademark of Qualcomm Incorporated.

Hame Technology Co., Limited

Add: 3/F, Plant #1, Huahan Industrial Park, No.16, Jinniu West Rd., Pingshan New District, Shenzhen 518118, China.
Website: www.hametech.com
Enterprise Standard : Q/HAME 002-2016
Made in china

- www.hametech.com
- hamedata
- weibo.cn/szhametech
- 400-115-6188

FCC STATEMENT :

This device complies with Part 15 of the FCC Rules. Operation is subject to the following two conditions:

- (1) This device may not cause harmful interference, and
- (2) This device must accept any interference received, including interference that may cause undesired operation.

Warning: Changes or modifications not expressly approved by the party responsible for compliance could void the user's authority to operate the equipment.

NOTE: This equipment has been tested and found to comply with the limits for a Class B digital device, pursuant to Part 15 of the FCC Rules. These limits are designed to provide reasonable protection against harmful interference in a residential installation. This equipment generates uses and can radiate radio frequency energy and, if not installed and used in accordance with the instructions, may cause harmful interference to radio communications. However, there is no guarantee that interference will not occur in a particular installation. If this equipment does cause harmful interference to radio or television reception, which can be determined by turning the equipment off and on, the user is encouraged to try to correct the interference by one or more of the following measures:

- Reorient or relocate the receiving antenna.

- Increase the separation between the equipment and receiver.

- Connect the equipment into an outlet on a circuit different from that to which the receiver is connected.

- Consult the dealer or an experienced radio/TV technician for help.

FCC Radiation Exposure Statement:

This equipment complies with FCC radiation exposure limits set forth for an uncontrolled environment. This equipment should be installed and operated with minimum distance 20cm between the radiator & your body.