

# FCC TEST REPORT

For

Hamedata Technology Co., Limited

Wireless Charging Power Bank

Model No.: P51W

Prepared For : Hamedata Technology Co., Limited  
Address : 1st Zone, 3F, Plant#1, Huahan Industrial Park, No.16, Jinniu West Rd.,  
Pingshan New District, Shenzhen, China, 518118

Prepared By : Shenzhen Anbotek Compliance Laboratory Limited  
Address : 1/F, Building D, Sogood Science and Technology Park, Sanwei  
community, Hangcheng Street, Bao'an District, Shenzhen, Guangdong,  
China.518102  
Tel: (86) 755-26066440 Fax: (86) 755-26014772

Report Number : SZAWW180711002-02

Date of Receipt : Jul. 10, 2018


Date of Test : Jul. 10~20, 2018

Date of Report : Jul. 20, 2018

# Contents

- 1. General Information..... 4
  - 1.1. Client Information..... 4
  - 1.2. Description of Device (EUT)..... 4
  - 1.3. Auxiliary Equipment Used During Test..... 4
  - 1.6. Description Of Test Setup..... 5
  - 1.7. Test Equipment List..... 6
  - 1.8. Description of Test Facility..... 6
- 2. Measurement and Result..... 7
  - 2.1. Requirements..... 7
  - 2.2. Test Setup..... 8
  - 2.3. Test Procedure..... 8
  - 2.4. Test Result..... 8
    - 2.4.1. Equipment Approval Considerations item 5.b of KDB 680106 D01 v03..... 8
    - 2.4.2. Environmental evaluation and exposure limit according to FCC CFR 47 part 1, 1.1307(b), 1.1310..... 9
- APPENDIX I -- TEST SETUP PHOTOGRAPH..... 11

# TEST REPORT

Applicant : Hamedata Technology Co., Limited  
Manufacturer : Hamedata Technology Co., Limited  
Product Name : Wireless Charging Power Bank  
Model No. : P51W  
Trade Mark :   
Rating(s) : Battery Capacity: 10000mAh/ 3.7V, 37Wh  
Rated Capacity: 6800mAh/5V(TYP 1A)  
Input: Micro 5V==2A/ 9V==2A  
Input: Type-C: PD 5V==3A/ 9V==2A  
Output: Wireless charger: 5V/5W, 9V/10W  
Output: Type-C: PD 5V==3A/ 9V==2A/ 12V==1.5A  
Output: QC3.0 5V==3A/ 9V==2A/ 12V==1.5A  
USB Output2: 5V==3A

**Test Standard(s) : FCC Part 1.1310, 1.1307(b)**

**Test Method(s) : KDB680106 D01 RF Exposure Wireless Charging Apps v03**

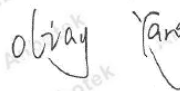
The device described above is tested by Shenzhen Anbotek Compliance Laboratory Limited to determine the maximum emission levels emanating from the device and the severe levels of the device can endure and its performance criterion. The measurement results are contained in this test report and Shenzhen Anbotek Compliance Laboratory Limited is assumed full of responsibility for the accuracy and completeness of these measurements. Also, this report shows that the EUT (Equipment Under Test) is technically compliant with the FCC Part 1.1307 & KDB680106 D01 requirements.

This report applies to above tested sample only and shall not be reproduced in part without written approval of Shenzhen Anbotek Compliance Laboratory Limited.

Date of Test

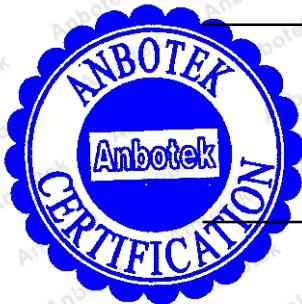
Jul. 10~20, 2018

Prepared by



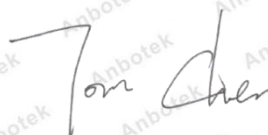
(Engineer / Oliay Yang)

Reviewer



(Supervisor / Calvin Liu)

Approved & Authorized Signer




(Manager / Tom Chen)

# 1. General Information

## 1.1. Client Information

Applicant	:	Hamedata Technology Co., Limited
Address	:	1st Zone, 3F, Plant#1, Huahan Industrial Park, No.16, Jinniu West Rd., Pingshan New District, Shenzhen, China, 518118
Manufacturer	:	Hamedata Technology Co., Limited
Address	:	1st Zone, 3F, Plant#1, Huahan Industrial Park, No.16, Jinniu West Rd., Pingshan New District, Shenzhen, China, 518118

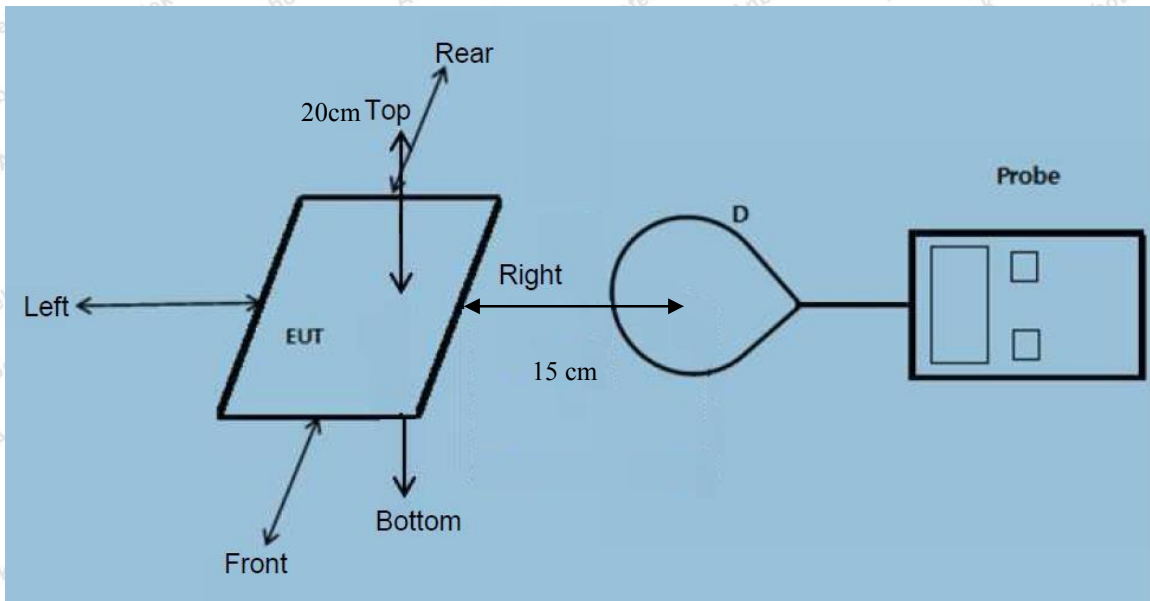
## 1.2. Description of Device (EUT)

Product Name	:	Wireless Charging Power Bank	
Model No.	:	P51W	
Trade Mark	:		
Test Power Supply	:	AC 120V, 60Hz for adapter / AC 240V, 60Hz for adapter/ DC 3.7V battery inside	
Test Sample No.	:	S1, S2	
Product Description	:	Operation Frequency:	120-205KHz
	:	Number of Channel:	18 Channels
	:	Modulation Type:	MSK
	:	Antenna Type:	Loop Antenna
	:	Antenna Gain(Peak):	0 dBi
<b>Remark:</b> 1) For a more detailed features description, please refer to the manufacturer's specifications or the User's Manual.			

## 1.3. Auxiliary Equipment Used During Test

Adapter	:	Model: A2013 Input: 100-240V 50-60Hz 0.7A Output: 3.6-6.5V=== 3A/ 6.5-9V=== 2A/ 9-12V=== 1.5A
Mobile Phone	:	Samsung

### 1.6. Description Of Test Setup



Note: Measurements should be made from all sides and the top of the primary/client pair, with the 15 cm measured from the center of the probe(s) to the edge of the device

### 1.7. Test Equipment List

Item	Equipment	Manufacturer	Model No.	Serial No.	Last Cal.	Cal. Interval
1	Magnetic field meter	NARDA	ELT-400	423623	Nov.17, 2017	1 Year

### 1.8. Description of Test Facility

The test facility is recognized, certified, or accredited by the following organizations:

#### FCC-Registration No.: 184111

Shenzhen Anbotek Compliance Laboratory Limited, EMC Laboratory has been registered and fully described in a report filed with the (FCC) Federal Communications Commission. The acceptance letter from the FCC is maintained in our files. Registration No. 184111, July 31, 2017.

#### ISED-Registration No.: 8058A-1

Shenzhen Anbotek Compliance Laboratory Limited, EMC Laboratory has been registered and fully described in a report filed with the (ISED) Innovation, Science and Economic Development Canada. The acceptance letter from the ISED is maintained in our files. Registration 8058A-1, June 13, 2016.

#### Test Location

All Emissions tests were performed at Shenzhen Anbotek Compliance Laboratory Limited. at 1/F, Building D, Sogood Science and Technology Park, Sanwei community, Hangcheng Street, Bao'an District, Shenzhen, Guangdong, China.518102

## 2. Measurement and Result

### 2.1. Requirements

According to the item 5.b) of KDB 680106 D01v03:

Inductive wireless power transfer applications that meet all of the following requirements are excluded from submitting an RF exposure evaluation.

- 1) Power transfer frequency is less than 1 MHz
- 2) Output power from each primary coil is less than or equal to 15 watts.
- 3) The transfer system includes only single primary and secondary coils. This includes charging systems that may have multiple primary coils and clients that are able to detect and allow coupling only between individual pairs of coils
- 4) Client device is inserted in or placed directly in contact with the transmitter
- 5) Mobile exposure conditions only (portable exposure conditions are not covered by this exclusion)
- 6) The aggregate H-field strengths at 15 cm surrounding the device and 20 cm above the top surface from all simultaneous transmitting coils are demonstrated to be less than 50% of the MPE limit.

Limits For Maximum Permissible Exposure (MPE)

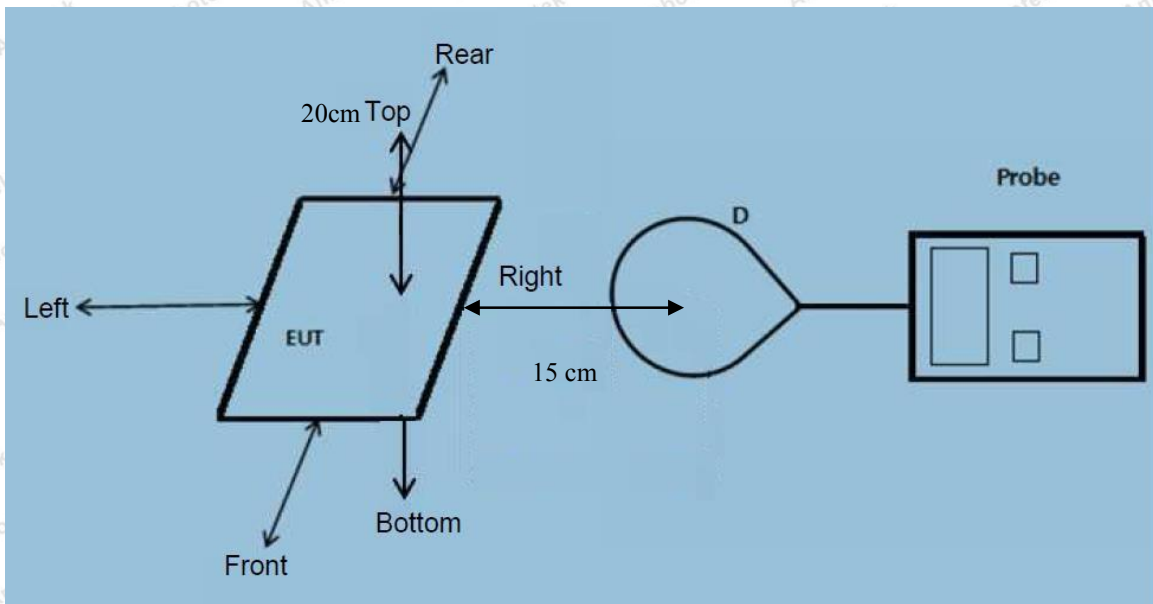
Frequency range (MHz)	Electric field strength (V/m)	Magnetic field strength (A/m)	Power density (mW/cm <sup>2</sup> )	Averaging time (minutes)
<b>(A) Limits for Occupational/Controlled Exposures</b>				
0.3-3.0	614	1.63	*(100)	6
3.0-30	1842/f	4.89/f	*(900/f <sup>2</sup> )	6
30-300	61.4	0.163	1.0	6
300-1500	/	/	f/300	6
1500-100,000	/	/	5	6
<b>(B) Limits for General Population/Uncontrolled Exposure</b>				
0.3-1.34	614	1.63	*(100)	30
1.34-30	824/f	2.19/f	*(180/f <sup>2</sup> )	30
30-300	27.5	0.073	0.2	30
300-1500	/	/	f/1500	30
1500-100,000	/	/	1.0	30

F=frequency in MHz

\*=Plane-wave equivalent power density

RF exposure compliance will need to be determined with respect to 1.1307(c) and (d) of the FCC rules. The emissions should be within the limits at 300kHz in Table 1 of 1.1310(use the 300kHz limits for 150kHz:614V/m,1.63A/m).

## 2.2. Test Setup



Note: Measurements should be made from all sides and the top of the primary/client pair, with the 15 cm measured from the center of the probe(s) to the edge of the device

## 2.3. Test Procedure

- 1) The RF exposure test was performed in anechoic chamber.
- 2) The measurement probe was placed at test distance (15 cm) which is between the edge of the charger and the geometric center of probe.
- 3) The highest emission level was recorded and compared with limit as soon as measurement of each points (A, B, C, D, E) were completed. (A is the right, B is the back, C is the left, D is the front, and E is the top.)
- 4) The EUT was measured according to the dictates of KDB 680106 D01 v03.

Remark;

The EUT's test position A, B, C, D and E is valid for the E and H field measurements.

## 2.4. Test Result

### 2.4.1. Equipment Approval Considerations item 5.b of KDB 680106 D01 v03.

- 1) Power transfer frequency is less than 1 MHz
  - The device operate in the frequency range from 120 KHz to 205 KHz
- 2) Output power from each primary coil is less than 15 watts
  - The maximum output power of the primary coil is 10W.
- 3) The transfer system includes only single primary and secondary coils. This includes charging systems that may have multiple primary coils and clients that are able to detect and allow coupling only between individual pairs of coils
  - The transfer system including a charging system with only single primary coils is to detect and allow only



between individual pairs of coils.

4) Client device is inserted in or placed directly in contact with the transmitter

- Client device is placed directly in contact with the transmitter.

5) Mobile exposure conditions only (portable exposure conditions are not covered by this exclusion)

- The EUT is a Mobile Power Pack with Wireless Charger

6) The aggregate H-field strengths at 15 cm surrounding the device and 20 cm above the top surface from all simultaneous transmitting coils are demonstrated to be less than 50% of the MPE limit.

- The EUT E-Field Strength levels at 15 cm & The EUT H-Field Strength levels at 15 cm are less than 50% the MPE limit.

The test results please refer to the section 2.4.2

### 2.4.2. Environmental evaluation and exposure limit according to FCC CFR 47 part 1, 1.1307(b), 1.1310

**E-Field Strength at 15 cm surrounding the EUT and 20cm above the top surface of the EUT**

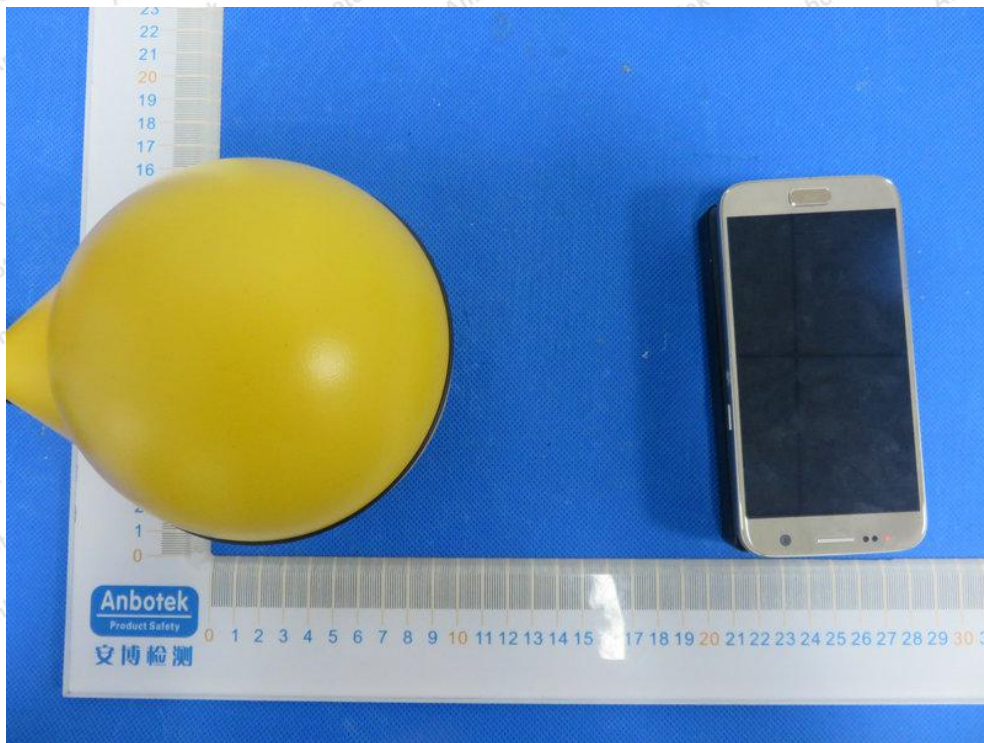
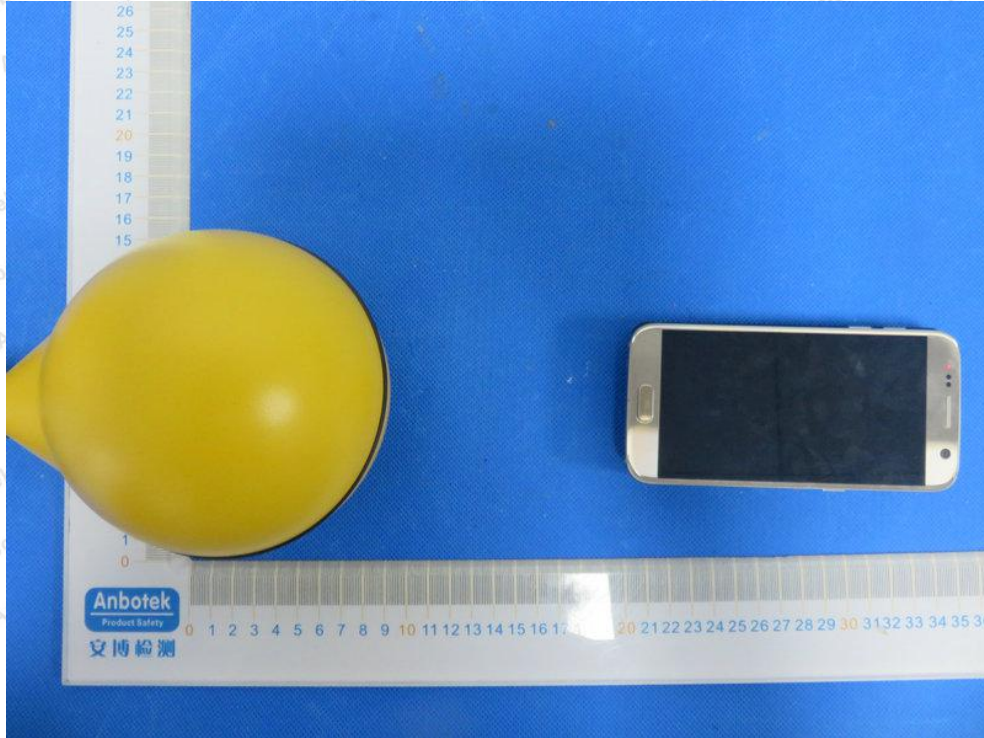
Battery power	Frequency Range (KHz)	Test Position A	Test Position B	Test Position C	Test Position D	Test Position E	Reference Limit (V/m)	Limits Test (V/m)
1%	120~205	0.34	0.32	0.31	0.39	0.20	307	614
50%	120~205	1.22	1.22	1.35	1.35	1.37	307	614
99%	120~205	2.52	2.43	2.32	2.46	2.31	307	614
Stand-by	120~205	0.40	0.32	0.23	0.35	0.22	307	614

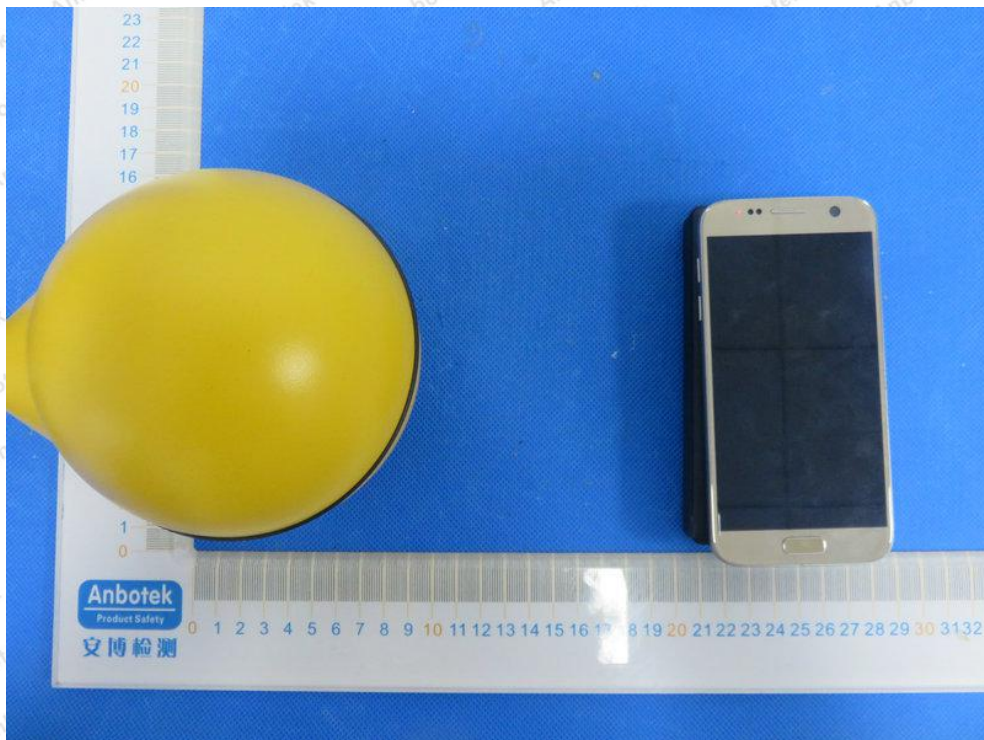
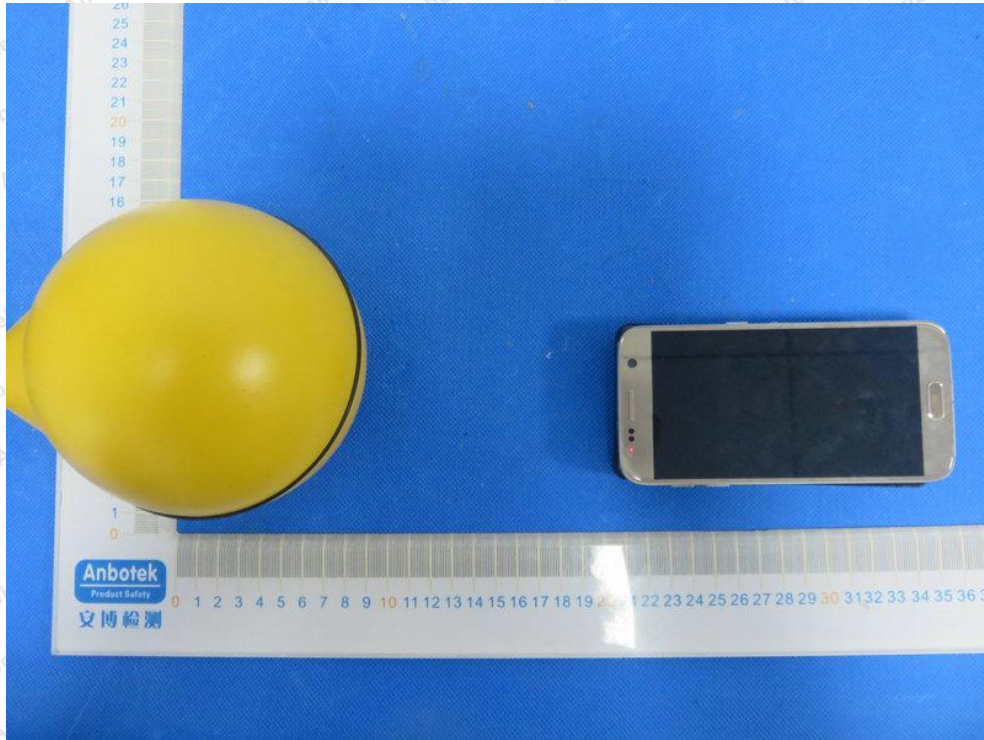
H-Field Strength at 15 cm surrounding the EUT and 20cm above the top surface of the EUT

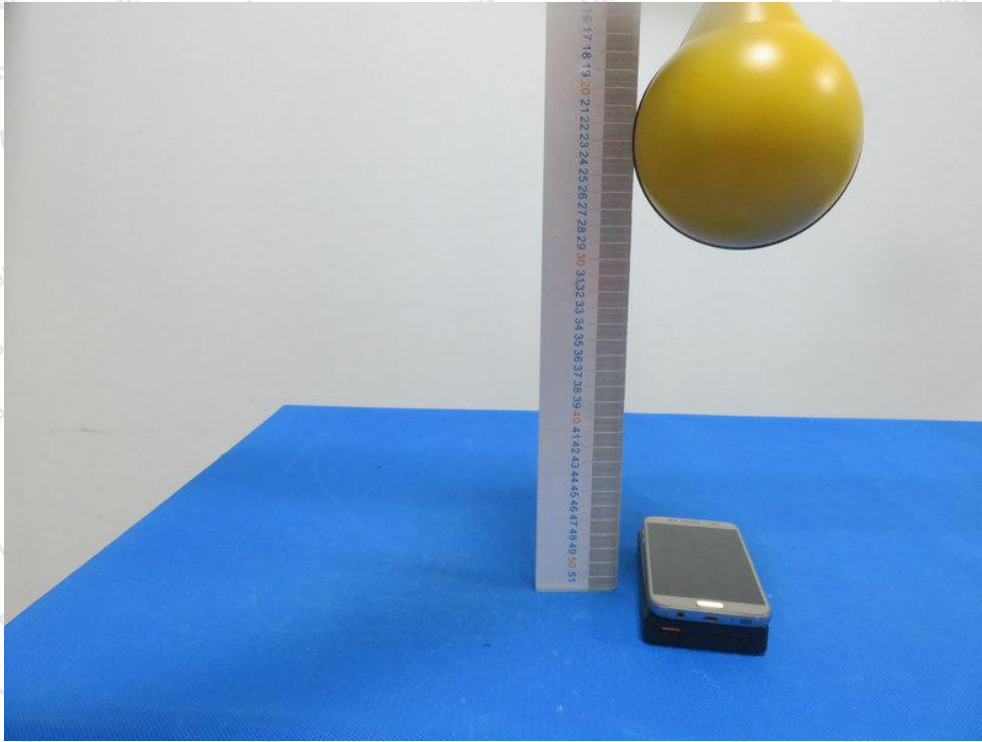
Battery power	Frequency Range (KHz)	Test Position A	Test Position B	Test Position C	Test Position D	Test Position E	Reference Limit (A/m)	Limits Test (A/m)
1%	120~205	0.032	0.051	0.063	0.073	0.023	0.815	1.63
50%	120~205	0.12	0.11	0.13	0.14	0.16	0.815	1.63
99%	120~205	0.22	0.24	0.35	0.42	0.35	0.815	1.63
Stand-by	120~205	0.33	0.14	0.17	0.12	0.17	0.815	1.63

## APPENDIX I-- TEST SETUP PHOTOGRAPH

Photo of MPE Measurement







----- End of Report -----