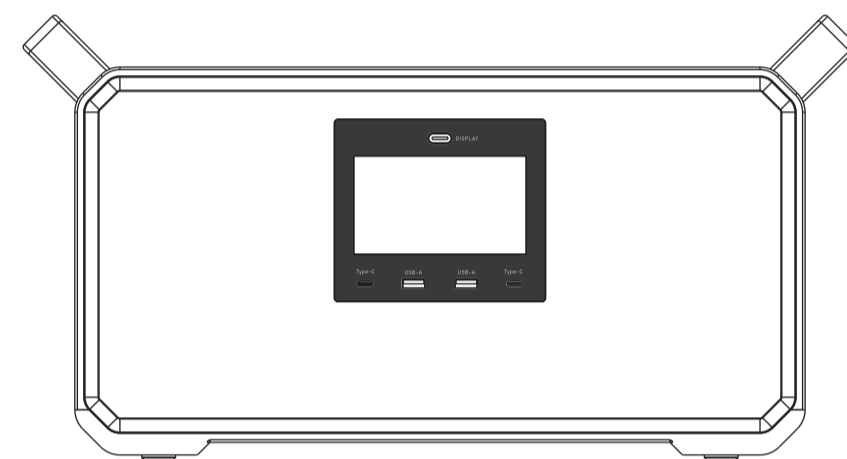
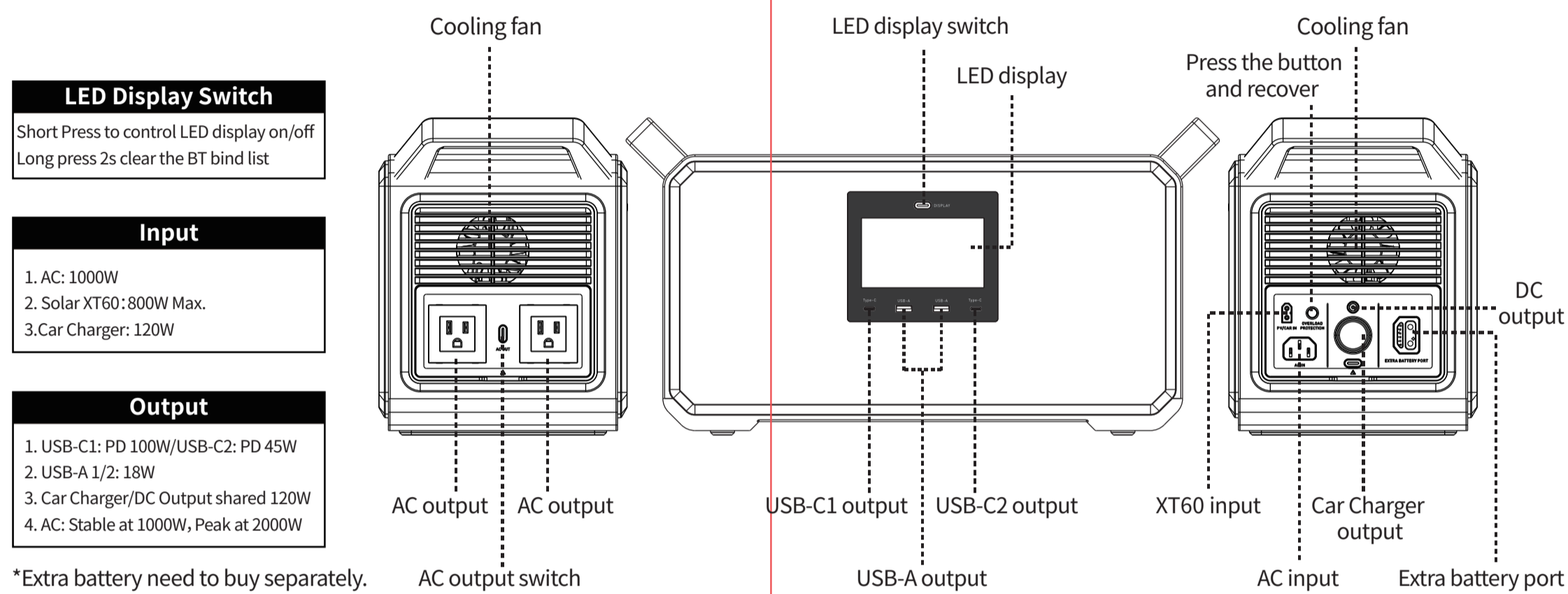


M1200

Outdoor Power Station Instruction Manual



Attention! This manual is generally used in energy storage system products with an AC output range of 100-240V/50Hz-60Hz. The actual specifications of the product, especially the AC output, will be customized according to different countries, regions and users. Please read this manual carefully before using this product.



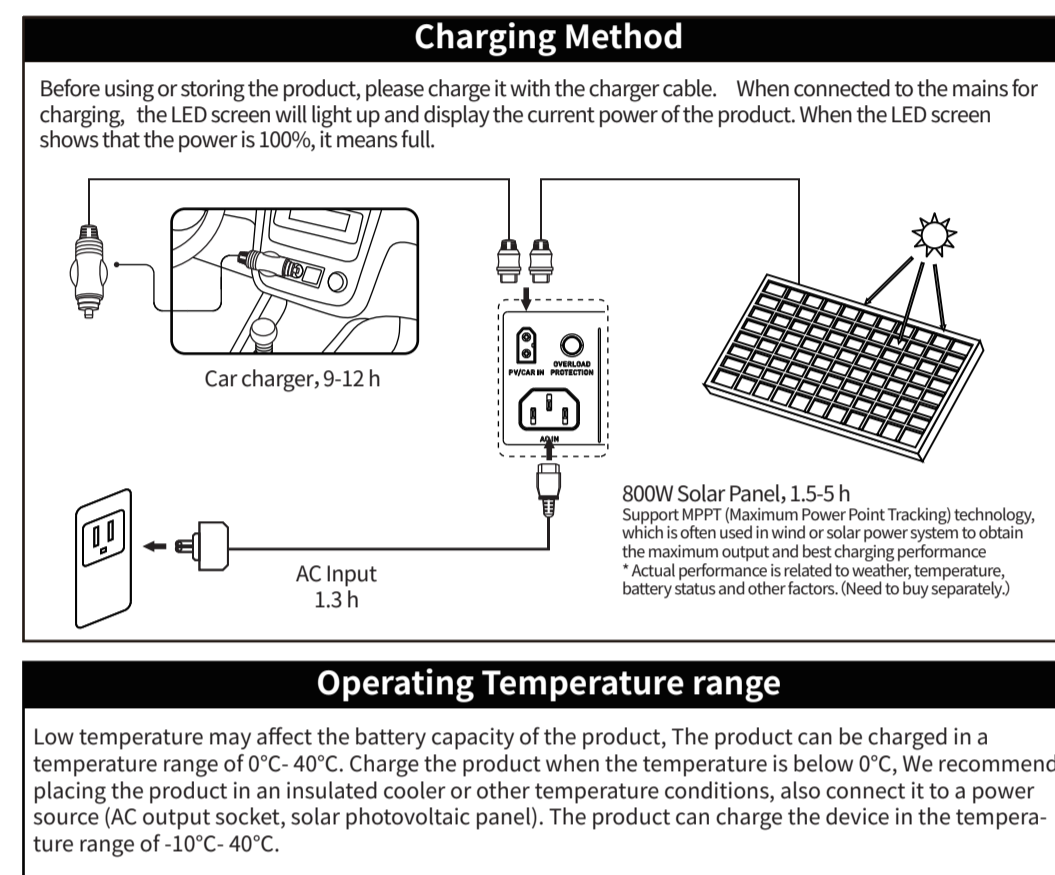
LED Display Switch
Short Press to control LED display on/off
Long press 2s clear the BT bind list

Input
1. AC: 1000W
2. Solar XT60: 800W Max.
3. Car Charger: 120W

Output
1. USB-C1: PD 100W/USB-C2: PD 45W
2. USB-A 1/2: 18W
3. Car Charger/DC Output shared 120W
4. AC: Stable at 1000W, Peak at 2000W

*Extra battery need to buy separately.

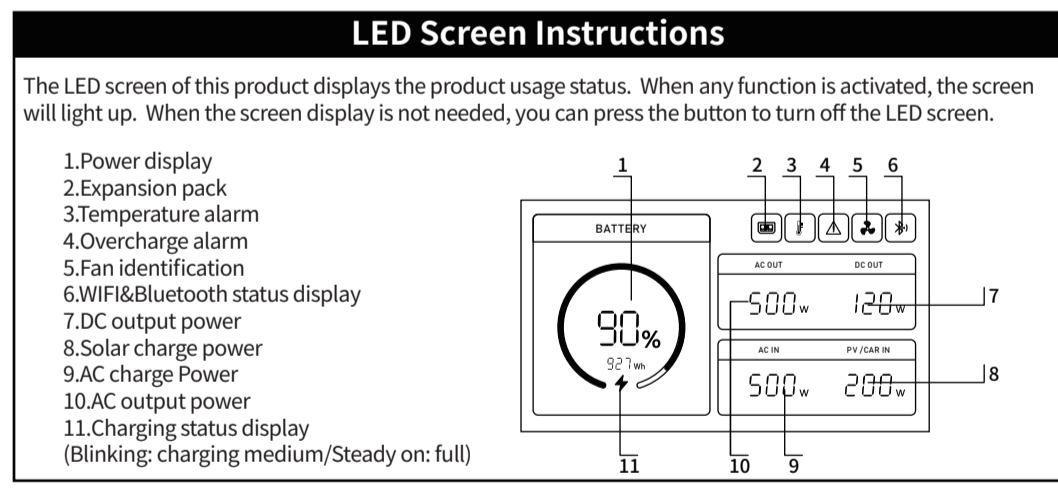
Chargeable device	
USB Output: Smartphone, Smartwatch, Digital Camera, E-reader, Tablet, etc. 12V Car charger Outlet: Light, Car Adaptor, etc. AC Output: Laptop, LED screen, Household appliances, etc.	
AC Output:	
LED lights 12V/5W (175h)	Camera 16WH (54 times)
Drone 60WH (14.5 times)	Fan 45W (19 h)
Wall breaking machine 250W (3.5h)	Electric cooker 800W (1.1 h)
Laptop 60WH (14.5 times)	Electric Drill 1000W (0.87 h)
TV 110W (7.5 h)	Hair Dryer 800W (1.1 h)
Electric oven 1000W (0.87 h)	Projector 100W (8.7 h)
USB Output:	
iPhone 13 3095mAh (75 times)	Nintendo Switch 4310mAh (54 times)
load pro2021 26.65Wh (30 times)	Car charger Outlet Car refrigerator 65W (13 h)
DC Output	



Operating Temperature range
Low temperature may affect the battery capacity of the product. The product can be charged in a temperature range of 0°C-40°C. Charge the product when the temperature is below 0°C. We recommend placing the product in an insulated cooler or other temperature conditions, also connect it to a power source (AC output socket, solar photovoltaic panel). The product can charge the device in the temperature range of -10°C-40°C.

Specifications									
Capacity	Weight	Dimension	AC Input	Solar Input	Car charger Output	DC Output	USB-C Output	USB-A Output	AC Output
1030.4Wh (23000mAh@48.8V)	14kg	462.7*195*247.8mm	1000W Max.	XT60 800W Max.	120W Max.	120W Max.	1PD100W 2PD45W	18W Max.	Stable at 1000W Peak at 2000W
Battery Cell	Cycle times	Storage Temperature	Operation Temperature	Charging Temperature	Protect system	Bluetooth	Warranty	Certificate	
LiFePO4-Battery	4000times	-10-45°C	-10-42°C	0-42°C	Overvoltage protection, Overcurrent protection, Overtemperature protection, Overcharge protection, Short-circuit protection	Bluetooth 5.0 with APP	12 months	CE, RoHS	
Packing list									
Outdoor power supply	AC charger cable	User manual							

Use Instructions
How to use it:
1. Press the switch button next to the port you would like to use.
2. When the indicator light next to the port is light up, the output will be turned on, and the responding device can be charged.
3. AC output is stable at 1000W (peak at 2000W). If the rated power of the devices you are charging exceeds the maximum power, the power supply will be automatically turned off to protect the product from overload.
4. If the AC output is not loaded for 2 hours, it will be turned off. When the DC output is unloaded for 12 hours, it will be turned off.
5. If the product is not used for a long time, it should be recharged every three months. Also, it is better to keep the power at 60%-80% and store it in a cool and dry place.
Attention! If the AC port is not in use, please turn it off to save power.



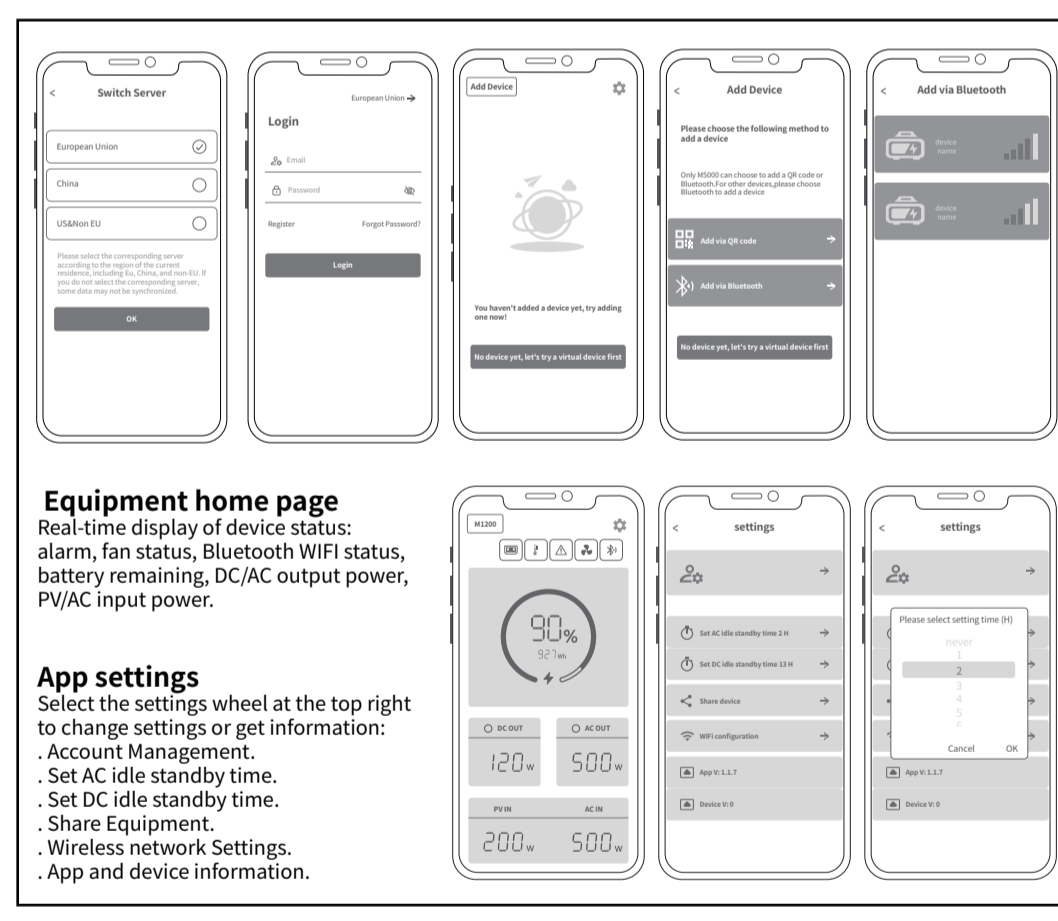
APP Instructions
Power Zero can connect all your devices via Bluetooth or Wi-Fi to track your energy use and production in real time, dynamically display the status data of the device in real time, and control the energy of the device in its own hands.
This software could be operated on mobile phones with Android 6.0 and IOS12.0 or above.

Software installed
Scan the QR code and install the opened app on your smartphone.

Power Zero
After installation, users can click the desktop icon to enter the login interface, you will enter the server switching interface when you open it at the first time.
Select Register Account, Enter your e-mail address. A confirmation code will be sent to the email address previously provided for verification. Confirm your email in the app with the code you have just received and set a password.
Log in with your e-mail address and the password you have chosen.
If you have forgotten your password, select "Forgot Password?" and reset it.
In the login interface click on the upper right corner -> enter the server selection interface, according to different regions to choose. If you select the wrong server, the app cannot retrieve device history data.

Equipment home page
Real-time display of device status: alarm, fan status, Bluetooth/WiFi status, battery remaining, DC/AC output power, PV/AC input power.

App settings
Select the settings wheel at the top right to change settings or get information:
Account Management.
Set AC idle standby time.
Once the device has been successfully added, the name of your power station is displayed on the start page.
Clicking on different devices in the device management page will switch the connection to different devices, left swipe on IOS system triggers modifying and deleting devices, long press on the device list on Android system triggers modifying and deleting devices.



Fault diagnosis
If your device is not successfully charged with this product, please follow the steps below:
1. Ensure that the output port is open, LED indicator lights on the power button.
2. Check the LED power display, if it is 20% or less, please charge the product.
3. The power of the device you are using exceeds the maximum power of the port of the product.
4. The device link cable you are using is not plugged in well or has poor contact.

Frequently Q&A
Q: What is the battery type?
LiFePO4 Battery.
Q: Can the product be taken on the aircraft?
No, According to the airline transportation standards, 100Wh capacity of lithium battery can not board the aircraft.
Q: Can be charged with solar panels from a different brand?
Yes. Please use solar panels that meet the following specifications for charging. Voltage range: 12-59VDC, Rated output power (discharging): 800W max. (Choose our solar photovoltaic products, just insert the DC port, you can easily charge the product with solar energy. This product uses MPPT (Maximum Power Tracking) technology, which can compare the output voltage point of the solar panel with the battery voltage of the product in real time, so as to find the maximum power output point that the solar panel can provide and charge the battery of the machine to obtain the best charging efficiency. * Actual performance is related to weather.)
Q: How to estimate the working time of the product?
The LED display of this product can help you better understand the working status of the power supply. You can recognize the remaining working time of the product by the battery percentage in the display.

Warranty and Contact Information
Under normal use of the product, it will not affect the result of defective workmanship and materials used in the product. This warranty period describes the complete and exclusive warranty obligations of the product, and we will not assign or authorize anyone to be responsible for any other products.
warranty period
Product warranty period of 1 year. In all cases, the warranty period starts from the date of purchase by the consumer. In order to ensure the start date of the warranty period, the consumer needs to provide proof of purchase or other reasonable supporting documents.
The following conditions are not covered by the warranty
1. The appearance of the product is damaged after use.
2. Unauthorized disassembly and maintenance of non-professionals.
3. Performance problems caused by human factors.
4. Damage caused by natural disasters, lightning strikes, accidents and other irresistible factors.
How to get warranty service
You can contact our customer service through our official website or e-commerce platform. Thank you for your cooperation!

Chemical composition of toxic and harmful substances

Part	Toxic and harmful substances or chemical elements										
Name	Pb	Hg	Cd	Cu	Cr(VI)	PHH	PFCE				
Product	0	0	0	0	0	0	0	D: The content of hazardous substances in homogeneous materials: all components are limit requirement specified in GB/T 26572.			
Shell	0	0	0	0	0	0	0	X: The content of hazardous substance in at least one of the average materials of the part exceeds the limit requirement of GB/T 26572, and there is no mature alternative in the industry at present, which meets the environmental protection requirements of the EU RoHS directive.			
Circuit module	0	0	0	0	0	0	0				
Button	0	0	0	0	0	0	0				
Switch	0	0	0	0	0	0	0				
Hardware	0	0	0	0	0	0	0				
Charging	0	0	0	0	0	0	0				
Case	0	0	0	0	0	0	0				
Battery	0	0	0	0	0	0	0				

This information for reference purposes only and does not represent a binding agreement. Product (Color, Size, OSD, etc) in kind prevail.

Important safety information

Warnings!

Please notice the following safety precautions carefully.
A. Do not make a short-circuit. Please avoid storing the product together with metal objects, such as coins, jewelry, keys, etc.
B. Do not water or heat the product, such as putting in the fire or liquid, including direct sun light.
C. Do not place the product in a highly humid and dusty environment.
D. Do not disassemble the device in any way.
E. Do not drop, put heavy objects on or strongly impact the product.
F. Please place this product in a place where people with low physical, sensory and mental abilities, lack of experienced and relevant knowledge person can not reach, unless there is supervision or guidance by personnel responsible for their safety.
G. Please avoid children operating this product.
H. Do not cover the product with towels or clothing when using it.
I. Get hot when being charged is a normal phenomenon, please be careful.
J. Do not exceed the time request for this product to be charged.
K. Please disconnect with the product in time if the appliances are fully charged.
L. Please use the product normally and avoid electric shock.
M. Please deal with the scraps according to the regulations. Do not treat the built-in batteries as domestic garbage, so as not to cause explosion and pollution.
N. Only used for emergency power supply, can not replace standard DC power supply or AC power supply for household appliances or digital equipment.

RoHS
Made in China

FCC Warning

This device complies with part 15 of the FCC Rules. Operation is subject to the following two conditions: (1) This device may not cause harmful interference, and (2) this device must accept any interference received, including interference that may cause undesired operation.

Any Changes or modifications not expressly approved by the party responsible for compliance could void the user's authority to operate the equipment.

Note: This equipment has been tested and found to comply with the limits for a Class B digital device, pursuant to part 15 of the FCC Rules. These limits are designed to provide reasonable protection against harmful interference in a residential installation. This equipment generates uses and can radiate radio frequency energy and, if not installed and used in accordance with the instructions, may cause harmful interference to radio communications. However, there is no guarantee that interference will not occur in a particular installation. If this equipment does cause harmful interference to radio or television reception, which can be determined by turning the equipment off and on, the user is encouraged to try to correct the interference by one or more of the following measures:

- Reorient or relocate the receiving antenna.
- Increase the separation between the equipment and receiver.
- Connect the equipment into an outlet on a circuit different from that to which the receiver is connected.
- Consult the dealer or an experienced radio/TV technician for help.

This equipment complies with FCC radiation exposure limits set forth for an uncontrolled environment. This equipment should be installed and operated with minimum distance 20cm between the radiator & your body.