



**Thank you for your IRULU purchasing.
We take pride in our products.
At affordable prices to give you the
best user experience possible!**

Warning

- .Charging in shutdown state for 8 hours
before you first use it.**
- .Charge 8 hours for the first 3 times**

Troubleshooting


- .If you can't turn on tablet, please charge
battery for 8 hours at least**

Content

1. Introduction to Desktop.....	2
1.1 Windows start menu	2
1.2 Introduction to app Interface	3
1.3 Action center.....	4
1.4 Running programme.....	5
1.5 Dual-Screen application.....	5
2. Basic Operations.....	6
2.1 Sleep, restart and shut down.....	6
2.2 Recovery.....	6
2.3 Bluetooth.....	7
2.4 Security management.....	7
3. Warranty & Feedback.....	8
4. Safety environment.....	8

<http://www.irulu.com>

1. Introduction to Desktop

1.1 Windows Start Menu: Press Win on the keyboard or click  on the screen, you can see the Start Menu. These application programs are displayed in the form of “magnet” and list. As long as you click them, you can easily visit them.

You need to log on your Microsoft account before the application program completely runs.

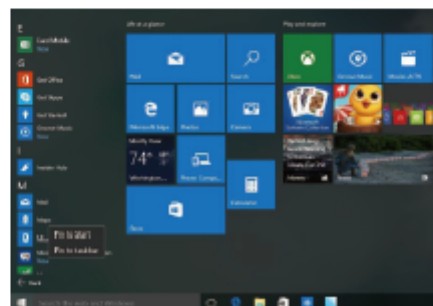


1.2 Introduction to app Interface



In addition to the application programs already pinned on the start menu, you can check the other application list via "Win" - "A" apps", such as other software application programs in the Laptop.

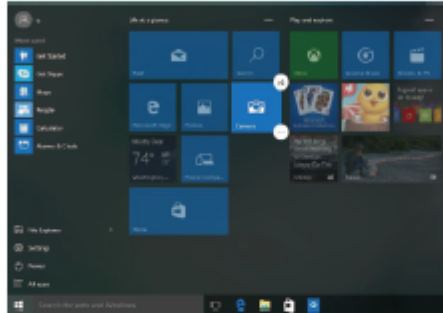


If you want to pin more application programs on the start interface, press and hold the application program for about one second, and release the magnet till the pop-up option appears, and select "Pin to Start" to fix to the start screen, or, just press and move to the start screens.



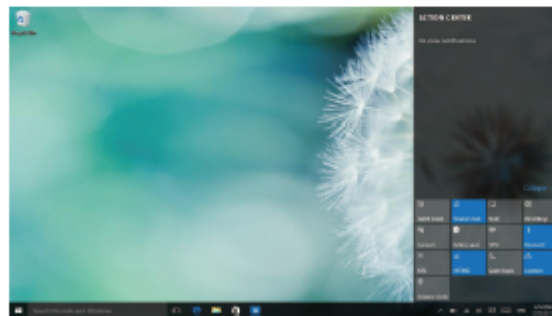
<http://www.irulu.com>

Conversely, if you want to cancel or delete a certain application in the start screen, press and hold the application program magnet for about one second, click , you can also click  to check more menu, such as resize the magnet you want.




1.3 Action center

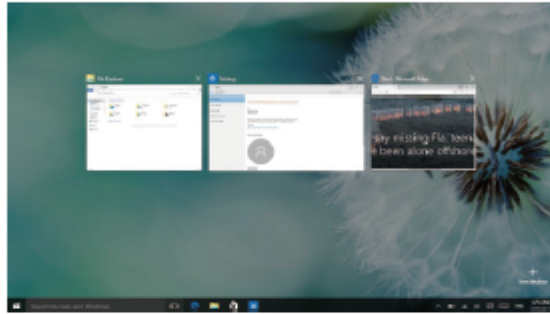
Slide it to the left from the right side of the screen to start Action Center to check the laptop status: Rotation lock, Bluetooth, Brightness, etc.



<http://www.irulu.com>

1.4 Running programme

Slide it to the right from the left side of the screen to scan the running program, and you can close it via click .



1.5 Dual-Screen application

On My Computer in (Figure 1), slide it inward from the left side of the screen, drag it and hold. Let go when seeing double interfaces appear. In (Figure 2), press the partition button on the middle partition line and drag right and left to partition the display proportion of the double screens.



(Figure 1)

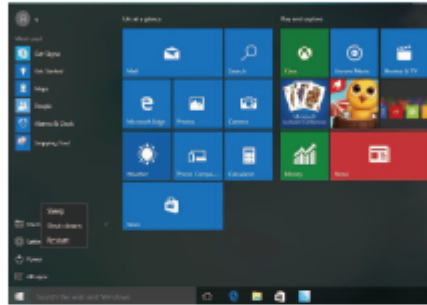


(Figure 2)

<http://www.irulu.com>

2. Basic Operations

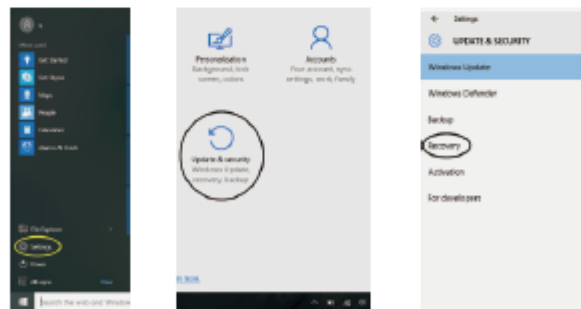
2.1 Sleep, restart and shut down



• Reset / Shutdown forcibly





If the tablet freezes, you can press and hold the Power button for 8–12 seconds, then the tablet will shutdown.

2.2 Recovery

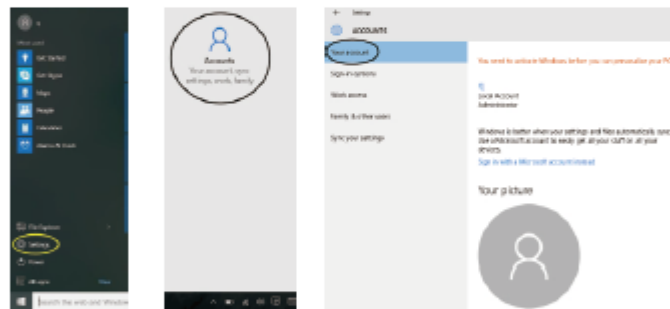


<http://www.irulu.com>

2.3 Bluetooth

- a) Turn on Bluetooth: Start Menu - Settings - Devices - Bluetooth.
After turn on bluetooth, the tablet will auto-search other device, and you can pair with your device.
- b) Send a File: Before sending the files, you should open the window "Select where to send your files": Click  at lower right corner of desktop -  - Send a File.
- c) Receive a File: Before receiving the files, you should open the window "Waiting for a connection": Click  at lower right corner of desktop -  - Receive a File.

2.4 Security management



Method for quick setup:

Click the "Win" button in the lower left corner of screen, and select "Settings".
Select "Accounts" on the right and click "Create local account" in "Your account" on the right side. After inputting the password of Complete Windows Live **Id** Account, input username, password, confirm password and password prompt.



3. Warranty & Feedback

All IRULU products offer Limited One Year Warranty & 60 Days Money Back Guarantee. Please visit <http://www.irulu.com> for detail warranty statements.

We would like to hear from you. If you enjoy the unit, we would sincerely appreciate your unbiased 4 or 5 star product review and feedback for us on Amazon or our [irulu.com](http://www.irulu.com). Product review helps others find what they want, and also help you get a chance to expand The General Warranty to The Prime Warranty. See details on our [irulu](http://www.irulu.com) website <http://www.irulu.com/primewarranty.html>

And if you have any questions or met any problem, do no hesitate to contact us at sales@irulu.com or contact your seller directly.

4. Safety environment



Your IRULU product has been laboratory tested; it complies with European guidelines corresponding to the CE labelling in force at the time of its launch.



Your IRULU product's components are traceable; this demonstrates the product's compliance to environmental guidelines (RoHS) in force at the time of its launch.



Once the product has reached the end of its lifespan, don't throw it in a dustbin. Return it to the retailer or bring it to a rubbish heap, to ensure the product is properly disposed of via a waste lectrical and electronic equipment (WEEE) channel.

Manufacturers Address:
4/F.,B Bldg.,Welyulong Industrial Park, No.16 Xuegang North Rd., Bantian Street, Longgang District, Shenzhen City, P.R.C.
Contact: Lucy.Lu
Telephone Number: +086-0755-23083456

<http://www.irulu.com>

FCC Warning

This device complies with Part 15 of the FCC Rules. Operation is subject to the following two conditions:

(1) This device may not cause harmful interference, and (2) this device must accept any interference received, including interference that may cause undesired operation.

NOTE 1: This equipment has been tested and found to comply with the limits for a Class B digital device, pursuant to part 15 of the FCC Rules. These limits are designed to provide reasonable protection against harmful interference in a residential installation. This equipment generates, uses and can radiate radio frequency energy and, if not installed and used in accordance with the instructions, may cause harmful interference to radio communications. However, there is no guarantee that interference will not occur in a particular installation. If this equipment does cause harmful interference to radio or television reception, which can be determined by turning the equipment off and on, the user is encouraged to try to correct the interference by one or more of the following measures:

- Reorient or relocate the receiving antenna.
- Increase the separation between the equipment and receiver.
- Connect the equipment into an outlet on a circuit different from that to which the receiver is connected.
- Consult the dealer or an experienced radio/TV technician for help.

NOTE 2: Any changes or modifications to this unit not expressly approved by the party responsible for compliance could void the user's authority to operate the equipment.