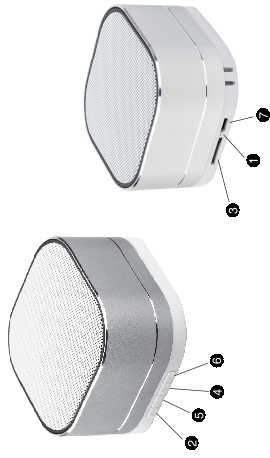


Function Keys



1. Mic
2. ON/OFF
3. TF Card Slot
4. Mode Switch/FM Radio/Play/Pause
5. Vol-/Previous Song
6. Vol+/Next Song
7. USB Charging port

1. ON/OFF

Press left power button to power on. Audio start up noise and blue light will come on and rapidly flash while looking for Bluetooth connection. Press and hold left power button to power off.

2. Bluetooth Connection

Follow the operating instructions of your Bluetooth device for pairing with the speaker. Typically this is done by going to the "Bluetooth", "Set Up" or "Connect" menu and selecting the option to search for Bluetooth devices.

When pairing, the blue light will blink rapidly; use smartphone or computer to search name "XIMUSIC", click to connect and blue light should change to solid blue once connection is successful. Blue light will blink rapidly when device is out of range.

3. Playing Music

1. Press "M" button to pause music or answer a call. A second press of "M" button will resume music.
2. Press Volume "+, -" once to play previous song.
3. Press Volume "+, -" once to play next song.

4. Press and hold Volume "+, -" to reduce speaker volume. A sound will notate lowest volume.
5. Press and hold Volume "+, -" to increase speaker volume. A sound will notate highest level.

4. Hands free phone call operation

1. With incoming phone calls, the blue light on speaker will blink until the call is either answered or ignored. Answer call by pressing "M" button. Ignore call by pressing and holding "M" button.
2. When on an active call, press "M" to hang up.
3. Hold and press "M" to redial last call when speaker is on standby mode.
4. Answered calls will automatically sound from speaker. Speaker also has microphone to hear speaking.
5. To switch to phone while on active call, press and hold "M" button for 1 second. Press and hold "M" button while on active call to switch back to speaker as well.

5. Mode Switch (Bluetooth – Micro SD Card – AUX – FM)

When speaker is on with Micro SD card inserted, click "M" button to switch through different modes one by one in this order: Bluetooth – Micro SD – FM radio – AUX – Bluetooth.

(FM Radio: Connect the included USB cable to be FM Antenna, press and hold "M" button to auto tune and search for stations. Blue light will blink until auto search is complete.)

6. Charging

Connect the USB charging cable to the speaker's Micro USB port, insert USB end into the USB port of a 5V charger. A red light illuminates while charging and turns off when fully charged.

7. Restore to Factory Settings

In Bluetooth mode, press and hold "M" button for at least 3 seconds, the blue light will blink rapidly, restoring the speaker to factory settings.

ATTENTION

1. To avoid damage to your hearing and also preserve battery life of speaker, do not listen to music for long periods at a very high volume.
2. When any fault or glitch occurs in speaker, turn off immediately and unplug from charging (if plugged in) to prevent speaker and other components from damage.
3. Low battery life will affect Bluetooth distance range. Keep charged.

NOTE: This equipment has been tested and found to comply with the limits for a Class B digital device, pursuant to part 15 of the FCC Rules. These limits are designed to provide reasonable protection against harmful interference in a residential installation. This equipment generates uses and can radiate radio frequency energy and, if not installed and used in accordance with the instructions, may cause harmful interference to radio communications. However, there is no guarantee that interference will not occur in a particular installation. If this equipment does cause harmful interference to radio or television reception, which can be determined by turning the equipment off and on, the user is encouraged to try to correct the interference by one or more of the following measures:

- Reorient or relocate the receiving antenna.
- Increase the separation between the equipment and receiver.
- Connect the equipment into an outlet on a circuit different from that to which the receiver is connected.
- Consult the dealer or an experienced radio/TV technician for help

Changes or modifications not expressly approved by the party responsible for compliance could void the user's authority to operate the equipment. This device complies with Part 15 of the FCC Rules. Operation is subject to the following two conditions:

- (1) this device may not cause harmful interference, and
- (2) this device must accept any interference received, including interference that may cause undesired operation.