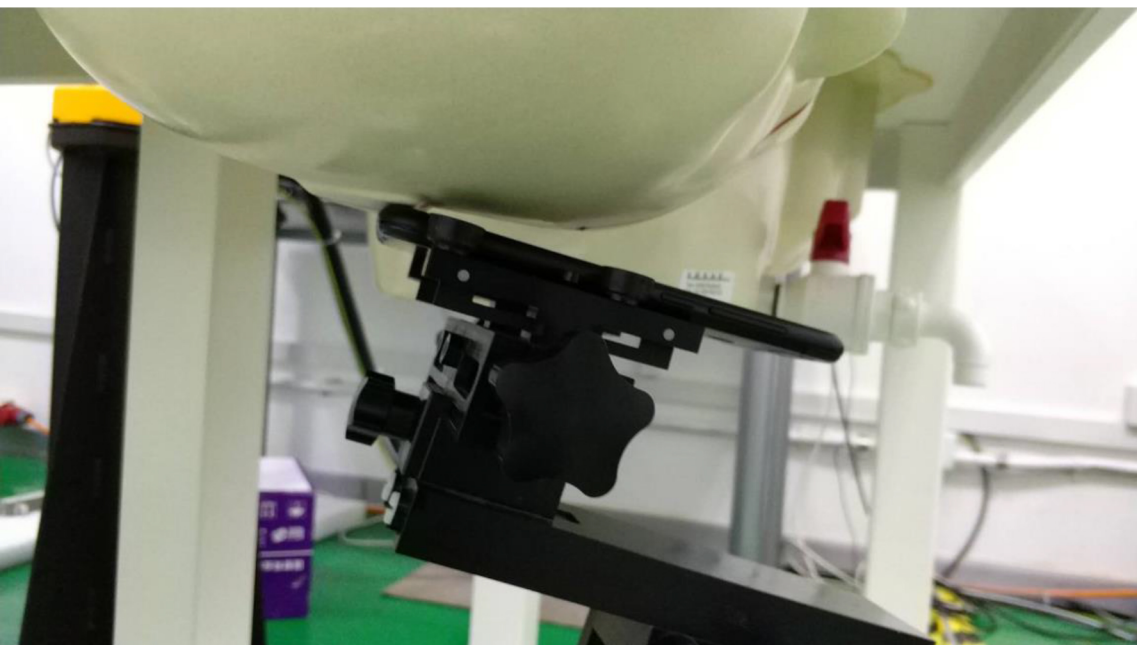


Right Head Touch Cheek Position



Right Head Tilt 15° Position



Left Head Touch Cheek Position



Left Head Tilt 15° Position

Test positions for body:

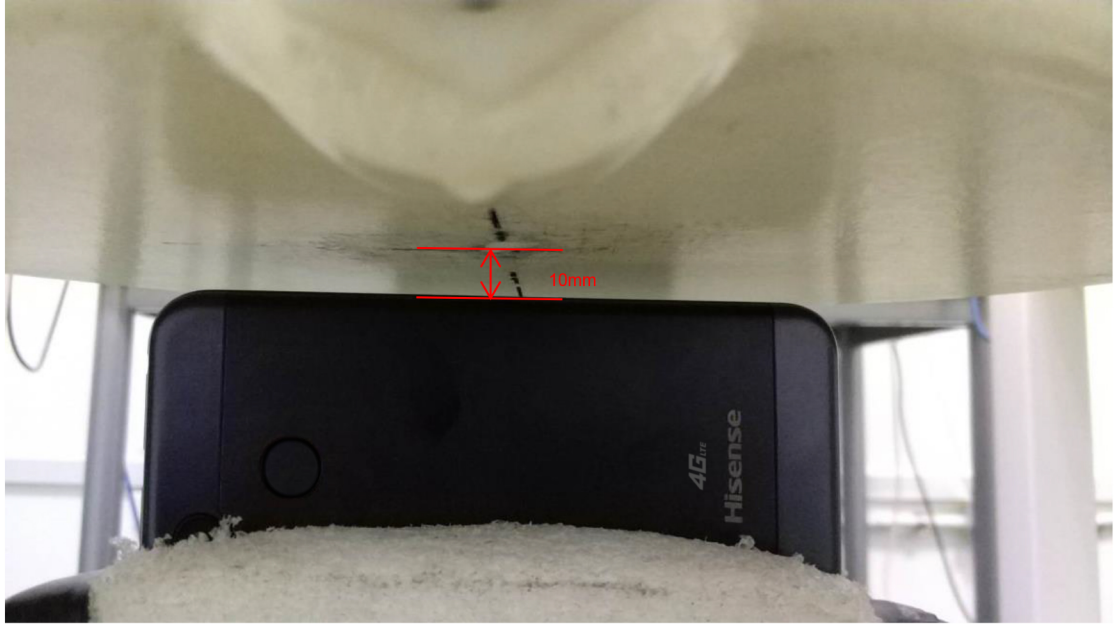
According to the antenna position, the Body SAR is tested at the following 6 test positions all with the distance = 10mm between the EUT and the phantom bottom :



Toward Bottom



Toward Top



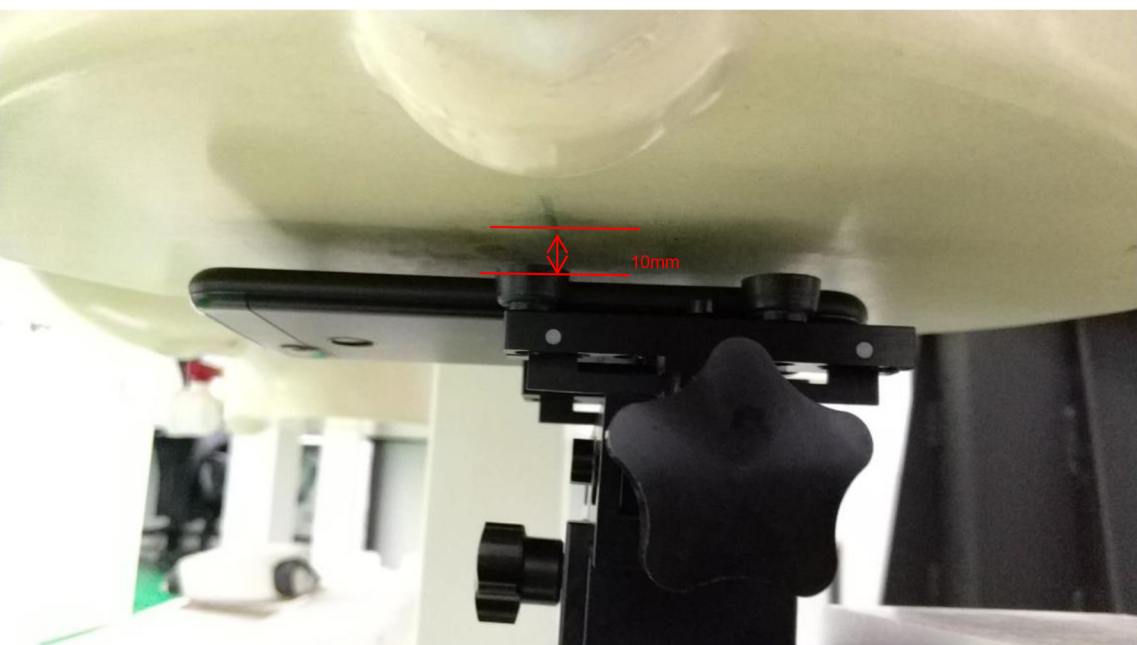
Toward Left



Toward Right



Toward Phantom



Toward Ground