

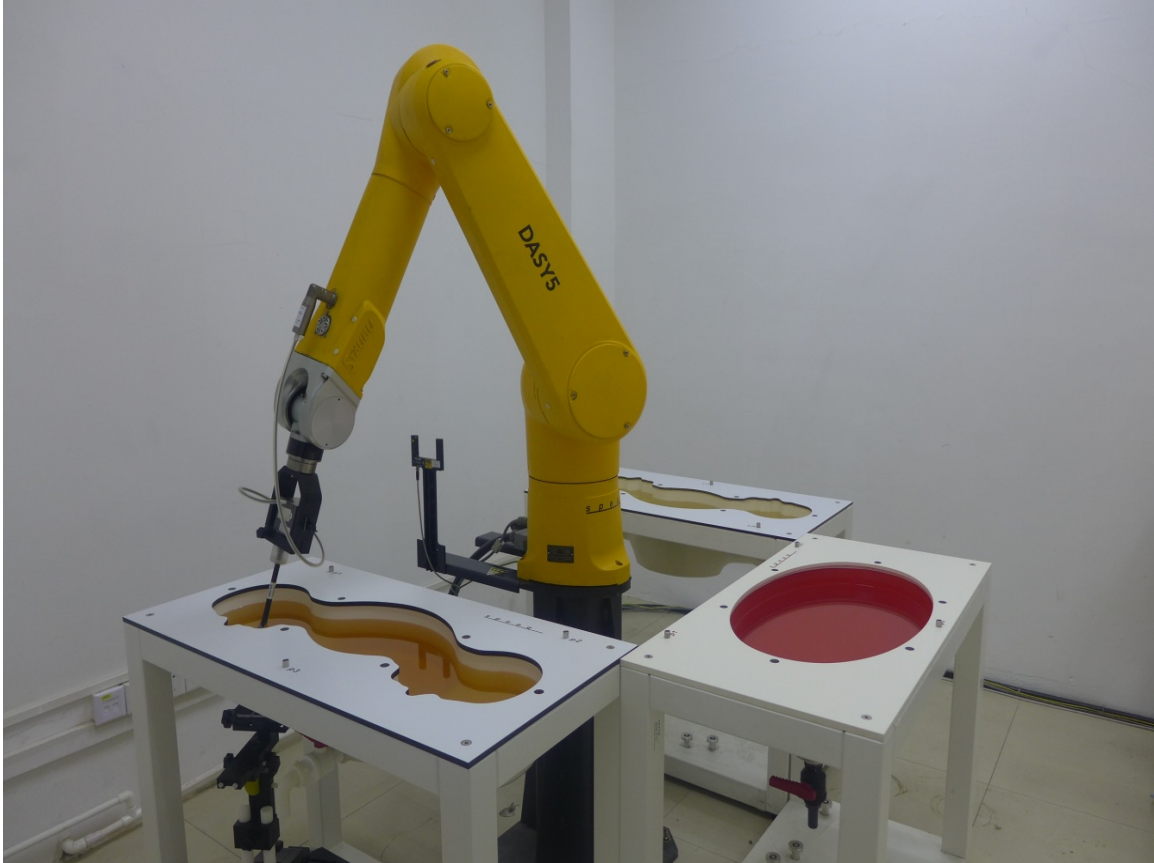


Appendix D

Photographs

1. SAR measurement System
2. Photographs of Tissue Simulate Liquid
3. Photographs of EUT test position
4. EUT Constructional Details

1. SAR measurement System



2. Photographs of Tissue Simulate Liquid

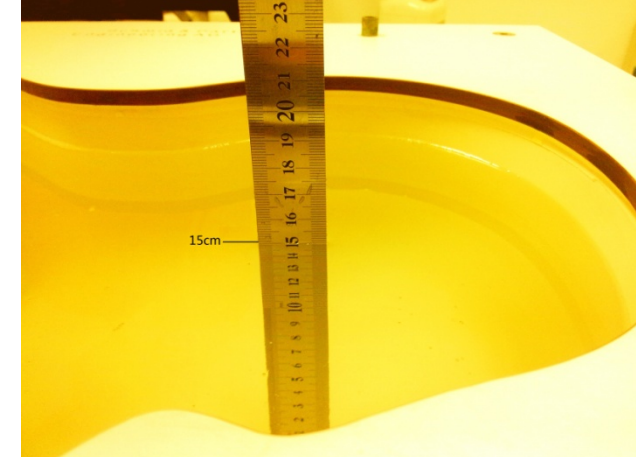
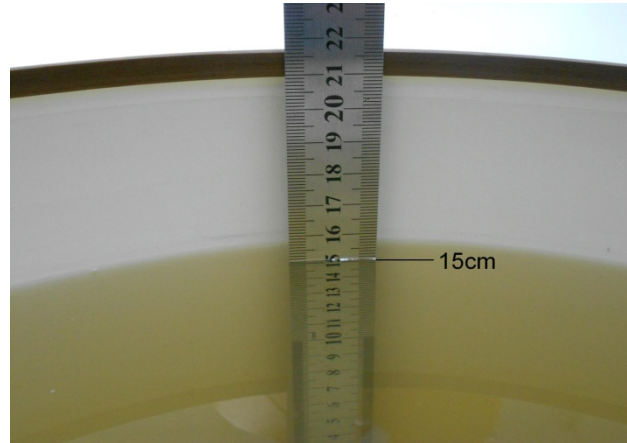
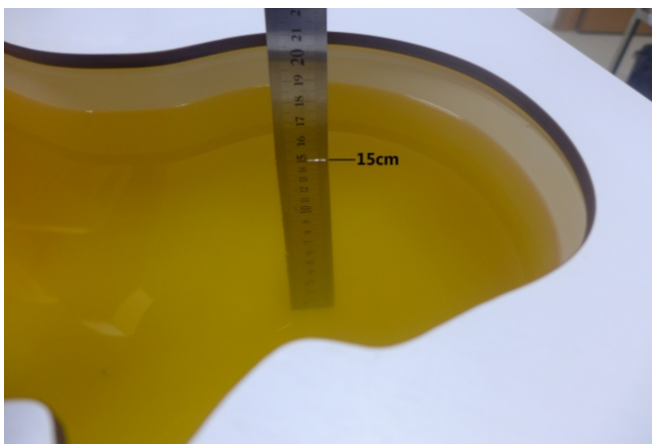
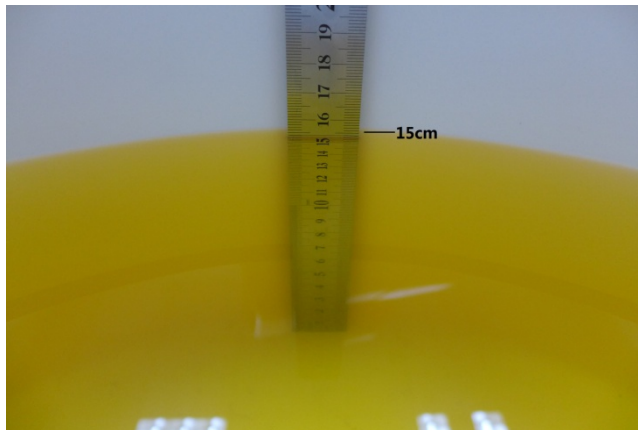
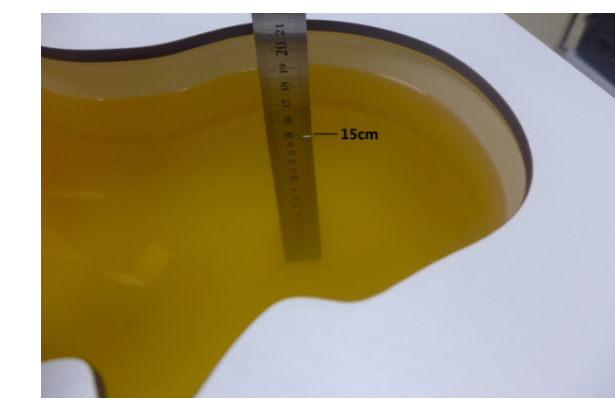
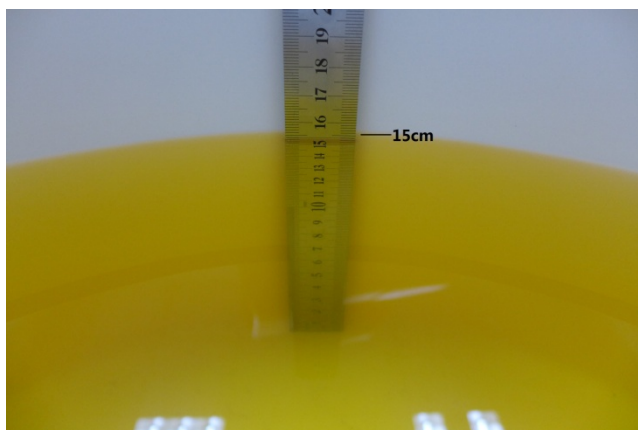
<p>Photo 1: Tissue Simulant Liquid for Head 835</p> 	<p>Photo 2: Tissue Simulant Liquid for Body 835</p> 
<p>Photo 3: Tissue Simulant Liquid for Head 1750</p> 	<p>Photo 4: Tissue Simulant Liquid for Body 1750</p> 
<p>Photo 5: Tissue Simulant Liquid for Head 1900</p> 	<p>Photo 6: Tissue Simulant Liquid for Body 1900</p> 

Photo 7: Tissue Simulant Liquid for Head 2450

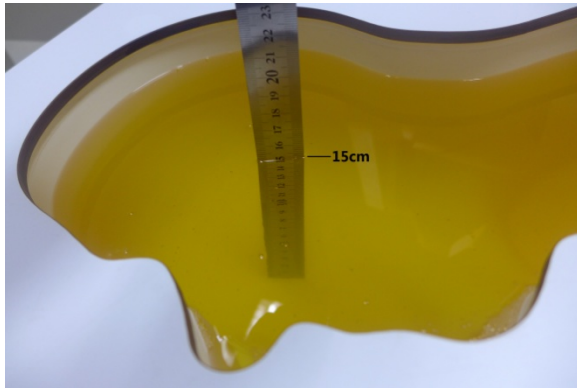


Photo 8: Tissue Simulant Liquid for Body 2450

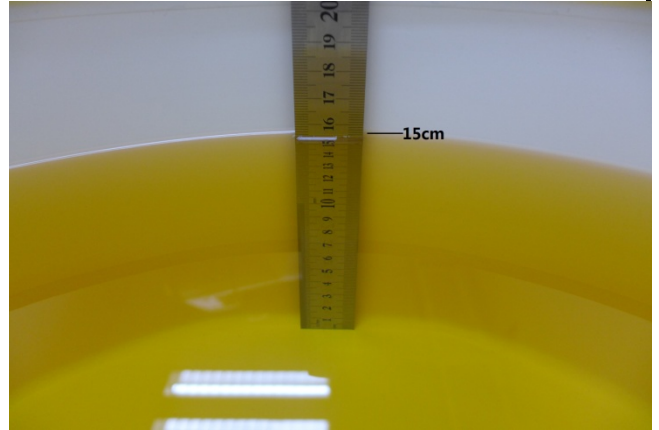


Photo 9: Tissue Simulant Liquid for Head 2600

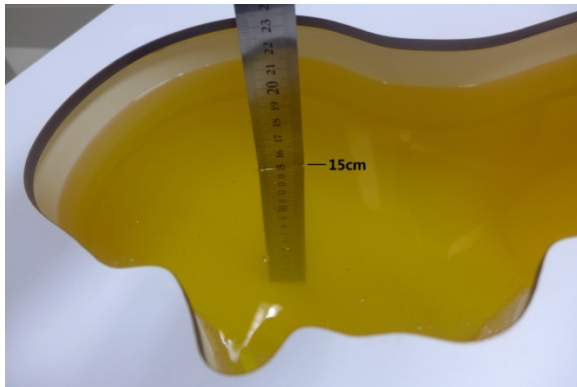
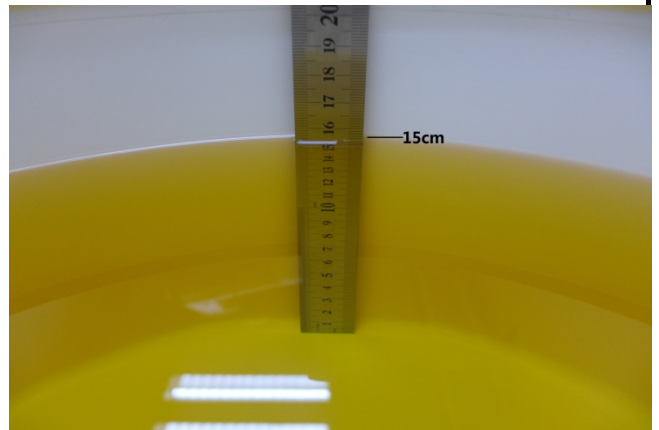

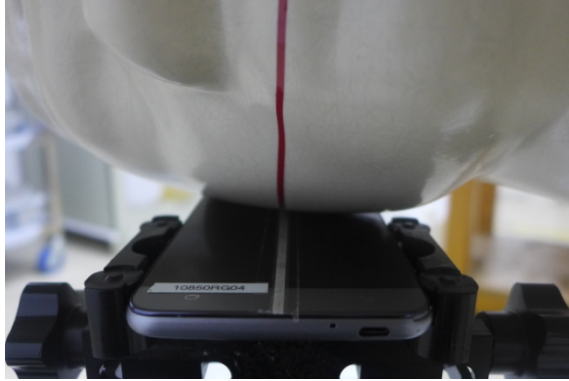
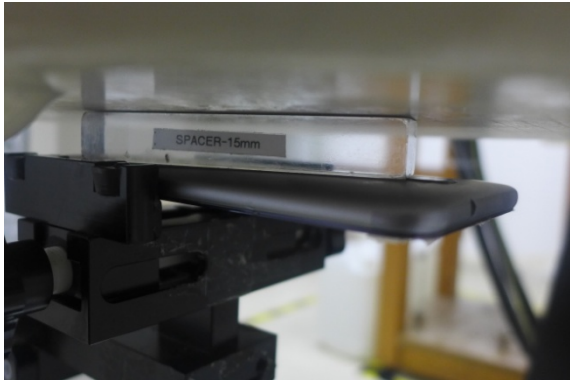
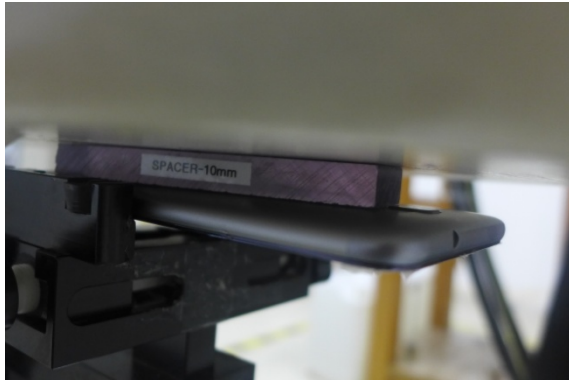
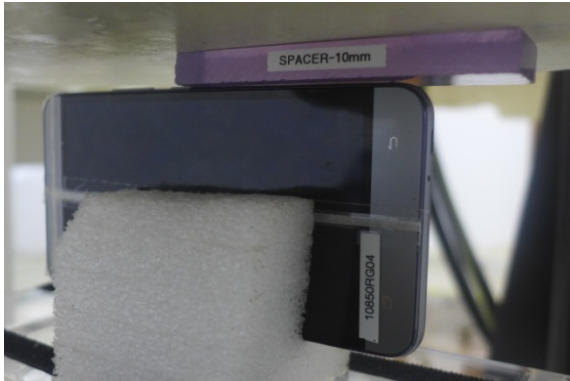





Photo 10: Tissue Simulant Liquid for Body 2600



3. Photographs of EUT test position

<p>Photo 11: Left touch cheek</p>	<p>Photo 12: Right touch cheek</p>
	
<p>Photo 13: Back side 15mm</p>	<p>Photo 14: Back side 10mm</p>
	
<p>Photo 15: Right side 10mm</p>	<p>Photo 16: Bottom side 10mm</p>
	

4. EUT Constructional Details

<p align="center">Photo 17: Front View</p>	<p align="center">Photo 18: Back View</p>
	
<p align="center">Photo 19: Accessory</p>	<p align="center">Photo 20: location of antennas</p>
