

918 MHz

Frequency: 918 MHz; Duty Cycle: 1:1; Room Ambient Temperature: 24.0°C; Liquid Temperature: 23.0°C
 Medium parameters used (interpolated): $f = 918$ MHz; $\sigma = 0.972$ S/m; $\epsilon_r = 42.754$; $\rho = 1000$ kg/m³

DASY5 Configuration:

- Area Scan Setting: Find Secondary Maximum Within: 2.0 dB and with a peak SAR value greater than 0.0012W/kg
- Electronics: DAE4 Sn1239; Calibrated: 7/11/2018
- Probe: EX3DV4 - SN7500; ConvF(9.61, 9.61, 9.61) @ 918 MHz; Calibrated: 4/18/2019
- Sensor-Surface: 2mm (Mechanical Surface Detection (Locations From Previous Scan Used)), Sensor-Surface: 2mm (Mechanical Surface Detection)
- Phantom: Twin-SAM V8.0 (20deg probe tilt); Type: QD 000 P41 AA; Serial: 1948

Top/918MHz CW/ 5cm /2W per port/Area Scan (11x11x1): Measurement grid: dx=15mm, dy=15mm

[Info: Interpolated medium parameters used for SAR evaluation.](#)

Maximum value of SAR (measured) = 0.639 W/kg

Top/918MHz CW/ 5cm /2W per port/Zoom Scan (5x5x7)/Cube 0: Measurement grid: dx=8mm, dy=8mm, dz=5mm

Reference Value = 15.68 V/m; Power Drift = 0.01 dB

Peak SAR (extrapolated) = 0.744 W/kg

SAR(1 g) = 0.550 W/kg; SAR(10 g) = 0.396 W/kg

[Info: Interpolated medium parameters used for SAR evaluation.](#)

Maximum value of SAR (measured) = 0.654 W/kg

Top/918MHz CW/ 5cm /2W per port/Zoom Scan 2 (5x6x7)/Cube 0: Measurement grid: dx=8mm, dy=8mm, dz=5mm

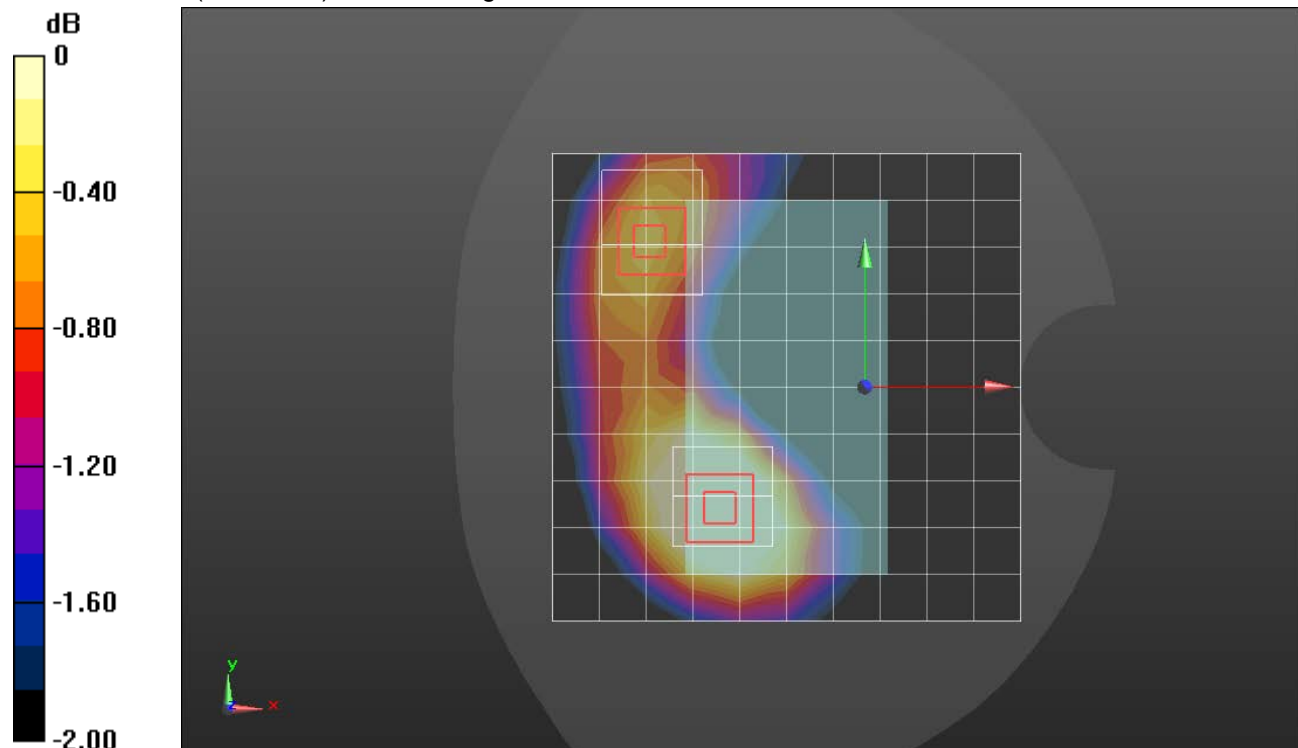
Reference Value = 15.68 V/m; Power Drift = 0.01 dB

Peak SAR (extrapolated) = 0.613 W/kg

SAR(1 g) = 0.470 W/kg; SAR(10 g) = 0.350 W/kg

[Info: Interpolated medium parameters used for SAR evaluation.](#)

Maximum value of SAR (measured) = 0.551 W/kg



0 dB = 0.551 W/kg = -2.59 dBW/kg