

5GHz

Frequency: 5862.5 MHz; Duty Cycle: 1:1; Room Ambient Temperature: 24.0°C; Liquid Temperature: 23.0°C
 Medium parameters used (interpolated): $f = 5862 \text{ MHz}$; $\sigma = 6.19 \text{ S/m}$; $\epsilon_r = 47.066$; $\rho = 1000 \text{ kg/m}^3$

DASY5 Configuration:

- Area Scan Setting: Find Secondary Maximum Within: 2.0 dB and with a peak SAR value greater than 0.0012W/kg
- Electronics: DAE4 Sn1258; Calibrated: 5/10/2016
- Probe: EX3DV4 - SN3773; ConvF(3.64, 3.64, 3.64); Calibrated: 4/19/2016;
- Sensor-Surface: 2mm (Mechanical Surface Detection (Locations From Previous Scan Used)), Sensor-Surface: 2mm (Mechanical Surface Detection)
- Phantom: ELI-B v5.0; Type: QDOVA002AA; Serial: TP:1195

Top 5862.5 @100mm MLK I024E/Area Scan (14x14x1): Measurement grid: dx=10mm, dy=10mm

[Info: Interpolated medium parameters used for SAR evaluation.](#)

Maximum value of SAR (measured) = 0.793 W/kg

Top 5862.5 @100mm MLK I024E/Zoom Scan (10x9x12)/Cube 0: Measurement grid: dx=4mm, dy=4mm, dz=2mm

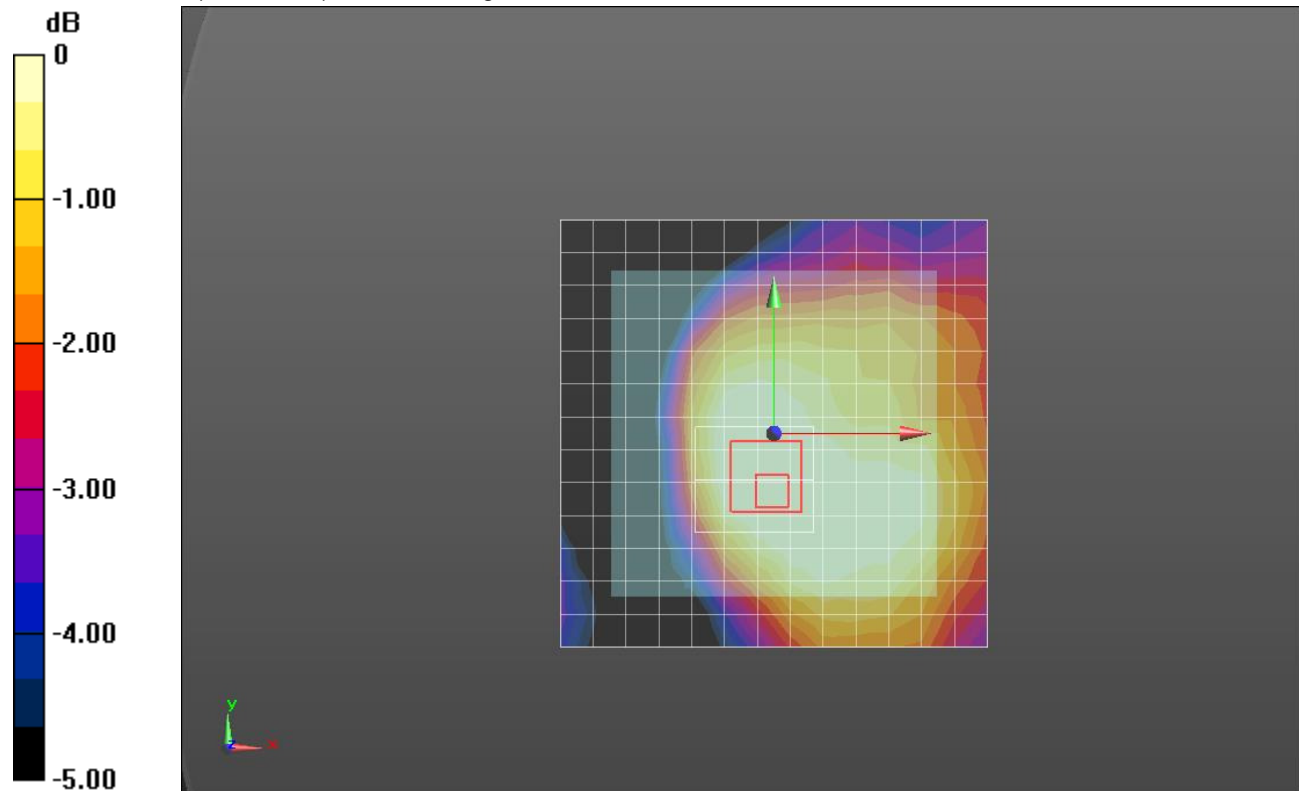
Reference Value = 10.975 V/m; Power Drift = -0.18 dB

Peak SAR (extrapolated) = 1.39 W/kg

SAR(1 g) = 0.390 W/kg; SAR(10 g) = 0.178 W/kg

[Info: Interpolated medium parameters used for SAR evaluation.](#)

Maximum value of SAR (measured) = 0.722 W/kg



0 dB = 0.722 W/kg = -1.41 dBW/kg