

913 CW Y-Z RF-Field Plot

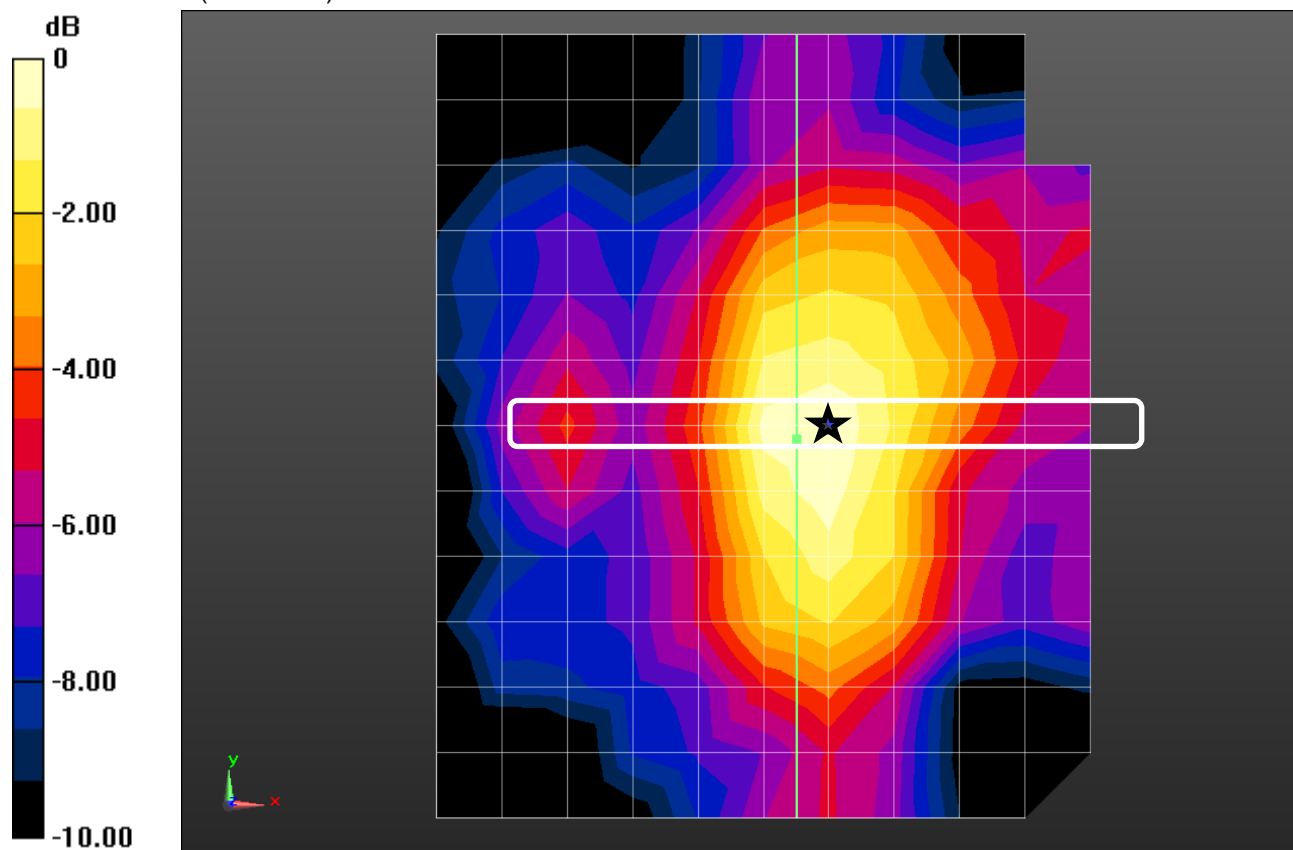
Frequency: 913 MHz; Duty Cycle: 1:1; Room Ambient Temperature: 24.0°C; Liquid Temperature: 23.0°C
 Medium parameters used: $\sigma = 0$ S/m, $\epsilon_r = 1$; $\rho = 0$ kg/m³

DASY5 Configuration:

- Area Scan Setting: Find Secondary Maximum Within: 2.0 dB and with a peak SAR value greater than 0.0012W/kg
- Electronics: DAE4 Sn1359; Calibrated: 2/10/2017
- Probe: EF3DV3 - SN4041; ConvF(1, 1, 1); Calibrated: 3/14/2017;
- Sensor-Surface: 0mm (Fix Surface)
- Phantom: Z Scans; ;

913MHz/Start 400mm /TX 5 0 Degrees 0mm Offset/400mm_0 degrees/ Pocket 2/Pre Area Scan (121x121x1): Interpolated grid: dx=8.000 mm, dy=8.000 mm, dz=20.00 mm
 Maximum value of Total (interpolated) = 77.70 V/m

913MHz/Start 400mm /TX 5 0 Degrees 0mm Offset/400mm_0 degrees/ Pocket 2/Pre Area Scan (13x13x1): Measurement grid: dx=80mm, dy=80mm, dz=20mm
 Maximum value of Total (measured) = 75.42 V/m



0 dB = 75.42 V/m = 37.55 dBV/m

913 CW Z RF-Field Plot

Frequency: 913 MHz; Duty Cycle: 1:1

913MHz/Start 400mm /TX5 0 Degrees 0mm Offset/400mm_0 degrees/ Pocket 2/Pre Area Scan (121x121x1):

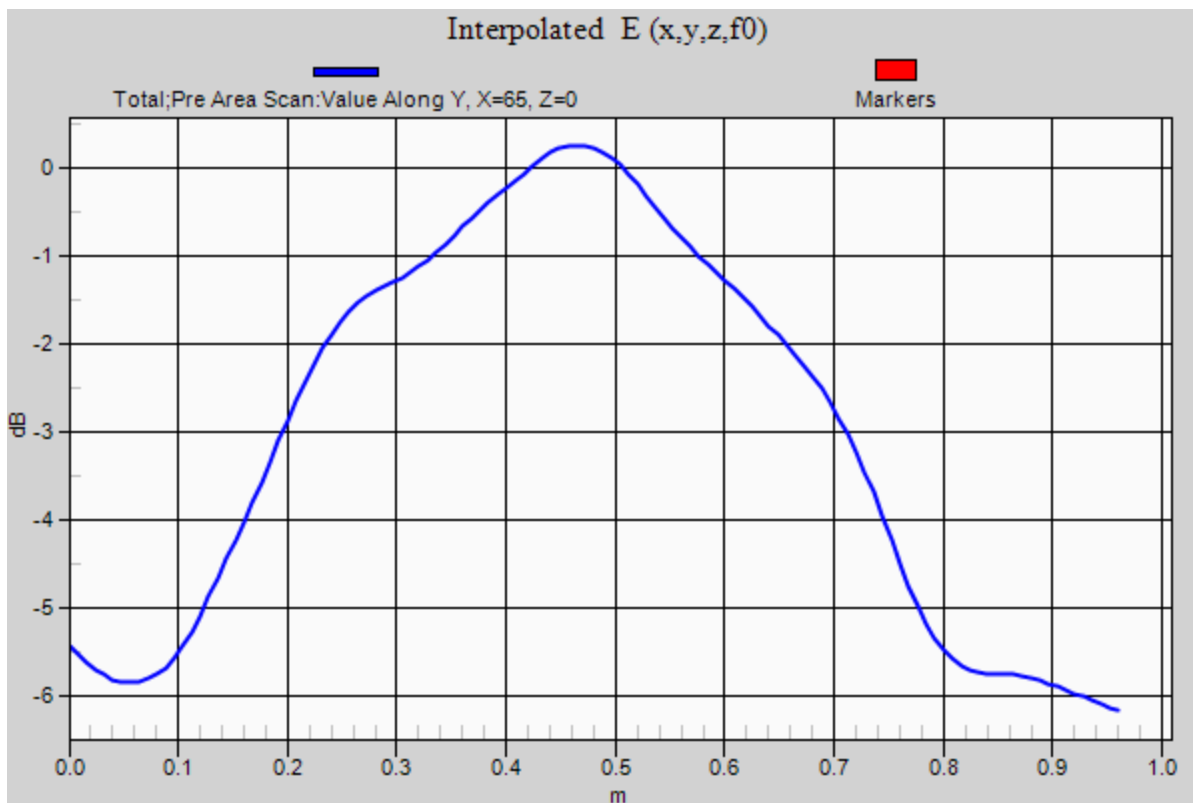
Interpolated grid: dx=8.000 mm, dy=8.000 mm, dz=20.00 mm

Maximum value of Total (interpolated) = 77.70 V/m

913MHz/Start 400mm /TX5 0 Degrees 0mm Offset/400mm_0 degrees/ Pocket 2/Pre Area Scan (13x13x1):

Measurement grid: dx=80mm, dy=80mm, dz=20mm

Maximum value of Total (measured) = 75.42 V/m



913 CW Y-Z RF-Field Plot

Frequency: 913 MHz; Duty Cycle: 1:1; Room Ambient Temperature: 24.0°C; Liquid Temperature: 23.0°C
 Medium parameters used: $\sigma = 0$ S/m, $\epsilon_r = 1$; $\rho = 0$ kg/m³

DASY5 Configuration:

- Area Scan Setting: Find Secondary Maximum Within: 2.0 dB and with a peak SAR value greater than 0.0012W/kg
- Electronics: DAE4 Sn1359; Calibrated: 2/10/2017
- Probe: EF3DV3 - SN4041; ConvF(1, 1, 1); Calibrated: 3/14/2017;
- Sensor-Surface: 0mm (Fix Surface)
- Phantom: Z Scans; ;

913MHz/Start 346mm/TX 5 0 Degrees 0mm Offset/400mm_+30 degrees/ Pocket 4/Pre

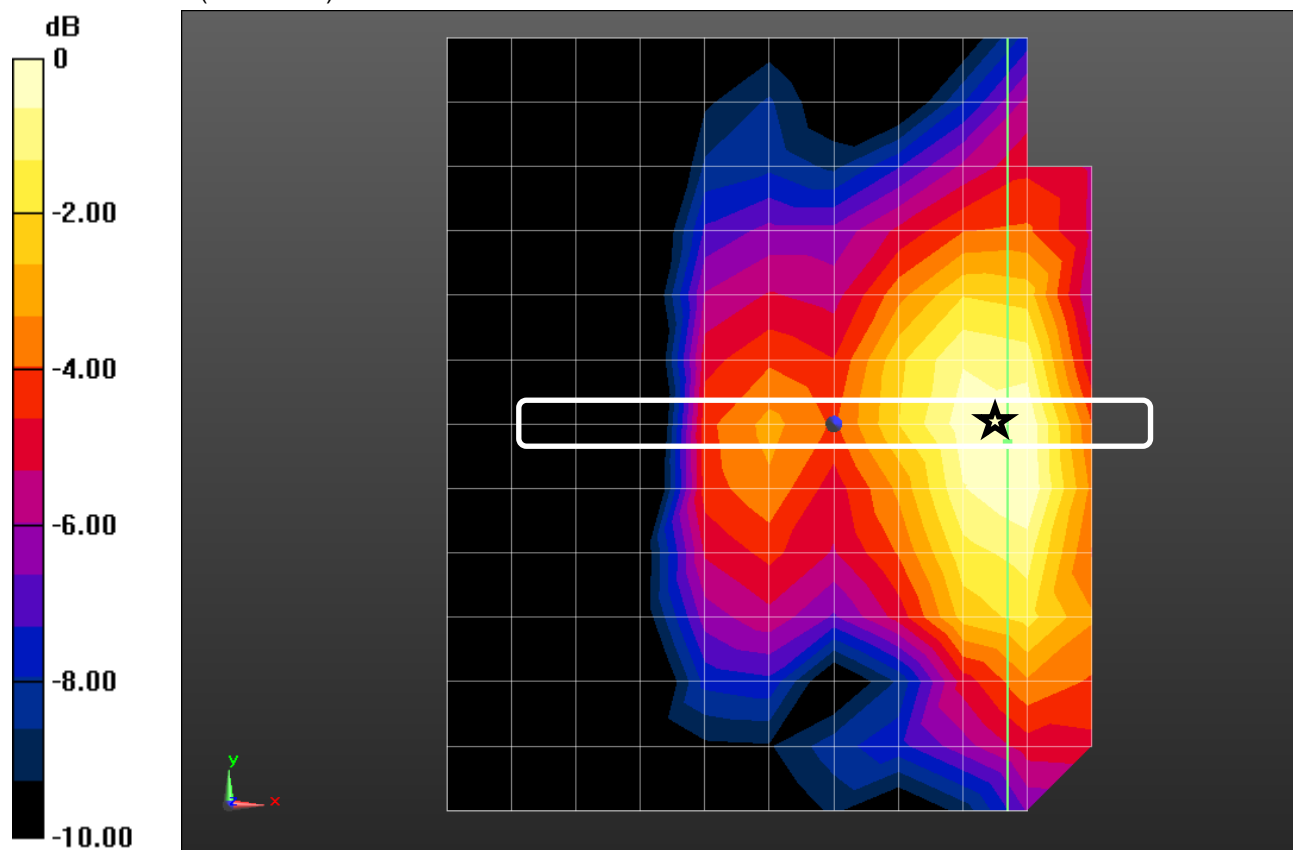
Area Scan (121x121x1): Interpolated grid: dx=8.000 mm, dy=8.000 mm, dz=20.00 mm

Maximum value of Total (interpolated) = 81.32 V/m

913MHz/Start 346mm/TX 5 0 Degrees 0mm Offset/400mm_+30 degrees/ Pocket 4/Pre

Area Scan (13x13x1): Measurement grid: dx=80mm, dy=80mm, dz=20mm

Maximum value of Total (measured) = 77.74 V/m



0 dB = 77.74 V/m = 37.81 dBV/m

913 CW Z RF-Field Plot

Frequency: 913 MHz; Duty Cycle: 1:1

913MHz/Start 346mm/TX5 0 Degrees 0mm Offset/400mm_+30 degrees/ Pocket 4/Pre

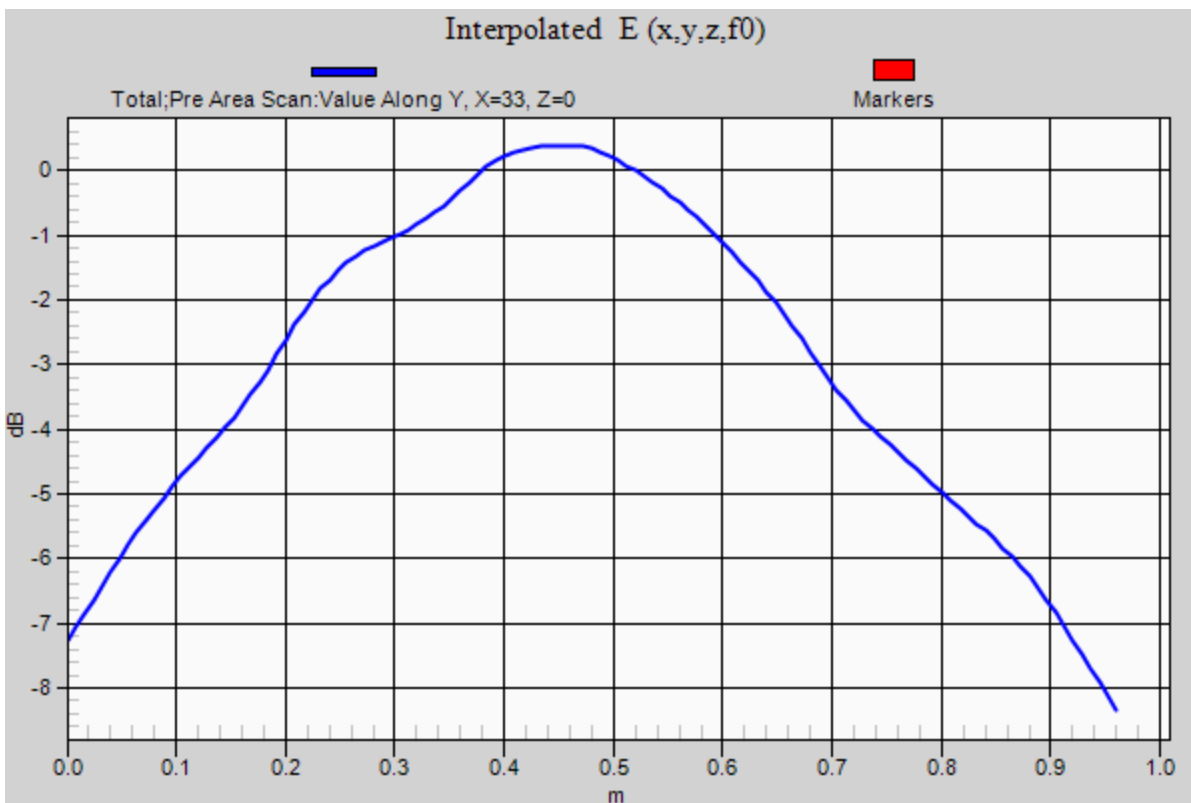
Area Scan (121x121x1): Interpolated grid: dx=8.000 mm, dy=8.000 mm, dz=20.00 mm

Maximum value of Total (interpolated) = 81.32 V/m

913MHz/Start 346mm/TX5 0 Degrees 0mm Offset/400mm_+30 degrees/ Pocket 4/Pre

Area Scan (13x13x1): Measurement grid: dx=80mm, dy=80mm, dz=20mm

Maximum value of Total (measured) = 77.74 V/m



913 CW Y-Z RF-Field Plot

Frequency: 913 MHz; Duty Cycle: 1:1; Room Ambient Temperature: 24.0°C; Liquid Temperature: 23.0°C
 Medium parameters used: $\sigma = 0$ S/m, $\epsilon_r = 1$; $\rho = 0$ kg/m³

DASY5 Configuration:

- Area Scan Setting: Find Secondary Maximum Within: 2.0 dB and with a peak SAR value greater than 0.0012W/kg
- Electronics: DAE4 Sn1359; Calibrated: 2/10/2017
- Probe: EF3DV3 - SN4041; ConvF(1, 1, 1); Calibrated: 3/14/2017;
- Sensor-Surface: 0mm (Fix Surface)
- Phantom: Z Scans; ;

913MHz/Start 346mm/TX 5 0 Degrees 0mm Offset/400mm_-30 degrees/ Pocket 0/Pre

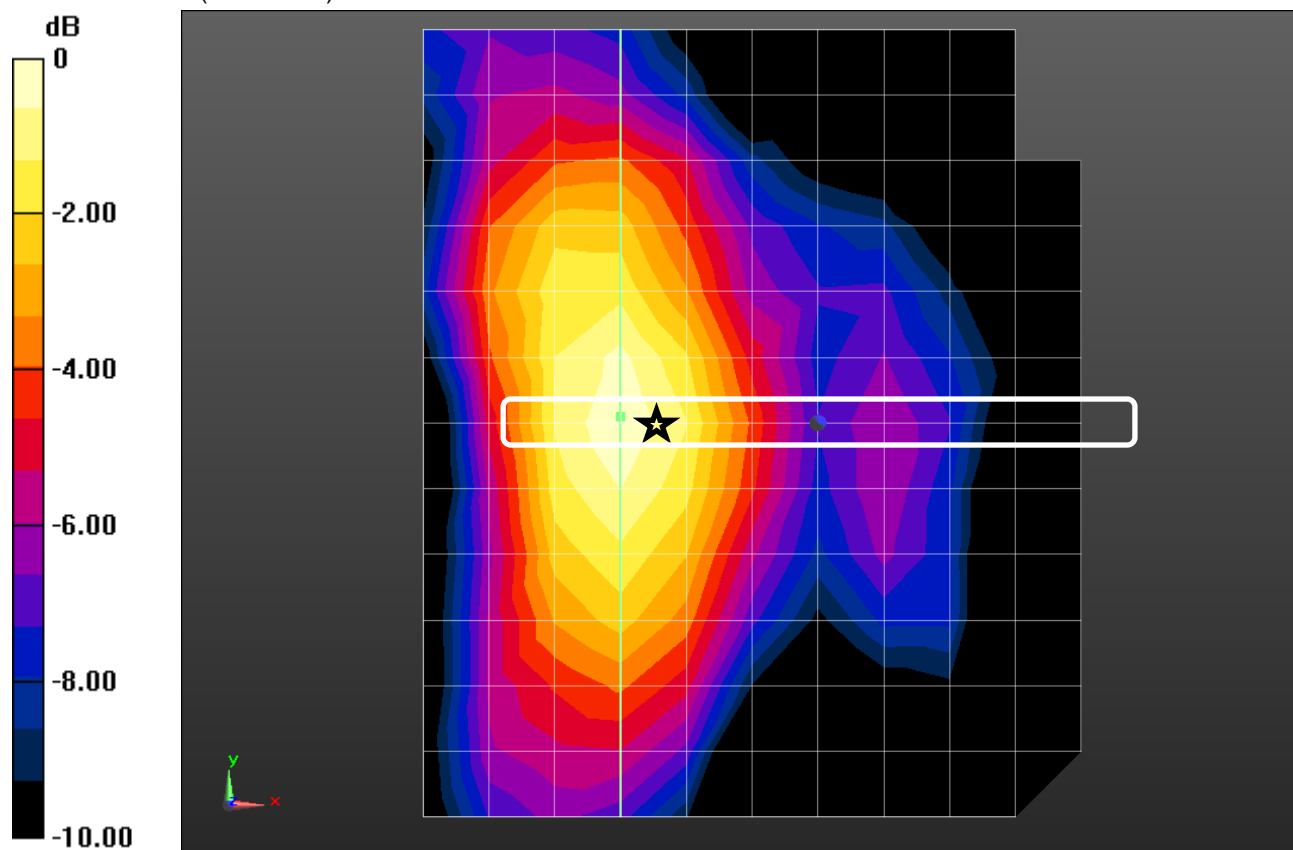
Area Scan (121x121x1): Interpolated grid: dx=8.000 mm, dy=8.000 mm, dz=20.00 mm

Maximum value of Total (interpolated) = 77.48 V/m

913MHz/Start 346mm/TX 5 0 Degrees 0mm Offset/400mm_-30 degrees/ Pocket 0/Pre

Area Scan (13x13x1): Measurement grid: dx=80mm, dy=80mm, dz=20mm

Maximum value of Total (measured) = 77.46 V/m



0 dB = 77.46 V/m = 37.78 dBV/m

913 CW Z RF-Field Plot

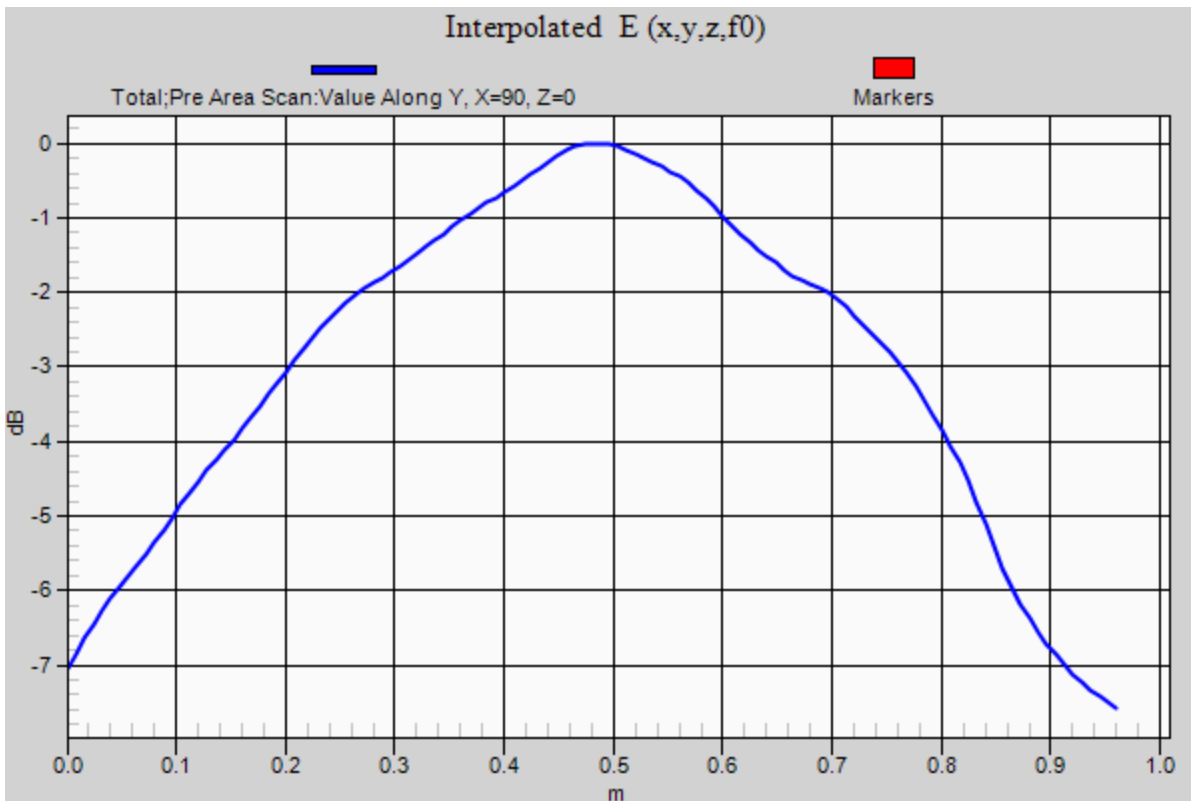
Frequency: 913 MHz; Duty Cycle: 1:1

913MHz/Start 346mm/TX5 0 Degrees 0mm Offset/400mm_-30 degrees/ Pocket 0/Pre Area Scan (121x121x1): Interpolated grid: dx=8.000 mm, dy=8.000 mm, dz=20.00 mm

Maximum value of Total (interpolated) = 77.48 V/m

913MHz/Start 346mm/TX5 0 Degrees 0mm Offset/400mm_-30 degrees/ Pocket 0/Pre Area Scan (13x13x1): Measurement grid: dx=80mm, dy=80mm, dz=20mm

Maximum value of Total (measured) = 77.46 V/m



913 CW Y-Z RF-Field Plot

Frequency: 913 MHz; Duty Cycle: 1:1; Room Ambient Temperature: 24.0°C; Liquid Temperature: 23.0°C

Medium parameters used: $\sigma = 0$ S/m, $\epsilon_r = 1$; $\rho = 0$ kg/m³

DASY5 Configuration:

- Area Scan Setting: Find Secondary Maximum Within: 2.0 dB and with a peak SAR value greater than 0.0012W/kg
- Electronics: DAE4 Sn1359; Calibrated: 2/10/2017
- Probe: EF3DV3 - SN4041; ConvF(1, 1, 1); Calibrated: 3/14/2017;
- Sensor-Surface: 0mm (Fix Surface)
- Phantom: Z Scans; ;

913MHz/Start 386mm/TX 5 0 Degrees 0mm Offset/400mm_+15 degrees/ Pocket 3/Pre

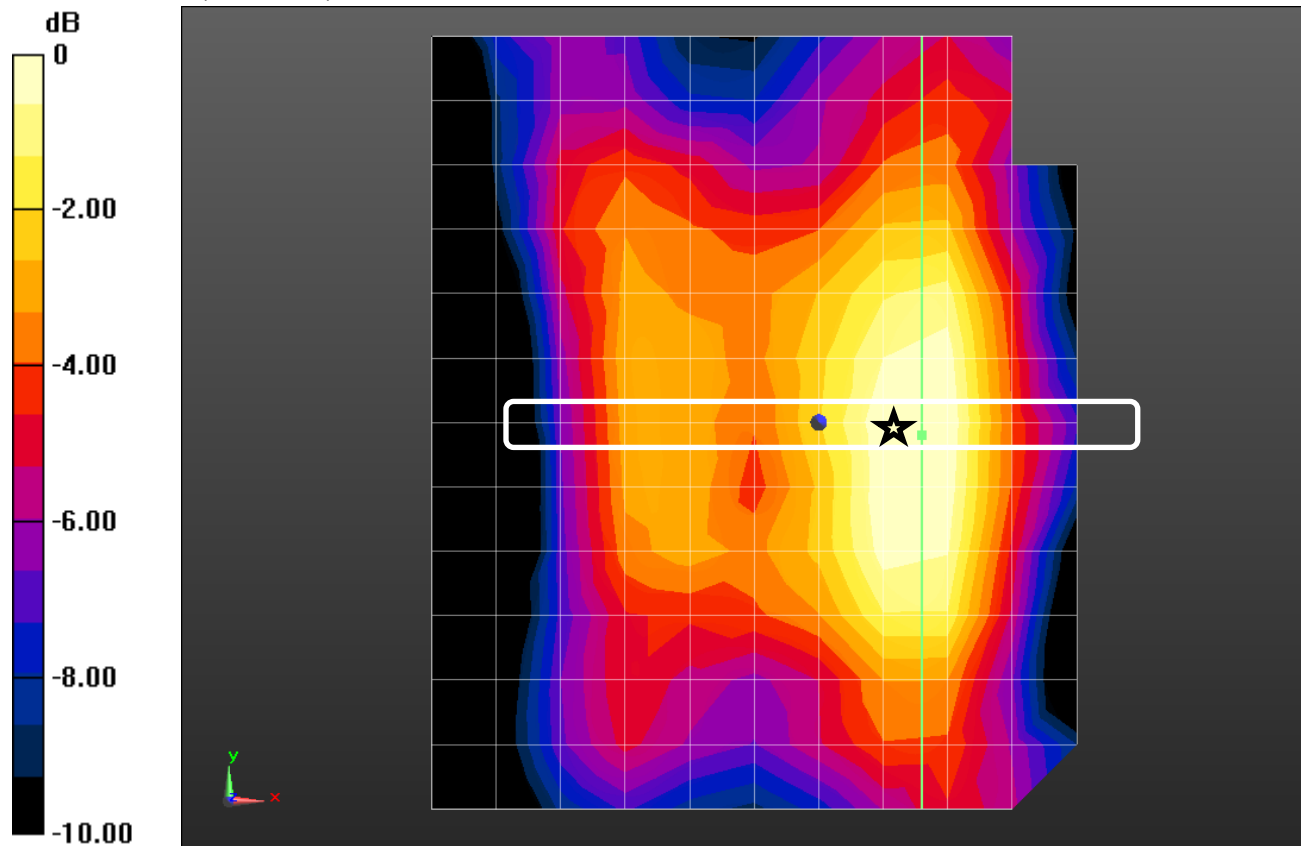
Area Scan (121x121x1): Interpolated grid: dx=8.000 mm, dy=8.000 mm, dz=20.00 mm

Maximum value of Total (interpolated) = 75.13 V/m

913MHz/Start 386mm/TX 5 0 Degrees 0mm Offset/400mm_+15 degrees/ Pocket 3/Pre

Area Scan (13x13x1): Measurement grid: dx=80mm, dy=80mm, dz=20mm

Maximum value of Total (measured) = 71.33 V/m



0 dB = 71.33 V/m = 37.07 dBV/m

913 CW Z RF-Field Plot

Frequency: 913 MHz; Duty Cycle: 1:1

913MHz/Start 386mm/TX5 0 Degrees 0mm Offset/400mm_+15 degrees/ Pocket 3/Pre

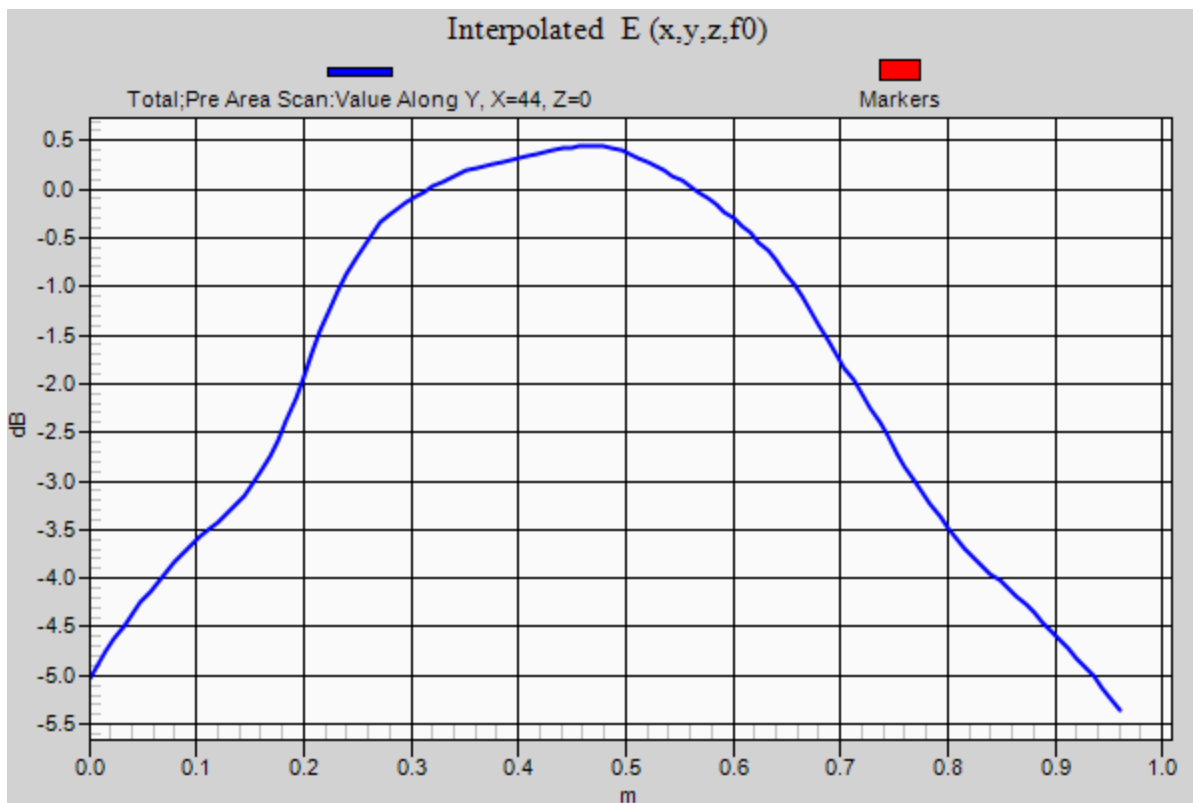
Area Scan (121x121x1): Interpolated grid: dx=8.000 mm, dy=8.000 mm, dz=20.00 mm

Maximum value of Total (interpolated) = 75.13 V/m

913MHz/Start 386mm/TX5 0 Degrees 0mm Offset/400mm_+15 degrees/ Pocket 3/Pre

Area Scan (13x13x1): Measurement grid: dx=80mm, dy=80mm, dz=20mm

Maximum value of Total (measured) = 71.33 V/m



913 CW Y-Z RF-Field Plot

Frequency: 913 MHz; Duty Cycle: 1:1; Room Ambient Temperature: 24.0°C; Liquid Temperature: 23.0°C
Medium parameters used: $\sigma = 0$ S/m, $\epsilon_r = 1$; $\rho = 0$ kg/m³

DASY5 Configuration:

- Area Scan Setting: Find Secondary Maximum Within: 2.0 dB and with a peak SAR value greater than 0.0012W/kg
- Electronics: DAE4 Sn1359; Calibrated: 2/10/2017
- Probe: EF3DV3 - SN4041; ConvF(1, 1, 1); Calibrated: 3/14/2017;
- Sensor-Surface: 0mm (Fix Surface)
- Phantom: Z Scans; ;

913MHz/Start 386mm/TX 5 0 Degrees 0mm Offset/400mm_-15 degrees/ Pocket 1/Pre

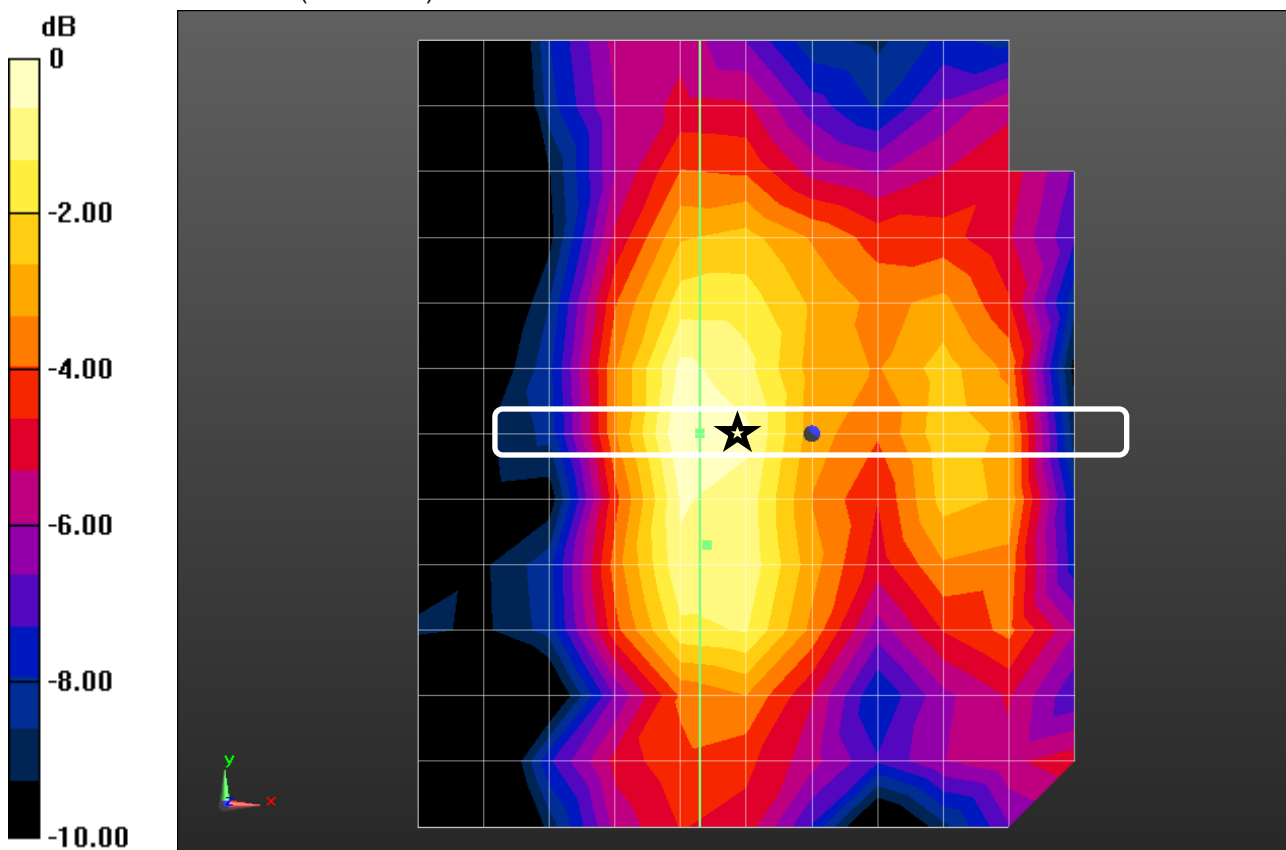
Area Scan (121x121x1): Interpolated grid: dx=8.000 mm, dy=8.000 mm, dz=20.00 mm

Maximum value of Total (interpolated) = 72.49 V/m

913MHz/Start 386mm/TX 5 0 Degrees 0mm Offset/400mm_-15 degrees/ Pocket 1/Pre

Area Scan (13x13x1): Measurement grid: dx=80mm, dy=80mm, dz=20mm

Maximum value of Total (measured) = 69.96 V/m



0 dB = 69.96 V/m = 36.90 dBV/m

913 CW Z RF-Field Plot

Frequency: 913 MHz; Duty Cycle: 1:1

913MHz/Start 386mm/TX5 0 Degrees 0mm Offset/400mm_-15 degrees/ Pocket 1/Pre Area Scan (121x121x1):

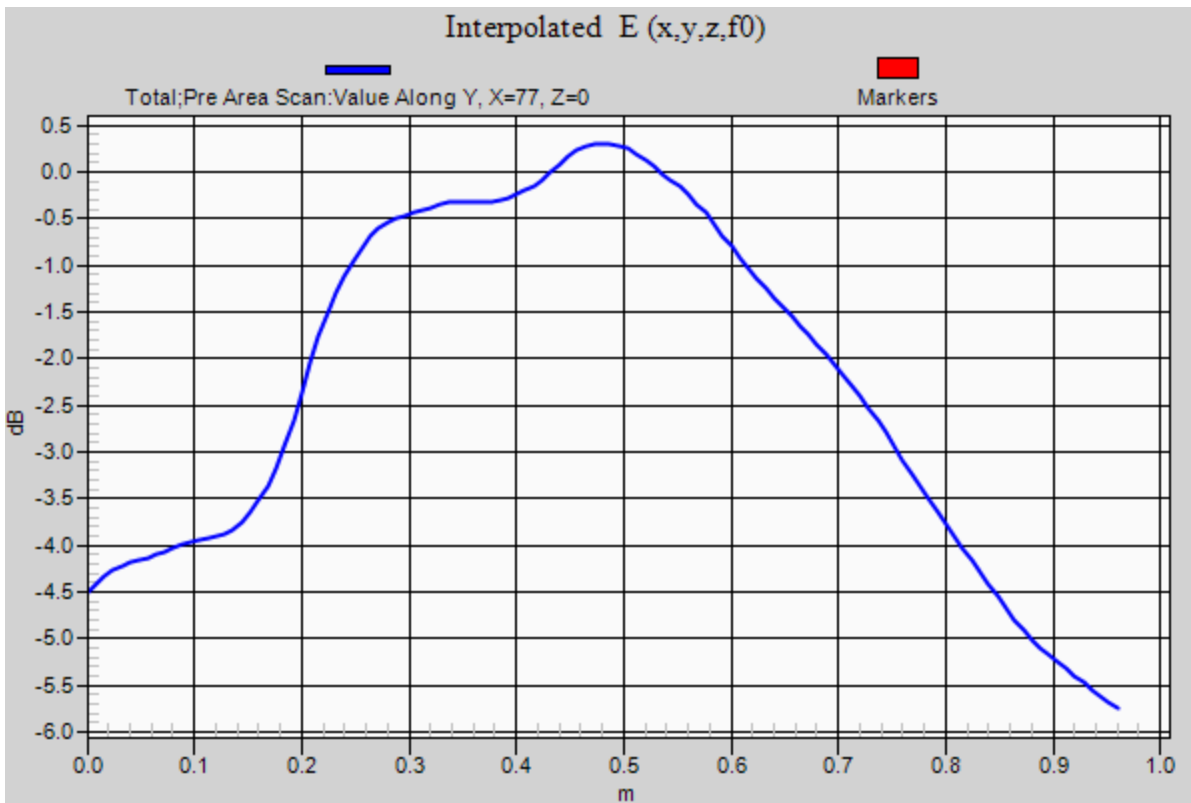
Interpolated grid: dx=8.000 mm, dy=8.000 mm, dz=20.00 mm

Maximum value of Total (interpolated) = 72.49 V/m

913MHz/Start 386mm/TX5 0 Degrees 0mm Offset/400mm_-15 degrees/ Pocket 1/Pre Area Scan (13x13x1):

Measurement grid: dx=80mm, dy=80mm, dz=20mm

Maximum value of Total (measured) = 69.96 V/m



913 CW Y-Z RF-Field Plot

Frequency: 913 MHz; Duty Cycle: 1:1; Room Ambient Temperature: 24.0°C; Liquid Temperature: 23.0°C
 Medium parameters used: $\sigma = 0 \text{ S/m}$, $\epsilon_r = 1$; $\rho = 0 \text{ kg/m}^3$

DASY5 Configuration:

- Area Scan Setting: Find Secondary Maximum Within: 2.0 dB and with a peak SAR value greater than 0.0012W/kg
- Electronics: DAE4 Sn1359; Calibrated: 2/10/2017
- Probe: EF3DV3 - SN4041; ConvF(1, 1, 1); Calibrated: 3/14/2017;
- Sensor-Surface: 0mm (Fix Surface)
- Phantom: Z Scans; ;

913MHz/start 500mm/TX5 0 Degrees 0mm Offset/500mm_0 degrees/ Pocket 15/Pre Area

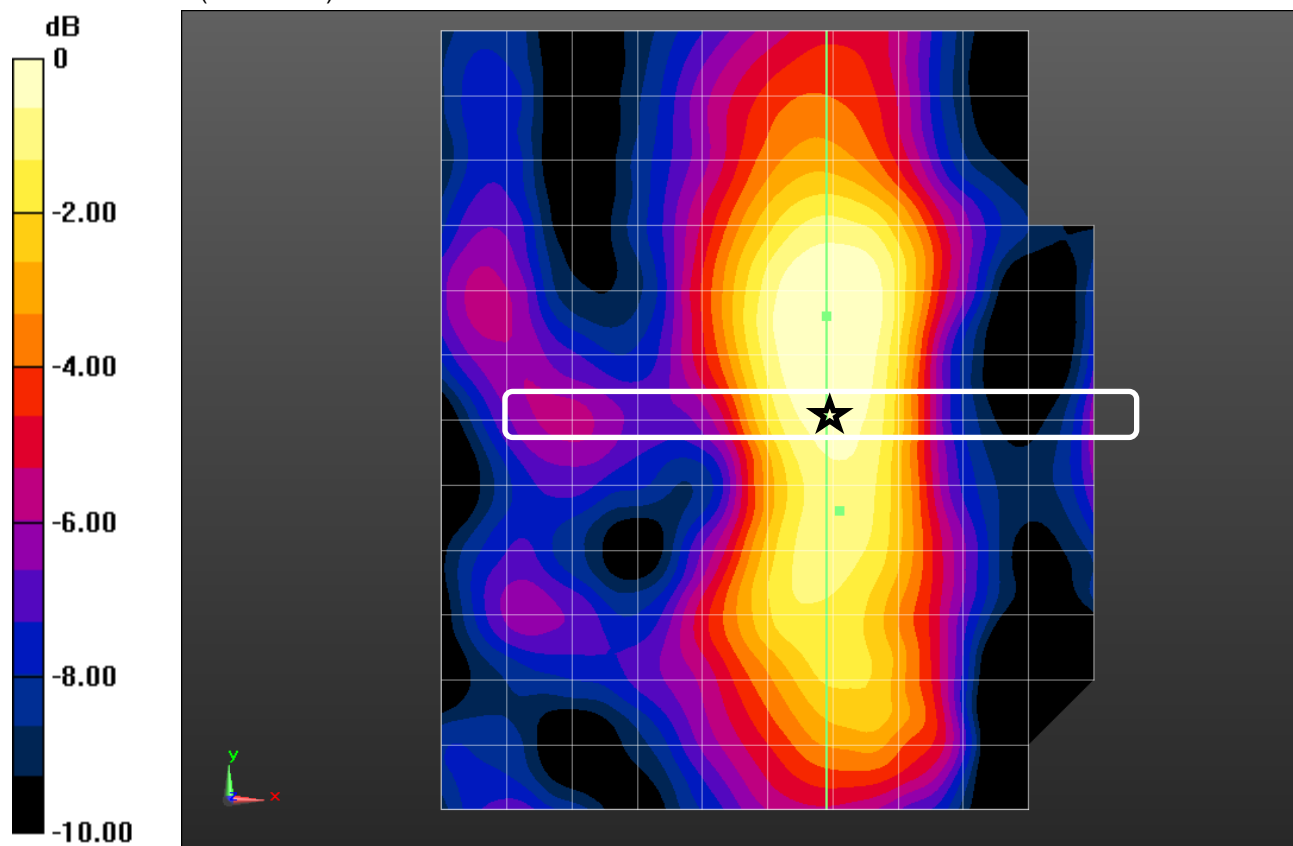
Scan (121x121x1): Interpolated grid: dx=8.000 mm, dy=8.000 mm, dz=20.00 mm

Maximum value of Total (interpolated) = 67.90 V/m

913MHz/start 500mm/TX5 0 Degrees 0mm Offset/500mm_0 degrees/ Pocket 15/Pre Area

Scan (13x13x1): Measurement grid: dx=80mm, dy=80mm, dz=20mm

Maximum value of Total (measured) = 66.75 V/m



0 dB = 66.75 V/m = 36.49 dBV/m

913 CW Z RF-Field Plot

Frequency: 913 MHz; Duty Cycle: 1:1

913MHz/start 500mm/TX5 0 Degrees 0mm Offset/500mm_0 degrees/ Pocket 15/Pre Area Scan (121x121x1):

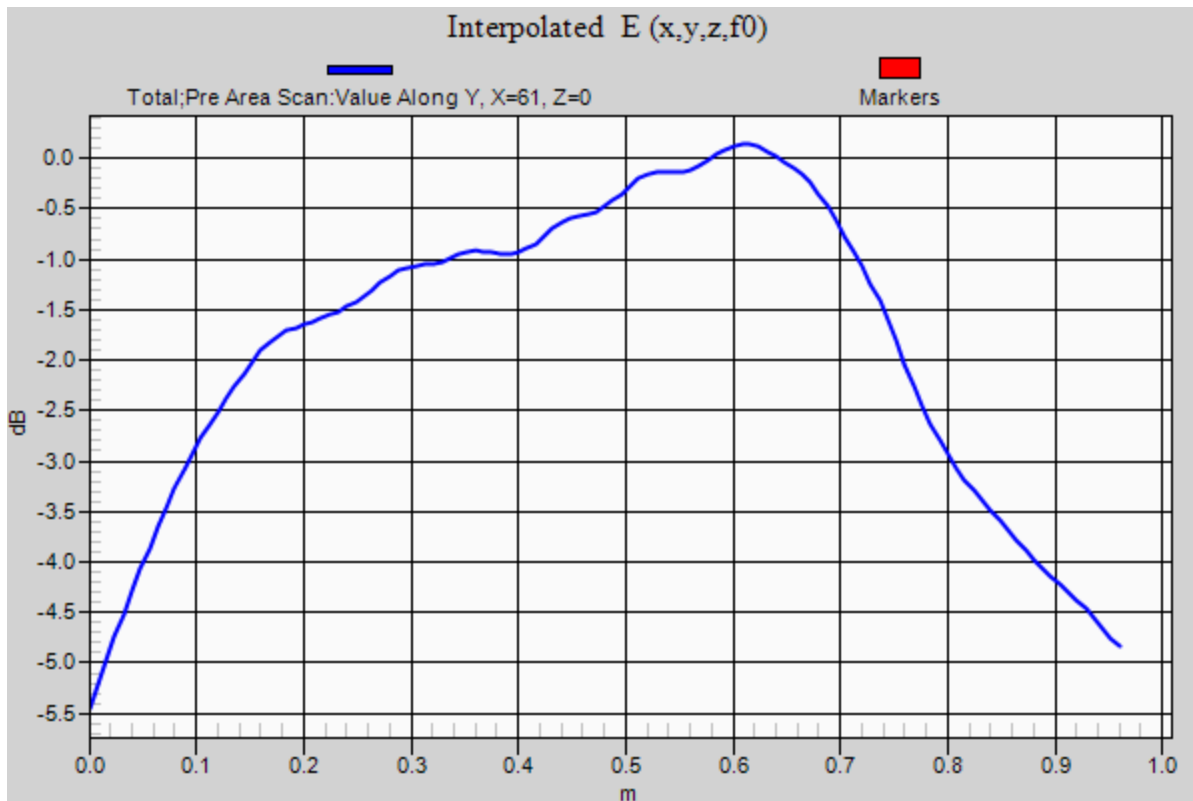
Interpolated grid: dx=8.000 mm, dy=8.000 mm, dz=20.00 mm

Maximum value of Total (interpolated) = 67.90 V/m

913MHz/start 500mm/TX5 0 Degrees 0mm Offset/500mm_0 degrees/ Pocket 15/Pre Area Scan (13x13x1):

Measurement grid: dx=80mm, dy=80mm, dz=20mm

Maximum value of Total (measured) = 66.75 V/m



913 CW Y-Z RF-Field Plot

Frequency: 913 MHz; Duty Cycle: 1:1; Room Ambient Temperature: 24.0°C; Liquid Temperature: 23.0°C
 Medium parameters used: $\sigma = 0$ S/m, $\epsilon_r = 1$; $\rho = 0$ kg/m³

DASY5 Configuration:

- Area Scan Setting: Find Secondary Maximum Within: 2.0 dB and with a peak SAR value greater than 0.0012W/kg
- Electronics: DAE4 Sn1359; Calibrated: 2/10/2017
- Probe: EF3DV3 - SN4041; ConvF(1, 1, 1); Calibrated: 3/14/2017;
- Sensor-Surface: 0mm (Fix Surface)
- Phantom: Z Scans; ;

913MHz/start 433mm/TX5 0 Degrees -160mm Offset/500mm_+30 degrees/ Pocket 17/Pre

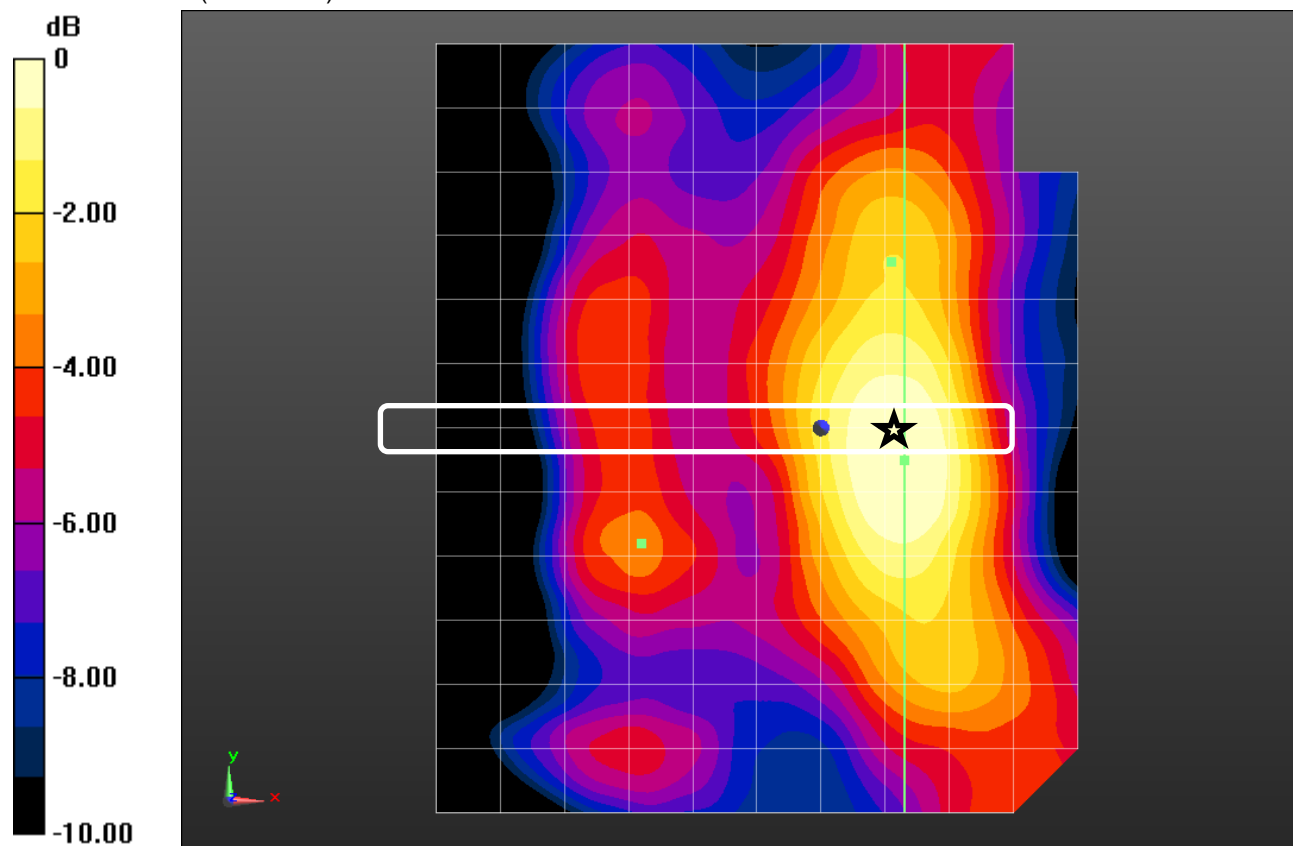
Area Scan (121x121x1): Interpolated grid: dx=8.000 mm, dy=8.000 mm, dz=20.00 mm

Maximum value of Total (interpolated) = 69.90 V/m

913MHz/start 433mm/TX5 0 Degrees -160mm Offset/500mm_+30 degrees/ Pocket 17/Pre

Area Scan (13x13x1): Measurement grid: dx=80mm, dy=80mm, dz=20mm

Maximum value of Total (measured) = 67.57 V/m



0 dB = 67.57 V/m = 36.60 dBV/m

913 CW Z RF-Field Plot

Frequency: 913 MHz; Duty Cycle: 1:1

913MHz/start 433mm/TX5 -160mm Offset/500mm_+30 degrees/ Pocket 17/Pre Area

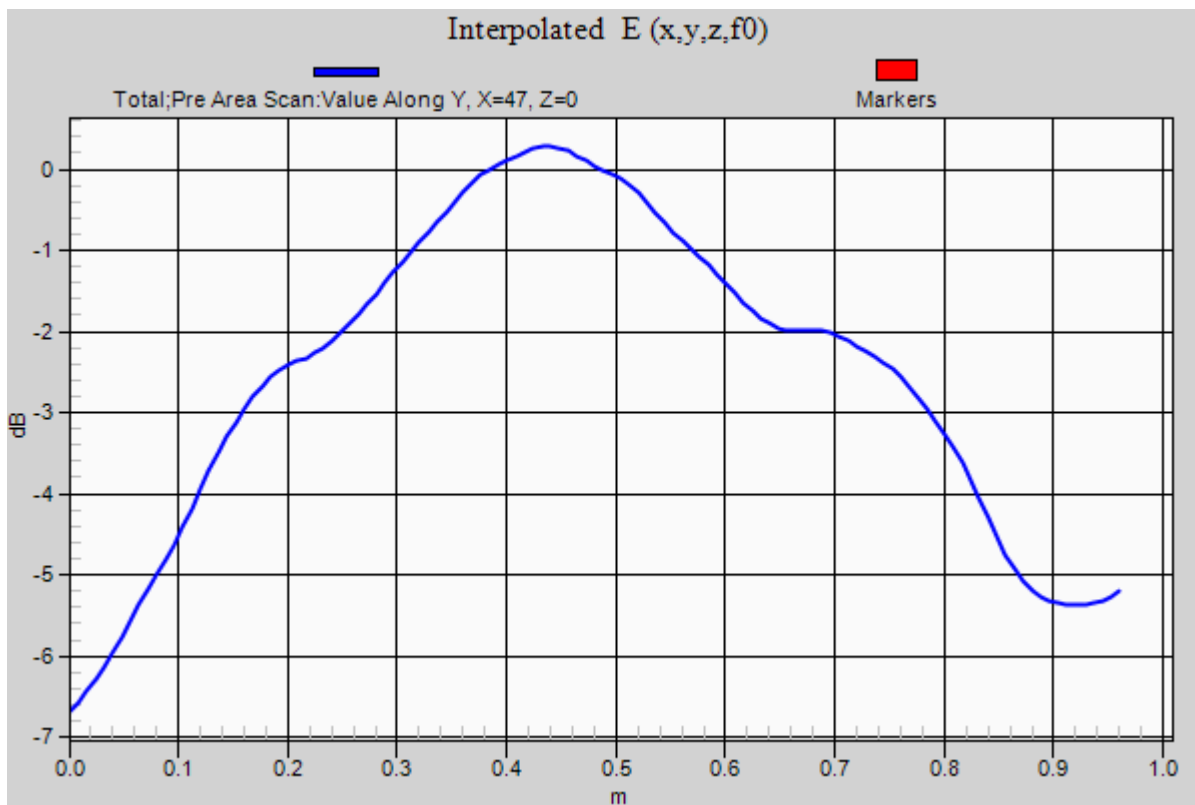
Scan (121x121x1): Interpolated grid: dx=8.000 mm, dy=8.000 mm, dz=20.00 mm

Maximum value of Total (interpolated) = 69.90 V/m

913MHz/start 433mm/TX5 -160mm Offset/500mm_+30 degrees/ Pocket 17/Pre Area

Scan (13x13x1): Measurement grid: dx=80mm, dy=80mm, dz=20mm

Maximum value of Total (measured) = 67.57 V/m



913 CW Y-Z RF-Field Plot

Frequency: 913 MHz; Duty Cycle: 1:1; Room Ambient Temperature: 24.0°C; Liquid Temperature: 23.0°C
Medium parameters used: $\sigma = 0$ S/m, $\epsilon_r = 1$; $\rho = 0$ kg/m³

DASY5 Configuration:

- Area Scan Setting: Find Secondary Maximum Within: 2.0 dB and with a peak SAR value greater than 0.0012W/kg
- Electronics: DAE4 Sn1359; Calibrated: 2/10/2017
- Probe: EF3DV3 - SN4041; ConvF(1, 1, 1); Calibrated: 3/14/2017;
- Sensor-Surface: 0mm (Fix Surface)
- Phantom: Z Scans; ;

913MHz/start 433mm/TX5 0 Degrees 0mm Offset/500mm_-30 degrees/ Pocket 13/Pre

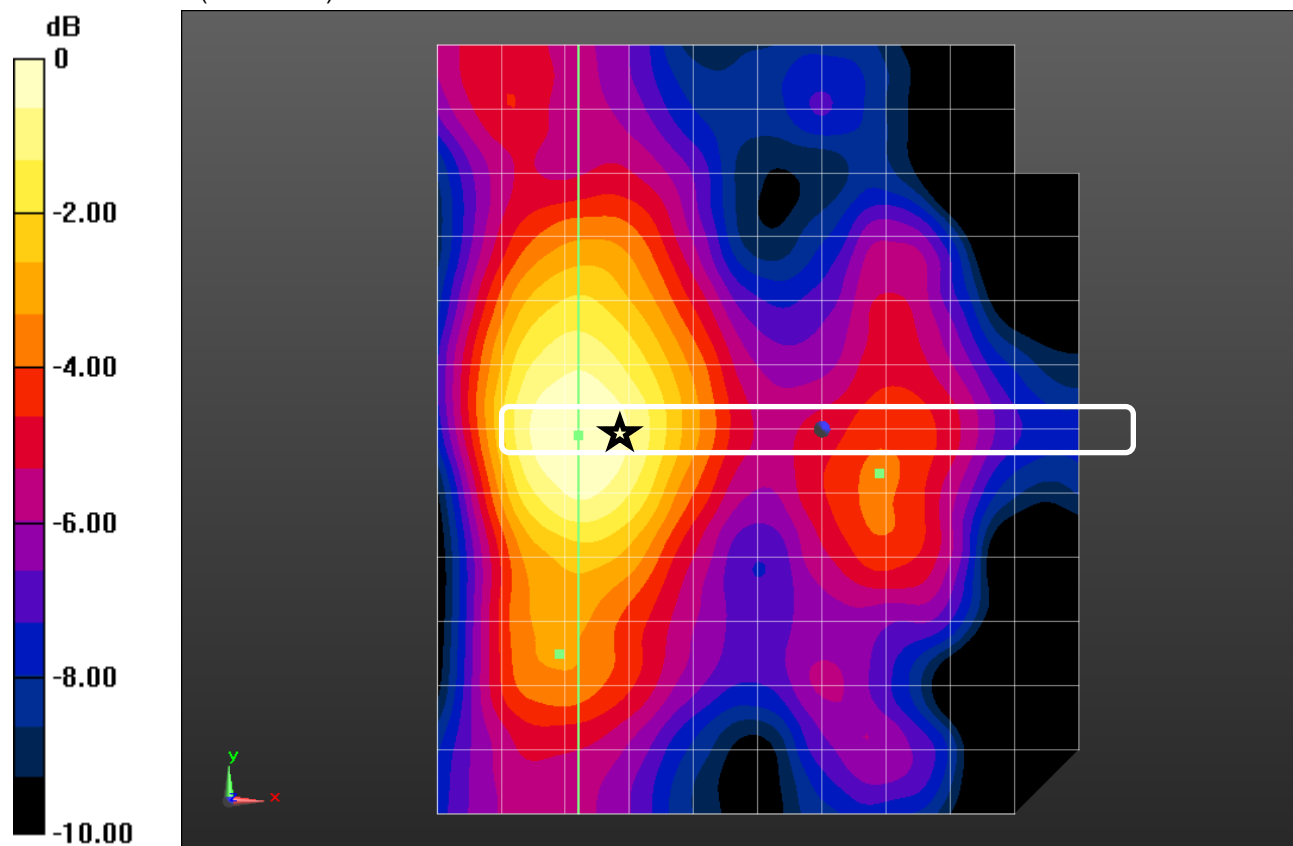
Area Scan (121x121x1): Interpolated grid: dx=8.000 mm, dy=8.000 mm, dz=20.00 mm

Maximum value of Total (interpolated) = 71.76 V/m

913MHz/start 433mm/TX5 0 Degrees 0mm Offset/500mm_-30 degrees/ Pocket 13/Pre

Area Scan (13x13x1): Measurement grid: dx=80mm, dy=80mm, dz=20mm

Maximum value of Total (measured) = 70.87 V/m



0 dB = 70.87 V/m = 37.01 dBV/m

913 CW Z RF-Field Plot

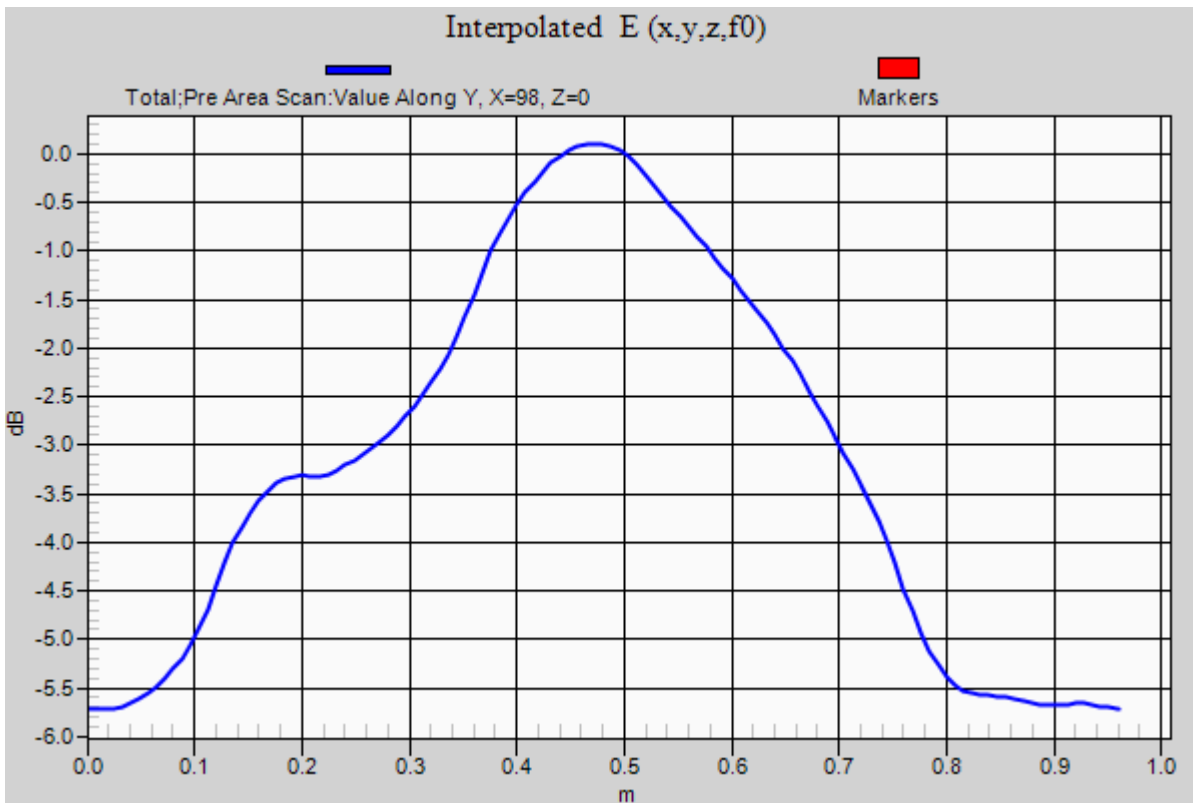
Frequency: 913 MHz; Duty Cycle: 1:1

913MHz/start 433mm/TX5 0 Degrees 0mm Offset/500mm_-30 degrees/ Pocket 13/Pre Area Scan (121x121x1): Interpolated grid: dx=8.000 mm, dy=8.000 mm, dz=20.00 mm

Maximum value of Total (interpolated) = 71.76 V/m

913MHz/start 433mm/TX5 0 Degrees 0mm Offset/500mm_-30 degrees/ Pocket 13/Pre Area Scan (13x13x1): Measurement grid: dx=80mm, dy=80mm, dz=20mm

Maximum value of Total (measured) = 70.87 V/m



913 CW Y-Z RF-Field Plot

Frequency: 913 MHz; Duty Cycle: 1:1; Room Ambient Temperature: 24.0°C; Liquid Temperature: 23.0°C
Medium parameters used: $\sigma = 0$ S/m, $\epsilon_r = 1$; $\rho = 0$ kg/m³

DASY5 Configuration:

- Area Scan Setting: Find Secondary Maximum Within: 2.0 dB and with a peak SAR value greater than 0.0012W/kg
- Electronics: DAE4 Sn1359; Calibrated: 2/10/2017
- Probe: EF3DV3 - SN4041; ConvF(1, 1, 1); Calibrated: 3/14/2017;
- Sensor-Surface: 0mm (Fix Surface)
- Phantom: Z Scans; ;

913MHz/start 483mm/TX5 0 Degrees 0mm Offset/500mm_+15 degrees/ Pocket 16/Pre

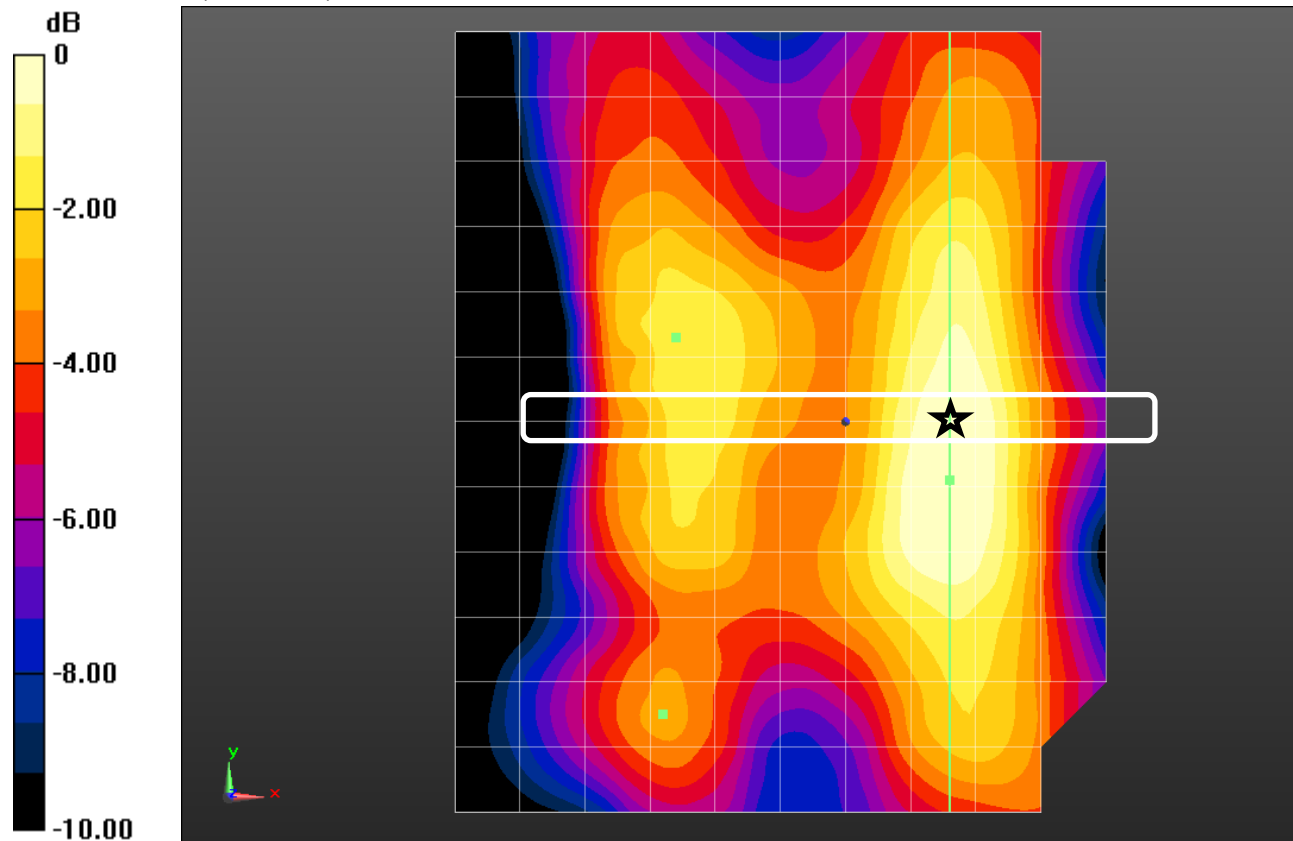
Area Scan (121x121x1): Interpolated grid: dx=8.000 mm, dy=8.000 mm, dz=20.00 mm

Maximum value of Total (interpolated) = 65.14 V/m

913MHz/start 483mm/TX5 0 Degrees 0mm Offset/500mm_+15 degrees/ Pocket 16/Pre

Area Scan (13x13x1): Measurement grid: dx=80mm, dy=80mm, dz=20mm

Maximum value of Total (measured) = 62.48 V/m



0 dB = 62.48 V/m = 35.91 dBV/m

913 CW Z RF-Field Plot

Frequency: 913 MHz; Duty Cycle: 1:1

913MHz/start 483mm/TX5 0 Degrees 0mm Offset/500mm_+15 degrees/ Pocket 16/Pre

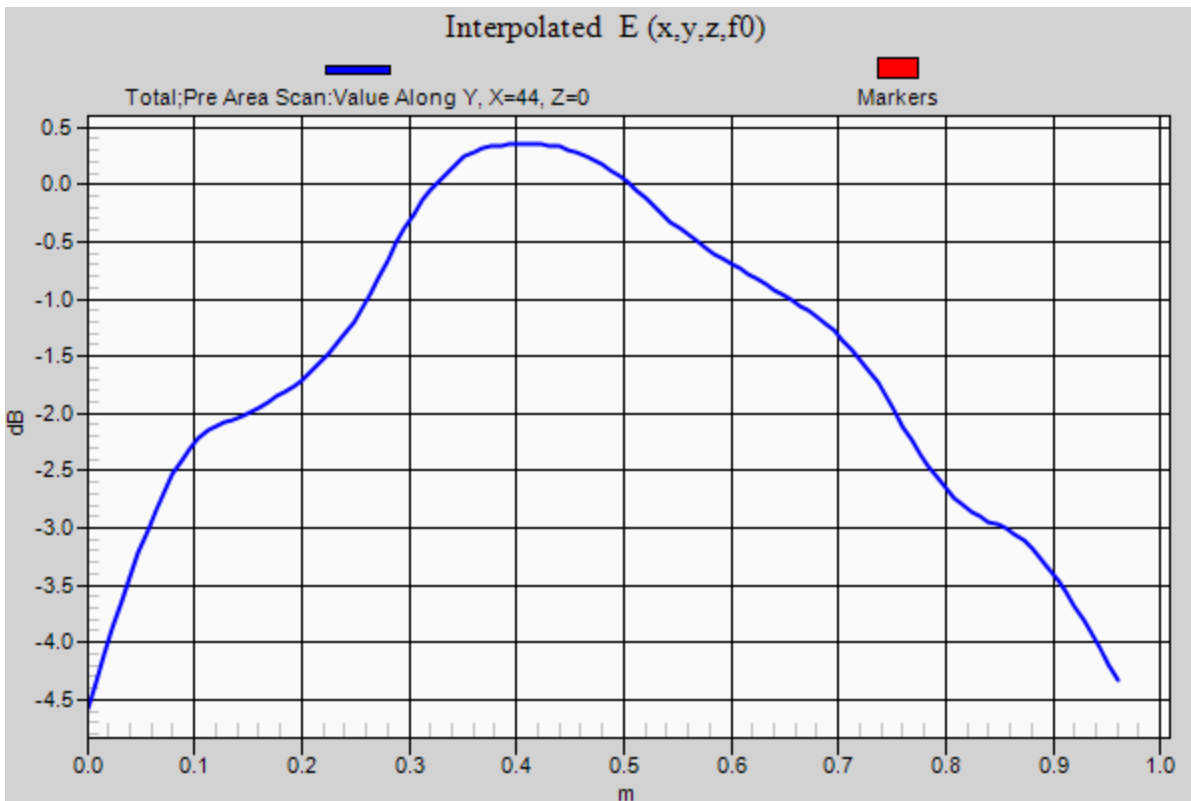
Area Scan (121x121x1): Interpolated grid: dx=8.000 mm, dy=8.000 mm, dz=20.00 mm

Maximum value of Total (interpolated) = 65.14 V/m

913MHz/start 483mm/TX5 0 Degrees 0mm Offset/500mm_+15 degrees/ Pocket 16/Pre

Area Scan (13x13x1): Measurement grid: dx=80mm, dy=80mm, dz=20mm

Maximum value of Total (measured) = 62.48 V/m



913 CW Y-Z RF-Field Plot

Frequency: 913 MHz; Duty Cycle: 1:1; Room Ambient Temperature: 24.0°C; Liquid Temperature: 23.0°C
 Medium parameters used: $\sigma = 0$ S/m, $\epsilon_r = 1$; $\rho = 0$ kg/m³

DASY5 Configuration:

- Area Scan Setting: Find Secondary Maximum Within: 2.0 dB and with a peak SAR value greater than 0.0012W/kg
- Electronics: DAE4 Sn1359; Calibrated: 2/10/2017
- Probe: EF3DV3 - SN4041; ConvF(1, 1, 1); Calibrated: 3/14/2017;
- Sensor-Surface: 0mm (Fix Surface)
- Phantom: Z Scans; ;

913MHz/start 483mm/TX5 0 Degrees 0mm Offset/500mm_-15 degrees/ Pocket 14/Pre

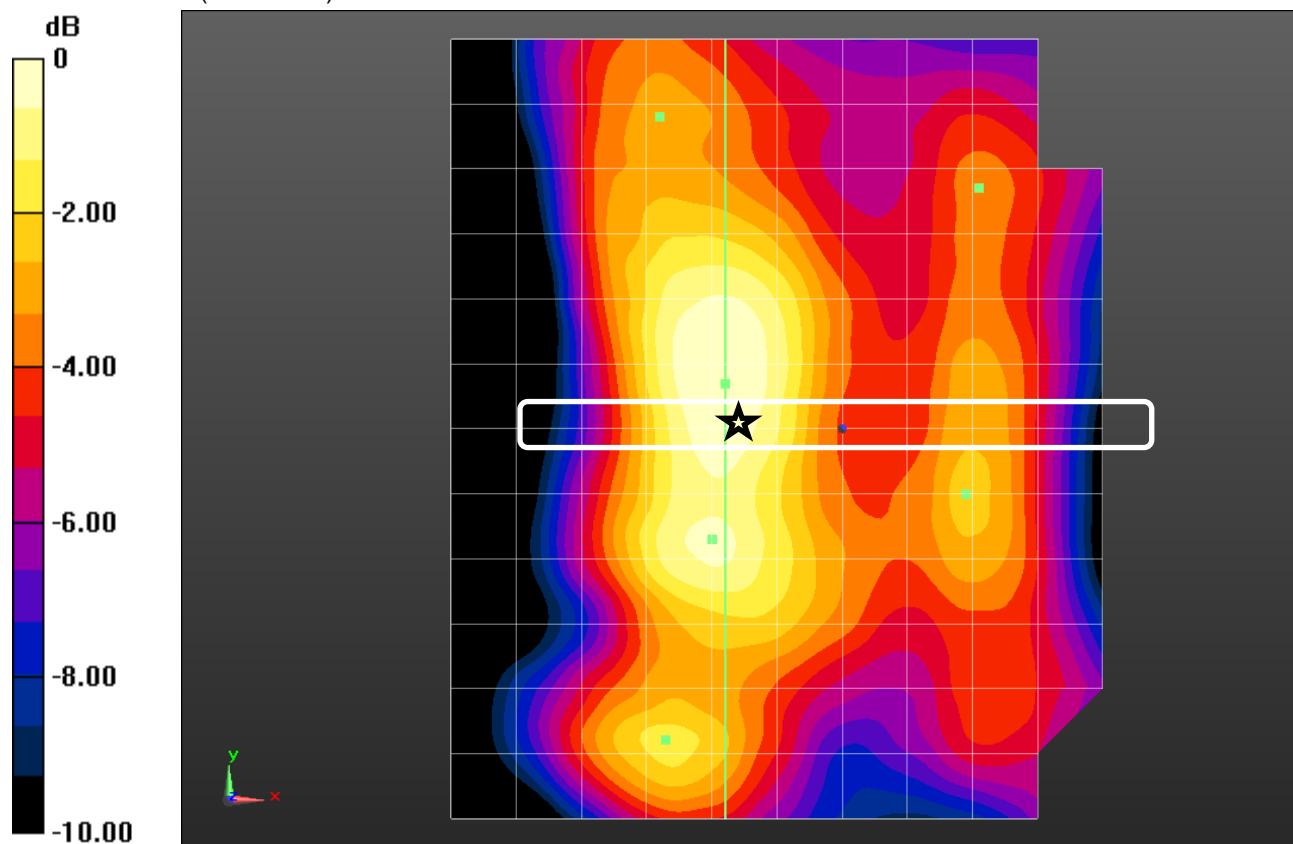
Area Scan (121x121x1): Interpolated grid: dx=8.000 mm, dy=8.000 mm, dz=20.00 mm

Maximum value of Total (interpolated) = 64.08 V/m

913MHz/start 483mm/TX5 0 Degrees 0mm Offset/500mm_-15 degrees/ Pocket 14/Pre

Area Scan (13x13x1): Measurement grid: dx=80mm, dy=80mm, dz=20mm

Maximum value of Total (measured) = 63.45 V/m



0 dB = 63.45 V/m = 36.05 dBV/m

913 CW Z RF-Field Plot

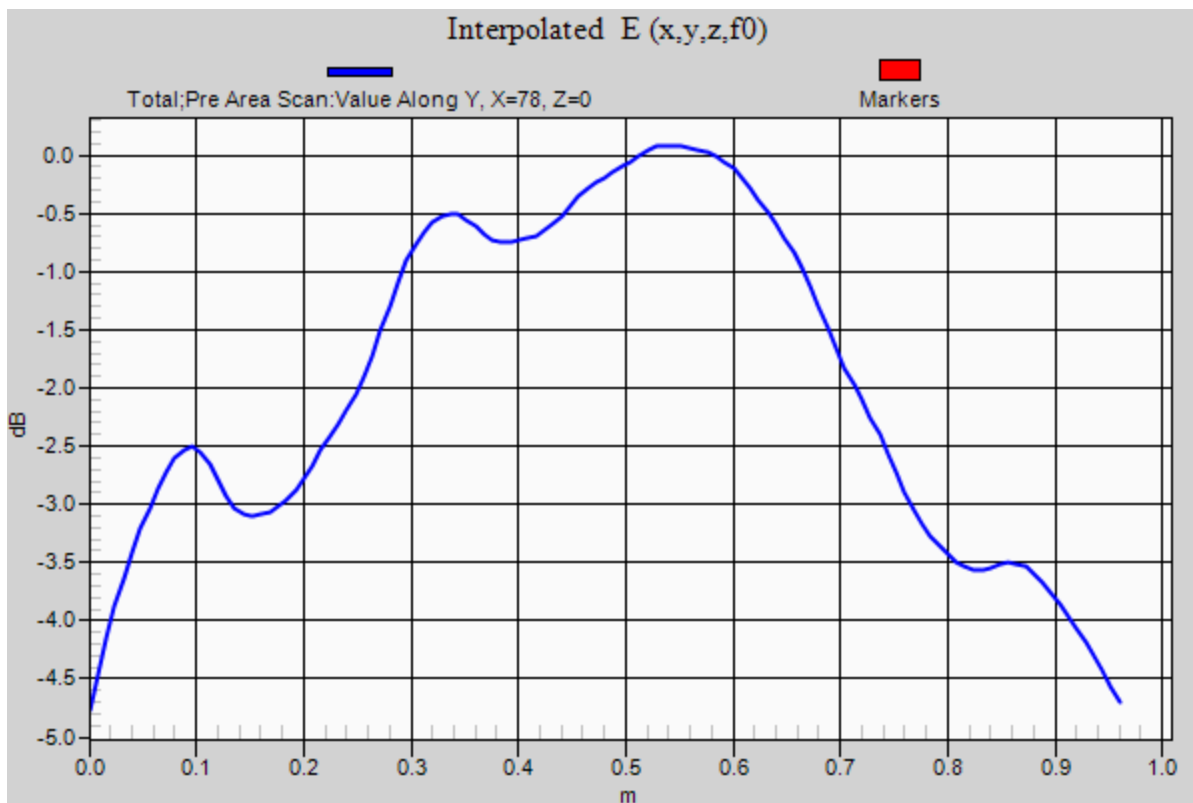
Frequency: 913 MHz; Duty Cycle: 1:1

913MHz/start 483mm/TX5 0 Degrees 0mm Offset/500mm_-15 degrees/ Pocket 14/Pre Area Scan (121x121x1): Interpolated grid: dx=8.000 mm, dy=8.000 mm, dz=20.00 mm

Maximum value of Total (interpolated) = 64.08 V/m

913MHz/start 483mm/TX5 0 Degrees 0mm Offset/500mm_-15 degrees/ Pocket 14/Pre Area Scan (13x13x1): Measurement grid: dx=80mm, dy=80mm, dz=20mm

Maximum value of Total (measured) = 63.45 V/m



913 CW Y-Z RF-Field Plot

Frequency: 913 MHz; Duty Cycle: 1:1; Room Ambient Temperature: 24.0°C; Liquid Temperature: 23.0°C
 Medium parameters used: $\sigma = 0$ S/m, $\epsilon_r = 1$; $\rho = 0$ kg/m³

DASY5 Configuration:

- Area Scan Setting: Find Secondary Maximum Within: 2.0 dB and with a peak SAR value greater than 0.0012W/kg
- Electronics: DAE4 Sn1359; Calibrated: 2/10/2017
- Probe: EF3DV3 - SN4041; ConvF(1, 1, 1); Calibrated: 3/14/2017;
- Sensor-Surface: 0mm (Fix Surface)
- Phantom: Z Scans; ;

913MHz/Start 600mm/TX 5 0 Degrees 0mm Offset/600mm_0 degrees/ Pocket 6/Pre Area

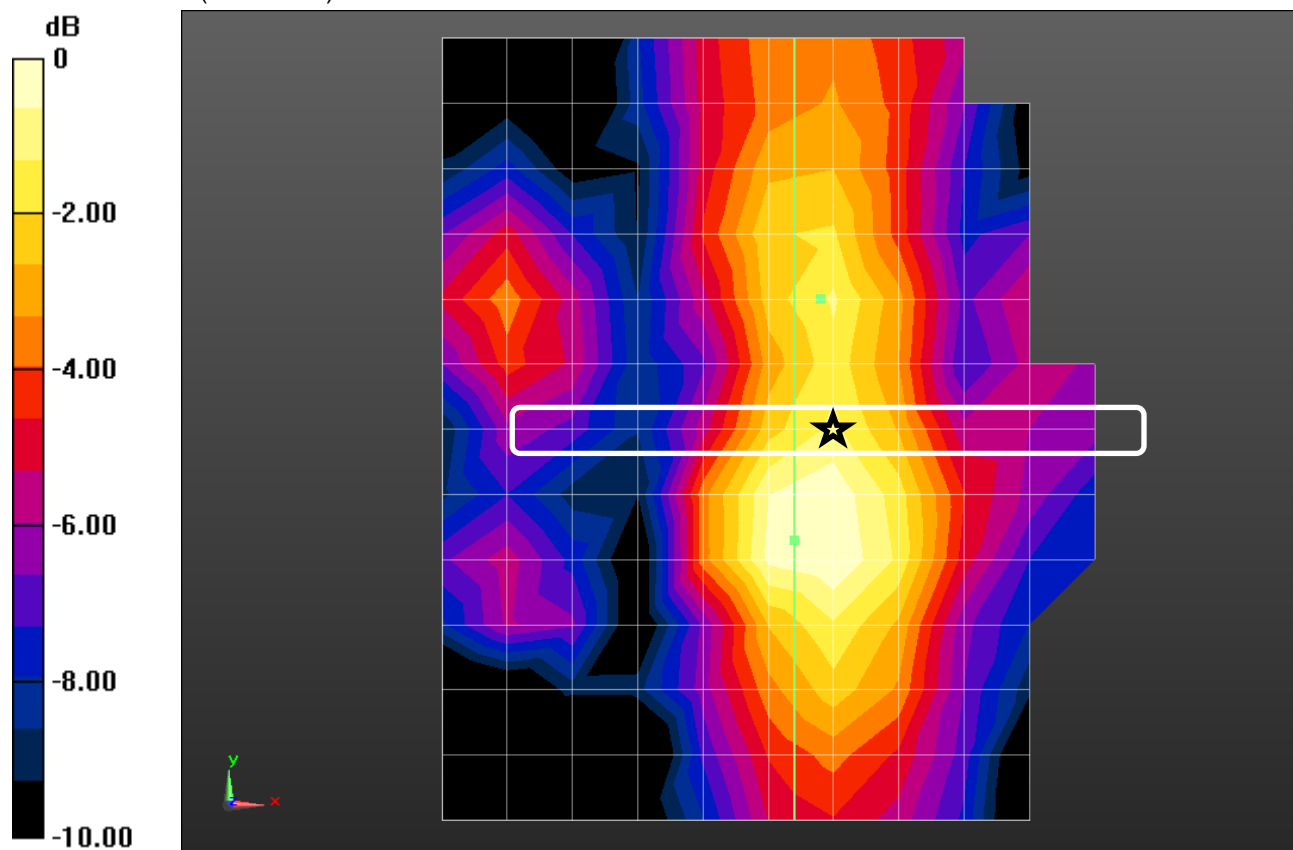
Scan (121x121x1): Interpolated grid: dx=8.000 mm, dy=8.000 mm, dz=20.00 mm

Maximum value of Total (interpolated) = 58.04 V/m

913MHz/Start 600mm/TX 5 0 Degrees 0mm Offset/600mm_0 degrees/ Pocket 6/Pre Area

Scan (13x13x1): Measurement grid: dx=80mm, dy=80mm, dz=20mm

Maximum value of Total (measured) = 56.00 V/m



0 dB = 56.00 V/m = 34.96 dBV/m

913 CW Z RF-Field Plot

Frequency: 913 MHz; Duty Cycle: 1:1

913MHz/Start 600mm/TX5 0 Degrees 0mm Offset/600mm_0 degrees/ Pocket 6/Pre Area

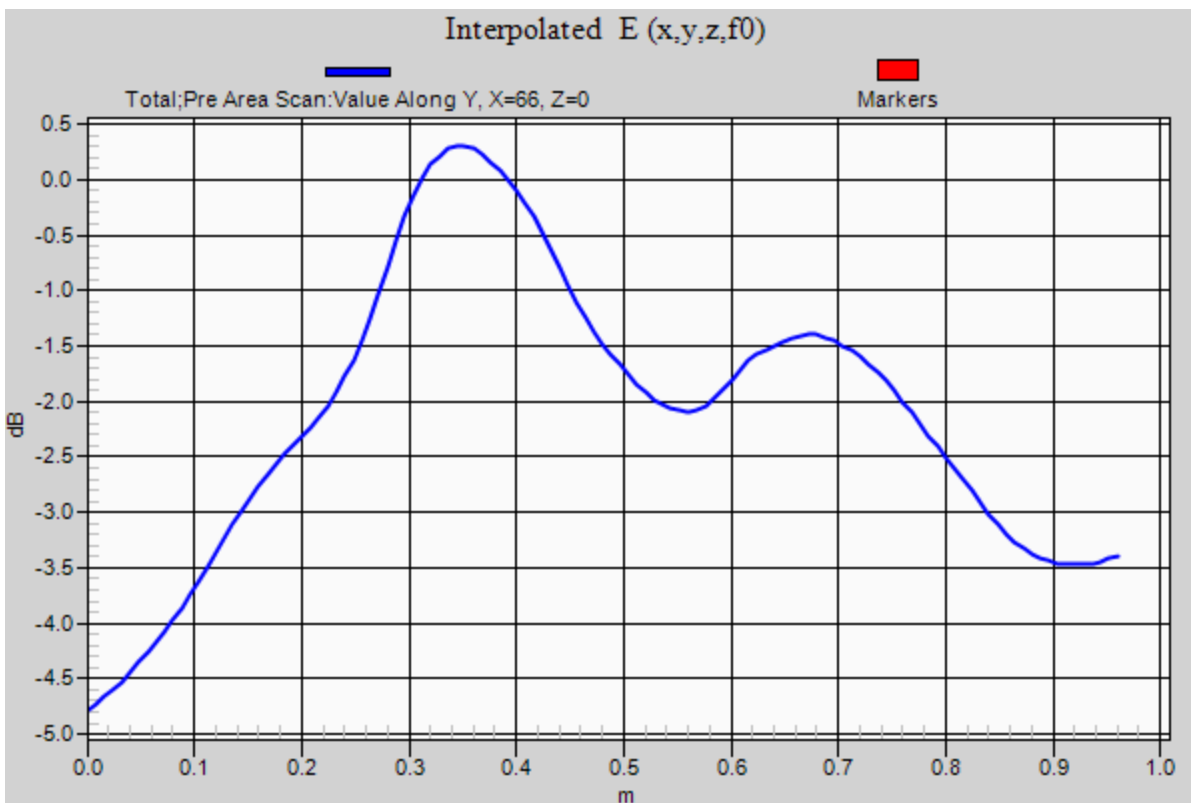
Scan (121x121x1): Interpolated grid: dx=8.000 mm, dy=8.000 mm, dz=20.00 mm

Maximum value of Total (interpolated) = 58.04 V/m

913MHz/Start 600mm/TX5 0 Degrees 0mm Offset/600mm_0 degrees/ Pocket 6/Pre Area

Scan (13x13x1): Measurement grid: dx=80mm, dy=80mm, dz=20mm

Maximum value of Total (measured) = 56.00 V/m



913 CW Y-Z RF-Field Plot

Frequency: 913 MHz; Duty Cycle: 1:1; Room Ambient Temperature: 24.0°C; Liquid Temperature: 23.0°C
 Medium parameters used: $\sigma = 0$ S/m, $\epsilon_r = 1$; $\rho = 0$ kg/m³

DASY5 Configuration:

- Area Scan Setting: Find Secondary Maximum Within: 2.0 dB and with a peak SAR value greater than 0.0012W/kg
- Electronics: DAE4 Sn1359; Calibrated: 2/10/2017
- Probe: EF3DV3 - SN4041; ConvF(1, 1, 1); Calibrated: 3/14/2017;
- Sensor-Surface: 0mm (Fix Surface)
- Phantom: Z Scans; ;

913MHz/Start 544mm/TX 5 180 Degrees 0mm Offset/600mm_+25 degrees/ Pocket 7/Pre

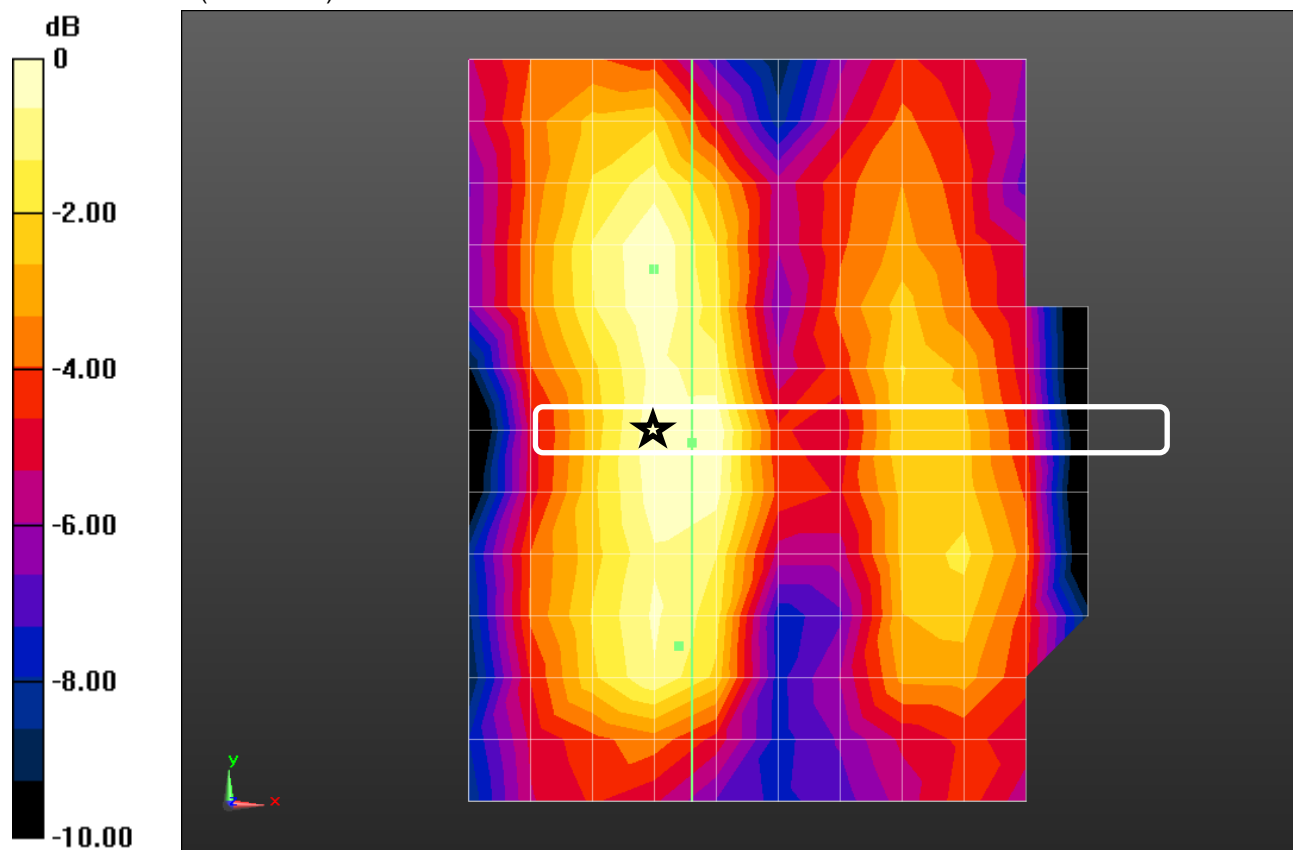
Area Scan (121x121x1): Interpolated grid: dx=8.000 mm, dy=8.000 mm, dz=20.00 mm

Maximum value of Total (interpolated) = 58.37 V/m

913MHz/Start 544mm/TX 5 180 Degrees 0mm Offset/600mm_+25 degrees/ Pocket 7/Pre

Area Scan (13x13x1): Measurement grid: dx=80mm, dy=80mm, dz=20mm

Maximum value of Total (measured) = 54.60 V/m



0 dB = 54.60 V/m = 34.74 dBV/m

913 CW Z RF-Field Plot

Frequency: 913 MHz; Duty Cycle: 1:1

913MHz/Start 544mm/TX 5 180 Degrees 0mm Offset/600mm_+25 degrees/ Pocket 7/Pre Area Scan (121x121x1):

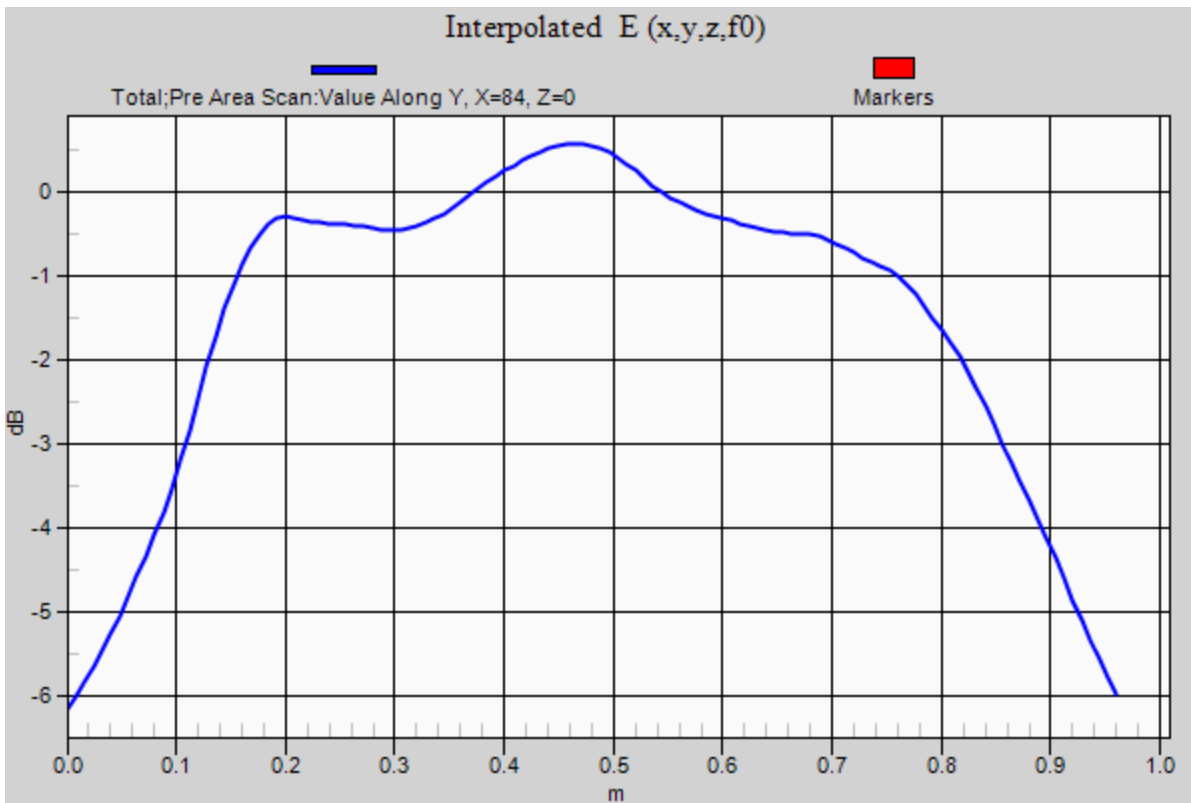
Interpolated grid: dx=8.000 mm, dy=8.000 mm, dz=20.00 mm

Maximum value of Total (interpolated) = 58.37 V/m

913MHz/Start 544mm/TX 5 180 Degrees 0mm Offset/600mm_+25 degrees/ Pocket 7/Pre Area Scan (13x13x1):

Measurement grid: dx=80mm, dy=80mm, dz=20mm

Maximum value of Total (measured) = 54.60 V/m



913 CW Y-Z RF-Field Plot

Frequency: 913 MHz; Duty Cycle: 1:1; Room Ambient Temperature: 24.0°C; Liquid Temperature: 23.0°C
 Medium parameters used: $\sigma = 0$ S/m, $\epsilon_r = 1$; $\rho = 0$ kg/m³

DASY5 Configuration:

- Area Scan Setting: Find Secondary Maximum Within: 2.0 dB and with a peak SAR value greater than 0.0012W/kg
- Electronics: DAE4 Sn1359; Calibrated: 2/10/2017
- Probe: EF3DV3 - SN4041; ConvF(1, 1, 1); Calibrated: 3/14/2017;
- Sensor-Surface: 0mm (Fix Surface)
- Phantom: Z Scans; ;

913MHz/Start 544mm/TX 5 0 Degrees 0mm Offset/600mm_-25 degrees/ Pocket 5/Pre

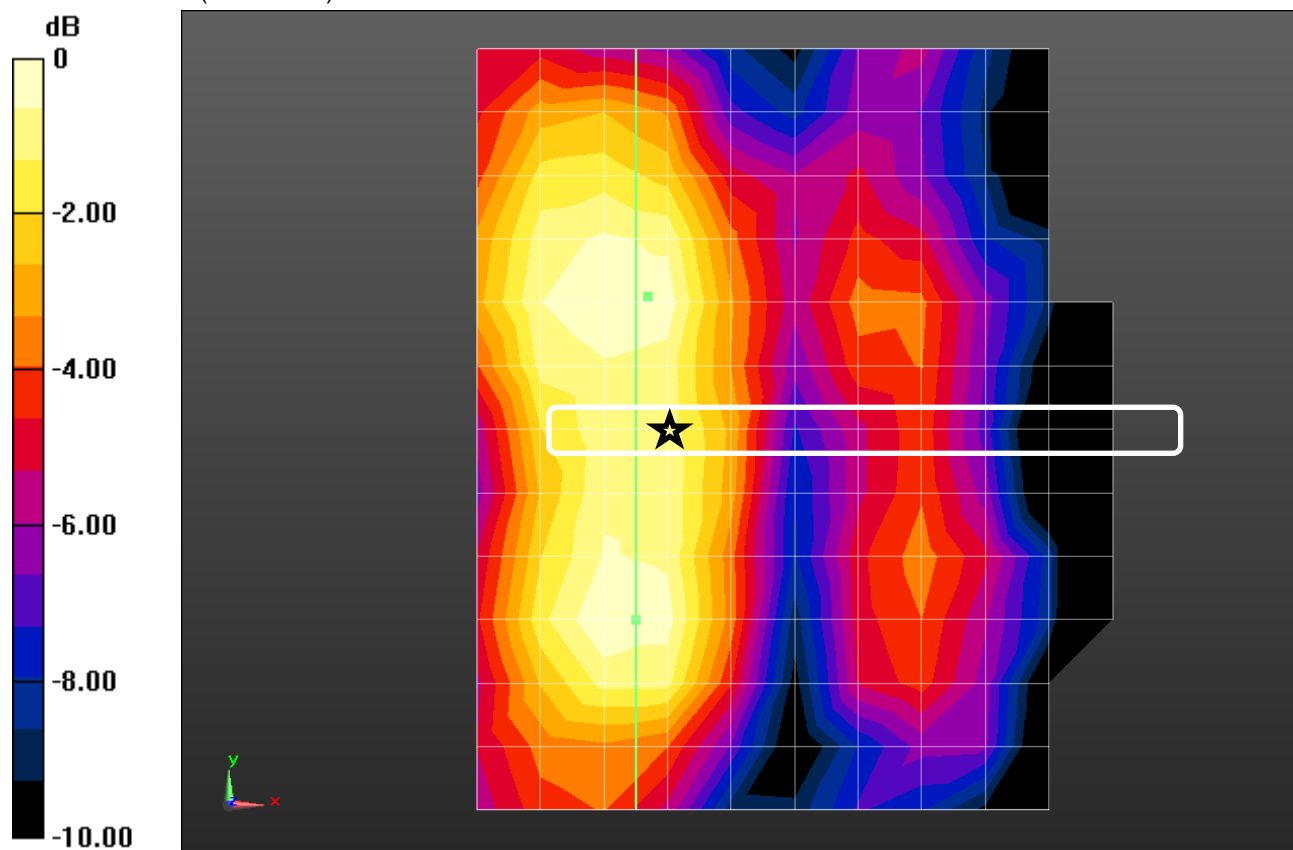
Area Scan (121x121x1): Interpolated grid: dx=8.000 mm, dy=8.000 mm, dz=20.00 mm

Maximum value of Total (interpolated) = 59.11 V/m

913MHz/Start 544mm/TX 5 0 Degrees 0mm Offset/600mm_-25 degrees/ Pocket 5/Pre

Area Scan (13x13x1): Measurement grid: dx=80mm, dy=80mm, dz=20mm

Maximum value of Total (measured) = 57.78 V/m



0 dB = 57.78 V/m = 35.24 dBV/m

913 CW Z RF-Field Plot

Frequency: 913 MHz; Duty Cycle: 1:1

913MHz/Start 544mm/TX5 0 Degrees 0mm Offset/600mm_-25 degrees/ Pocket 5/Pre Area Scan (121x121x1):

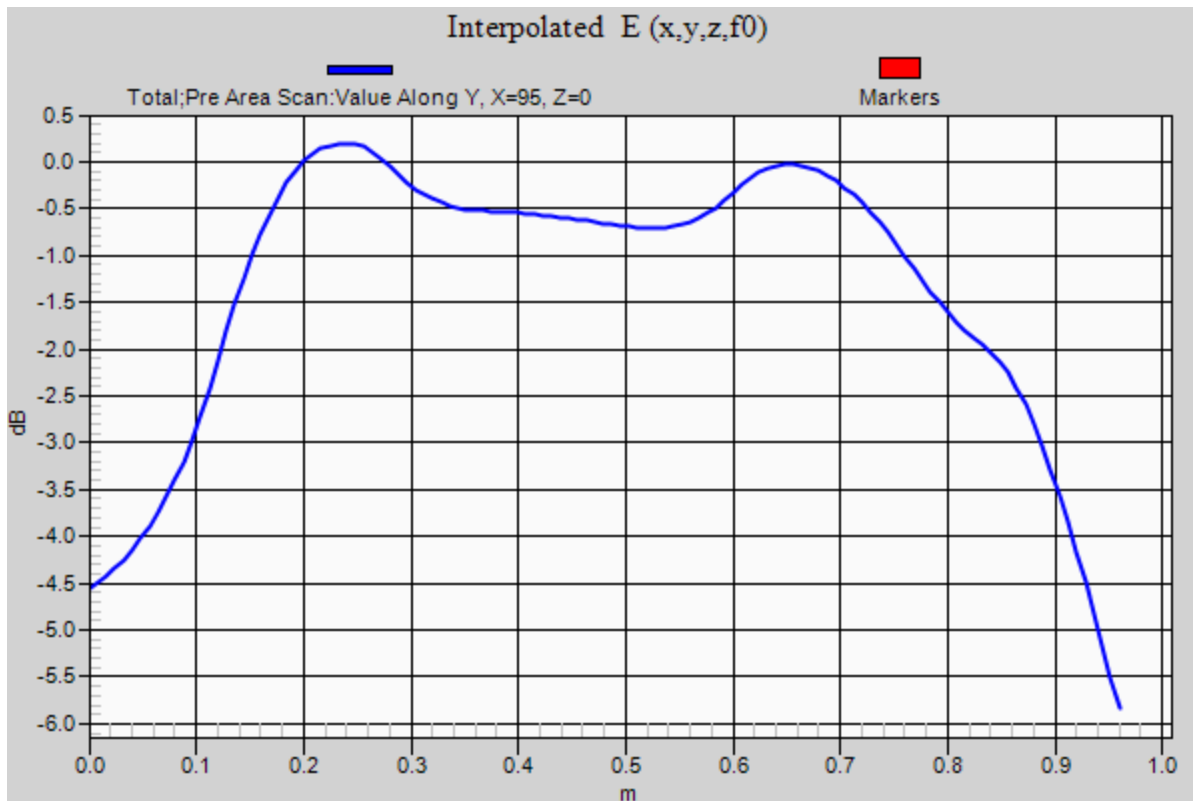
Interpolated grid: dx=8.000 mm, dy=8.000 mm, dz=20.00 mm

Maximum value of Total (interpolated) = 59.11 V/m

913MHz/Start 544mm/TX5 0 Degrees 0mm Offset/600mm_-25 degrees/ Pocket 5/Pre Area Scan (13x13x1):

Measurement grid: dx=80mm, dy=80mm, dz=20mm

Maximum value of Total (measured) = 57.78 V/m



913 CW Y-Z RF-Field Plot

Frequency: 913 MHz; Duty Cycle: 1:1; Room Ambient Temperature: 24.0°C; Liquid Temperature: 23.0°C

Medium parameters used: $\sigma = 0 \text{ S/m}$, $\epsilon_r = 1$; $\rho = 0 \text{ kg/m}^3$

DASY5 Configuration:

- Area Scan Setting: Find Secondary Maximum Within: 2.0 dB and with a peak SAR value greater than 0.0012W/kg
- Electronics: DAE4 Sn1359; Calibrated: 2/10/2017
- Probe: EF3DV3 - SN4041; ConvF(1, 1, 1); Calibrated: 3/14/2017;
- Sensor-Surface: 0mm (Fix Surface)
- Phantom: Z Scans; ;

913MHz/Start 850mm/TX 5 0 Degrees 0mm Offset/850mm_0 degrees/ Pocket 9/Pre Area Scan (121x121x1):

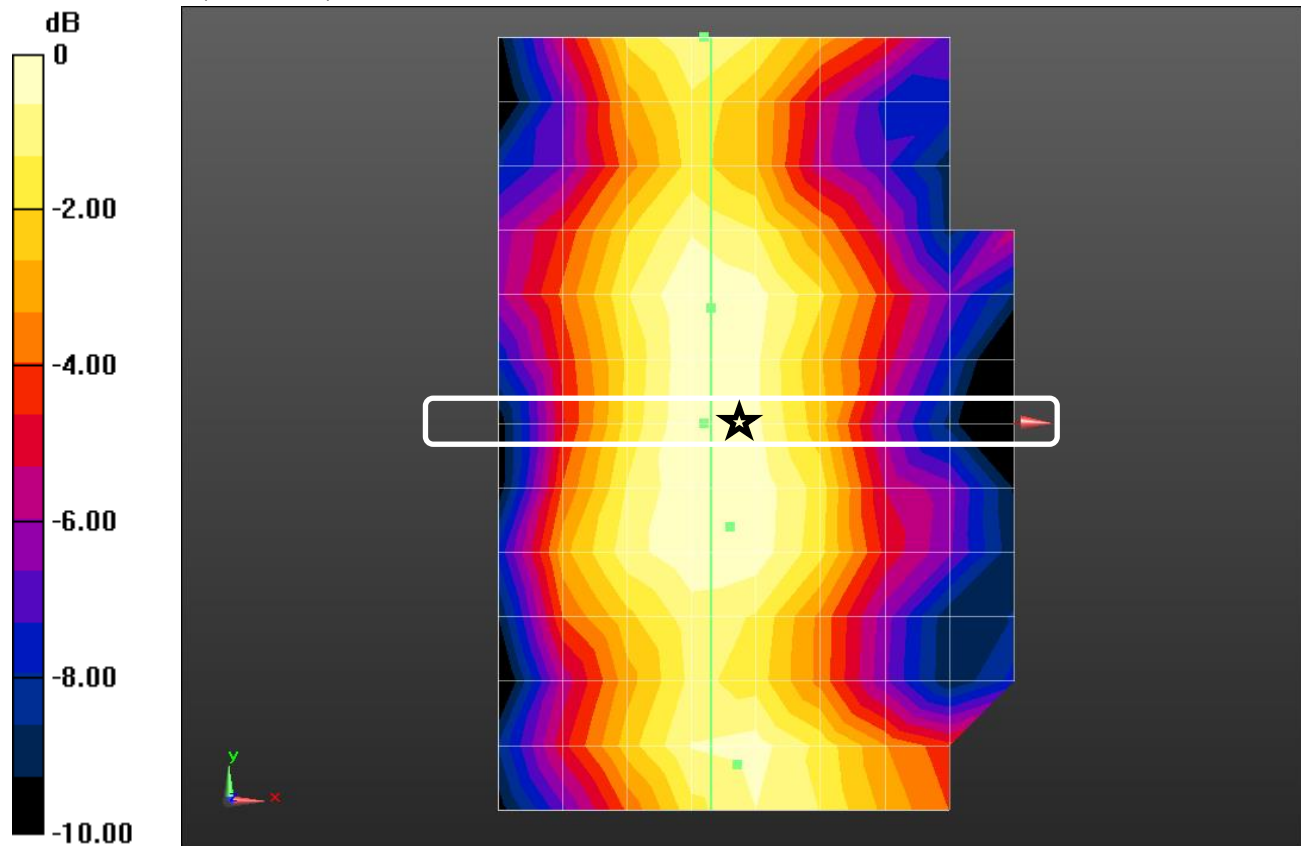
Interpolated grid: dx=8.000 mm, dy=8.000 mm, dz=20.00 mm

Maximum value of Total (interpolated) = 38.47 V/m

913MHz/Start 850mm/TX 5 0 Degrees 0mm Offset/850mm_0 degrees/ Pocket 9/Pre Area Scan (13x13x1):

Measurement grid: dx=80mm, dy=80mm, dz=20mm

Maximum value of Total (measured) = 37.99 V/m



0 dB = 37.99 V/m = 31.59 dBV/m

913 CW Z RF-Field Plot

Frequency: 913 MHz; Duty Cycle: 1:1

913MHz/Start 850mm/TX 5 0mm Offset/850mm_0 degrees/ Pocket 9/Pre Area Scan

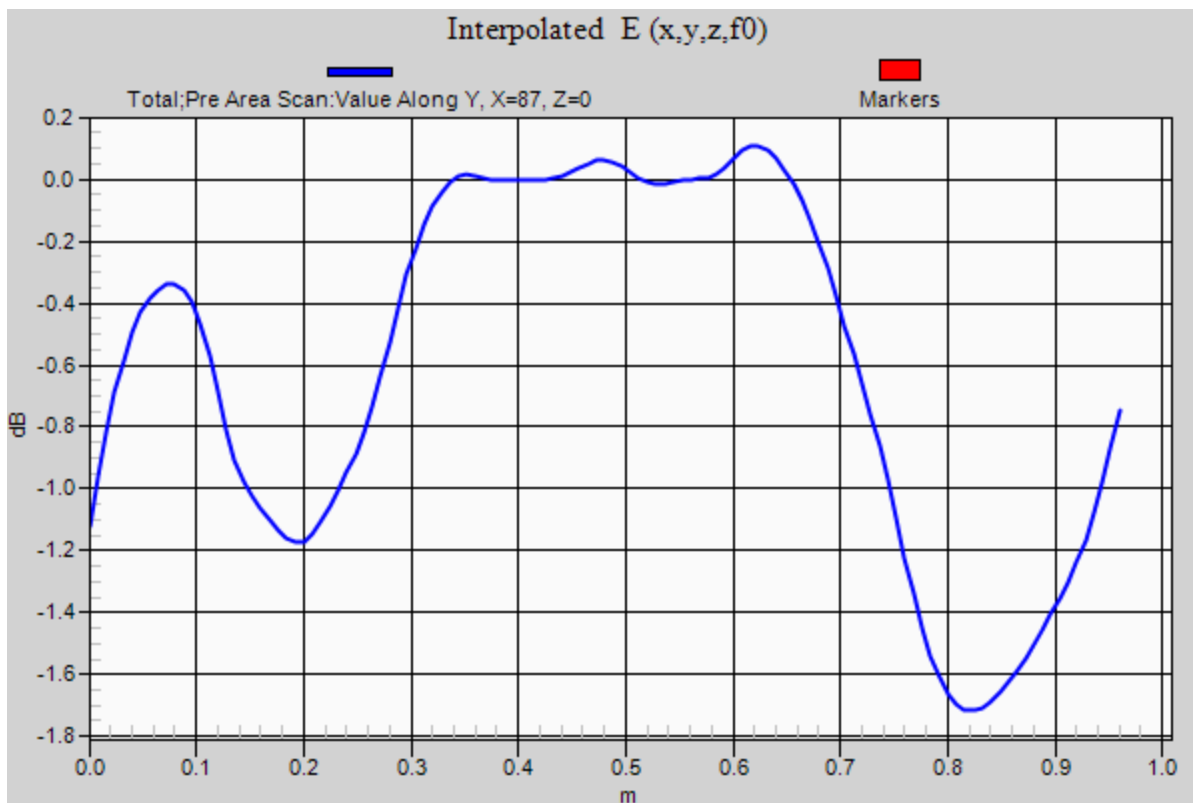
(121x121x1): Interpolated grid: dx=8.000 mm, dy=8.000 mm, dz=20.00 mm

Maximum value of Total (interpolated) = 38.47 V/m

913MHz/Start 850mm/TX 5 0mm Offset/850mm_0 degrees/ Pocket 9/Pre Area Scan

(13x13x1): Measurement grid: dx=80mm, dy=80mm, dz=20mm

Maximum value of Total (measured) = 37.99 V/m



913 CW Y-Z RF-Field Plot

Frequency: 913 MHz; Duty Cycle: 1:1; Room Ambient Temperature: 24.0°C; Liquid Temperature: 23.0°C
Medium parameters used: $\sigma = 0$ S/m, $\epsilon_r = 1$; $\rho = 0$ kg/m³

DASY5 Configuration:

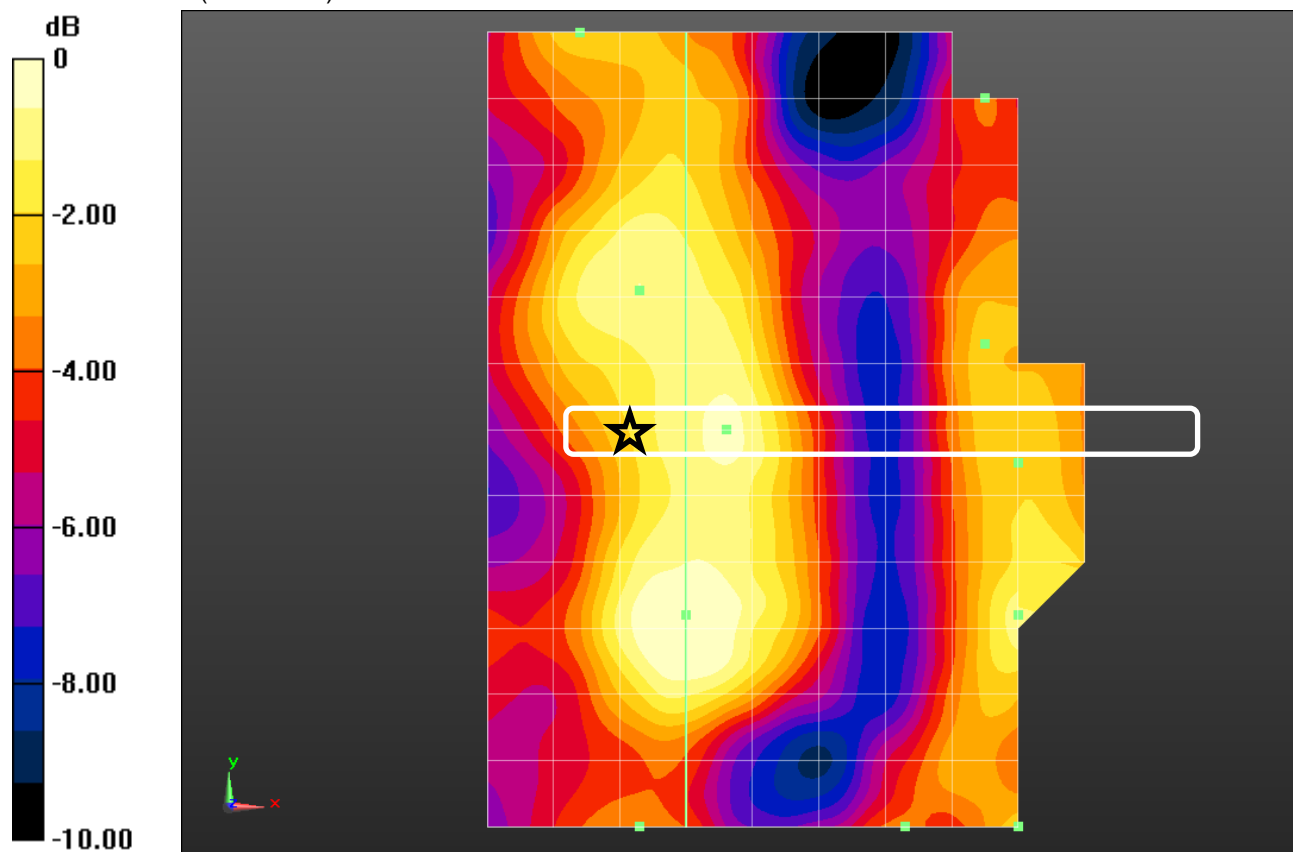
- Area Scan Setting: Find Secondary Maximum Within: 2.0 dB and with a peak SAR value greater than 0.0012W/kg
- Electronics: DAE4 Sn1359; Calibrated: 2/10/2017
- Probe: EF3DV3 - SN4041; ConvF(1, 1, 1); Calibrated: 3/14/2017;
- Sensor-Surface: 0mm (Fix Surface)
- Phantom: Z Scans; ;

913MHz/start 770mm/TX5 180 Degrees 0mm/850mm_+25 degrees/Restore Pocket

10/Pre Area Scan (121x121x1): Interpolated grid: dx=8.000 mm, dy=8.000 mm, dz=20.00 mm
Maximum value of Total (interpolated) = 41.96 V/m

913MHz/start 770mm/TX5 180 Degrees 0mm/850mm_+25 degrees/Restore Pocket

10/Pre Area Scan (13x13x1): Measurement grid: dx=80mm, dy=80mm, dz=20mm
Maximum value of Total (measured) = 41.55 V/m



0 dB = 41.55 V/m = 32.37 dBV/m

913 913 CW Z RF-Field Plot

Frequency: 913 MHz; Duty Cycle: 1:1

913MHz/start 770mm/TX5 180 Degrees 0mm/850mm_+25 degrees/Restore Pocket

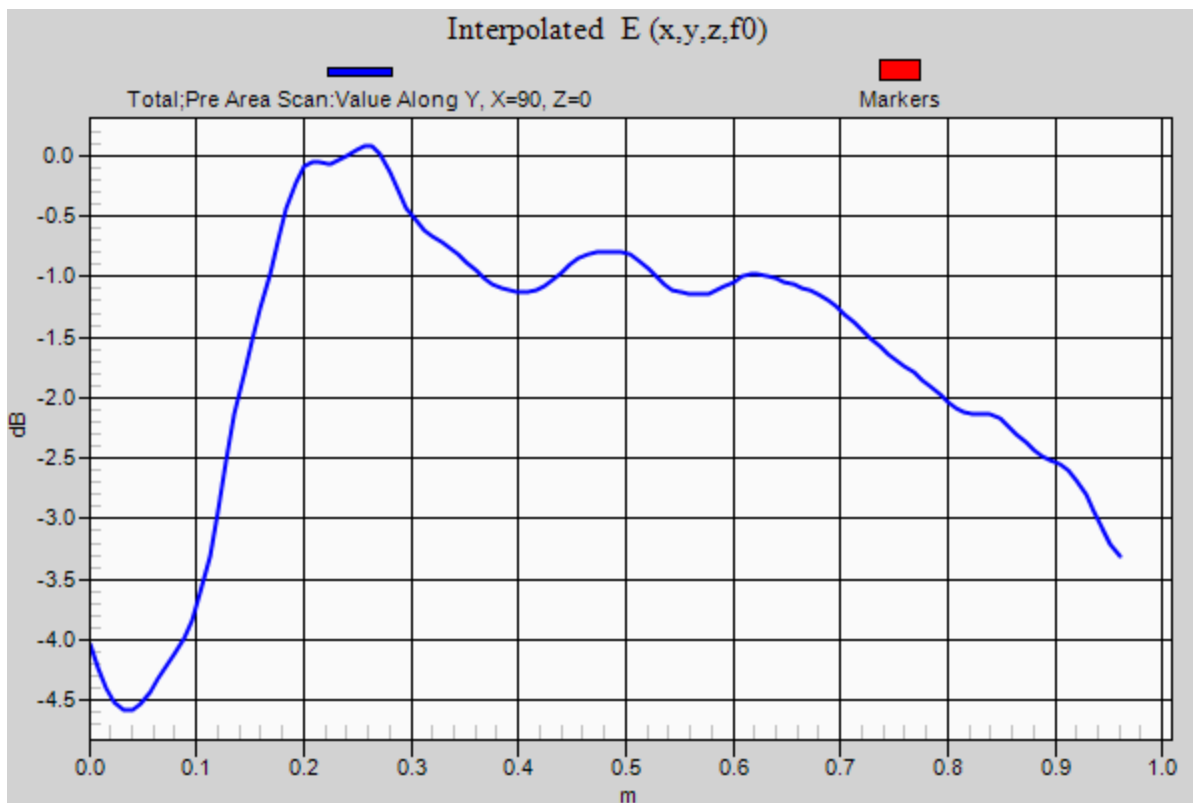
10/Pre Area Scan (121x121x1): Interpolated grid: dx=8.000 mm, dy=8.000 mm, dz=20.00 mm

Maximum value of Total (interpolated) = 41.96 V/m

913MHz/start 770mm/TX5 180 Degrees 0mm/850mm_+25 degrees/Restore Pocket

10/Pre Area Scan (13x13x1): Measurement grid: dx=80mm, dy=80mm, dz=20mm

Maximum value of Total (measured) = 41.55 V/m



913 CW Y-Z RF-Field Plot

Frequency: 913 MHz; Duty Cycle: 1:1; Room Ambient Temperature: 24.0°C; Liquid Temperature: 23.0°C
Medium parameters used: $\sigma = 0$ S/m, $\epsilon_r = 1$; $\rho = 0$ kg/m³

DASY5 Configuration:

- Area Scan Setting: Find Secondary Maximum Within: 2.0 dB and with a peak SAR value greater than 0.0012W/kg
- Electronics: DAE4 Sn1359; Calibrated: 2/10/2017
- Probe: EF3DV3 - SN4041; ConvF(1, 1, 1); Calibrated: 3/14/2017;
- Sensor-Surface: 0mm (Fix Surface)
- Phantom: Z Scans; ;

913MHz/start 770mm/TX5 0mm/850mm_-25 degrees/Restore Pocket 8/Pre Area Scan

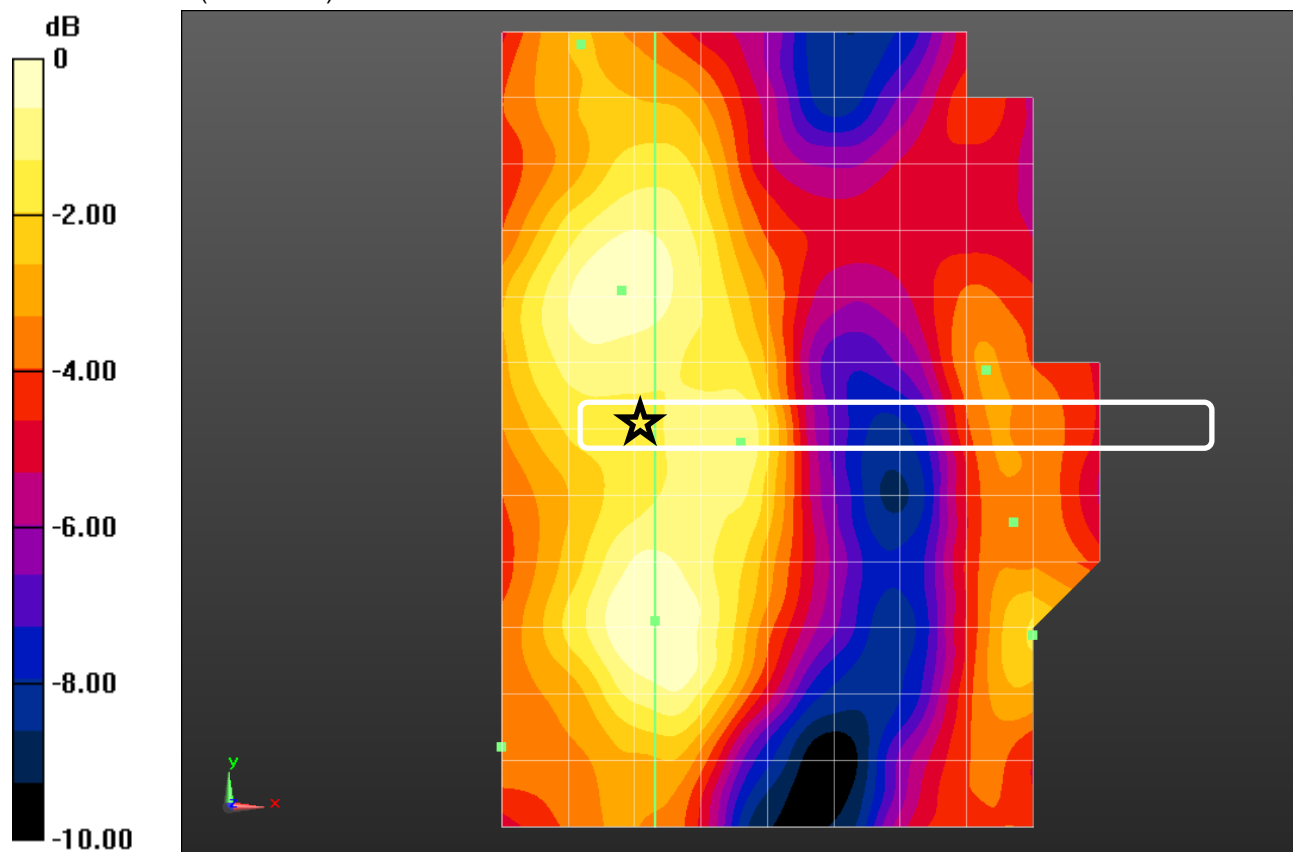
(121x121x1): Interpolated grid: dx=8.000 mm, dy=8.000 mm, dz=20.00 mm

Maximum value of Total (interpolated) = 42.42 V/m

913MHz/start 770mm/TX5 0mm/850mm_-25 degrees/Restore Pocket 8/Pre Area Scan

(13x13x1): Measurement grid: dx=80mm, dy=80mm, dz=20mm

Maximum value of Total (measured) = 41.86 V/m



0 dB = 41.86 V/m = 32.44 dBV/m

913 CW Z RF-Field Plot

Frequency: 913 MHz; Duty Cycle: 1:1

913MHz/start 770mm/TX5 0mm/850mm_-25 degrees/Restore Pocket 8/Pre Area Scan

(121x121x1): Interpolated grid: dx=8.000 mm, dy=8.000 mm, dz=20.00 mm

Maximum value of Total (interpolated) = 42.42 V/m

913MHz/start 770mm/TX5 0mm/850mm_-25 degrees/Restore Pocket 8/Pre Area Scan

(13x13x1): Measurement grid: dx=80mm, dy=80mm, dz=20mm

Maximum value of Total (measured) = 41.86 V/m

