

REMOTE CONTROL LOCOMOTIVE

with sounds, motion & image projecting light

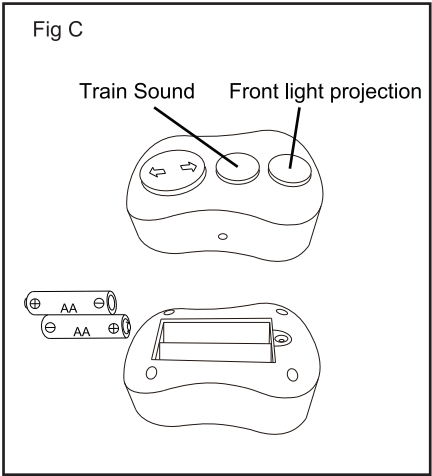
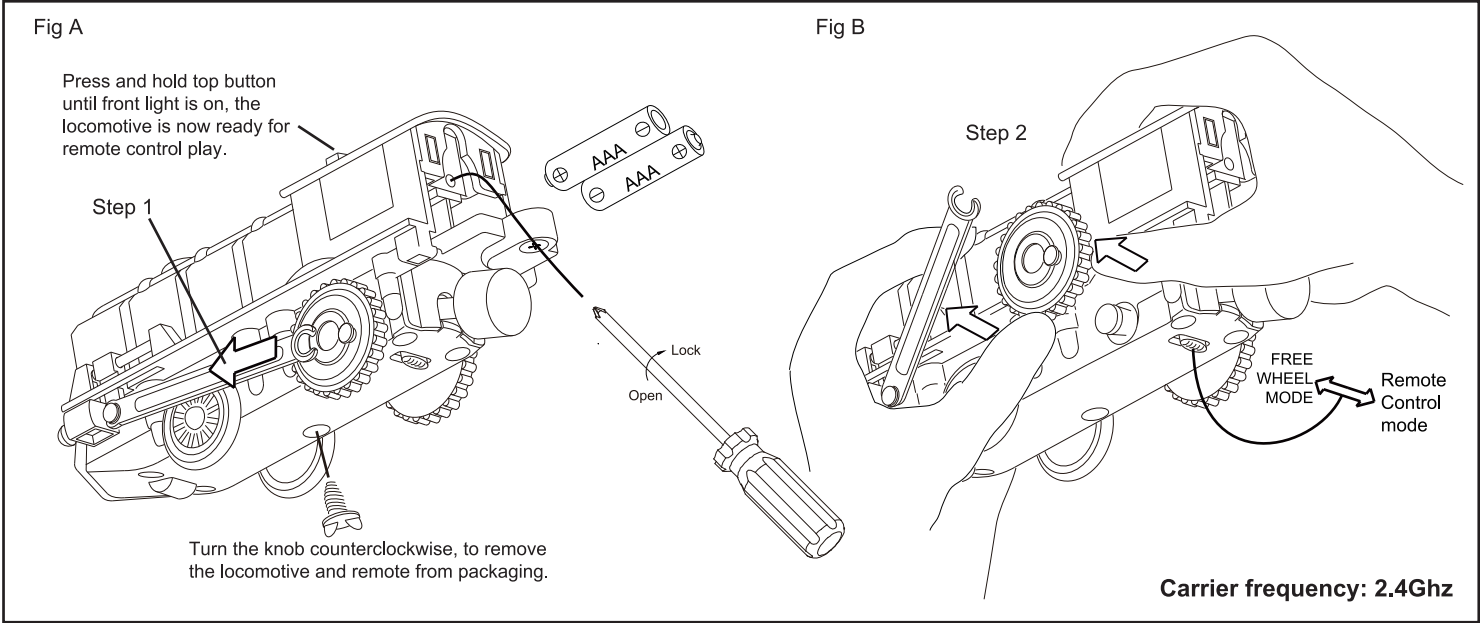
3+
YEARS

AB5016

BATTAT®

User Guide (Adult supervision required):

- The locomotive is powered by 2 x AAA batteries, see Fig A for batteries replacement.
Remote control is powered by 2 x AA, see Fig C.
- Locomotive has 2 play modes. Remote control function(RC) and free rolling wheel mode. see Fig B.
- Press button on roof of locomotive to activate RC function.
- Attach up to 2 additional train cars to locomotive by magnetic hitch.
- The locomotive's rear wheels may become slippery after extended use.
Use a damp cloth to clean the track surface and trains tires, (Do Not Use Soap).
- After locomotive is used for over 100 hours, the rubber on the wheels may start to wear out.
Follow the below instructions to extend the life of the locomotive.
A) Pull crank backward gently until crank is separated from wheel. see Fig A - Step 1.
B) Remove the worn out wheels. see Fig B - Step 2.
C) Press the new pair of rubber tires onto the wheels using a small amount of force.
D) Snap the crank back onto the wheels.
- When the locomotive is not in use for extended periods of time, batteries should be removed.
- If the locomotive becomes derailed take care to ensure locomotive and attached cars are properly on the tracks and the track is sitting flat on the playing surface. (do not place objects under the track)
- Don't leave "MODE" button seen in Fig B in the middle position while the locomotive is powered on as this will damage the motor.
- Do not move the "MODE" button when wheels are turning.
- Hair entanglement may occur if child's head is too close to the motorized wheels of this toy.
If hair entanglement occurs, release the remote's button, shift to "FREE WHEEL MODE", and gently pull entangled hair free.
- If the remote buttons don't trigger the locomotive to move, you must reset the RC function by using one of the following procedures:
1) Open the remote's battery compartment see Fig C, remove the two batteries and reinsert the two batteries and the battery compartment door.
2) Press the button on the roof of the locomotive and any button on the remote control at the same time for 5 seconds.



Warning: Changes or modifications to this unit not expressly approved by the party responsible for compliance could void the user's authority to operate the equipment.

NOTE: This equipment has been tested and found to comply with the limits for a Class B digital device, pursuant to Part 15 of the FCC Rules. These limits are designed to provide reasonable protection against harmful interference in a residential installation. This equipment generates, uses and can radiate radio frequency energy and, if not installed and used in accordance with the instructions, may cause harmful interference to radio communications.

However, there is no guarantee that interference will not occur in a particular installation. If this equipment does cause harmful interference to radio or television reception, which can be determined by turning the equipment off and on, the user is encouraged to try to correct the interference by one or more of the following measures:

- Reorient or relocate the receiving antenna.
- Increase the separation between the equipment and receiver.
- Connect the equipment into an outlet on a circuit different from that to which the receiver is connected.
- Consult the dealer or an experienced radio/TV technician for help.

CAUTION: Follow the battery guideline in this section.

Otherwise, battery life may be shortened or the batteries may leak or rupture.

TRAIN USES 2 x AAA (1.5V) size batteries - Included.

REMOTE USES 2 x AA (1.5V) size batteries - Included.

- Non-rechargeable batteries are not to be recharged.
- Rechargeable batteries are to be removed from the toy before being charged.
- Rechargeable batteries are only to be charged under adult supervision.
- Different types of batteries or new and used batteries are not to be mixed.
- Only batteries of the same or equivalent type as recommended are to be used.
- Batteries are to be inserted with the correct polarity.
- Exhausted batteries are to be removed from the toy.
- The supply terminals are not to be short-circuited.

This device complies with part 15 of the FCC Rules.

Operation is subject to the following two conditions:

- (1) This device may not cause harmful interference,
- (2) this device must accept any interference received, including interference that may cause

