

# Smart Robot albert

# Guide Book



# Smart Robot albert

# Guide Book



# Contents

## Get to Know albert

- albert's Configuration  
Name and Function of Each Components
- albert's Hardware  
Name and Function of Each Component in Peripheral Devices

Get to Know

## Get Ready to Play with albert

- Install the Smart Robot Launcher
- Register the Robot and Peripheral Devices
- Get Ready to Play with albert

Get Ready to Play

## Play with albert

- albert's Remote Control
- albert's Story  
Glutton Alien
- Hurly-Burly Kids market
- Application Overview
- albert Doesn't Like This

Play with Albert

## Service

- Service  
Specification
- Warranty Card
- Precautions

Service



# Get to Know albert!

Get to know my robot friend, albert.



# albert's Configuration



albert's Main Body  
Smartphone Stand  
(Big, medium, small)



Smart pen & Stand



Smart Dice



Geniekids Touch Book 1 ~ 5  
Word List 1



Alien Mukkaebi Card  
(56 pcs)

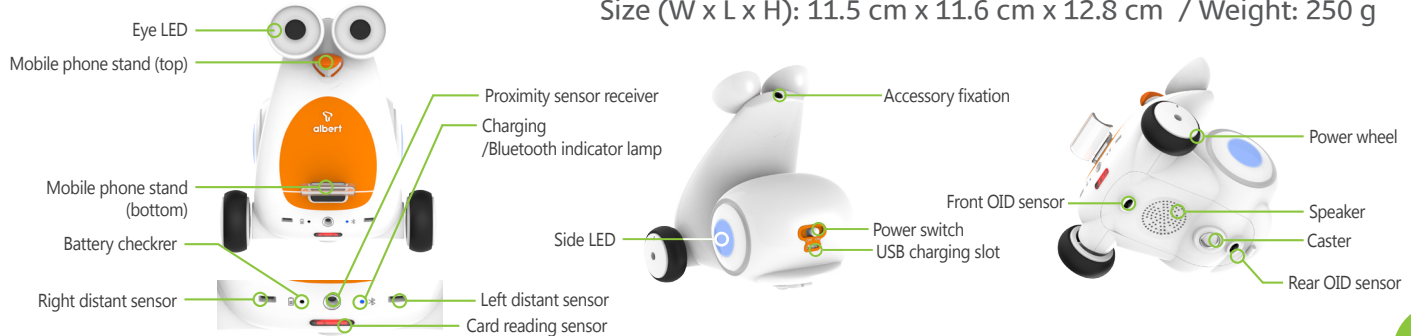


Hurly-Burly Kids market

\* Charging cable is not included. Please use Micro 5-Pin charger.

# Name and Function of Each Components

Size (W x L x H): 11.5 cm x 11.6 cm x 12.8 cm / Weight: 250 g



## Autonomic Mode



The autonomic mode will begin six seconds after turning on a power switch of Albert. Control Albert by blocking the left and right proximity sensor with your hand.

## Smart Installation



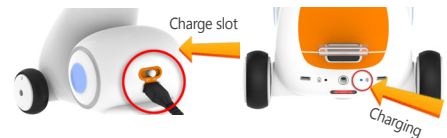
Mount stand on albert's front side depending on your smart phone size.

## Turn on the power switch



Power goes on when power button is moved to the right. Power goes off when power button is moved to the left.

## How to charge robot



Connect your smart phone charger (Micro 5pin charger) to the charging terminal in the rear of robot main body and charge. Separate charger when red charging light in the front of robot main body goes off.

# albert's Hardware



## Internal Sensor

Proximity Sensor x 2,  
OID Sensor x 2,  
Acceleration Sensor  
Light Sensor, Temperature Sensor,  
Battery Level Sensor



## Wireless Auto Connection Bluetooth



## Battery Lasting Time

Battery Lasting Time,  
5 hours for Continuous Operation,  
7 days for Standby  
(Lithium-Polymer Battery)



## Driving Part

2 Wheels, Speaker, Buzzer,  
Full-Color LED for Eye x 2,  
Card reading sensor  
Side LED x 2



## Display Part

Battery Indicator (Red)  
Bluetooth Indicator (Blue)



## Cradle Function

Smart Phone Holding



# Name and Function of Each Component in Peripheral Devices

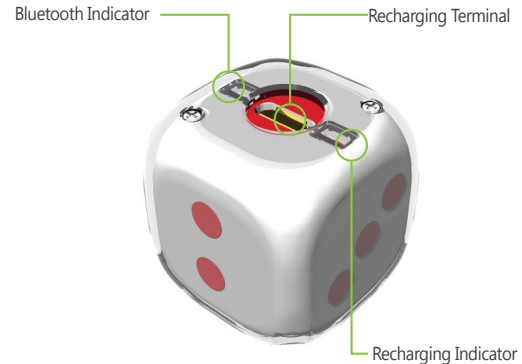
## Smart Pen

Smart Pen is one of the peripheral devices of Smart Robot that reads 65,535 invisible codes printed in books or cards by using optical ID sensor. Smart Pen and Smart Robot are connected through Bluetooth communication. Smart Robot sends data of Smart Pen to the launcher and application.



## Smart Dice

Smart Dice is one of the peripheral devices of Smart Robot that recognizes the spots on the dice. Smart Dice and Smart Robot are connected through Bluetooth communication. Smart Robot sends data of Smart Dice to the launcher and application.





# Get Ready to Play with albert!

Get ready to make albert move!



# Install the Smart Robot Launcher.

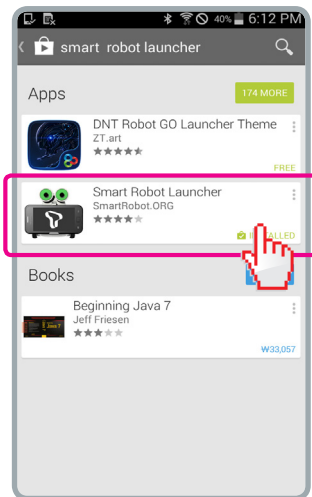
## Smart Robot Launcher

Touch **Google Play Store** .



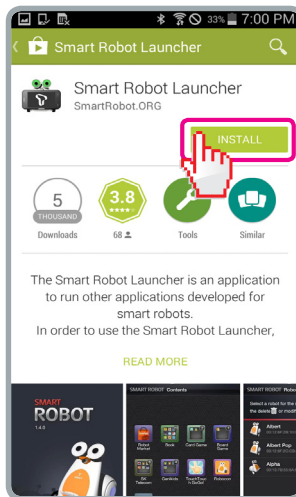
## Smart Robot Launcher Search

Search and touch Smart Robot Launcher.



## Smart Robot Launcher Download

Touch **Installation** and **download Launcher**, and app will be installed on screen.



## Smart Robot Launcher Start

**Start Smart Robot Launcher** and **turn power on**, and Robot will be recognized automatically.



### TIP

Do not skip 'Search Robot that will be registered' page. End Launcher and Robot and make reconnection. Check if smart phone Bluetooth is turned on.

# Register the Robot and Peripheral Devices.

## Robot Connection

Touch End after inputting the name, and screen will be moved to the wallpaper.

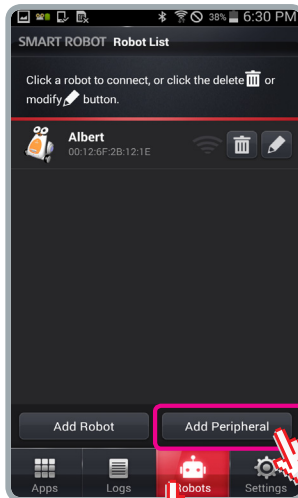


### TIP

Robot makes no sound or Robot makes no or slow movement after connection. Disconnect Robot, turn off both Smart Phone and Robot, and then make reconnection.

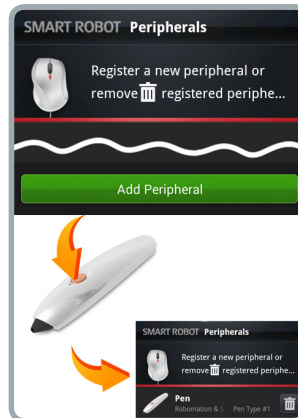
## Peripheral Device Registration

Touch **Robots** tab on bottom of screen and register Smart Dice or Smart Pen in Peripheral Device menu.



## Smart Pen Registration

Touch Registration button on bottom of screen and push Smart Pen button.

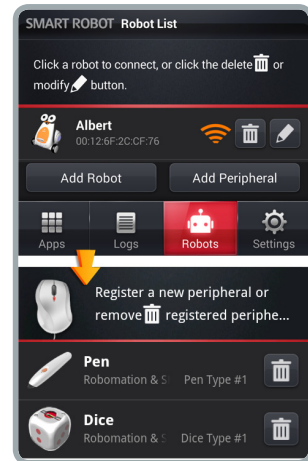


### TIP

If red light shows up when pushing Smart Pen button, it means that battery level is low. Therefore, charge it before use.

## Smart Dice Registration

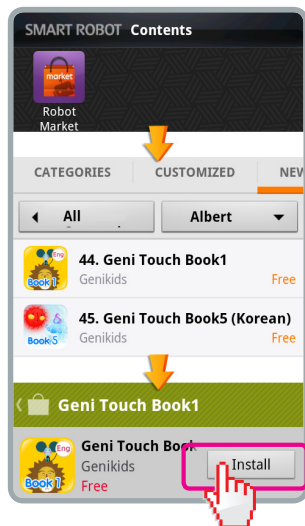
Touch Registration button on bottom of screen. It will be automatically registered when Smart Dice is thrown 10 cm or higher in the air.



# Get Ready to Play with albert

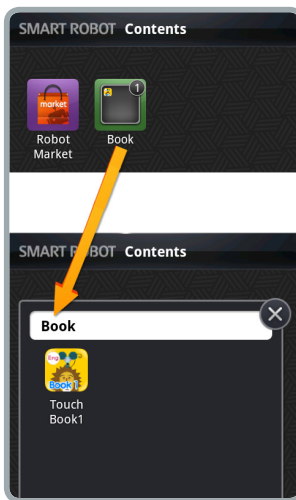
## App Download

Touch '**Smart Robot Market**' on the wallpaper, and download and install the app in the market.



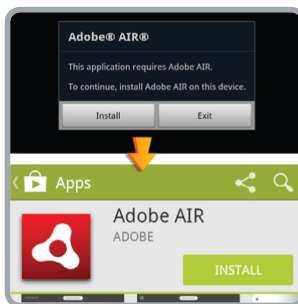
## Contents Use

Touch the app in the folder created on the wallpaper, and use contents.



## Adobe AIR Installation

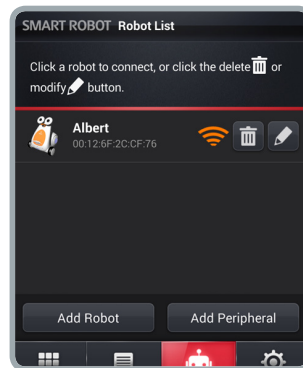
Search and install "**Adobe AIR**" in Google Play Store.



1. Start albert app.
2. Installation page shows up automatically.
3. Start installation, and screen will move to [Google Play Store](#).
4. Install **Adobe AIR**
5. Push **Back** button on smart phone and return to Smart Robot Launcher.
6. Now use the app.

## Robot Deletion & Reconnection

Touch **Robot** tab on bottom and touch **Recycle Bin**, and Robot will be deleted.



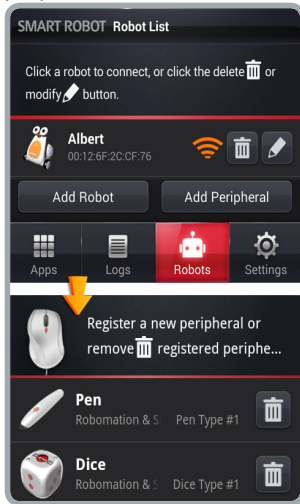
### TIP

If Robot does not work normally, check the battery or delete Robot and reconnect it.

# Get Ready to Play with albert

## Peripherals Deletion & Reconnection

Touch Robots tab on bottom and go to the Peripheral device registration menu. Touch the Recycle Bin button on the top. This will delete the peripheral device.



## Recharging

1. Connect **smart phone charger** with albert or peripheral device.
2. When charging the battery of albert or peripheral device, battery lamp is **turned red**, and When charging is completed, the light is turned off.



albert Recharging Time  
**2.5 hours**(for full charge)  
Battery lasts 5 hours for continuous operation /  
\* Recharging time may differ according to operation time.

Smart Pen Recharging Time  
**1 hour for full charge**  
Battery lasts 5 hours for continuous operation / 2 months for standby

Smart Dice Recharging Time  
**30 minutes for full charge**  
2 weeks for standby / 1000-times dice throw after full charge

## Problem Solution Tip!

1. Robot makes no or slow movement.  
→ Check the battery of Robot or peripheral device and recharge it or make reconnection.
2. Robot make no or slow recognition of Smart Dice.
3. Smart Pen makes no recognition of books.  
→ Set 'Do Not Call' in Setting menu in Launcher.
4. What if having a phone call when using Robot?  
→ Set 'Do Not Call' in Setting menu in Launcher.
5. When Robot is connected normally, it moves with sound of 'Hello! My name is albert of SK Telecom. I'm happy to meet you, master'  
→ If Robot does not make this sound, refer 'Robot Deletion & Reconnection' in User Manual.





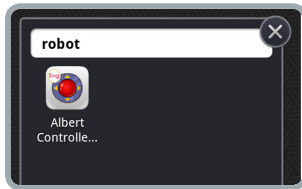
# Play with albert!

**You're now ready to play with albert! Have fun with albert, and get to know more about him.**



# albert's Remote Control!

Use your smartphone  
to make albert move, sing, and talk!



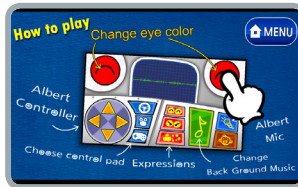
Start albert Remote Controller in  
the launcher.



Take off your smart phone from albert.



Select Game Method on the main  
screen and check various functions  
of albert Remote Controller.



Check various functions of albert  
Remote Controller such as control,  
emotion, eye, color, music and microphone.



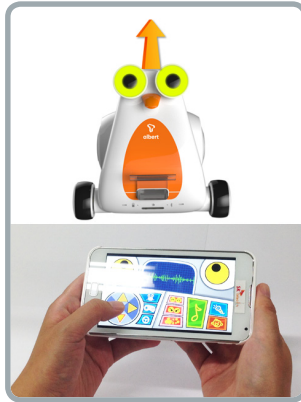
Select Start in the menu and start  
albert Remote Controller~

# albert's Remote Control!

Use your smartphone to make albert move, sing, and talk!



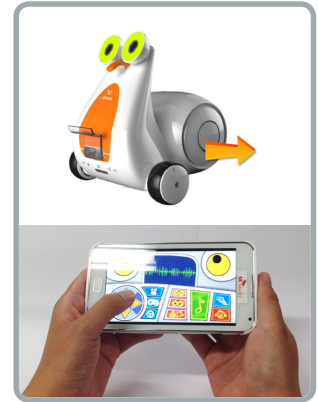
Move albert forward.



Move albert backward.



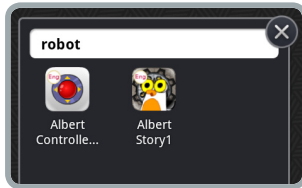
Move albert left.



Move albert right.

# albert's Story

Do you want to know why my friend albert came to Earth?  
Enjoy various events and listen to albert's story.



albert Story is composed of 5 stories of My Friend Robot albert. You can install your smart phone on albert and check various events.



My Friend Robot albert 1 shows the reason and the background of albert's arrival at Earth.