



SP0551

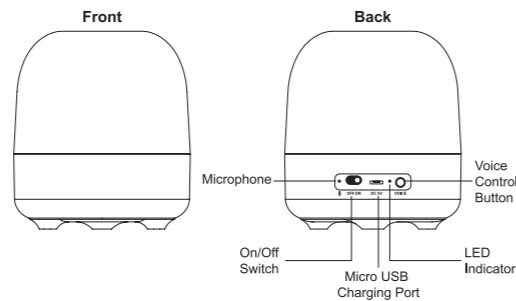
# NOVA

WIRELESS SMART SPEAKER

## INSTRUCTION MANUAL

Thank you for purchasing the NOVA Wireless Smart Speaker. This manual provides more information about this product, please read the instructions before using.

### Product Overview



### Package Contents

- NOVA Wireless Smart Speaker x 1pc
- Micro USB Cable x 1pc
- Instruction Manual x 1pc

### Technical specification

- Driver Diameter: 52 mm
- Impedance: 4 Ohms
- Battery Type: Li-ion Battery 3.7V
- Battery Capacity: 300 mAh
- Charging Time: 2 Hours
- Playing Time: 1.5 - 2 Hours
- Bluetooth Range: 32.8 Feet

### Part 1: Basic wireless speaker function

#### Power On

Slide the ON/OFF Switch to the "ON" position.

#### Power Off

Slide the ON/OFF Switch to the "OFF" position.

#### 1.1 Pair wireless speaker with your mobile device

- Keep the distance between your wireless speaker and mobile phone (or other devices) within 32.8 Feet.
- Power on the wireless speaker.
- Activate the Bluetooth function on your phone within range and select "BT\_NOVA\_SPK" from the list shown.
- You will hear a beep sound when pairing is successful.

#### 1.2 Reconnect wireless speaker to your mobile device

When powered on, the Bluetooth speaker will automatically connect with the last successfully paired device.

#### 1.3 Charging your wireless speaker

- Use the Micro USB cable provided with this wireless speaker.
- Connect the Micro USB plug to Micro USB charging port on the speaker, then connect the USB plug to a USB port on a computer or wall adapter to begin charging.
- The light will turn red while charging and will turn off once fully charged.

#### NOTE:

- You must select a qualified charger from a regular manufacturer.
- You must charge the wireless speaker if it has been not used for more than 12 months.



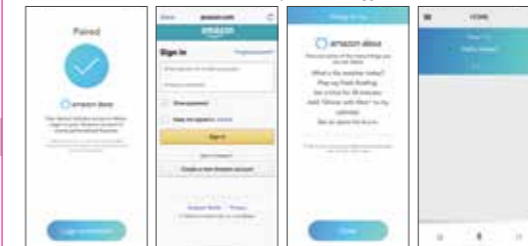
### Part 2: Alexa voice services

- Pair the NOVA Wireless Smart Speaker to your Bluetooth device. Please follow Step 1.1.
- Download and install the free "TITAN SPEAKER" app on Apple Store for iOS device / Google Play Store for Android device.

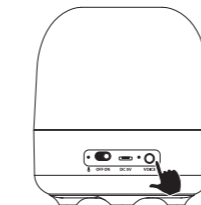


- Open the TITAN SPEAKER app and log into your Amazon account. If you do not have an Amazon account, you will need to create one.

Note: You cannot use Alexa Voice Services if you are not logged into an Amazon account.



- Click the voice control button on NOVA Wireless Smart Speaker to interact with Amazon Alexa Service. Also you can click the TITAN SPEAKER app microphone icon to do the same function.



1. Click the voice control button on NOVA Wireless Smart Speaker.



2. Click the voice control button on TITAN SPEAKER app.

### Part 2: Alexa voice services

- After you clicked the voice control button on NOVA Wireless Smart Speaker or TITAN SPEAKER app, you can hear a beep sound for starting an interaction.

- You can change the location for your Alexa devices in the Amazon Alexa app:

- Go to the menu of Amazon Alexa app and select **Alexa Devices**.
- Select your device.
- Select **Device location**.
- To change the country, tap **Change** near the current country. Select the new country and then tap **Done**.
- Enter your complete address, and then select **Save**.

Note: If you have multiple Alexa devices on your Amazon account, make sure to update the location for each device.

- Here are the examples of commands:

#### Basic Commands:

Conversation: "Let's Chat."
Ask for date: "What's the date?"
Ask for time: "What time is it?"
Play music: "Play music." or "Play [song name] of [artist]."
Alarm: "Set timer in 30 minutes."

#### News and Weather:

Check headlines: "What's in the news?"
Check weather: "What's the weather?"
Get traffic information: "What's traffic like?"
Get a weather forecast: "What's the weather like this weekend?"

#### Entertainment:

Find an actor's latest work: "What is [actor]'s latest movie?"
Find out who sings a particular song: "Who sings the [song title]?"
Get album information: "What year did [band] release [song or album]?"

### Part 2: Alexa voice services

#### Food and Businesses:

Find a nearby restaurant: "Find me a nearby pizza restaurant in [city]."
Find a nearby library: "What's the nearest library?"
Find a nearby store: "Find nearby Five Below."

#### Math and Score:

Basic math: "What's 5 plus 8?" or "What's 50 times 63?"
Flip a coin: "Flip a coin."
Pick a number: "Pick a number between 1 and 50."

#### Definitions and Spelling:

Get the definition of a word: "What's the definition of [word]?"
Get the spelling of a word: "How do you spell [word]?"

#### Sports

Check the results of a finished game: "What was the score of the [team] game?"
Check the schedule of the next game: "When do the [team] play next?"

#### Fun:

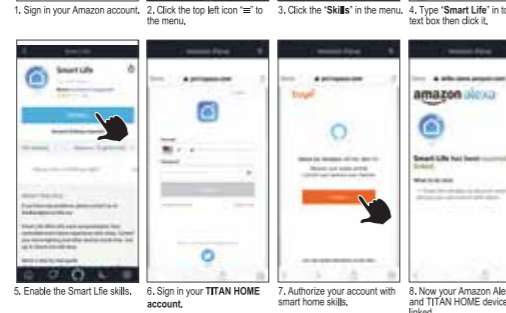
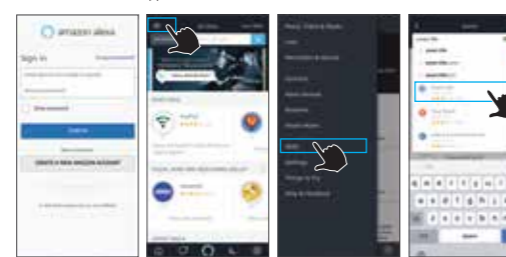
"How are you?"
"Tell me a joke."
"Sing happy birthday."
"Sing Christmas Carol."

### Part 3: Voice control TITAN HOME devices

- Get the TITAN WIFI SMART BULB (XX-0019) and WIFI SMART PLUG (XX-0017) from Five Below stores.
- If you don't have "TITAN SPEAKER" app, please follow the steps 2.1 and 2.2 to install.
- Also you need to download another two free apps on Apple Store for iOS device/ Google Play Store for Android device: "Amazon Alexa" and "TITAN HOME".



- After set up your TITAN HOME devices (please read the instruction manual of TITAN HOME devices), then follow below steps to link the TITAN HOME devices to Amazon Alexa app.



### Part 3: Voice control TITAN HOME devices



#### Notes:

You can rename your devices in TITAN HOME app, and Alexa will refer to them by the same name. For example: you rename a Wifi Smart Bulb to "Bedroom" or a Wifi Smart Plug to "Heater", then Amazon Alexa app will use that same name later on. Alternatively, you create an Alexa group like "Living Room" or "Kitchen", and add the device to the group, Alexa will recognize the group name in the Amazon Alexa app.

- Use NOVA WIRELESS SPEAKER to control your TITAN HOME devices, please see below command examples:

#### WIFI SMART BULB:

"Turn on [device name]."
"Set [device name] to orange."
"Set [group name] to 50%."
"Dim [group name] light."

#### WIFI SMART PLUG:

"Turn on [device name]."
"Turn off [device name]."

### ⚠ Safety instructions for the lithium battery and charging the product

- The input voltage to the product is 5V 1A.
- In order to charge the product in safe manner and reliable conditions, please only adopt certified appropriate charger/ adapter for charging the product.
- Only charge the product at ambient temperatures between 10 deg °C/ 50 deg °F and 40 deg °C/ 104 deg °F.
- Do not heat above 70 deg °C/ 158 deg °F, eg. Do not expose to sunlight or throw into fire.
- Switch off the product after use.
- Please note that we won't take any responsibility for any wrong operation (eg. Voltage higher than 5V) as this may result in severe injury or loss of property, and we cannot control the operating process during the time the user using this product.
- In extreme cases, abuse or misuse of Lithium battery pack can lead to explosion, heat generation, fire development or smoke development.

### FCC STATEMENT

- This device complies with Part 15 of the FCC Rules. Operation is subject to the following two conditions:
  - This device may not cause harmful interference.
  - This device must accept any interference received, including interference that may cause undesired operation.
- Changes or modifications not expressly approved by the party responsible for compliance could void the user's authority to operate the equipment.

NOTE: This equipment has been tested and found to comply with the limits for a Class B digital device, pursuant to Part 15 of the FCC Rules. These limits are designed to provide reasonable protection against harmful interference in a residential installation. This equipment generates uses and can radiate radio frequency energy and, if not installed and used in accordance with the instructions, may cause harmful interference to radio communications. However, there is no guarantee that interference will not occur in a particular installation. If this equipment does cause harmful interference to radio or television reception, which can be determined by turning the equipment off and on, the user is encouraged to try to correct the interference by one or more of the following measures:

- Reorient or relocate the receiving antenna.
- Increase the separation between the equipment and receiver.
- Connect the equipment into an outlet on a circuit different from that to which the receiver is connected.
- Consult the dealer or an experienced radio/TV technician for help.

#### RF warning statement:

The device has been evaluated to meet general RF exposure requirement. The device can be used in portable exposure condition without restriction.

FCC ID: 2ADM5-SP0551

Made Exclusively for Five Below  
Distributed by Zeeva International Limited  
Suite 1006C-8, 10th Floor, Exchange Tower,  
33 Wang Chiu Road, Kowloon Bay,  
Hong Kong, China

Keep all relevant information for future reference

