

SPEED REMOTE CONTROL BOAT

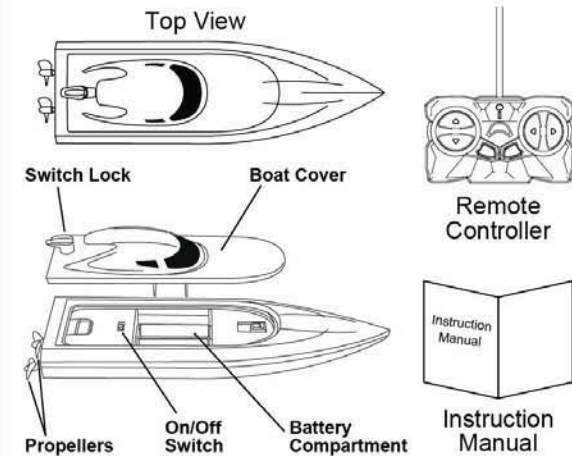
Instruction Manual

Thank you for purchasing the Remote Control Speed Boat. This manual provides more information about this RC Speed Boat, please read the instructions before using.

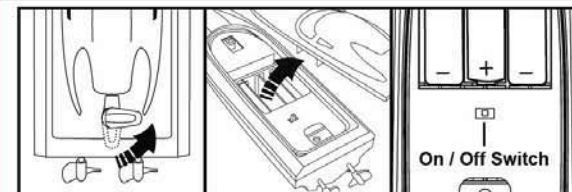


**AGES
8+**

Product Overview

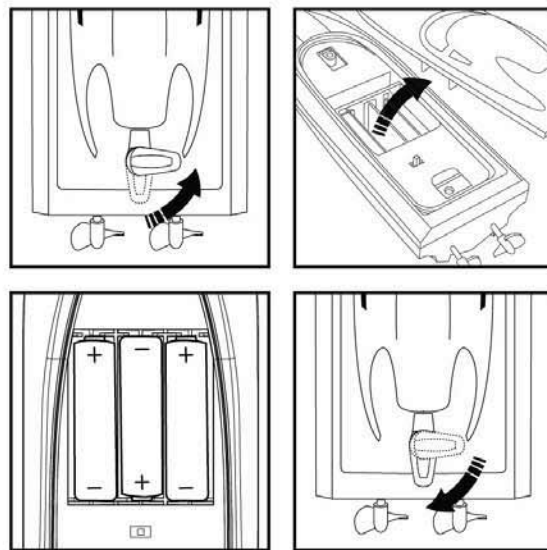


Boat Power On/Off



1. Rotate the switch to the right and unlock the cover.
2. Remove the Cover.
3. Power On/Off
Slide the ON/OFF Switch to ON to turn on the Remote Control Speed Boat.
4. Put back in place the cover and lock it.

Batteries Installation-Boat

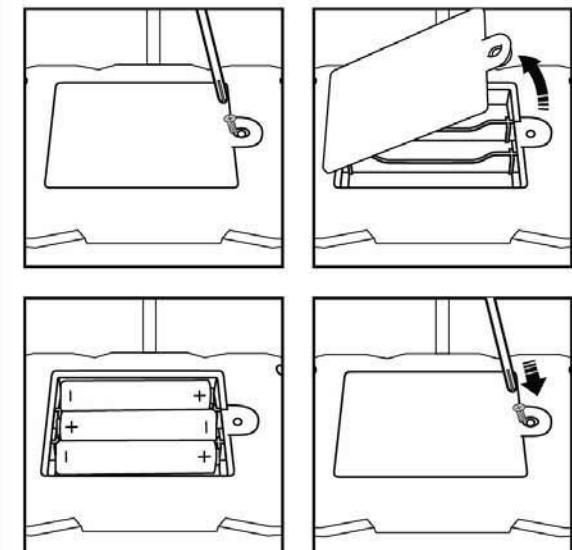


To install batteries into the Remote Control Speed Boat, rotate the switch to right to open the boat cover. Insert 3 x "AA" 1.5V batteries (Not Included) into the battery box. Batteries should be placed as shown on the diagram. Put back in place the boat cover and rotate the switch to left to lock the cover.

Notice:

When placing the batteries, you must insert according to the correct polarity, the Remote Control Speed Boat won't function if batteries are reversed.

Batteries Installation-Remote Controller



To install batteries into the Remote Controller, unscrew the screw on the battery box cover to open the battery compartment. Insert 3 x "AAA" 1.5V batteries (Not Included) into the battery box. Batteries should be placed as shown on the diagram. Put back in place the battery box cover and tighten the screw.

Notice:

When placing the batteries, you must insert according to the correct polarity, the Remote Controller won't function if batteries are reversed.

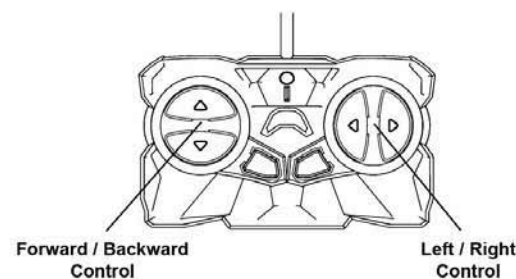
Package Contents

- Remote Control Speed Boat x 1
- Remote Controller x 1
- Instruction Manual x 1

Specifications

- Power Supply:
Remote Control Speed Boat Power Supply:
3 x "AA" 1.5V Batteries (Not Included)
Remote Controller Power Supply:
3 x "AAA" 1.5V Batteries (Not Included)
Frequency: 27.145MHz (Blue Boat)
40.68MHz (Red Boat)
49.86MHz (Green Boat)

Remote Controller



Performance Tips

1. Do not drive the Remote Control Speed Boat in the sea or lake.
2. Do not drive the Remote Control Speed Boat in windy or rainy weather.
3. Do not drive the Remote Control Speed Boat into any sharp object.
4. Keep fingers, hair and loose clothing away from the propellers.

Care and Maintenance

Always use dry and soft cloth to clean this product.

Avoid this product from being exposed to sunlight or heat.

Avoid to immerse this toy into the water with the cover unlocked, otherwise, the electronic parts may be damaged.

Check the product regularly. If any damages are discovered, please stop using immediately, until it is completely repaired in good working condition.

IMPORTANT: BATTERY INFORMATION

CAUTION:

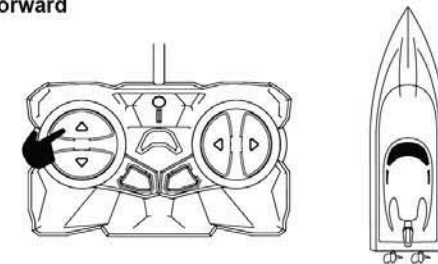
1. TO AVOID BATTERY LEAKAGE
 - a. Always follow the instructions carefully. Use only batteries specified and be sure to insert them correctly by matching the + and - polarity markings.
 - b. Do not mix old batteries and new batteries or standard (carbon-zinc) with alkaline batteries.
 - c. Remove exhausted or dead batteries from the product.
 - d. Remove batteries if product is not to be played with for a long time.
 - e. Do not short-circuit the supply terminals.

2. Should this product cause, or be affected by local electrical interference, move it away from other electrical equipment. Reset (switching ON & OFF again or removing and re-inserting batteries) if necessary.

Operate Your Boat

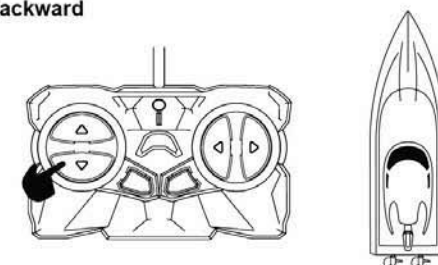
Note: To avoid losing control, always pay attention when playing the Remote Control Speed Boat.

Forward



Press the forward button to move forward the boat

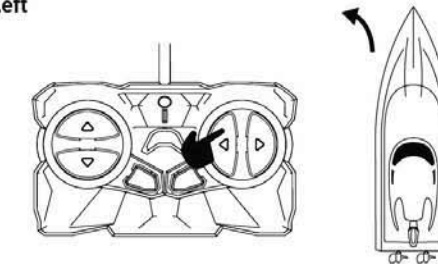
Backward



Press the backward button to move backward the boat

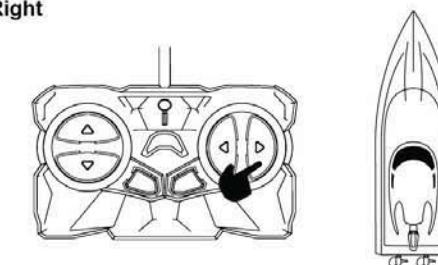
Operate Your Boat

Left



Press the left button to turn left the boat

Right



Press the right button to turn right the boat

Warning

This product is suitable to be used by people who has operating experience in remote toy or aged no less than 8 years old.

Please do not put the product in your mouth to prevent choking hazard of small parts.

Please do not put the finger into available interspaces.

Please do not play the product in a brutal way such as throwing, crashing or twisting it.

Please store the smaller-sized product accessories in places that are out of reach of children, in order to avoid the occurrence of accidents.

Avoid placing the batteries in places in high temperatures and avoid exposure to heat.

When young children are operating the product, it shall be ensured that the adults are guiding and making sure the product control is within the viewing range of the controller (or instructor) so that it makes the control of the toy more convenient.

When the product is not in use, please switch off the power supplies of the toy, and remove the batteries from the product.

Please note that we won't take any responsibility for any wrong operation as this may result in severe injury or loss of property, and we cannot control the operating process during the time when the user assembles or uses this product.

Once this product is sold, we won't be responsible for any safety responsibility during the time the user operates or uses controls this products.

FCC Statement

This device complies with the part 15 of the FCC rules. Operation is subject to the following two conditions:(1) this device may not cause harmful interference, and (2) this device must accept any interference received, including interference that may cause undesired operation.
Caution: changes or modifications not expressly approved by the party responsible for compliance could void the user's authority to operate the equipment.

NOTE: This equipment has been tested and found to comply with the limits for a Class B digital device, pursuant to Part 15 of the FCC Rules. These limits are designed to provide reasonable protection against harmful interference in a residential installation. This equipment generates, uses and can radiate radio frequency energy and, if not installed and used in accordance with instructions may cause harmful interference to radio or television reception, which can be determined by turning the equipment off and on. The user is encouraged to try to correct the interference by one or more of the following measures:
• Reorient or relocate the receiving antenna.
• Increase the separation between the equipment and receiver.
• Connect the equipment into an outlet on a circuit different from that to which the receiver is connected.
• Consult the dealer or experienced radio/ TV technician for help.

RF warning statement:

The device has been evaluated to meet general RF exposure requirement. The device can be used in portable exposure condition without restriction.

27.145MHz (Blue Boat): FCC ID: 2ADM5-ET-0099-27
40.68 MHz (Red Boat): FCC ID: 2ADM5-ET-0099-40
49.86MHz (Green Boat): FCC ID: 2ADM5-ET-0099-49



Distributed by 1616 Holdings, Inc.
701 Market Street, Suite 200
Philadelphia, PA 19106

Keep All Relevant Information for Future Reference

ITEM# ET-0099