

Size: 490 x110(D)mm

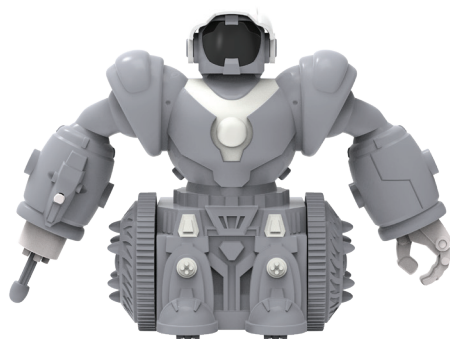


10+

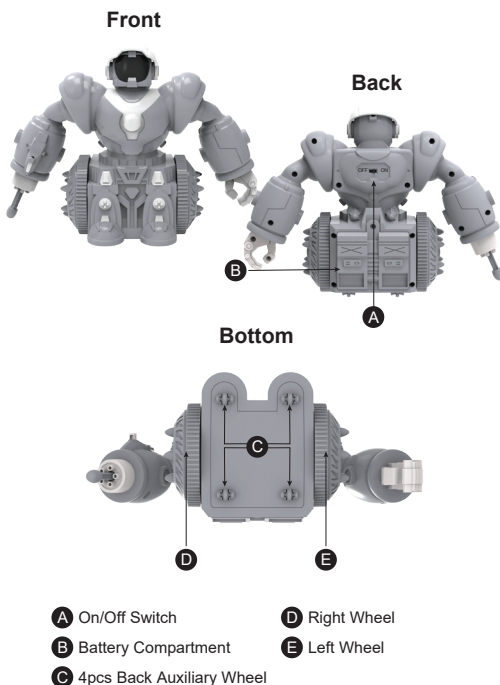


Instruction Manual

Thank you for purchasing the Dartbot. This manual provides more information about this product, please read the instructions before using.



Product Overview



Package Contents

DARTBOT x 1pc
DART x 2pcs
Instruction Manual x 1pc

Specifications

Power supply: 3 x "AA" 1.5V Batteries (Not Included)
Bluetooth Range: 32.8 Feet

Download DARTBOT App

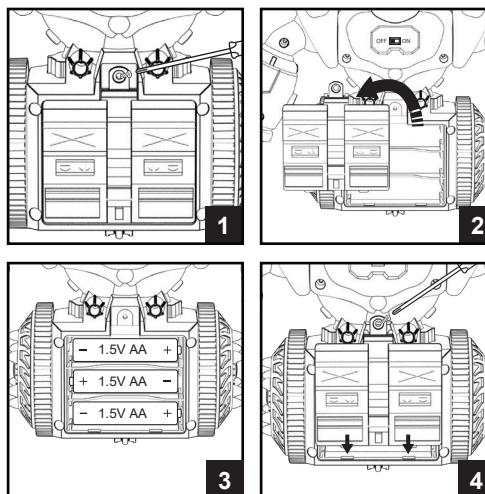


Compatible With: iOS & Android

Method 1: Scan the QR Code for quick download.
Method 2: Search "DARTBOT" in the Apple Store or Google Play Store.
Bluetooth device request:
For Apple device, iOS 8.0 or above is request.
For Android device, Ver 6.0 or above is request.

Batteries Installation

1. Switch off DARTBOT.
 2. Unscrew the screw on the battery compartment.
 3. Insert 3 x "AA" 1.5V batteries (Not Included) into the battery compartment.
 4. Batteries should be placed as shown on the diagram (3).
 5. Close the battery compartment cover and fasten the screw.
- Note:
When inserting the batteries, you must insert according to the correct polarity, the DARTBOT will not function if batteries are reversed.

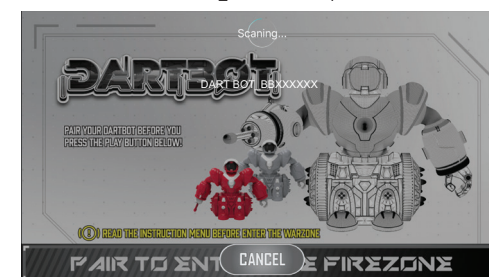


Getting Started

1. Switch on the DARTBOT button and turn on your Bluetooth device.
2. Open the DARTBOT app and click the Bluetooth button on the main page.



3. Click the name "DART BOT_BBXXXXXX" to pair the DARTBOT.

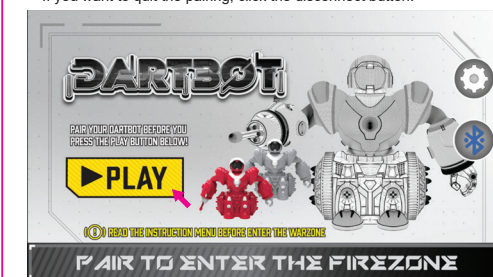


Getting Started

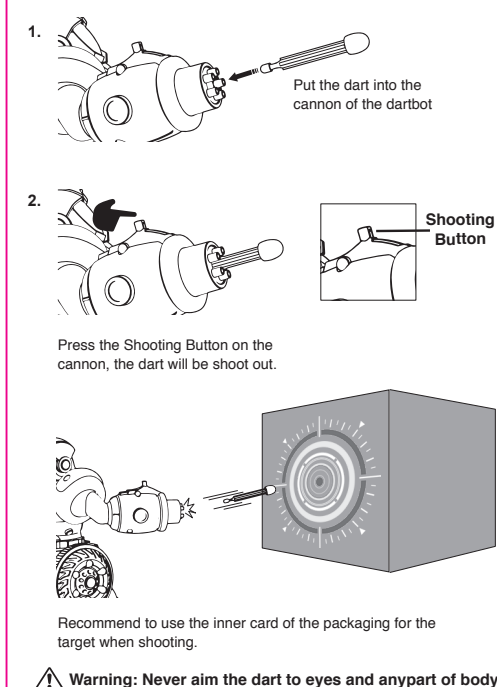
4. When the DARTBOT is connected to your Bluetooth device, the screen will be shown "Success" and the logo of Bluetooth button turn to Blue color.



5. You can click play button to start DARTBOT. If you want to quit the pairing, click the disconnect button.



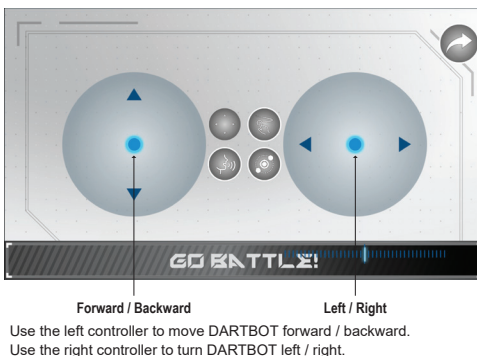
How to shoot the dart



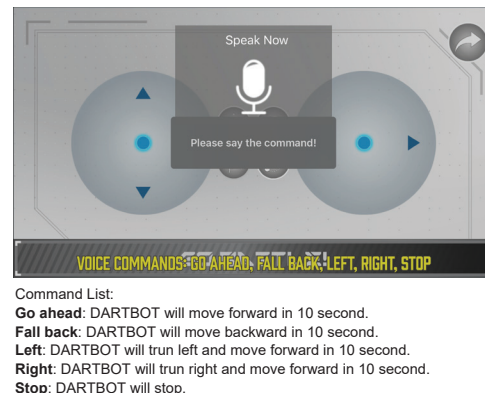
Control Interface Description



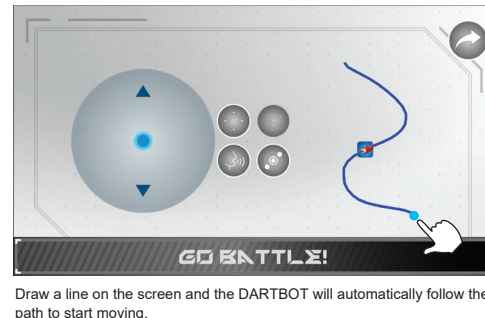
Press Speed Control



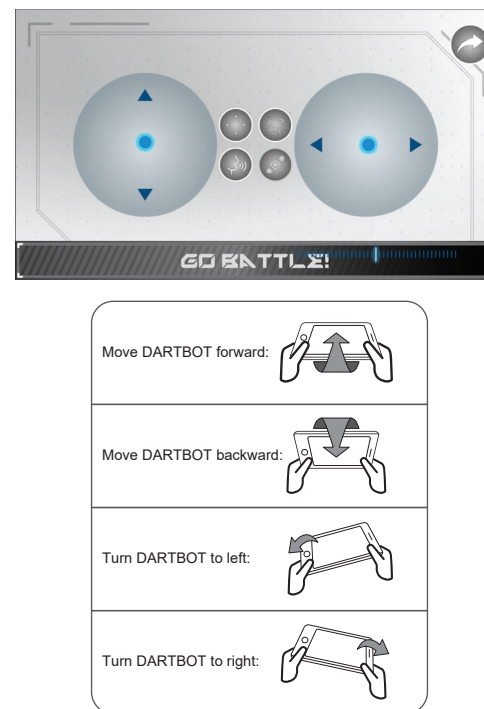
Press Voice Control



Press Gesture Control



Press Gravity Control



Setting

Throttle Accelerometer Setting
Go to the main page, then click the **Setting** icon (see below).



Switch the on/off button of the throttle accelerometer (see below). When you switch off the throttle accelerometer, you can only use the Speed control to control forward and backward in Gravity Control mode.



Performance Tips

1. Do NOT drive the DARTBOT on grass, sand or go through water.
2. Do NOT drive the DARTBOT in windy or rainy weather.
3. Do NOT drive the DARTBOT into any hard object.
4. Keep fingers, hair and loose clothing away from DARTBOT.

Care and Maintenance

- Always use dry and soft cloth to clean this product.
- Avoid this product from being exposed to sunlight or heat.
- Avoid immersing these toys in water, otherwise, the electronic parts may be damaged.
- Check the product regularly. If any damages are discovered, please stop using immediately, until it is completely repaired in good working condition.

IMPORTANT: BATTERY INFORMATION

- CAUTION:**
1. TO AVOID BATTERY LEAKAGE
 - a. Always follow the instructions carefully. Use only batteries specified and be sure to insert them correctly by matching the + and - polarity markings.
 - b. Do not mix old batteries and new batteries or standard (carbon-zinc) with alkaline batteries.
 - c. Remove exhausted or dead batteries from the product.
 - d. Remove batteries if product is not to be played with for a long time.
 - e. Do not short-circuit the supply terminals.
 2. Should this product cause, or be affected by local electrical interference, move it away from other electrical equipment. Reset (switching ON&OFF again or removing and re-inserting batteries) if necessary.

Warning

This product is suitable to be used by people who has operating experience in rc car model or aged no less than 10 years old.

Please do not put the product in your mouth to prevent choking hazard of small parts.

Please do not put the finger into available interspaces.

Please do not play the product in a brutal way such as throwing, crashing or twisting it.

Please store the smaller-sized product accessories in places that are out of reach of children, in order to avoid the occurrence of accidents.

Avoid placing the batteries in places in high temperatures and avoid exposure to heat.

When young children are operating the product, it shall be ensured that the adults are guiding and making sure the product control is within the viewing range of the controller (or instructor) so that it makes the control of the robot more convenient.

When the product is not in use, please switch off the power supplies of the robot, and remove the batteries from the product.

Please note that we won't take any responsibility for any wrong operation as this may result in severe injury or loss of property, and we cannot control the operating process during the time when the user assembles or uses this product.

Once this product is sold, we won't be responsible for any safety responsibility during the time the user operates or uses controls this products.

FCC Statement

This device complies with the part 15 of the FCC rules. Operation is subject to the following two conditions:(1) this device may not cause harmful interference, and (2) this device must accept any interference received, including interference that may cause undesired operation.

Caution: changes or modifications not expressly approved by the party responsible for compliance could void the user's authority to operate the equipment.

NOTE: This equipment has been tested and found to comply with the limits for a Class B digital device, pursuant to Part 15 of the FCC Rules. These limits are designed to provide reasonable protection against harmful interference in a residential installation. This equipment generates, uses and can radiate radio frequency energy and, if not installed and used in accordance with instructions may cause harmful interference to radio or television reception, which can be determined by turning the equipment off and on. The user is encouraged to try to correct the interference by one or more of the following measures:

- Reorient or relocate the receiving antenna.
- Increase the separation between the equipment and receiver.
- Connect the equipment into an outlet on a circuit different from that to which the receiver is connected.
- Consult the dealer or experienced radio/ TV technician for help.

RF warning statement:
This equipment complies with FCC radiation exposure limits set forth for an uncontrolled environment. This equipment should be installed and operated with minimum distance 20cm between the radiator& your body

Item# ET-0015
Made in China



FCC ID: 2ADM5-ET-0015

Keep All Relevant Information for Future Reference