

## Label and Information

---

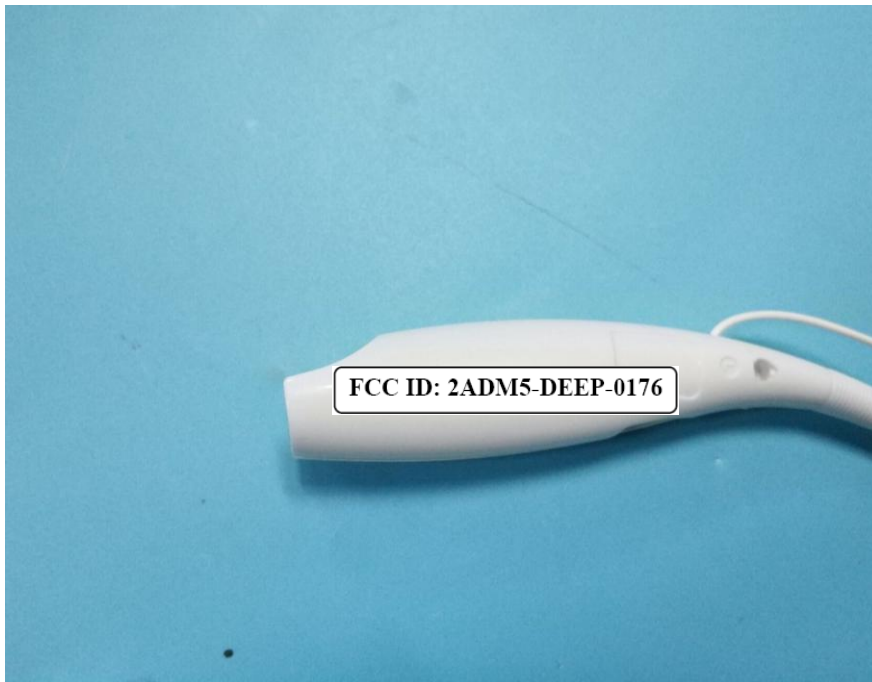
### FCC Label Sample

**FCC ID: 2ADM5-DEEP-0176**

### FCC Label Specifications

Text is Black in color and is justified. Labels are printed in indelible ink on permanent adhesive backing or silk-screened onto the EUT or shall be affixed at a conspicuous location on the EUT. Where the EUT is constructed in two or more sections connected by wires and marketed together, the above statement is required to be affixed only to the main control unit. When the EUT is so small or for such use that it is not practicable to place the statement on it, the above information shall be placed in a prominent location in the instruction manual or pamphlet supplied to the user or, alternatively, shall be placed on the container in which the device is marketed.

### FCC Label Location



\*\*\*\*\* END OF REPORT \*\*\*\*\*