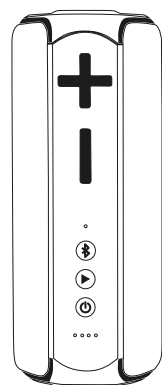


尺寸: 90*110mm
材质: 128双铜
工艺: 4色+风琴折页



Vortex Blast waterproof 30W LED
light portable speaker

VORTEX

USER MANUAL

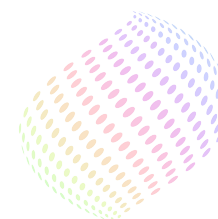
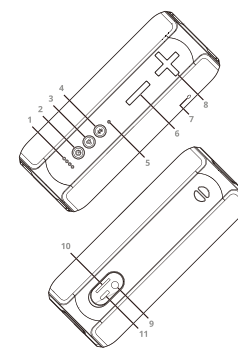
Thank you for purchasing Vortex Blast waterproof 30W LED light portable speaker. Please read this user manual carefully before operating and keep these instructions for future reference. Vortex Blast is a unique designed IPX6 waterproof 30W LED light portable speaker, which support V5.3 bluetooth agreement, it is compatible with Smart cellphone/Laptop/Tablet and other equipments with audio function. Vortex Blast can let you get rid of wire limited and enjoy music freely. Besides, this speaker also support TF card.

Packaging includes:

1. Vortex Blast IPX6 portable speaker
2. Type C charging Cable
3. Aux Cable
4. User Manual
5. Lanyard

SPECIFICATIONS

1. Bluetooth Version: MVSILICON V5.3
2. Working Range: Up to 10meters
3. Dimension: 85*85*215mm
4. Speaker: 2*50mm+1*66mm
5. Loudspeaker Output: 2*5W+1*20W(total 30W)
6. Speaker frequency: 60HZ-18KHZ
7. Battery Voltage/Capacity: 7.4V 2200mAh
8. Battery Charging current: 5V 2A
9. Battery Charge Time: 2-3hours
10. Playing time: 5-6hours



VORTEX

Figure description

1. Battery level indicator
2. ON/OFF button
3. Function key: Play/Pause, Answer/Hang up, last number redialing
4. Function key: M/Bluetooth disconnecting/connecting
5. LED light indicator/bluetooth
6. Function key: Volume decrease/Previous song
7. Microphone
8. Function key: Volume increase/Next song
9. Aux input
10. Micro SD card slot
11. Type C charging port

Operation

1. Long press ON/OFF button until the LED light indicator starts flashing.
2. Active bluetooth connectivity in your device, which you want to connect with the speaker.
3. Search for a new device, choose the speaker "Vortex Blast" on the list.
4. Connect with the speaker(enter password 0000 if required).
5. When sounds with a voice message, the speaker is connected successfully.

Note: Portable speaker will connect to the last paired device automatically.

VORTEX

TWS connection

1. Activate two portable speakers.
2. Press and hold play/pause button on one of the speaker for 2 seconds until you hear a sound indicator.
3. Release the play/pause button. Connection of two speakers may take several seconds.
4. Activate bluetooth function in the device, select "Vortex Blast" speaker name from the list and pair the devices.

Press Play/Pause button for 2 seconds to disconnect TWS connection.

Functions

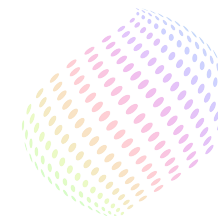
1. When playing music, short press ► for pause or play. Long press Ⓢ 3s to disconnect bluetooth connection.
2. Long press +/- for key next song or last song, short press +/- key for volume increase or decrease.
3. For incoming call, short press ► for answer/end a call, long press ► for 2s to reject an incoming call. Press ► twice to call last dialed number.
4. Short press Ⓢ key for mode change: BT-TF-AUX.
5. Press twice Ⓢ to open or close LED light when speaker turns on.

Charging

Connect charging cable to portable speaker's Type C port, white illumination flashes indicate charging status, light will be stable white when fully charged.

Tips

Turn the portable speaker off when not in use to save power or for storage. To ensure long-term performance of battery, please avoid using product under high temperature, and do not use portable speaker when charging.



VORTEX

This device complies with part 15 of the FCC Rules. Operation is subject to the following two conditions: (1) this device may not cause harmful interference, and (2) this device must accept any interference received, including interference that may cause undesired operation.

Any changes or modifications not expressly approved by the party responsible for compliance could void the user's authority to operate the equipment.

NOTE: This equipment has been tested and found to comply with the limits for a Class B digital device, pursuant to Part 15 of the FCC Rules. These limits are designed to provide reasonable protection against harmful interference in a residential installation. This equipment generates, uses and can radiate radio frequency energy and, if not installed and used in accordance with the instructions, may cause harmful interference to radio communications.

However, there is no guarantee that interference will not occur in a particular installation.

If this equipment does cause harmful interference to radio or television reception, which can be determined by turning the equipment off and on, the user is encouraged to try to correct the interference by one or more of the following measures:

- Reorient or relocate the receiving antenna.
- Increase the separation between the equipment and receiver.
- Connect the equipment into an outlet on a circuit different from that to which the receiver is connected.
- Consult the dealer or an experienced radio/TV technician for help.

The device has been evaluated to meet general RF exposure requirement. The device can be used in portable exposure condition without restriction