



REPORT No.: SZ22100184S01

Annex D Plots of Maximum SAR Test Results

GSM850_GPRS(4 TX slots)_Right Cheek_Ch189

Communication System: UID 0, GSM850(class 12) (0); Frequency: 836.4 MHz; Duty Cycle: 1:2.08
Medium: HSL_900 Medium parameters used: $f = 836.4$ MHz; $\sigma = 0.958$ S/m; $\epsilon_r = 40.843$; $\rho = 1000$ kg/m³

Ambient Temperature : 23.2 °C; Liquid Temperature : 22.3 °C

DASY5 Configuration:

- Probe: EX3DV4 - SN7608; ConvF(9.81, 9.81, 9.81) @ 836.4 MHz; Calibrated: 2022.01.12
- Sensor-Surface: 2mm (Mechanical Surface Detection)
- Electronics: DAE4 Sn1643; Calibrated: 2021.12.30
- Phantom: Twin-SAM; Type: QD 000 P41 Ax; Serial: 2020
- Measurement SW: DASY52, Version 52.10 (4); SEMCAD X Version 14.6.14 (7483)

Ch189/Area Scan (71x101x1): Interpolated grid: dx=1.500 mm, dy=1.500 mm

Maximum value of SAR (interpolated) = 0.363 W/kg

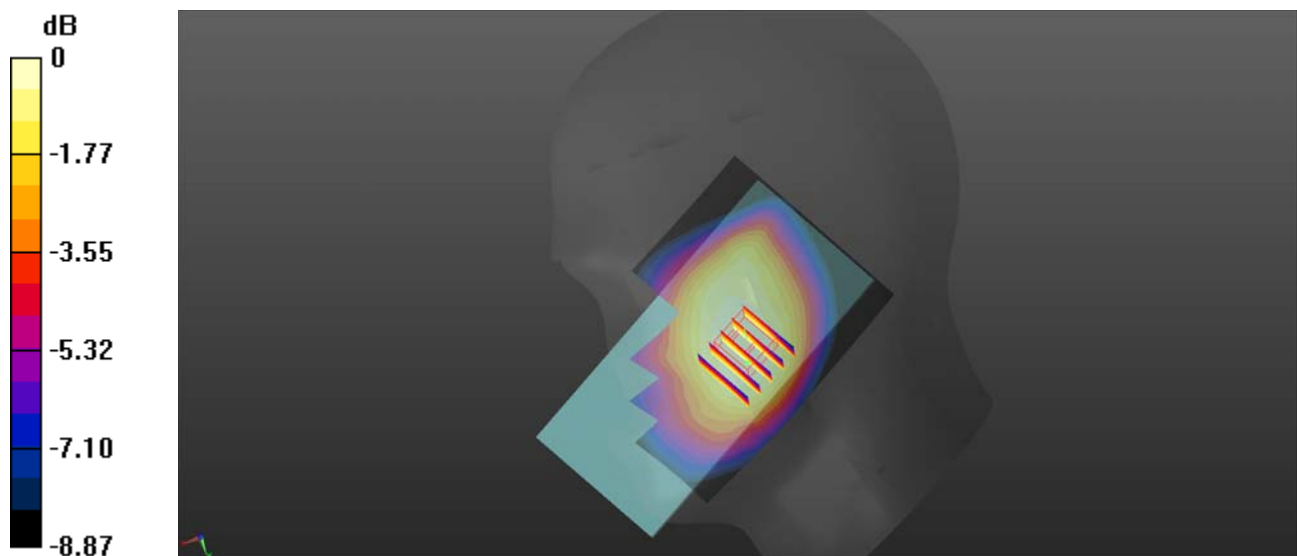
Ch189/Zoom Scan (5x5x7)/Cube 0: Measurement grid: dx=8mm, dy=8mm, dz=5mm

Reference Value = 6.517 V/m; Power Drift = 0.02 dB

Peak SAR (extrapolated) = 0.386 W/kg

SAR(1 g) = 0.322 W/kg; SAR(10 g) = 0.255 W/kg

Maximum value of SAR (measured) = 0.357 W/kg



0 dB = 0.357 W/kg

GSM1900_GPRS(4 TX slots)_Right Cheek_Ch661

Communication System: UID 0, GSM1900(class 12) (0); Frequency: 1880 MHz; Duty Cycle: 1:2.08
Medium: HSL_2000 Medium parameters used: $f = 1880$ MHz; $\sigma = 1.498$ S/m; $\epsilon_r = 40.829$; $\rho = 1000$ kg/m³

Ambient Temperature : 23.2 °C; Liquid Temperature : 22.1 °C

DASY5 Configuration:

- Probe: EX3DV4 - SN7608; ConvF(7.99, 7.99, 7.99) @ 1880 MHz; Calibrated: 2022.01.12
- Sensor-Surface: 2mm (Mechanical Surface Detection)
- Electronics: DAE4 Sn1643; Calibrated: 2021.12.30
- Phantom: Twin-SAM; Type: QD 000 P41 Ax; Serial: 2020
- Measurement SW: DASY52, Version 52.10 (4); SEMCAD X Version 14.6.14 (7483)

Ch661/Area Scan (71x101x1): Interpolated grid: dx=1.500 mm, dy=1.500 mm

Maximum value of SAR (interpolated) = 0.129 W/kg

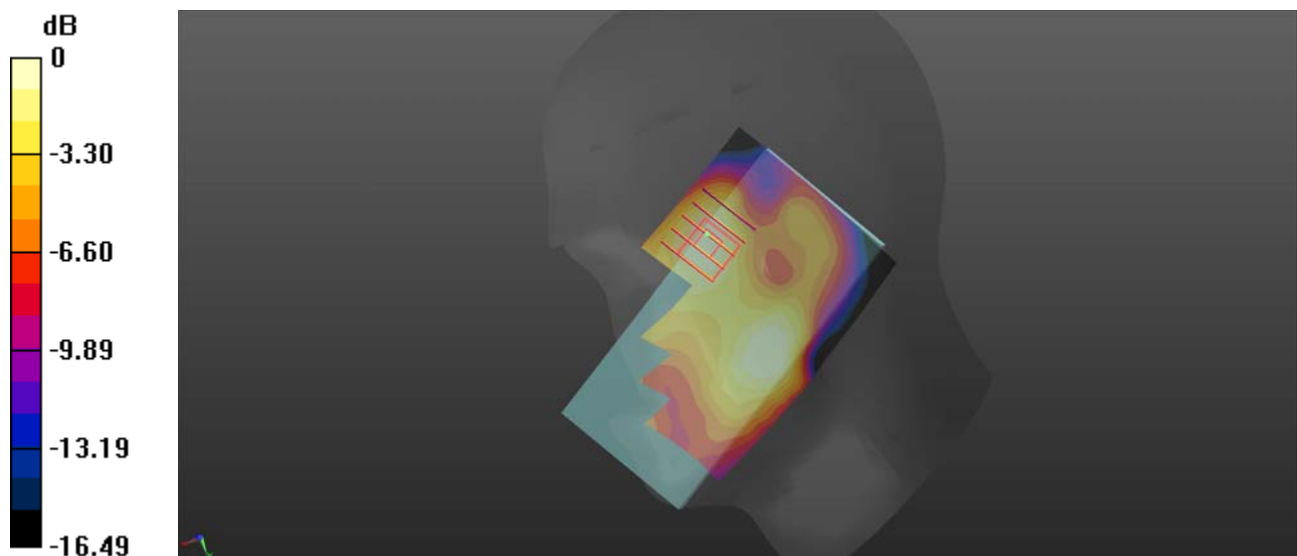
Ch661/Zoom Scan (5x5x7)/Cube 0: Measurement grid: dx=8mm, dy=8mm, dz=5mm

Reference Value = 3.732 V/m; Power Drift = 0.06 dB

Peak SAR (extrapolated) = 0.155 W/kg

SAR(1 g) = 0.097 W/kg; SAR(10 g) = 0.060 W/kg

Maximum value of SAR (measured) = 0.126 W/kg



0 dB = 0.126 W/kg

WCDMA Band II_RMC 12.2Kbps_Right Cheek_Ch9400

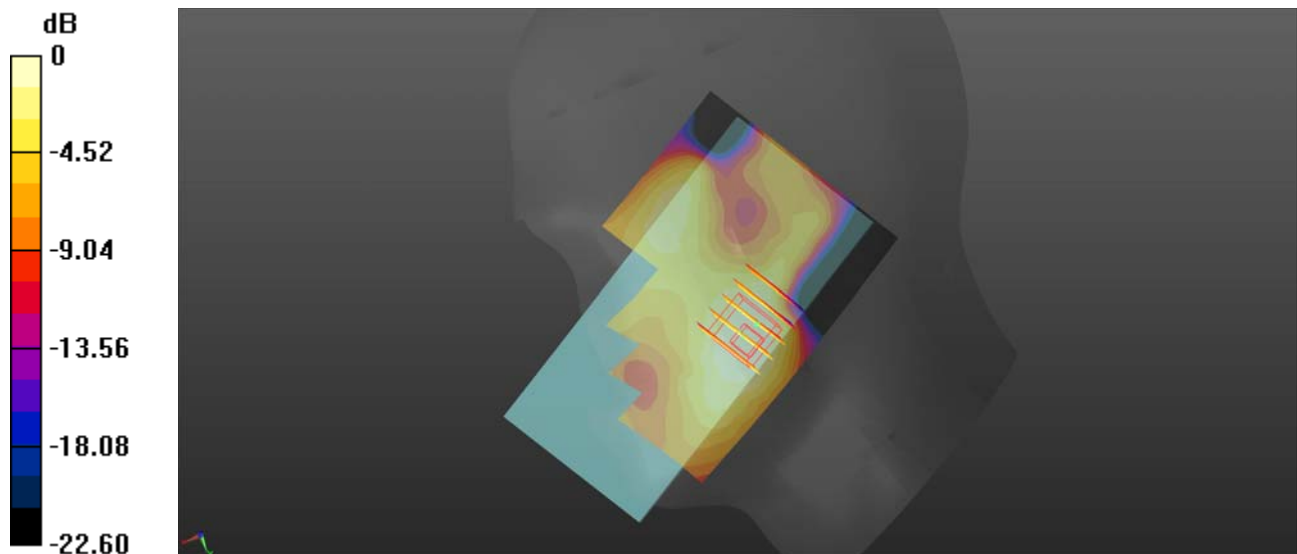
Communication System: UID 0, UMTS-FDD (0); Frequency: 1880 MHz; Duty Cycle: 1:1
Medium: HSL_2000 Medium parameters used: $f = 1880$ MHz; $\sigma = 1.321$ S/m; $\epsilon_r = 39.882$; $\rho = 1000$ kg/m³
Ambient Temperature : 23.2 °C; Liquid Temperature : 22.1 °C

DASY5 Configuration:

- Probe: EX3DV4 - SN7608; ConvF(7.99, 7.99, 7.99) @ 1880 MHz; Calibrated: 2022.01.12
- Sensor-Surface: 2mm (Mechanical Surface Detection)
- Electronics: DAE4 Sn1643; Calibrated: 2021.12.30
- Phantom: Twin-SAM; Type: QD 000 P41 Ax; Serial: 2020
- Measurement SW: DASY52, Version 52.10 (4); SEMCAD X Version 14.6.14 (7483)

Ch9400/Area Scan (71x101x1): Interpolated grid: dx=1.500 mm, dy=1.500 mm
Maximum value of SAR (interpolated) = 0.0770 W/kg

Ch9400/Zoom Scan (5x5x7)/Cube 0: Measurement grid: dx=8mm, dy=8mm, dz=5mm
Reference Value = 2.797 V/m; Power Drift = 0.03 dB
Peak SAR (extrapolated) = 0.0870 W/kg
SAR(1 g) = 0.059 W/kg; SAR(10 g) = 0.037 W/kg
Maximum value of SAR (measured) = 0.0732 W/kg



0 dB = 0.0732 W/kg

WCDMA Band IV_RMC 12.2Kbps_Right Cheek_Ch1413

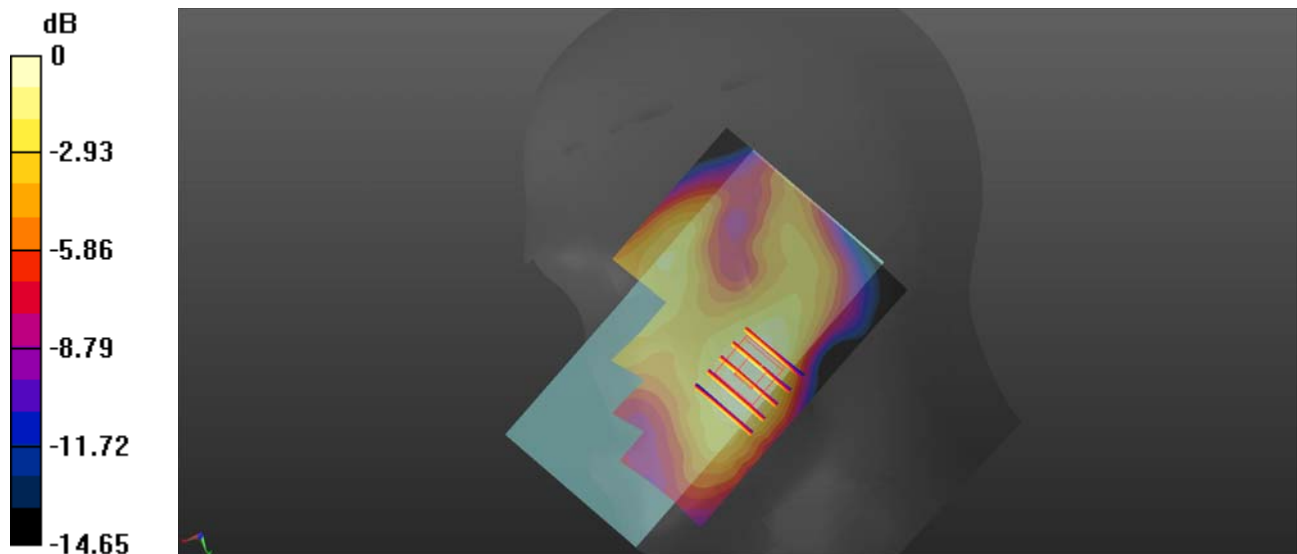
Communication System: UID 0, UMTS-FDD (0); Frequency: 1732.6 MHz; Duty Cycle: 1:1
Medium: HSL_1800 Medium parameters used: $f = 1733$ MHz; $\sigma = 1.366$ S/m; $\epsilon_r = 41.367$; $\rho = 1000$ kg/m³
Ambient Temperature : 23.2 °C; Liquid Temperature : 22.1 °C

DASY5 Configuration:

- Probe: EX3DV4 - SN7608; ConvF(8.26, 8.26, 8.26) @ 1732.6 MHz; Calibrated: 2022.01.12
- Sensor-Surface: 2mm (Mechanical Surface Detection)
- Electronics: DAE4 Sn1643; Calibrated: 2021.12.30
- Phantom: Twin-SAM; Type: QD 000 P41 Ax; Serial: 2020
- Measurement SW: DASY52, Version 52.10 (4); SEMCAD X Version 14.6.14 (7483)

Ch1413/Area Scan (71x101x1): Interpolated grid: dx=1.500 mm, dy=1.500 mm
Maximum value of SAR (interpolated) = 0.154 W/kg

Ch1413/Zoom Scan (5x5x7)/Cube 0: Measurement grid: dx=8mm, dy=8mm, dz=5mm
Reference Value = 5.362 V/m; Power Drift = 0.15 dB
Peak SAR (extrapolated) = 0.183 W/kg
SAR(1 g) = 0.126 W/kg; SAR(10 g) = 0.084 W/kg
Maximum value of SAR (measured) = 0.155 W/kg



0 dB = 0.155 W/kg

WCDMA Band V_RMC 12.2Kbps_Right Cheek_Ch4182

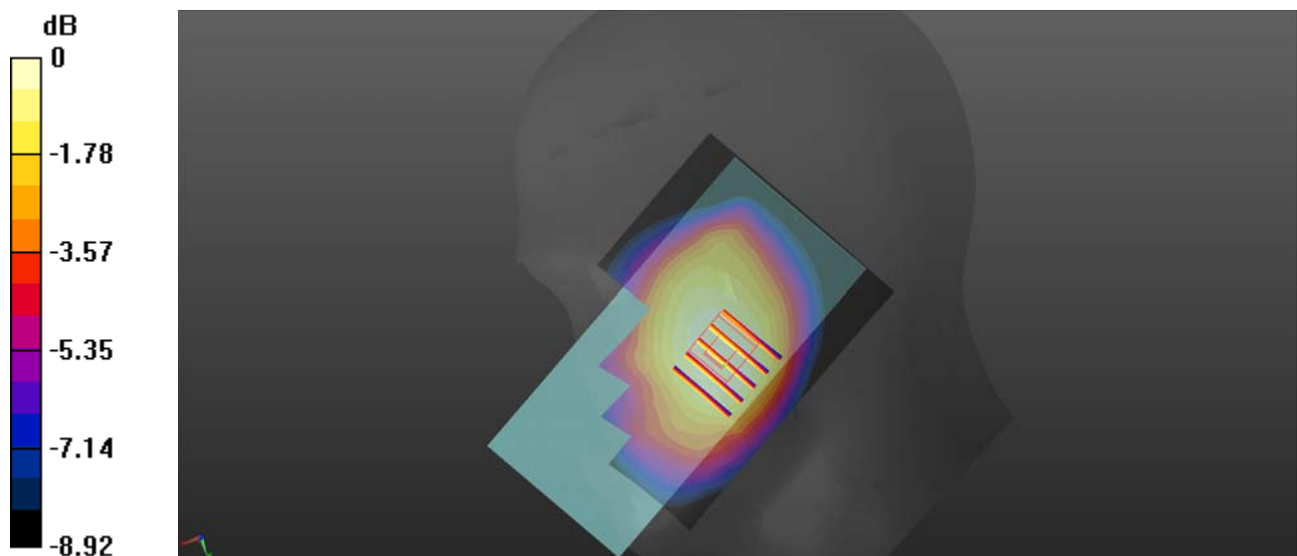
Communication System: UID 0, UMTS-FDD (0); Frequency: 836.4 MHz; Duty Cycle: 1:1
Medium: HSL_900 Medium parameters used: $f = 836.4$ MHz; $\sigma = 0.958$ S/m; $\epsilon_r = 40.843$; $\rho = 1000$ kg/m³
Ambient Temperature : 23.2 °C; Liquid Temperature : 22.3 °C

DASY5 Configuration:

- Probe: EX3DV4 - SN7608; ConvF(9.81, 9.81, 9.81) @ 836.4 MHz; Calibrated: 2022.01.12
- Sensor-Surface: 2mm (Mechanical Surface Detection)
- Electronics: DAE4 Sn1643; Calibrated: 2021.12.30
- Phantom: Twin-SAM; Type: QD 000 P41 Ax; Serial: 2020
- Measurement SW: DASY52, Version 52.10 (4); SEMCAD X Version 14.6.14 (7483)

Ch4182/Area Scan (71x101x1): Interpolated grid: dx=1.500 mm, dy=1.500 mm
Maximum value of SAR (interpolated) = 0.258 W/kg

Ch4182/Zoom Scan (5x5x7)/Cube 0: Measurement grid: dx=8mm, dy=8mm, dz=5mm
Reference Value = 4.276 V/m; Power Drift = 0.13 dB
Peak SAR (extrapolated) = 0.274 W/kg
SAR(1 g) = 0.222 W/kg; SAR(10 g) = 0.176 W/kg
Maximum value of SAR (measured) = 0.250 W/kg



0 dB = 0.250 W/kg

LTE Band 2_20MHz_QPSK_1RB_0Offset_Right Cheek_Ch18900

Communication System: UID 0, LTE (0); Frequency: 1880 MHz; Duty Cycle: 1:1

Medium: HSL_2000 Medium parameters used: $f = 1880$ MHz; $\sigma = 1.321$ S/m; $\epsilon_r = 39.882$; $\rho = 1000$ kg/m³

Ambient Temperature : 23.2 °C; Liquid Temperature : 22.1 °C

DASY5 Configuration:

- Probe: EX3DV4 - SN7608; ConvF(7.99, 7.99, 7.99) @ 1880 MHz; Calibrated: 2022.01.12
- Sensor-Surface: 2mm (Mechanical Surface Detection)
- Electronics: DAE4 Sn1643; Calibrated: 2021.12.30
- Phantom: Twin-SAM; Type: QD 000 P41 Ax; Serial: 2020
- Measurement SW: DASY52, Version 52.10 (4); SEMCAD X Version 14.6.14 (7483)

Ch18900/Area Scan (71x101x1): Interpolated grid: dx=1.500 mm, dy=1.500 mm

Maximum value of SAR (interpolated) = 0.0650 W/kg

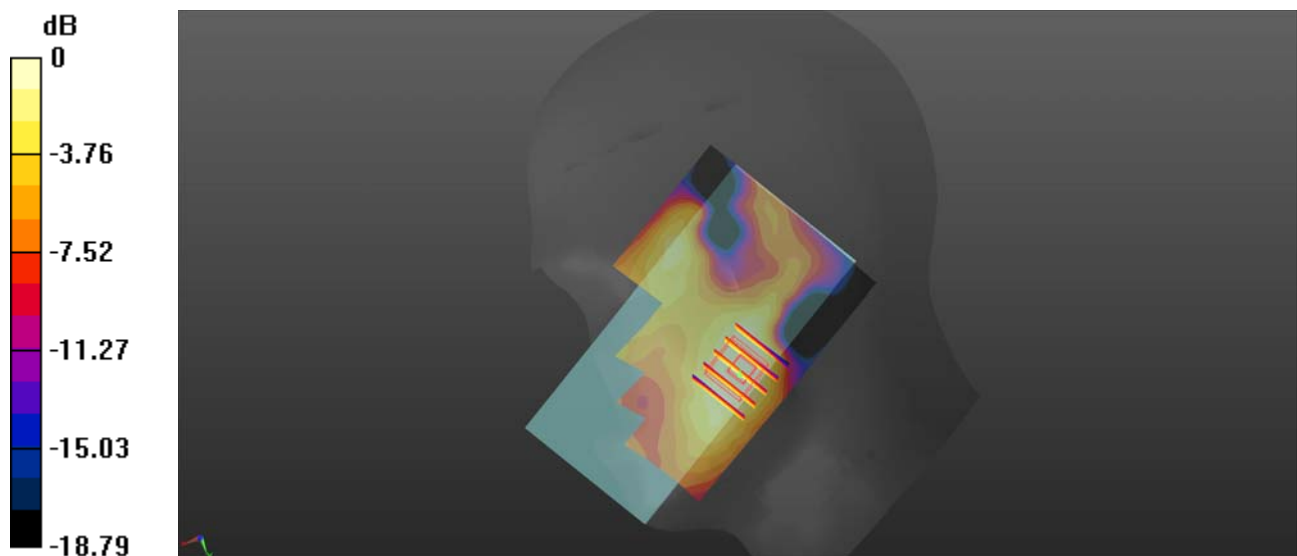
Ch18900/Zoom Scan (5x5x7)/Cube 0: Measurement grid: dx=8mm, dy=8mm, dz=5mm

Reference Value = 2.999 V/m; Power Drift = -0.19 dB

Peak SAR (extrapolated) = 0.0750 W/kg

SAR(1 g) = 0.050 W/kg; SAR(10 g) = 0.031 W/kg

Maximum value of SAR (measured) = 0.0626 W/kg



0 dB = 0.0626 W/kg

LTE Band 4_20MHz_QPSK_1RB_0Offset_Right Cheek_Ch20175

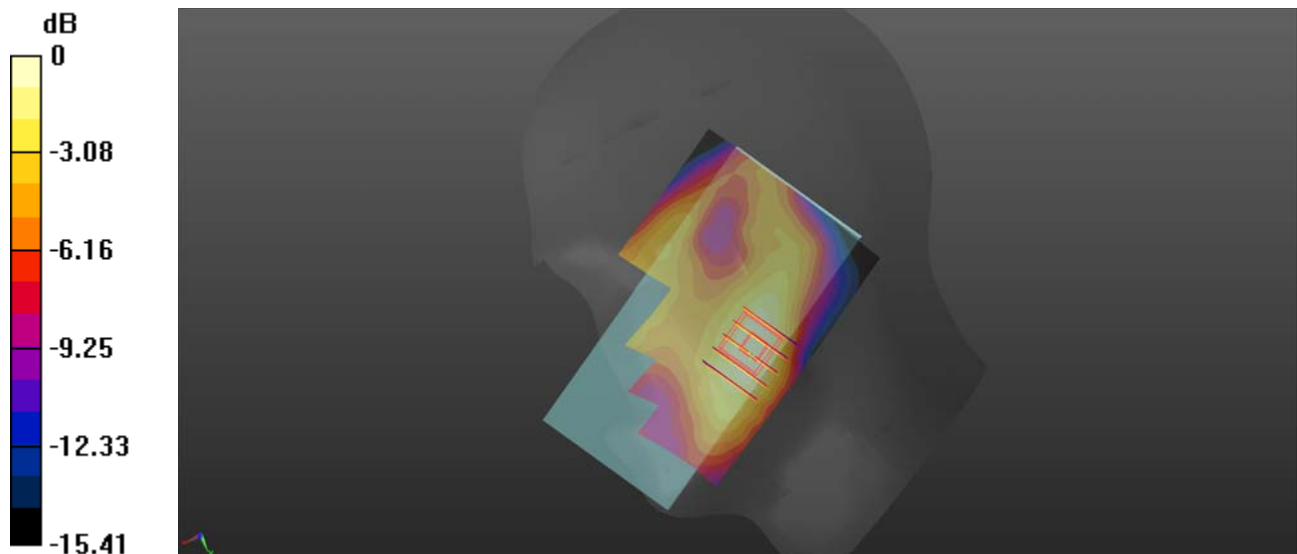
Communication System: UID 0, LTE (0); Frequency: 1732.5 MHz; Duty Cycle: 1:1
Medium: HSL_1800 Medium parameters used: $f = 1733$ MHz; $\sigma = 1.366$ S/m; $\epsilon_r = 41.367$; $\rho = 1000$ kg/m³
Ambient Temperature : 23.2 °C; Liquid Temperature : 22.1 °C

DASY5 Configuration:

- Probe: EX3DV4 - SN7608; ConvF(8.26, 8.26, 8.26) @ 1732.5 MHz; Calibrated: 2022.01.12
- Sensor-Surface: 2mm (Mechanical Surface Detection)
- Electronics: DAE4 Sn1643; Calibrated: 2021.12.30
- Phantom: Twin-SAM; Type: QD 000 P41 Ax; Serial: 2020
- Measurement SW: DASY52, Version 52.10 (4); SEMCAD X Version 14.6.14 (7483)

Ch20175/Area Scan (71x101x1): Interpolated grid: dx=1.500 mm, dy=1.500 mm
Maximum value of SAR (interpolated) = 0.165 W/kg

Ch20175/Zoom Scan (5x5x7)/Cube 0: Measurement grid: dx=8mm, dy=8mm, dz=5mm
Reference Value = 4.737 V/m; Power Drift = 0.01 dB
Peak SAR (extrapolated) = 0.198 W/kg
SAR(1 g) = 0.134 W/kg; SAR(10 g) = 0.089 W/kg
Maximum value of SAR (measured) = 0.165 W/kg



0 dB = 0.165 W/kg

LTE Band 5_10MHz_QPSK_1RB_0Offset_Right Cheek_Ch20525

Communication System: UID 0, LTE (0); Frequency: 836.5 MHz; Duty Cycle: 1:1

Medium: HSL_900 Medium parameters used: $f = 836.5$ MHz; $\sigma = 0.958$ S/m; $\epsilon_r = 40.846$; $\rho = 1000$ kg/m³

Ambient Temperature : 23.2 °C; Liquid Temperature : 22.3 °C

DASY5 Configuration:

- Probe: EX3DV4 - SN7608; ConvF(9.81, 9.81, 9.81) @ 836.5 MHz; Calibrated: 2022.01.12
- Sensor-Surface: 2mm (Mechanical Surface Detection)
- Electronics: DAE4 Sn1643; Calibrated: 2021.12.30
- Phantom: Twin-SAM; Type: QD 000 P41 Ax; Serial: 2020
- Measurement SW: DASY52, Version 52.10 (4); SEMCAD X Version 14.6.14 (7483)

Ch20525/Area Scan (71x101x1): Interpolated grid: dx=1.500 mm, dy=1.500 mm

Maximum value of SAR (interpolated) = 0.253 W/kg

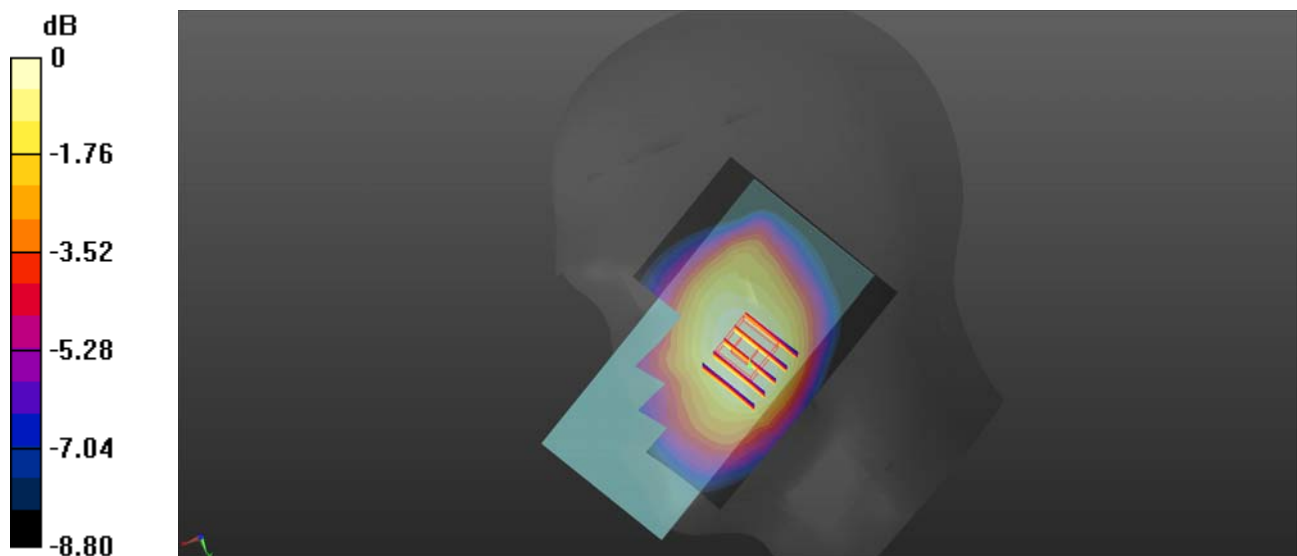
Ch20525/Zoom Scan (5x5x7)/Cube 0: Measurement grid: dx=8mm, dy=8mm, dz=5mm

Reference Value = 4.663 V/m; Power Drift = 0.05 dB

Peak SAR (extrapolated) = 0.261 W/kg

SAR(1 g) = 0.212 W/kg; SAR(10 g) = 0.167 W/kg

Maximum value of SAR (measured) = 0.238 W/kg



0 dB = 0.238 W/kg

LTE Band 12_10MHz_QPSK_1RB_0Offset_Right Cheek_Ch23095

Communication System: UID 0, LTE (0); Frequency: 707.5 MHz; Duty Cycle: 1:1

Medium: HSL_750 Medium parameters used: $f = 707.5$ MHz; $\sigma = 0.89$ S/m; $\epsilon_r = 42.162$; $\rho = 1000$ kg/m³

Ambient Temperature : 23.2 °C; Liquid Temperature : 22.3 °C

DASY5 Configuration:

- Probe: EX3DV4 - SN7608; ConvF(10.2, 10.2, 10.2) @ 707.5 MHz; Calibrated: 2022.01.12
- Sensor-Surface: 2mm (Mechanical Surface Detection)
- Electronics: DAE4 Sn1643; Calibrated: 2021.12.30
- Phantom: Twin-SAM; Type: QD 000 P41 Ax; Serial: 2020
- Measurement SW: DASY52, Version 52.10 (4); SEMCAD X Version 14.6.14 (7483)

Ch23095/Area Scan (71x101x1): Interpolated grid: dx=1.500 mm, dy=1.500 mm

Maximum value of SAR (interpolated) = 0.159 W/kg

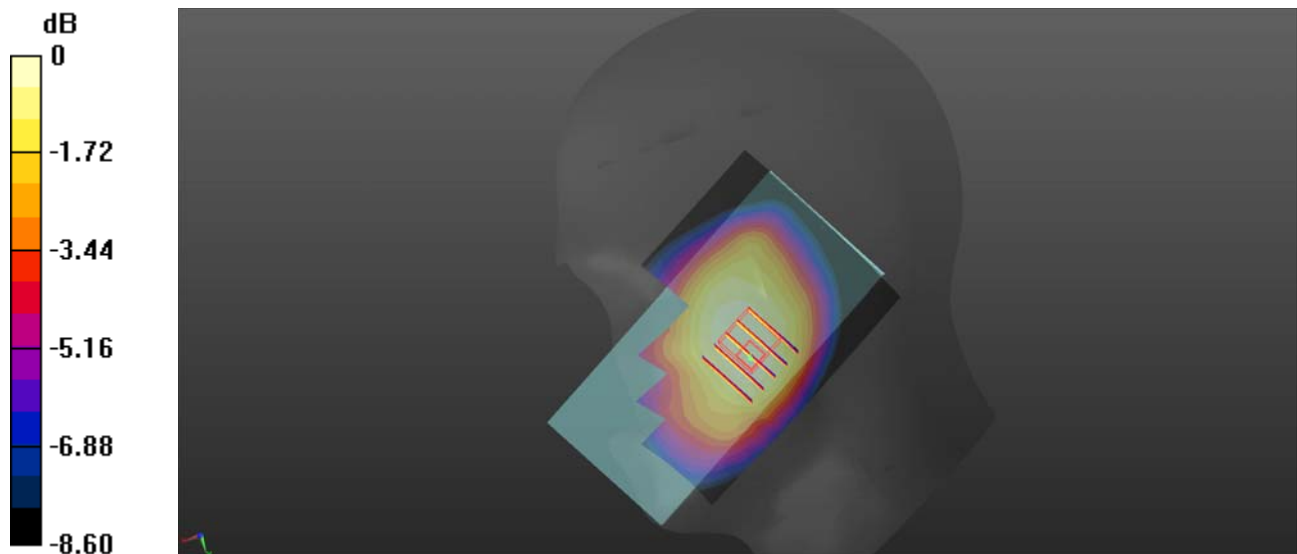
Ch23095/Zoom Scan (5x5x7)/Cube 0: Measurement grid: dx=8mm, dy=8mm, dz=5mm

Reference Value = 3.803 V/m; Power Drift = 0.02 dB

Peak SAR (extrapolated) = 0.172 W/kg

SAR(1 g) = 0.137 W/kg; SAR(10 g) = 0.108 W/kg

Maximum value of SAR (measured) = 0.159 W/kg



0 dB = 0.159 W/kg

LTE Band 66_20MHz_QPSK_1RB_0Offset_Right Cheek_Ch132322

Communication System: UID 0, LTE (0); Frequency: 1745 MHz; Duty Cycle: 1:1

Medium: HSL_1800 Medium parameters used: $f = 1745$ MHz; $\sigma = 1.382$ S/m; $\epsilon_r = 41.164$; $\rho = 1000$ kg/m³

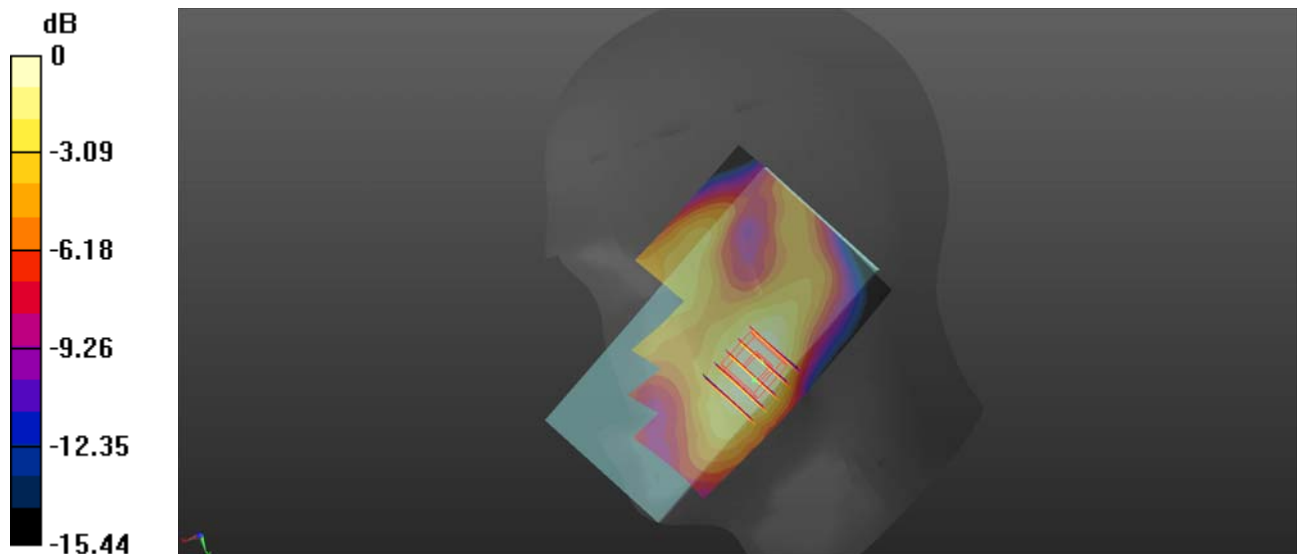
Ambient Temperature : 23.2 °C; Liquid Temperature : 22.1 °C

DASY5 Configuration:

- Probe: EX3DV4 - SN7608; ConvF(8.26, 8.26, 8.26) @ 1745 MHz; Calibrated: 2022.01.12
- Sensor-Surface: 2mm (Mechanical Surface Detection)
- Electronics: DAE4 Sn1643; Calibrated: 2021.12.30
- Phantom: Twin-SAM; Type: QD 000 P41 Ax; Serial: 2020
- Measurement SW: DASY52, Version 52.10 (4); SEMCAD X Version 14.6.14 (7483)

Ch132322/Area Scan (71x101x1): Interpolated grid: dx=1.500 mm, dy=1.500 mm
Maximum value of SAR (interpolated) = 0.180 W/kg

Ch132322/Zoom Scan (5x5x7)/Cube 0: Measurement grid: dx=8mm, dy=8mm, dz=5mm
Reference Value = 5.013 V/m; Power Drift = 0.07 dB
Peak SAR (extrapolated) = 0.209 W/kg
SAR(1 g) = 0.142 W/kg; SAR(10 g) = 0.094 W/kg
Maximum value of SAR (measured) = 0.175 W/kg



0 dB = 0.175 W/kg

WLAN 2.4GHz_802.11b 1Mbps_Left Tilt_Ch1

Communication System: UID 0, WLAN 2.4GHz 802.11b (0); Frequency: 2412 MHz; Duty Cycle: 1:1
Medium: HSL_2450 Medium parameters used: $f = 2412$ MHz; $\sigma = 1.762$ S/m; $\epsilon_r = 38.862$; $\rho = 1000$ kg/m³

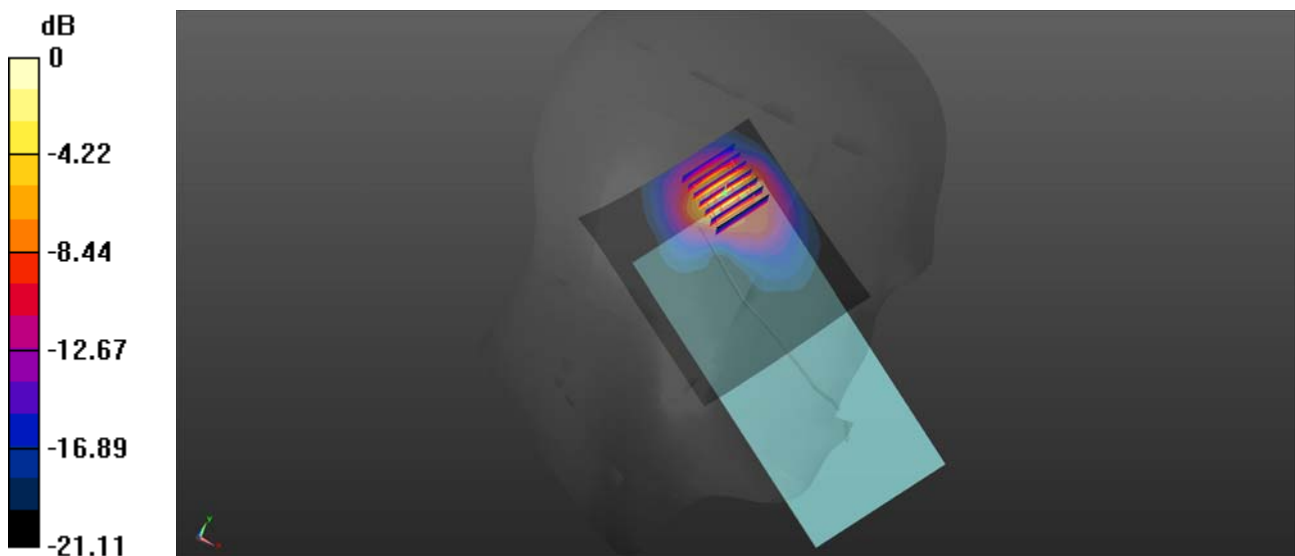
Ambient Temperature : 23.2 °C; Liquid Temperature : 22.2 °C

DASY5 Configuration:

- Probe: EX3DV4 - SN7608; ConvF(7.42, 7.42, 7.42) @ 2450 MHz; Calibrated: 2022.01.12
- Sensor-Surface: 2mm (Mechanical Surface Detection)
- Electronics: DAE4 Sn1643; Calibrated: 2021.12.30
- Phantom: Twin-SAM; Type: QD 000 P41 Ax; Serial: 2020
- Measurement SW: DASY52, Version 52.10 (4); SEMCAD X Version 14.6.14 (7483)

Ch1/Area Scan (81x91x1): Interpolated grid: dx=1.200 mm, dy=1.200 mm
Maximum value of SAR (interpolated) = 1.86 W/kg

Ch1/Zoom Scan (7x7x7)/Cube 0: Measurement grid: dx=5mm, dy=5mm, dz=5mm
Reference Value = 11.37 V/m; Power Drift = 0.09 dB
Peak SAR (extrapolated) = 2.96 W/kg
SAR(1 g) = 0.692 W/kg; SAR(10 g) = 0.187 W/kg
Maximum value of SAR (measured) = 1.88 W/kg



0 dB = 1.88 W/kg

GSM850_GPRS(4 TX slots)_Back Side_10mm_Ch189

Communication System: UID 0, GSM850(class 12) (0); Frequency: 836.4 MHz; Duty Cycle: 1:2.08
Medium: HSL_900 Medium parameters used: $f = 836.4$ MHz; $\sigma = 0.958$ S/m; $\epsilon_r = 40.843$; $\rho = 1000$ kg/m³

Ambient Temperature : 23.2 °C; Liquid Temperature : 22.3 °C

DASY5 Configuration:

- Probe: EX3DV4 - SN7608; ConvF(9.81, 9.81, 9.81) @ 836.4 MHz; Calibrated: 2022.01.12
- Sensor-Surface: 2mm (Mechanical Surface Detection)
- Electronics: DAE4 Sn1643; Calibrated: 2021.12.30
- Phantom: Twin-SAM; Type: QD 000 P41 Ax; Serial: 2020
- Measurement SW: DASY52, Version 52.10 (4); SEMCAD X Version 14.6.14 (7483)

Ch189/Area Scan (71x121x1): Interpolated grid: dx=1.500 mm, dy=1.500 mm

Maximum value of SAR (interpolated) = 0.921 W/kg

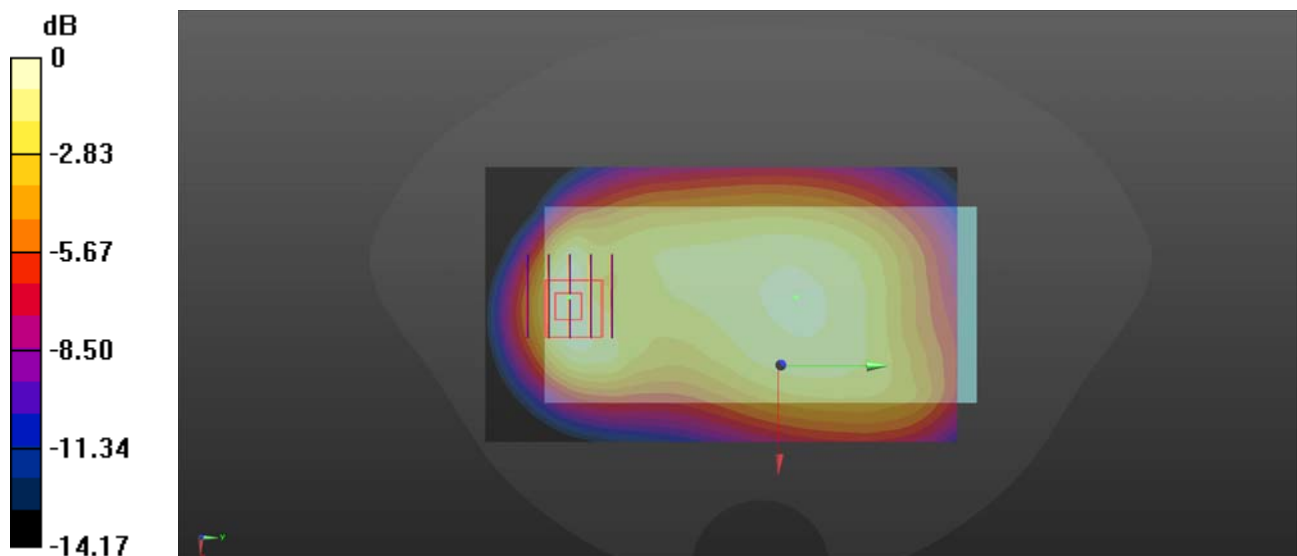
Ch189/Zoom Scan (5x5x7)/Cube 0: Measurement grid: dx=8mm, dy=8mm, dz=5mm

Reference Value = 26.87 V/m; Power Drift = -0.11 dB

Peak SAR (extrapolated) = 1.09 W/kg

SAR(1 g) = 0.645 W/kg; SAR(10 g) = 0.386 W/kg

Maximum value of SAR (measured) = 0.883 W/kg



0 dB = 0.883 W/kg

GSM1900_GPRS(4 TX slots)_Back Side_10mm_Ch661

Communication System: UID 0, GSM1900(class 12) (0); Frequency: 1880 MHz; Duty Cycle: 1:2.08
Medium: HSL_2000 Medium parameters used: $f = 1880$ MHz; $\sigma = 1.321$ S/m; $\epsilon_r = 39.882$; $\rho = 1000$ kg/m³

Ambient Temperature : 23.2 °C; Liquid Temperature : 22.1 °C

DASY5 Configuration:

- Probe: EX3DV4 - SN7608; ConvF(7.99, 7.99, 7.99) @ 1880 MHz; Calibrated: 2022.01.12
- Sensor-Surface: 2mm (Mechanical Surface Detection)
- Electronics: DAE4 Sn1643; Calibrated: 2021.12.30
- Phantom: Twin-SAM; Type: QD 000 P41 Ax; Serial: 2020
- Measurement SW: DASY52, Version 52.10 (4); SEMCAD X Version 14.6.14 (7483)

Ch661/Area Scan (71x81x1): Interpolated grid: dx=1.500 mm, dy=1.500 mm

Maximum value of SAR (interpolated) = 1.01 W/kg

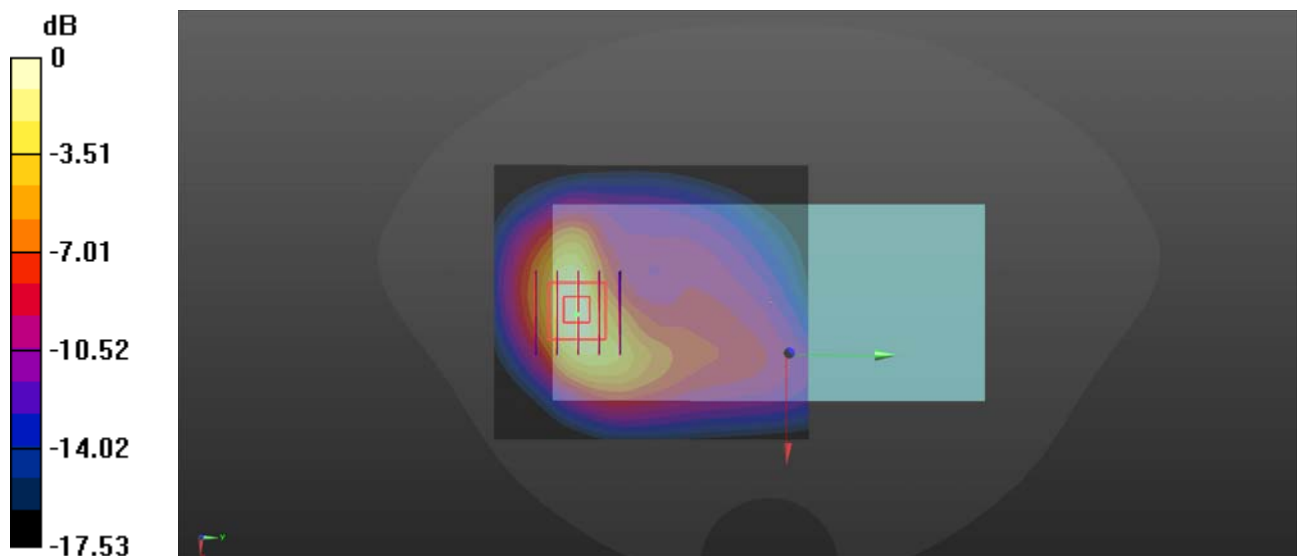
Ch661/Zoom Scan (5x5x7)/Cube 0: Measurement grid: dx=8mm, dy=8mm, dz=5mm

Reference Value = 8.024 V/m; Power Drift = 0.07 dB

Peak SAR (extrapolated) = 1.12 W/kg

SAR(1 g) = 0.612 W/kg; SAR(10 g) = 0.361 W/kg

Maximum value of SAR (measured) = 1.04 W/kg



0 dB = 1.04 W/kg

GSM1900_GPRS(4 TX slots)_Bottom Side_10mm_Ch810

Communication System: UID 0, GSM1900(class 12) (0); Frequency: 1909.8 MHz; Duty Cycle: 1:2.08
Medium: HSL_2000 Medium parameters used: $f = 1910$ MHz; $\sigma = 1.322$ S/m; $\epsilon_r = 39.646$; $\rho = 1000$ kg/m³

Ambient Temperature : 23.2 °C; Liquid Temperature : 22.1 °C

DASY5 Configuration:

- Probe: EX3DV4 - SN7608; ConvF(7.99, 7.99, 7.99) @ 1909.8 MHz; Calibrated: 2022.01.12
- Sensor-Surface: 2mm (Mechanical Surface Detection)
- Electronics: DAE4 Sn1643; Calibrated: 2021.12.30
- Phantom: Twin-SAM; Type: QD 000 P41 Ax; Serial: 2020
- Measurement SW: DASY52, Version 52.10 (4); SEMCAD X Version 14.6.14 (7483)

Ch810/Area Scan (41x81x1): Interpolated grid: dx=1.500 mm, dy=1.500 mm

Maximum value of SAR (interpolated) = 1.23 W/kg

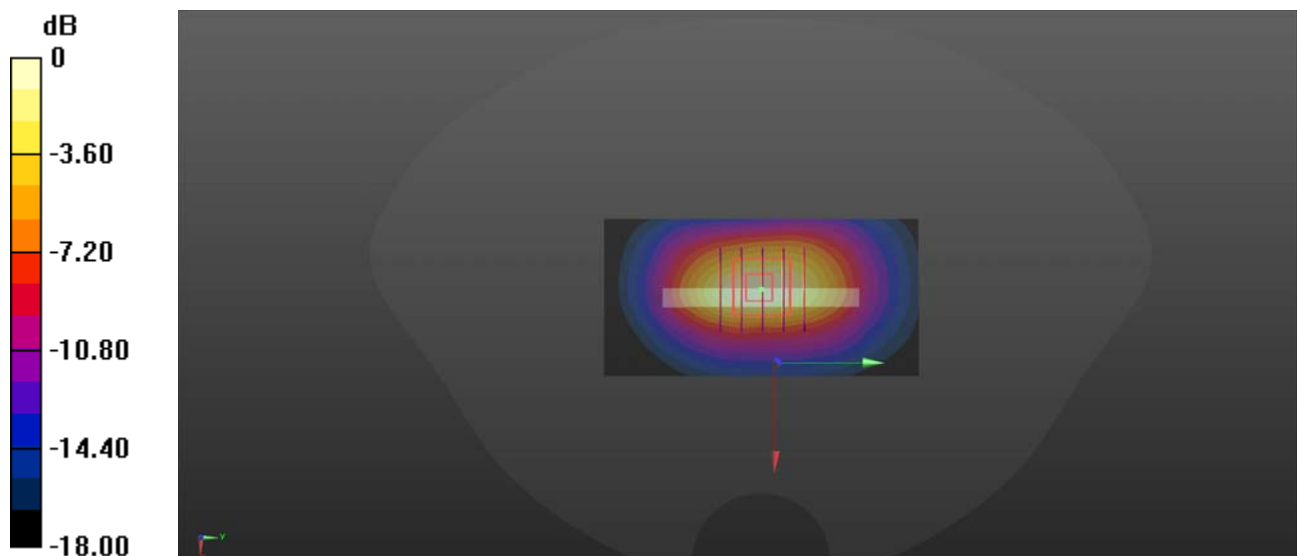
Ch810/Zoom Scan (5x5x7)/Cube 0: Measurement grid: dx=8mm, dy=8mm, dz=5mm

Reference Value = 25.10 V/m; Power Drift = -0.17 dB

Peak SAR (extrapolated) = 1.50 W/kg

SAR(1 g) = 0.873 W/kg; SAR(10 g) = 0.463 W/kg

Maximum value of SAR (measured) = 1.21 W/kg



0 dB = 1.21 W/kg

WCDMA Band II_RMC 12.2Kbps_Back Side_10mm_Ch9400

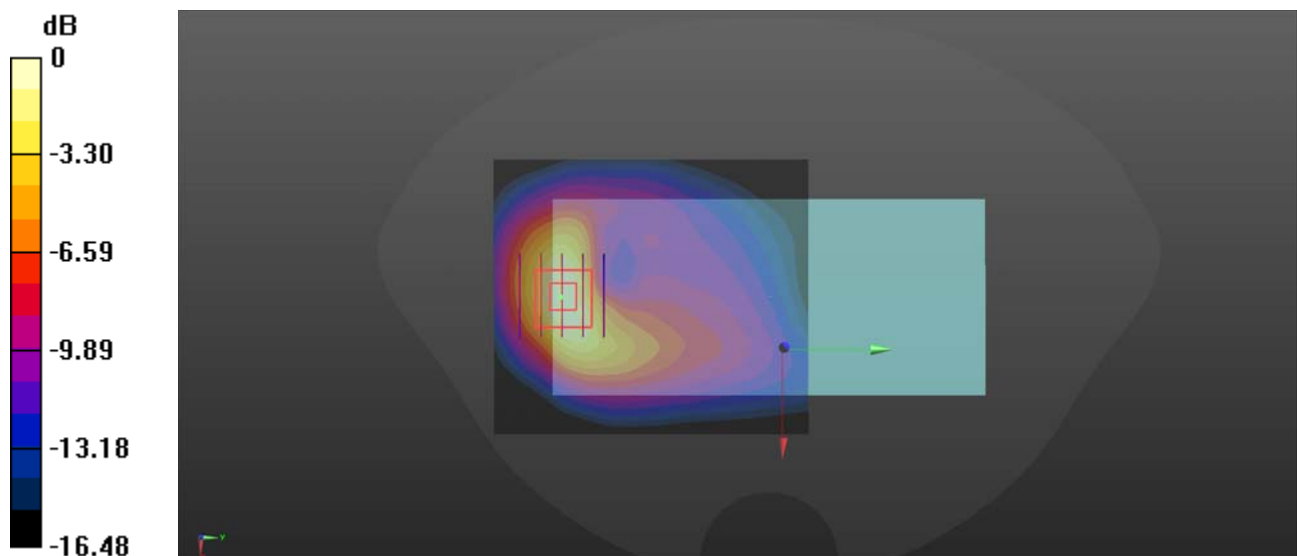
Communication System: UID 0, UMTS-FDD (0); Frequency: 1880 MHz; Duty Cycle: 1:1
Medium: HSL_2000 Medium parameters used: $f = 1880$ MHz; $\sigma = 1.321$ S/m; $\epsilon_r = 39.882$; $\rho = 1000$ kg/m³
Ambient Temperature : 23.2 °C; Liquid Temperature : 22.1 °C

DASY5 Configuration:

- Probe: EX3DV4 - SN7608; ConvF(7.99, 7.99, 7.99) @ 1880 MHz; Calibrated: 2022.01.12
- Sensor-Surface: 2mm (Mechanical Surface Detection)
- Electronics: DAE4 Sn1643; Calibrated: 2021.12.30
- Phantom: Twin-SAM; Type: QD 000 P41 Ax; Serial: 2020
- Measurement SW: DASY52, Version 52.10 (4); SEMCAD X Version 14.6.14 (7483)

Ch9400/Area Scan (71x81x1): Interpolated grid: dx=1.500 mm, dy=1.500 mm
Maximum value of SAR (interpolated) = 0.881 W/kg

Ch9400/Zoom Scan (5x5x7)/Cube 0: Measurement grid: dx=8mm, dy=8mm, dz=5mm
Reference Value = 5.672 V/m; Power Drift = 0.02 dB
Peak SAR (extrapolated) = 1.05 W/kg
SAR(1 g) = 0.627 W/kg; SAR(10 g) = 0.338 W/kg
Maximum value of SAR (measured) = 0.852 W/kg



0 dB = 0.852 W/kg

WCDMA Band II_RMC 12.2Kbps_Bottom Side_10mm_Ch9538

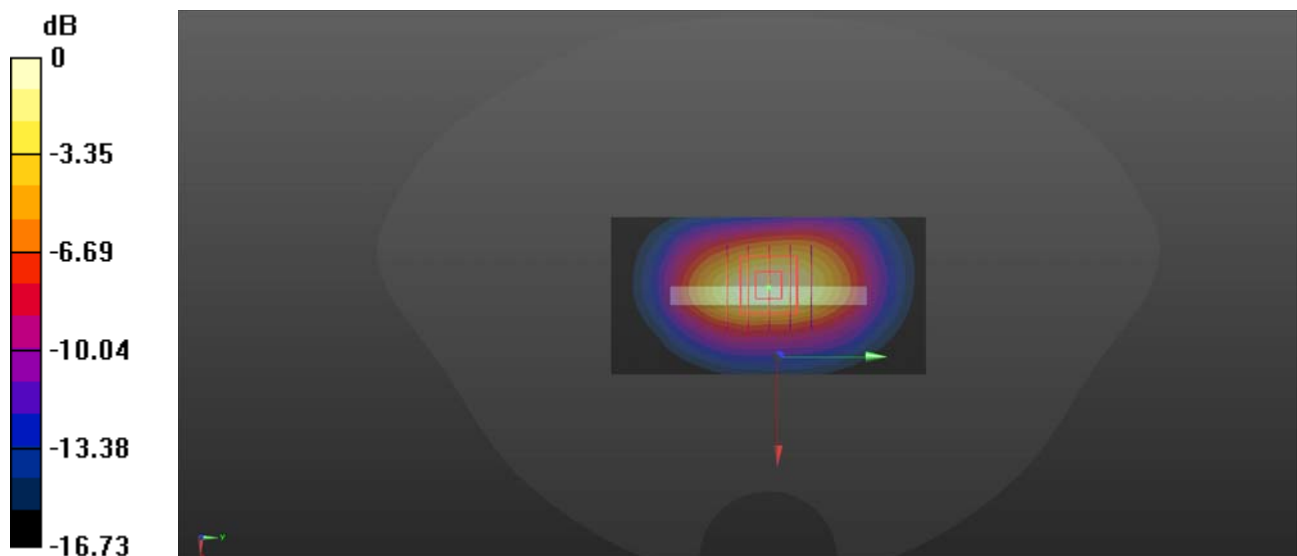
Communication System: UID 0, UMTS-FDD (0); Frequency: 1907.6 MHz; Duty Cycle: 1:1
Medium: HSL_2000 Medium parameters used: $f = 1908$ MHz; $\sigma = 1.32$ S/m; $\epsilon_r = 39.631$; $\rho = 1000$ kg/m³
Ambient Temperature : 23.2 °C; Liquid Temperature : 22.1 °C

DASY5 Configuration:

- Probe: EX3DV4 - SN7608; ConvF(7.99, 7.99, 7.99) @ 1908 MHz; Calibrated: 2022.01.12
- Sensor-Surface: 2mm (Mechanical Surface Detection)
- Electronics: DAE4 Sn1643; Calibrated: 2021.12.30
- Phantom: Twin-SAM; Type: QD 000 P41 Ax; Serial: 2020
- Measurement SW: DASY52, Version 52.10 (4); SEMCAD X Version 14.6.14 (7483)

Ch9538/Area Scan (41x81x1): Interpolated grid: dx=1.500 mm, dy=1.500 mm
Maximum value of SAR (interpolated) = 1.25 W/kg

Ch9538/Zoom Scan (5x5x7)/Cube 0: Measurement grid: dx=8mm, dy=8mm, dz=5mm
Reference Value = 26.67 V/m; Power Drift = 0.04 dB
Peak SAR (extrapolated) = 1.54 W/kg
SAR(1 g) = 0.903 W/kg; SAR(10 g) = 0.485 W/kg
Maximum value of SAR (measured) = 1.25 W/kg



0 dB = 1.25 W/kg

WCDMA Band IV_RMC 12.2Kbps_Back Side_10mm_Ch1413

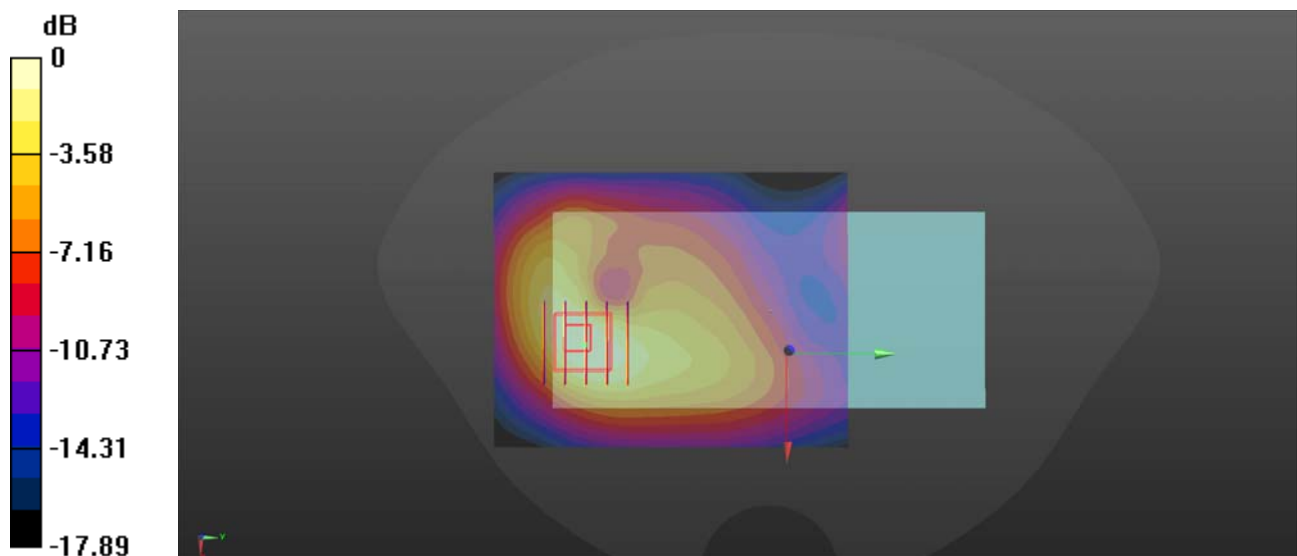
Communication System: UID 0, UMTS-FDD (0); Frequency: 1732.6 MHz; Duty Cycle: 1:1
Medium: HSL_1800 Medium parameters used: $f = 1733$ MHz; $\sigma = 1.366$ S/m; $\epsilon_r = 41.367$; $\rho = 1000$ kg/m³
Ambient Temperature : 23.2 °C; Liquid Temperature : 22.1 °C

DASY5 Configuration:

- Probe: EX3DV4 - SN7608; ConvF(8.26, 8.26, 8.26) @ 1733 MHz; Calibrated: 2022.01.12
- Sensor-Surface: 2mm (Mechanical Surface Detection)
- Electronics: DAE4 Sn1643; Calibrated: 2021.12.30
- Phantom: Twin-SAM; Type: QD 000 P41 Ax; Serial: 2020
- Measurement SW: DASY52, Version 52.10 (4); SEMCAD X Version 14.6.14 (7483)

Ch1413/Area Scan (71x91x1): Interpolated grid: dx=1.500 mm, dy=1.500 mm
Maximum value of SAR (interpolated) = 0.985 W/kg

Ch1413/Zoom Scan (5x5x7)/Cube 0: Measurement grid: dx=8mm, dy=8mm, dz=5mm
Reference Value = 7.876 V/m; Power Drift = -0.08 dB
Peak SAR (extrapolated) = 1.09 W/kg
SAR(1 g) = 0.688 W/kg; SAR(10 g) = 0.396 W/kg
Maximum value of SAR (measured) = 0.886 W/kg



0 dB = 0.886 W/kg

WCDMA Band V_RMC 12.2Kbps_Back Side_10mm_Ch4182

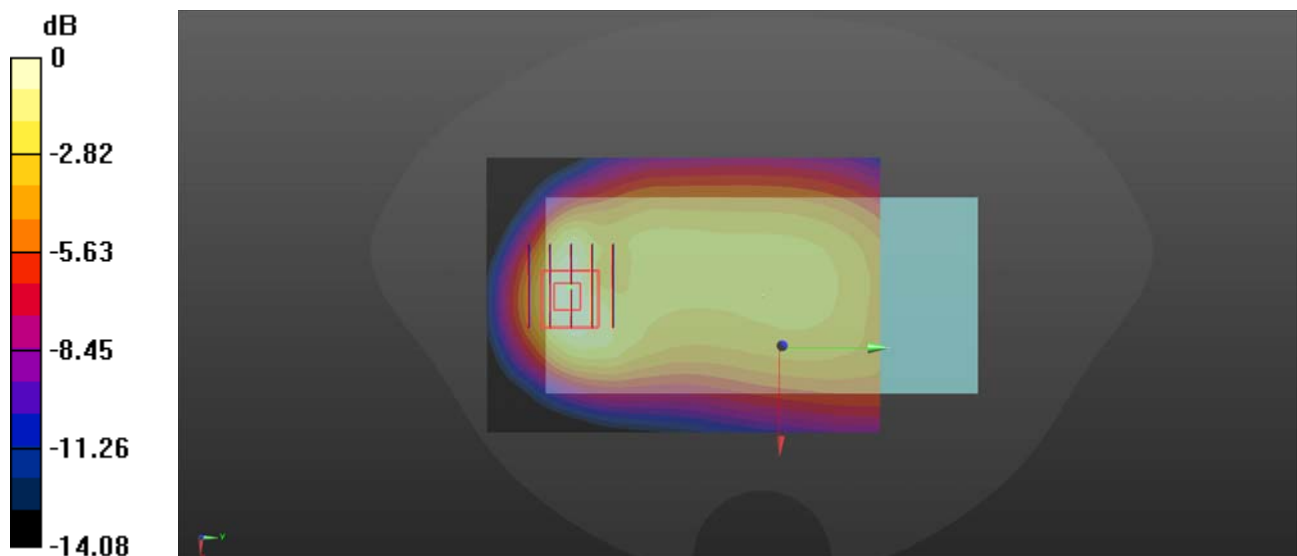
Communication System: UID 0, UMTS-FDD (0); Frequency: 836.4 MHz; Duty Cycle: 1:1
Medium: HSL_900 Medium parameters used: $f = 836.4$ MHz; $\sigma = 0.958$ S/m; $\epsilon_r = 40.843$; $\rho = 1000$ kg/m³
Ambient Temperature : 23.2 °C; Liquid Temperature : 22.3 °C

DASY5 Configuration:

- Probe: EX3DV4 - SN7608; ConvF(9.81, 9.81, 9.81) @ 836.4 MHz; Calibrated: 2022.01.12
- Sensor-Surface: 2mm (Mechanical Surface Detection)
- Electronics: DAE4 Sn1643; Calibrated: 2021.12.30
- Phantom: Twin-SAM; Type: QD 000 P41 Ax; Serial: 2020
- Measurement SW: DASY52, Version 52.10 (4); SEMCAD X Version 14.6.14 (7483)

Ch4182/Area Scan (71x101x1): Interpolated grid: dx=1.500 mm, dy=1.500 mm
Maximum value of SAR (interpolated) = 0.457 W/kg

Ch4182/Zoom Scan (5x5x7)/Cube 0: Measurement grid: dx=8mm, dy=8mm, dz=5mm
Reference Value = 15.59 V/m; Power Drift = -0.05 dB
Peak SAR (extrapolated) = 0.554 W/kg
SAR(1 g) = 0.324 W/kg; SAR(10 g) = 0.192 W/kg
Maximum value of SAR (measured) = 0.438 W/kg



0 dB = 0.438 W/kg

LTE Band 2_20MHz_QPSK_1RB_0Offset_Back Side_10mm_Ch18900

Communication System: UID 0, LTE (0); Frequency: 1880 MHz; Duty Cycle: 1:1

Medium: HSL_2000 Medium parameters used: $f = 1880$ MHz; $\sigma = 1.321$ S/m; $\epsilon_r = 39.882$; $\rho = 1000$ kg/m³

Ambient Temperature : 23.2 °C; Liquid Temperature : 22.1 °C

DASY5 Configuration:

- Probe: EX3DV4 - SN7608; ConvF(7.99, 7.99, 7.99) @ 1880 MHz; Calibrated: 2022.01.12
- Sensor-Surface: 2mm (Mechanical Surface Detection)
- Electronics: DAE4 Sn1643; Calibrated: 2021.12.30
- Phantom: Twin-SAM; Type: QD 000 P41 Ax; Serial: 2020
- Measurement SW: DASY52, Version 52.10 (4); SEMCAD X Version 14.6.14 (7483)

Ch18900/Area Scan (71x81x1): Interpolated grid: dx=1.500 mm, dy=1.500 mm

Maximum value of SAR (interpolated) = 0.747 W/kg

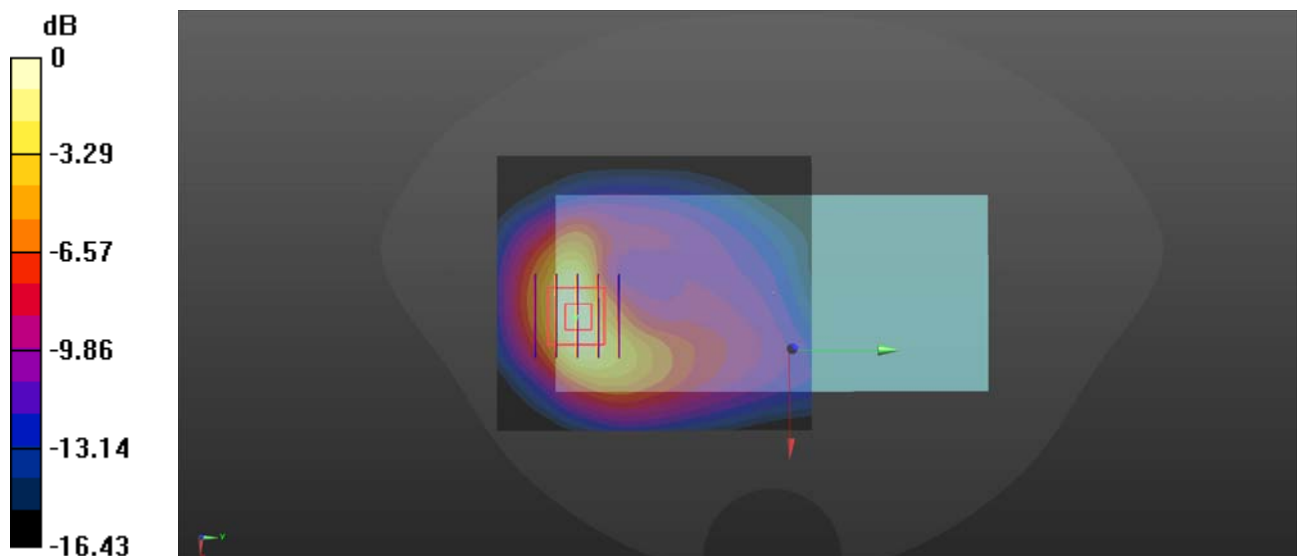
Ch18900/Zoom Scan (5x5x7)/Cube 0: Measurement grid: dx=8mm, dy=8mm, dz=5mm

Reference Value = 5.775 V/m; Power Drift = 0.08 dB

Peak SAR (extrapolated) = 0.886 W/kg

SAR(1 g) = 0.531 W/kg; SAR(10 g) = 0.286 W/kg

Maximum value of SAR (measured) = 0.723 W/kg



0 dB = 0.723 W/kg

LTE Band 2_20MHz_QPSK_1RB_0Offset_Bottom Side_10mm_Ch18900

Communication System: UID 0, LTE (0); Frequency: 1880 MHz; Duty Cycle: 1:1

Medium: HSL_2000 Medium parameters used: $f = 1880$ MHz; $\sigma = 1.321$ S/m; $\epsilon_r = 39.882$; $\rho = 1000$ kg/m³

Ambient Temperature : 23.2 °C; Liquid Temperature : 22.1 °C

DASY5 Configuration:

- Probe: EX3DV4 - SN7608; ConvF(7.99, 7.99, 7.99) @ 1880 MHz; Calibrated: 2022.01.12
- Sensor-Surface: 2mm (Mechanical Surface Detection)
- Electronics: DAE4 Sn1643; Calibrated: 2021.12.30
- Phantom: Twin-SAM; Type: QD 000 P41 Ax; Serial: 2020
- Measurement SW: DASY52, Version 52.10 (4); SEMCAD X Version 14.6.14 (7483)

Ch18900/Area Scan (41x81x1): Interpolated grid: dx=1.500 mm, dy=1.500 mm

Maximum value of SAR (interpolated) = 1.02 W/kg

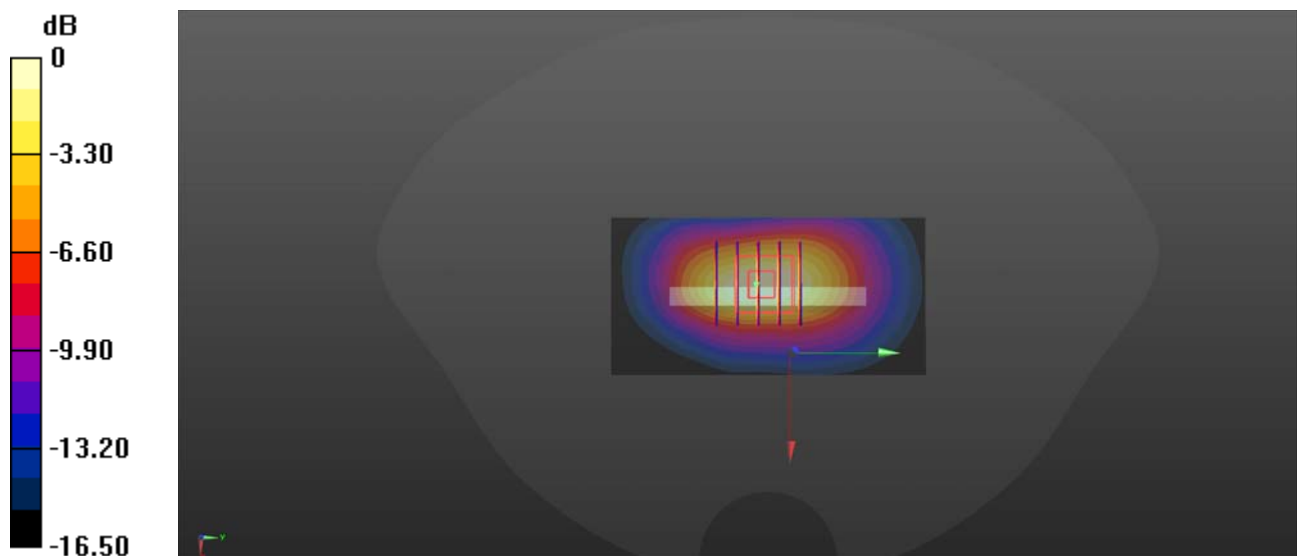
Ch18900/Zoom Scan (5x5x7)/Cube 0: Measurement grid: dx=8mm, dy=8mm, dz=5mm

Reference Value = 23.44 V/m; Power Drift = -0.09 dB

Peak SAR (extrapolated) = 1.19 W/kg

SAR(1 g) = 0.697 W/kg; SAR(10 g) = 0.375 W/kg

Maximum value of SAR (measured) = 0.959 W/kg



0 dB = 0.959 W/kg

LTE Band 4_20MHz_QPSK_1RB_0Offset_Back Side_10mm_Ch20175

Communication System: UID 0, LTE (0); Frequency: 1732.5 MHz; Duty Cycle: 1:1

Medium: HSL_1800 Medium parameters used: $f = 1733$ MHz; $\sigma = 1.366$ S/m; $\epsilon_r = 41.367$; $\rho = 1000$ kg/m³

Ambient Temperature : 23.2 °C; Liquid Temperature : 22.1 °C

DASY5 Configuration:

- Probe: EX3DV4 - SN7608; ConvF(8.26, 8.26, 8.26) @ 1733 MHz; Calibrated: 2022.01.12
- Sensor-Surface: 2mm (Mechanical Surface Detection)
- Electronics: DAE4 Sn1643; Calibrated: 2021.12.30
- Phantom: Twin-SAM; Type: QD 000 P41 Ax; Serial: 2020
- Measurement SW: DASY52, Version 52.10 (4); SEMCAD X Version 14.6.14 (7483)

Ch20175/Area Scan (71x81x1): Interpolated grid: dx=1.500 mm, dy=1.500 mm

Maximum value of SAR (interpolated) = 0.953 W/kg

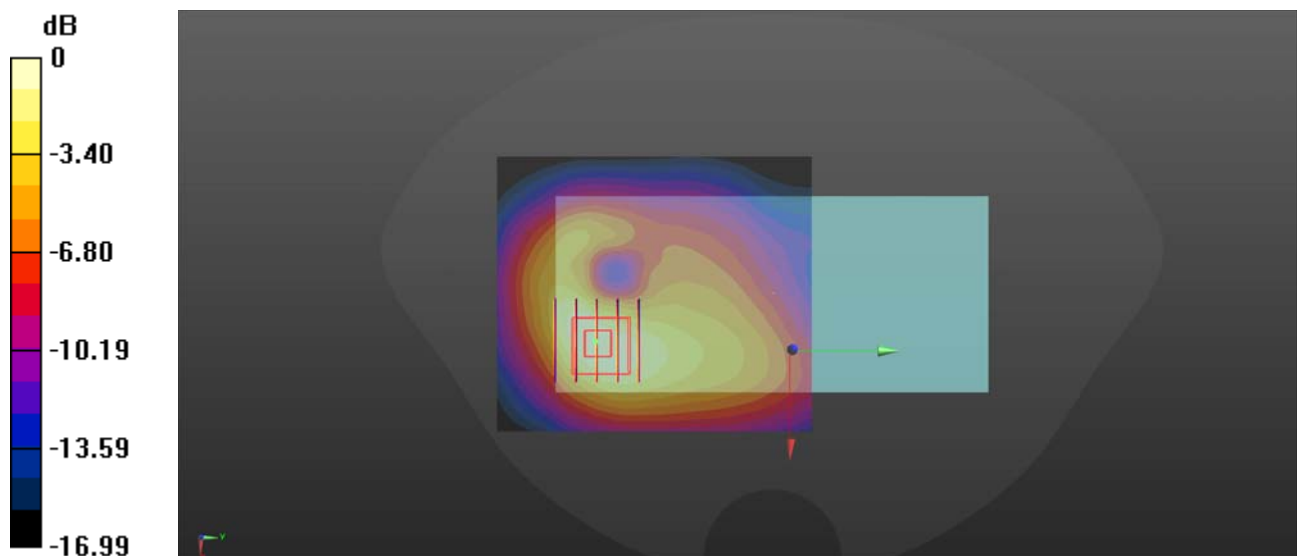
Ch20175/Zoom Scan (5x5x7)/Cube 0: Measurement grid: dx=8mm, dy=8mm, dz=5mm

Reference Value = 8.847 V/m; Power Drift = -0.05 dB

Peak SAR (extrapolated) = 1.09 W/kg

SAR(1 g) = 0.682 W/kg; SAR(10 g) = 0.397 W/kg

Maximum value of SAR (measured) = 0.900 W/kg



0 dB = 0.900 W/kg

LTE Band 5_10MHz_QPSK_1RB_0Offset_Back Side_10mm_Ch20525

Communication System: UID 0, LTE (0); Frequency: 836.5 MHz; Duty Cycle: 1:1

Medium: HSL_900 Medium parameters used: $f = 836.5$ MHz; $\sigma = 0.958$ S/m; $\epsilon_r = 40.846$; $\rho = 1000$ kg/m³

Ambient Temperature : 23.2 °C; Liquid Temperature : 22.3 °C

DASY5 Configuration:

- Probe: EX3DV4 - SN7608; ConvF(9.81, 9.81, 9.81) @ 836.5 MHz; Calibrated: 2022.01.12
- Sensor-Surface: 2mm (Mechanical Surface Detection)
- Electronics: DAE4 Sn1643; Calibrated: 2021.12.30
- Phantom: Twin-SAM; Type: QD 000 P41 Ax; Serial: 2020
- Measurement SW: DASY52, Version 52.10 (4); SEMCAD X Version 14.6.14 (7483)

Ch20525/Area Scan (71x121x1): Interpolated grid: dx=1.500 mm, dy=1.500 mm

Maximum value of SAR (interpolated) = 0.450 W/kg

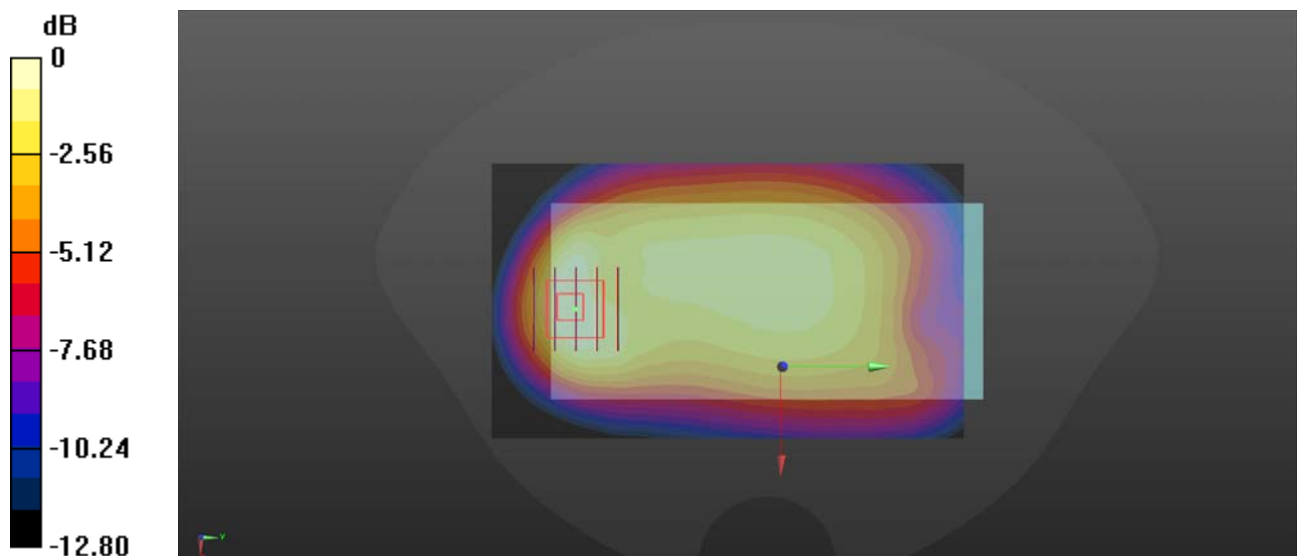
Ch20525/Zoom Scan (5x5x7)/Cube 0: Measurement grid: dx=8mm, dy=8mm, dz=5mm

Reference Value = 18.07 V/m; Power Drift = -0.07 dB

Peak SAR (extrapolated) = 0.524 W/kg

SAR(1 g) = 0.311 W/kg; SAR(10 g) = 0.187 W/kg

Maximum value of SAR (measured) = 0.413 W/kg



0 dB = 0.413 W/kg

LTE Band 12_10MHz_QPSK_1RB_0Offset_Back Side_10mm_Ch23095

Communication System: UID 0, LTE (0); Frequency: 707.5 MHz; Duty Cycle: 1:1

Medium: HSL_750 Medium parameters used: $f = 707.5$ MHz; $\sigma = 0.89$ S/m; $\epsilon_r = 42.162$; $\rho = 1000$ kg/m³

Ambient Temperature : 23.2 °C; Liquid Temperature : 22.3 °C

DASY5 Configuration:

- Probe: EX3DV4 - SN7608; ConvF(10.2, 10.2, 10.2) @ 707.5 MHz; Calibrated: 2022.01.12
- Sensor-Surface: 2mm (Mechanical Surface Detection)
- Electronics: DAE4 Sn1643; Calibrated: 2021.12.30
- Phantom: Twin-SAM; Type: QD 000 P41 Ax; Serial: 2020
- Measurement SW: DASY52, Version 52.10 (4); SEMCAD X Version 14.6.14 (7483)

Ch23095/Area Scan (71x121x1): Interpolated grid: dx=1.500 mm, dy=1.500 mm

Maximum value of SAR (interpolated) = 0.447 W/kg

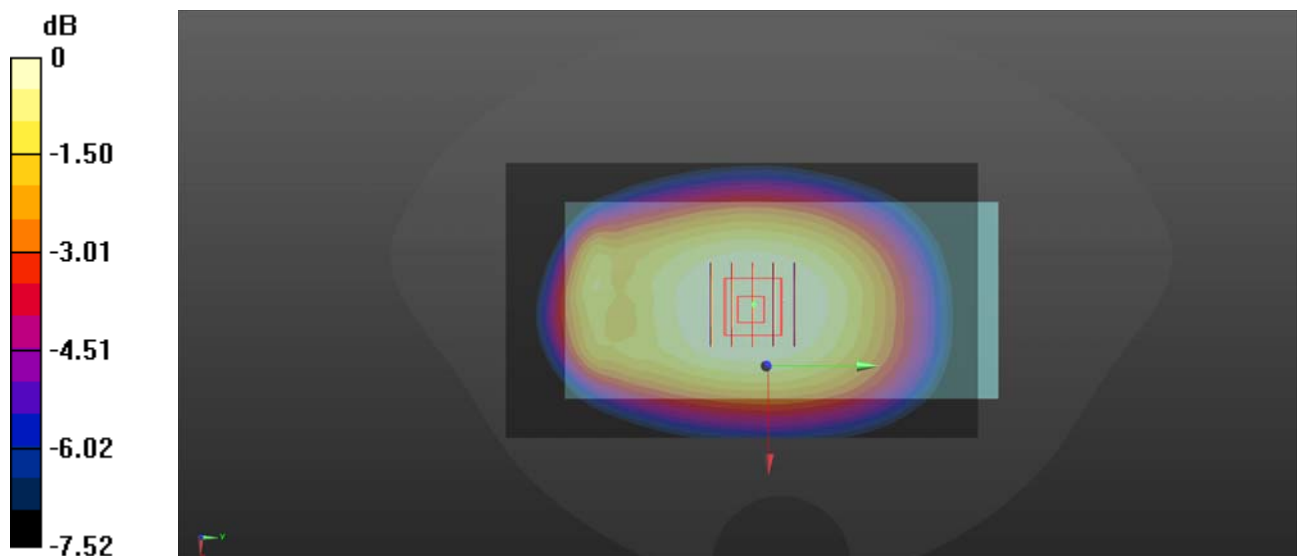
Ch23095/Zoom Scan (5x5x7)/Cube 0: Measurement grid: dx=8mm, dy=8mm, dz=5mm

Reference Value = 20.95 V/m; Power Drift = -0.17 dB

Peak SAR (extrapolated) = 0.469 W/kg

SAR(1 g) = 0.362 W/kg; SAR(10 g) = 0.278 W/kg

Maximum value of SAR (measured) = 0.418 W/kg



0 dB = 0.418 W/kg

LTE Band 66_20MHz_QPSK_1RB_0Offset_Back Side_10mm_Ch132572

Communication System: UID 0, LTE (0); Frequency: 1770 MHz; Duty Cycle: 1:1

Medium: HSL_1800 Medium parameters used: $f = 1770$ MHz; $\sigma = 1.413$ S/m; $\epsilon_r = 41.194$; $\rho = 1000$ kg/m³

Ambient Temperature : 23.2 °C; Liquid Temperature : 22.1 °C

DASY5 Configuration:

- Probe: EX3DV4 - SN7608; ConvF(8.26, 8.26, 8.26) @ 1770 MHz; Calibrated: 2022.01.12
- Sensor-Surface: 2mm (Mechanical Surface Detection)
- Electronics: DAE4 Sn1643; Calibrated: 2021.12.30
- Phantom: Twin-SAM; Type: QD 000 P41 Ax; Serial: 2020
- Measurement SW: DASY52, Version 52.10 (4); SEMCAD X Version 14.6.14 (7483)

Ch132572/Area Scan (71x81x1): Interpolated grid: dx=1.500 mm, dy=1.500 mm

Maximum value of SAR (interpolated) = 1.07 W/kg

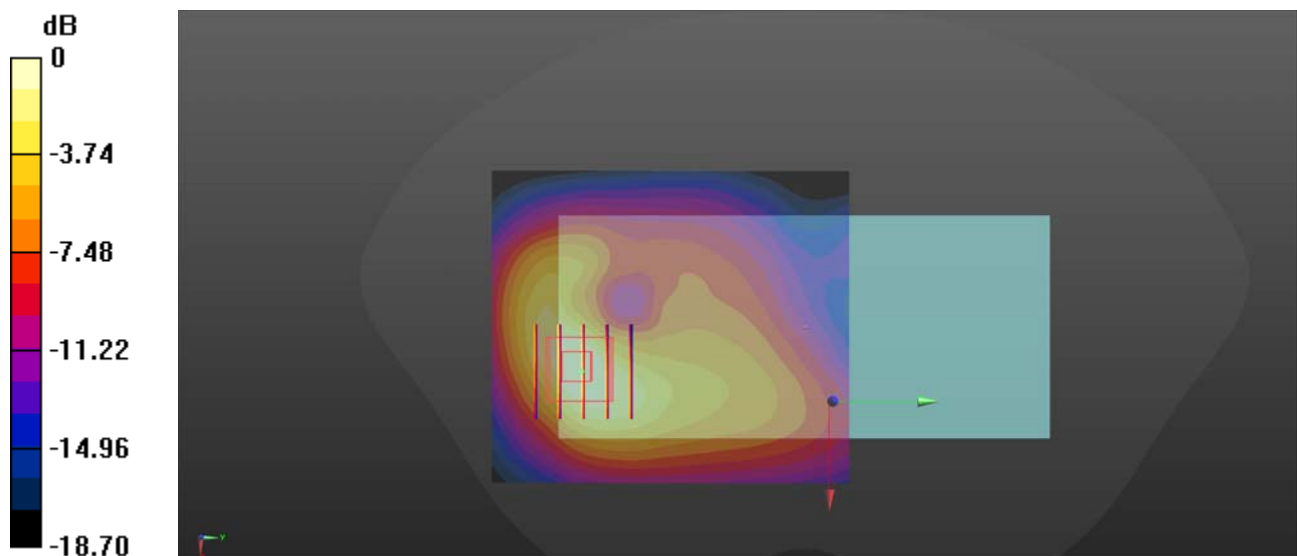
Ch132572/Zoom Scan (5x5x7)/Cube 0: Measurement grid: dx=8mm, dy=8mm, dz=5mm

Reference Value = 7.047 V/m; Power Drift = 0.12 dB

Peak SAR (extrapolated) = 1.22 W/kg

SAR(1 g) = 0.745 W/kg; SAR(10 g) = 0.416 W/kg

Maximum value of SAR (measured) = 0.997 W/kg



0 dB = 0.997 W/kg

LTE Band 66_20MHz_QPSK_1RB_0Offset_Bottom Side_10mm_Ch132572

Communication System: UID 0, LTE (0); Frequency: 1770 MHz; Duty Cycle: 1:1

Medium: HSL_1800 Medium parameters used: $f = 1770$ MHz; $\sigma = 1.413$ S/m; $\epsilon_r = 41.194$; $\rho = 1000$ kg/m³

Ambient Temperature : 23.2 °C; Liquid Temperature : 22.1 °C

DASY5 Configuration:

- Probe: EX3DV4 - SN7608; ConvF(8.26, 8.26, 8.26) @ 1770 MHz; Calibrated: 2022.01.12
- Sensor-Surface: 2mm (Mechanical Surface Detection)
- Electronics: DAE4 Sn1643; Calibrated: 2021.12.30
- Phantom: Twin-SAM; Type: QD 000 P41 Ax; Serial: 2020
- Measurement SW: DASY52, Version 52.10 (4); SEMCAD X Version 14.6.14 (7483)

Ch132572/Area Scan (41x81x1): Interpolated grid: dx=1.500 mm, dy=1.500 mm

Maximum value of SAR (interpolated) = 1.26 W/kg

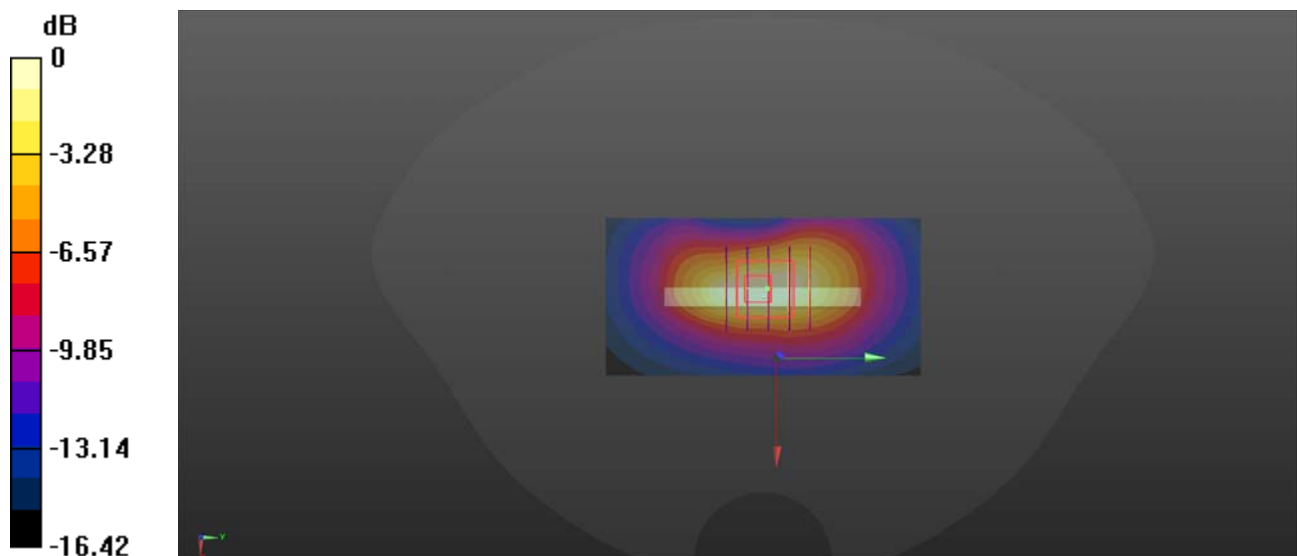
Ch132572/Zoom Scan (5x5x7)/Cube 0: Measurement grid: dx=8mm, dy=8mm, dz=5mm

Reference Value = 26.74 V/m; Power Drift = -0.15 dB

Peak SAR (extrapolated) = 1.57 W/kg

SAR(1 g) = 0.902 W/kg; SAR(10 g) = 0.489 W/kg

Maximum value of SAR (measured) = 1.25 W/kg



0 dB = 1.25 W/kg

WLAN 2.4GHz_802.11b 1Mbps_Back Side_10mm_Ch1

Communication System: UID 0, WLAN 2.4GHz 802.11b (0); Frequency: 2412 MHz; Duty Cycle: 1:1
Medium: HSL_2450 Medium parameters used: $f = 2412$ MHz; $\sigma = 1.762$ S/m; $\epsilon_r = 38.862$; $\rho = 1000$ kg/m³

Ambient Temperature : 23.2 °C; Liquid Temperature : 22.2 °C

DASY5 Configuration:

- Probe: EX3DV4 - SN7608; ConvF(7.42, 7.42, 7.42) @ 2412 MHz; Calibrated: 2022.01.12
- Sensor-Surface: 2mm (Mechanical Surface Detection)
- Electronics: DAE4 Sn1643; Calibrated: 2021.12.30
- Phantom: Twin-SAM; Type: QD 000 P41 Ax; Serial: 2020
- Measurement SW: DASY52, Version 52.10 (4); SEMCAD X Version 14.6.14 (7483)

Ch1/Area Scan (81x101x1): Interpolated grid: dx=1.200 mm, dy=1.200 mm

Maximum value of SAR (interpolated) = 0.321 W/kg

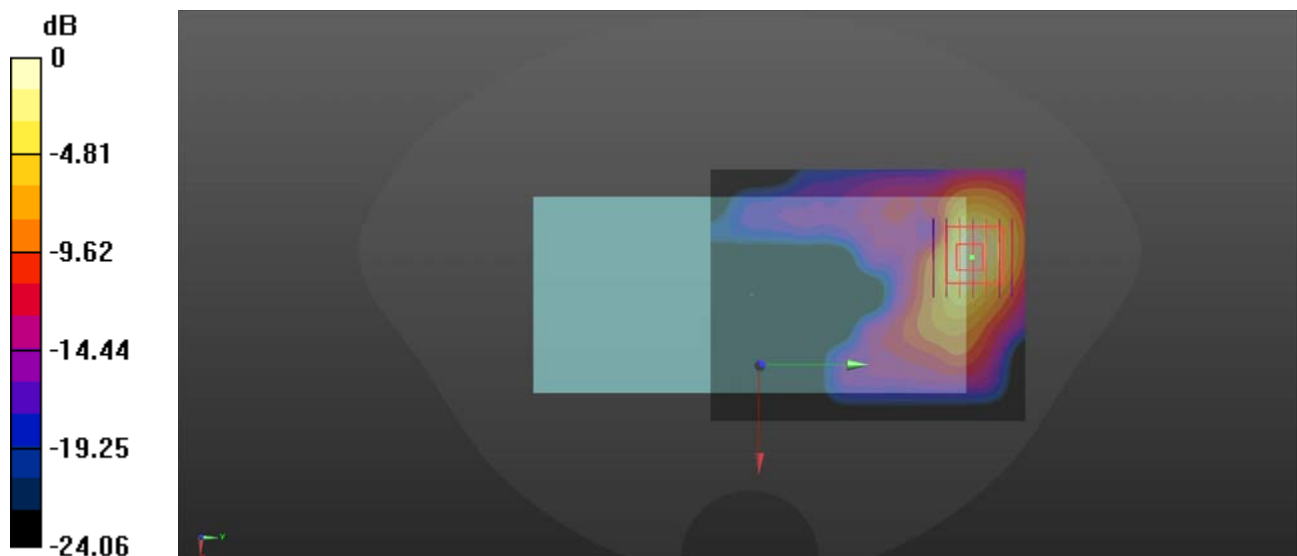
Ch1/Zoom Scan (7x7x7)/Cube 0: Measurement grid: dx=5mm, dy=5mm, dz=5mm

Reference Value = 0 V/m; Power Drift = -0.09 dB

Peak SAR (extrapolated) = 0.381 W/kg

SAR(1 g) = 0.193 W/kg; SAR(10 g) = 0.087 W/kg

Maximum value of SAR (measured) = 0.289 W/kg



0 dB = 0.289 W/kg

WLAN 2.4GHz_802.11b 1Mbps_Top Side_10mm_Ch1

Communication System: UID 0, WLAN 2.4GHz 802.11b (0); Frequency: 2412 MHz; Duty Cycle: 1:1
Medium: HSL_2450 Medium parameters used: $f = 2412$ MHz; $\sigma = 1.762$ S/m; $\epsilon_r = 38.862$; $\rho = 1000$ kg/m³

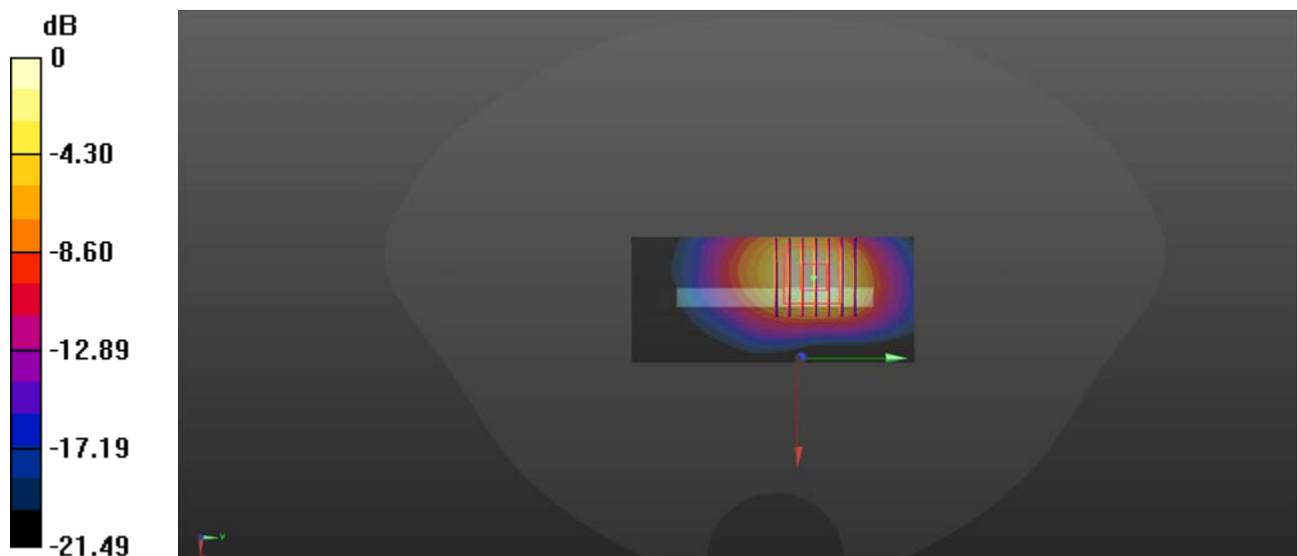
Ambient Temperature : 23.2 °C; Liquid Temperature : 22.2 °C

DASY5 Configuration:

- Probe: EX3DV4 - SN7608; ConvF(7.42, 7.42, 7.42) @ 2412 MHz; Calibrated: 2022.01.12
- Sensor-Surface: 2mm (Mechanical Surface Detection)
- Electronics: DAE4 Sn1643; Calibrated: 2021.12.30
- Phantom: Twin-SAM; Type: QD 000 P41 Ax; Serial: 2020
- Measurement SW: DASY52, Version 52.10 (4); SEMCAD X Version 14.6.14 (7483)

Ch1/Area Scan (41x91x1): Interpolated grid: dx=1.200 mm, dy=1.200 mm
Maximum value of SAR (interpolated) = 0.389 W/kg

Ch1/Zoom Scan (7x7x7)/Cube 0: Measurement grid: dx=5mm, dy=5mm, dz=5mm
Reference Value = 7.058 V/m; Power Drift = 0.13 dB
Peak SAR (extrapolated) = 0.484 W/kg
SAR(1 g) = 0.247 W/kg; SAR(10 g) = 0.116 W/kg
Maximum value of SAR (measured) = 0.370 W/kg



0 dB = 0.370 W/kg

Bluetooth_DH5_Back Side_10mm_Ch39

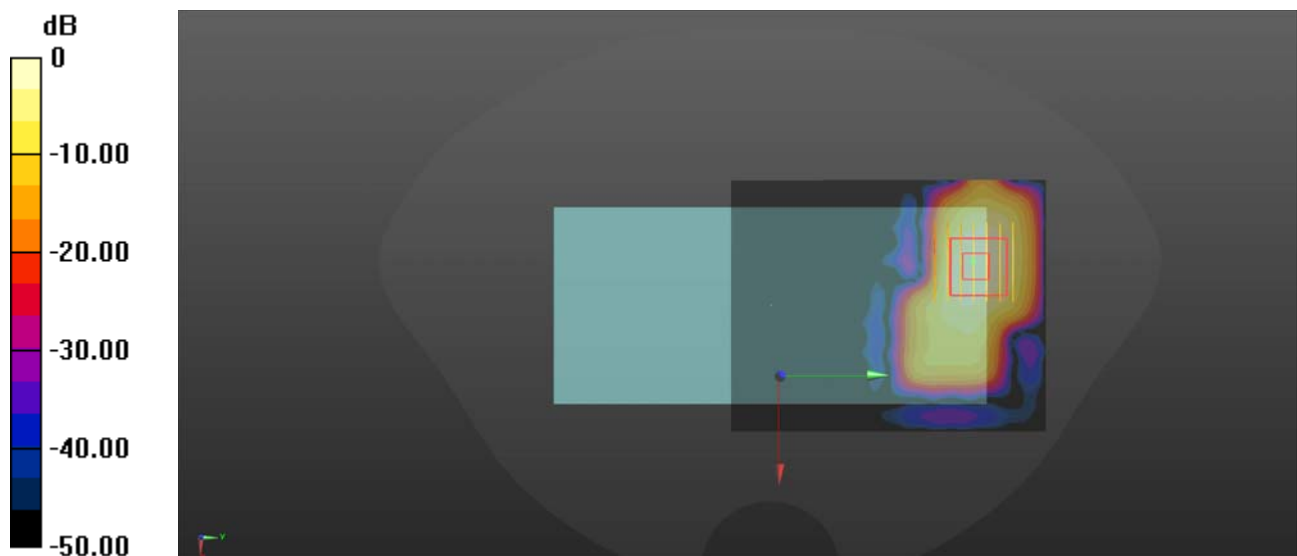
Communication System: UID 0, Bluetooth (0); Frequency: 2441 MHz; Duty Cycle: 1:1.107
Medium: HSL_2450 Medium parameters used: $f = 2441$ MHz; $\sigma = 1.807$ S/m; $\epsilon_r = 38.83$; $\rho = 1000$ kg/m³
Ambient Temperature : 23.2 °C; Liquid Temperature : 22.2 °C

DASY5 Configuration:

- Probe: EX3DV4 - SN7608; ConvF(7.42, 7.42, 7.42) @ 2441 MHz; Calibrated: 2022.01.12
- Sensor-Surface: 2mm (Mechanical Surface Detection)
- Electronics: DAE4 Sn1643; Calibrated: 2021.12.30
- Phantom: Twin-SAM; Type: QD 000 P41 Ax; Serial: 2020
- Measurement SW: DASY52, Version 52.10 (4); SEMCAD X Version 14.6.14 (7483)

Ch39/Area Scan (81x101x1): Interpolated grid: dx=1.200 mm, dy=1.200 mm
Maximum value of SAR (interpolated) = 0.0437 W/kg

Ch39/Zoom Scan (7x7x7)/Cube 0: Measurement grid: dx=5mm, dy=5mm, dz=5mm
Reference Value = 0 V/m; Power Drift = 0.02 dB
Peak SAR (extrapolated) = 0.0520 W/kg
SAR(1 g) = 0.025 W/kg; SAR(10 g) = 0.011 W/kg
Maximum value of SAR (measured) = 0.0381 W/kg



0 dB = 0.0381 W/kg

Bluetooth_DH5_Top Side_10mm_Ch39

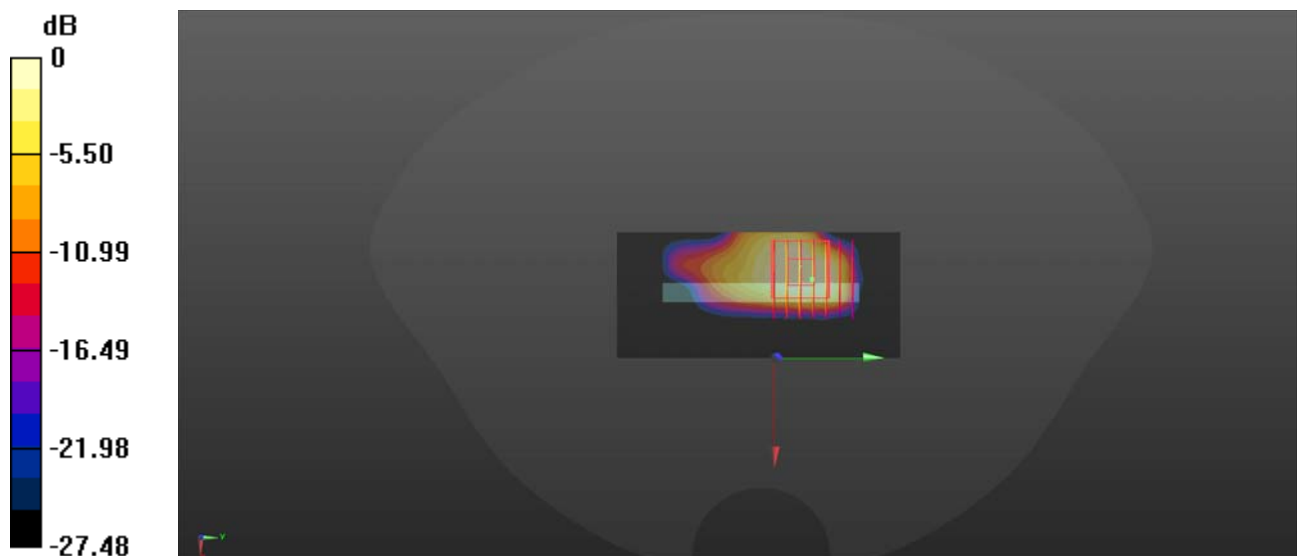
Communication System: UID 0, Bluetooth (0); Frequency: 2441 MHz; Duty Cycle: 1:1.107
Medium: HSL_2450 Medium parameters used: $f = 2441$ MHz; $\sigma = 1.807$ S/m; $\epsilon_r = 38.83$; $\rho = 1000$ kg/m³
Ambient Temperature : 23.2 °C; Liquid Temperature : 22.2 °C

DASY5 Configuration:

- Probe: EX3DV4 - SN7608; ConvF(7.42, 7.42, 7.42) @ 2441 MHz; Calibrated: 2022.01.12
- Sensor-Surface: 2mm (Mechanical Surface Detection)
- Electronics: DAE4 Sn1643; Calibrated: 2021.12.30
- Phantom: Twin-SAM; Type: QD 000 P41 Ax; Serial: 2020
- Measurement SW: DASY52, Version 52.10 (4); SEMCAD X Version 14.6.14 (7483)

Ch39/Area Scan (41x91x1): Interpolated grid: dx=1.200 mm, dy=1.200 mm
Maximum value of SAR (interpolated) = 0.0773 W/kg

Ch39/Zoom Scan (7x7x7)/Cube 0: Measurement grid: dx=5mm, dy=5mm, dz=5mm
Reference Value = 0.8020 V/m; Power Drift = 0.02 dB
Peak SAR (extrapolated) = 0.0590 W/kg
SAR(1 g) = 0.030 W/kg; SAR(10 g) = 0.014 W/kg
Maximum value of SAR (measured) = 0.0433 W/kg



0 dB = 0.0433 W/kg