



# Antenna Test report

Model Name : 6755-P30

Date: 23st Dec, 2022

Shenzhen Xinlingke Technology Co., Ltd.

[www.kpantenna.com](http://www.kpantenna.com)

诚信 · 感恩

CONTENT

- 01 Project Introduction and Photos**
- 02 Report Versions**
- 03 Introduction of Company and Test Environment**
- 04 Environment Test**
- 05 Matching Circuit**
- 06 Data of WIFI Antenna**
- 07 Antenna Location**
- 08 Conclusion**

# 01.Project Introduction and Photoes-Project Introduction



RF Engineer	Engineer Kong	Email	2532625702@qq.com
		Mobile	18477016343
Antenna Overview			
Status of Sample machine	Whole machine	Project Name	6755-P30
Antenna Type	PIFA	Structure mode	FPC+3rd Generation coaxial line
Main Antenna	2G GSM: 850/900/1800/1900MHz 3G WCDMA: 1900/850 4G LTE: B2, B3, B4, B5, B12, B66, B25, B26, B41		
Other Antenna	Diversity Three-in-one		

# 01. Project Introduction and Photos-Photos



The front



The back



## 02.Report Versions



Version	Report Time	Commissioning Overview
A0	2022.12.22	Antenna Test Report
A1		
A2		
A3		
A4		
A5		
A6		
A7		
A8		
A9		
A10		

# 03.Introduction of Company and Test Environment- Company



## Company Experience

Shenzhen Xinlingke Technology Co., Ltd. owns 12 years of experience in R & D and production of various mobile communication terminals. Company has established a joint RF device laboratory with universities. Company is proficient in antennas of 5G NSA and SA, ultra thin mobile phones, NB IOT / EMTC, and base station.



## Product Range

The products of company cover many fields, such as smart home, Internet of vehicles, smart wear, mobile phones, pad, base station etc.



## Core Task

Company has been committed to improving our long-term competitiveness by providing whole RF solution, insisted on taking customer demand as the first place.



# 04.Introduction of Company and Test Environment-Test Environment



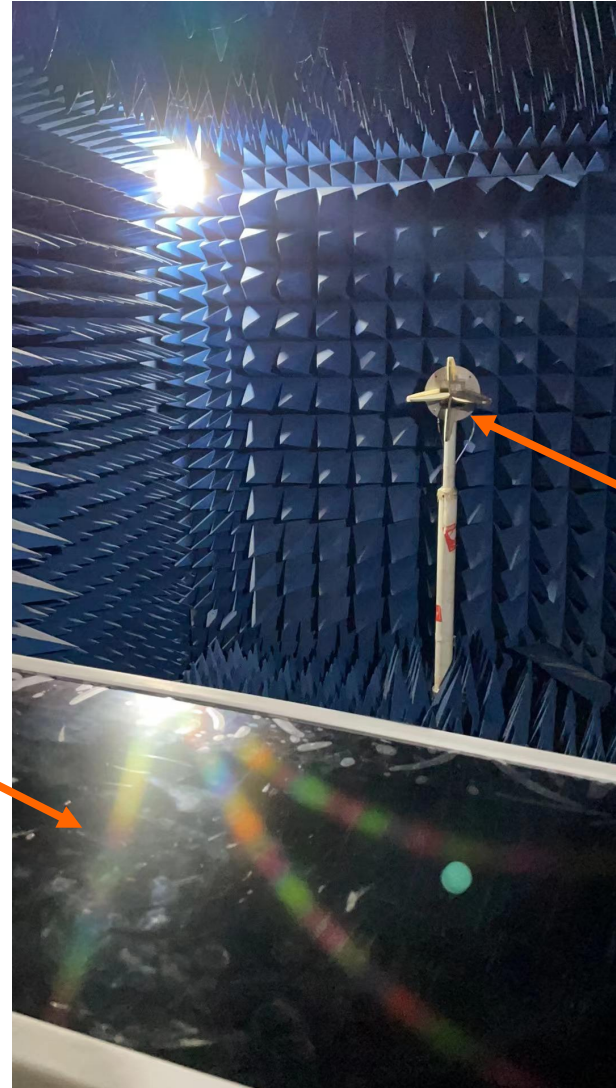
**The company owns several OTA darkrooms whose frequency bands covers from 400mhz to 8.5ghz.**

- Providing OTA test for whole machine which include but not be limited to 5G NSA, SA(trp/tis), WiFi active test (supporting 11b/11g/11n/11ax mode), bluetooth/GPS active test
- Providing antenna gain and efficiency
- Providing 2D pattern / Apple chart analysis
- Providing upper and lower hemisphere efficiency
- Providing mutual interference correlation coefficient test items.

# 05.Environment Test



Location of  
Tested  
Machine



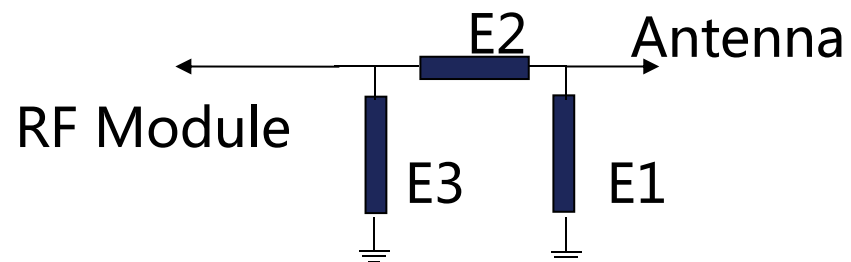
Location of  
Loudspeaker



## 06. Matching Circuit

Matching Circuit  
is not been changed

Element	Value
E1(0402)	
E2(0402)	
E3(0402)	



## 07.Data of Main Antenna



### Main antenna active data

Band	Channel	TRP	Gain
B2	L	18.79	
	M	18	
	H	18.57	1.20
B3	L	18.55	
	M	18.33	
	H	18.09	1.20
B4	L	18.26	
	M	18.04	
	H	18.03	1.20
B5	L	15.83	
	M	15.43	
	H	14.81	1.20

Band	Channel	TRP	Gain
B12	L	17.04	
	M	17.68	
	H	17.1	1.20
B25	L	18.97	
	M	18.97	
	H	18.53	1.20
B26	L	16	
	M	15.68	
	H	15.08	1.20
B41	L	15.99	
	M	15.35	
	H	15.42	1.20

## 08. Data of Main Antenna



### Main antenna active data

Band	Channel	TRP	Gain
850	L	23.51	
	M	22.95	
	H	22.19	1.10
900	L	20.54	
	M	19.56	
	H	18.67	1.10
1800	L	25.58	
	M	24.64	
	H	23.79	1.10
1900	L	23.27	
	M	24.05	
	H	24.28	1.10

Band	Channel	TRP	Gain
W2	L	16.93	
	M	17.18	
	H	17.15	1.20
W5	L	14.47	
	M	14.28	
	H	14.04	1.20

## 09. WIFI active data



### 2.4G WIFI active data

2.4GWIFI	802.11b (11M)		
channel	1	7	13
TRP	10.05	10.85	12.05
Gain			1.10

### 5G WIFI active data

5GWIFI	802.11a (54M)			
channel	36	64	149	165
TRP	5.16	5.09	7.53	7.87
Gain		0.80		0.90

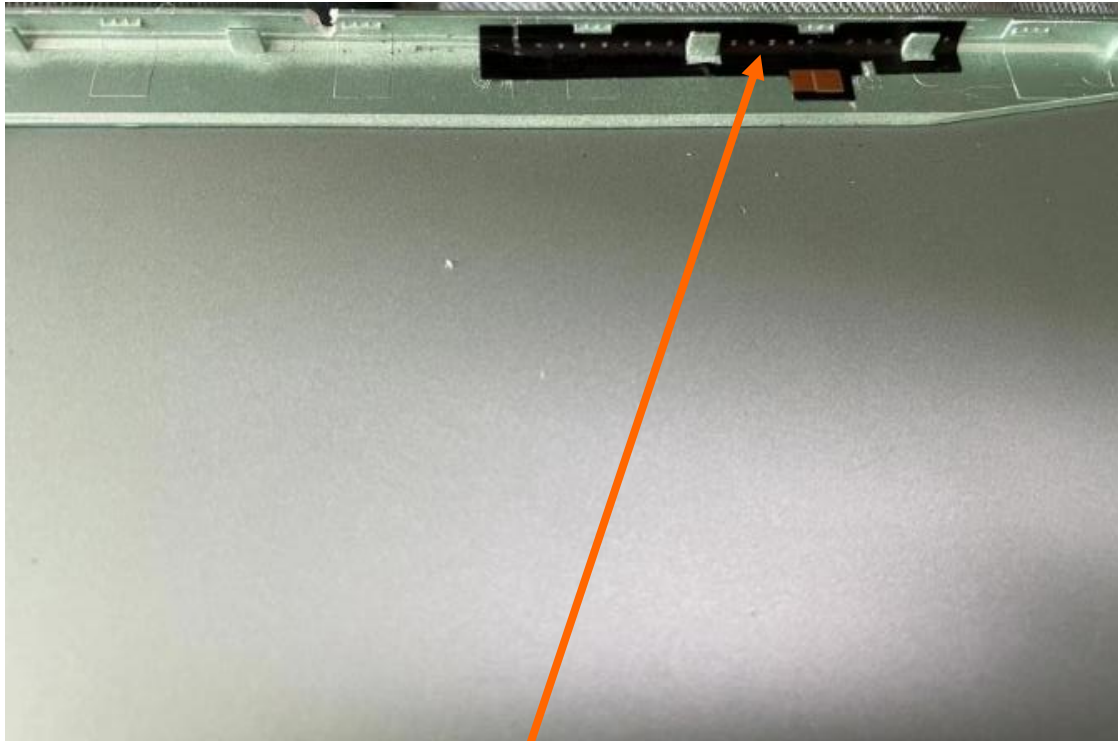


## 10. Measured data of GPS/BT

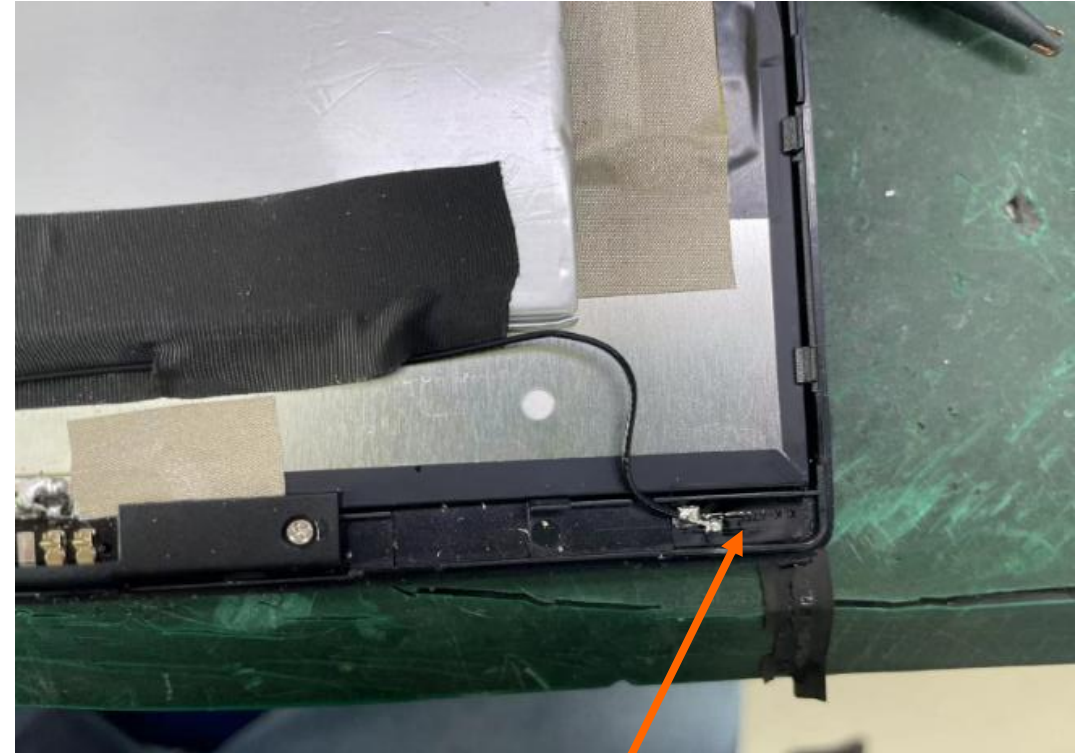


**GPS searched 1 star above 40 on the roof of the fifth floor of our company, The positioning time is 1 minute. Bluetooth no block 12 meters listening to music smoothly.**

# 11. Antenna Location

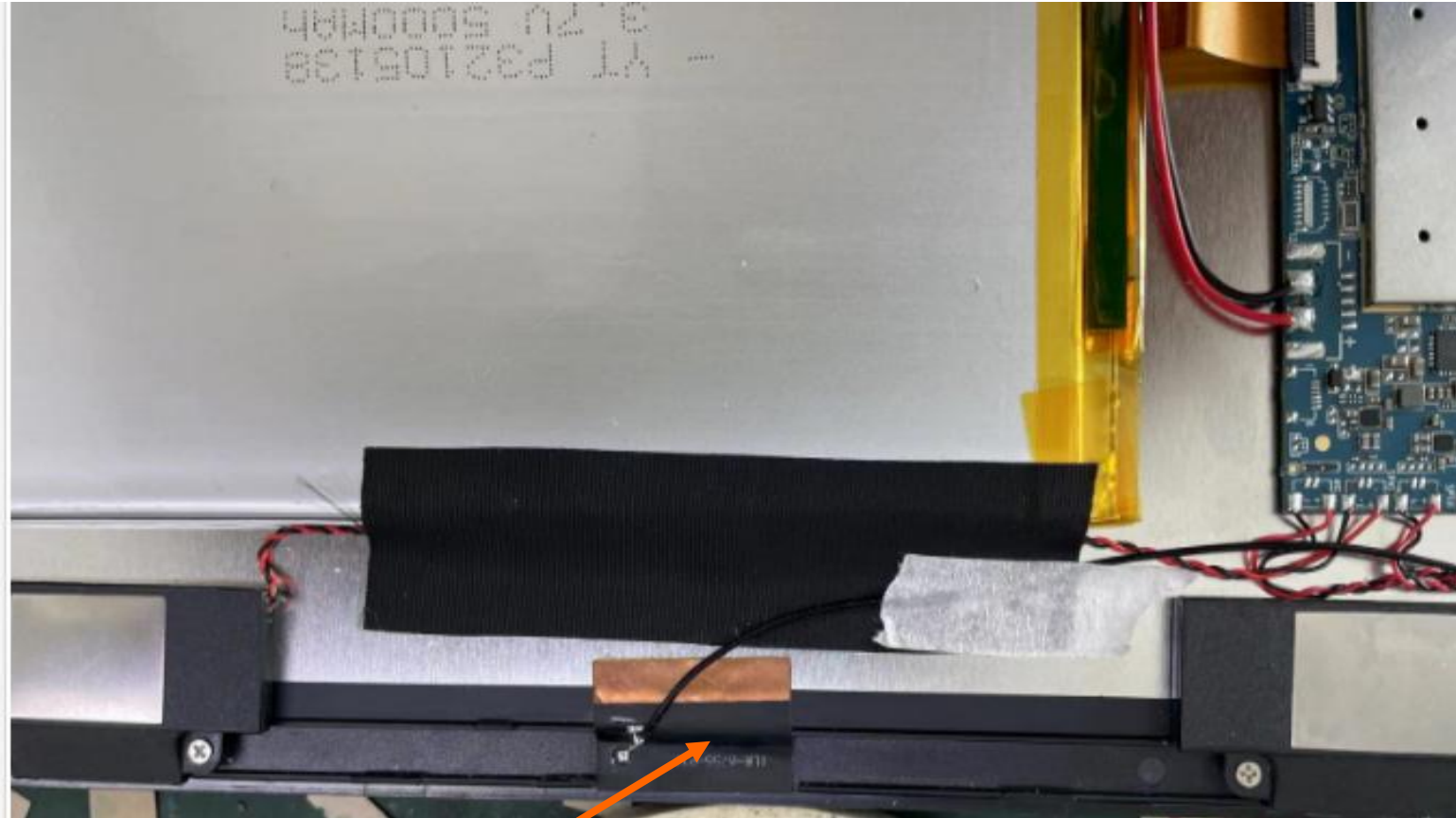


Main antenna position



Diversity antenna position

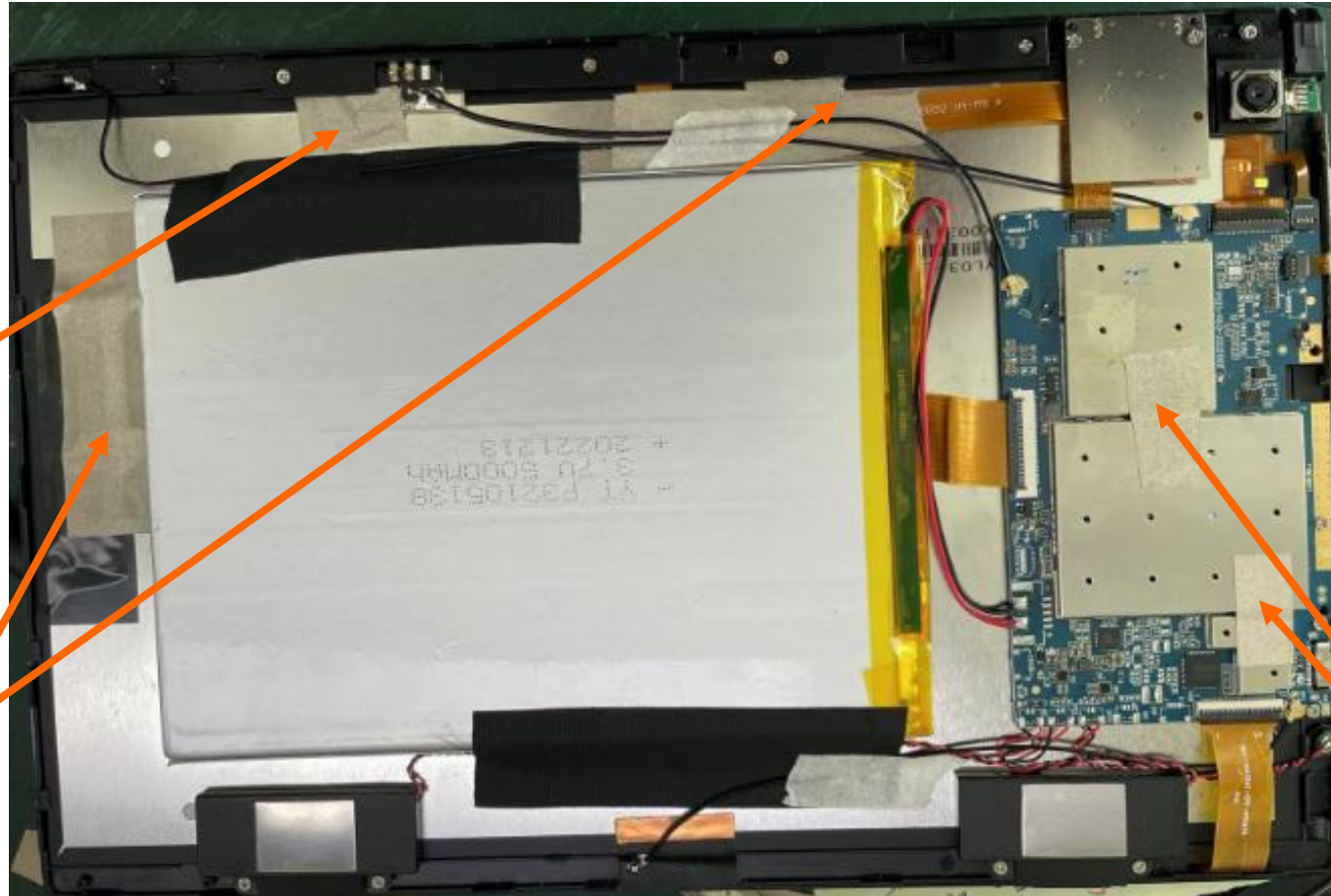
## 12. Antenna Location



Three-in-one antenna position



# 13. Environmental treatment



Main antenna position  
Main antenna grounding

Screen line paste  
conductive cloth , Camera  
line paste  
conductive cloth

Stick conductive  
cloth here

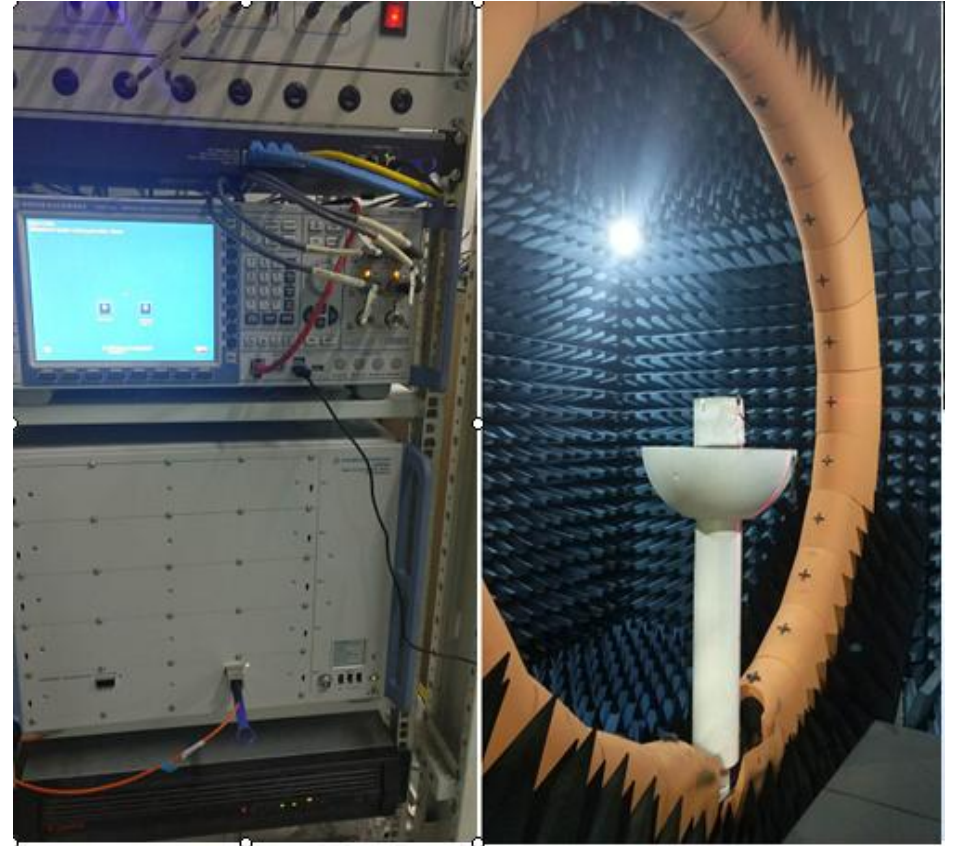




## 15.Conclusion



**The software and hardware of batch production should be the same as the sample machine.**



**THANKS !**

Shenzhen Xinlingke Technology Co., Ltd.

[www.kpantenna.com](http://www.kpantenna.com)

诚信 · 感恩