

深圳市八方达通信有限公司

Z6018天线测试报告

工程：毛宇峥

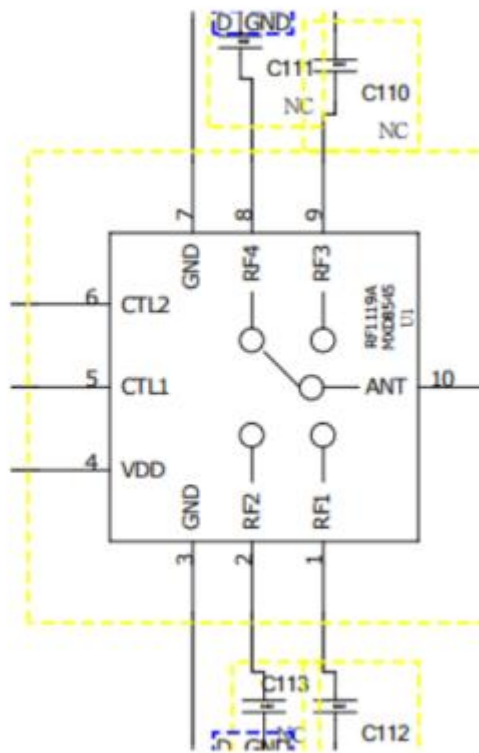
测试日期：2023-06-19

工程电话:13424326585

天线频段设计

射频	网络模式	GSM+W+LTE+BT+WIFI+GPS	
	频段要求	GSM: B2 B3 B5 B8 WCDMA: B2 B4 B5 LTE: B2 B4 B5 B12 B13 B25 B26 B41 B66 B71	
	通讯天线数量	主天线	GSM+W+LTE
		分集天线	分集
		三合一天线	GPS+WIFI+BT

开关逻辑说明

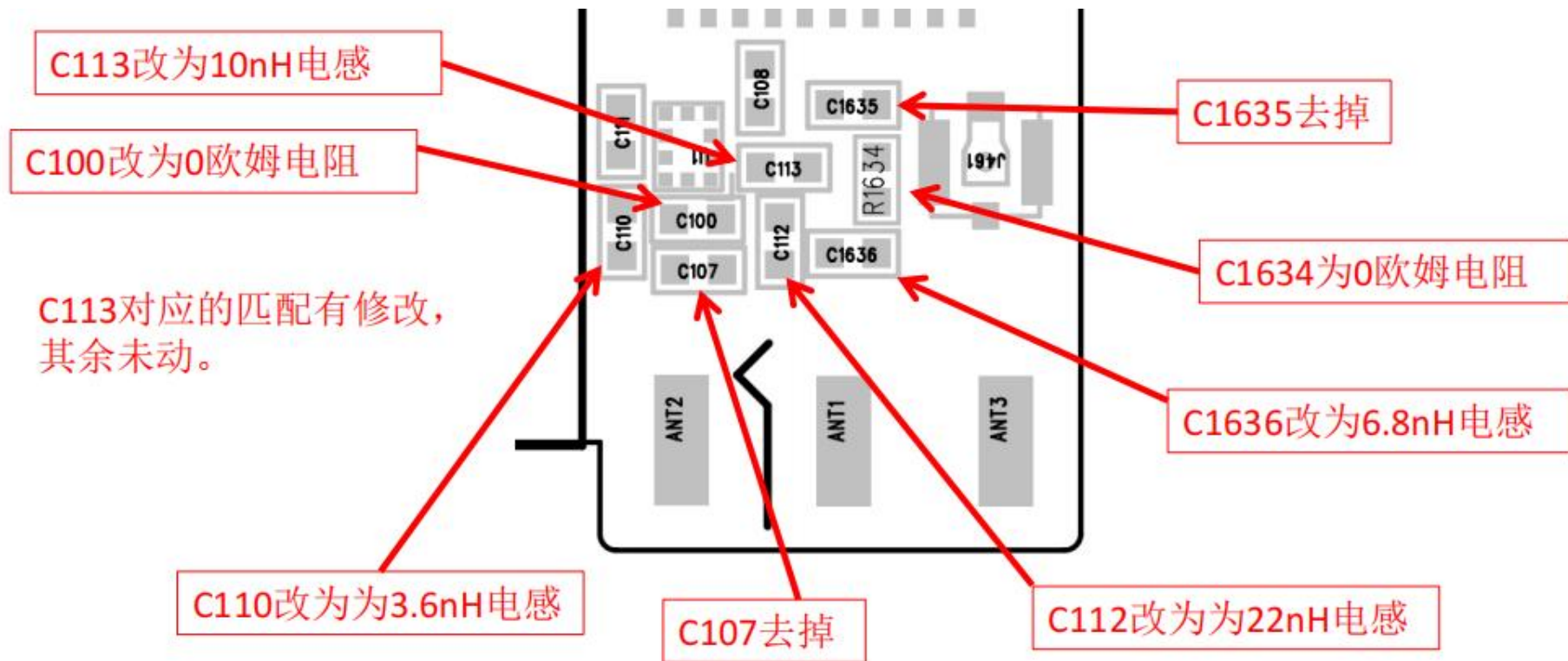


RF1: LTE(B12/B13/B71)

RF2: GSM850 WCDMA-B5 LTE(B5/B26)

RF3: GSM900/DCS/PCS WCDMA-(B2/B4) LTE(B2/B4/B25/B41/B66)

天线匹配电路说明



天线数据

Modulation	GSM 850			GSM 900			DCS 1800			PCS 1900		
Channel	Low	Medium	High	Low	Medium	High	Low	Medium	High	Low	Medium	High
TRP	25.26	26.02	25.11	25.29	25.24	25.03	25.12	25.36	25.32	25.42	25.53	25.09
TIS	-102.02	-101.21	-101.17	-100.28	-100.13	-98.24	-103.02	-103.48	-103.07	-103.23	-104.42	-104.29
Modulation	WCDMA B2			WCDMAB4			WCDMAB5					
Channel	Low	Medium	High	Low	Medium	High	Low	Medium	High			
TRP	19.42	18.12	18.14	18.37	18.28	18.21	17.36	18.02	17.42			
TIS			-103.09			-102.83			-105.53			

天线数据

Modulation	LTE B2			LTE B4			LTE B5			LTE B12		
Channel	Low	Medium	High	Low	Medium	High	Low	Medium	High	Low	Medium	High
TRP	19.68	19.51	19.32	18.34	18.50	18.69	17.30	17.38	17.12	16.29	16.84	16.85
TIS			-91.14			-90.76			-90.73			-90.36
Modulation	LTE B13			LTE B25			LTE B26			LTE B41		
Channel	Low	Medium	High	Low	Medium	High	Low	Medium	High	Low	Medium	High
TRP	16.31	16.42	16.45	18.21	18.26	18.37	17.07	17.06	17.11	22.48	23.02	22.51
TIS			-90.21			-91.34			-90.53			-90.34
Modulation	LTE B66			LTE B71								
Channel	Low	Medium	High	Low	Medium	High						
TRP	18.12	18.80	18.85	15.13	15.05	15.08						
TIS			-91.06			-88.32						.

GPS实际测试
















YGPS

SATE LLITES INFOB NMEA GPS MPE S
CNR LOC MATIO LOG TEST TATUS

G:GPS R:GLN B:BD E:GAL Q:QZS L:L1S I:IRNSS S:SBAS

Average CNR
G:38.9/HHH R:34.3/HHH B:HHH E:32.5/HHH
Q:37.0/HHH L:HHH I:HHH S:27.0/HHH

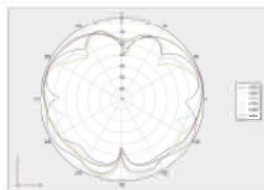
Show in single page

SVID	Fq	CNR	Elevation	Azimuth
 5 L1		41.6	50.00	354.00
 6 L1		0.0	15.00	113.00
 11 L1		34.7	50.00	80.00
 13 L1		40.1	76.00	138.00
 15 L1		42.6	52.00	221.00
 29 L1		35.3	41.00	306.00
 30 L1		0.0	13.00	72.00
 70 L1		25.0	61.00	276.00
 84 L1		40.0	0.00	0.00
 85 L1		37.8	30.00	339.00
 7 L1		35.9	47.00	212.00
 8 L1		29.1	75.00	51.00
 13 L1		0.0	54.00	352.00
 3 L1		37.0	66.00	117.00
 45 L1		27.0	54.00	224.00

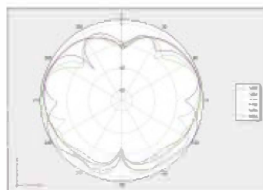
BT/2.4G WiFi/5G WiFi

Frequency	Efficiency(%)	Gain.(dBi)
2400MHz	46.83	1.07
2450MHz	48.71	1.08
2500MHz	48.82	1.09
5100MHz	45.81	1.09
5450MHz	45.52	1.07
5850MHz	44.92	1.06

Phi 0 2D 图



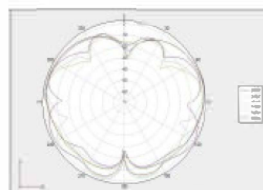
Phi 90 2D 图



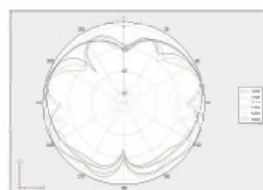
Theta 90 2D 图



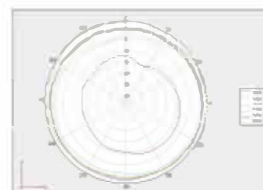
Phi 0 2D 图:



Phi 90 2D 图



Theta 90 2D 图

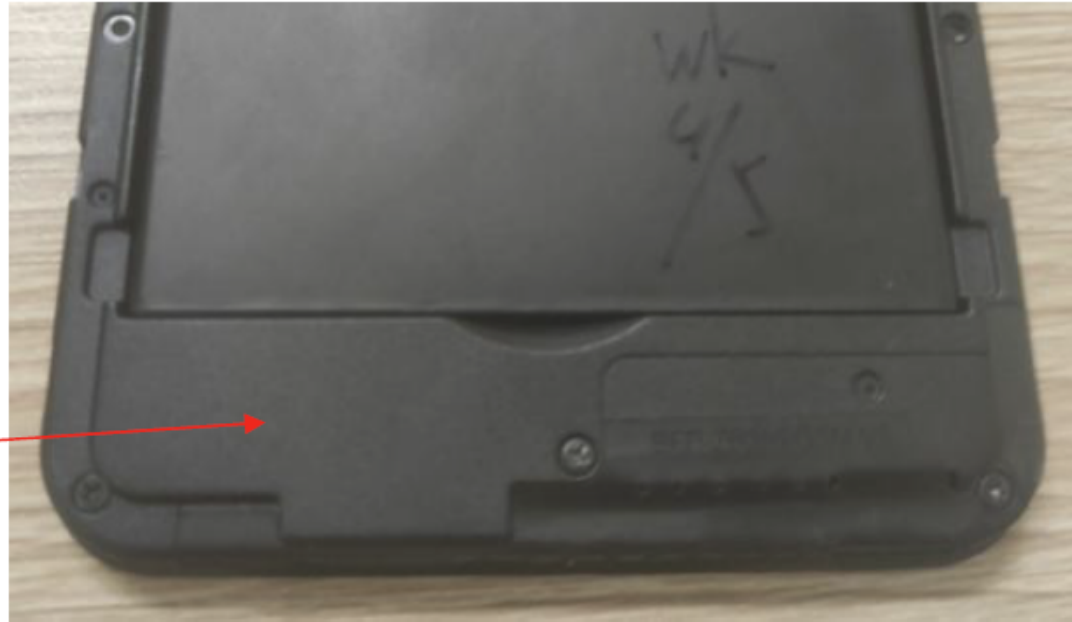
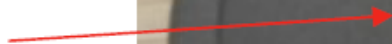


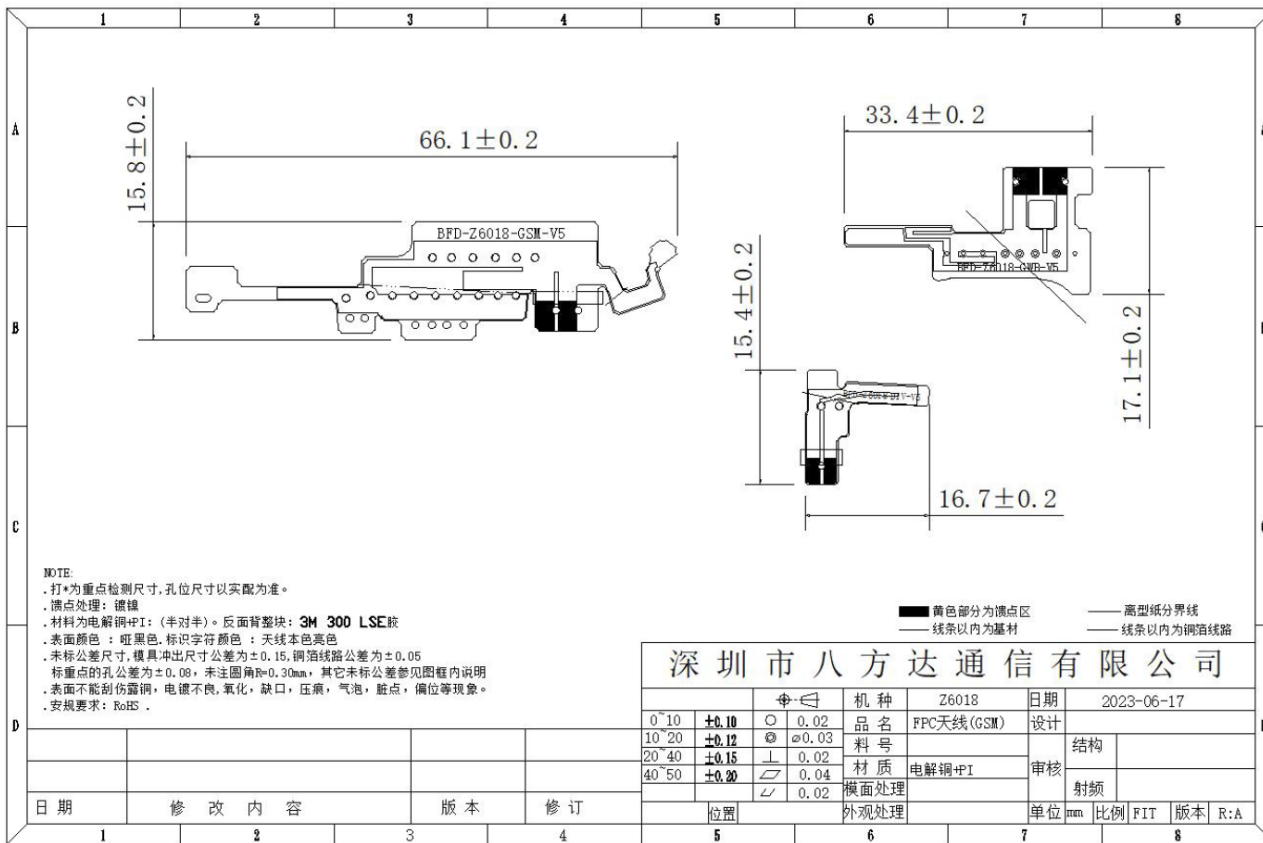
天线增益值

BAND	Gain (MAX)
GSM850	0.62
GSM900	0.47
DCS1800	0.53
PCS1900	0.54
WCDMA850	0.62
WCDMA1700	0.53
WCDMA1900	0.54
LTE B2	0.54
LTE B4	0.53
LTE B5	0.62
LTE B12	0.56
LTE B13	0.56
LTE B25	0.54
LTE B26	0.62
LTE B41	0.75
LTE B66	0.53
LTE B71	0.52
GPS	1.08
WIFI/BT	1.09

天线照片

Main antenna





NOTE:

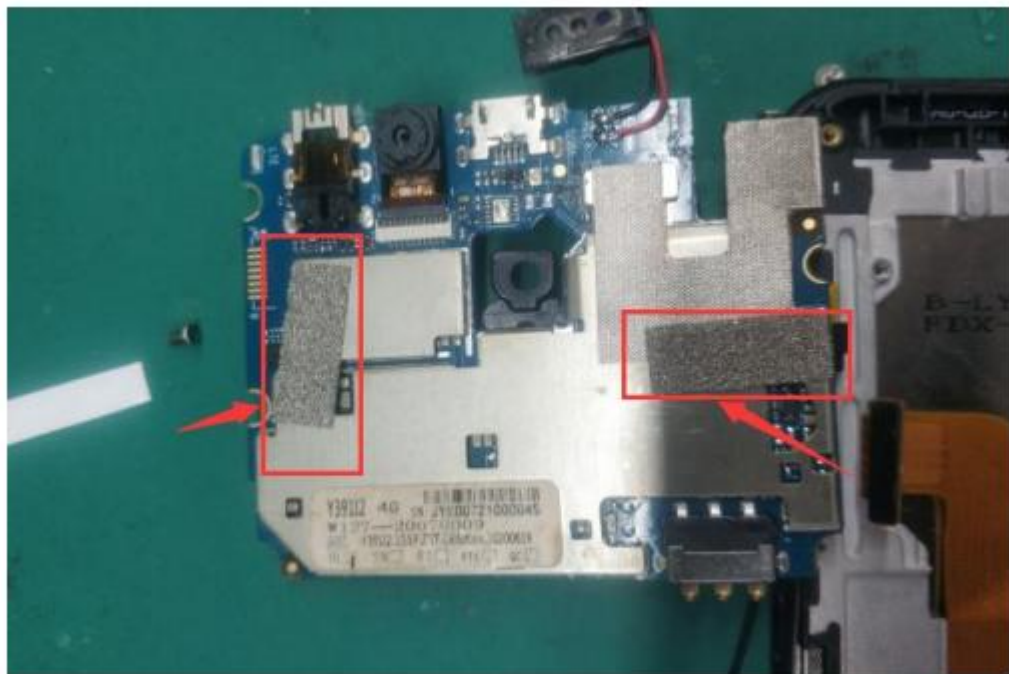
- .打*为重点检测尺寸,孔位尺寸以实配为准。
- .镀点处理: 镀镍
- .材料为电解铜+PI: (半对半)。反面背整块: **3M 300 LSE**板
- .表面颜色: 哑黑色,标识字符颜色: 天线本色黄色
- .未标公差尺寸,模具冲出尺寸公差为 ± 0.15,铜箔线路公差为 ± 0.05
- .标重点的孔公差为 ± 0.08,未注圆角R=0.30mm,其它未标公差参见图框内说明
- .表面不能刮伤露铜,电镀不良,氧化,缺口,压痕,气泡,脏点,偏位等现象。
- .外观要求: RoHS .

黄色部分为镀点区
 线条以内为基材
 高型纸分界线
 线条以内为铜箔线路

深圳市八方达通信有限公司

0° 10	±0.10	○	0.02	机种	Z6018	日期	2023-06-17
10° 20	±0.12	◎	0.03	品名	FPC天线(GSM)	设计	
20° 40	±0.15	⊥	0.02	料号		结构	
40° 50	±0.20	∠	0.04	材质	电解铜+PI	审核	
日期	修改内容	版本	修订	横面处理		射频	
				外观处理		单位	mm 比例 FIT 版本 R:A
1	2	3	4	5	6	7	8

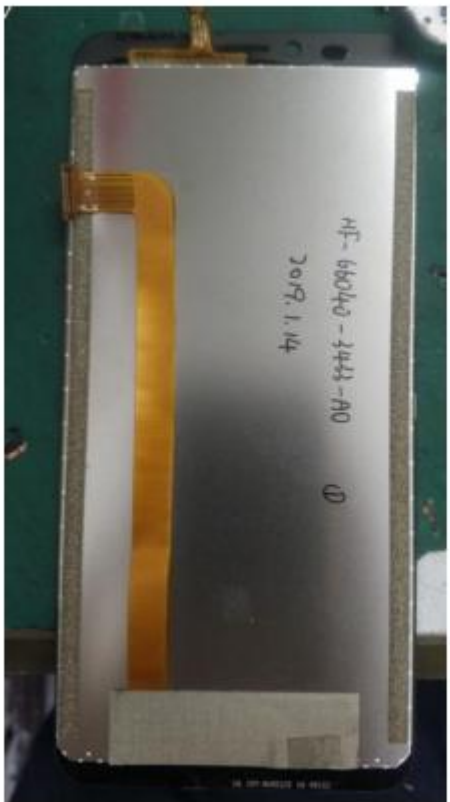
天线环境处理及说明



文字说明

- 1、主板如图所示做好接地处理
- 2、摄像头贴导电布接地

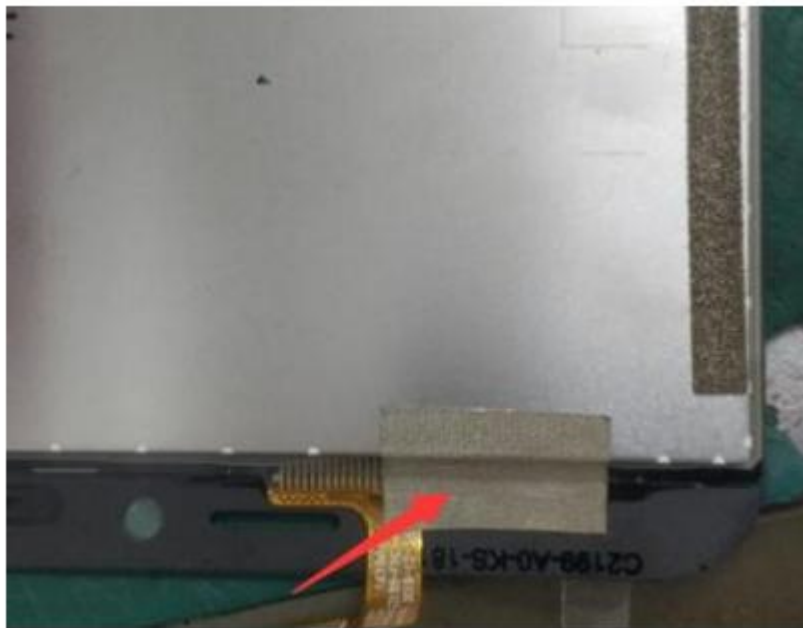
天线环境处理及说明



文字说明

- 1、屏两侧贴导电泡棉
- 2、屏FPC包导电布接地

天线环境处理及说明



文字说明

TPC出口贴导电布

环境处理及说明



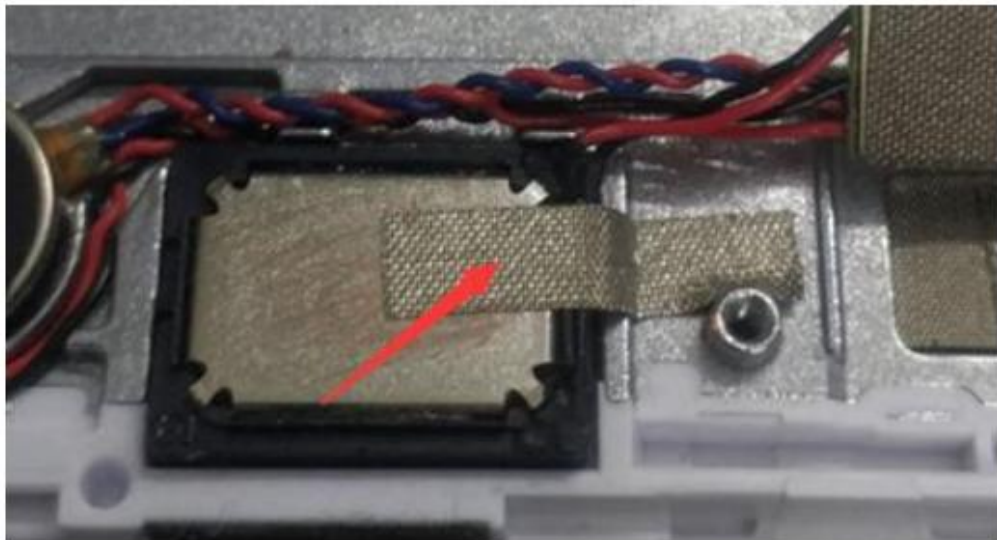
文字说明

如图所示：

红框处排线按之前的导电布是外露的，建议导电布加长一点覆盖这里。

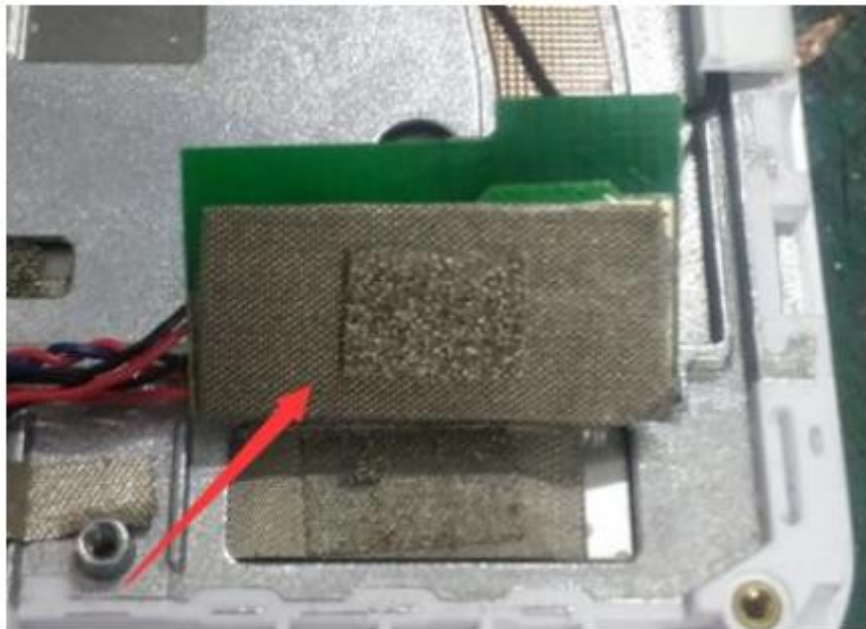
天线环境处理及说明

文字说明



喇叭磁钢做好接地处理

天线环境处理及说明



文字说明

小板如图所示做好接地处理，
连接小板背面和屏导电布的导电
海绵适当加厚，需要有一定硬度。

深圳市八方达通信有限公司

SHENZHEN BFD COMMUNICATION EQUIPMENT CO.,LTD



公司地址：深圳市福田区车公庙泰然工贸园212栋311

公司电话：0755-82737516 传真：0755-82737505

公司邮箱：best-just@163.com <http://www.best-just.com>