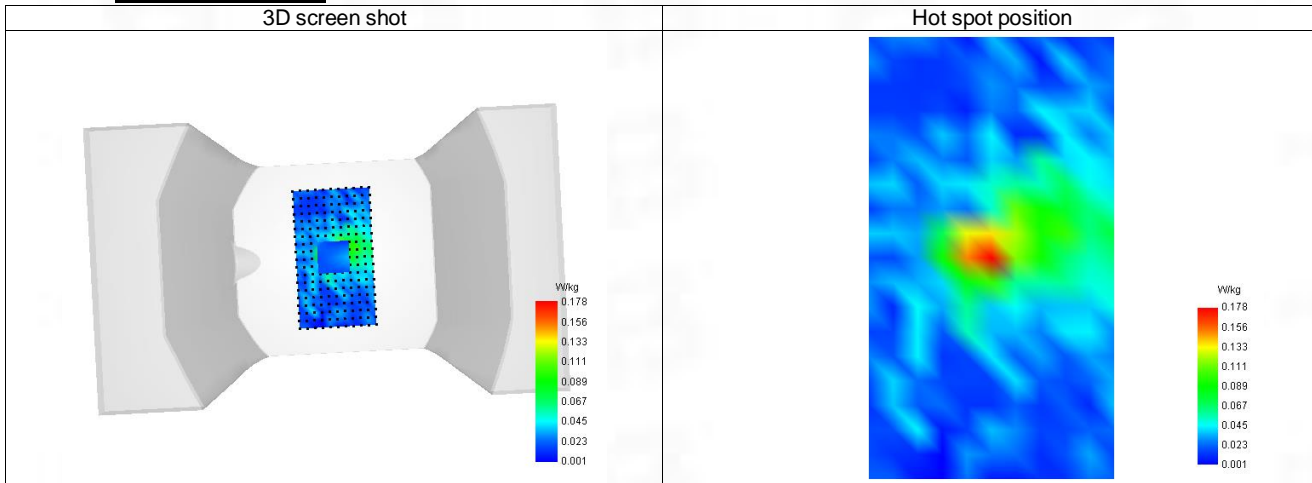


F. 3D Image



33-Head with front position in dist. 0mm on Channel 36 in IEEE 802.11a U-NII

SAR Measurement at IEEE 802.11a U-NII (Tilt, Right)

Date of measurement: 14/6/2023

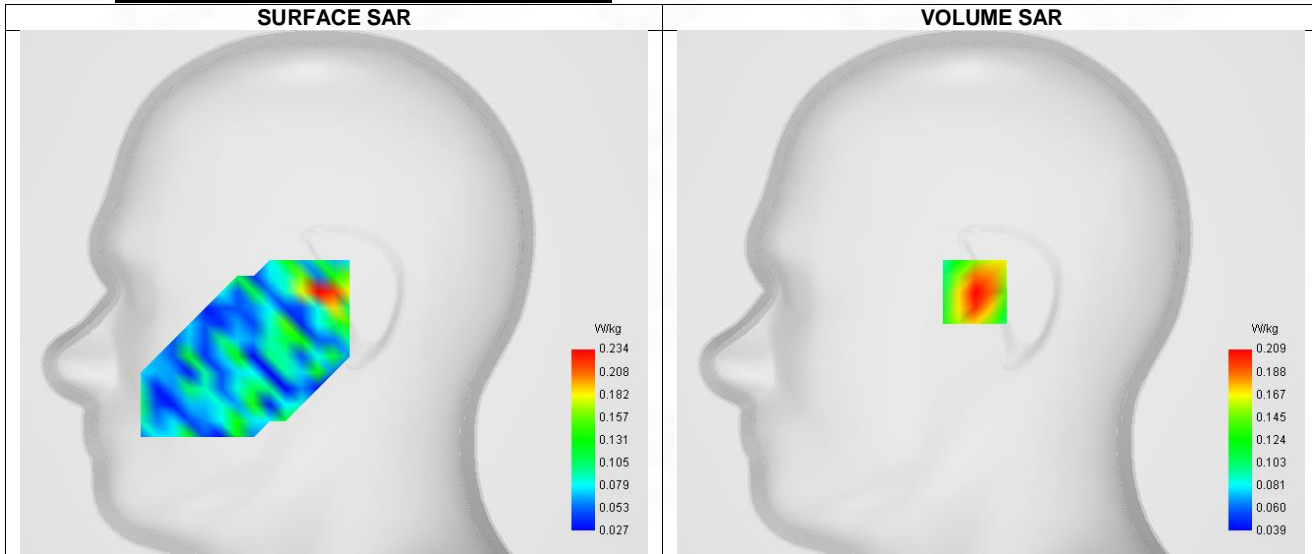
A. Experimental conditions.

Probe	SN 04/22 EPGO365
ConvF	2.24
Area Scan	sam_direct_droit2_surf8mm.txt
Zoom Scan	5x5x7,dx=8mm dy=8mm dz=5mm,Complete
Phantom	Right head
Device Position	Tilt
Band	IEEE 802.11a U-NII
Channels	Lower (36)
Signal	IEEE 802.11

B. Permittivity

Frequency (MHz)	5180.000
Relative permittivity (real part)	35.900
Relative permittivity (imaginary part)	16.230
Conductivity (S/m)	4.680

C. SAR Surface and Volume



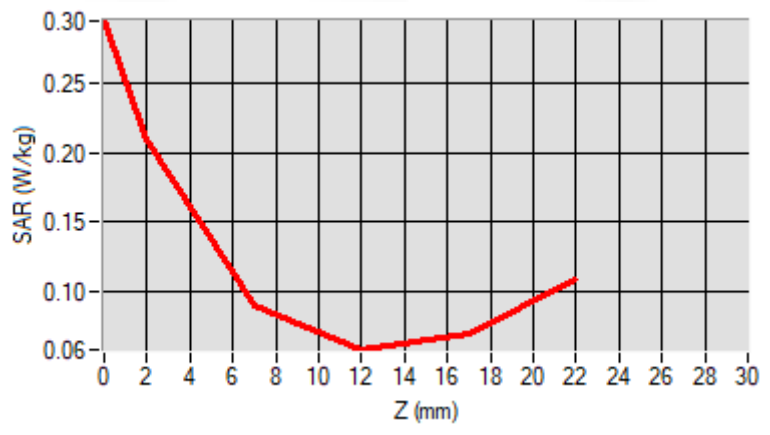
Maximum location: X=-8.00, Y=0.00 ; SAR Peak: 0.41 W/kg

D. SAR 1g & 10g

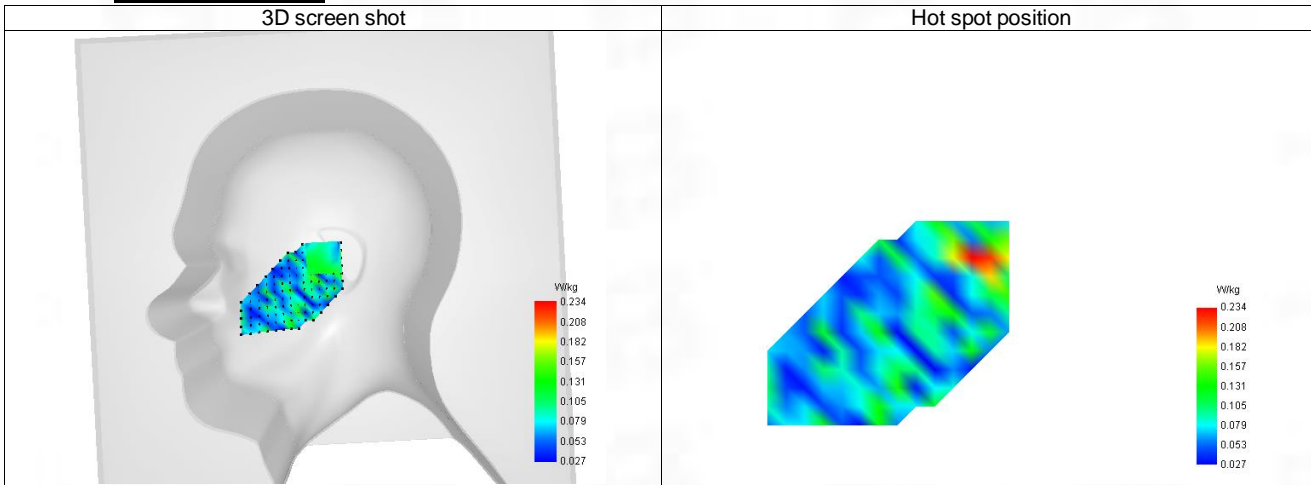
SAR 10g (W/Kg)	0.132
SAR 1g (W/Kg)	0.210
Variation (%)	2.460
Horizontal validation criteria: minimum distance (mm)	0.000000
Vertical validation criteria: SAR ratio M2/M1 (%)	0.000000

E. Z Axis Scan

Z (mm)	0.00	2.00	7.00	12.00	17.00
SAR (W/Kg)	0.295	0.209	0.090	0.058	0.070



F. 3D Image



34-Body with back position in dist. 10mm on Channel 36 in IEEE 802.11a U-NII

SAR Measurement at IEEE 802.11a U-NII (Body, Validation Plane)

Date of measurement: 14/6/2023

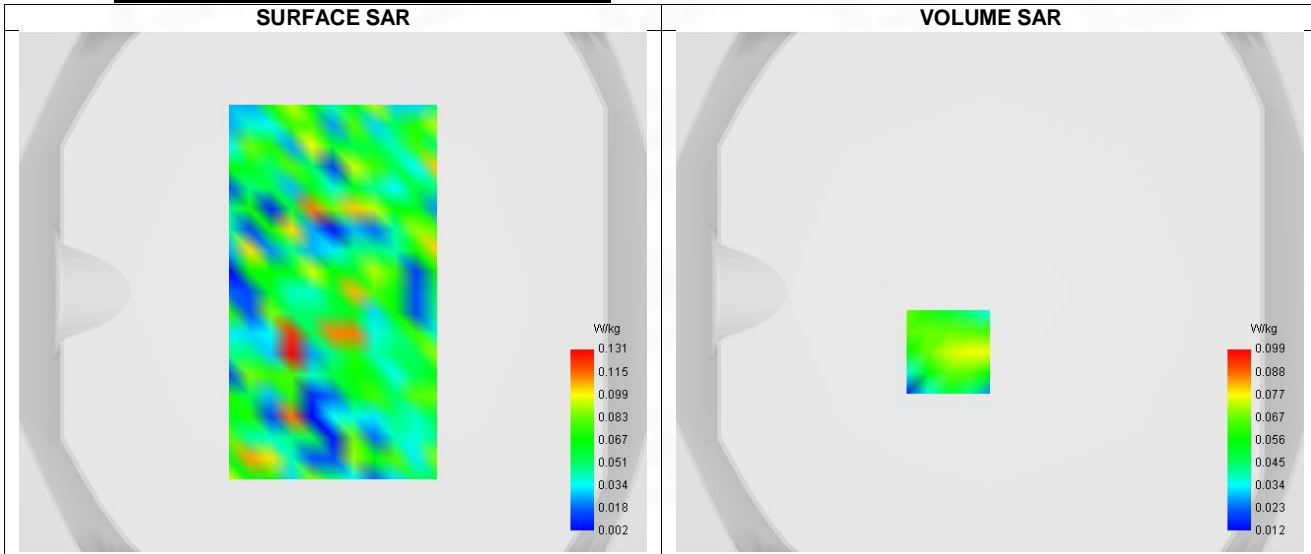
A. Experimental conditions.

Probe	SN 04/22 EPGO365
ConvF	2.24
Area Scan	surf_sam_plan.txt
Zoom Scan	5x5x7,dx=8mm dy=8mm dz=5mm,Complete
Phantom	Validation plane
Device Position	Body
Band	IEEE 802.11a U-NII
Channels	Lower (36)
Signal	IEEE 802.11

B. Permittivity

Frequency (MHz)	5180.000
Relative permittivity (real part)	35.900
Relative permittivity (imaginary part)	16.230
Conductivity (S/m)	4.680

C. SAR Surface and Volume



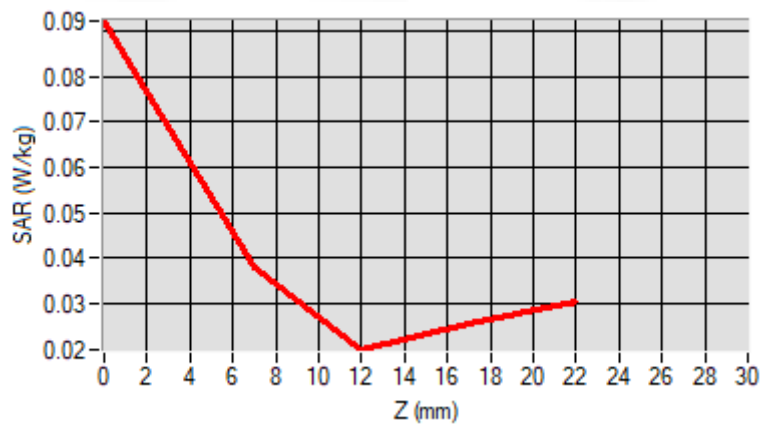
Maximum location: X=-16.00, Y=-23.00 ; SAR Peak: 0.11 W/kg

D. SAR 1g & 10g

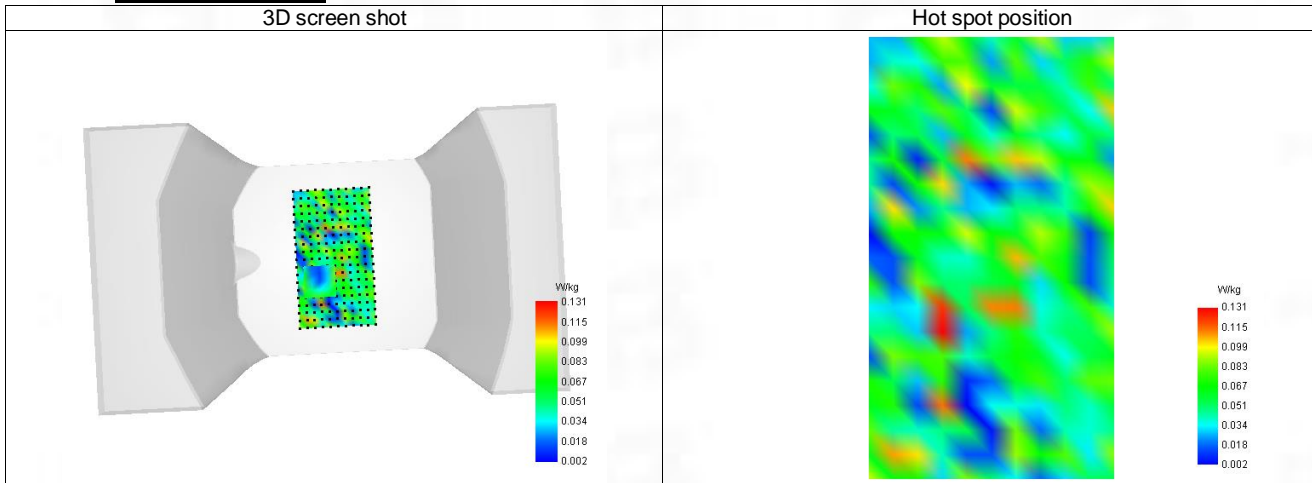
SAR 10g (W/Kg)	0.050
SAR 1g (W/Kg)	0.069
Variation (%)	-1.640
Horizontal validation criteria: minimum distance (mm)	0.000000
Vertical validation criteria: SAR ratio M2/M1 (%)	0.000000

E. Z Axis Scan

Z (mm)	0.00	2.00	7.00	12.00	17.00
SAR (W/Kg)	0.092	0.077	0.038	0.020	0.025



F. 3D Image



35-Head with front position in dist. 0mm on Channel 64 in IEEE 802.11n U-NII

SAR Measurement at IEEE 802.11n U-NII (Tilt, Right)

Date of measurement: 14/6/2023

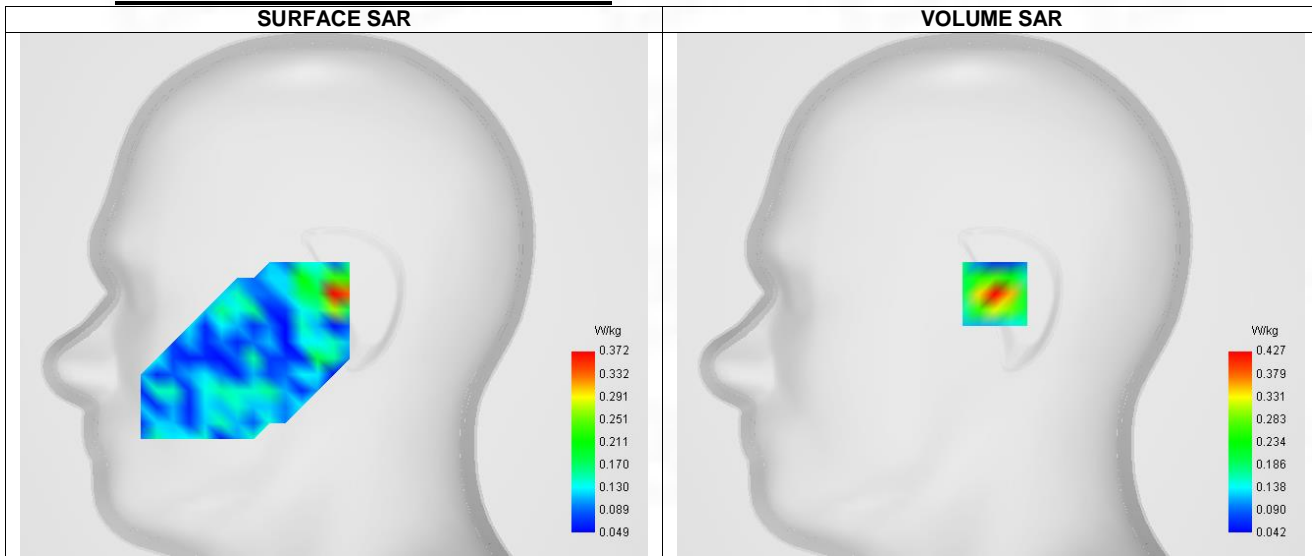
A. Experimental conditions.

Probe	SN 04/22 EPG0365
ConvF	2.12
Area Scan	sam_direct_droit2_surf8mm.txt
Zoom Scan	5x5x7,dx=8mm dy=8mm dz=5mm,Complete
Phantom	Right head
Device Position	Tilt
Band	IEEE 802.11n U-NII
Channels	Lower (64)
Signal	IEEE 802.11

B. Permittivity

Frequency (MHz)	5320.000
Relative permittivity (real part)	35.800
Relative permittivity (imaginary part)	16.200
Conductivity (S/m)	4.816

C. SAR Surface and Volume



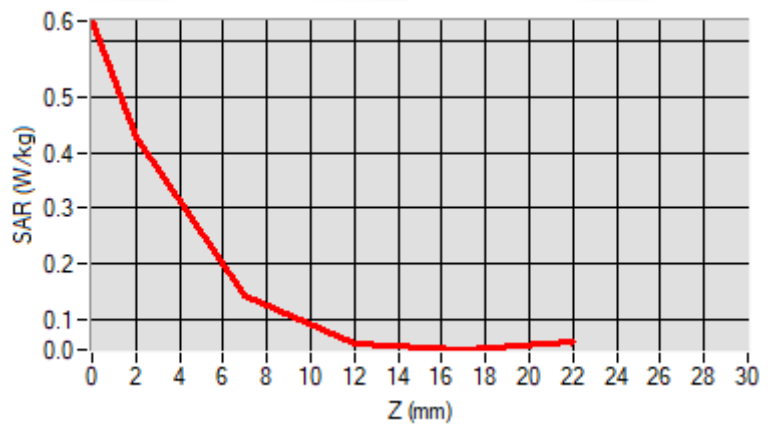
Maximum location: X=2.00, Y=0.00 ; SAR Peak: 0.94 W/kg

D. SAR 1g & 10g

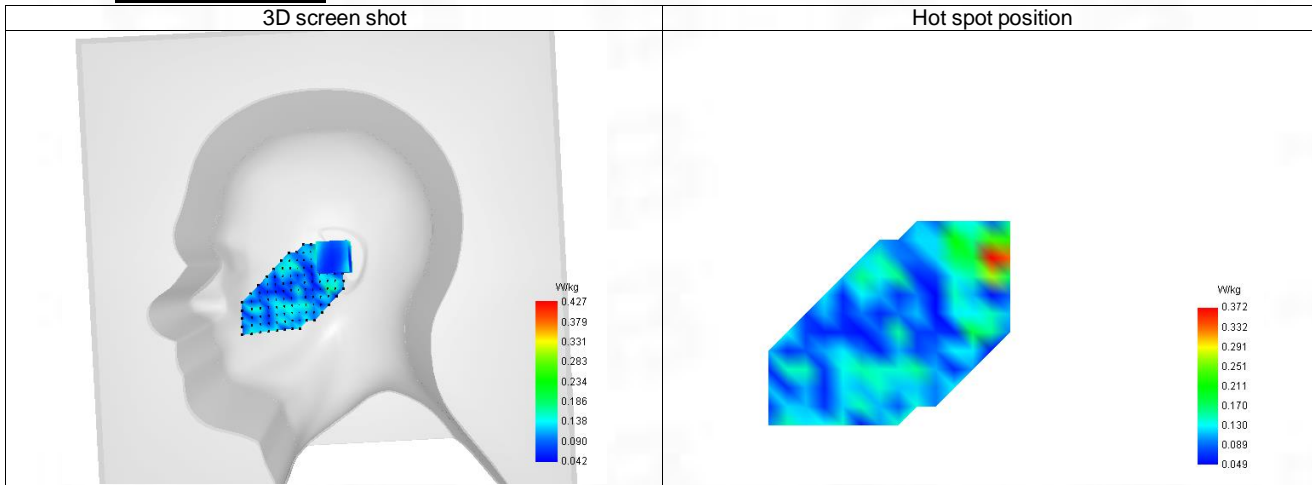
SAR 10g (W/Kg)	0.199
SAR 1g (W/Kg)	0.411
Variation (%)	1.250
Horizontal validation criteria: minimum distance (mm)	0.000000
Vertical validation criteria: SAR ratio M2/M1 (%)	0.000000

E. Z Axis Scan

Z (mm)	0.00	2.00	7.00	12.00	17.00
SAR (W/Kg)	0.637	0.427	0.143	0.056	0.045



F. 3D Image



36-Body with back position in dist. 10mm on Channel 64 in IEEE 802.11n U-NII

SAR Measurement at IEEE 802.11n U-NII (Body, Validation Plane)

Date of measurement: 14/6/2023

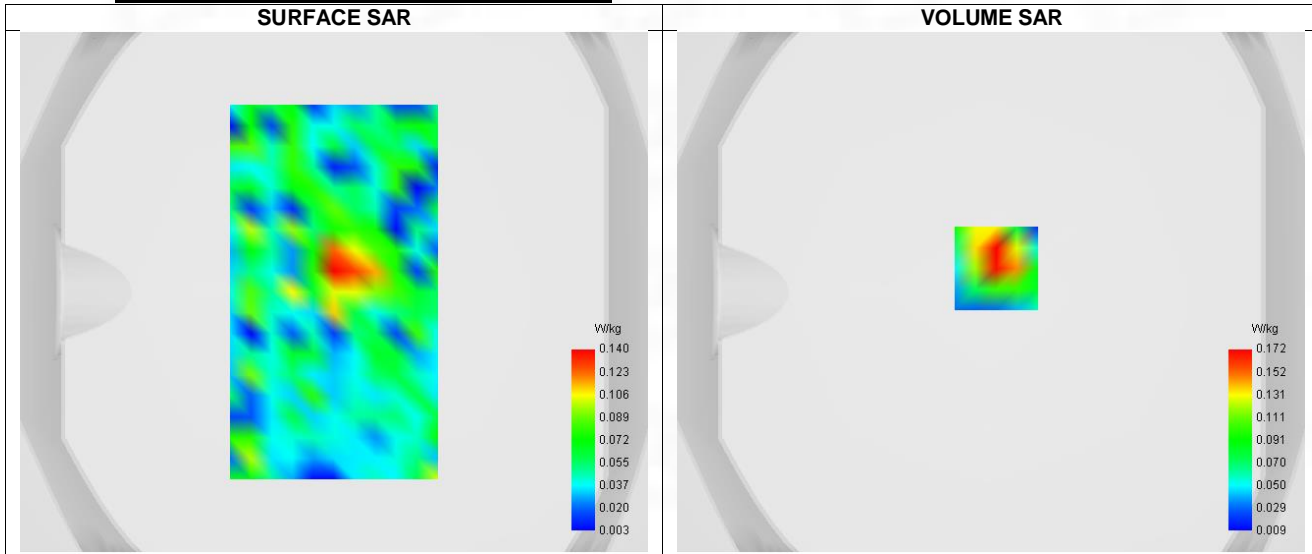
A. Experimental conditions.

Probe	SN 04/22 EPGO365
ConvF	2.12
Area Scan	surf_sam_plan.txt
Zoom Scan	5x5x7,dx=8mm dy=8mm dz=5mm,Complete
Phantom	Validation plane
Device Position	Body
Band	IEEE 802.11n U-NII
Channels	Lower (64)
Signal	IEEE 802.11

B. Permittivity

Frequency (MHz)	5320.000
Relative permittivity (real part)	35.800
Relative permittivity (imaginary part)	16.200
Conductivity (S/m)	4.816

C. SAR Surface and Volume



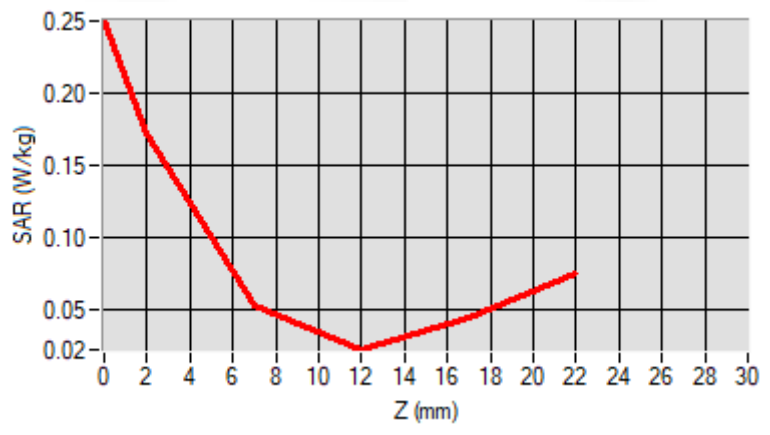
Maximum location: X=2.00, Y=9.00 ; SAR Peak: 0.29 W/kg

D. SAR 1g & 10g

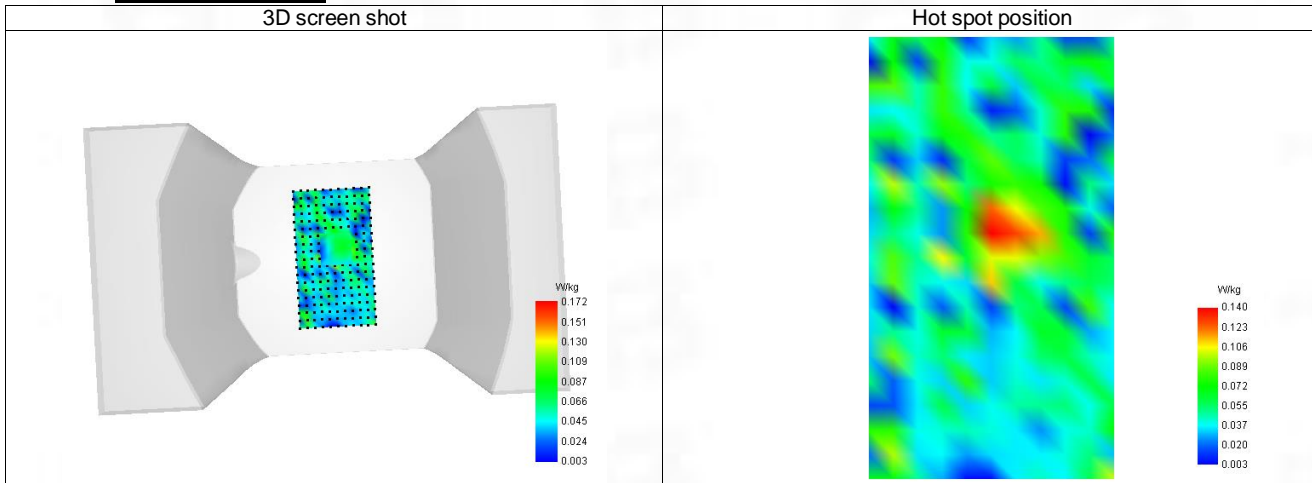
SAR 10g (W/Kg)	0.069
SAR 1g (W/Kg)	0.117
Variation (%)	-1.180
Horizontal validation criteria: minimum distance (mm)	0.000000
Vertical validation criteria: SAR ratio M2/M1 (%)	0.000000

E. Z Axis Scan

Z (mm)	0.00	2.00	7.00	12.00	17.00
SAR (W/Kg)	0.250	0.172	0.054	0.023	0.045



F. 3D Image



37-Head with front position in dist. 0mm on Channel 151 in IEEE 802.11n U-NII

SAR Measurement at IEEE 802.11n U-NII (Tilt, Right)

Date of measurement: 14/6/2023

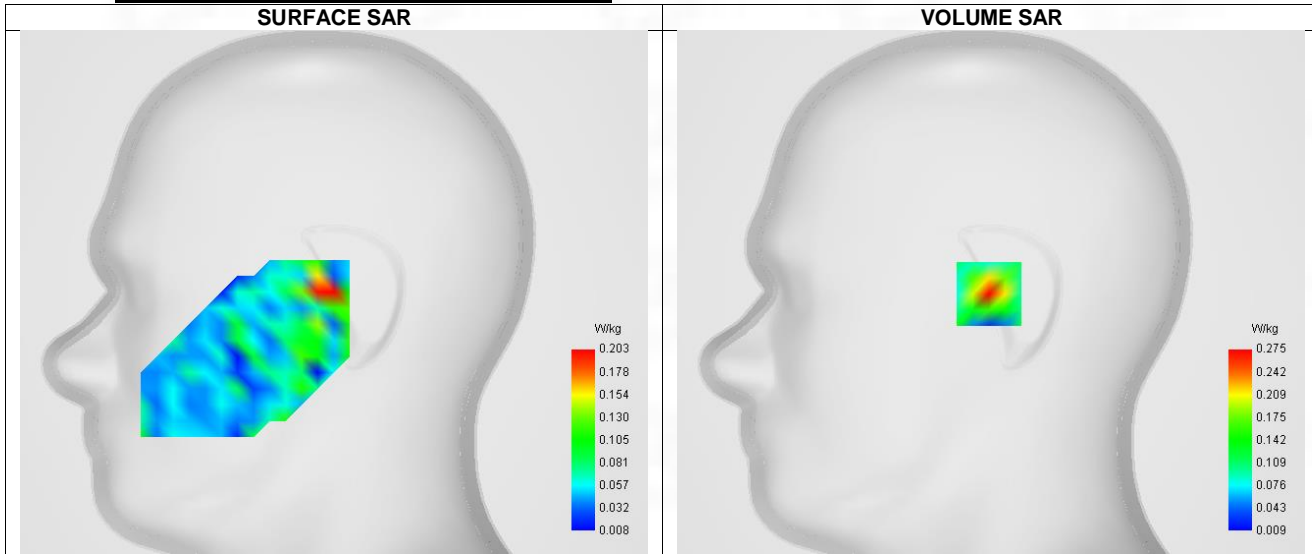
A. Experimental conditions.

Probe	SN 04/22 EPGO365
ConvF	2.04
Area Scan	sam_direct_droit2_surf8mm.txt
Zoom Scan	5x5x7,dx=8mm dy=8mm dz=5mm,Complete
Phantom	Right head
Device Position	Tilt
Band	IEEE 802.11n U-NII
Channels	Higher (151)
Signal	IEEE 802.11

B. Permittivity

Frequency (MHz)	5755.000
Relative permittivity (real part)	35.225
Relative permittivity (imaginary part)	16.575
Conductivity (S/m)	5.265

C. SAR Surface and Volume



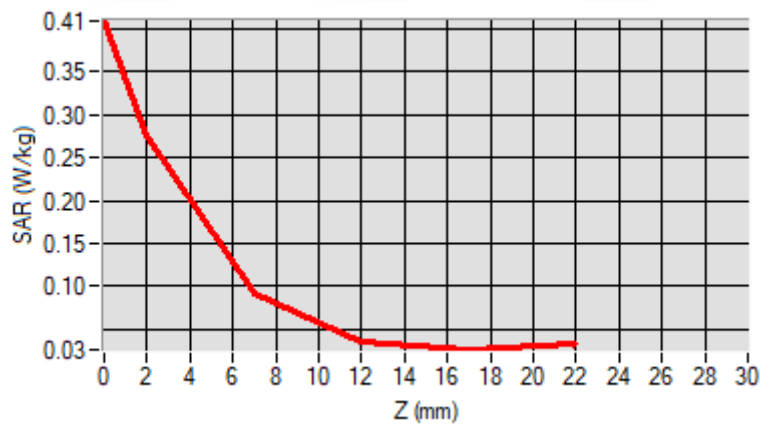
Maximum location: X=-1.00, Y=-1.00 ; SAR Peak: 0.60 W/kg

D. SAR 1g & 10g

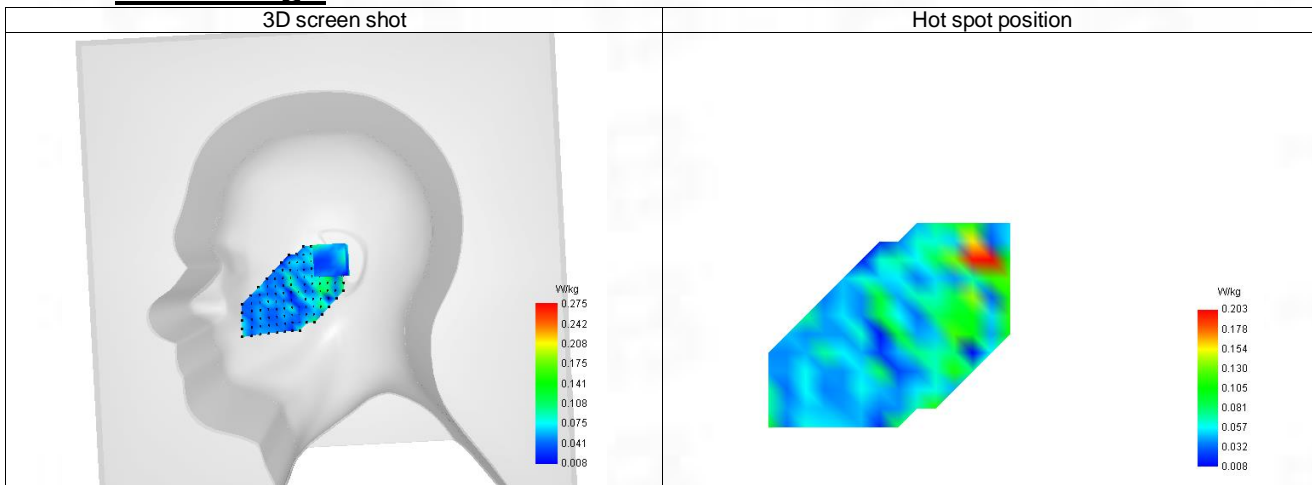
SAR 10g (W/Kg)	0.118
SAR 1g (W/Kg)	0.259
Variation (%)	-2.500
Horizontal validation criteria: minimum distance (mm)	0.000000
Vertical validation criteria: SAR ratio M2/M1 (%)	0.000000

E. Z Axis Scan

Z (mm)	0.00	2.00	7.00	12.00	17.00
SAR (W/Kg)	0.409	0.275	0.092	0.035	0.026



F. 3D Image



38-Body with back position in dist. 10mm on Channel 151 in IEEE 802.11n U-NII

SAR Measurement at IEEE 802.11n U-NII (Body, Validation Plane)

Date of measurement: 14/6/2023

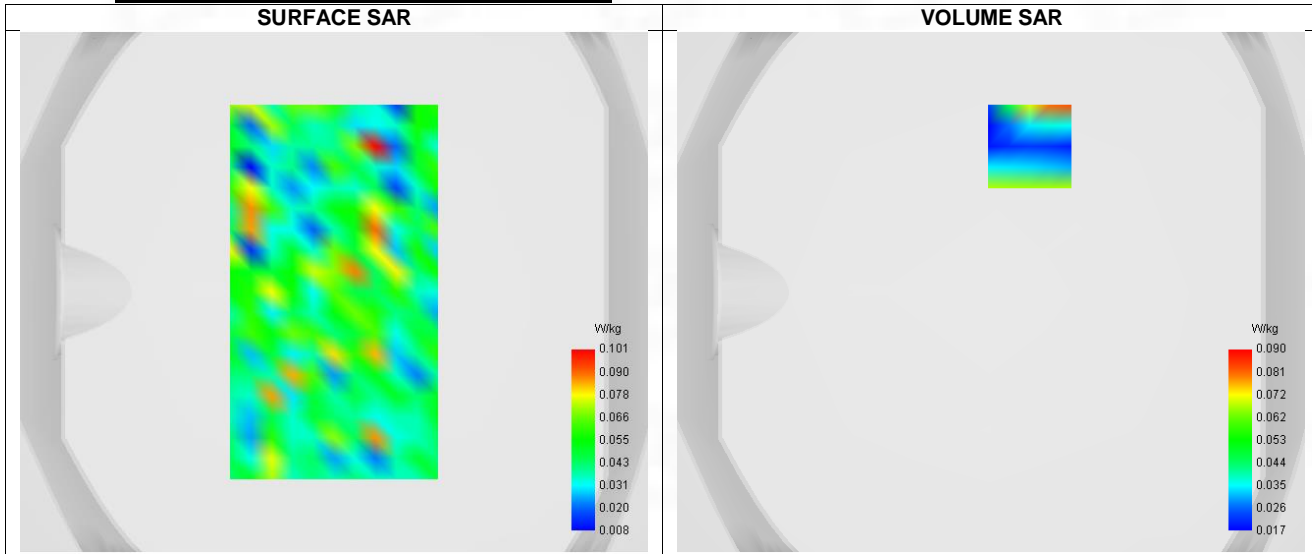
A. Experimental conditions.

Probe	SN 04/22 EPGO365
ConvF	2.04
Area Scan	surf_sam_plan.txt
Zoom Scan	5x5x7,dx=8mm dy=8mm dz=5mm,Complete
Phantom	Validation plane
Device Position	Body
Band	IEEE 802.11n U-NII
Channels	Higher (151)
Signal	IEEE 802.11

B. Permittivity

Frequency (MHz)	5755.000
Relative permittivity (real part)	35.225
Relative permittivity (imaginary part)	16.575
Conductivity (S/m)	5.265

C. SAR Surface and Volume



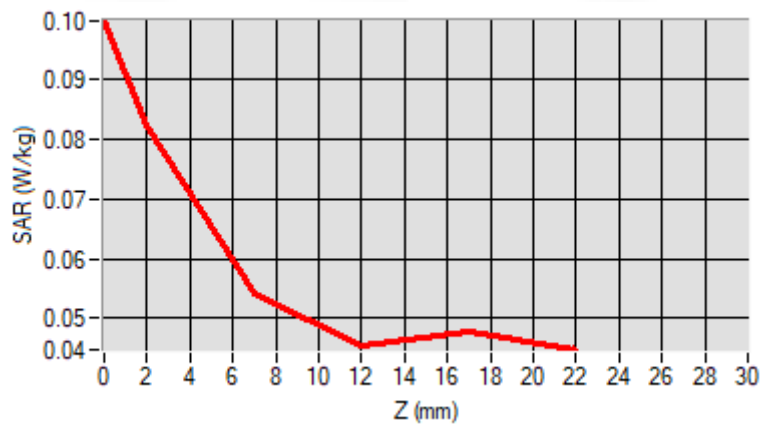
Maximum location: X=15.00, Y=56.00 ; SAR Peak: 0.11 W/kg

D. SAR 1g & 10g

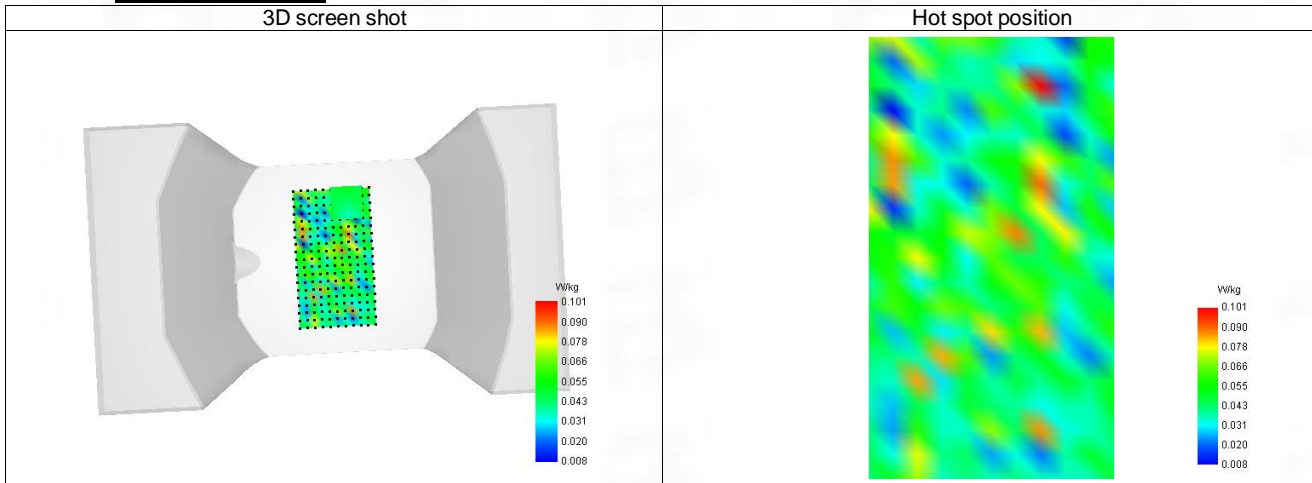
SAR 10g (W/Kg)	0.059
SAR 1g (W/Kg)	0.064
Variation (%)	1.800
Horizontal validation criteria: minimum distance (mm)	0.000000
Vertical validation criteria: SAR ratio M2/M1 (%)	0.000000

E. Z Axis Scan

Z (mm)	0.00	2.00	7.00	12.00	17.00
SAR (W/Kg)	0.100	0.082	0.054	0.046	0.048

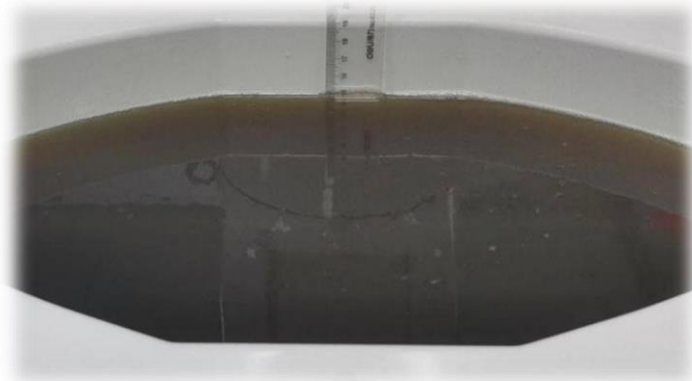


F. 3D Image

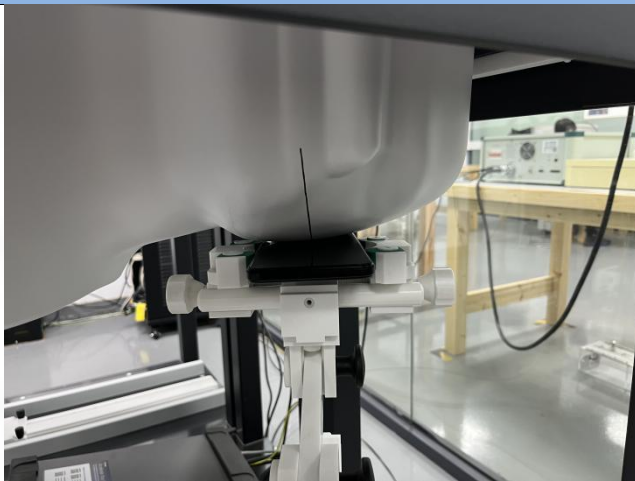


ANNEX D SAR Test Setup Photos

Reference Photo: simulation liquid depth 15cm



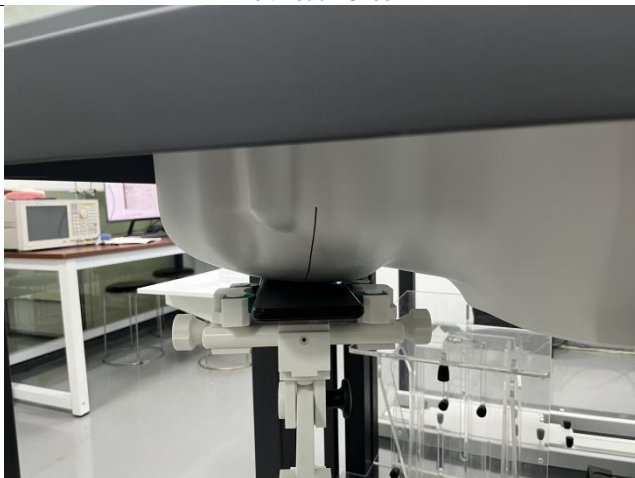
Reference Photos



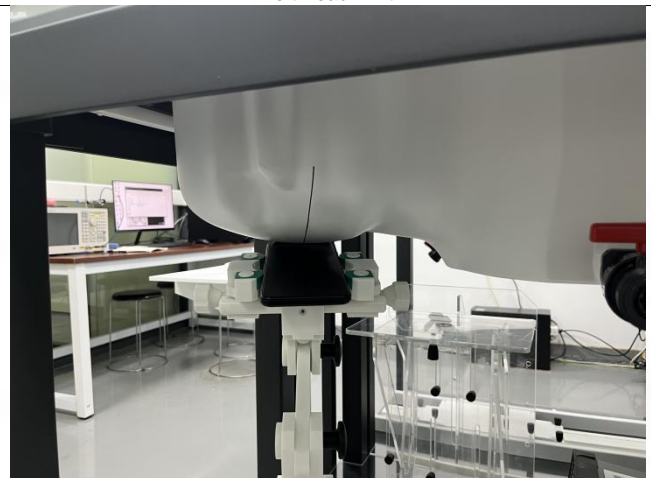
Left Head - Cheek



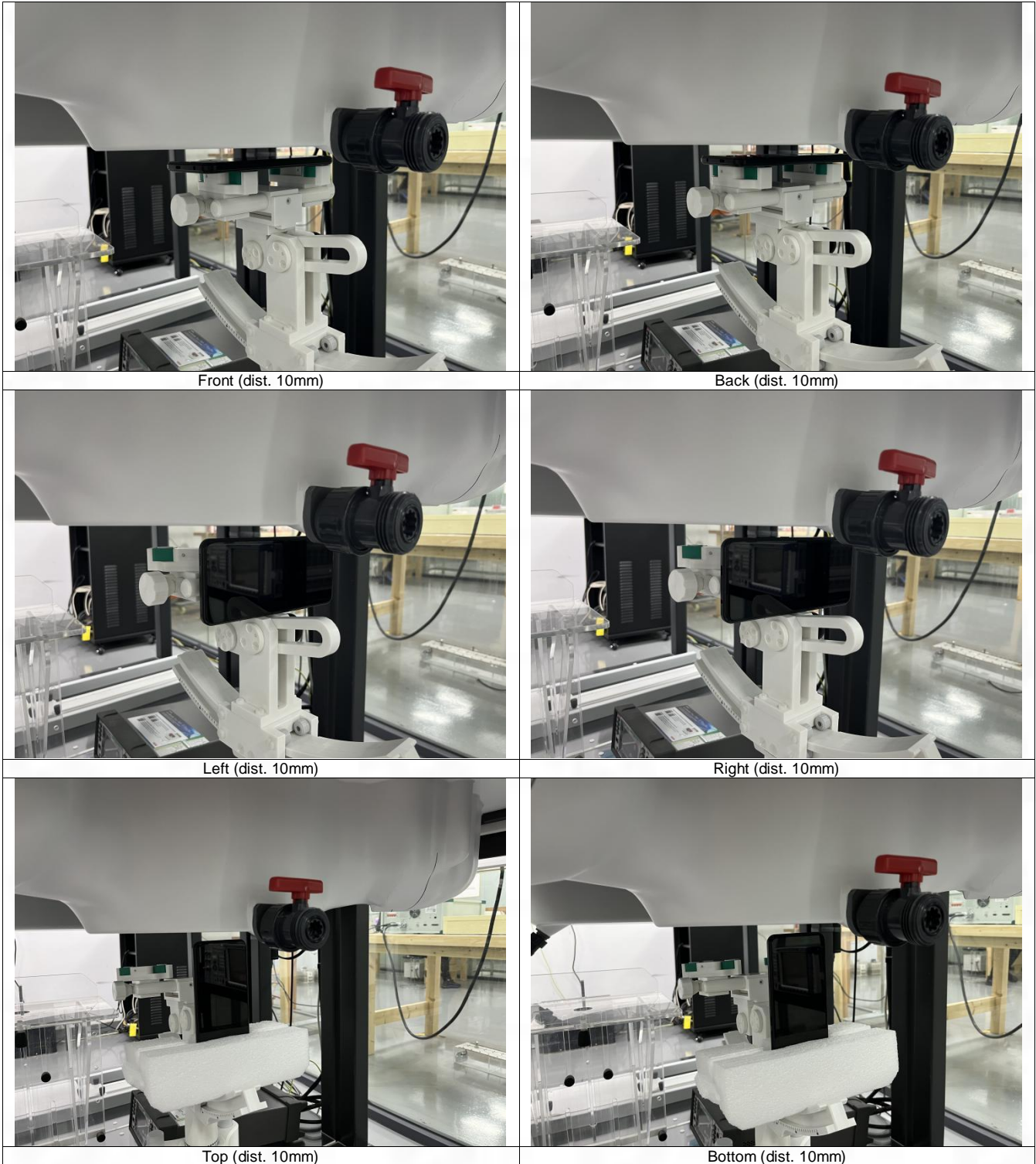
Left Head - Tilt



Right Head - Cheek



Right Head - Tilt



ANNEX E EUT External and Internal Photos

Please refer to RF Report.

ANNEX F Calibration Information

Please refer to the document "Calibration.pdf".



BTF Testing Lab (Shenzhen) Co., Ltd.

F101, 201 and 301, Building 1, Block 2, Tantou Industrial Park, Tantou Community, Songgang Street,
Bao'an District, Shenzhen, China

www.btf-lab.com

--END OF REPORT--