
天线测试报告

DOSKING Antenna Test Report

※: 测试设备环境基于以下:

1. ETS Chamber 7×4×3(m)(3D 暗室) / 5×3×3(m)(3D 暗室), 矢量网络分析仪(无源测试仪)
2. Network analyzer-8960/LTE CMW500/8820 支持 2G、3G、4G、5G 网络. (有源测试仪)

一、项目概况：

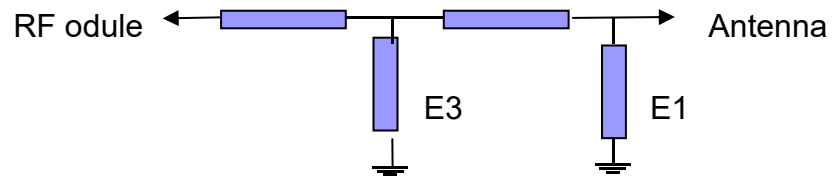
| | | | | |
|------------------|---|-------------|-------------|---|
| 客户名称 | 卓信特 | 项目名称 | Z5539 | |
| 整机类型 | 手机 | | | |
| 天线种类及频段信息 | | 天线形式 | 匹配改动 | |
| 主天线 | 2G: 850/900/1800/1900, 3G: B2/B4/B5 FDD:B2/4/5/12/13/17/25/26/66 /71 TDD:B41 | | PIFA | 否 |
| 副天线 | WIFI+GPS+BT | | PIFA | 否 |
| 分集天线 | 有 | | PIFA | 否 |
| 天线材质 | 主天线 FPC; 副天线 FPC | | | |

二、匹配修改 (主馈电路)

1、主天线 下天线 SUB 小板端 主馈电路

| 位号 | 原始匹配值 | 更换后匹配值 |
|---------|-------|--------|
| SC3 | | NC |
| SR1 | | 0Ω |
| SC2 | | NC |
| SR12 | | 0Ω |
| ESD6006 | | NC |

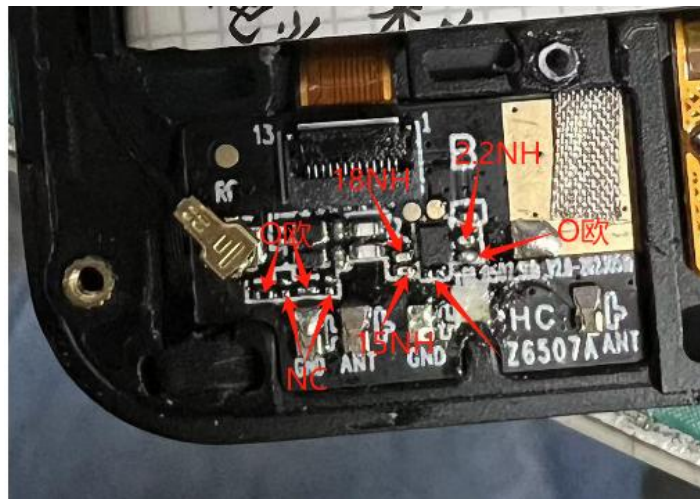
2、分集天线 上天线 主板端 主馈电路



| 位号 | 原始匹配值 | 更换后匹配值 |
|----------|-------|--------|
| E1(0402) | NC | |
| E2(0402) | 0Ω | |
| E3(0402) | NC | |
| E4(0402) | 0Ω | |

三、匹配修改 (调谐匹配) SUB 小板端 调谐电路

| 位号 | 原始匹配值 | 更换后匹配值 | 频段分配 |
|-----|-------|--------|--|
| RF1 | | 0 欧姆 | GSM900/1800/1900,WCDMA-B2/B4,LTE-B2/4/25/41/66 |
| RF2 | | 2.2NH | GSM850 WCDMA-B5 LTE-B5/26 |
| RF3 | | 15NH | LTE-B12/13/17 |
| RF4 | | 18NH | LTE-B71 |



四、环境处理



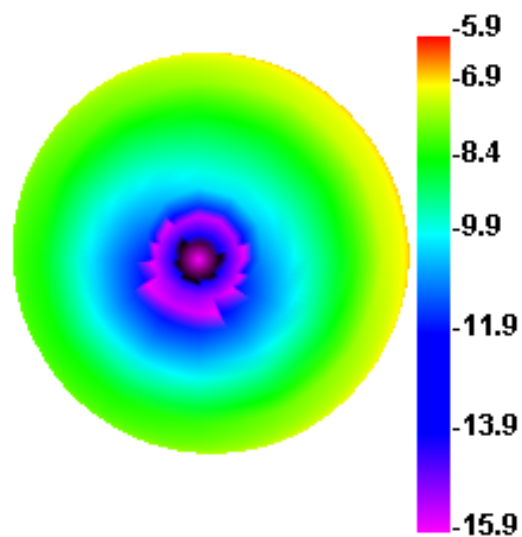
喇叭贴导电布接地，小板漏铜区贴导电泡棉接地，马达接地，屏的 FPC 贴导电布屏蔽

五、天线增益

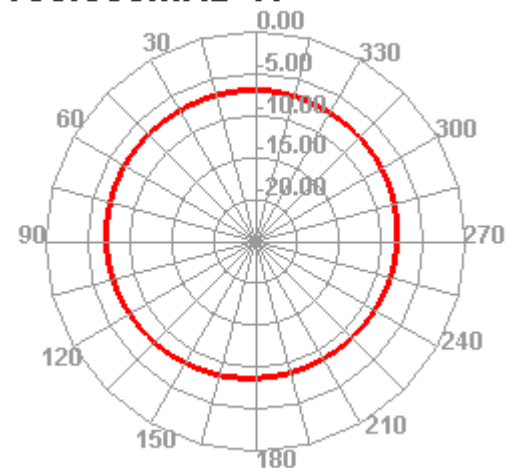
| Band | Gain |
|-------------|------|
| GSM850 | 0.42 |
| EGSM900 | 0.63 |
| DCS1800 | 0.81 |
| PCS1900 | 0.52 |
| WCDMA Band2 | 0.52 |
| WCDMA Band4 | 0.75 |
| WCDMA Band5 | 0.42 |
| B2 | 0.52 |
| B4 | 0.81 |
| B5 | 0.42 |
| B12 13 | 0.41 |
| B17 | 0.41 |
| B66 | 0.81 |
| B71 | 0.33 |
| B25 | 0.81 |
| B26 | 0.42 |
| B41 | 1.12 |
| GPS | 1.28 |
| WIFI | 1.11 |
| BT | 1.11 |

Efficient (617-697.9Hz)

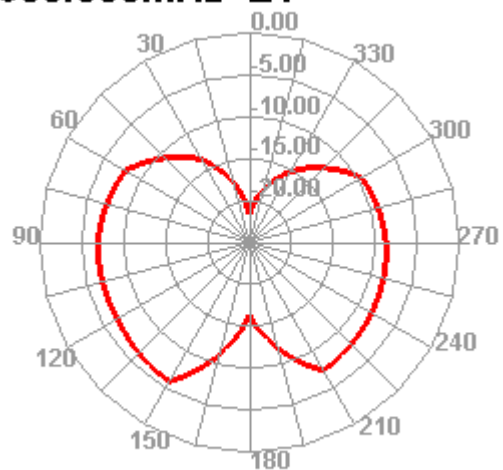
650.000MHz



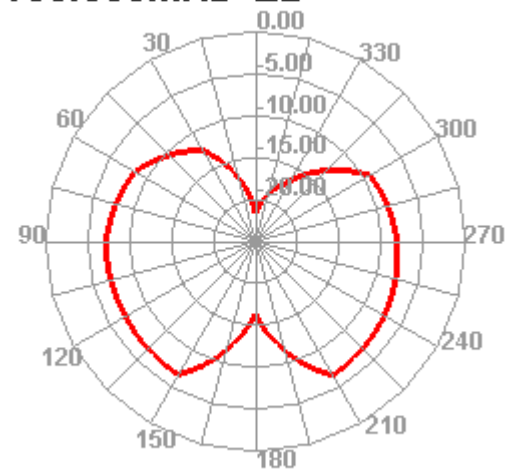
650.000MHz H



650.000MHz E1

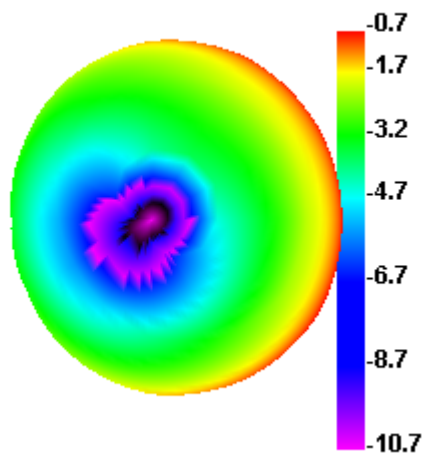


650.000MHz E2

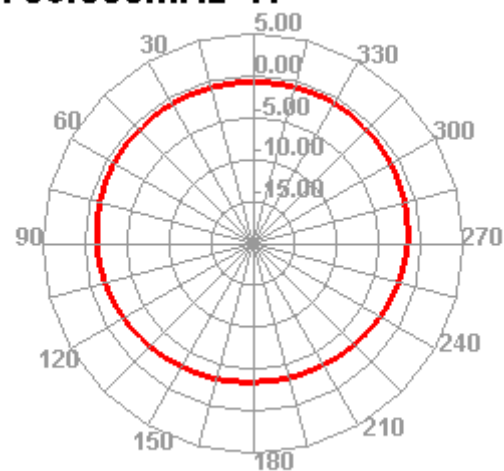


Efficient (698-798MHz)

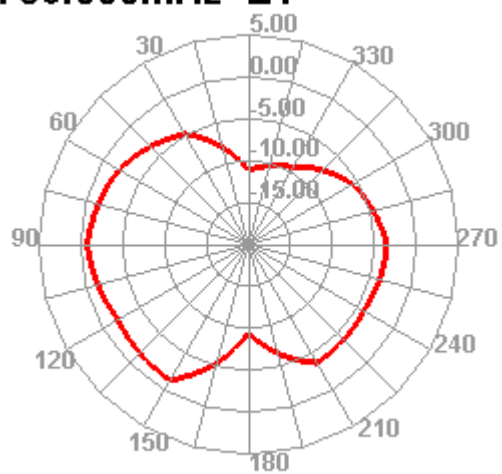
736.000MHz



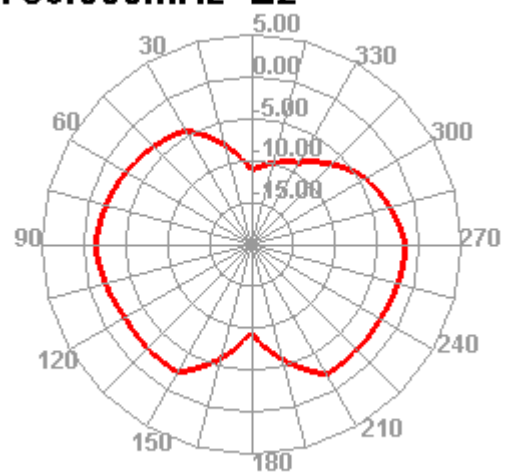
736.000MHz H



736.000MHz E1

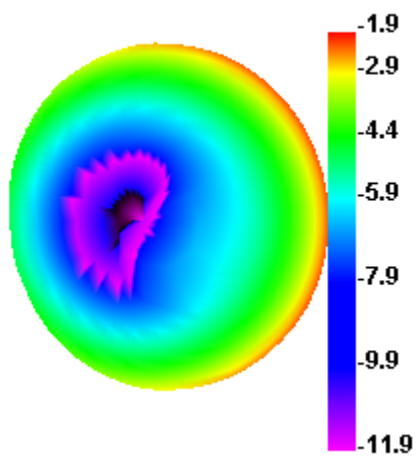


736.000MHz E2

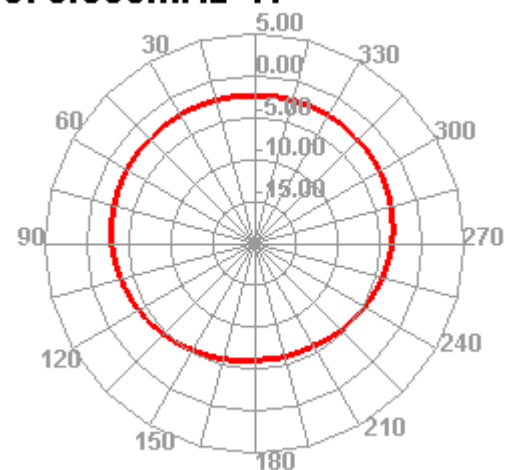


Efficient (791-894MHz)

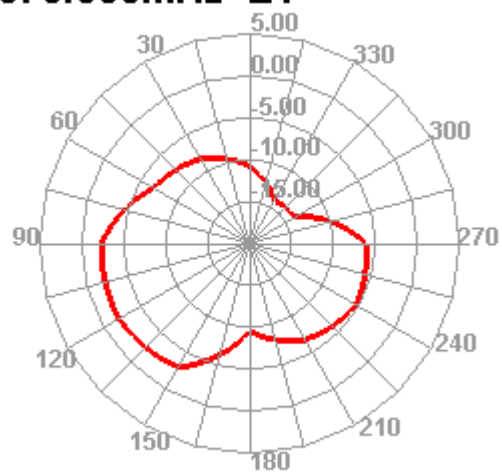
870.000MHz



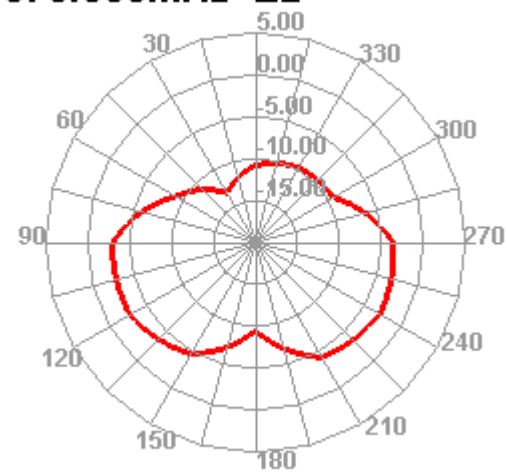
870.000MHz H



870.000MHz E1

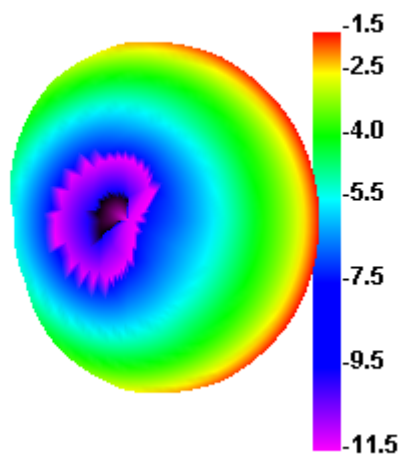


870.000MHz E2

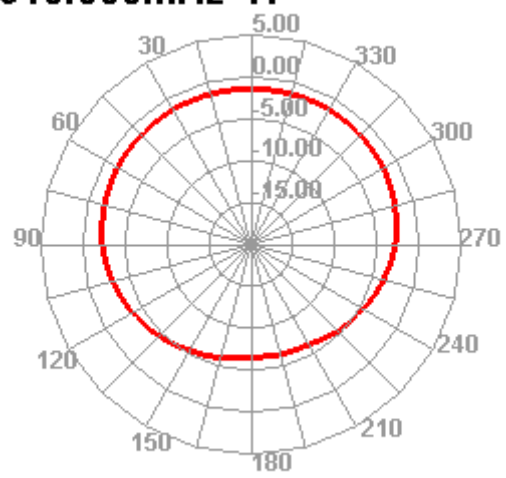


Efficient (880-960MHz)

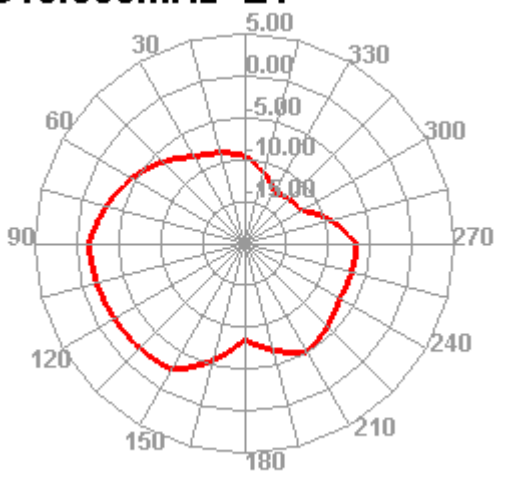
910.000MHz



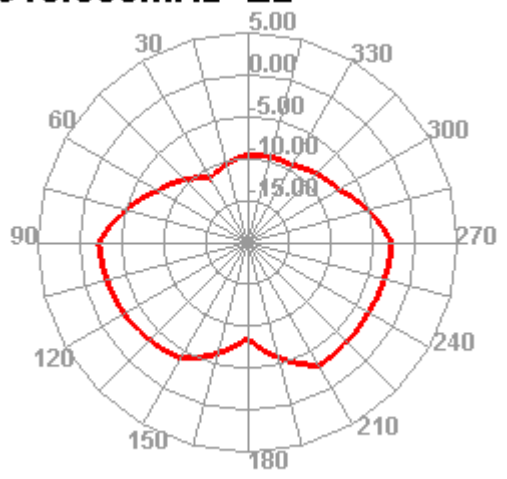
910.000MHz H



910.000MHz E1

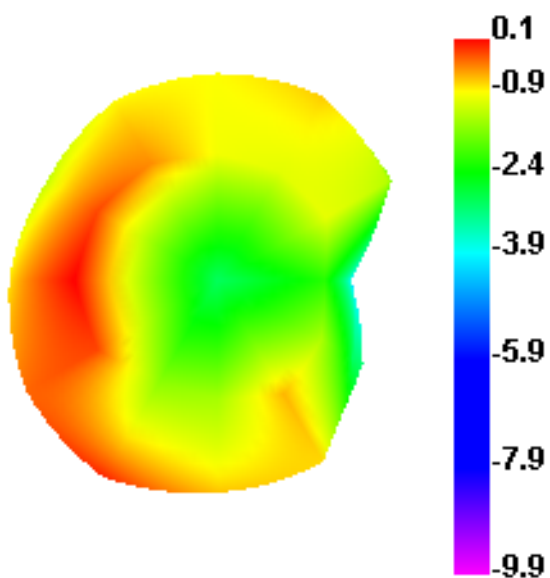


910.000MHz E2

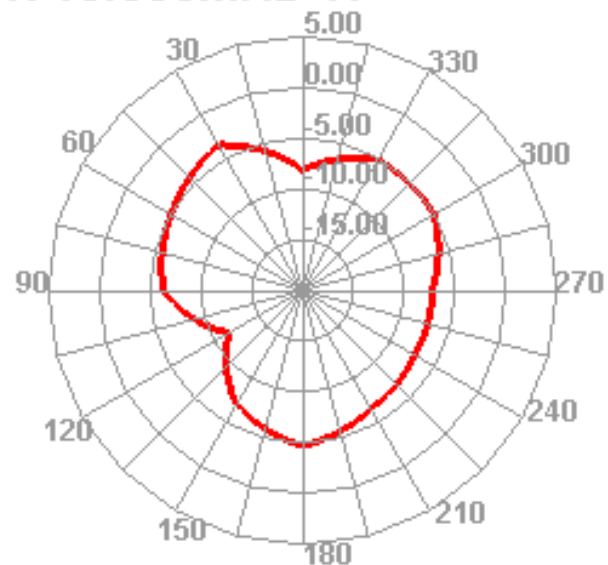


Efficient (1710–1880MHz)

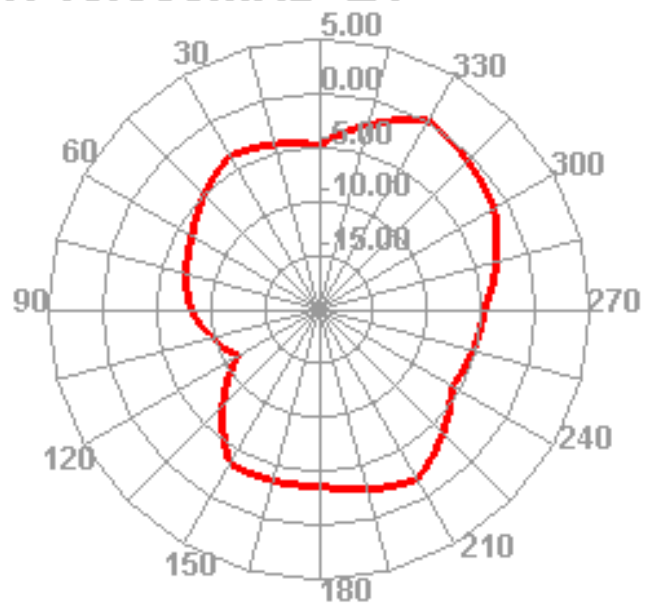
1710.000MHz



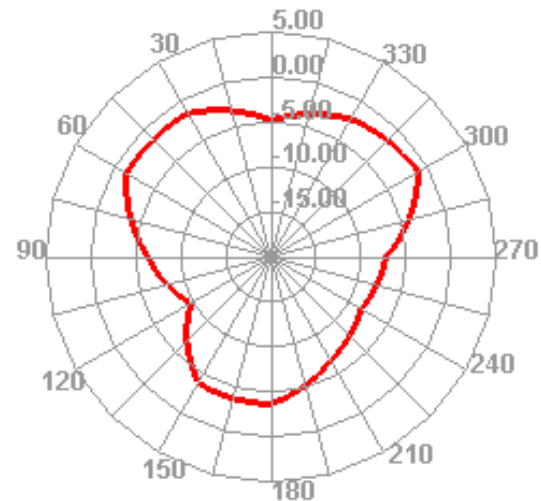
1710.000MHz H



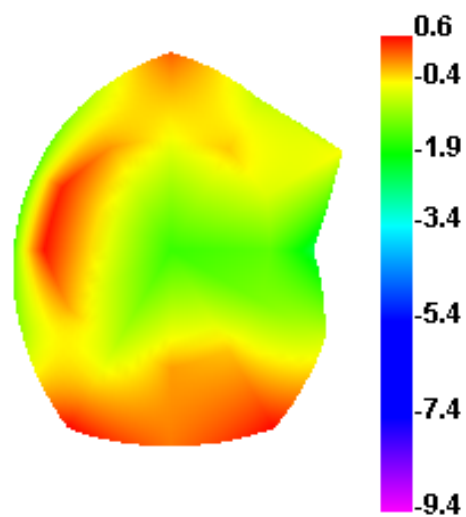
1710.000MHz E1



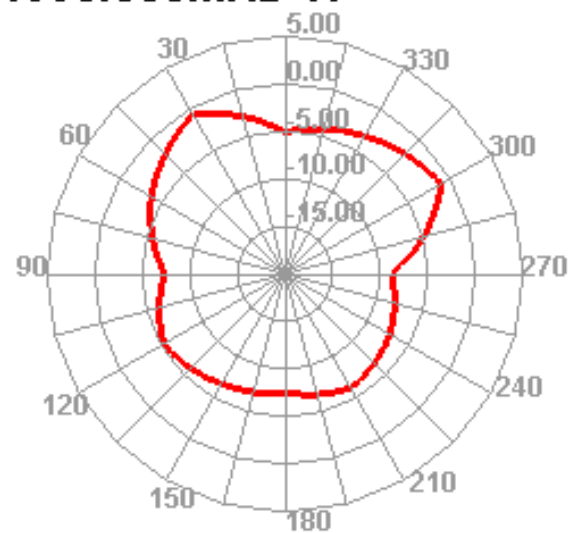
1710.000MHz E2



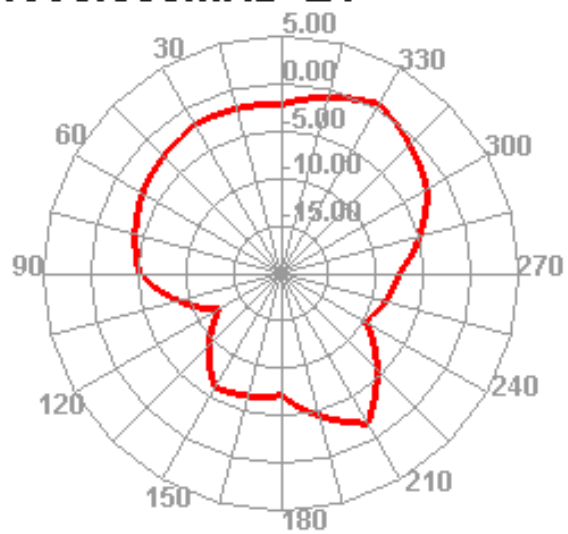
1990.000MHz



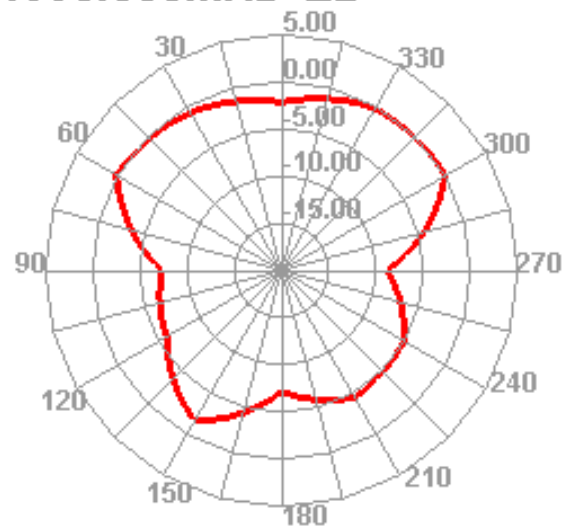
1990.000MHz H



1990.000MHz E1

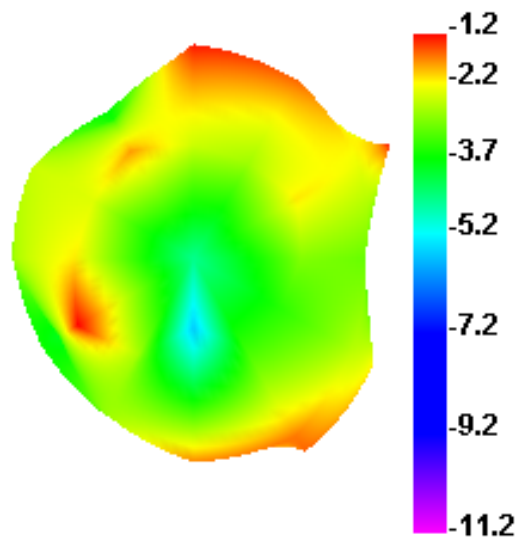


1990.000MHz E2

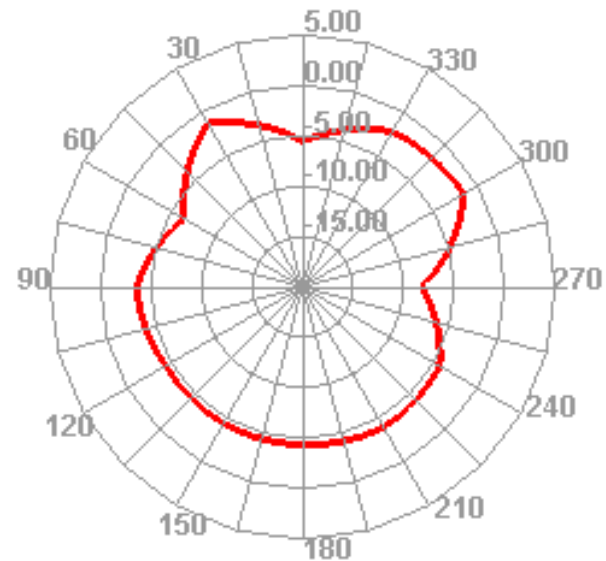


Efficient (1920-2170MHz)

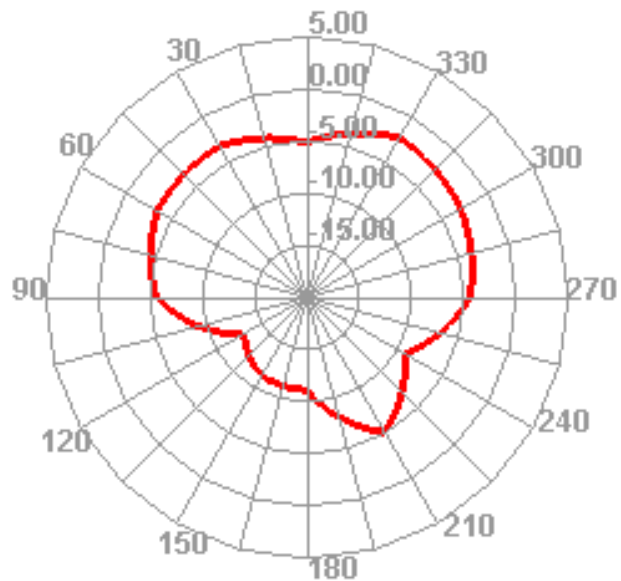
2170.000MHz



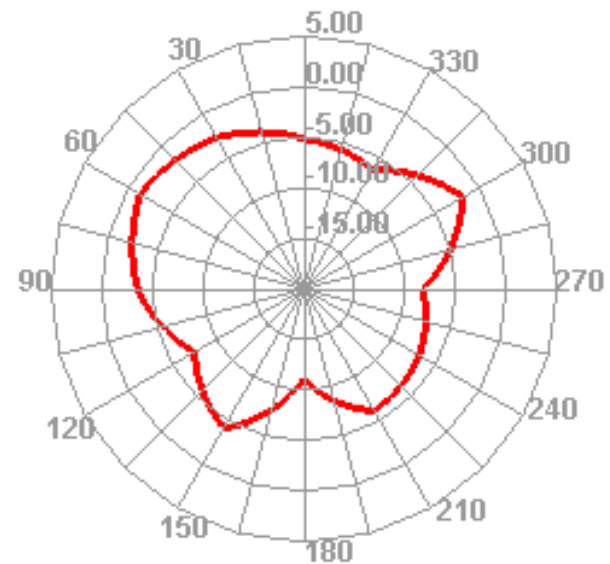
2170.000MHz H



2170.000MHz E1

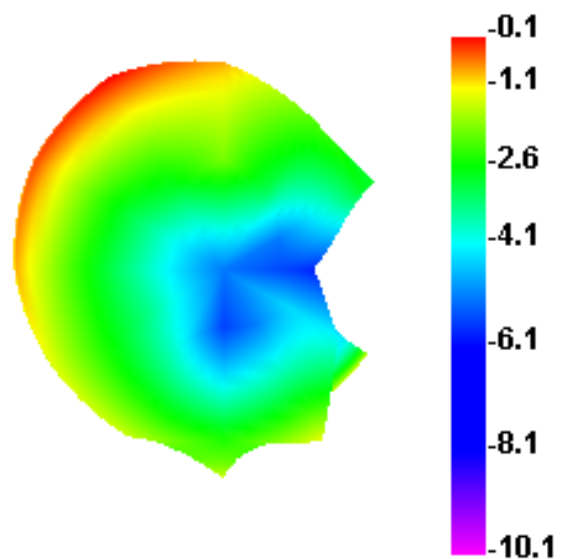


2170.000MHz E2

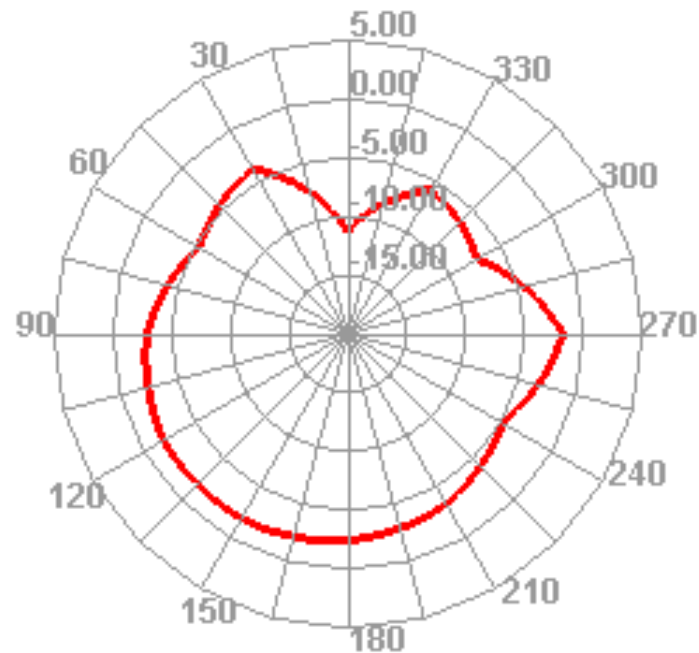


Efficient (2300-2500MHz)

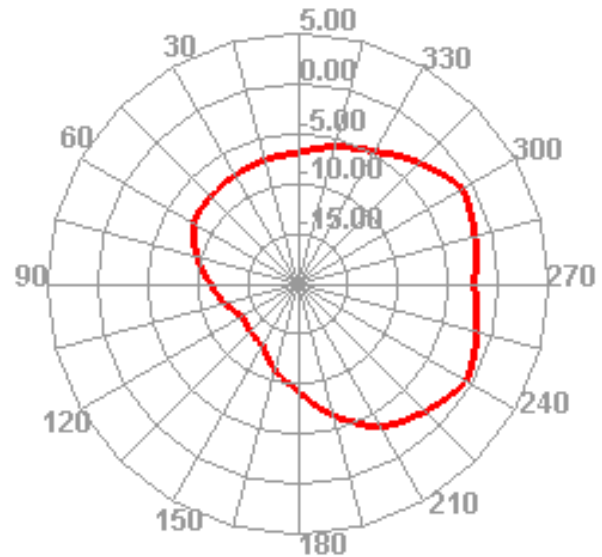
2500.000MHz



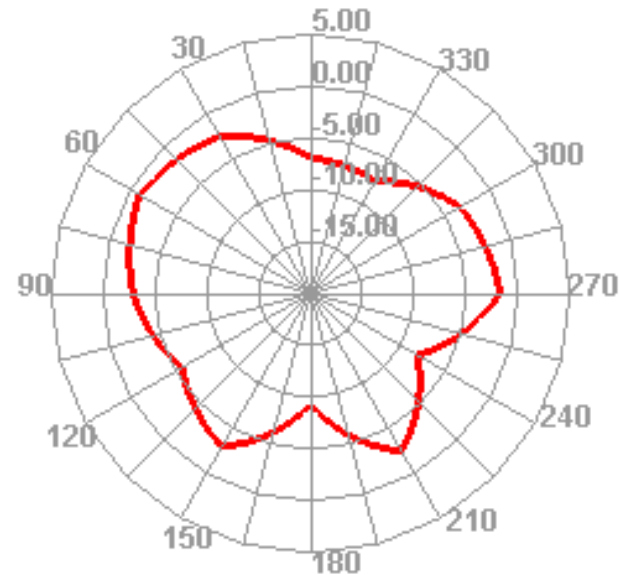
2500.000MHz H



2500.000MHz E1

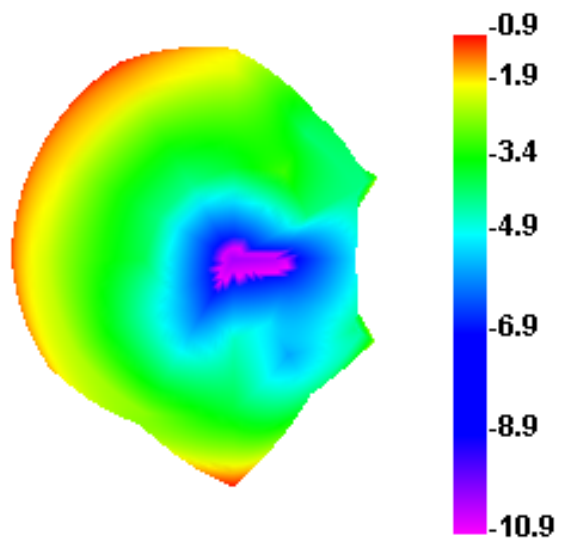


2500.000MHz E2

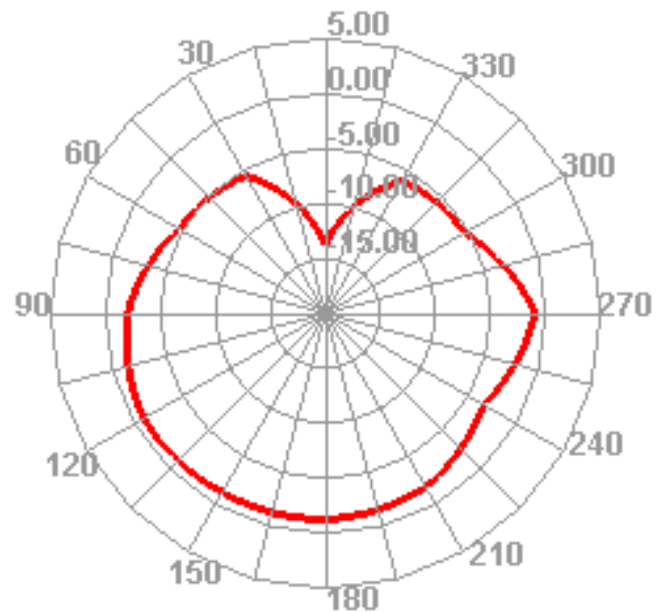


Efficient (2500–2690MHz)

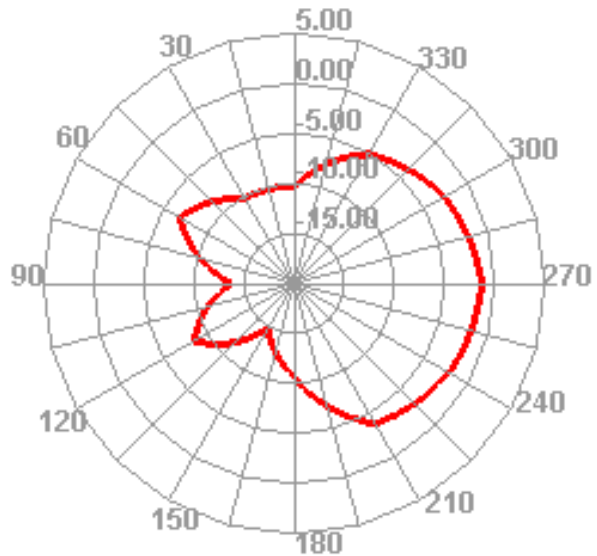
2690.000MHz



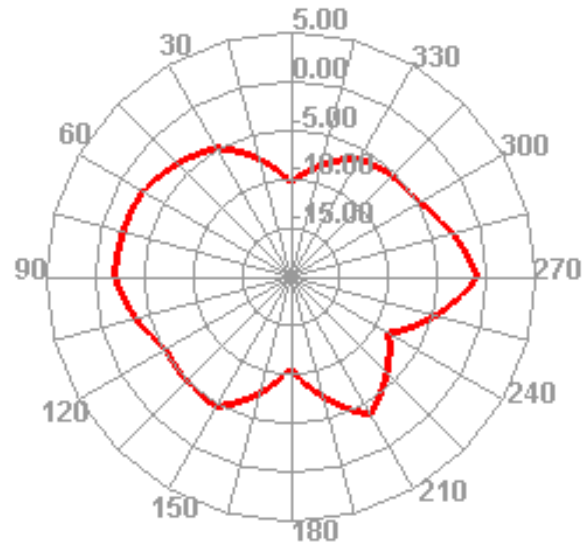
2690.000MHz H



2690.000MHz E1

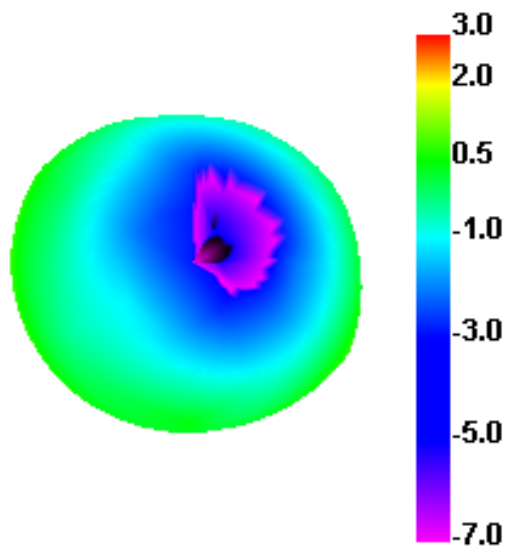


2690.000MHz E2

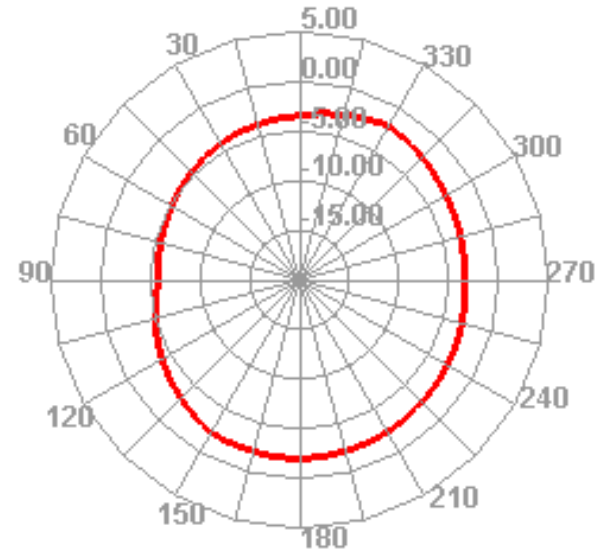


Efficient (2.4G-WIFI/BT 2400-2500MHz)

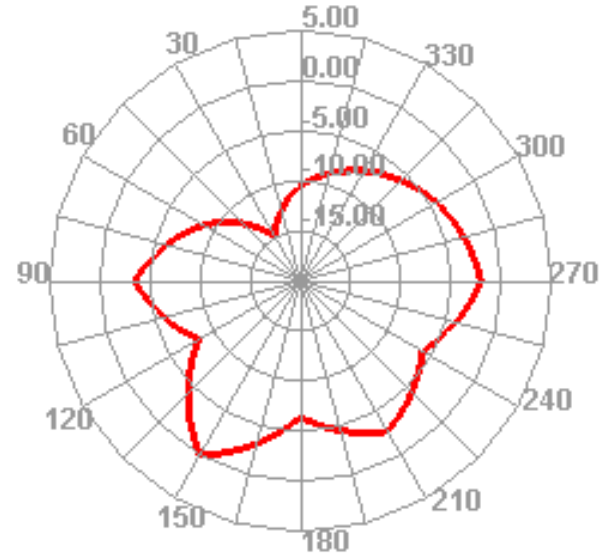
2450.000MHz



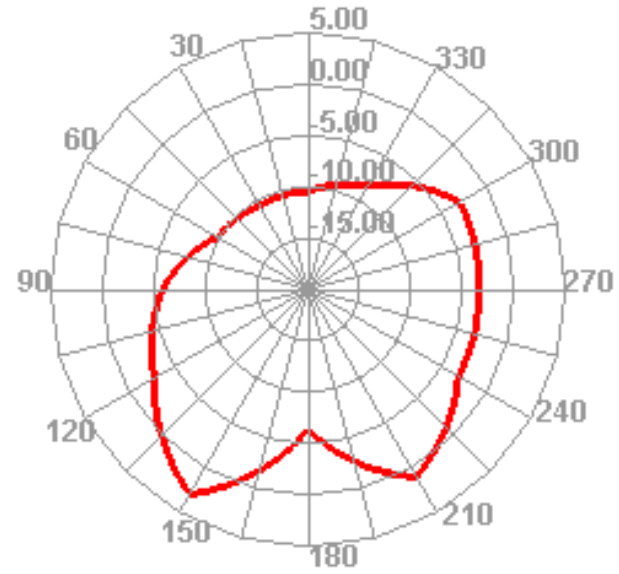
2450.000MHz H



2450.000MHz E1

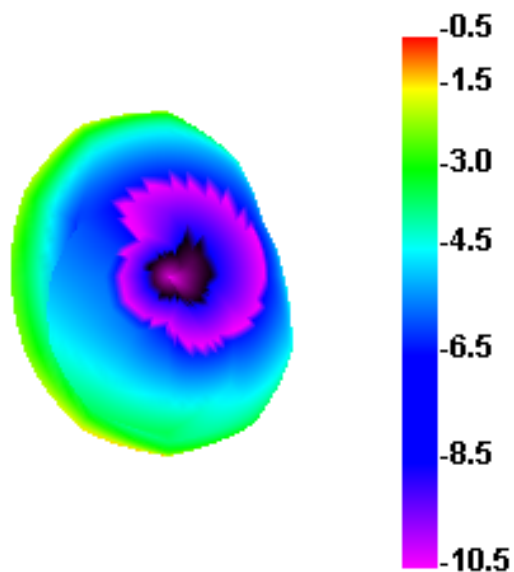


2450.000MHz E2

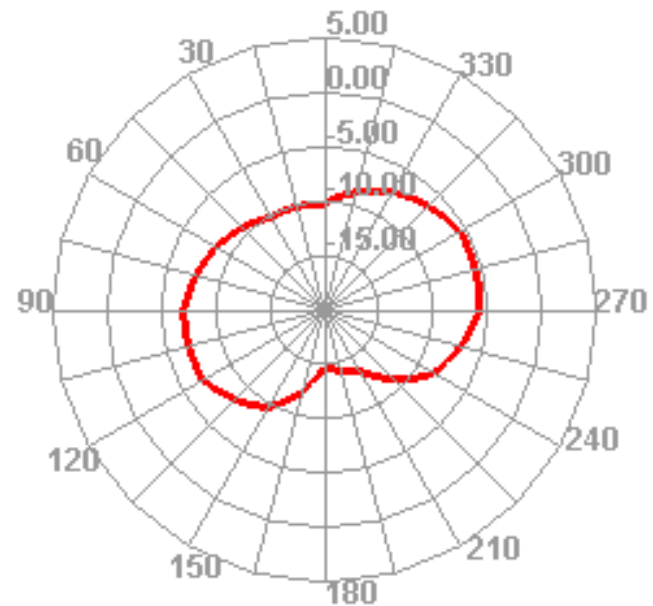


Efficient (GPS 1575.42MHz)

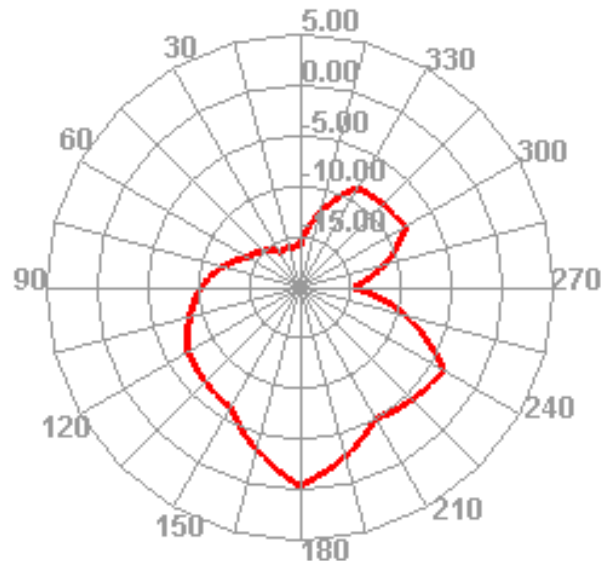
1575.000MHz



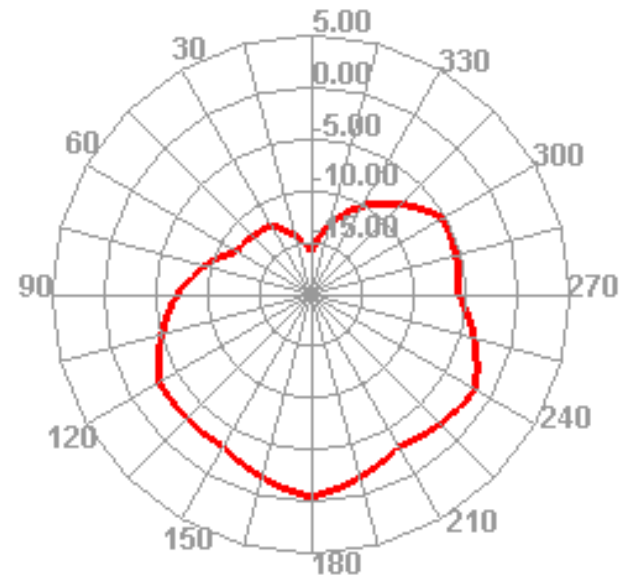
1575.000MHz H



1575.000MHz E1

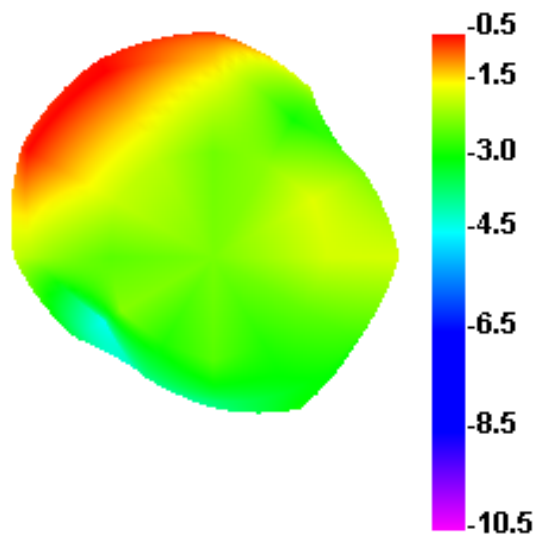


1575.000MHz E2

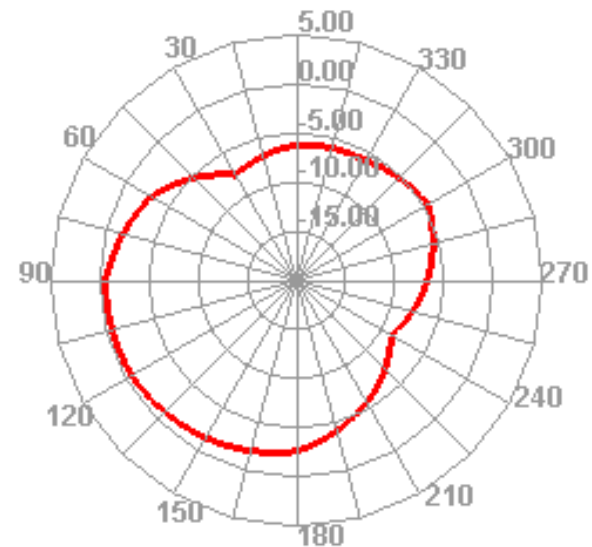


Efficient (5.8G-WIFI 5100-5800MHz)

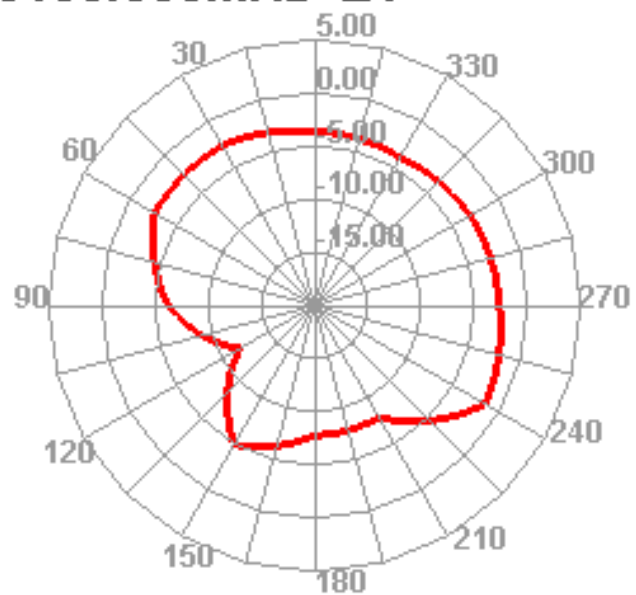
5150.000MHz



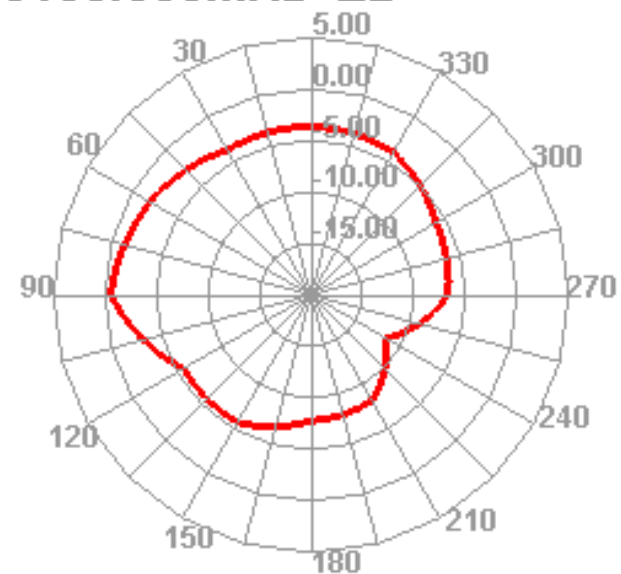
5150.000MHz H



5150.000MHz E1



5150.000MHz E2



联系方式

射频：王志彬

电话：13427944247（微信同号）

QQ：294914276

邮箱：294914276@qq.com

地址：深圳市南山区西丽大学城民企科技园二栋西座 403

时间：2023.12.26