



REPORT No.: SZ23080057S01

Annex C Plots of System Performance Check

System Check_750MHz_Head

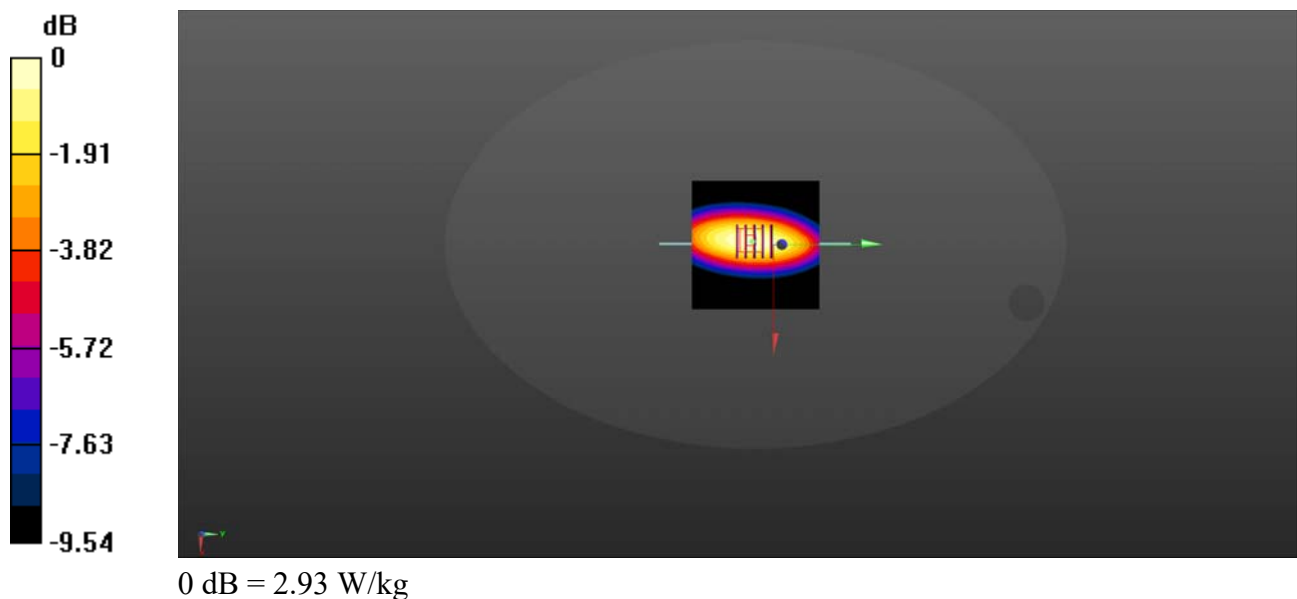
Communication System: UID 0, CW (0); Frequency: 750 MHz; Duty Cycle: 1:1
Medium: HSL_750 Medium parameters used: $f = 750$ MHz; $\sigma = 0.925$ S/m; $\epsilon_r = 42.483$; $\rho = 1000$ kg/m³
Ambient Temperature : 23.2 °C; Liquid Temperature : 22.5 °C

DASY5 Configuration:

- Probe: EX3DV4 - SN7608; ConvF(10.45, 10.45, 10.45) @ 750 MHz; Calibrated: 2023.03.15
- Sensor-Surface: 2mm (Mechanical Surface Detection)
- Electronics: DAE4 Sn1643; Calibrated: 2023.02.22
- Phantom: ELI V8.0 (20deg probe tilt); Type: QD OVA 004 Ax; Serial: xxxx
- Measurement SW: DASY52, Version 52.10 (4); SEMCAD X Version 14.6.14 (7483)

CW750/Area Scan (81x81x1): Interpolated grid: dx=1.500 mm, dy=1.500 mm
Maximum value of SAR (interpolated) = 2.93 W/kg

CW750/Zoom Scan (5x5x7)/Cube 0: Measurement grid: dx=8mm, dy=8mm, dz=5mm
Reference Value = 50.71 V/m; Power Drift = 0.06 dB
Peak SAR (extrapolated) = 3.53 W/kg
SAR(1 g) = 2.26 W/kg; SAR(10 g) = 1.5; W/kg
Maximum value of SAR (measured) = 2.97 W/kg



System Check_900MHz_Head

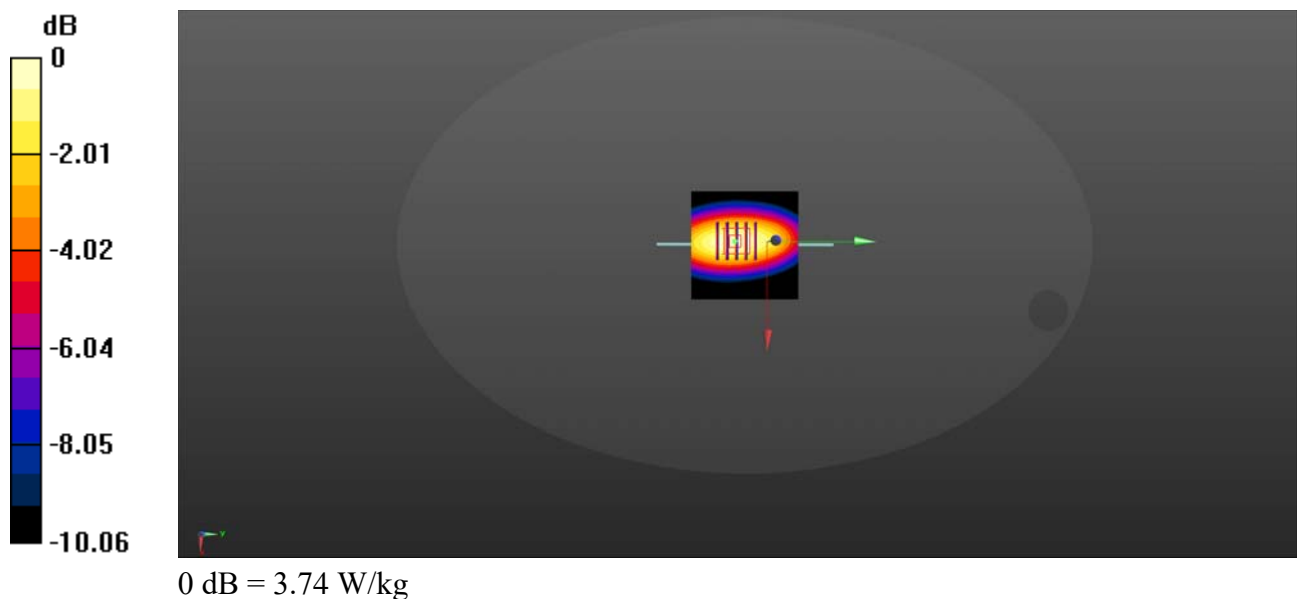
Communication System: UID 0, CW (0); Frequency: 900 MHz; Duty Cycle: 1:1
Medium: HSL_900 Medium parameters used: $f = 900$ MHz; $\sigma = 0.959$ S/m; $\epsilon_r = 39$; $\rho = 1000$ kg/m³
Ambient Temperature : 23.2 °C; Liquid Temperature : 22.4 °C

DASY5 Configuration:

- Probe: EX3DV4 - SN7608; ConvF(10, 10, 10) @ 900 MHz; Calibrated: 2023.03.15
- Sensor-Surface: 2mm (Mechanical Surface Detection)
- Electronics: DAE4 Sn1643; Calibrated: 2023.02.22
- Phantom: ELI V8.0 (20deg probe tilt); Type: QD OVA 004 Ax; Serial: xxxx
- Measurement SW: DASY52, Version 52.10 (4); SEMCAD X Version 14.6.14 (7483)

CW900/Area Scan (61x61x1): Interpolated grid: dx=1.500 mm, dy=1.500 mm
Maximum value of SAR (interpolated) = 3.74 W/kg

CW900/Zoom Scan (5x5x7)/Cube 0: Measurement grid: dx=8mm, dy=8mm, dz=5mm
Reference Value = 55.29 V/m; Power Drift = -0.07 dB
Peak SAR (extrapolated) = 4.40 W/kg
SAR(1 g) = 2.95 W/kg; SAR(10 g) = 1.97 W/kg
Maximum value of SAR (measured) = 3.70 W/kg



System Check_900MHz_Head

Communication System: UID 0, CW (0); Frequency: 900 MHz; Duty Cycle: 1:1

Medium: HSL_900 Medium parameters used: $f = 900$ MHz; $\sigma = 0.963$ S/m; $\epsilon_r = 5$; $\rho = 1000$ kg/m³

Ambient Temperature : 23.2 °C; Liquid Temperature : 22.7 °C

DASY5 Configuration:

- Probe: EX3DV4 - SN7608; ConvF(10, 10, 10) @ 900 MHz; Calibrated: 2023.03.15
- Sensor-Surface: 2mm (Mechanical Surface Detection)
- Electronics: DAE4 Sn1643; Calibrated: 2023.02.22
- Phantom: ELI V8.0 (20deg probe tilt); Type: QD OVA 004 Ax; Serial: xxxx
- Measurement SW: DASY52, Version 52.10 (4); SEMCAD X Version 14.6.14 (7483)

CW900/Area Scan (61x61x1): Interpolated grid: dx=1.500 mm, dy=1.500 mm

Maximum value of SAR (interpolated) = 4.21 W/kg

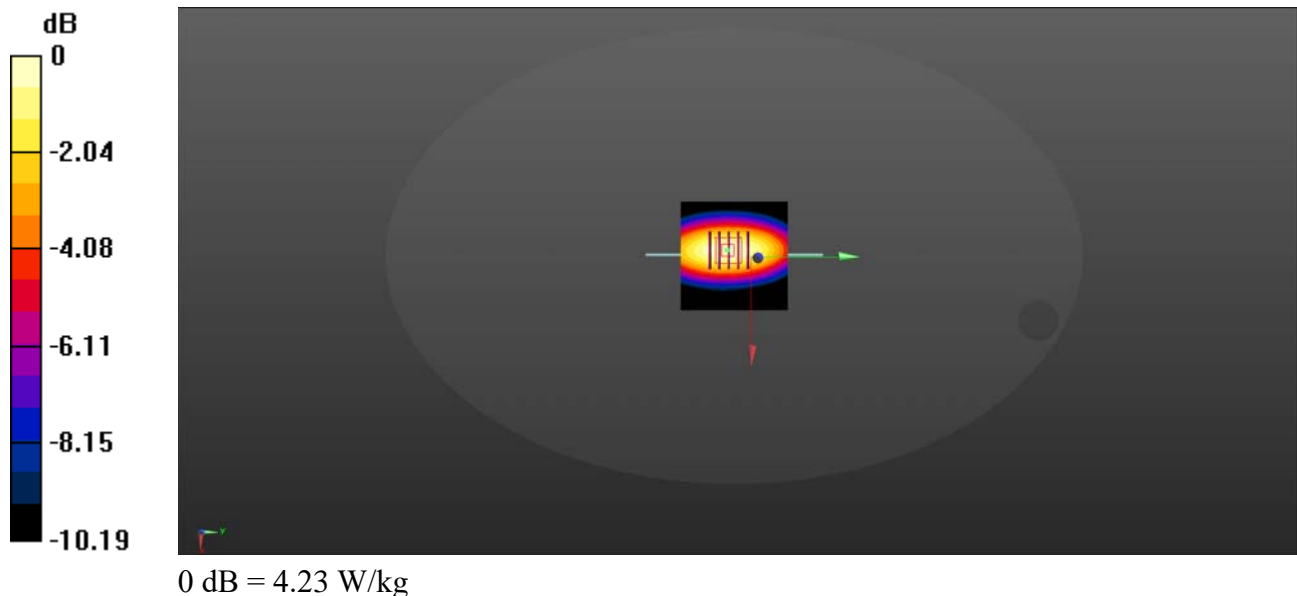
CW900/Zoom Scan (5x5x7)/Cube 0: Measurement grid: dx=8mm, dy=8mm, dz=5mm

Reference Value = 60.44 V/m; Power Drift = -0.04 dB

Peak SAR (extrapolated) = 4.85 W/kg

SAR(1 g) = 4.98 W/kg; SAR(10 g) = 3.: 3 W/kg

Maximum value of SAR (measured) = 4.11 W/kg



System Check_1800MHz_Head

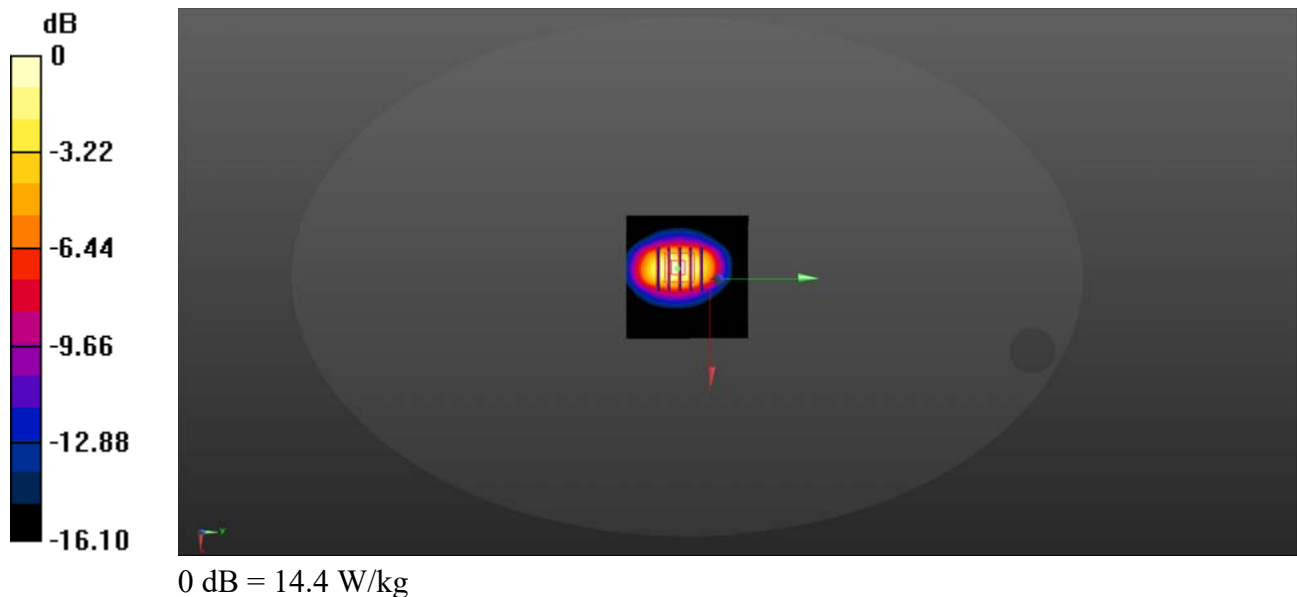
Communication System: UID 0, CW (0); Frequency: 1800 MHz; Duty Cycle: 1:1
Medium: HSL_1800 Medium parameters used: $f = 1800$ MHz; $\sigma = 1.334$ S/m; $\epsilon_r = 39.568$; $\rho = 1000$ kg/m³
Ambient Temperature : 23.2 °C; Liquid Temperature : 22.2 °C

DASY5 Configuration:

- Probe: EX3DV4 - SN7608; ConvF(8.4, 8.4, 8.4) @ 1800 MHz; Calibrated: 2023.03.15
- Sensor-Surface: 2mm (Mechanical Surface Detection)
- Electronics: DAE4 Sn1643; Calibrated: 2023.02.22
- Phantom: ELI V8.0 (20deg probe tilt); Type: QD OVA 004 Ax; Serial: xxxx
- Measurement SW: DASY52, Version 52.10 (4); SEMCAD X Version 14.6.14 (7483)

CW1800/Area Scan (61x61x1): Interpolated grid: dx=1.500 mm, dy=1.500 mm
Maximum value of SAR (interpolated) = 14.4 W/kg

CW1800/Zoom Scan (5x5x7)/Cube 0: Measurement grid: dx=8mm, dy=8mm, dz=5mm
Reference Value = 74.61 V/m; Power Drift = 0.10 dB
Peak SAR (extrapolated) = 17.4 W/kg
SAR(1 g) = 10.34 W/kg; SAR(10 g) = 5.32 W/kg
Maximum value of SAR (measured) = 13.9 W/kg



System Check_1800MHz

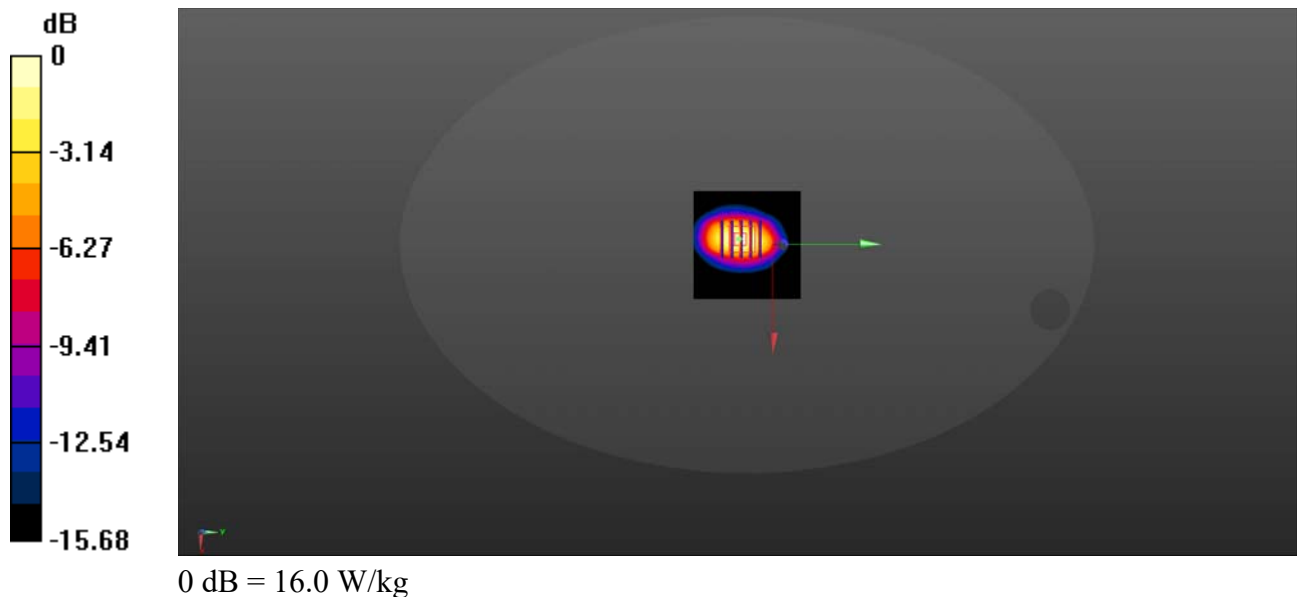
Communication System: UID 0, CW (0); Frequency: 1800 MHz; Duty Cycle: 1:1
Medium: HSL_1800 Medium parameters used: $f = 1800$ MHz; $\sigma = 1.398$ S/m; $\epsilon_r = 3$; $\rho = 1000$ kg/m³
Ambient Temperature : 23.2 °C; Liquid Temperature : 22.6 °C

DASY5 Configuration:

- Probe: EX3DV4 - SN7608; ConvF(8.4, 8.4, 8.4) @ 1800 MHz; Calibrated: 2023.03.15
- Sensor-Surface: 2mm (Mechanical Surface Detection)
- Electronics: DAE4 Sn1643; Calibrated: 2023.02.22
- Phantom: ELI V8.0 (20deg probe tilt); Type: QD OVA 004 Ax; Serial: xxxx
- Measurement SW: DASY52, Version 52.10 (4); SEMCAD X Version 14.6.14 (7483)

CW1800/Area Scan (61x61x1): Interpolated grid: dx=1.500 mm, dy=1.500 mm
Maximum value of SAR (interpolated) = 16.0 W/kg

CW1800/Zoom Scan (5x5x7)/Cube 0: Measurement grid: dx=8mm, dy=8mm, dz=5mm
Reference Value = 89.00 V/m; Power Drift = -0.31 dB
Peak SAR (extrapolated) = 19.6 W/kg
SAR(1 g) = 64 W/kg; SAR(10 g) = 7.05 W/kg
Maximum value of SAR (measured) = 15.6 W/kg



System Check_2000MHz_Head

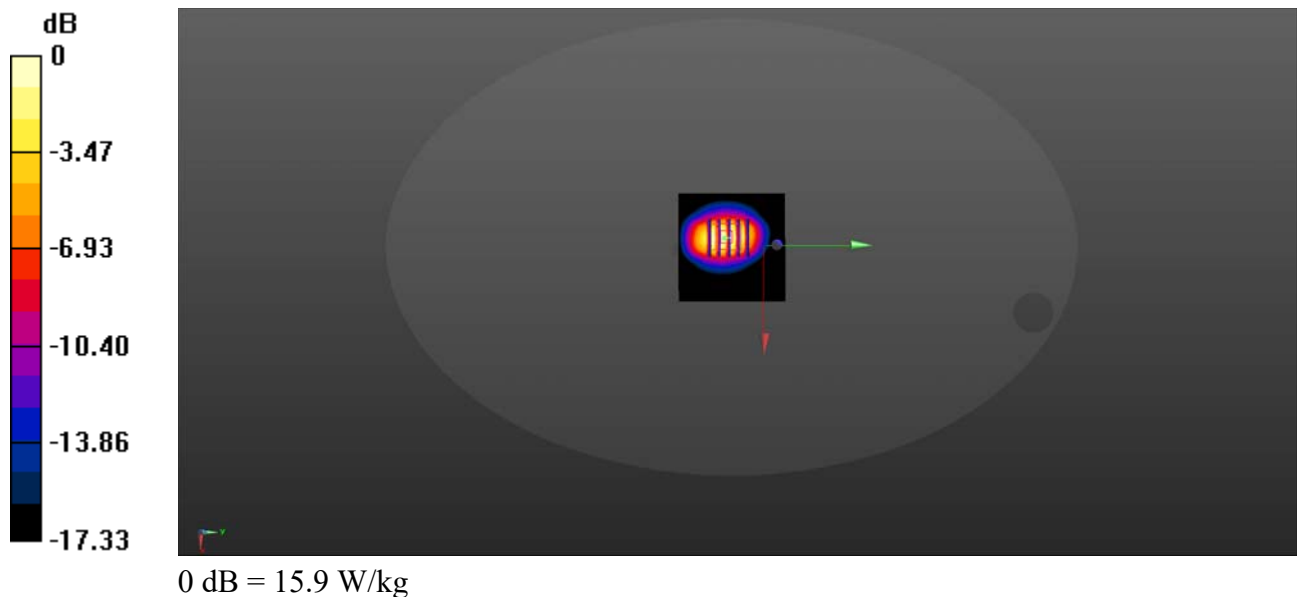
Communication System: UID 0, CW (0); Frequency: 2000 MHz; Duty Cycle: 1:1
Medium: HSL_2000 Medium parameters used: $f = 2000$ MHz; $\sigma = 1.394$ S/m; $\epsilon_r = 38.767$; $\rho = 1000$ kg/m³
Ambient Temperature : 23.2 °C; Liquid Temperature : 22.4 °C

DASY5 Configuration:

- Probe: EX3DV4 - SN7608; ConvF(8.13, 8.13, 8.13) @ 2000 MHz; Calibrated: 2023.03.15
- Sensor-Surface: 2mm (Mechanical Surface Detection)
- Electronics: DAE4 Sn1643; Calibrated: 2023.02.22
- Phantom: ELI V8.0 (20deg probe tilt); Type: QD OVA 004 Ax; Serial: xxxx
- Measurement SW: DASY52, Version 52.10 (4); SEMCAD X Version 14.6.14 (7483)

CW2000/Area Scan (61x61x1): Interpolated grid: dx=1.500 mm, dy=1.500 mm
Maximum value of SAR (interpolated) = 15.9 W/kg

CW2000/Zoom Scan (5x5x7)/Cube 0: Measurement grid: dx=8mm, dy=8mm, dz=5mm
Reference Value = 72.69 V/m; Power Drift = -0.11 dB
Peak SAR (extrapolated) = 18.8 W/kg
SAR(1 g) = 10.11 W/kg; SAR(10 g) = 5.18 W/kg
Maximum value of SAR (measured) = 15.1 W/kg



System Check_2450MHz

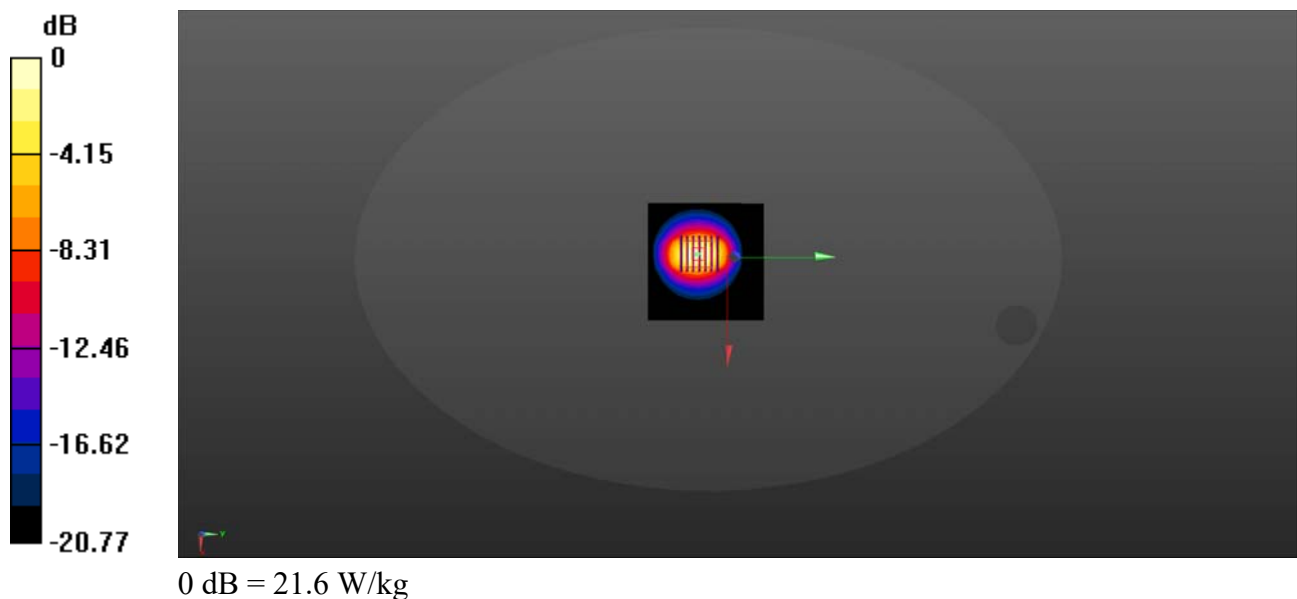
Communication System: UID 0, CW (0); Frequency: 2450 MHz; Duty Cycle: 1:1
Medium: HSL_2450 Medium parameters used: $f = 2450$ MHz; $\sigma = 1.713$ S/m; $\epsilon_r = 39.022$; $\rho = 1000$ kg/m³
Ambient Temperature : 23.2 °C; Liquid Temperature : 22.1 °C

DASY5 Configuration:

- Probe: EX3DV4 - SN7608; ConvF(7.6, 7.6, 7.6) @ 2450 MHz; Calibrated: 2023.03.15
- Sensor-Surface: 2mm (Mechanical Surface Detection)
- Electronics: DAE4 Sn1643; Calibrated: 2023.02.22
- Phantom: ELI V8.0 (20deg probe tilt); Type: QD OVA 004 Ax; Serial: xxxx
- Measurement SW: DASY52, Version 52.10 (4); SEMCAD X Version 14.6.14 (7483)

CW2450/Area Scan (81x81x1): Interpolated grid: dx=1.200 mm, dy=1.200 mm
Maximum value of SAR (interpolated) = 21.6 W/kg

CW2450/Zoom Scan (7x7x7)/Cube 0: Measurement grid: dx=5mm, dy=5mm, dz=5mm
Reference Value = 81.40 V/m; Power Drift = 0.09 dB
Peak SAR (extrapolated) = 28.4 W/kg
SAR(1 g) = 13.68 W/kg; SAR(10 g) = 5.92 W/kg
Maximum value of SAR (measured) = 21.5 W/kg



System Check_2600MHz_Head

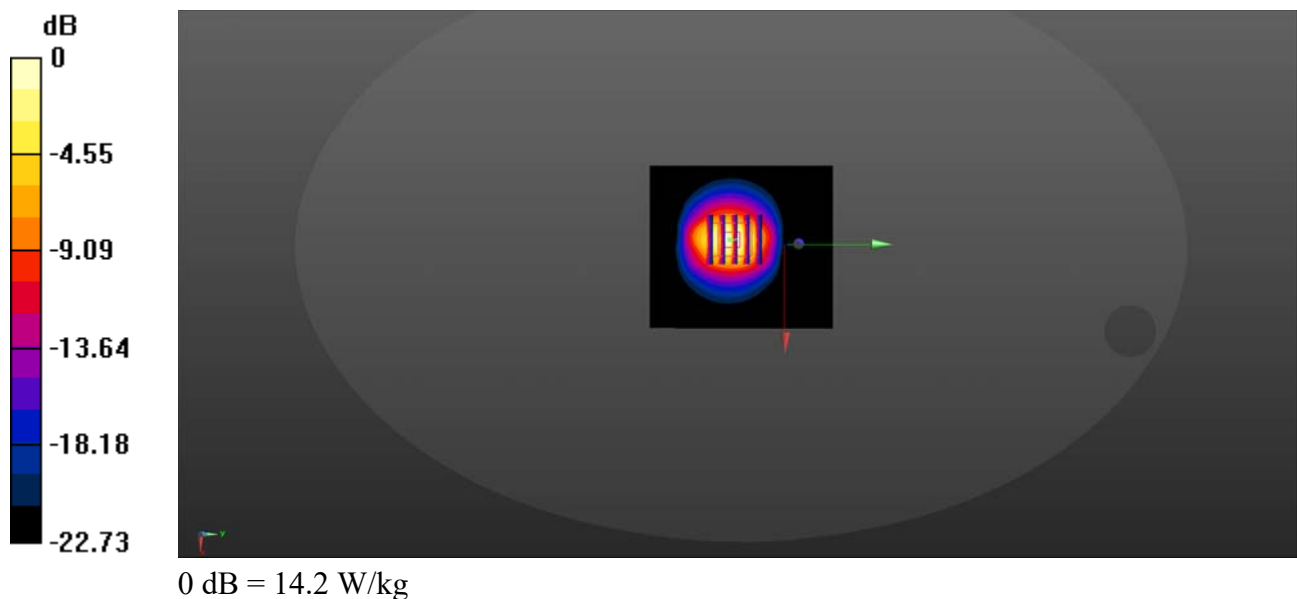
Communication System: UID 0, CW (0); Frequency: 2600 MHz; Duty Cycle: 1:1
Medium: HSL_2600 Medium parameters used: $f = 2600$ MHz; $\sigma = 1.891$ S/m; $\epsilon_r = 38.443$; $\rho = 1000$ kg/m³
Ambient Temperature : 23.2 °C; Liquid Temperature : 22.3 °C

DASY5 Configuration:

- Probe: EX3DV4 - SN7608; ConvF(7.34, 7.34, 7.34) @ 2600 MHz; Calibrated: 2023.03.15
- Sensor-Surface: 2mm (Mechanical Surface Detection)
- Electronics: DAE4 Sn1643; Calibrated: 2023.02.22
- Phantom: ELI V8.0 (20deg probe tilt); Type: QD OVA 004 Ax; Serial: xxxx
- Measurement SW: DASY52, Version 52.10 (4); SEMCAD X Version 14.6.14 (7483)

CW2600/Area Scan (71x81x1): Interpolated grid: dx=1.500 mm, dy=1.500 mm
Maximum value of SAR (interpolated) = 14.2 W/kg

CW2600/Zoom Scan (5x5x7)/Cube 0: Measurement grid: dx=8mm, dy=8mm, dz=5mm
Reference Value = 61.43 V/m; Power Drift = 0.06 dB
Peak SAR (extrapolated) = 17.1 W/kg
SAR(1 g) = 14.87 W/kg; SAR(10 g) = 6.31 W/kg
Maximum value of SAR (measured) = 12.9 W/kg



System Check_2600MHz_Head

Communication System: UID 0, CW (0); Frequency: 2600 MHz; Duty Cycle: 1:1

Medium: HSL_2600 Medium parameters used: $f = 2600$ MHz; $\sigma = 1.873$ S/m; $\epsilon_r = 39.038$; $\rho = 1000$ kg/m³

Ambient Temperature : 23.2 °C; Liquid Temperature : 22.4 °C

DASY5 Configuration:

- Probe: EX3DV4 - SN7608; ConvF(7.34, 7.34, 7.34) @ 2600 MHz; Calibrated: 2023.03.15
- Sensor-Surface: 2mm (Mechanical Surface Detection)
- Electronics: DAE4 Sn1643; Calibrated: 2023.02.22
- Phantom: ELI V8.0 (20deg probe tilt); Type: QD OVA 004 Ax; Serial: xxxx
- Measurement SW: DASY52, Version 52.10 (4); SEMCAD X Version 14.6.14 (7483)

CW2600/Area Scan (71x81x1): Interpolated grid: dx=1.500 mm, dy=1.500 mm

Maximum value of SAR (interpolated) = 14.08 W/kg

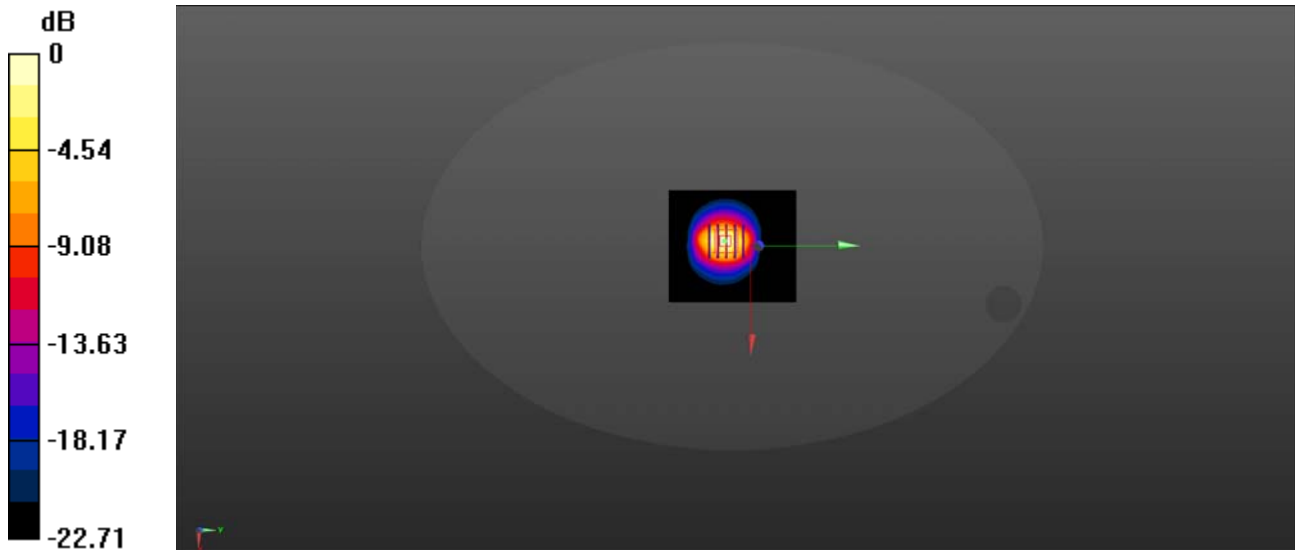
CW2600/Zoom Scan (5x5x7)/Cube 0: Measurement grid: dx=8mm, dy=8mm, dz=5mm

Reference Value = 61.38 V/m; Power Drift = 0.02 dB

Peak SAR (extrapolated) = 17.2 W/kg

SAR(1 g) = 14.93 W/kg; SAR(10 g) = 6.22 W/kg

Maximum value of SAR (measured) = 12.4 W/kg



0 dB = 14.08 W/kg

System Check_5250MHz_Head

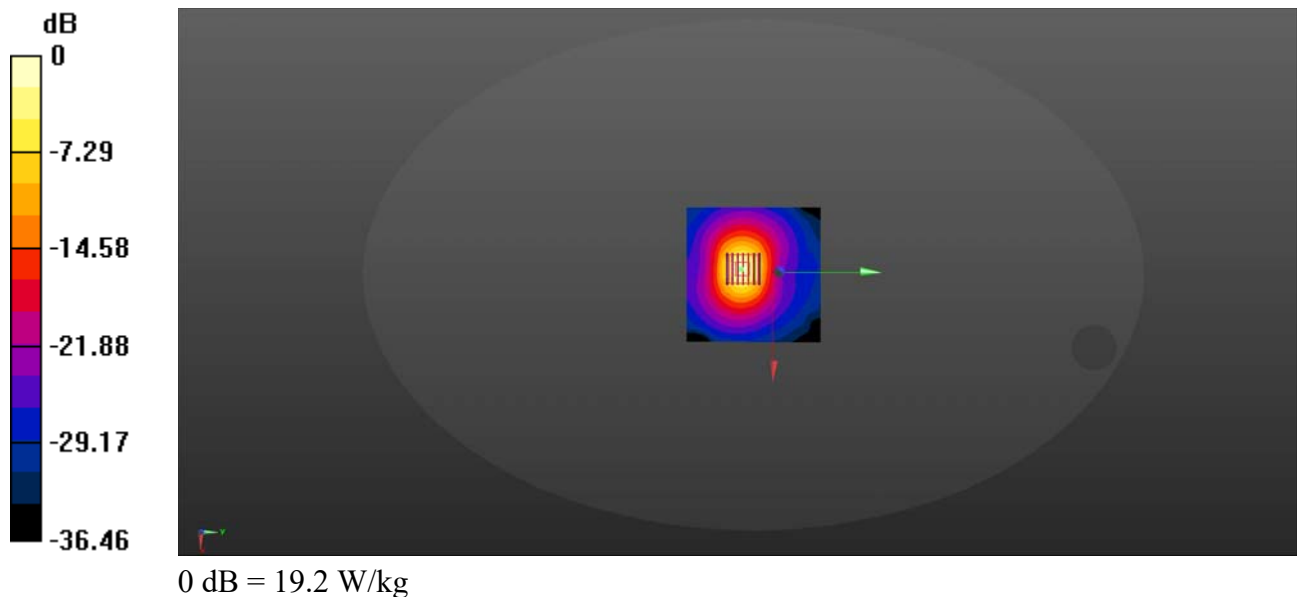
Communication System: UID 0, CW (0); Frequency: 5250 MHz; Duty Cycle: 1:1
Medium: HSL_5250 Medium parameters used: $f = 5250$ MHz; $\sigma = 4.803$ S/m; $\epsilon_r = 37.017$; $\rho = 1000$ kg/m³
Ambient Temperature : 23.2 °C; Liquid Temperature : 22.2 °C

DASY5 Configuration:

- Probe: EX3DV4 - SN7608; ConvF(5.35, 5.35, 5.35) @ 5250 MHz; Calibrated: 2023.03.15
- Sensor-Surface: 2mm (Mechanical Surface Detection)
- Electronics: DAE4 Sn1643; Calibrated: 2023.02.22
- Phantom: ELI V8.0 (20deg probe tilt); Type: QD OVA 004 Ax; Serial: xxxx
- Measurement SW: DASY52, Version 52.10 (4); SEMCAD X Version 14.6.14 (7483)

CW5250/Area Scan (101x101x1): Interpolated grid: dx=1.000 mm, dy=1.000 mm
Maximum value of SAR (interpolated) = 19.2 W/kg

CW5250/Zoom Scan (7x7x13)/Cube 0: Measurement grid: dx=4mm, dy=4mm, dz=2mm
Reference Value = 29.00 V/m; Power Drift = 0.07 dB
Peak SAR (extrapolated) = 37.4 W/kg
SAR(1 g) = 7.81 W/kg; SAR(10 g) = 2.23 W/kg
Maximum value of SAR (measured) = 20.5 W/kg



System Check_5600MHz_Head

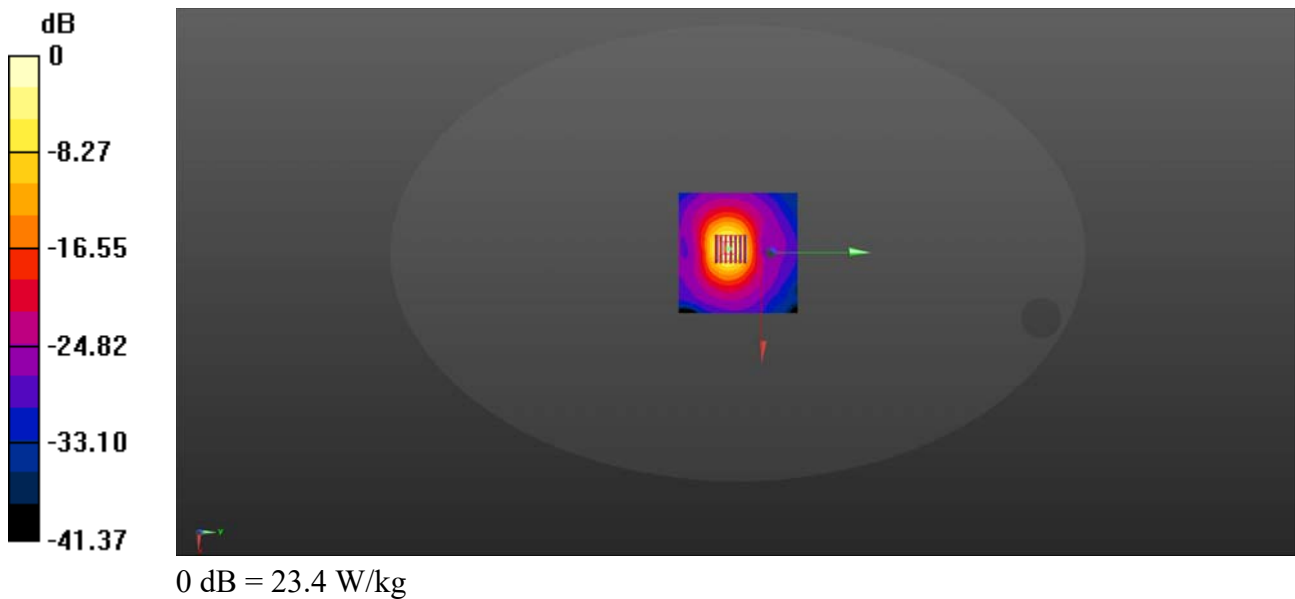
Communication System: UID 0, CW (0); Frequency: 5600 MHz; Duty Cycle: 1:1
Medium: HSL_5600 Medium parameters used: $f = 5600$ MHz; $\sigma = 5.106$ S/m; $\epsilon_r = 34.329$; $\rho = 1000$ kg/m³
Ambient Temperature : 23.2 °C; Liquid Temperature : 22.2 °C

DASY5 Configuration:

- Probe: EX3DV4 - SN7608; ConvF(4.8, 4.8, 4.8) @ 5600 MHz; Calibrated: 2023.03.15
- Sensor-Surface: 2mm (Mechanical Surface Detection)
- Electronics: DAE4 Sn1643; Calibrated: 2023.02.22
- Phantom: ELI V8.0 (20deg probe tilt); Type: QD OVA 004 Ax; Serial: xxxx
- Measurement SW: DASY52, Version 52.10 (4); SEMCAD X Version 14.6.14 (7483)

CW5600/Area Scan (101x101x1): Interpolated grid: dx=1.000 mm, dy=1.000 mm
Maximum value of SAR (interpolated) = 23.4 W/kg

CW5600/Zoom Scan (7x7x13)/Cube 0: Measurement grid: dx=4mm, dy=4mm, dz=2mm
Reference Value = 33.05 V/m; Power Drift = -0.05 dB
Peak SAR (extrapolated) = 44.8 W/kg
SAR(1 g) = 8.26 W/kg; SAR(10 g) = 2.28 W/kg
Maximum value of SAR (measured) = 23.1 W/kg



System Check_5750MHz_Head

Communication System: UID 0, CW (0); Frequency: 5750 MHz; Duty Cycle: 1:1
Medium: HSL_5750 Medium parameters used: $f = 5750$ MHz; $\sigma = 5.304$ S/m; $\epsilon_r = 35.214$; $\rho = 1000$ kg/m³
Ambient Temperature : 23.2 °C; Liquid Temperature : 22.5 °C

DASY5 Configuration:

- Probe: EX3DV4 - SN7608; ConvF(4.87, 4.87, 4.87) @ 5750 MHz; Calibrated: 2023.03.15
- Sensor-Surface: 2mm (Mechanical Surface Detection)
- Electronics: DAE4 Sn1643; Calibrated: 2023.02.22
- Phantom: ELI V8.0 (20deg probe tilt); Type: QD OVA 004 Ax; Serial: xxxx
- Measurement SW: DASY52, Version 52.10 (4); SEMCAD X Version 14.6.14 (7483)

CW5750/Area Scan (101x101x1): Interpolated grid: dx=1.000 mm, dy=1.000 mm
Maximum value of SAR (interpolated) = 10.8 W/kg

CW5750/Zoom Scan (7x7x13)/Cube 0: Measurement grid: dx=4mm, dy=4mm, dz=2mm
Reference Value = 22.95 V/m; Power Drift = 0.04 dB
Peak SAR (extrapolated) = 23.3 W/kg
SAR(1 g) = 7.75 W/kg; SAR(10 g) = 2.14 W/kg
Maximum value of SAR (measured) = 11.8 W/kg

