

深圳市麒鑫通达科技有限公司

天线测试数据报告

客户: 卓信特

项目: Z5536

GSM: B2/B3/B5/B8

WCDMA: B2/B4/B5

TDD: B41

FDD: B2/B4/B5/B12/B13/B25/B26/B66/B71

工程: 熊工 (187 1893 6792)

日期: 2024-04-28

1. Test Project

	Test Project	Equipment
1. S Parameter	1. Return Loss (RL) 2. VSWR	Network Analyzer: Agilent 5071B
2. RF Test (2/3/4/5G)	1. power 2. level 3. TRP/TIS	Comprehensive Test: SP9500/CMW500/8960 Test Environment: Anechoic Chamber

2. Test Equipment



Agilent 5071B (S Parameter (RL/VSWR) Test Equipment)



Agilent 8960 (2G/3G Test Equipment)

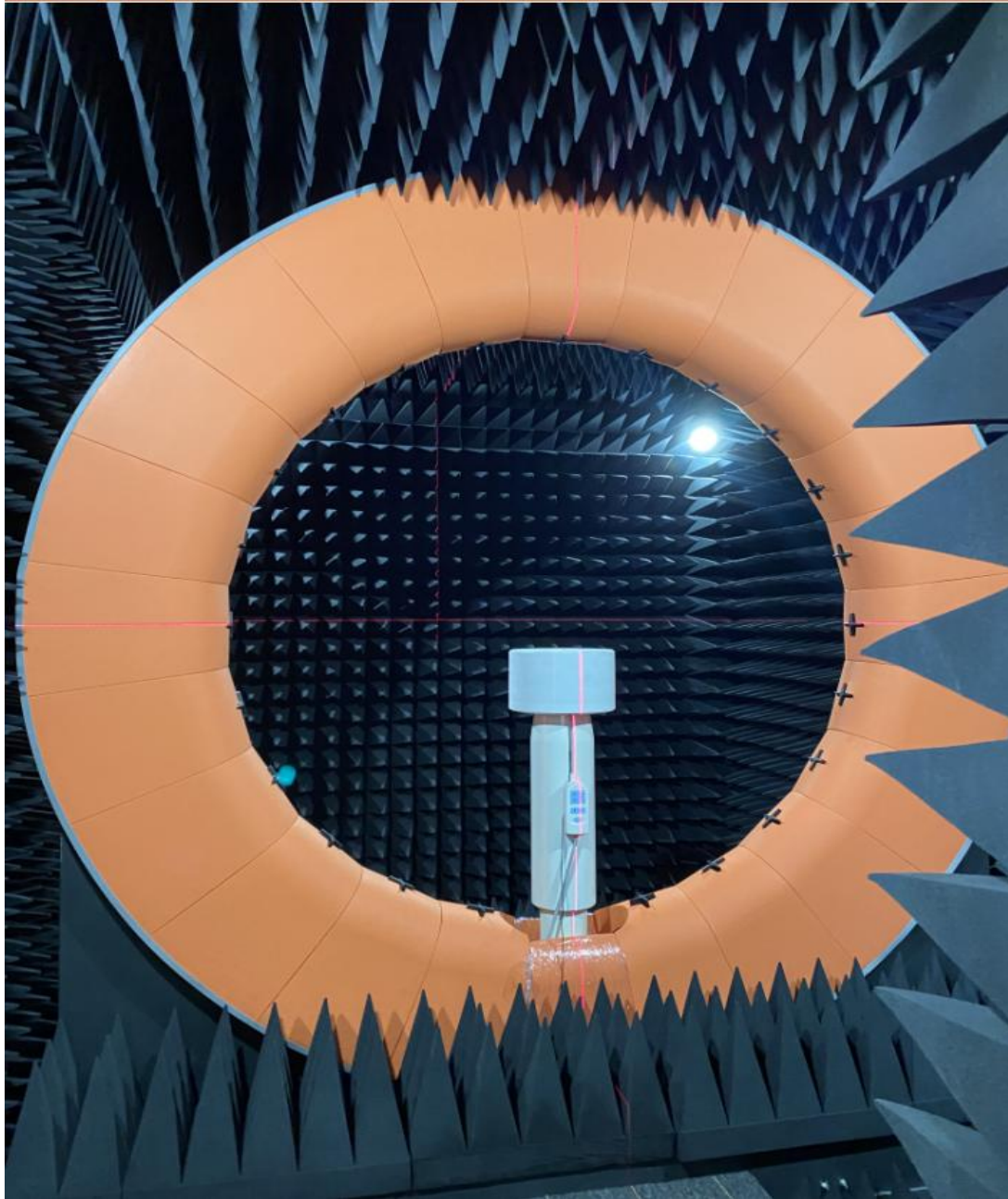


CMW 500 (2G/3G/4G Test Equipment)



SP9500 (5G Test Equipment)

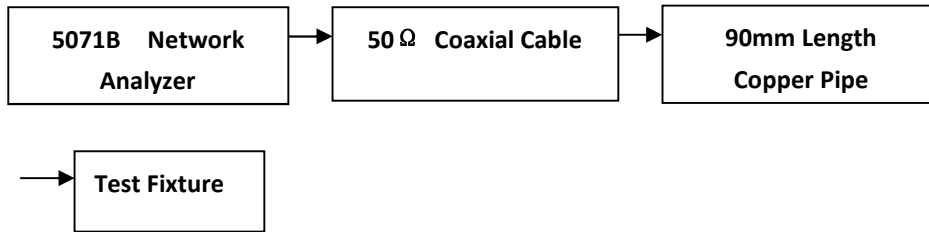
3. TestEnvironment



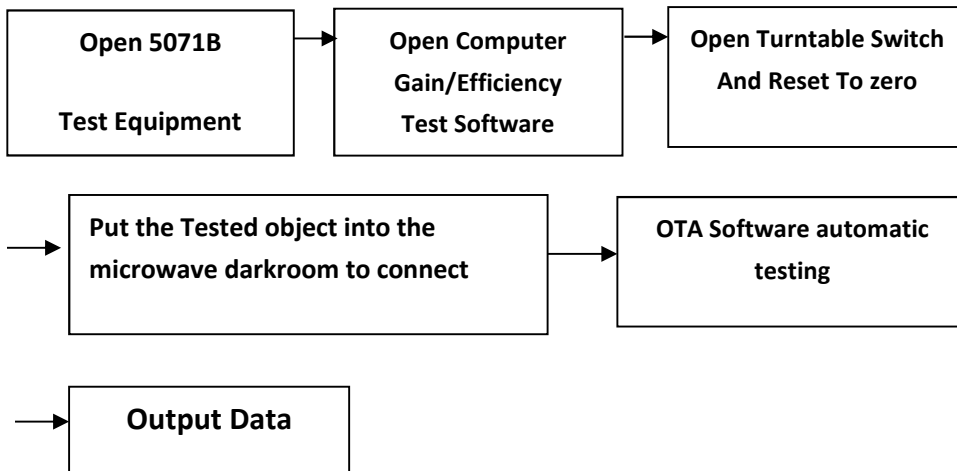
Microwave Anechoic Chamber

4. Test Steps

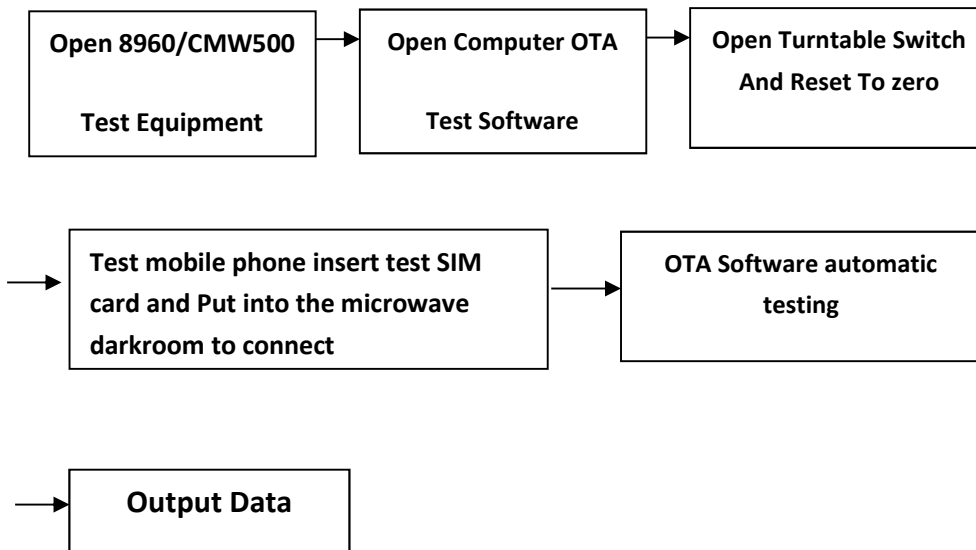
Passive VSWR/RL Test Steps:



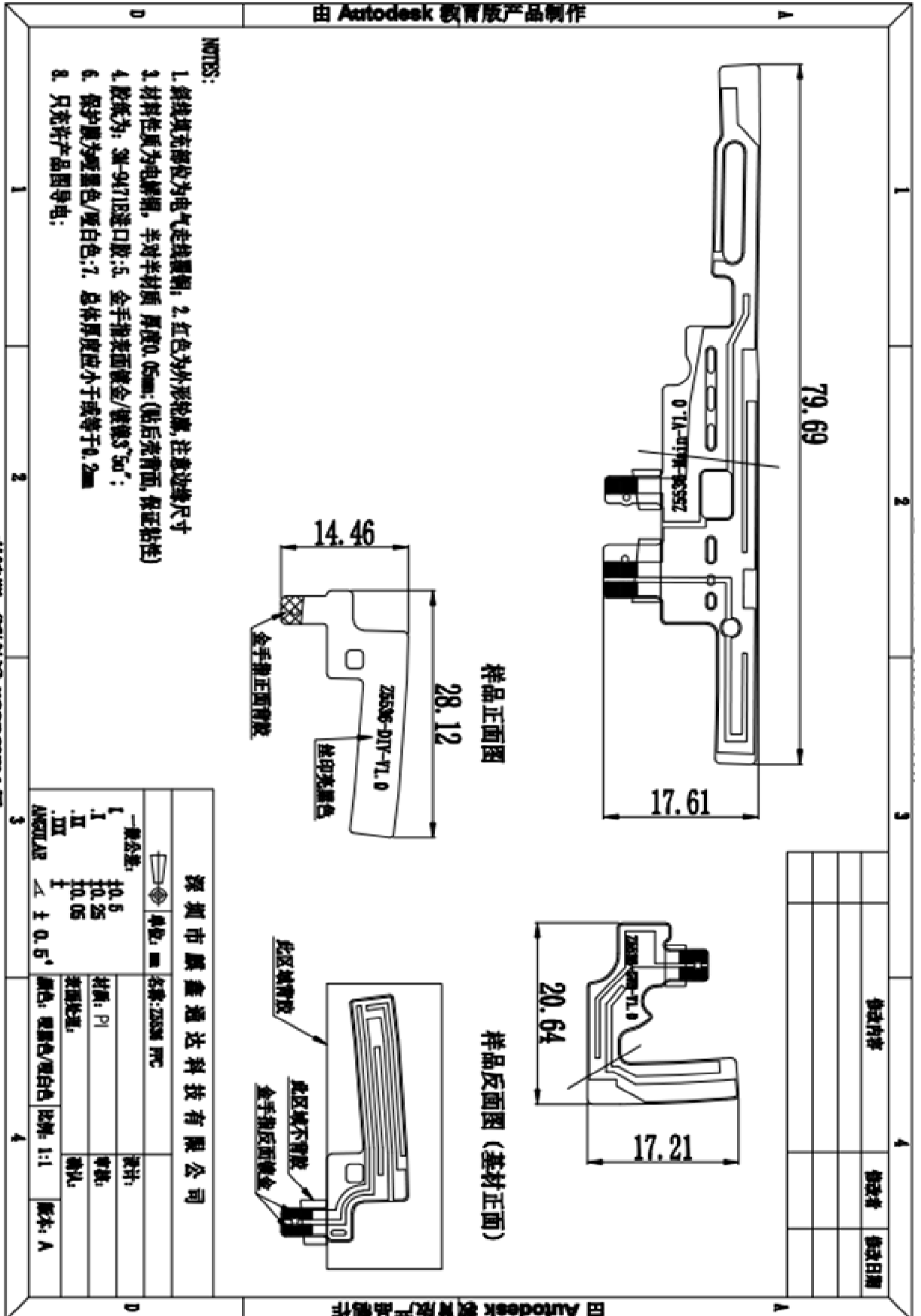
Gain/Efficiency Test Steps:



Active TRP/TIS Test Steps:



5. Antenna size diagram



6 .Antenna Gain

Band	Max Gain	Band	Max Gain
GSM850	-0.38	Bluetooth	-0.37
GSM900	-0.51	WIFI-2.4G	-0.37
DCS1800	-0.14	GPS	-0.23
PCS1900	-0.33		
WCDMA 2	-0.32		
WCDMA 4	-0.45		
WCDMA 5	-0.38		
LTE-B2	-0.32		
LTE-B4	-0.45		
LTE-B5	-0.38		
LTE-B12	-0.92		
LTE-B13	-0.87		
LTE-B25	-0.33		
LTE-B26	-0.38		
LTE-B66	-0.33		
LTE-B71	-1.37		
LTE-B41	0.17		

7.3D Lobe Diagram

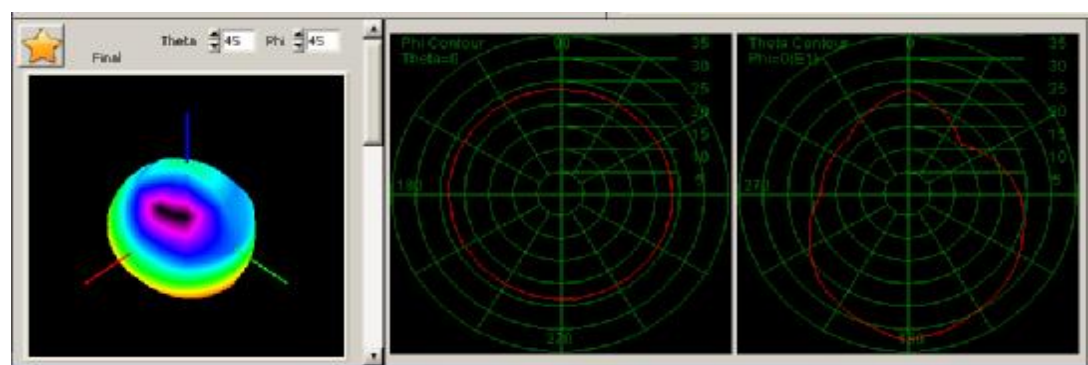
GSM850



GSM900



DSC1800



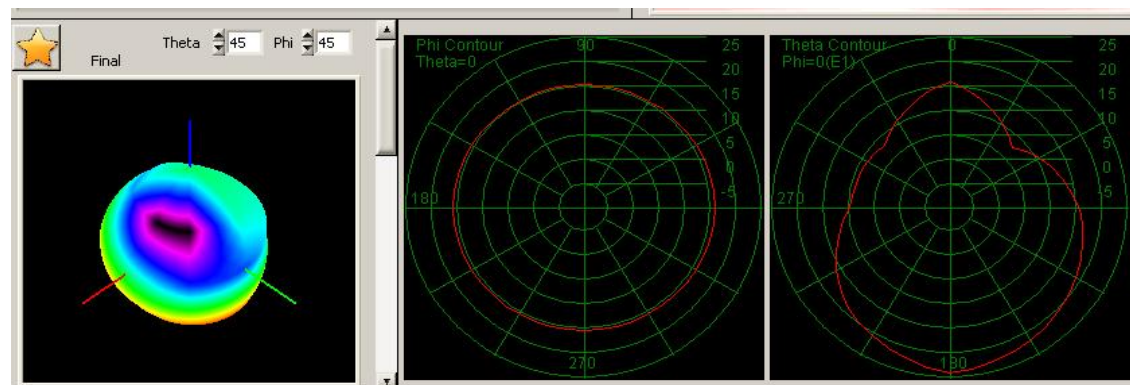
PCS1900



W2



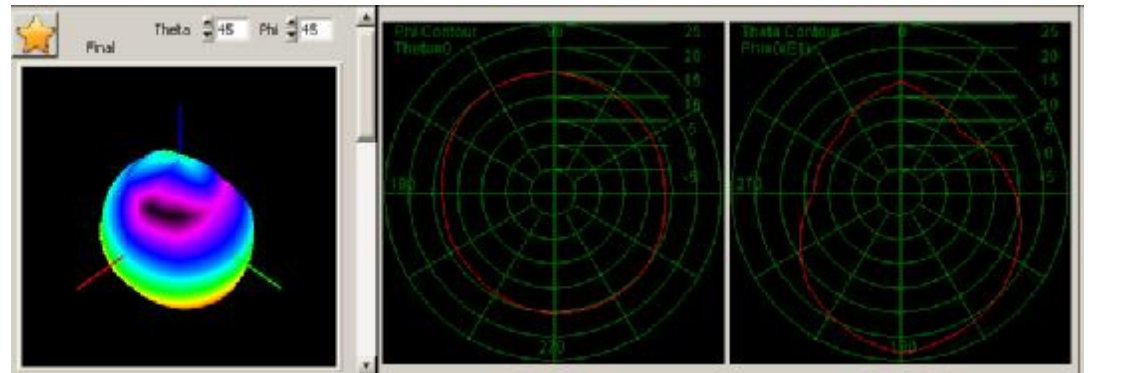
W4



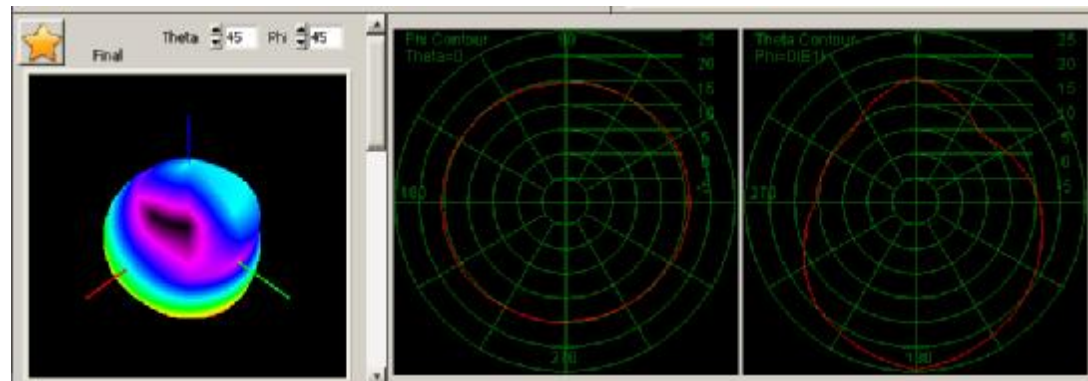
W5



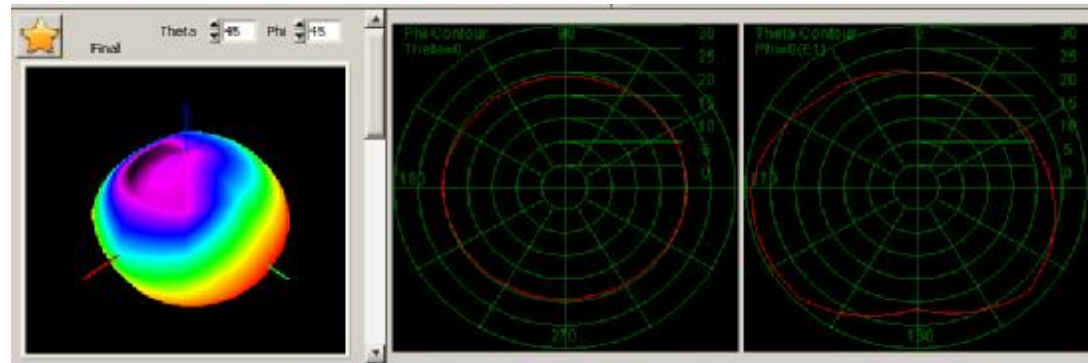
FDD-B2



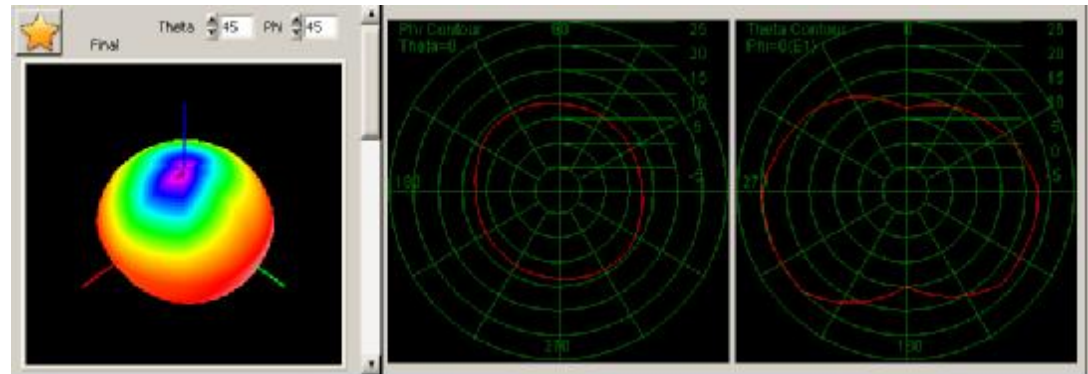
FDD-B4



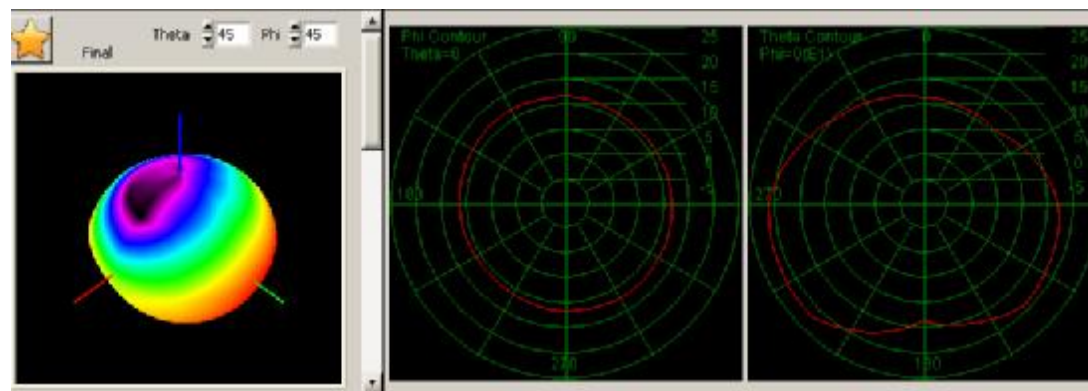
FDD-B5



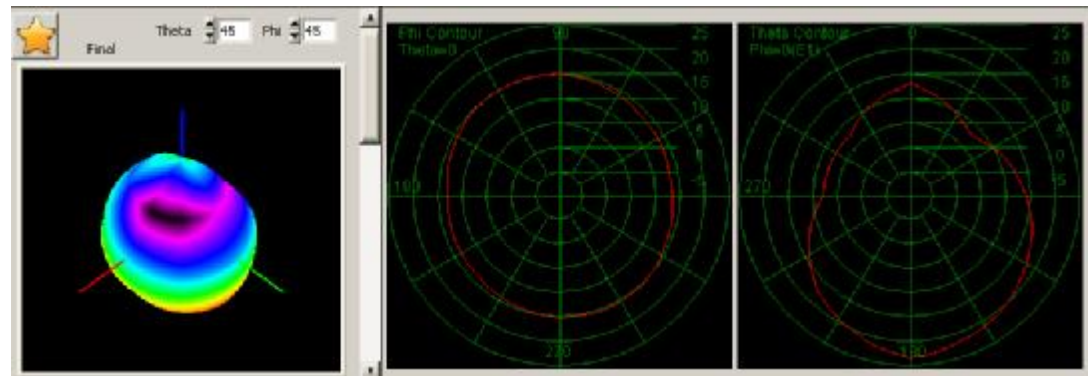
FDD-B12



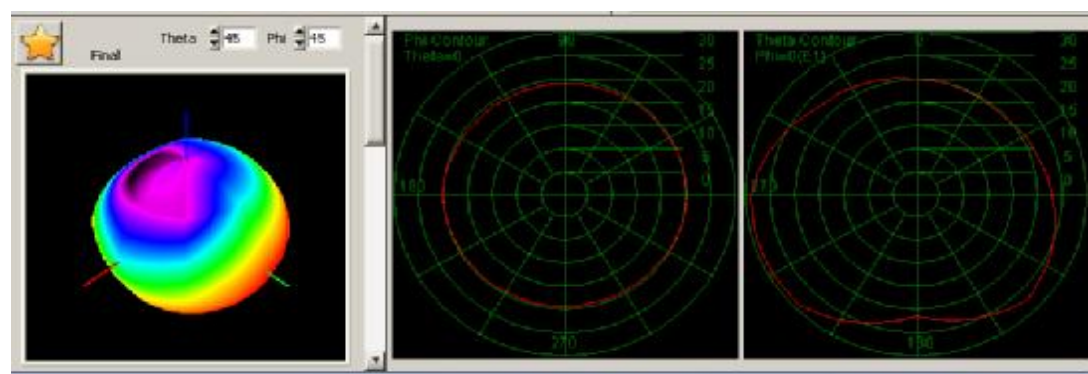
FDD-B13



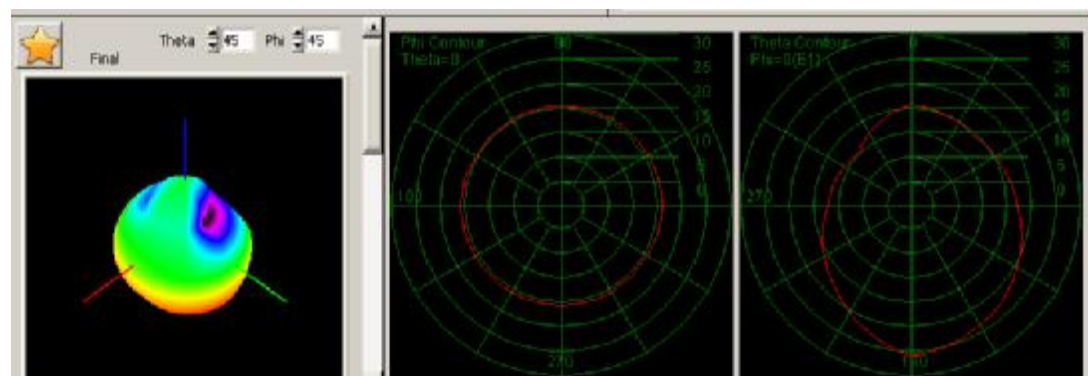
FDD-B25



FDD-B26



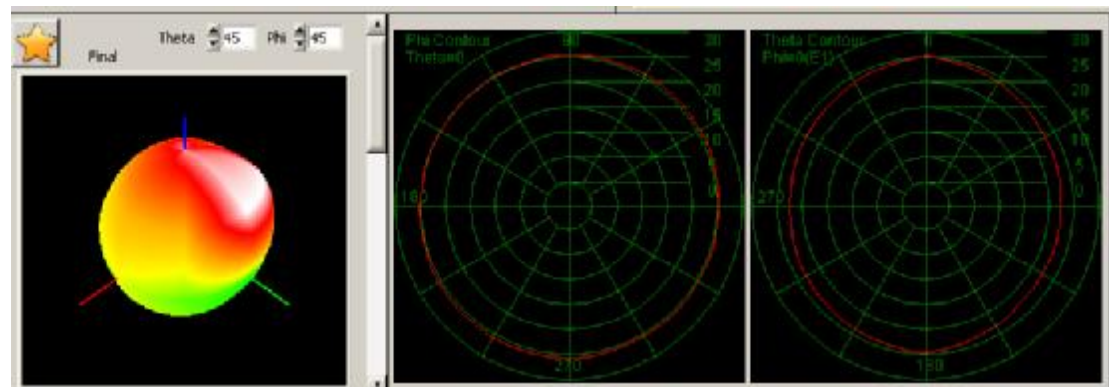
FDD-B66



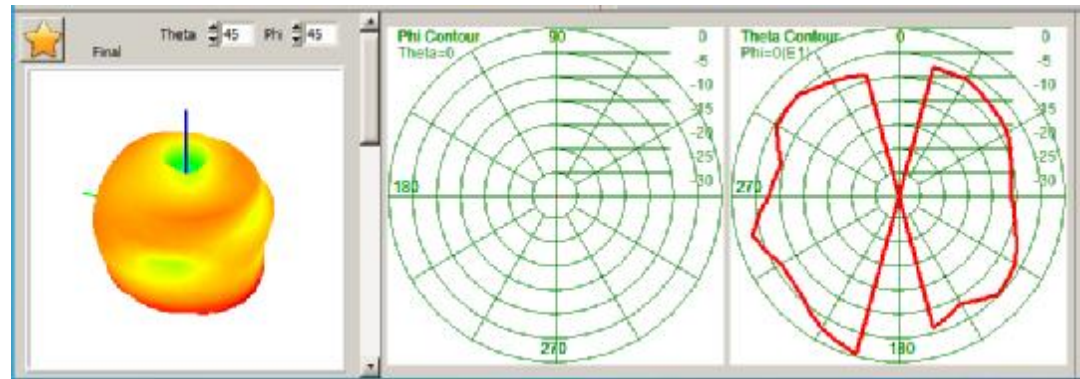
FDD-B71



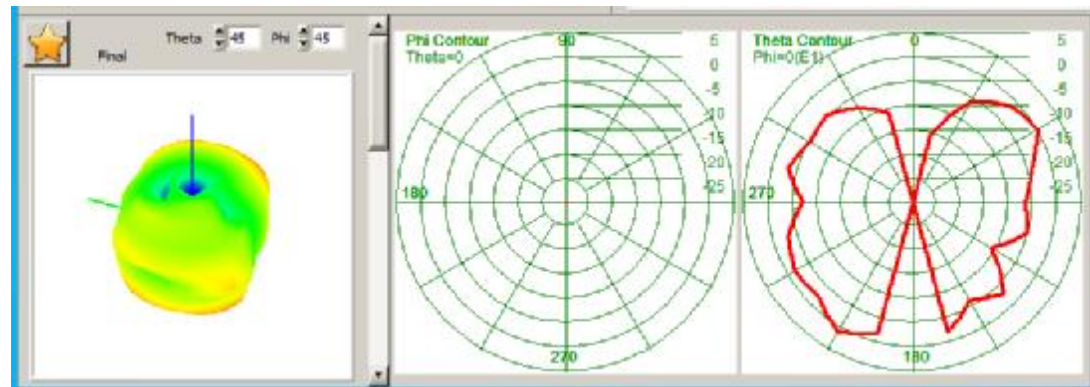
TDD-B41



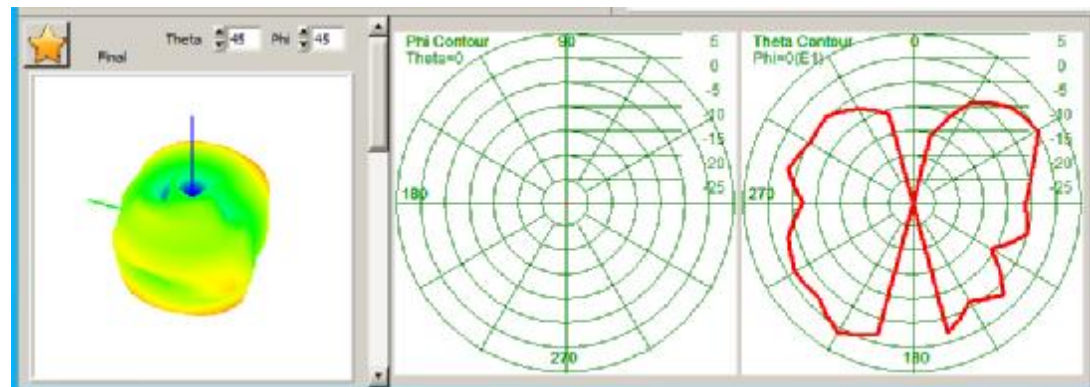
GPS



BT



2.4G-WIFI



8.Introduction to Antenna Information

M5536	
Antenna type and frequency band	MAIN ANTENNA(<u>PIFA</u>):2G/3G/4G DIV ANTENNA(<u>PIFA</u>):2G/3G/4G GPS/WIFI/BT ANTENNA(<u>PIFA</u>):L1/2.4GWIFI/BT
Antenna materia	FPC